

# NPD in Moldova: Content, Results and Lessons Learnt

Ilya Trombitsky  
Eco-TIRAS, Moldova



## **What are the comparative advantages of the NPD/IWRM as a process and a project to compare to other projects, assistance programs, policy processes?**

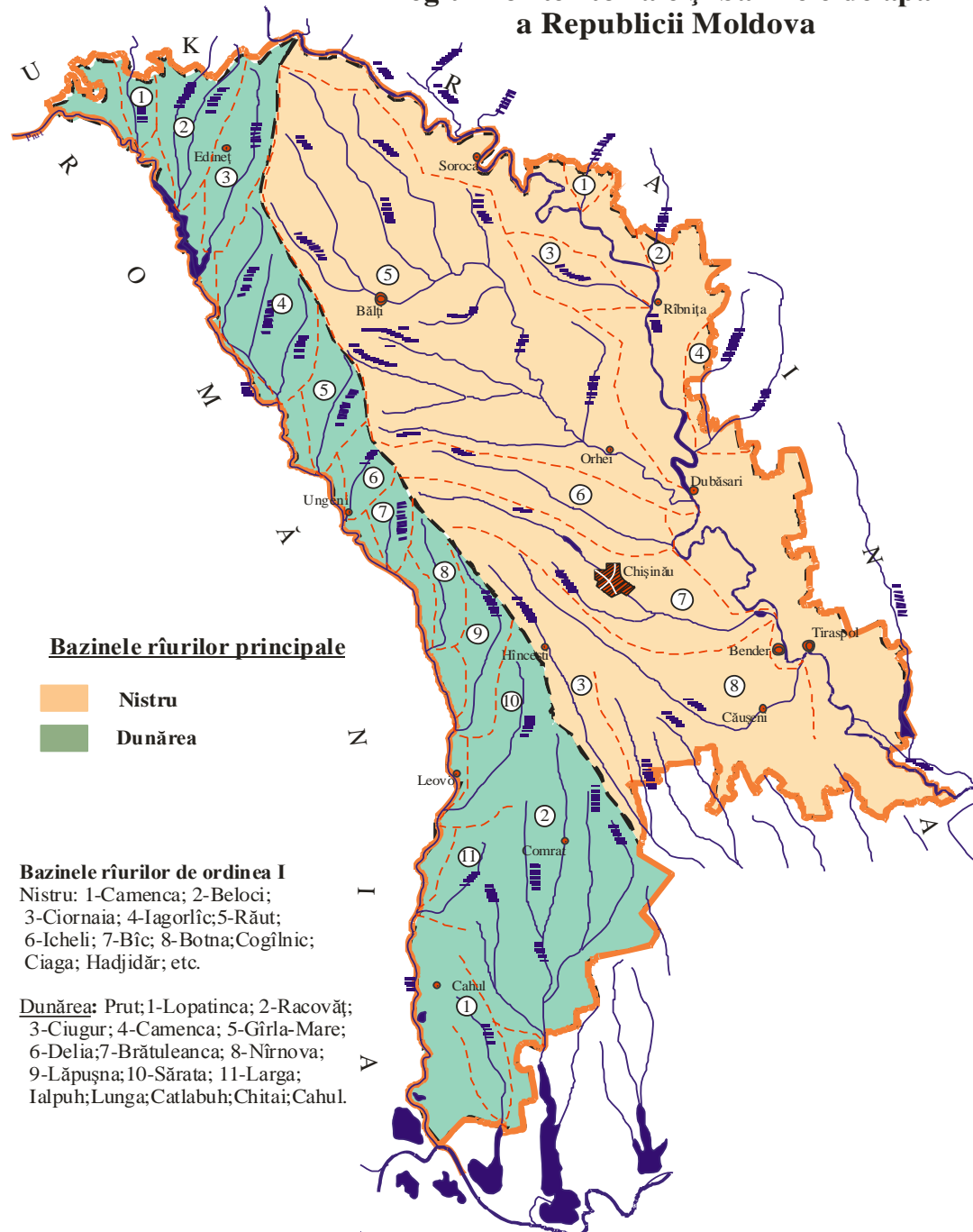
A Platform for drawing up and implementation of policy packages on:

- Urban wastewater treatment – new regulations drafting and adoption;
- River basin management management authorities and River basin councils

## **What are the contents of the policy packages (water laws, strategies, etc.) prepared within NPD?**

- Water law, corresponding the WFD (2000)
- Town wastewater discharges harmonized with EU Wastewater Directive (1991)
- Initiation of IWRM discussion, formation of river basin approach, establishing of basin agencies and basin council regulations
- Initiation of implementation of W&H Protocol (targeting process)

# Schema regiunilor teritoriale și bazinele de apă a Republicii Moldova



## How the NPD and its Steering Committee is useful in the preparation?

- NPD is a tribune and a round table, where stakeholders try to find a common views and approaches
- In this respect the Steering Committee helps to prepare the wider discussion and to ensure decisions support by ministers
- It is important to form the positive psychological atmosphere helpful in decision making

## **What technical expertise is required to support preparation of the policy packages?**

- It is important to select in a right way the local experts who will report their proposals and visions at the Steering Committee and at the NPD and formulate the policies' drafts
- It looks useful to establish cooperation with the leading think-tanks, NGOs, research institutions and parallel projects

## What are the lessons learned and good practices?

- NPD permits to establish sustainable linkages and cooperation between governmental agencies and institutions which never existed before
- It is helpful in development of the dialogues with Civil Society institutions and the academics and attract their experiences
- For countries of ENPI it permits also the sharing of the EU approaches and legislation

## What are the needed follow-up and assistance?

- Usually established NPDs partnerships are fragile and could die without institutional memory safety mechanisms
- It is useful to fix partnerships by memoranda etc.
- Assistance should include the follow-up in promotion of NPD-initiated progresses (in case of MD – W&H-P implementation; sustainability of river-basin institutions; implementation of WFD; IWRM capacity building
- The implementation process should not have breaks