



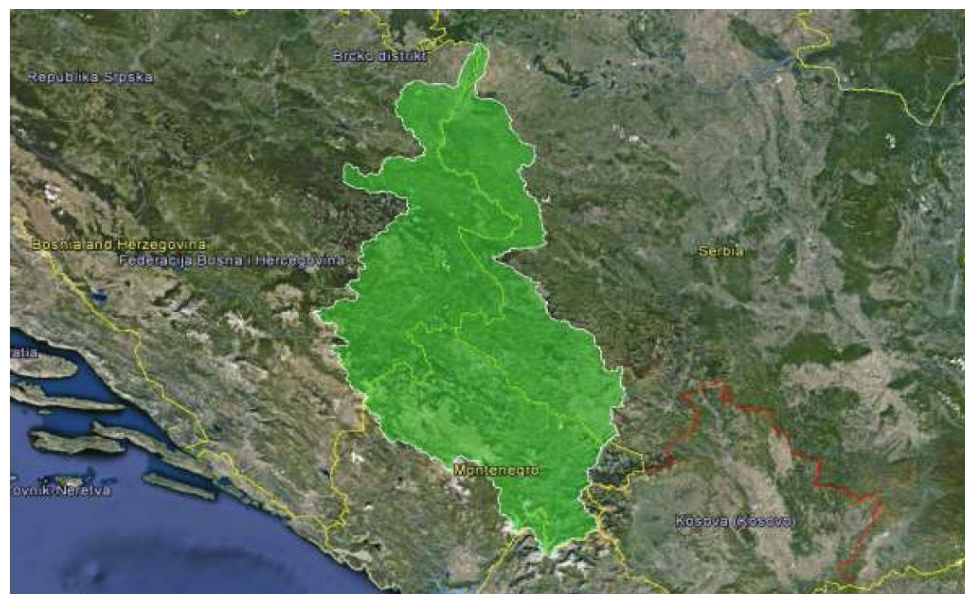
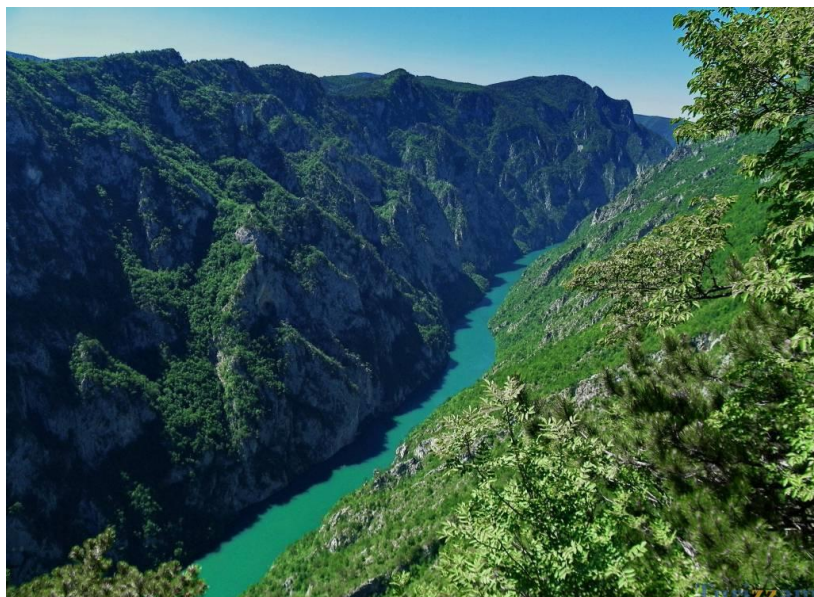
**Workshop on**  
**ASSESSING THE WATER-FOOD-ENERGY-ECOSYSTEMS NEXUS**  
**AND BENEFITS OF TRANSBOUNDARY COOPERATION**  
**IN THE DRINA RIVER BASIN**

**National development plans and sectoral goals in  
the Drina river basin – Environment**

**Podgorica, 2016**

# Background

- Total surface area of 19,680 km<sup>2</sup>
- Population of 750,000 citizens
- Flow volume 12 bill. m<sup>3</sup> annually
- Good water quality
- 80% of population using groundwater



Drina River Basin scores high on the list of areas with high endowments of natural resources and development opportunities in the region

- Hydropower
- Tourism

## DRB area crosses three national parks

- Durmitor National Park in Montenegro,
- Sutjeska National Park in Bosnia
- Tara National Park in Serbia

Name and type of Protected Area	Size	Date Formed
<b>Montenegro</b>		
Biogradska gora: NP	56.5	1952
<b>Durmitor</b> : NP, UNESCO world heritage site, IBA	390	1952
Prokletije: NP	166.3	2009
<b>Komovi</b> : RP, IUCN: VI	195.04	not yet protected
<b>Piva</b> : RP, IUCN: VI	200	2015
Ljubišnja		not yet protected
<b>Serbia</b>		
<b>Tara</b> : NP, Emerald site, IUCN: II	191.7	1981
Šargan – Mokra Gora: PP	108.14	2005
Part of the area of the village of Tršč and Tronoša Monastery:		1965
<b>Trešnjica River Gorge</b> : SNR Trešnjica River Gorge		1995
Mileševka: RNP	4.57	1976
<b>Uvac</b> : SNR Canyon of the Uvac River		
<b>Slapovi sopotnice</b> : MoN Waterfalls of Sopotnica River		2005
Many other MoN (small objects)		
<b>Zasavica</b> : SNR, IUCN: IV Sremska Mitrovica and Bogatić		
<b>BiH: Federation</b>		
Plans in progress (See below)		
<b>BiH: Republika Srpska</b>		
<b>Sutjeska</b> : NP, IUCN: II	160.52	1962 (2012) Planned
<b>Gromiželj</b> : SNR, IUCN: Ib Bijeljina municipality, Confluence of the Drina and Sava rivers		
<b>Perućica</b> (located within NP Sutjeska): SNR, IUCN: Ia	14.34	1954
Drina: NP		not yet protected
<b>Drina</b> : Biosphere reserves		not yet protected
around 25 other PAs (see map)		not yet protected

# Transboundary impacts

- Altered flow rates due to reservoir operation
- Intensive forestry (including wood and paper industry)
- Accidental pollution (petrochemical and metallurgy industry)
- Intensive agriculture in the lowest section



UNECE

INTERNATIONAL SAVA RIVER BASIN COMMISSION



Ministry of Agriculture  
and Rural Development of  
Montenegro



MINISTERO DELL'AMBIENTE  
E DELLA TUTELA DEL TERRITORIO E DEL MARE

# Transboundary risks

- Numerous abandoned or “temporarily abandoned” sites in the region that are gradually (or sometimes rapidly) deteriorating, accompanied with many unregulated dumps of untreated or inadequately treated waste, and wastewaters are discharged into the river and its tributaries
- Towns downstream do not have regulated dumping sites and approximately 30% of all floating waste ends up in the riverbed
- These sites pose risks to local communities, the environment and international relations

	Bosnia and Herzegovina	Montenegro	Serbia
Number of towns in basin	7	10	16
Inhabitants	310,000	146,000	210,000
Produced waste*	90,000	35,000	60,000
Treated waste*	0	0	0

# Policies

- Law on Environmental Protection
- The law contains basic principles of legal order that comprehensively and completely regulate protection of the environment.
- EIA/SEA
- All three countries are on a accession path toward EU, their policies are predominately shaped by the EU *acquis* in the harmonization process, and among other topics on water management, climate change and energy



# Thank you on your attention

