



The Second Assessment of Transboundary Rivers, Lakes and Groundwaters – Western and Central Europe Sub-Region

Annukka Lipponen

Environmental Affairs Officer, UNECE
Coordinator of the Second Assessment



- Convention on the Protection and Use of Transboundary Watercourses and International Lakes

Objectives of the assessment

- Serve as point of reference for Governments, IGOs, NGOs to improve management and status of waters
- Highlight achievements in IWRM at transboundary level & strengthen the integrated river basin approach
- Provide an up-to-date overview of pressures, status & trends in managing transboundary waters of the region, highlighting joint priorities → strengthened knowledge base for further action
- Identify situations of water crisis
- Process itself allows exchange of experience and increasing understanding of the problems and solutions in the whole ECE region



- Convention on the Protection and Use of Transboundary Watercourses and International Lakes

Second Assessment: mandate

Ministers in Belgrade requested second edition for next Ministerial Conference Environment for Europe (Astana, Kazakhstan, September 2011)

- Water and ecosystems one of the two themes
- The Second Assessment is one of the key inputs to the Ministerial Conference

The 5th Meeting of the Parties of the Water Convention endorsed the first sub-regional assessment (SEE) which serves as a model



- Convention on the Protection and Use of Transboundary Watercourses and International Lakes



OUR WATERS: JOINING HANDS ACROSS BORDERS

First Assessment of Transboundary Rivers, Lakes and Groundwaters



Scope

- Asian and European part of UNECE region
- Groundwater in the whole region
- Non-ECE countries sharing waters with ECE
- More sub-regional focus
- Emphasis on EECCA/Central Asia

140 rivers
30 lakes
200 aquifers

Second assessment: thematics

- Address gaps of 1st assessment, thus more focus on:
 - Water quality issues in Central Asia, water quantity issues in the rest of the region
 - Groundwaters (not integrated in the 1st assessment)
- Transboundary cooperation (agreements, joint bodies, M&A...)
- Impacts of climate change
- Economic and social aspects, health issues, security aspects
- Ecological aspects, biodiversity, Ramsar sites



Approach to preparing the second assessment

- National experts play a crucial role for provision of information and for coordination of joint assessment
- Data collection based on datasheets prefilled by the secretariat, using the first assessment, EPRs, documents made available by the countries; sheets sent to countries for complementing and updates
- Regional workshops are an important part of the preparatory process
- River and lake commissions involved in the preparation of assessments by basin
- Assessment structured based on DPSIR approach (Driving Force-Pressure-State-Impact-Response)



Outline

- Maps (also thematic maps)
- Overview-summary
- Objectives and scope
- Major findings
 - Legal and institutional framework
 - Monitoring
 - Pressures
 - Status and transboundary impact
 - Responses
 - Future trends/The way forward
- Facts and figures on rivers, lakes and groundwaters
- Annexes (national water management organization, transboundary water agreements)



- [Convention on the Protection and Use of Transboundary Watercourses and International Lakes](#)

Prototype basin map: featuring the Sava as example



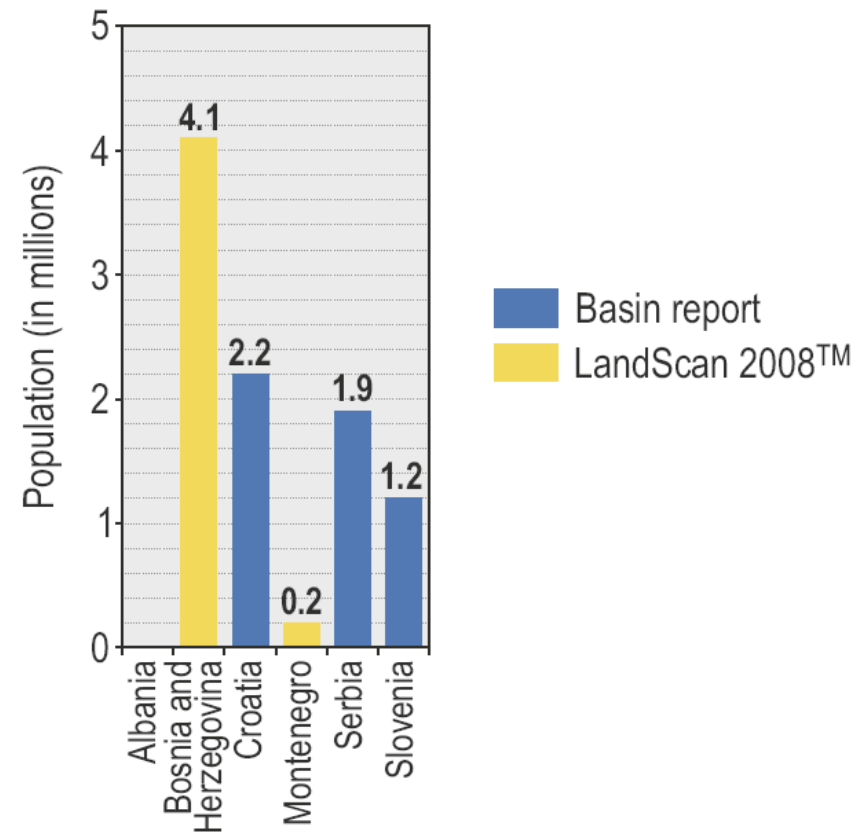
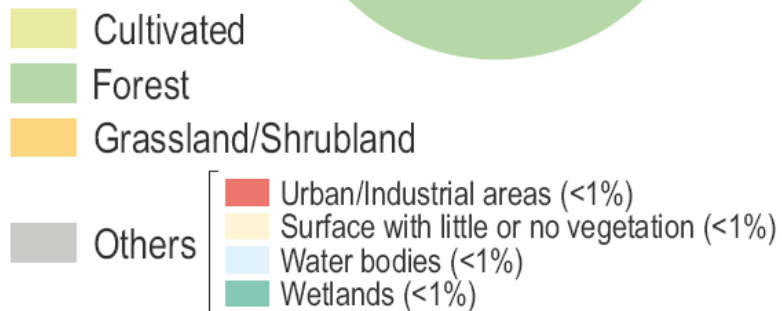
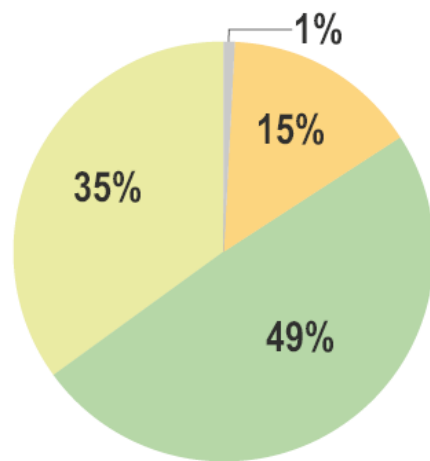
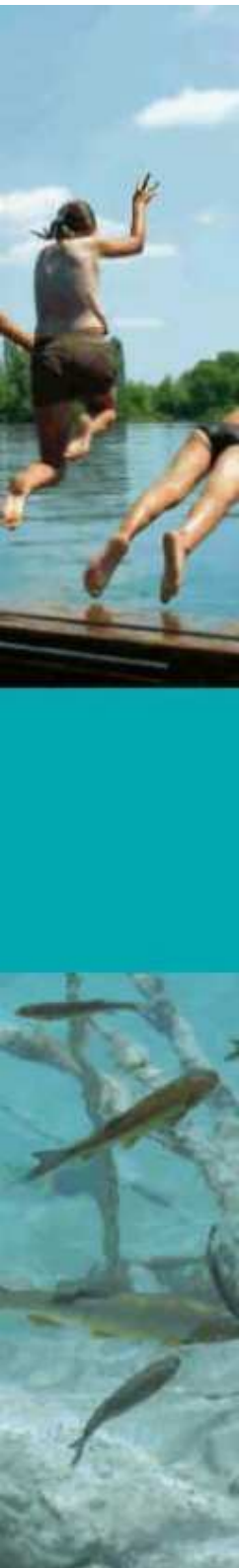
Gauging stations to link to discharges

Background map as in the 1st Assessment



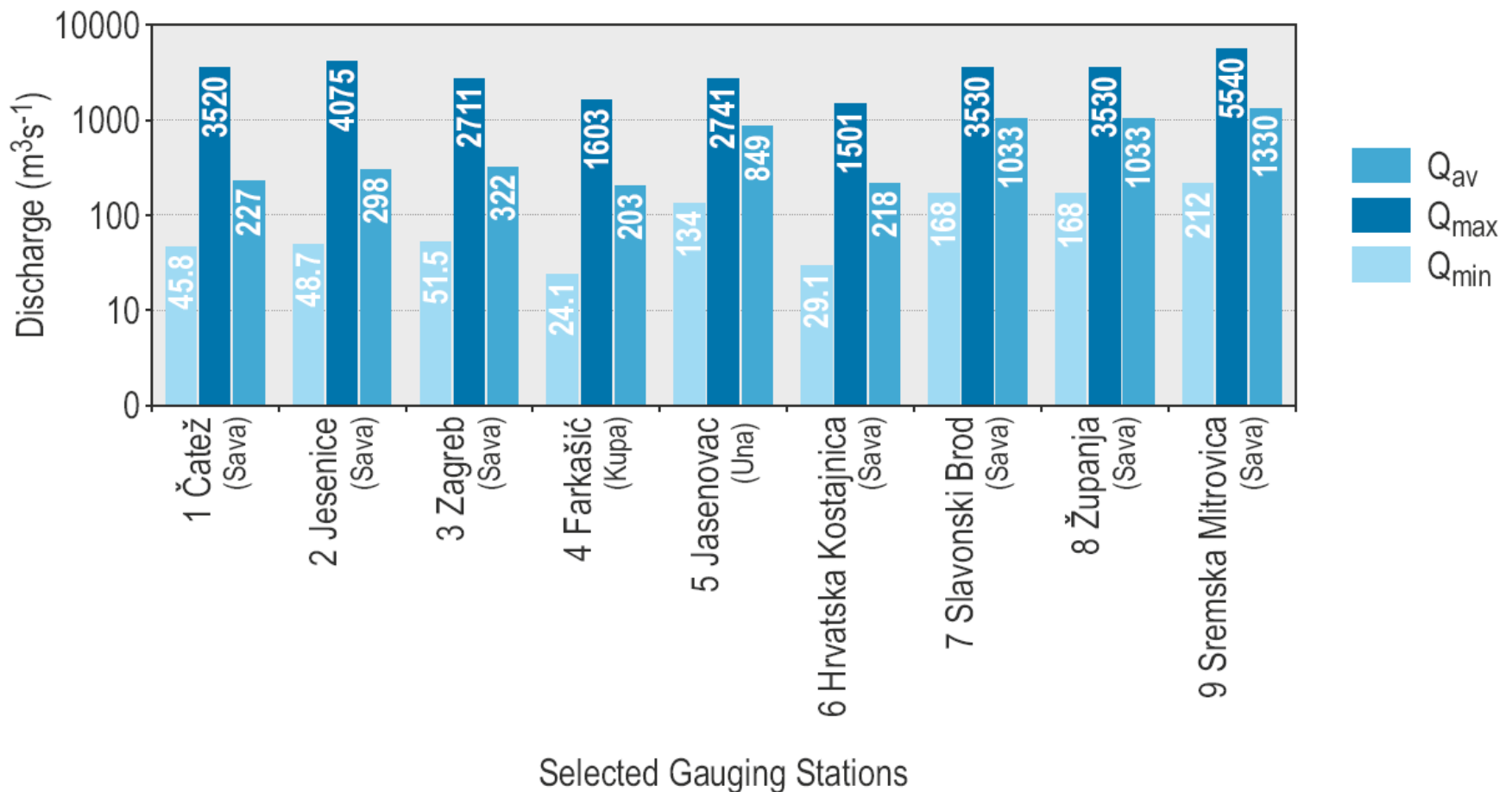
Graphs accompanying the basin maps

Landuse/land cover and population



Graphs accompanying the basin maps (2)

Discharges: average, minimum and maximum





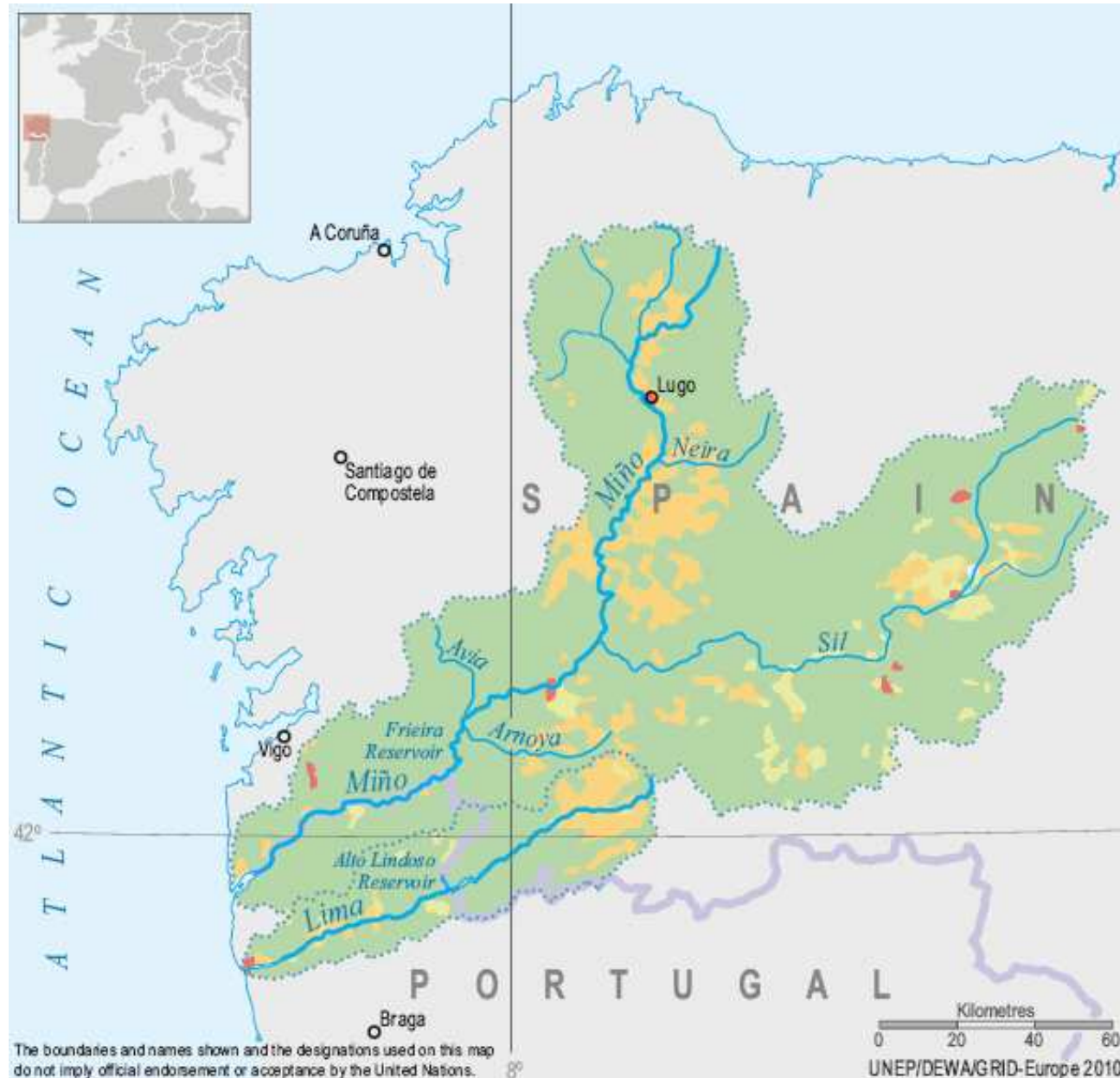
Oder



The boundaries and names shown and the designations used on this map do not imply official endorsement or acceptance by the United Nations.

UNECE/DEWA/GRID-Europe 2010

Mino



The boundaries and names shown and the designations used on this map do not imply official endorsement or acceptance by the United Nations.

Kilometres
0 20 40 60
UNEP/DEWA/GRID-Europe 2010

Information collected

- Description of the basin/aquifer (hydrology & hydrogeology, map)
- Surface and groundwater resources: distribution among the riparian countries within a basin/aquifer
- Pressures and their importance (water uses, polluting activities, diversion etc)
- Quality and quantity status of transboundary watercourses
- Transboundary impacts
- Response measures taken
- Cooperation: joint bodies, agreements, joint monitoring etc
- Trends

Organization of the work

- Presentations by river commissions' or riparian countries' representatives, following given outline, on selected sub-basins and major river basins; other riparian countries add information and discuss the main message of each basin
- Some copies of datasheets of the basins to be discussed are available for consultation
- Presentations on selected transboundary Ramsar sites or other wetlands of transboundary importance to be included in the 2nd Assessment
- Groundwaters: national presentations
- At the end of the day, time given for discussion in groups on some issues identified
- Last day (plenary) discuss and agree about main messages of the sub-region



UNEP

Convention on the Protection and Use of Transboundary Watercourses and International Lakes

Schedule for finalizing the assessment

- By **25 February**, the countries that have not yet completed the datasheets send filled-in datasheets/draft assessments to the UNECE secretariat and well as a description of how water management is organized in the country (one page; for FI, HU, NO, PL, SK received already) & relevant graphs & photos
- By the **end of March 2011**, the secretariat sends the draft assessments to the countries for comments
- By **14 April** the countries send their final comments
- **2-4 May 2011** final discussion and endorsement of the second Assessment by the Working Group (WG) on Monitoring and Assessment (WGMA) & WG IWRM
- Following basins' draft assessments are prepared by river/lake commissions based on official information (notably RBMPs) & will be included in the WGMA documents for review: Lake Constance, Meuse, Moselle & Saar, Oder, Rhine, Scheldt