

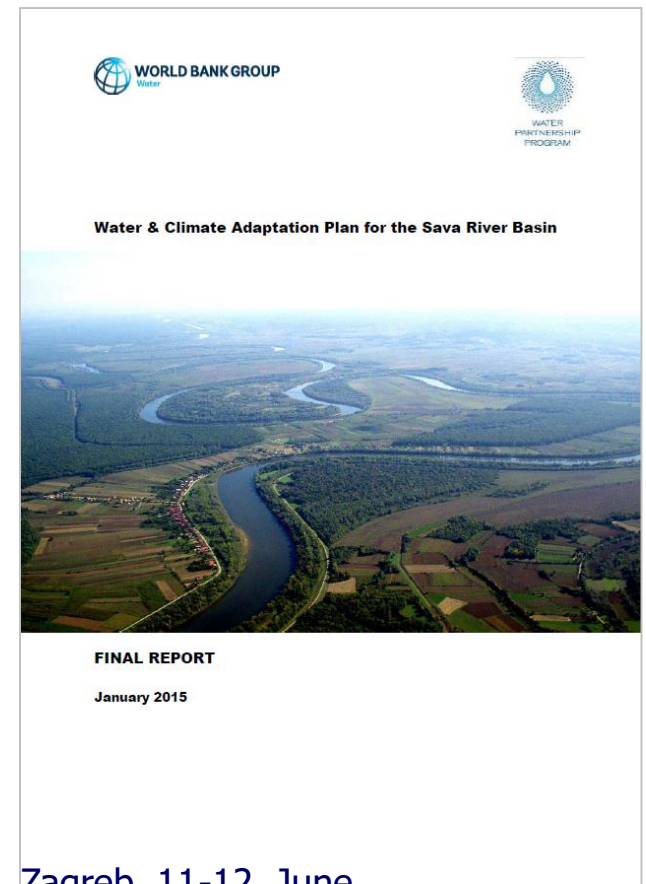
Approaches to climate change in the Sava River Basin

Expert Group on Flow Regulation and Environmental Flows
Zagreb, 11-12 June, 2019

Climate Change Adaptation

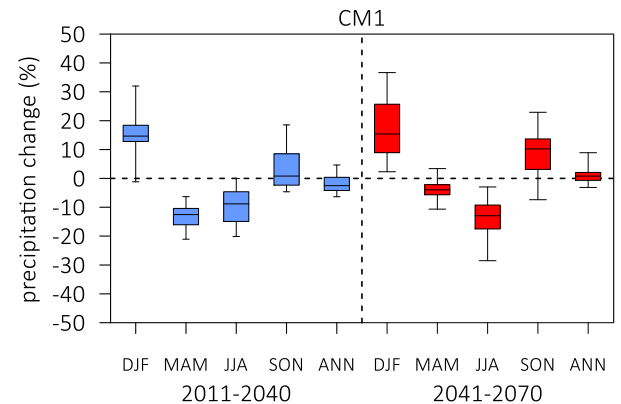
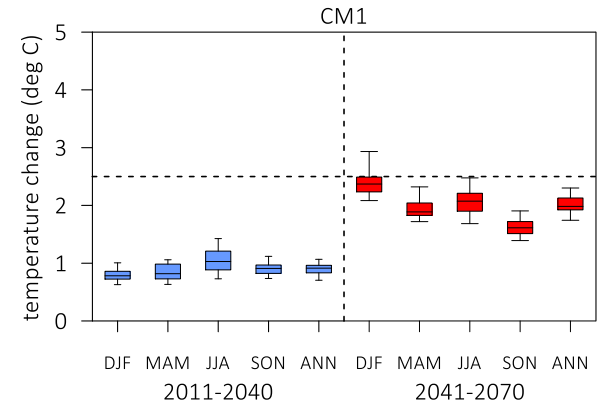
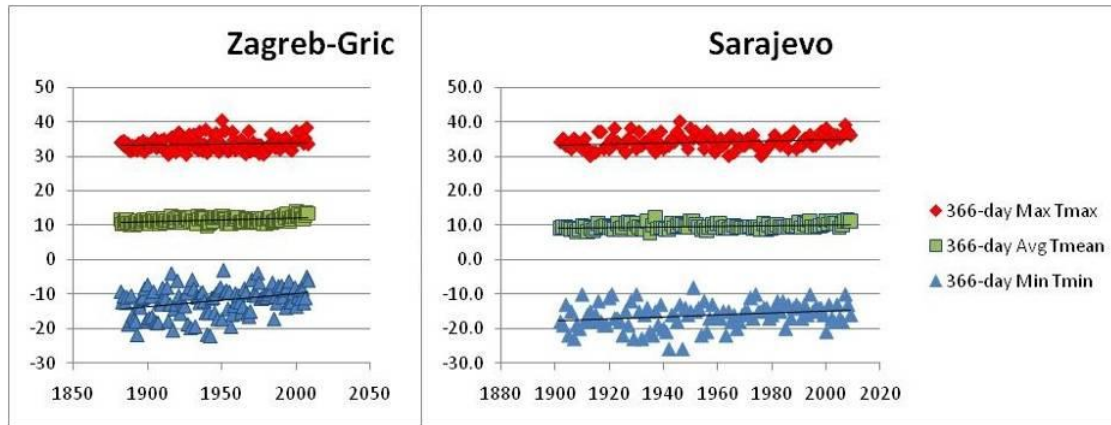
- **Water & Climate Change Adaptation Plan**

- Implemented by the WB (2015)
- Analysis of historic climate trends
- Climate and hydrological modelling
- Main report + Guidance notes
 - Navigation
 - Hydropower
 - Agriculture
 - Flood protection
 - Economic evaluation of CC impacts



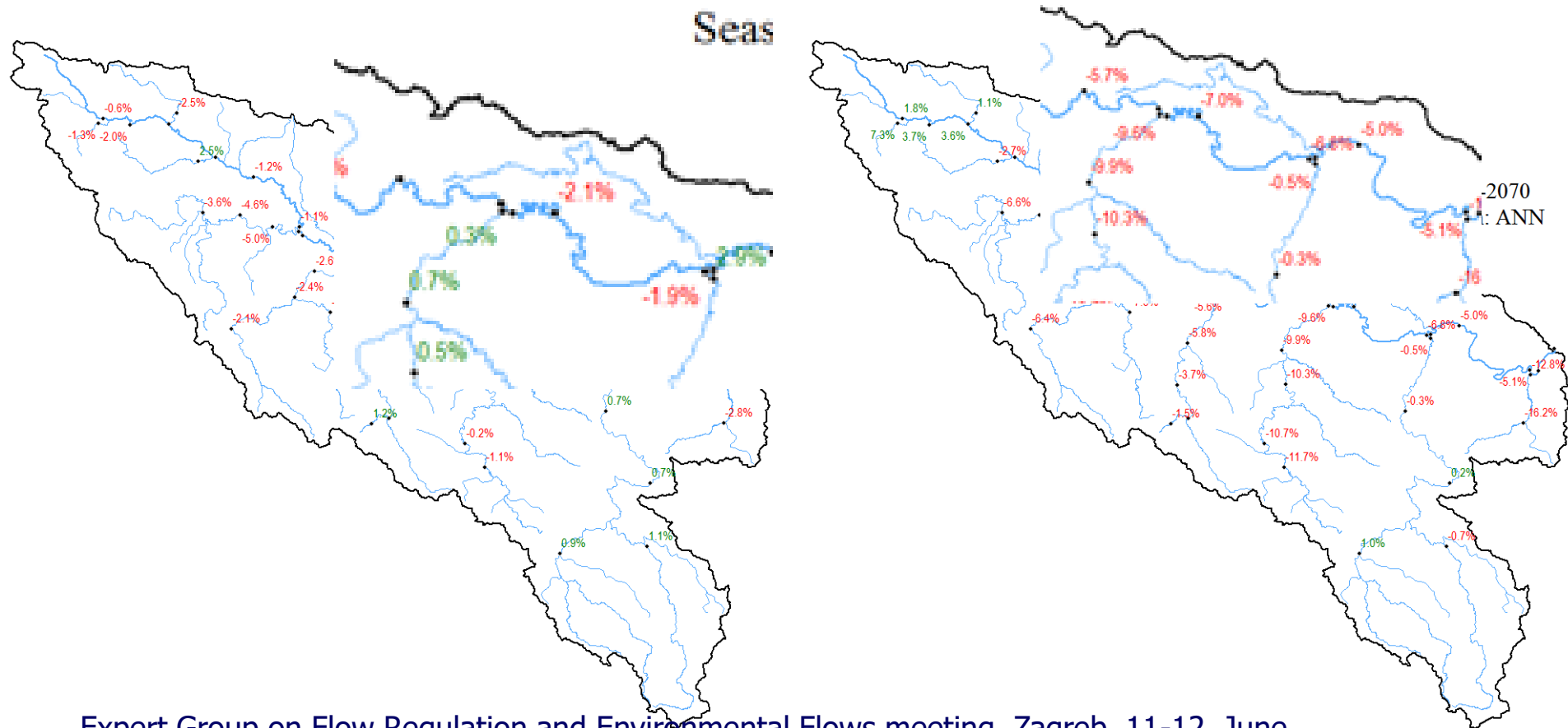
Climate Adaptation Plan

- Analysis of climate and hydrologic trends
- Temperature scenarios
- Precipitation scenarios



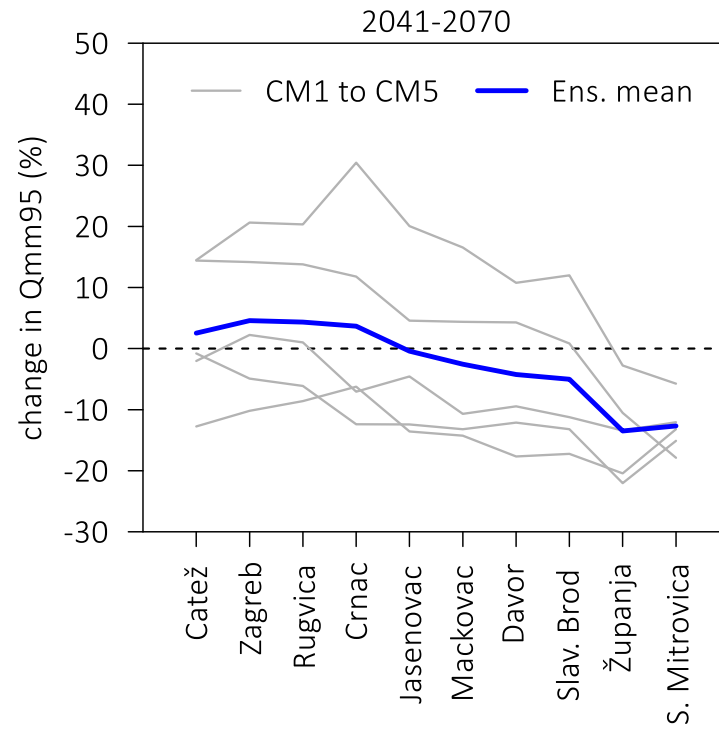
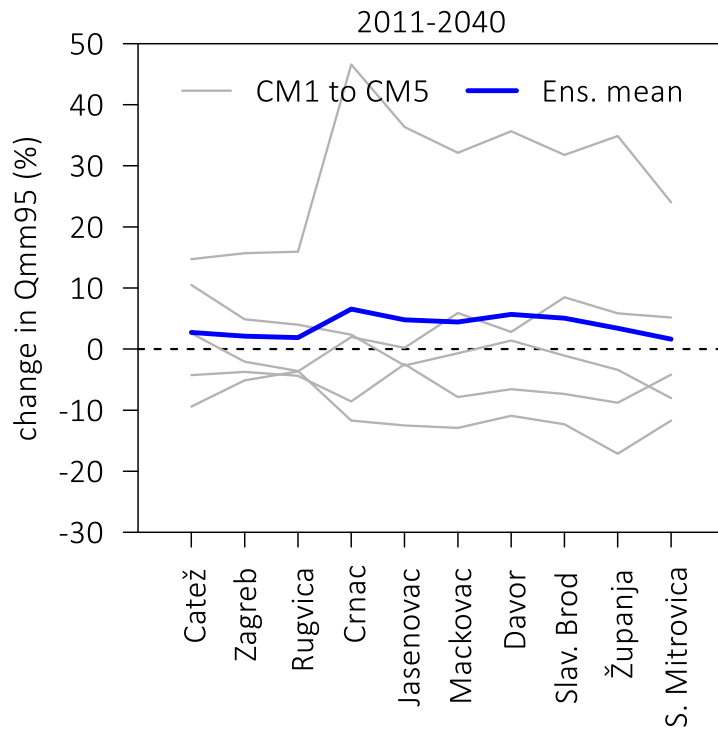
Climate Adaptation Plan

- **Change in mean annual runoff**
20
Seas



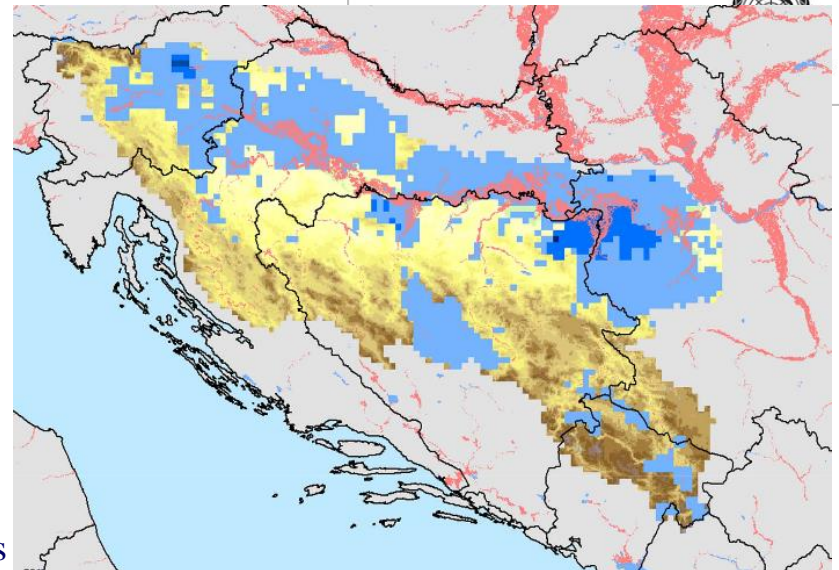
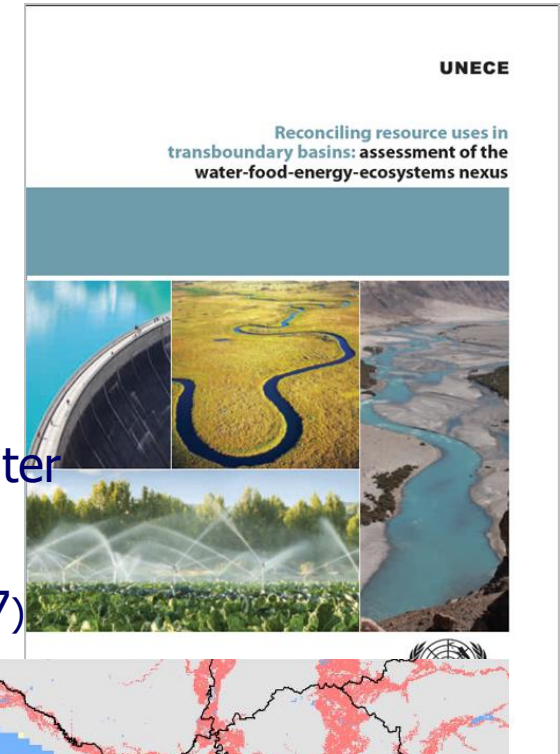
Climate Adaptation Plan

- **Change in ensemble median values of low flows (95% mean monthly Q)**



Other projects/activities

- **Consideration of intersectoral linkages** (water, food, energy, navigation, tourism, environment)
 - **Sava Nexus** – finished in 2015,
 - **Danube Water Nexus Project – Sava Case Study**, implemented by the EC Joint Research Center (finalized in 2016)
 - **Drina Nexus Assessment** – finished, June 2017)



Climate Change Adaptation

- **Outline of the Climate Adaptation Strategy and priority measures basin-wide for the SRB**
 - to develop the **Outline** in consistence with ICPDR's regional adaptation strategy;
 - to identify some **priority basin-wide measures** building on documents and studies available at national and regional levels;
 - to suggest **modalities and cost estimates** for the full development of the strategy and of its action plan.
 - Timeframe (June- October 2017)



The project was supported by: **French Ministry of Ecological and Inclusive Transition, International Office for Water and UNECE.**

Expert Group on Flow Regulation and Environmental Flows meeting, Zagreb, 11-12 June, 2019



Outline of CCA Strategy

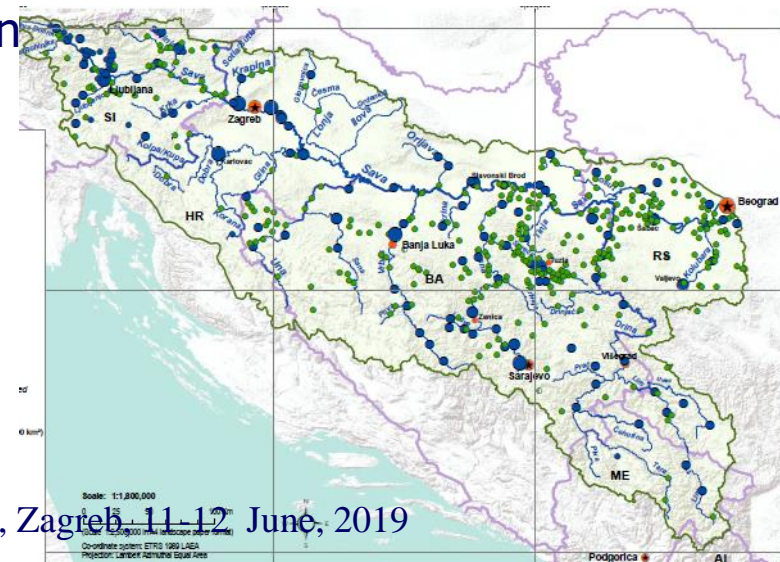
- **CC Adaptation measures**

- National

- Improve **risk forecasting** and analysis;
 - Increase **research**
 - Risk **prevention** and **reduction**;
 - Better **cooperation** and **coordination** among institutions;
 - **Capacity building**.

- Transboundary

- **Preparation** measures for adaptation
 - **Ecosystem - based** measures
 - **Behavioral changes** measure
 - **Policy** measures
 - **Technological** measures
 - **Disaster risk reduction** measures



Climate change adaptation

- **Future steps**
 - Develop of **Climate Adaptation Strategy** for the SRB
 - Ensure consistency between work being done at basin and national levels
 - Implementation of CC **adaptation measures**
 - Identify priority CC adaptation measures for the SRB
 - Integrate actions into planning activities at national level
 - Ensure integration of CC measures into RBM Plan

