

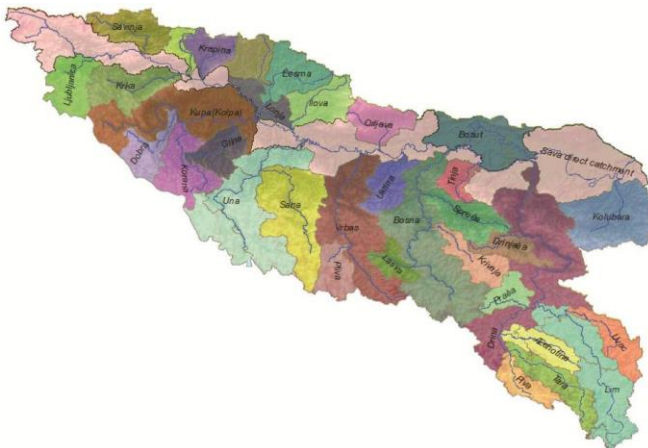
# **River Basin Management in the Sava River Basin**

**Expert Group on Flow Regulation and Environmental Flows**  
Zagreb, 11-12 June 2019

# Sava RBM Plan

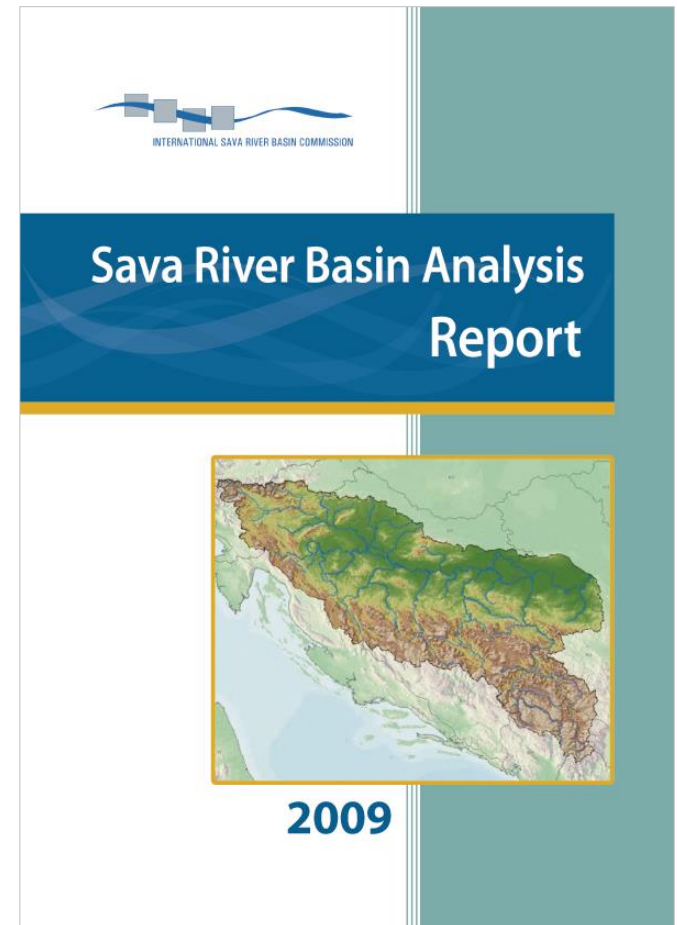
## Criteria applied:

- The **Sava River and its tributaries** with a catchments size of **>1,000 km<sup>2</sup>** and rivers of a **basin-wide importance** (Sotla/Sutla, Lašva and Tinja; area <1,000 km<sup>2</sup>)
- **Trans-boundary and national GWBs** which are important due to the size of the GWB (**area >1,000 km<sup>2</sup>**), or for those < 1,000 km<sup>2</sup> trans-boundary GWBs which are **important** due to various other criteria, e.g. socio-economic importance; uses, impacts, pressures, interaction with aquatic eco-system



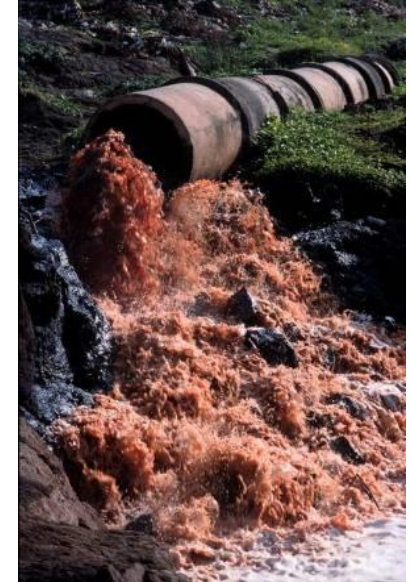
# Sava RBM Plan

- **Sava River Basin Analysis**
  - Requirements of **Art. 5 and Art. 6 of EU WFD** addressed
  - **Comprehensive nature**
    - Water **quality** and **quantity**
    - **Hydrology** and **hydromorphology** reports
    - **Integration** with other issues (flood management, navigation development)
  - **First (ever) GIS-based maps** of the basin



# Sava RBM Plan

- **Significant Water Management Issues**
  - **Pollution**  
(organic, nutrients, hazardous substances)
  - **Hydromorphological alterations**  
(hydropower use, water supply and flood protection facilities)
  - **Groundwater quality and quantity**



# Sava RBM Plan

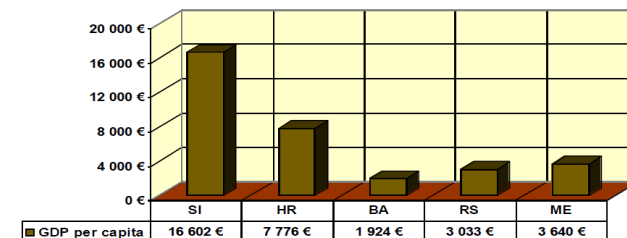
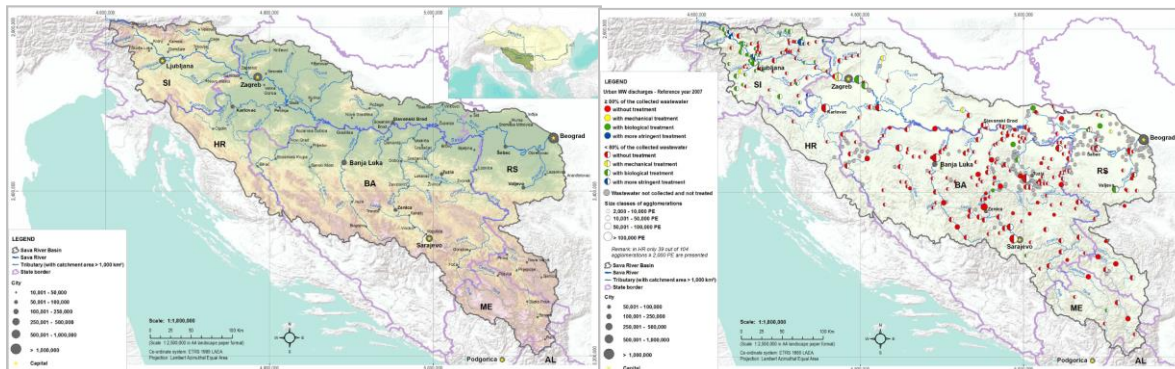
- **Other issues addressed**
  - **Sediment** quant. & qual.
  - **Invasive alien species**
  - **Protected areas**
  - **Integration** with other policies
    - Flood management
    - Navigation
    - Hydropower
    - Agriculture
    - Climate change





# Sava RBM Plan

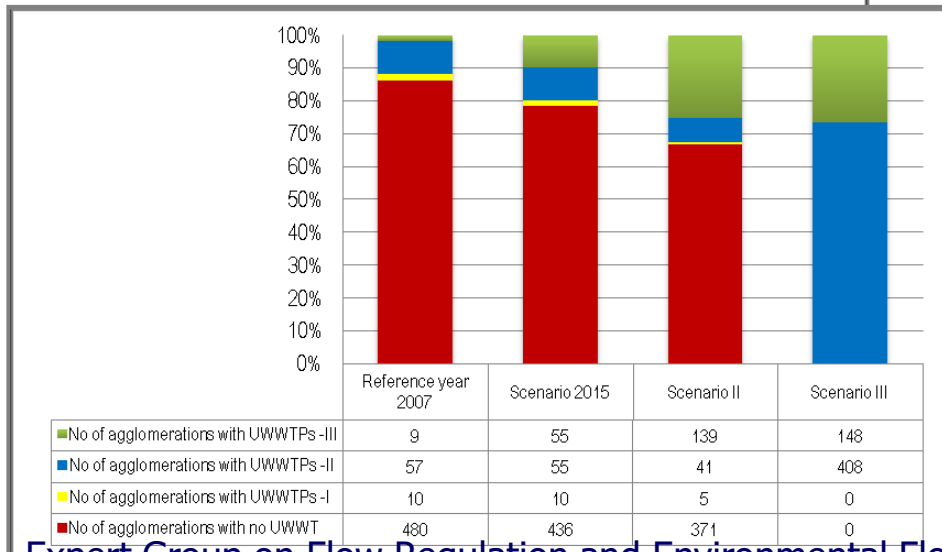
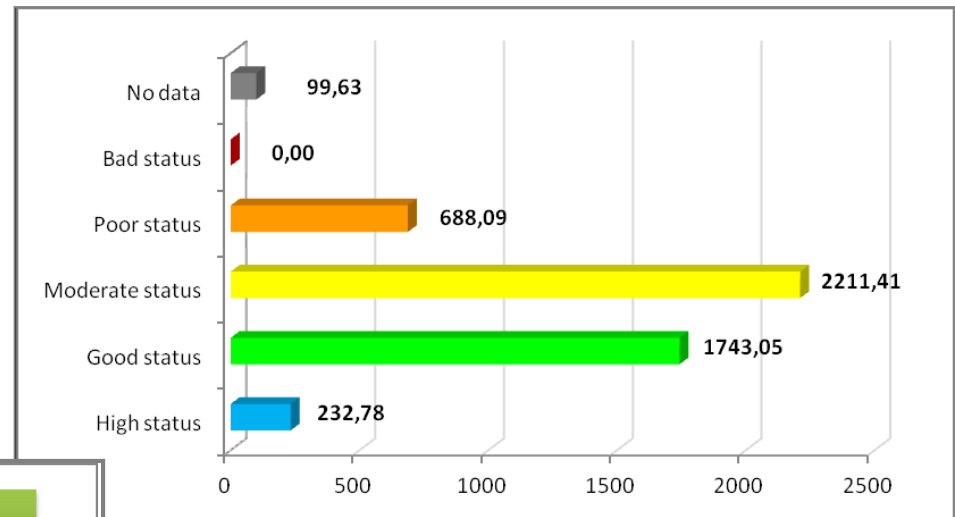
- Data on **topography and hydrography**
- Data on **land cover, eco-regions, WBs, protected areas**
- Data on **pressures**
  - Pollution (organic, nutrients, hazardous substances)
  - Hydropower, water supply and flood protection facilities
  - Pressures on groundwater and sediment
- Data on SW and GW **monitoring systems**
- Data on **water uses and economic data**



Expert Group on Flow Regulation and Environmental Flows meeting, Zagreb, 11-12 June 2019

# Sava RBM Plan

- Water status assessment
- Vision and management objectives
- Programme of Measures



# Sava RBM Plan

- **Internal national procedures** (2013)
- Adoption of **Proposal of the Plan** by ISRBC (2014)
- **Approval at MoP 5** (2014)





# River basin management

- **2<sup>nd</sup> RBM planning cycle** in progress
  - **2<sup>nd</sup> Sava River Basin Analysis (ISRBC, 2017)**
    - Update of the first SRBA
  - **Significant Water Management Issues in the Sava River Basin – Interim Overview, (ISRBC, 2018)**
    - Includes an interim overview of implementation of measures
    - web-based consultation
  - **Outline of the 2<sup>nd</sup> Sava RBM Plan**

