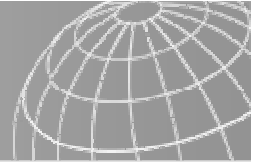


giz



Supporting Transboundary Cooperation and River Basin Plans through Data Management for IWRM in Central Asia



Iskandar Abdullaev, Regional Advisor

A programme
funded by

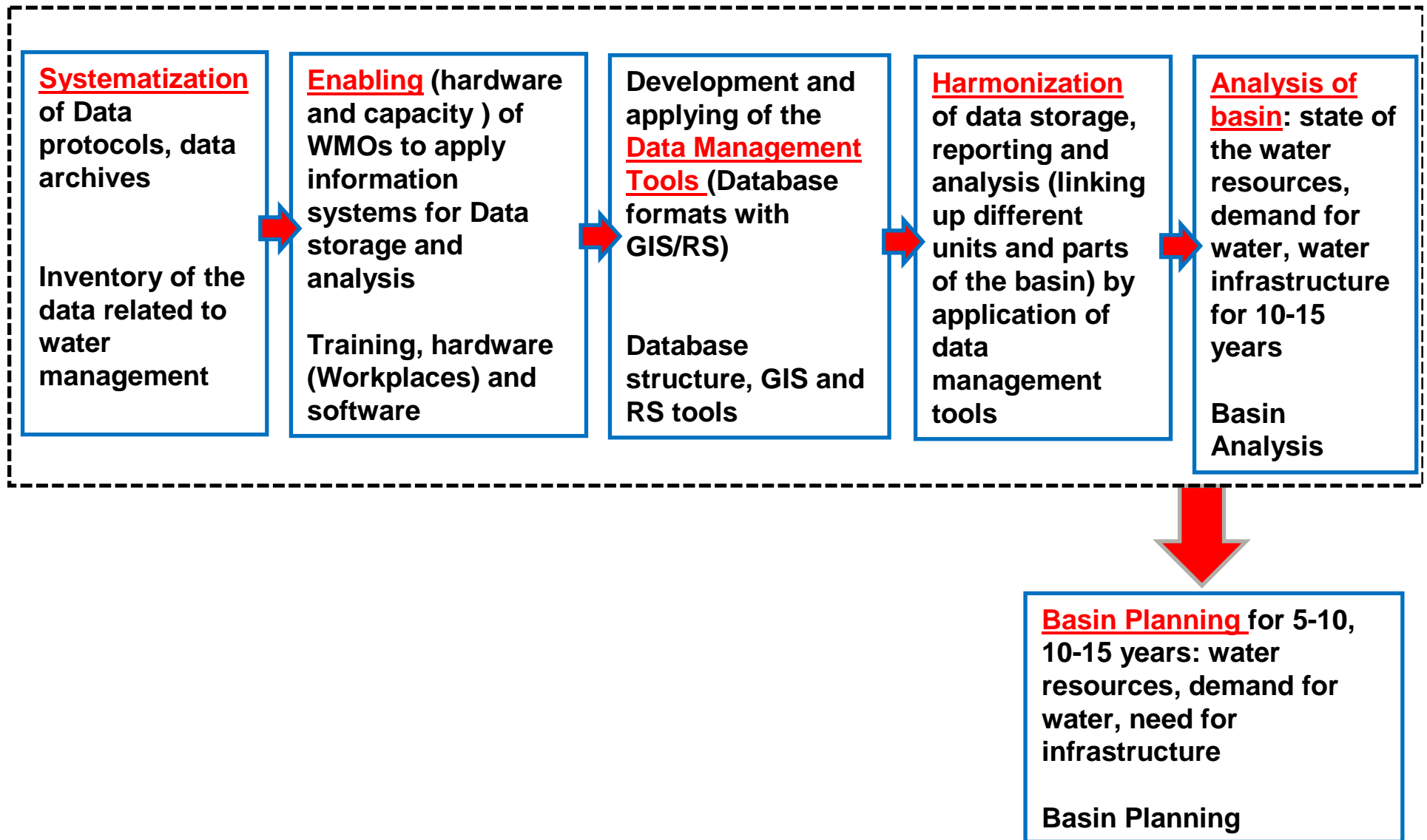
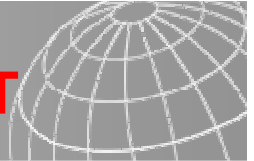


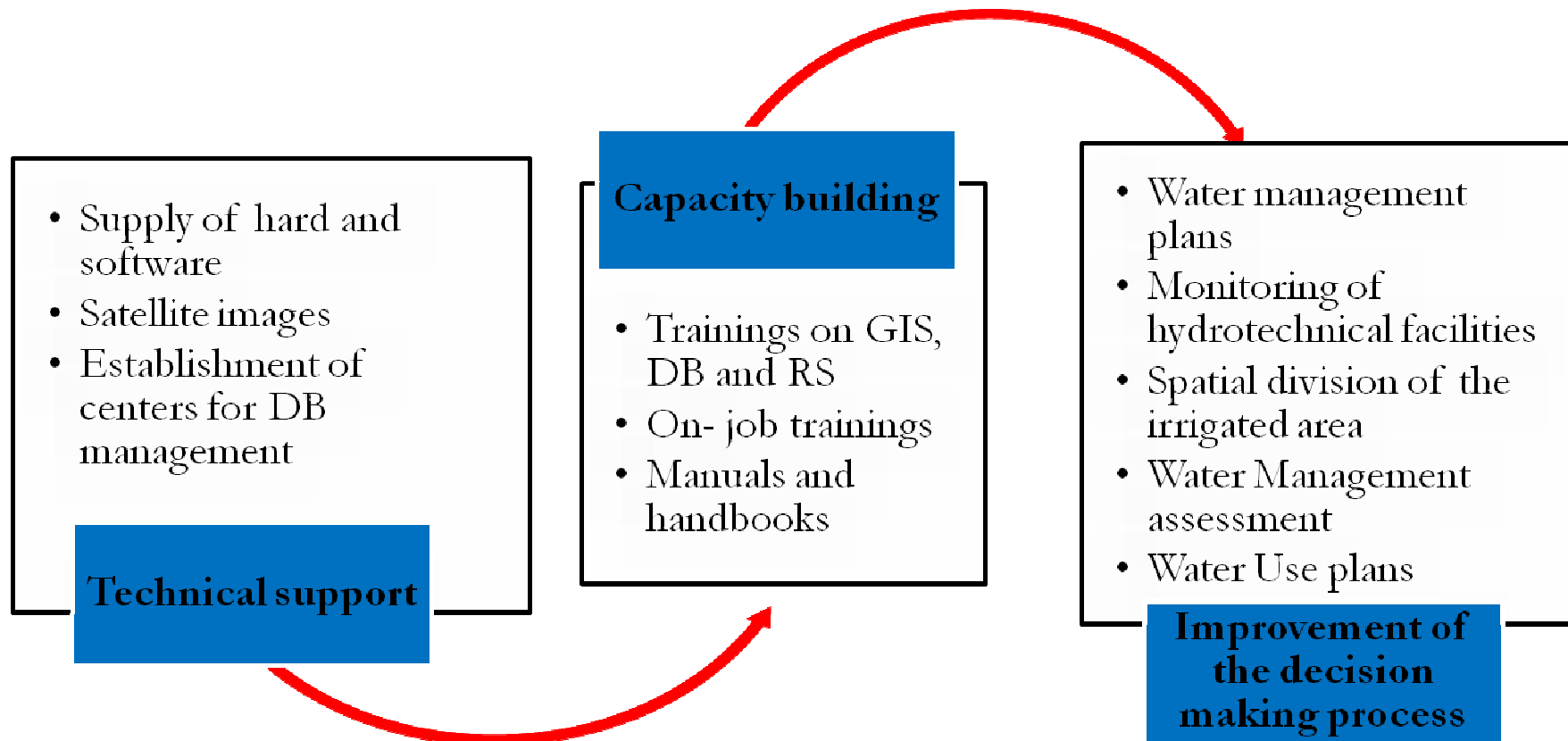
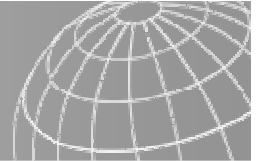
Federal Foreign Office

In cooperation
with



giz LOGICAL FRAMEWORK OF DATA MANAGEMENT



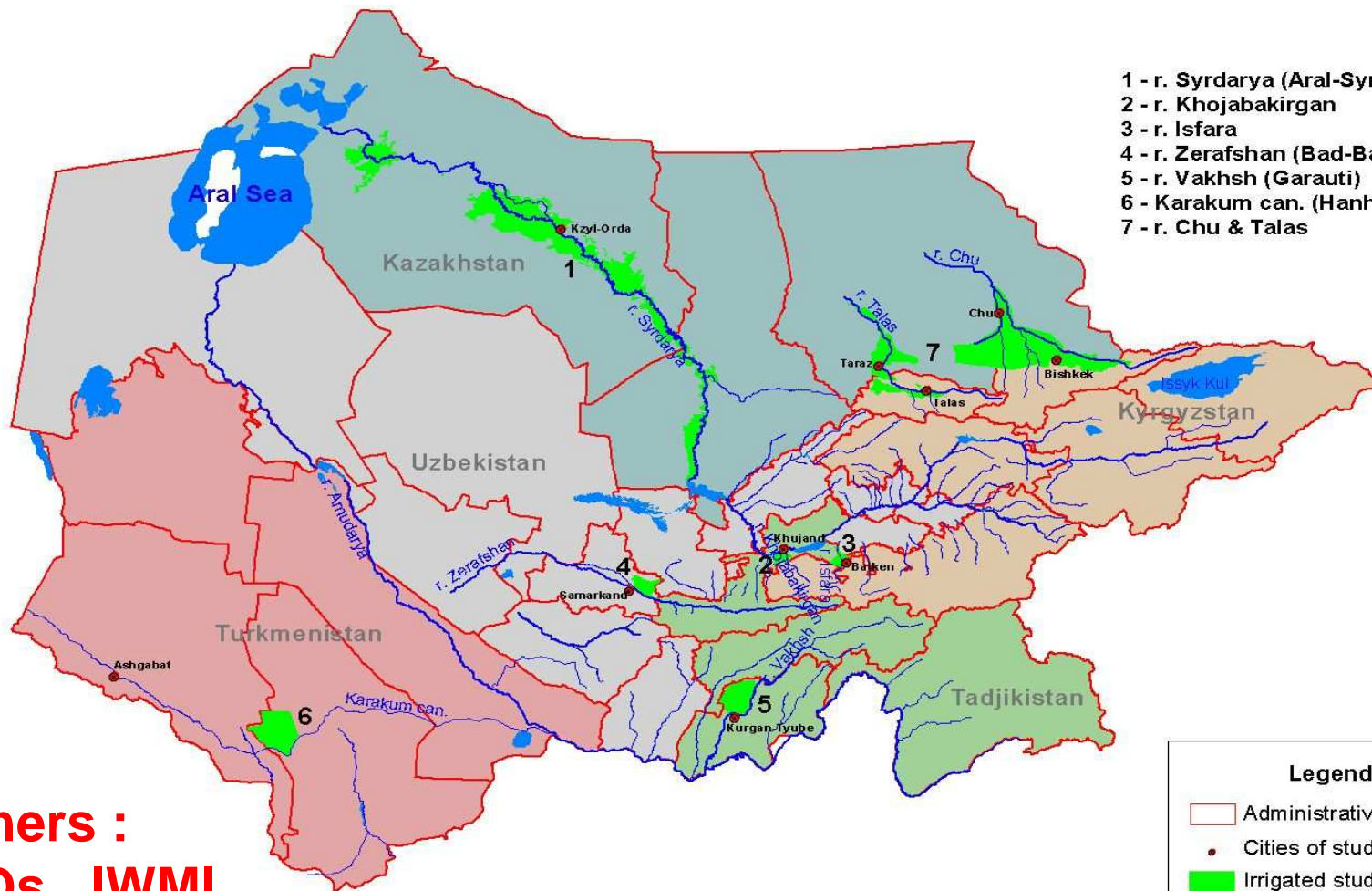




Location of Transboundary Water Management Project's study areas



- 1 - r. Syrdarya (Aral-Syrdarya)
- 2 - r. Khojabakirgan
- 3 - r. Isfara
- 4 - r. Zerafshan (Bad-Bad)
- 5 - r. Vakhsh (Garauti)
- 6 - Karakum can. (Hanhowuz)
- 7 - r. Chu & Talas

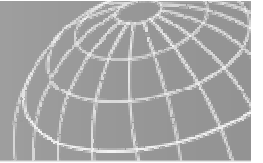


Partners :
WMOs, IWMI
and SIC ICWC

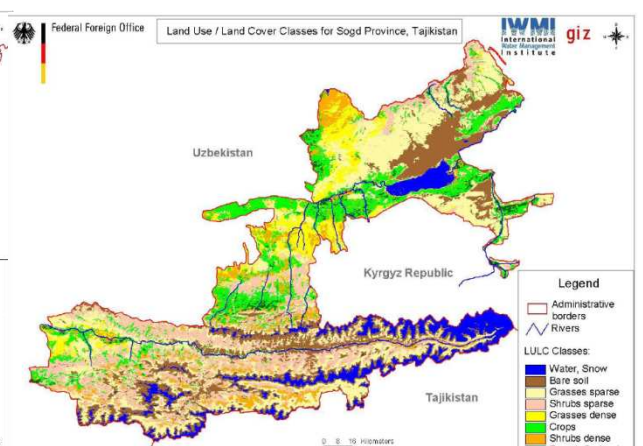
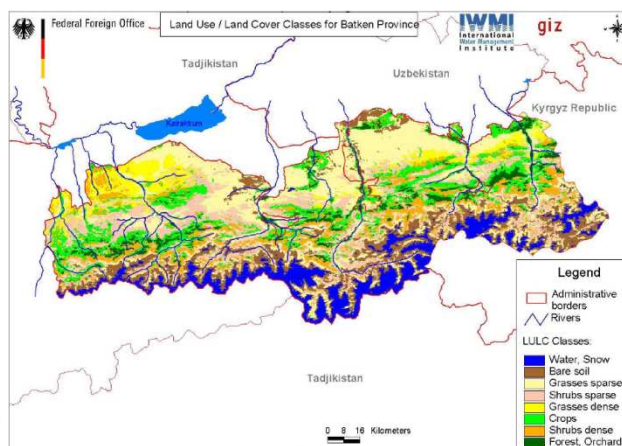
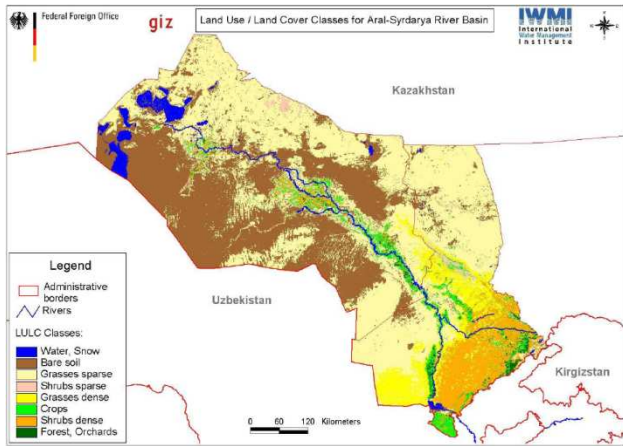
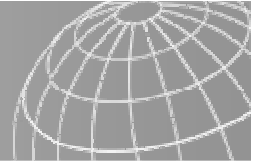
Legend

-  Administrative boundaries
-  Cities of study areas
-  Irrigated study areas
-  Lakes, reservoirs
-  Rivers

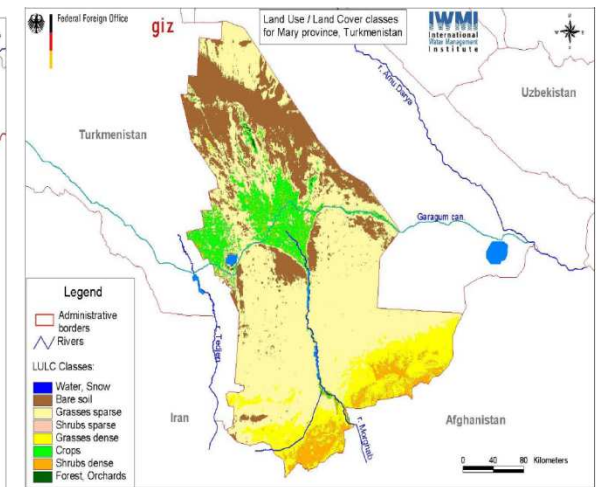
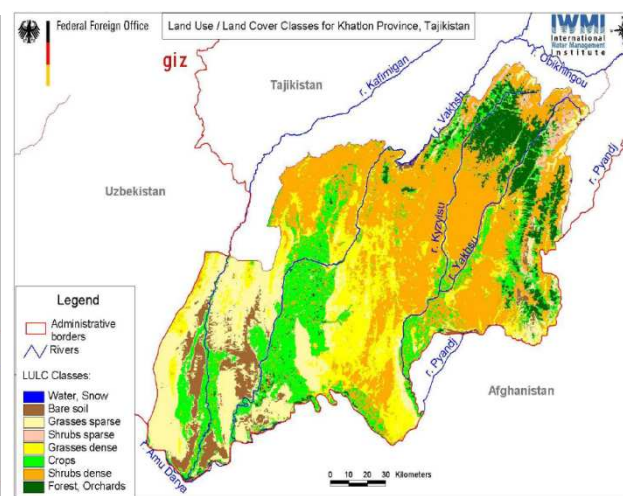
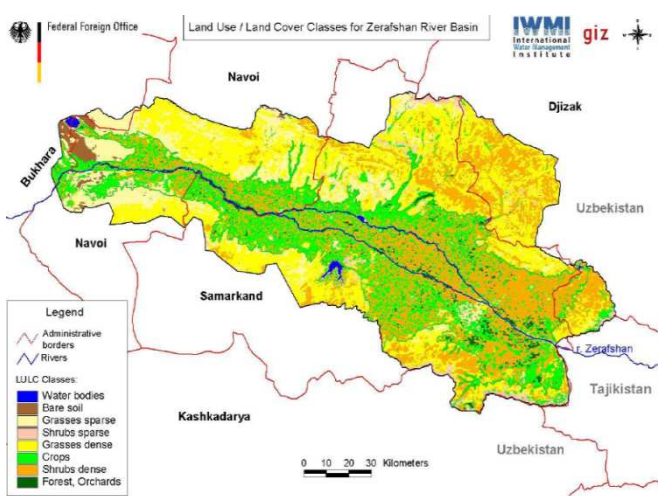


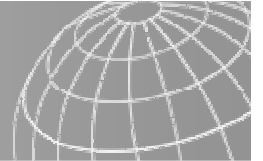


- On line Data Bases:
 - Isfara basin of Kyrgyz part –
<http://river-basins.kg/wmdb>
 - Isfara basin of Tajik part =
<http://www.isfara-wmdb.tj>
 - Serafshan Irrigation System of Uzbekistan-
<http://www.waterdata.uz>



GIS Land use/Land cover maps

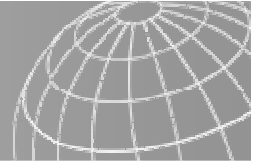




- **Technical capacity in Central Asia to produce reliable data:**
 - hardware and software: Data management workplaces (7 locations) with high-speed computers, scanners and A3 printers, GPS receivers and GIS/Data Base software

- **Capacity to manage data and information as well as modeling**
 - 100 centralized and on job trainings for more than 60 staff of partner WMOs on Data Base and GIS tools

- **Political willingness to share data and information (inter-agency, inter-state, international):**
 - Kyrgyz and Tajik web-based Data bases has a function of data sharing;
 - On-line format of the data base also allows to give easily access to the concerned parties;
 - Series of round table discussions to advocate and promote concept of data transference and data sharing;
 - Three countries have committed their compliance to the data sharing principles in written



- **Stepwise approach on data sharing:**
 - Starting data sharing within and between organizations at the operational level and further up to hierarchical levels (inter- ministerial, interstate);
 - Data sharing requires first and foremost stronger institutional arrangements for such data sharing (joint institutes, framework agreements, etc.)

- **Analysis of data needs and uses in practice:**
 - location and complexity of the water resources planning, distribution and management;
 - determined by the monitoring network;
 - At present: mostly data needed for short-term planning (crops, population numbers, efficiency of water use, discharge of the water, etc.);
 - Longer term planning: dynamics of the economical development, sectoral trends, water policies, climatic information, climate change trends, environmental situation

- **Ideas for developing coordination and synergies**
 - Coordination of the data management activities -regular coordination meetings;
 - Newsletter, titled “Data Management support Regional Cooperation”;
 - Mail list of active DM projects;
 - Data formats that data/information from different data base are exchangeable