



Possible scenarios, risk assessment and location criteria (air path)

Bert Wolting
Centre External Safety
the Netherlands

rivm

Bert Wolting | 22/10/08

1

Presentation outline

Possible *scenarios*, *risk* assessment and *location* criteria for activities involving substances that may cause *fire*, *explosion* and be *released into air* in case of an accident.

- Which scenario's are relevant?
- How to assess the risk?
- How to apply location criteria?

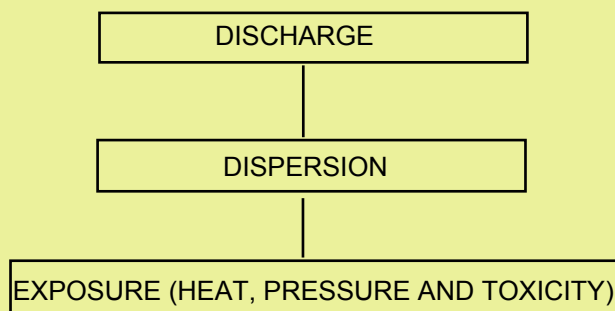
rivm

2

Which scenarios are relevant?

- Fire (exposure to heat)
- Explosion (exposure to heat and pressure)
- Release of a toxic substance into the air

How to assess the risk?



Fire scenario: Example LNG

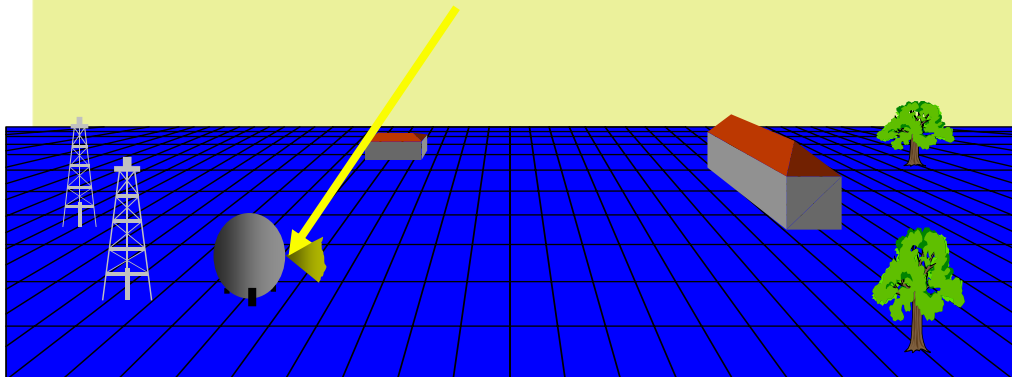


rivm

5

How to assess the risk of heat?

1. DISCHARGE of flammable substance

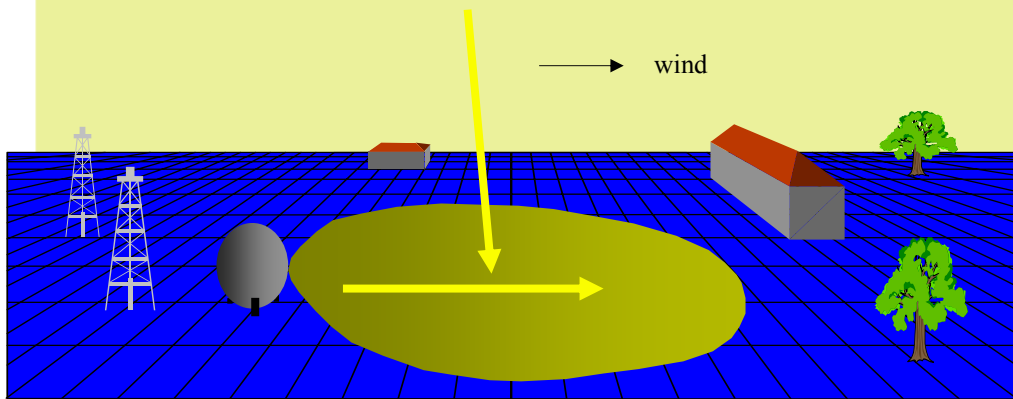


rivm

6

How to assess the risk of heat?

2. DISPERSION of flammable substance

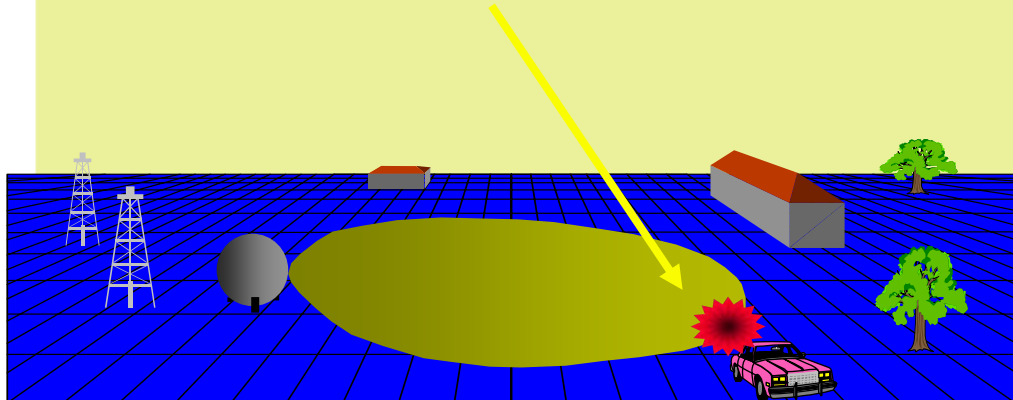


riym

7

How to assess the risk of heat?

3. IGNITION of flammable substance



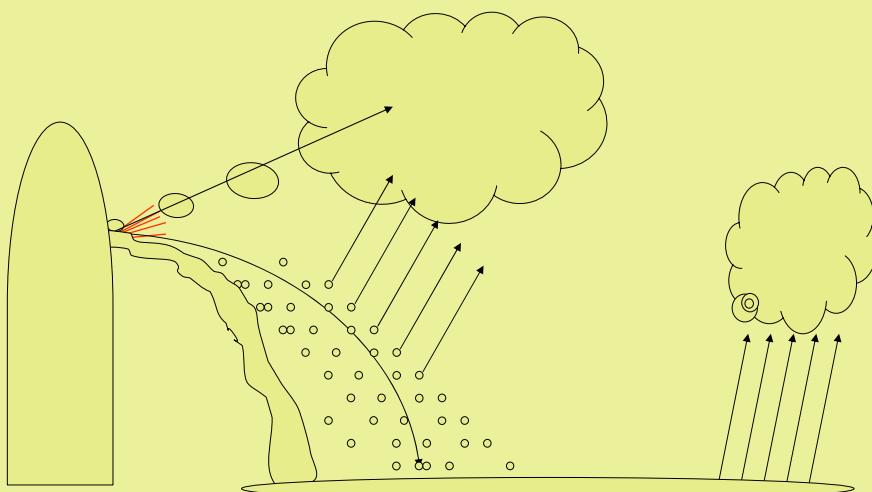
riym

8

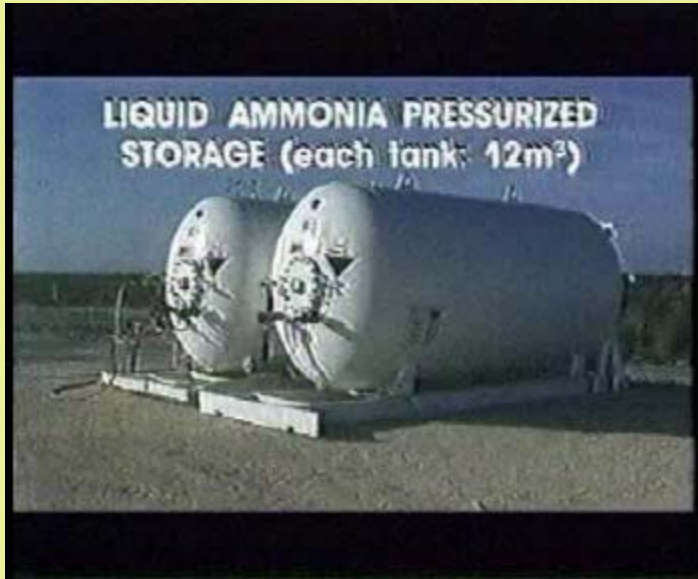
How to assess the risk of heat and pressure? Explosion scenario: Example LPG



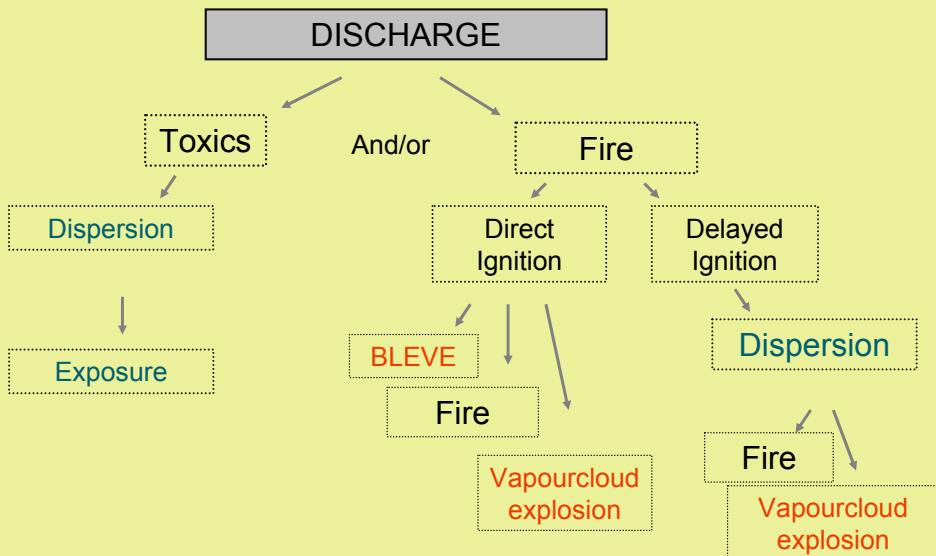
How to assess the release of a toxic substance?



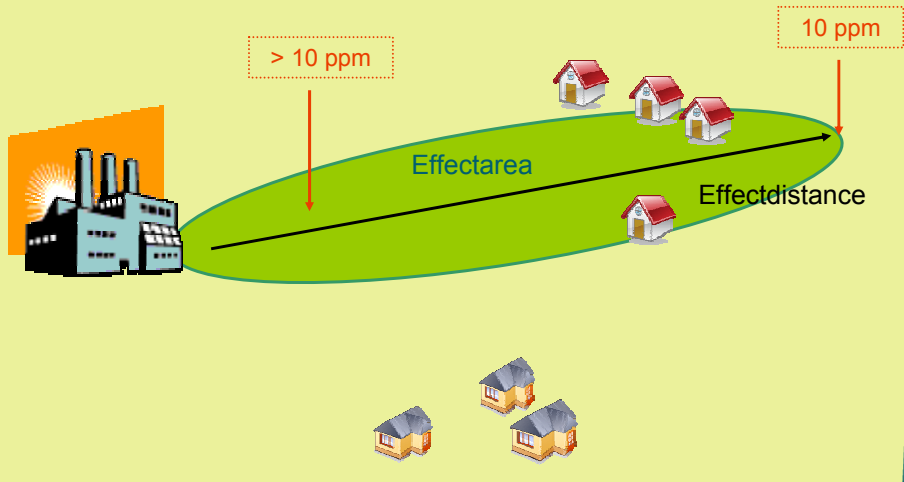
Toxic scenario: Example ammonia



All incident scenarios in a diagram



How to apply the location criteria? (in a model)



How to apply the location criteria? (on a map)

