

ROMANIAN INIS GEOPORTAL - Ministry of Defence component

TF Aarhus Convention, Geneva, 8-10 December 2015

The GD/2015 set up the responsibilities of the public authorities involved in implementation of INSPIRE in Romania

1. The responsibilities for spatial data sets for each theme from INSPIRE directive:

- The public authority which are responsible for each theme;
- The public authority that contribute with spatial data sets to each theme.

2. The responsibilities for services from INSPIRE directive:

- The public authority which is a provider of services.

Summary

1. Military Topographic Directorate (MTD)'s WEB Site
2. Geoportal and WEB Services
3. HW & SW Architecture of MTD's Geoportal
4. Availability of Services
5. Geoportal extension

MTD's WEB Site

WWW.GEOMIL.RO

1. General Information: history, command, projects
2. Structure
3. Products and Services
4. Product Catalogue and Price List
5. International Record (Ventures)
6. Events (pictures)
7. **Link to GEOPORTAL**

Geoportal

What is a Geoportal?

- "A web site where geospatial resources can be discovered"
- Broker between data providers and users
- Contains only metadata
 - Resources discovery
 - Resources assesment
 - Terms and conditions
 - Contract between provider and user
- DOESN'T contain data/services

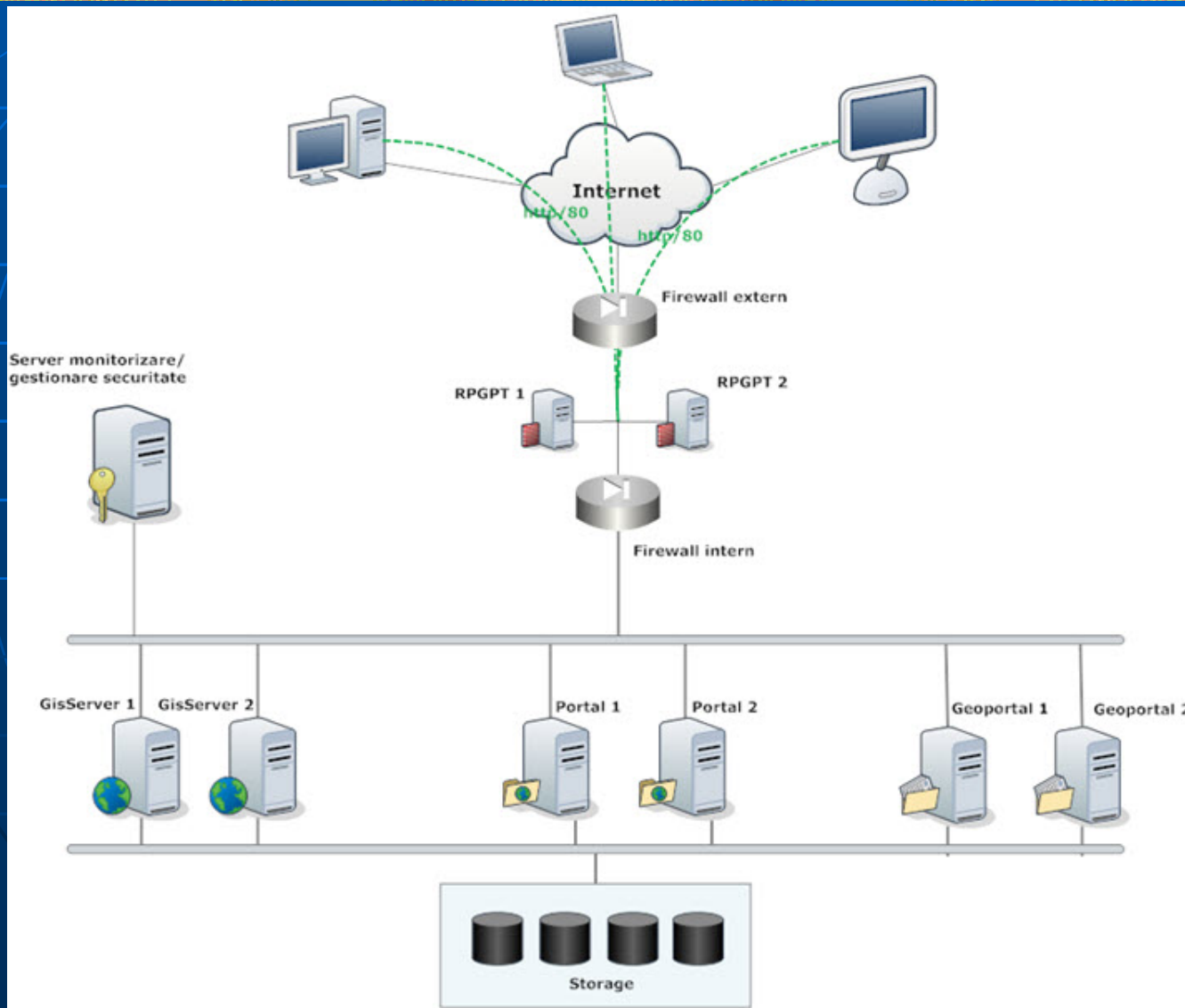
Web Services

“A Web Service is a software application that works on a web server and exposes programming interfaces for other Web applications”

Types of services implemented:

- Visualize
- Search
- Download
- Geoprocessing (Spatial Analysis)

HW architecture of MTD's Geoportal



SW Components

No.	Name	Software
1	Server reverse proxy (RPGT1/2)	Red Hat Enterprise Linux – 2 VMWare for Server – 1 Apache HTTPD (WaF module included) – 2 Java SDK – 2 ESRI JavaScript API – 2
2	GIS Server1/2	Windows server – 2 VMWare for Server – 1 ArcGIS Server Enterprise Advanced – 1 ArcGIS Image Server Extension – 1 ArcGIS for Inspire – 1 ArcGIS Desktop – 1 SQL Server Express – 2
3	Portal server	Red Hat Enterprise Linux – 2 VMWare for Server – 1 ArcGIS for Portal – 1
4	Geoportal server	Red Hat Enterprise Server – 2 VMWare for Server – 1 Oracle Glassfish Open Source Edition – 2 Sun OpenDS – 2 Java SDK – 2 ESRI JavaScript API – 2
5	Monitoring solution	NAGIOSCore – 1

Web Connection of Geoportal

Local loop communication services with following characteristics:

- dedicated level 2 permanent connection
- the provider must ensure traffic separation for this connection (dedicated VLANs)
- 1000 Mbps media converter;
- access availability = 99,90%;
- latency/1000pcs < 30 ms;
- lost packets < 1%;
- guaranteed bandwidth : 100%.

Available services

Search and **visualize** services – MTD is responsible according to GD /2015

1. Geographical names
2. Orthorectified aerial imagery (2010-2013)
3. Elevation

Available services

Visualising services for other MTD data :

- Base vector map
- Military maps – scanned and georeferenced
 - Military Topographic Map 1: 25K
 - Military Topographic Map 1: 50K
 - Military Topographic Map 1: 100K
 - Military Topographic Map 1: 200K
 - Military Topographic Map 1: 1000K

Future improvements

- English version for web site and geoportal
- Improve the complexity of the base map
- Implementation of the download services
- Implementation of the geoprocessing services
- Evaluation of the e-payment facility

opportunity

CONTACT

WWW.GEOMIL.RO

Address: B-dul Ion Mihalache nr. 124-126,
sector 1, București, România

Phone: +4 021 224.26.56

Fax: +4 021 224.26.47

E-mail: contact@geomil.ro

Thank you for your attention !

Elena Dumitru, MP

Permanent Mission of Romania to UN Office at Geneva

elena.dumitru@romaniaunog.org