



Case Studies in Strategic Environmental Assessment

Matthew Cashmore
Consultant to UNECE
Baku, 6 April 2018

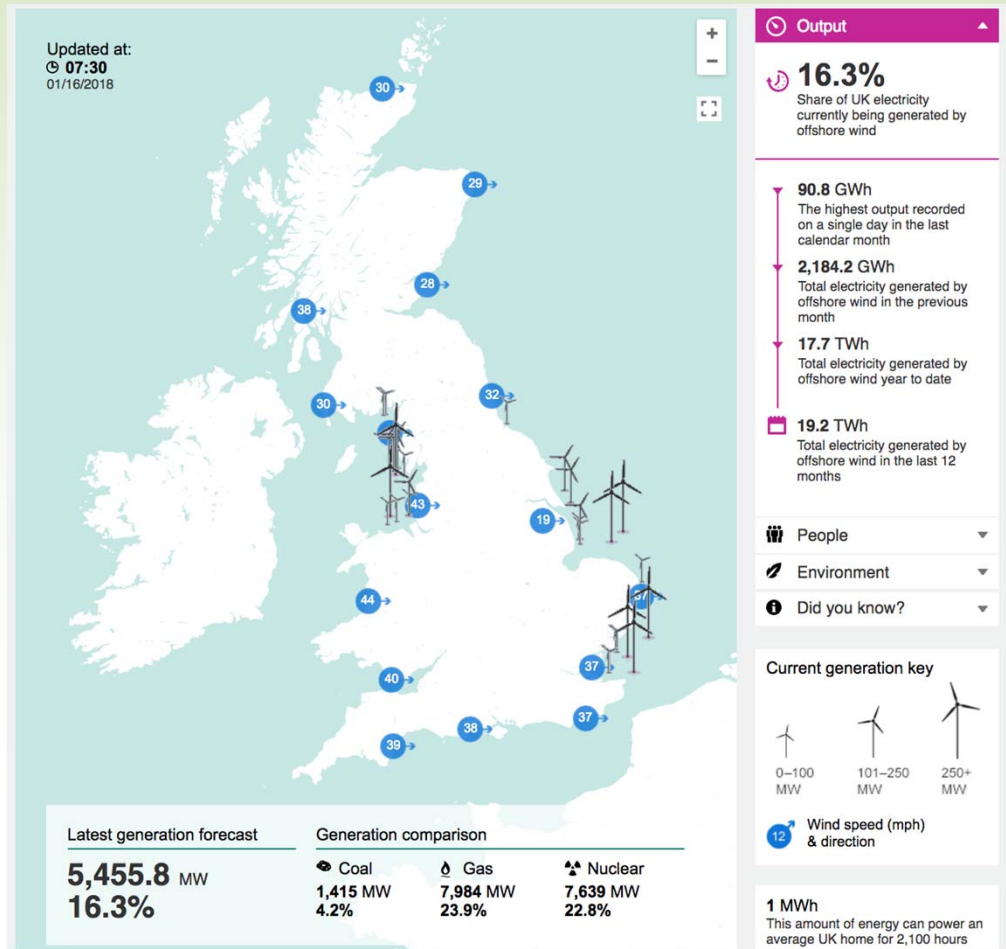
SEA of Offshore Wind Farms – United Kingdom



EaPGREEN 
Partnership for Environment and Growth



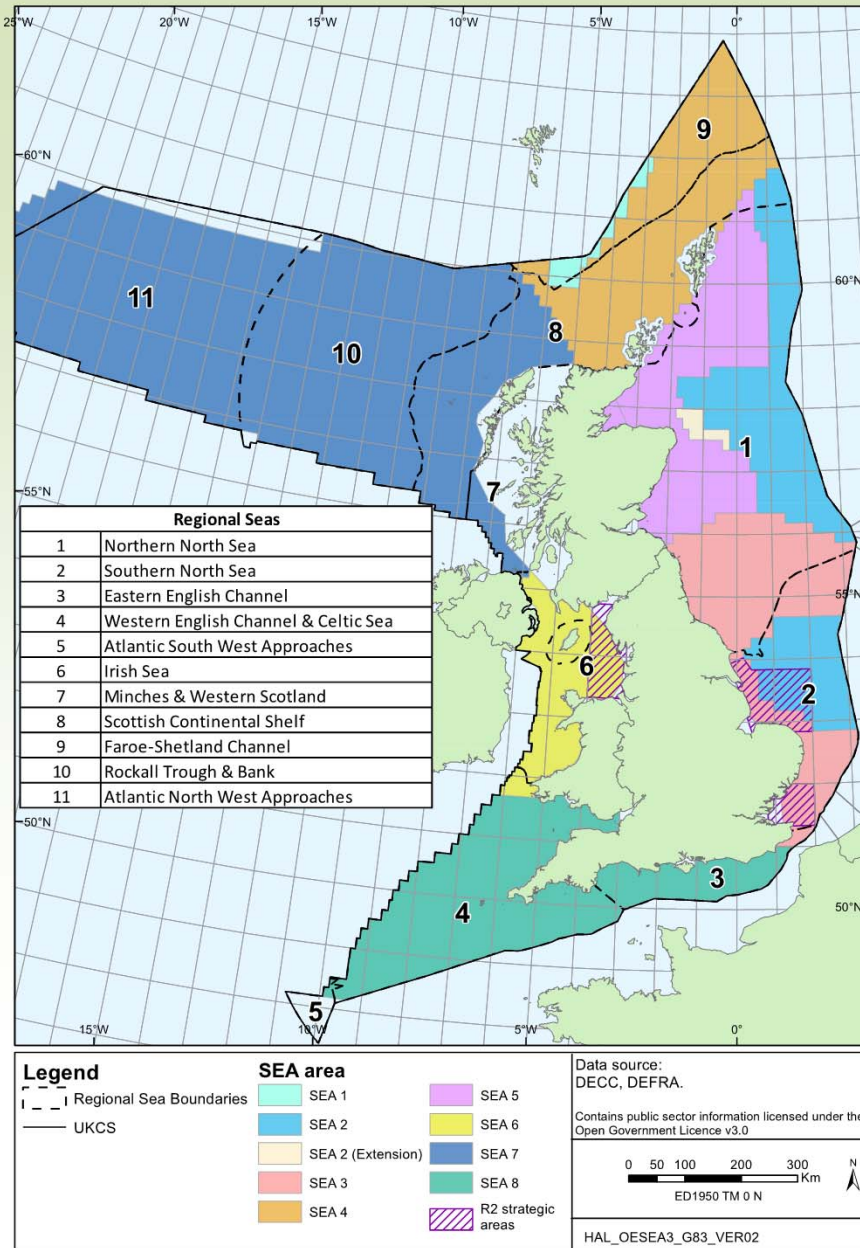
Energy Generation from Offshore Wind - 2018



Data from 16 January 2018.
Source:
www.thecrownestate.co.uk

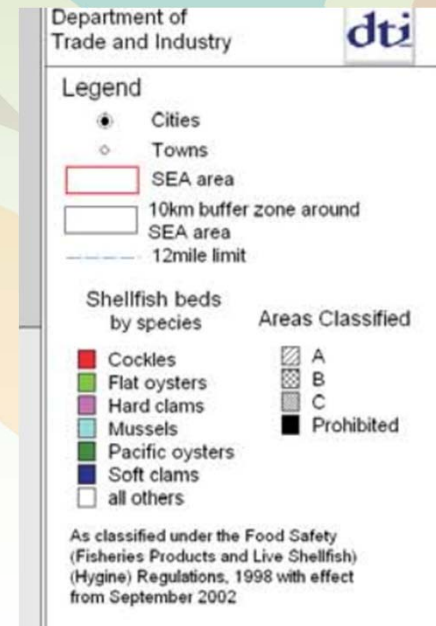
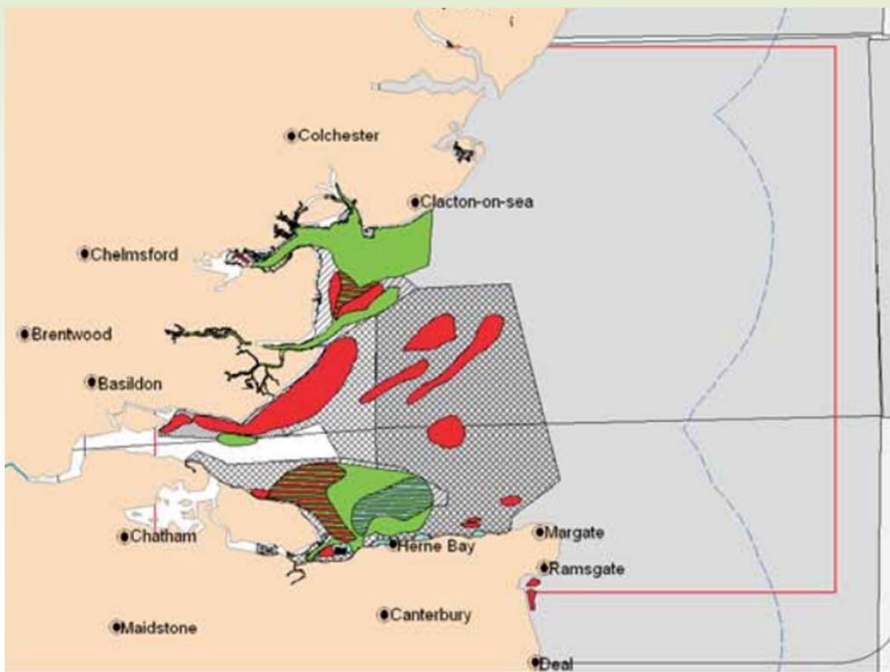
28 February 2017

Zoned approach to SEA of offshore energy



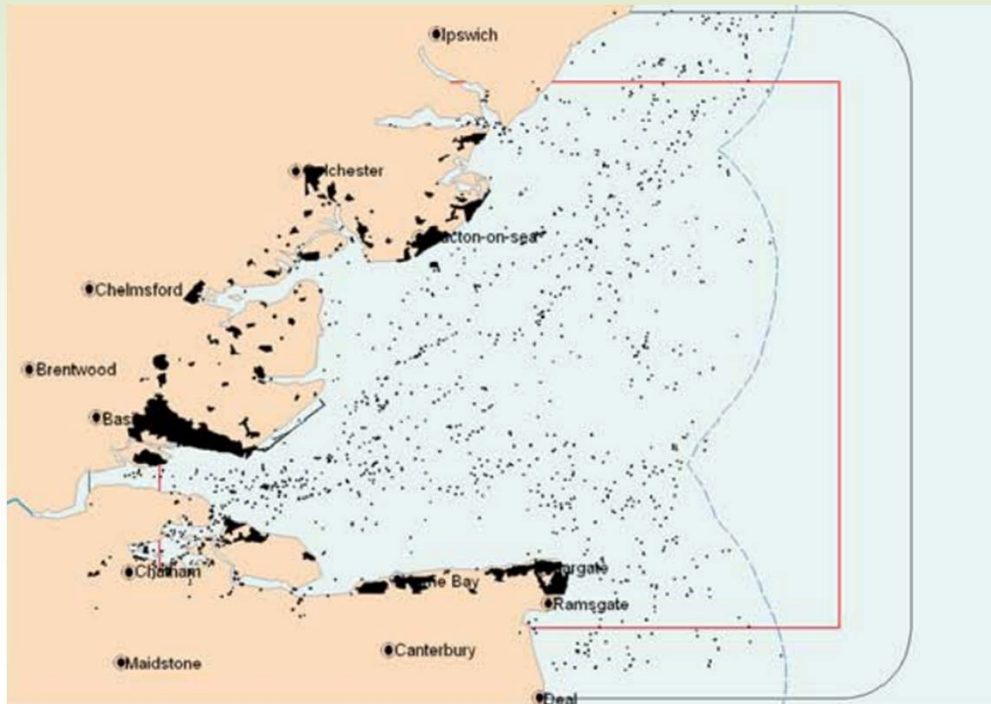
28 February 2017

Constraints mapping (1)



28 February 2017

Constraints mapping (2)



28 February 2017

Impact Forecasting

- Sandbank mobility
- Changes to seabed morphology
- Scouring of sediments
- Changes to flow regime and wave direction
- Changes to coastal sediment budgets

- Loss of food resources for faunal groups
- Interruption of migratory routes (fish)
- Disturbance of birds
- Bird strikes

- Loss of shellfish beds
- Impacts on fisheries

28 February 2017

Scenarios

Scenario	Liverpool Bay (MW)	Greater Wash (MW)	Thames Estuary (MW)	Total
Likely (2010)	800	1,600	1,200	4,000
Maximum credible (2010)	1,500	2,500	2,000	7,500
Likely (2020)	1,500	5,000	1,700	10,200
Maximum credible (2020)	3,000	7,000	5,000	17,500

Note; total allows for some development development outside of the Strategic Areas.

Good Practices

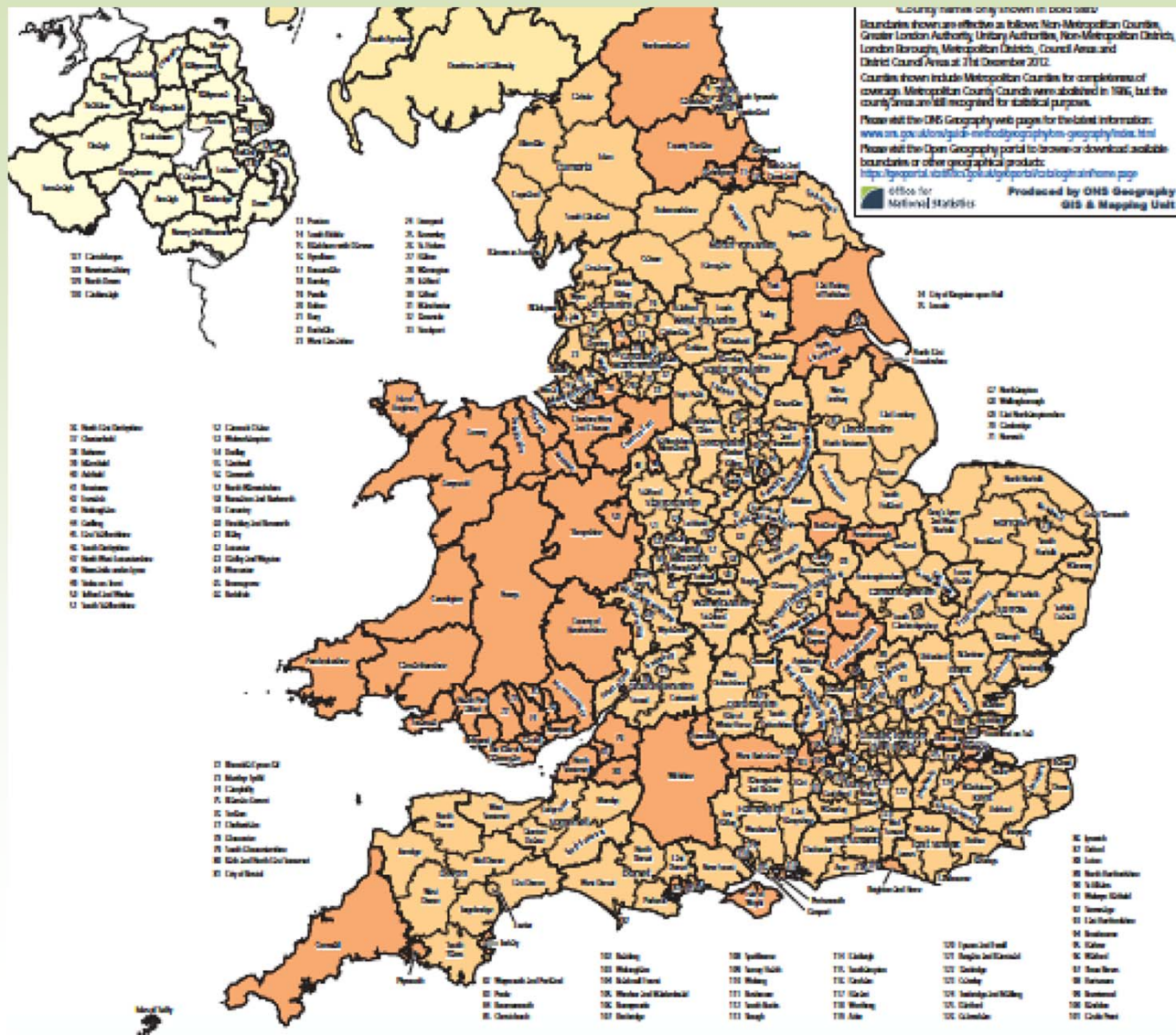
- Established an offshore SEA Steering Group:
 - Provide advice to facilitate SEA process;
 - Promote stakeholder involvements;
 - Achieve timely preparation of quality documents.
- Online portal hosting all data collected during SEAs and EIAs.
- SEA recommendations / implementation auditing
 - Compilation of recommendations from SEAs and action status.
- SEA Research Programme:
 - Commission research in response to identified data gaps.



Local Land Use Plans

England and Wales

28 February 2017



28 February 2017

Scoping Reports

Contents

1	Introduction	1
2	The SA / SEA of Local Plan Documents	5
3	Topic Based Assessment of PPPIs, Baseline and Sustainability Issues	14
4	Developing the Sustainability Assessment Framework (Sustainability Objectives and Indicators)	25
5	Next Steps	
■ Appendices		
1	Compliance with the European Objective	
2	Schedule of Policies, Plans, Programmes, Strategies and Initiatives (Separate Document)	
3	Short Summary of the PPPSI's (Separate Document)	
4	Baseline Information (Separate Document)	
5	Sustainability Objectives Compatibility Matrix (Separate Document)	

Sustainability Theme: Prudent use of natural resources

18	To achieve sustainable production and use of resources.	<p>Will the alternative / option:</p> <ul style="list-style-type: none"> • help reduce the environmental impacts of products and services? • help stabilise and / or reduce the District's ecological footprint? • encourage self-sufficiency? • encourage the use/supply of sustainable and/or local products/services? • reduce the use of primary resources, or create markets for recycled materials? • increase residents' awareness of the environmental impacts of their lifestyle choices? • promote reuse and recycling of materials? • help ensure that minimal non-renewable resources are used in construction? • help minimise the "whole life cycle" use of natural resources? • allow the efficient storage and collection of waste? • facilitate the provision of additional sustainable waste management capacity, avoiding the need to landfill? • allow waste to be managed close to where it arises? • minimise the production of waste? • safeguard water resources to maintain an adequate level of river and ground water?increase the demand for water? • encourage water to be stored for re-use?
----	---	---

'Mole Valley' District Council, 2013

28 February 2017

Partnership for Environment and Growth

This project is funded by the EU



Consultation: Strategic & cross boundary issues

Duty to Co-operate Scoping Statement



- Neighboring municipal councils;
- National (prescribed) bodies.
- Other relevant bodies (e.g. water companies, airport)
- Existing stakeholder groups.

28 February 2017

Objectives

	1	2	3	4	5
Key Compatible: green Inconsistent: red Uncertainty: yellow No link /neutral: blank	Quality housing available to everyone	Conditions and services to engender good health	Safety and security for people and property	Vibrant communities that participate in decision making	Culture, leisure and recreation facilities for all

	1	2	3	4	5
To contribute to sustainable patterns of development, the Local Plan will:					
1.Focus housing and employment development in locations which are, or can be made, sustainable; these are locations that take full advantage of existing opportunities to walk, cycle, or use public transport, or have the potential to increase these opportunities, in order to access jobs, shops, services and facilities.	compatible	compatible	compatible	compatible	compatible

	1	2	3	4	5
To address housing needs for all, the Local Plan will:					
2. Deliver additional market and affordable housing in sizes, types and tenures, and at a scale that meets locally identified needs.	compatible			compatible	

	1	2	3	4	5
To support business, enterprise, and job creation in order to achieve a sustainable and diverse economy througho					
3.Deliver sufficient land for employment uses to improve choice and help to enable a thriving economy.					

Compatibility assessment:
are the local plans objectives
compatible with
environmental/sustainability
objectives

Assessment of Draft Policies

Draft Policy HS8: Extensions to Dwellings

Extensions to dwellings will be permitted provided that all the following requirements are met:

- A. *There is no adverse impact on neighbouring residential amenity.*
- B. *There is no adverse loss of parking or garden/amenity areas.*
- C. *There is no adverse impact to the character or appearance of the dwelling or the surrounding area.*
- D. *The extension should not be designed to facilitate the subdivision of the dwelling into separate dwellings nor undermine the retention of any occupancy condition.*

Policy background

This is a slightly amended version of Policy HS5 included in the draft Development Management Policies (November 2015): the use of the word 'unacceptable' has been replaced with 'adverse'.

Initial SA Assessment

The policy sets out the requirements that must be met to ensure that an extension is acceptable, where planning permission is required. Effects are unlikely to be significant with positive effects in respect of the natural and historic environment as the policy seeks to ensure that extensions to dwellings are sympathetic to local character and amenity.

Short/medium/long term effects

The effects are anticipated to extend over the short to long term.

28 February 2017

Good Practices

- Strong procedural framework, strong compliance with legislation, and generally quite thorough assessments.
- Well integrated with planning and decision-making.
- Reasonably good level of ownership by planners.

The Downside!

- Is the system efficient?
 - e.g. Voluminous documents: e.g. Harrogate, SEA main report 1152 p., plus scoping report, and many other associated documents



Questions or comments?