



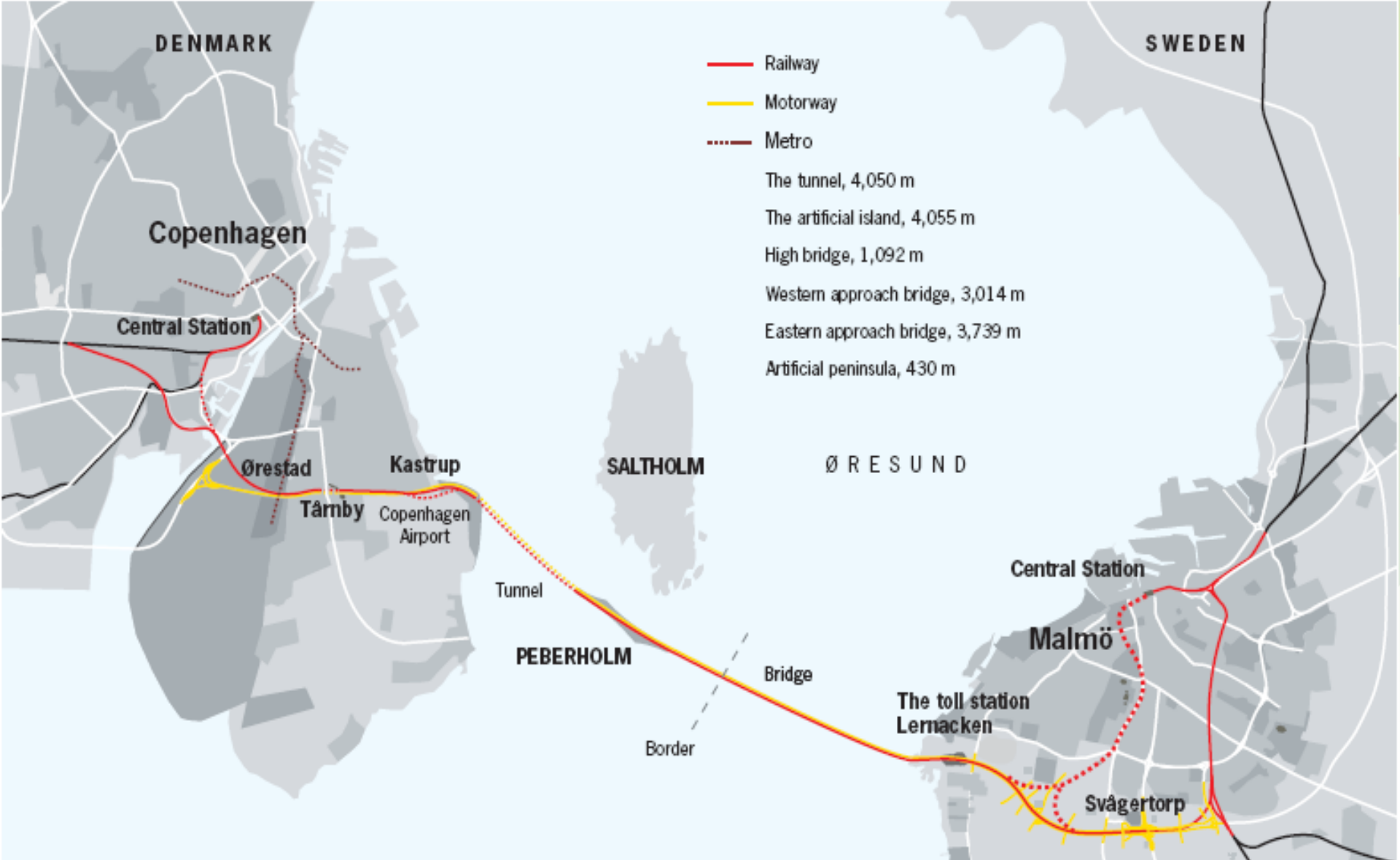
# ***Cost of inaction: Large-scale Projects – the Öresund Bridge***

Adapted from: Eric Markus  
Blekinge Institute of Technology  
**Sweden**

# The Öresund Bridge

- Malmö, Sweden – Copenhagen, Denmark
- Road & railway link
- Cable-stayed bridge
- Artificial island
- Immersed tunnel
- Total ~16 km (10 miles) long
- Decided in 1991/94
- Opened year 2000
- Cost (1990 prices): USD ~2.35 bn.





© Øresundsbro Konsortiet

# EIA

- No explicit goal/purpose stated in EIA
- Only a limited number of alternatives considered – unclear selection criteria
- No discussion of alternative locations or ‘non-structural’ alternatives
- Limited consideration of connected projects or their cumulative impacts on the environment
- EIA did result in:
  - Limits on dredging
  - Design, location of artificial island changed slightly

# Costs

## THE LINK HAS SIGNIFICANT STRATEGIC IMPACTS:

- Copenhagen and Malmö became one combined labour and housing market. Institutional barriers originating in different tax, employment and the welfare systems in the two countries was underestimated and had impeded regional and economic integration. Long term effects on the ecological system are still unclear.

([http://beyondplanb.eu/project\\_oresund\\_bridge.html](http://beyondplanb.eu/project_oresund_bridge.html))

- Social –social structure of Malmö; population density; educational preferences
- Economic - cod and other fish populations- fisheries; common market; employment; commuting and transportation; housing pricing; etc
- Environmental: wild birds and other endangered species
- ‘Environment’ in Gov’t reports about the bridge:  
Until 1980s only conservation of agricultural land & conservation of outdoor recreation areas; end of 1980s focus shifted to:  
Water flow (saline water North Sea → Baltic Sea) & some transport/traffic pollution issues

<http://www.thelocal.se/20140625/bridge-malmo-copenhagen>

- Of the 8,450 Danes who live in Malmö many have made the switch due to the vastly different marriage laws which exist on both sides of the bridge
- **The bridge made Malmö a suburb of Copenhagen**
- Systembolaget, Sweden's state controlled liquor store bolts up for the weekend at 3pm on a Saturday



[http://www.wallpaperspictures.net\\_oresund-bridge](http://www.wallpaperspictures.net_oresund-bridge)

# Costs of inaction : BP

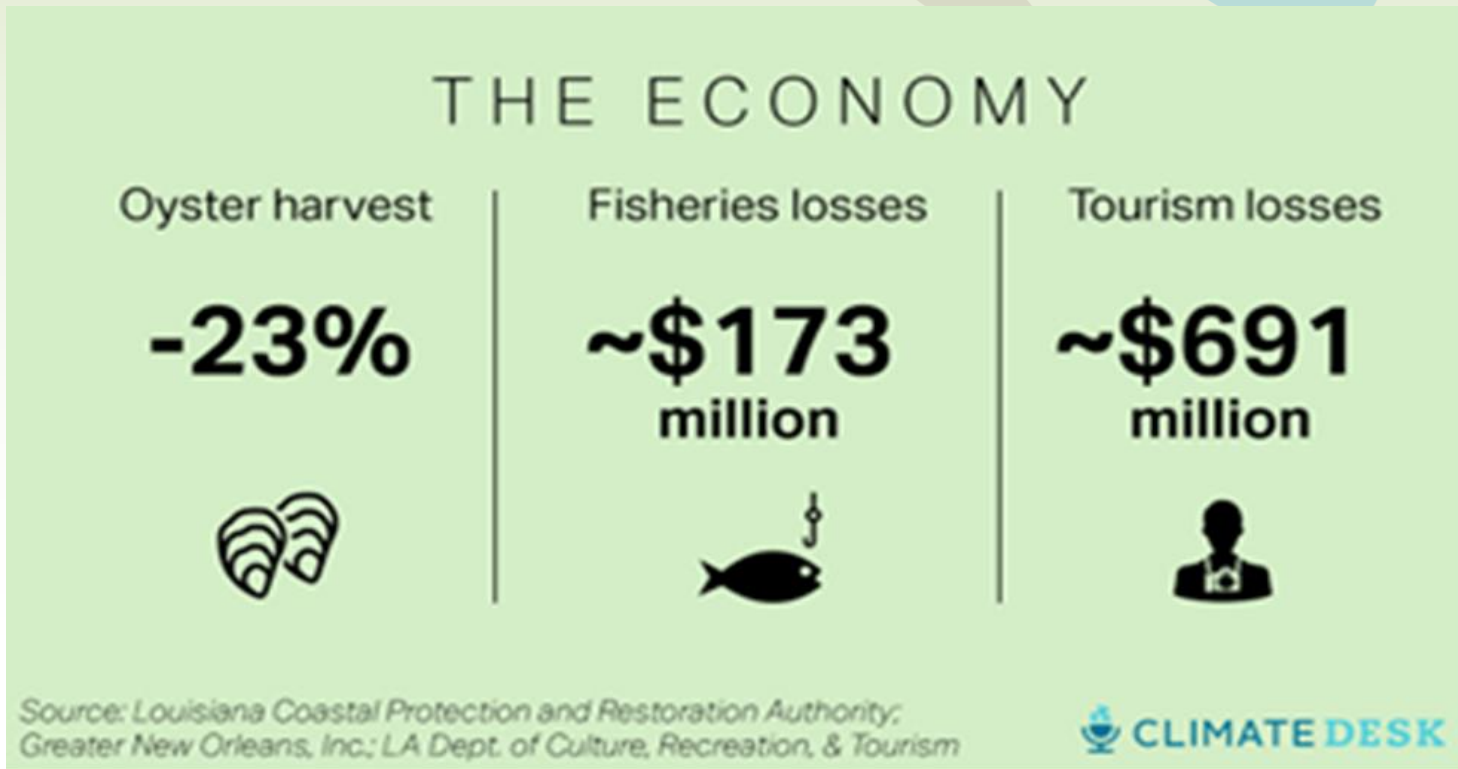
- This oil spill is the largest in human history





# The Wall Street Journal: BP Agrees to Pay \$18.7 Billion to Settle Deepwater Horizon Oil Spill Claims

## Settlement of all federal and state claims brings total costs to nearly \$54 billion





# What could have been prevented?

... we have BP's **hubris**. It simply couldn't imagine or envision this disaster (see "[BP calls blowout disaster 'inconceivable,' 'unprecedented,' and unforeseeable](#)"). Of course hubris leads to recklessness and arrogance — and poor planning. If BP or any other major had thought this type of disaster was conceivable, it would have pre-built and pre-positioned one of those 100-ton domes in the Gulf years ago, rather than waiting until after the disaster to build it. And it would also have put far more in to prevention technology.

[Joseph Romm](#);

[http://www.salon.com/2010/05/10/oil\\_spill\\_causes\\_climate\\_progress/](http://www.salon.com/2010/05/10/oil_spill_causes_climate_progress/)