

---

# Convention on Environmental Impact Assessment in a Transboundary Context, Espoo (1991)

## WG on Environmental Assessment

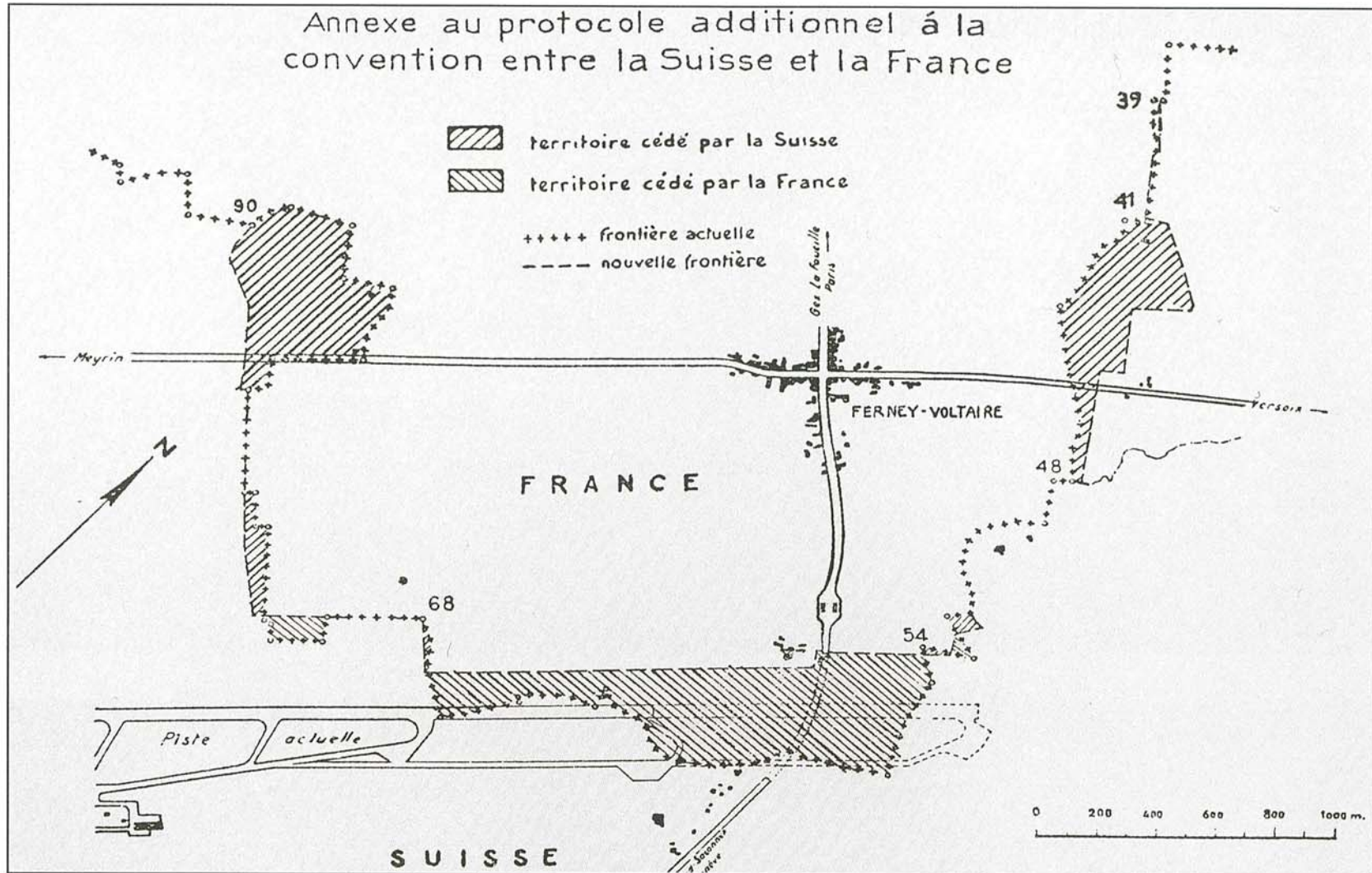
**6 April 2006**

**Marc Mounier**

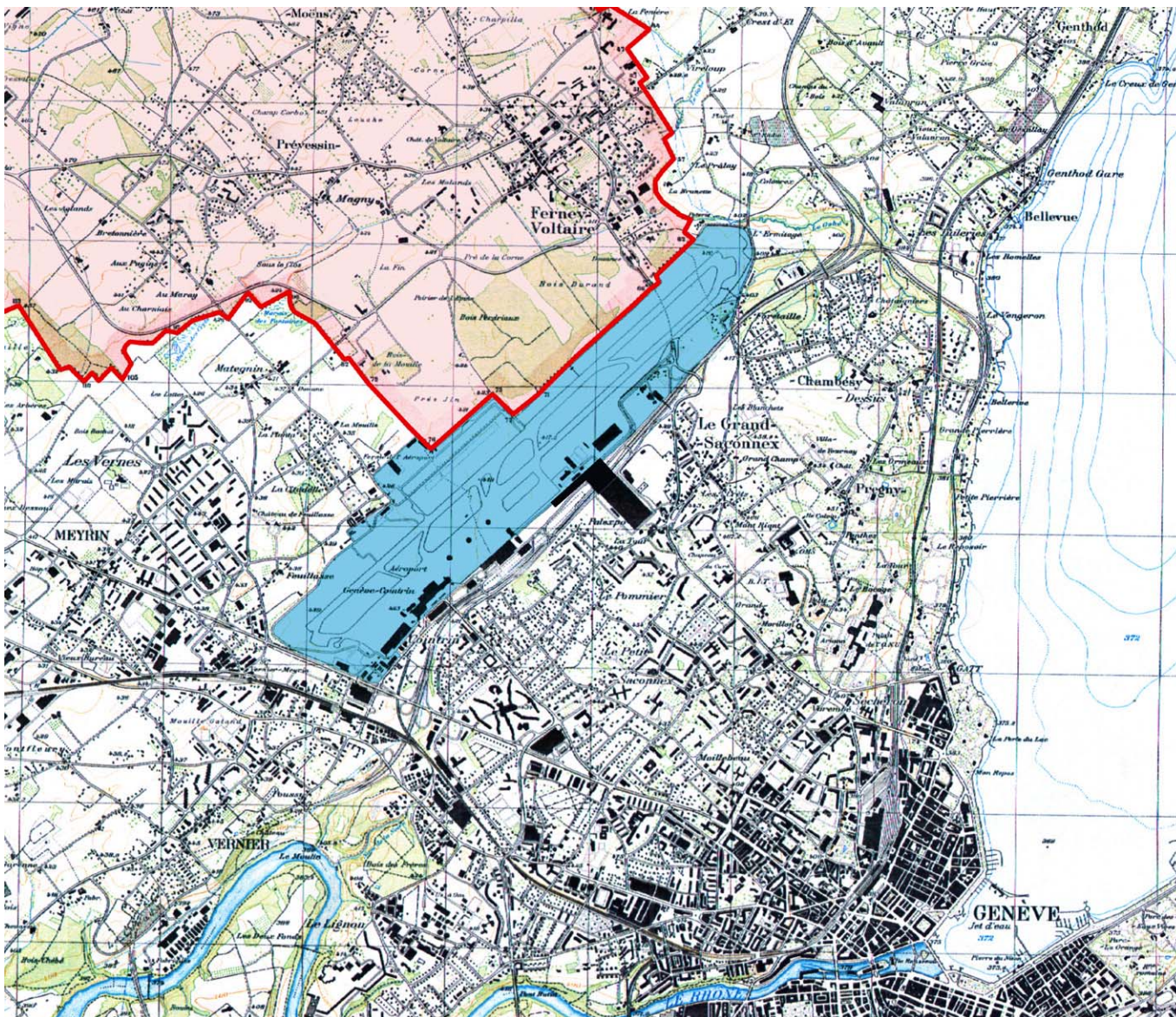
Member of Senior Management  
Head of Environmental and Legal Affairs



# 1956 Convention between France and Switzerland



Signed 25 April 1956

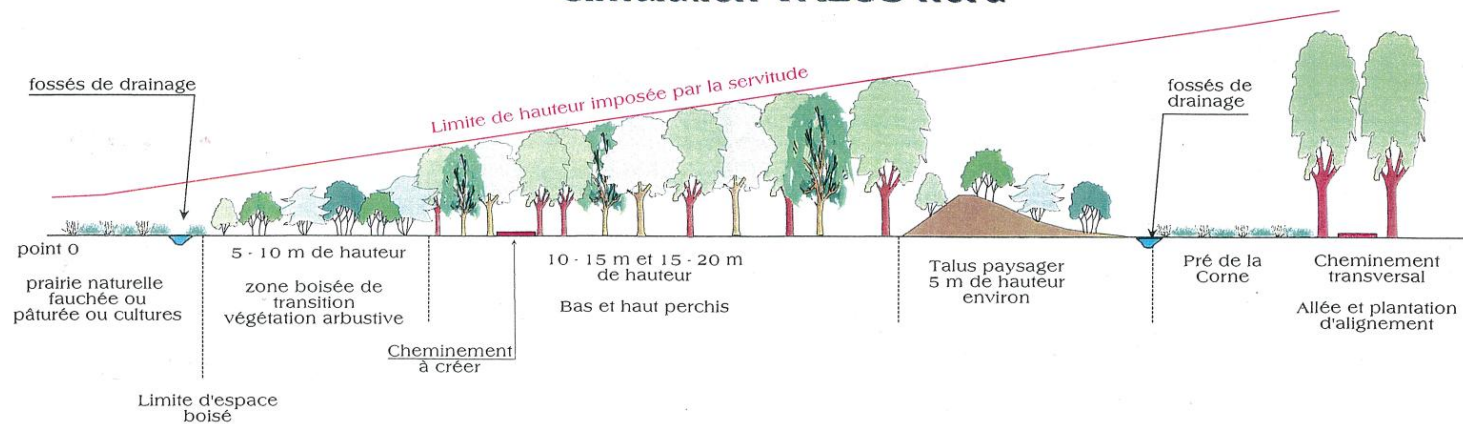


# Bringing the Ferney Voltaire forest (F) into conformity with the Geneva Airport Aeronautical Restrictions Plan

Aspect après la mise en conformité de la forêt  
aux servitudes aériennes, au terme de la gestion prévue à appliquer  
et de la croissance  
des arbres prévus en plantation

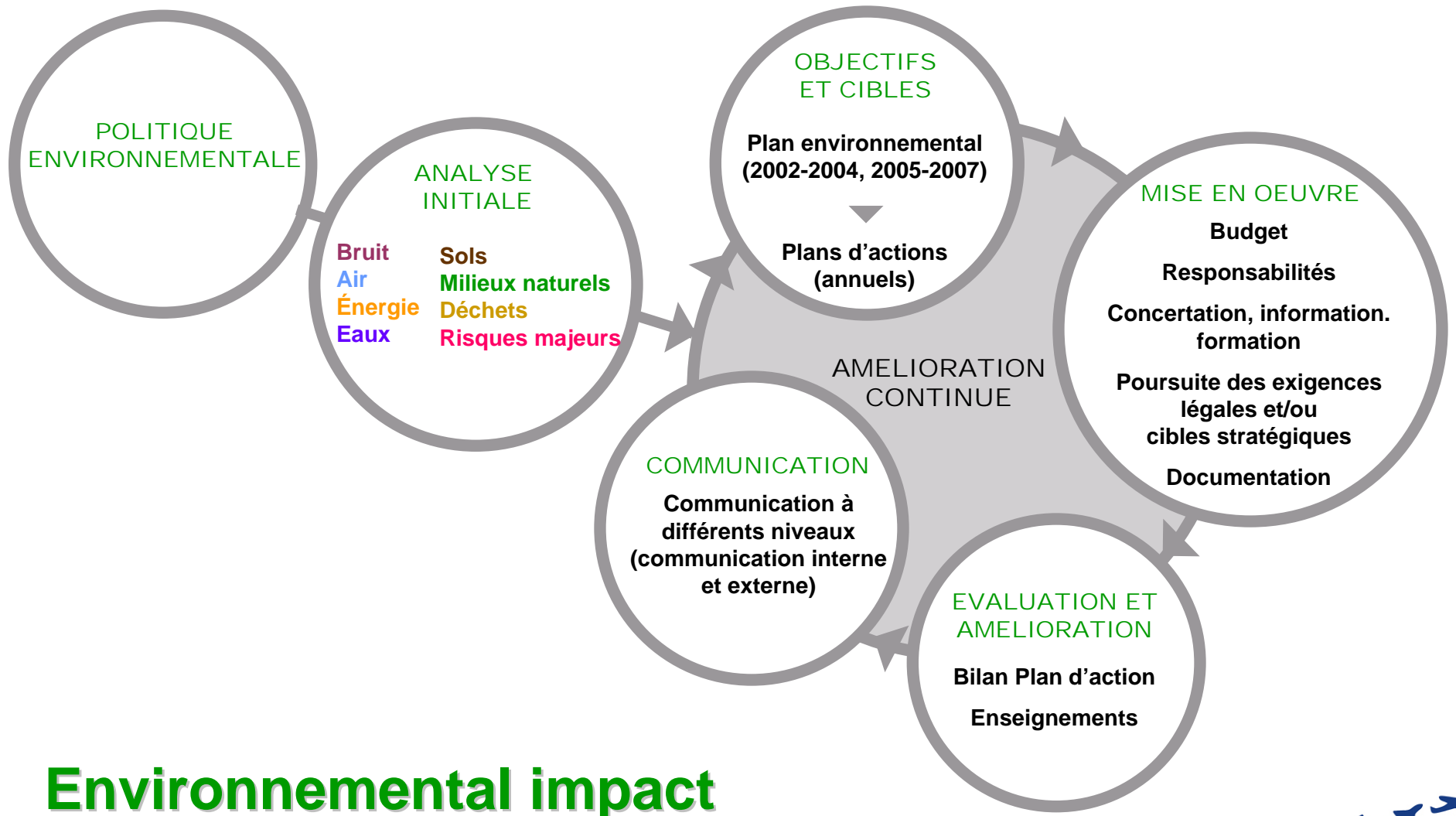
Projet d'aménagement paysager et de plantation

## Coupe longitudinale au point 2 cf plan paysager n°1 simulation TALUS nord



BOURG EN BRESSE LE 25.01.2002 - PL  
Source ONF Isère- bureau d'études forêt-environnement - décembre 2001

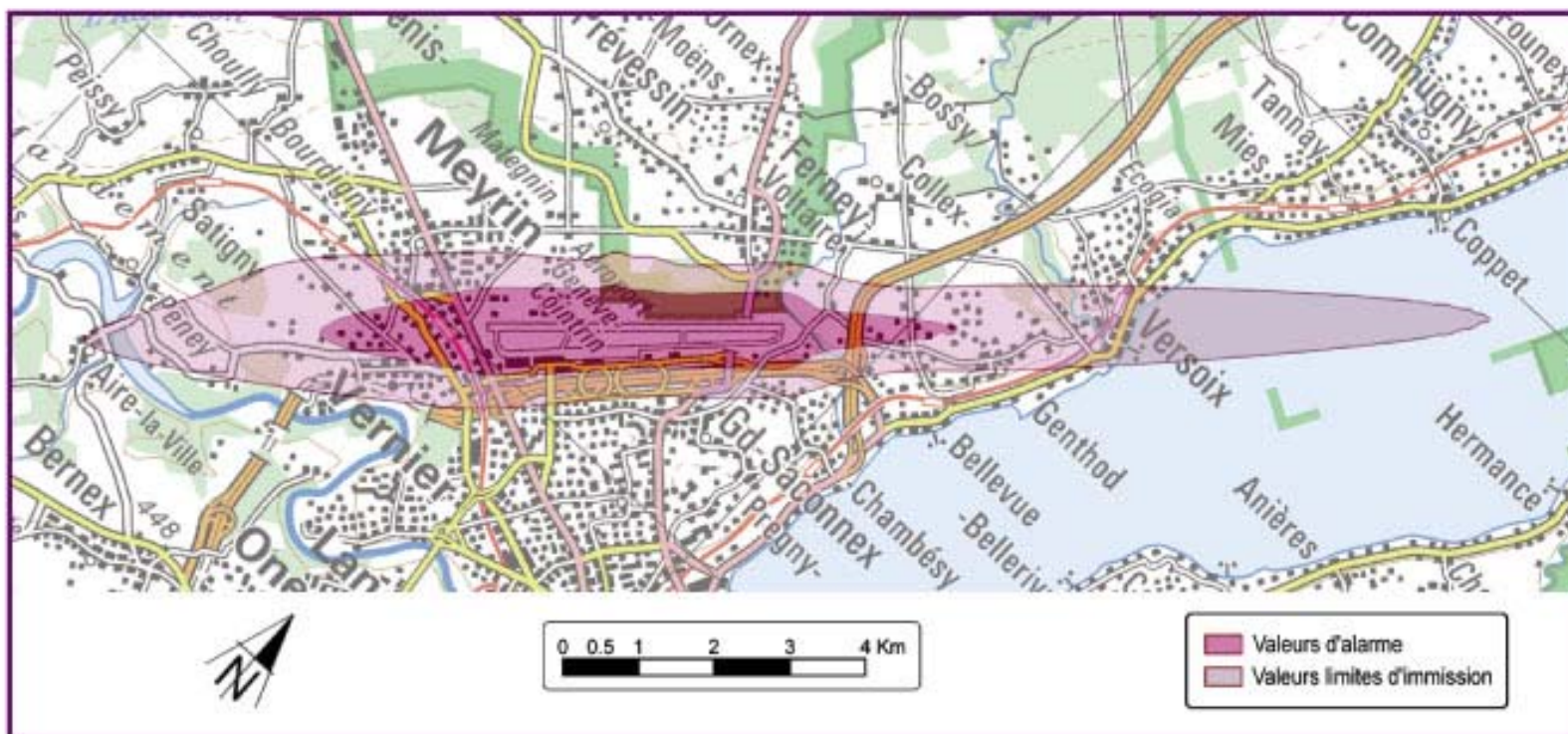
échelle 1 / 500



# Environmental impact

# Noise contours

Courbes d'exposition au bruit (enveloppantes) en vigueur



---

# Approval of new Operating Rules in 2001 (1)

## Espoo Convention

**In force 90 days after registration of instruments of ratification**

**Ratified by Switzerland on 15 Septembre 1996**

**Ratified by France on 15 June 2001  
(signed 26 February 1991)**

## Geneva International Airport

**Public consultation from 10 June to 9 July 2000**

**Decisions dated 31 May 2001**

---

# Approval of new Operatings Rules in 2001 (2)

## Espoo Convention

**Construction of a runway 2'100 long or more  
(Appendix 1, Nr. 7)**

## Geneva International Airport

**No new runway !**

**Approval of new Operating Rules**



---

# Approval of new Operating Rules in 2001 (3)

## Espoo Convention

**Applicable rules under the Convention**

## Geneva International Airport

**French authorities (Prefects and Civil Aviation Authority) fully associated to the procedure**

**Insulation concept also applicable for dwellings on French territory (on a voluntary basis)**