

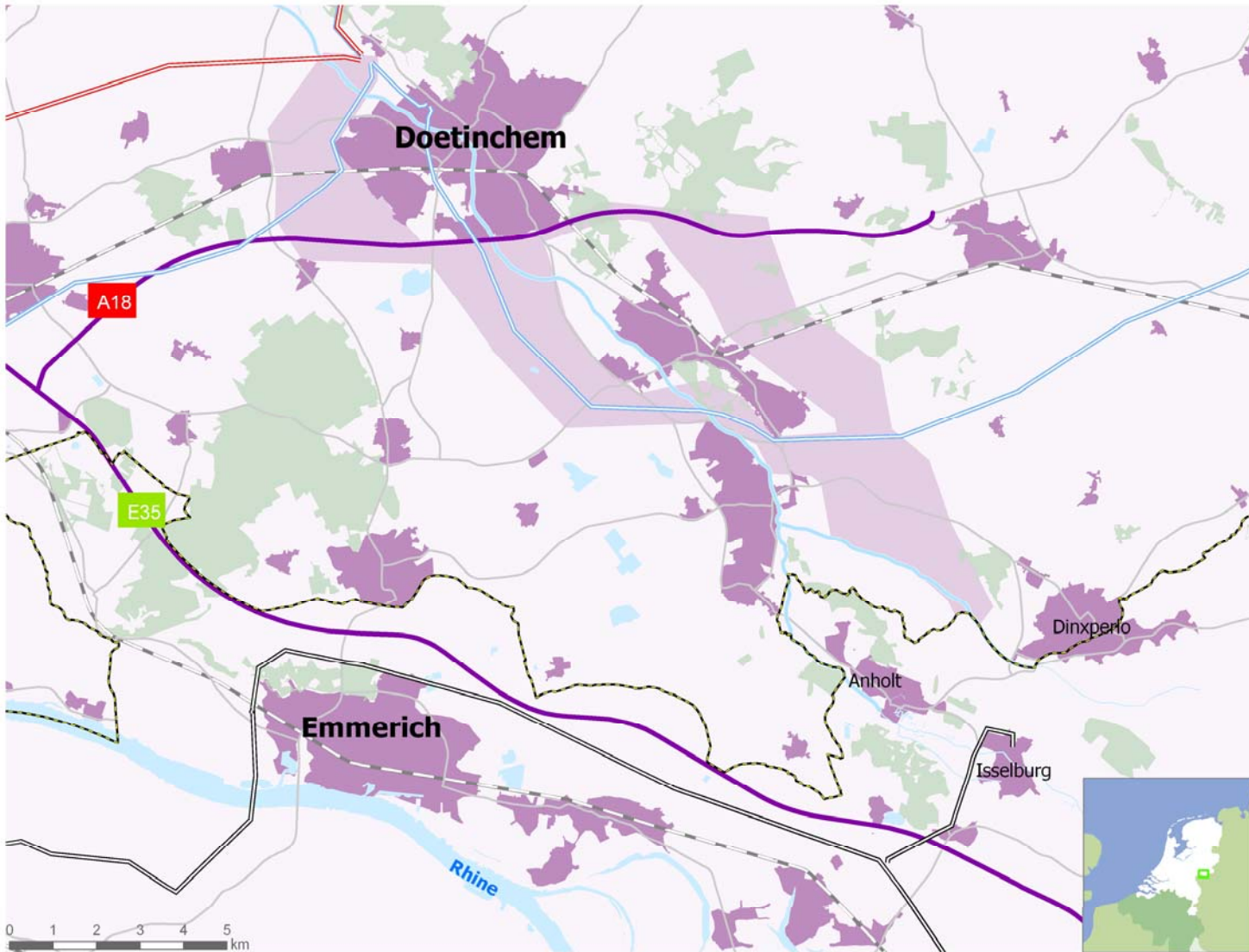
International Environmental Impact Assessment

Case High Power Voltage Line
380 kV Doetinchem – Wesel

380 kV Doetinchem - Wesel

Nature and objectives of the project.

- New overhead high power voltage line between The Netherlands and Germany.
- Offers extra possibilities for exchange of electricity between both countries.
- Creates extra certainty in case of shortage in supply of electricity in one country.
- Line in operation in 2013.



380 kV Doetinchem - Wesel

Central guiding procedure principles.

- Both countries follow own procedures.
- Basis of both procedures is a common agreed corridor with a common border crossing point.
- Regular bilateral co-ordination on basis of agreements on international EIA between The Netherlands and German Länder.

380 kV Doetinchem-Wesel

What is the difference between a national and an international EIA?

- More than one decision making process.
- Need to have a common perception of corridors and environmental effects.
- Continuous co-ordination is a must.
- Publication and participation in two countries instead of one.

380 kV Doetinchem - Wesel

Spatial decisions in The Netherlands.

- The Ministers of Economic Affairs and Infrastructure determine exact route in a state zoning plan.
- For the state zoning plan an Environmental Impact Assessment (EIA) is required.

380 kV Doetinchem - Wesel

Procedure in The Netherlands.

- Note on scope and contents of the EIA.
- Participation and advice.
- Draft of EIA report and zoning plan.
- Official publication of the EIA together with the proposed zoning plan.
- Public participation and advice.
- Definite zoning plan.

380 kV Doetinchem - Wesel

Spatial decisions in Germany.

- District government of Münster firstly establishes on request of network operator a spatial corridor judgment.
- District government of Münster secondly establishes on request of network operator a route decision.
- For both procedures an EIA is required.

380 kV Doetinchem - Wesel

Preliminary activities.

- Prior to official procedures a joint Dutch/German Base Effects Study (BES) has been carried out.
- Six alternative corridors have been examined.
- The corridor prior shown was selected as fit for the procedures in both countries.

380 kV Doetinchem - Wesel

Effects that are investigated:

- Number of dwellings along the line.
- Effects on birds (Natura 2000).
- Effects on landscape.
- Effects on economic functions.
- Effects on soil and water.
- Effects on archeology.

380 kV Doetinchem – Wesel

Progress in procedures.

- Ministers of Economic Affairs and Infrastructure published starting note for EIA in September 2009.
- District government of Münster held “Proposal Conference” in 2009 and published documents for spatial procedure in January 2010.

380 kV Doetinchem - Wesel

- In both procedures comments were raised to re-examine an alternative corridor which had been rejected in the BES.
- The Dutch en German authorities followed the suggestions.
- Result of additional studies confirms that originally selected corridor is superior to proposed alternative corridor.

380 kV Doetinchem - Wesel

- Both countries continue their national procedures for their spatial decisions.
- Each country drafts an Environmental Impact Assessment Report and channels that through the national procedure.
- Continued co-ordination between procedures in both countries.