

Strategic Environmental Assessment in Greece

Angelica Psaila
EIA/SEA Expert - Head of Unit C
Special Environmental Service (SES)
Ministry for the Environment, Energy and
Climate Change

Contents of the Presentation

- SEA in Greece
- Special Remarks

SEA in Greece

- **DIR 2001/42/EC** Assessment of the effects of certain plans and programmes on the environment.

- **JMD 107017/06** SEA for certain plans and programmes. Harmonization with the European Directive 2001/42/EC.

SEA in Greece

Plans and programmes:

including those co-financed by the European Community, as well as modification of them,

- which are subject to the preparation and/or adoption by an public authority at national, regional or local lever or which are prepared by an public authority for adoption, through a legislative procedure by Parliament or Government, and
- which are required by legislative or regulatory provisions and specifically by Laws, Acts of the Ministerial Council, Ministerial Decisions and Acts of the Secretary General of the Regions, and other administrative provisions.

SEA in Greece

SEA for plans and programmes which are likely to have significant environmental effects:

Mandatory SEA:

p & p prepared for agriculture, forestry, fisheries, energy, industry, transport, waste management, water management, telecommunications, tourism, town and country planning or land use and which set the framework for future development consent of projects and activities listed in subcategories 1 and 2 of the EIA legal provisions.

ANNEX I

SEA in Greece

ANNEX I:

- Operational Programmes of the Community Structural Funds and other plans and programmes co-financed by the European Union that concern the sectors of §1 of article 3 (i.e. art.3.2 of the Directive)
- Special Frameworks for Spatial Planning and Sustainable Development (such as those for Renewable Energy, Industry, Tourism, Energy, Transportation, Settlement Networks)
- Regional Frameworks for Spatial Planning and Sustainable Development
- Spatial & Urban Plans (7 types listed)
- Areas of Integrated Development for Tourism
- Aquatic Systems Management Plans
- Regional Solid Waste Management Plans
- National planning for the Management of Hazardous Waste
- Agricultural land (Land reclamation) and Land & Water Resource Plans
- Development programmes for tourist ports

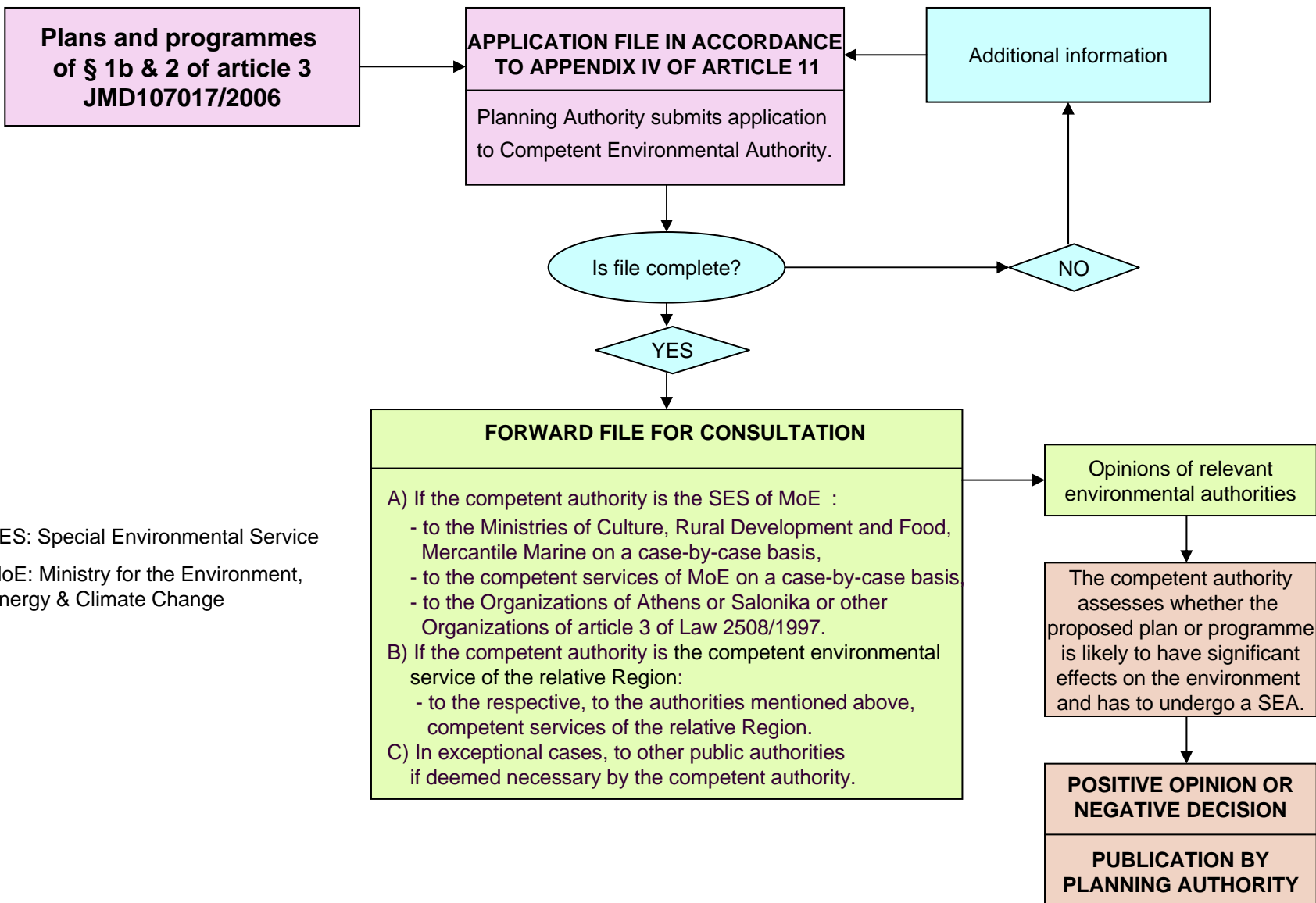
SEA in Greece

SEA for plans and programmes which are likely to have significant environmental effects:

After Environmental Pre- Assessment Procedure (screening):

- Other p & p which are likely to have significant environmental effects on NATURA 2000 sites.
- Minor p & p of the mandatory group and other p & p. (ANNEX II)

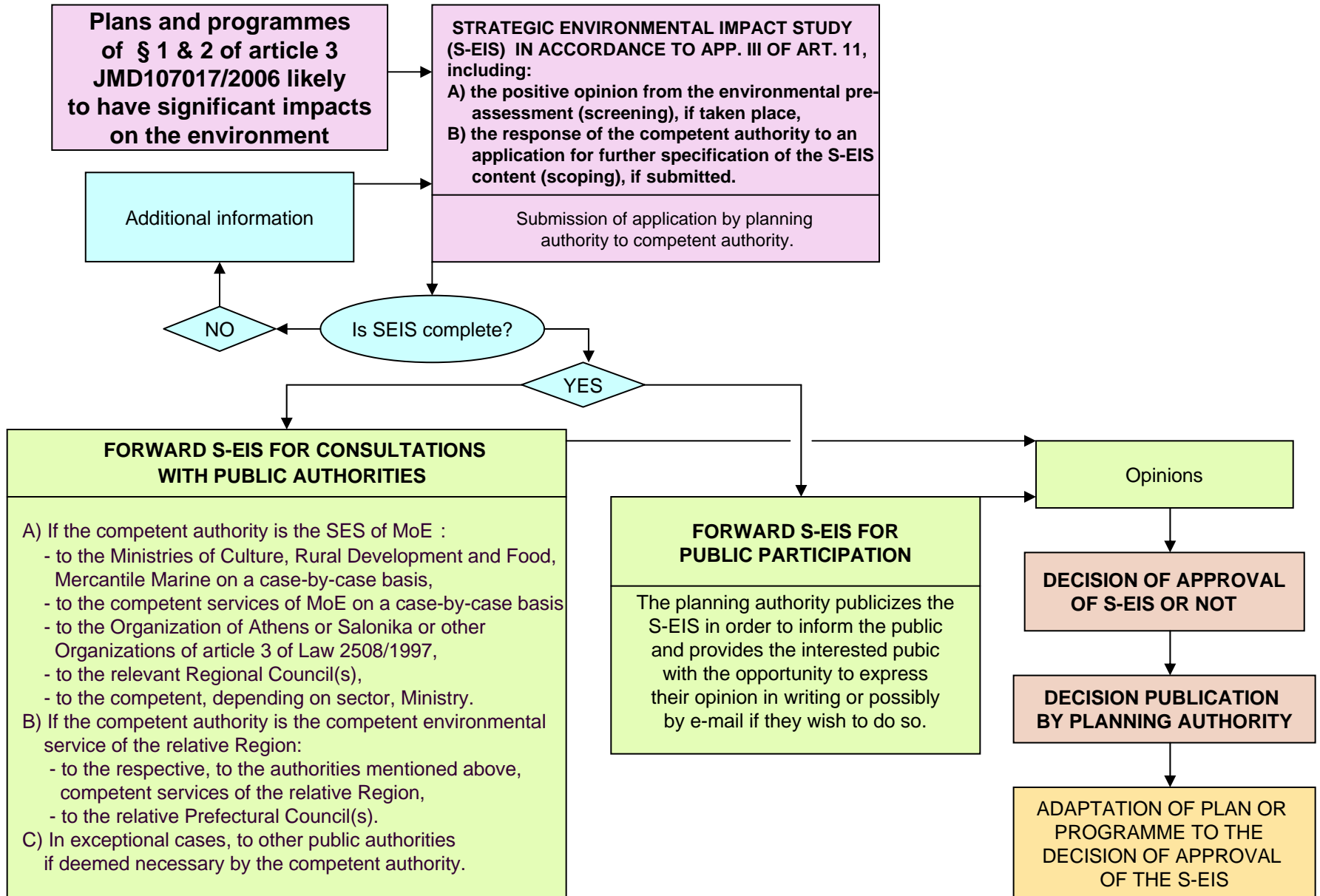
ENVIRONMENTAL PRE-ASSESSMENT PROCEDURE (SCREENING) FOR CERTAIN PLANS AND PROGRAMMES (as specified in JMD107017/2006)



SES: Special Environmental Service

MoE: Ministry for the Environment, Energy & Climate Change

STRATEGIC ENVIRONMENTAL ASSESSMENT (SEA) PROCEDURE



Special Remarks

There are provisions for monitoring by the planning authorities.

There is inter-relation between EIA and SEA procedures.

Changes to the SEA provisions are planned for the near future.