

Environmental Permitting Procedures for projects and activities in Greece

Angelica Psaila
EIA/SEA Expert - Head of Unit C
Special Environmental Service (SES)
Ministry for the Environment, Energy and
Climate Change

Contents of the Presentation

- EIA in Greece – Review
- Current Environmental Permitting Procedures
- Special Remarks
- Potential Changes

EIA in Greece - Review

- **Law 998/79** For forests and forest lands. extractive activities and other projects.
- **Presidential Decree 1180/81** Environmental Impact Assessment for industrial installations and relative activities.
- **Law 1650/86** Main Legal Provision for the Protection of the Environment.
- **JMD 530992/87** Inter alia, EIA for tourist installations according to the Law 1650/86.

EIA in Greece - Review

- **DIR 84/360/EEC** Combating of air pollution from industrial plants.
- **DIR 85/337/EEC** Assessment of the effects of certain public and private projects on the environment.

- **JMD 69269/5387/90** EIA for projects and activities according to the Law 1650/86 and the European Directives
JMD 75308/5512/90 84/360 and 85/337.

- **DIR 97/11/EC** Amendment of the European
DIR 2003/35/EC Directive 85/337/EEC.

Current Environmental Permitting Procedures

- **Law 3010/2002** Harmonization of the Law 1650/86 with the European Directives 97/11/EC and 96/61/EC. New legal provisions for environmental permitting procedures of projects and activities.
- **JMD15393/2332/02** Joint Ministerial Decisions according to the
JMD11014/703/F104/03
JMD 37111/2021/03 Law 3010/2002.
- **JMD 104247/2006** Special Provisions for the
JMD 104248/2006 environmental permitting of the
Law 3851/2010 installations for the electricity production by Renewable Energy Resources.

TABLE 1: CLASSIFICATION OF PROJECTS AND ACTIVITIES INTO GROUPS

1st GROUP	ROAD WORKS	6th GROUP	TOURIST INSTALLATIONS - URBAN PLANNING ACTIVITIES
2nd GROUP	HYDRAULIC WORKS	7th GROUP	LIVESTOCK AND BIRD BREEDING INSTALLATIONS
3rd GROUP	HARBOUR WORKS	8th GROUP	AQUACULTURES
4th GROUP	INFRASTRUCTURE SYSTEMS (Waste-water treatment plants, landfills etc.)	9th GROUP	INDUSTRIAL INSTALLATIONS AND INDUSTRIAL ZONE PLANNING PROJECTS
5th GROUP	EXTRACTIVE AND RELEVANT ACTIVITIES	10th GROUP	SPECIAL PROJECTS AND ACTIVITIES

**DIAGRAM 1:
CLASSIFICATION OF PROJECTS AND ACTIVITIES FOR EACH GROUP
INTO CATEGORIES AND SUBCATEGORIES**

CATEGORY A OF LAW 1650/1986

CATEGORY B OF LAW 1650/1986

1st SUBCATEGORY

2nd SUBCATEGORY

3rd SUBCATEGORY

4th SUBCATEGORY

COMPETENT AUTHORITIES
CENTRAL

COMPETENT AUTHORITIES
REGIONAL

**COMPETENT AUTHORITIES
AND
DOCUMENTATION**

COMPETENT AUTHORITIES
PREFECTURAL

DOCUMENTATION

- a) *PreEIS I*
- b) *EIS I*

DOCUMENTATION

- a) *PreEIS II*
- b) *EIS II*

- a) *PreEIS II /REGIONAL*
- b) *Case-by-case:
EIS II /REGIONAL or
ENV. REP. /PREFECTURAL*

DOCUMENTATION

*ENVIRONMENTAL
REPORT*

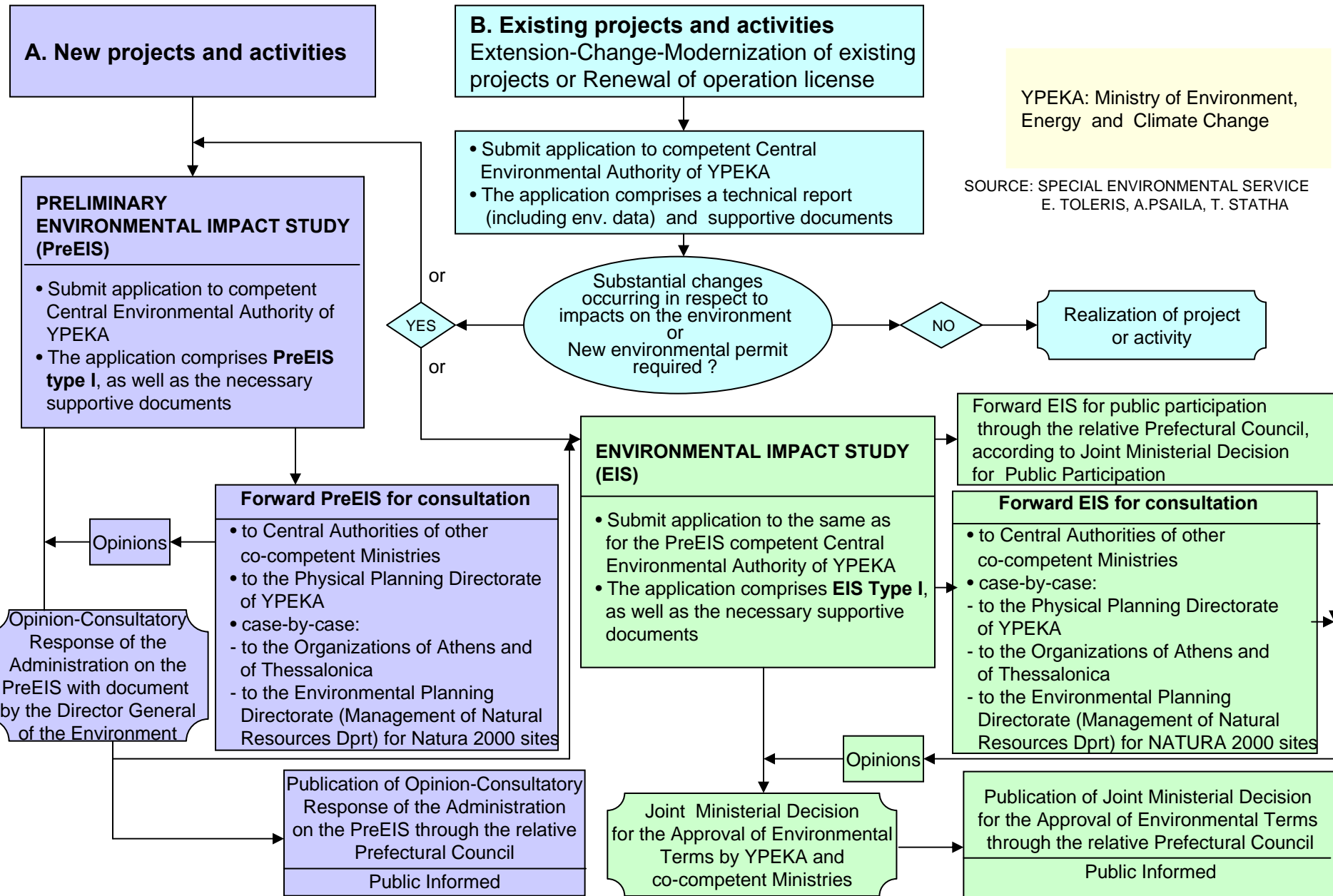
PreEIS: PRELIMINARY ENVIRONMENTAL IMPACT STUDY

EIS: ENVIRONMENTAL IMPACT STUDY

Examples

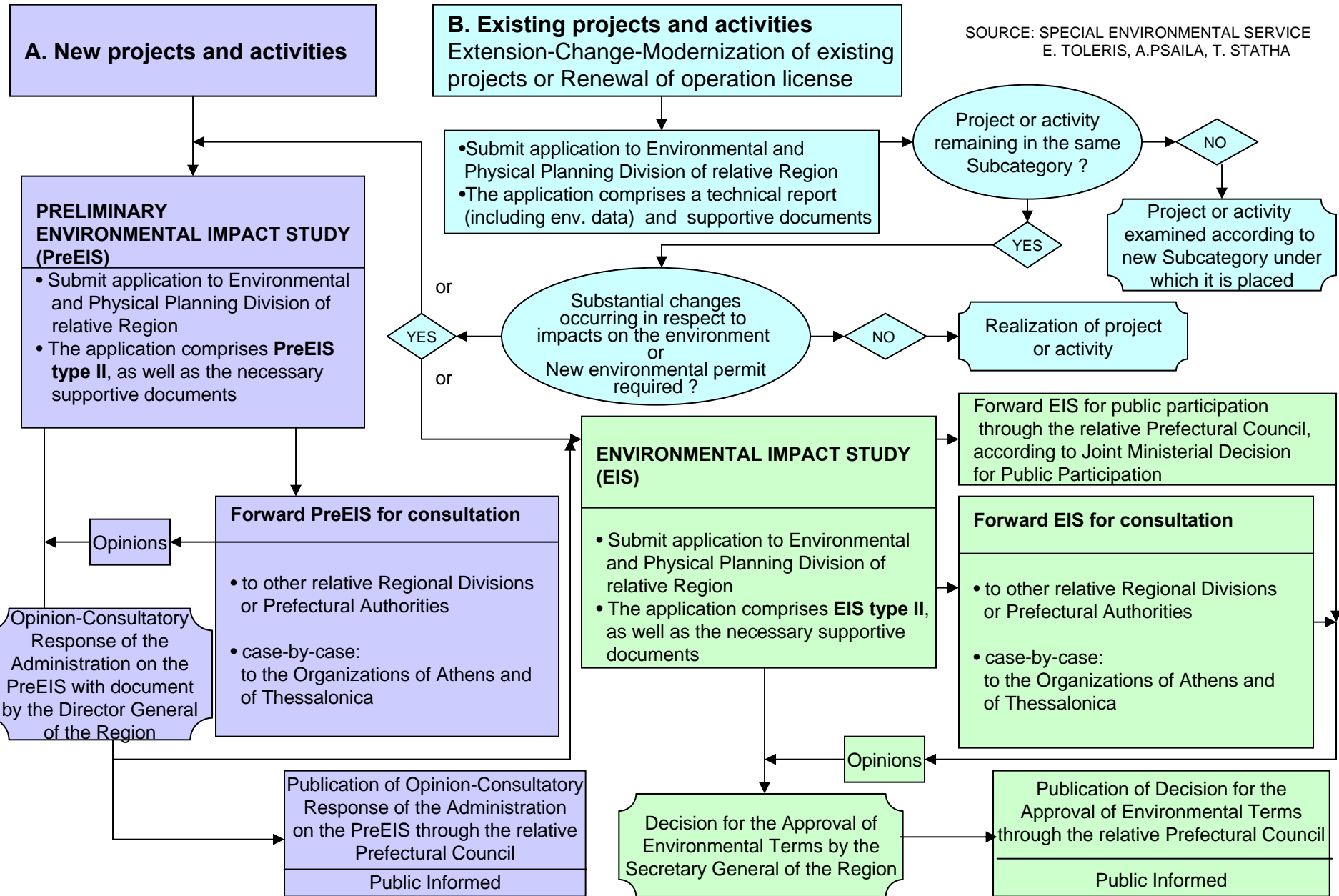
- All the express and national roads belong to the 1st subcategory. All the provincial roads belong to the 2nd subcategory, apart from those which pass through NATURA sites (belong to the 1st subcategory). Rural roads belong to the 3rd subcategory. 1ST GROUP
- Waste water treatment plants for equivalent population more than 100.000 p. belong to the 1st subcategory. Waste water treatment plants for equivalent population less than 100.000 p. belong to the 2nd subcategory, apart from those which the whole or part of them is placed in NATURA sites (belong to the 1st subcategory). 4TH GROUP
- Hotels outside town plans with more than 1000 beds belong to the 1st subcategory. Hotels outside town plans with number of beds between 1000 and 50 belong to the 2nd subcategory, apart from those which the whole or part of them is placed in NATURA sites (belong to the 1st subcategory). Hotels outside town plans with less than 50 beds belong to the 3rd subcategory. 6TH GROUP

**DIAGRAM 2: ENVIRONMENTAL PERMITTING PROCESS FOR
PROJECTS AND ACTIVITIES OF CATEGORY A OF LAW 1650/1986
1st SUBCATEGORY**

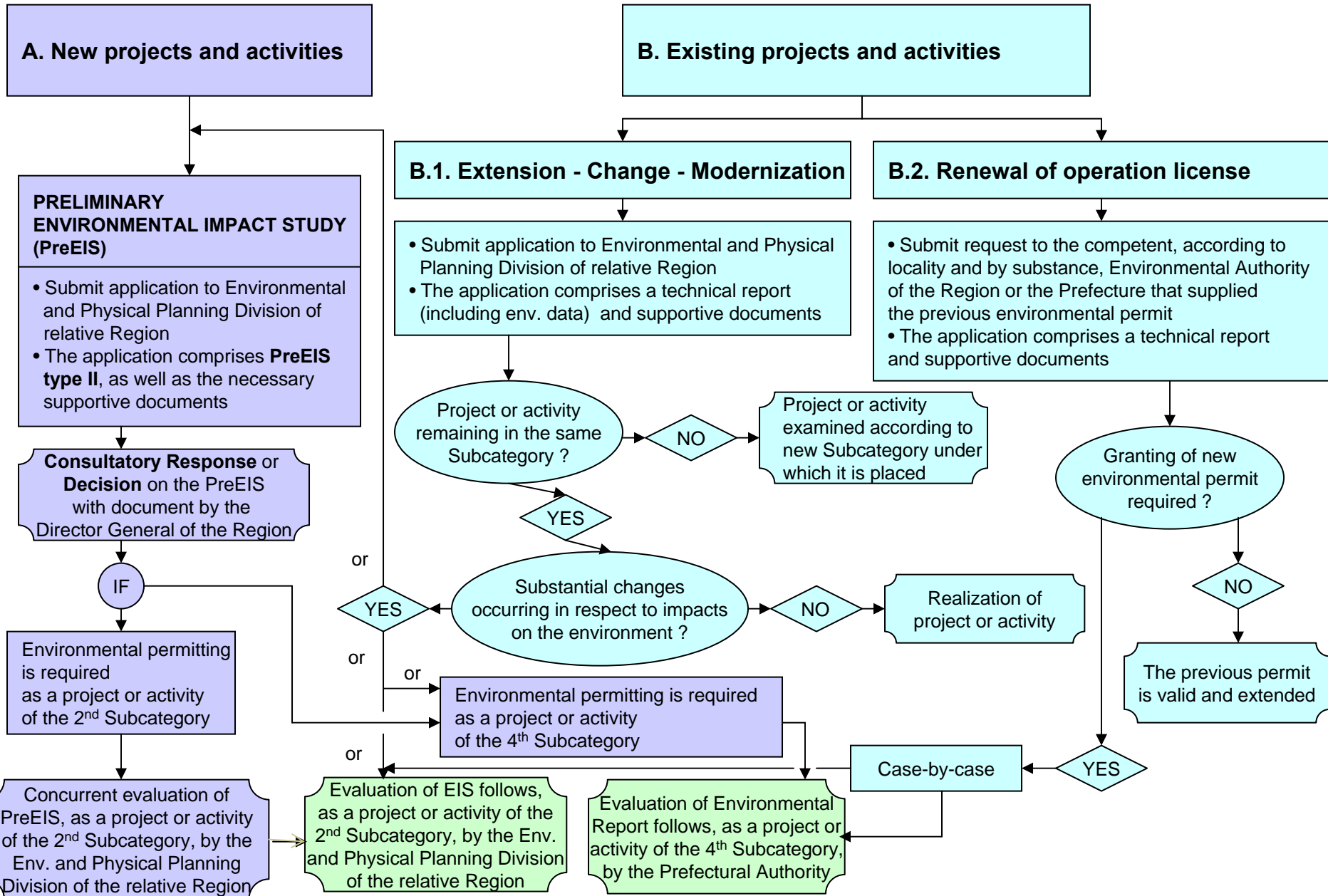


**DIAGRAM 3: ENVIRONMENTAL PERMITTING PROCESS FOR
PROJECTS AND ACTIVITIES OF CATEGORY A OF LAW 1650/1986
2nd SUBCATEGORY**

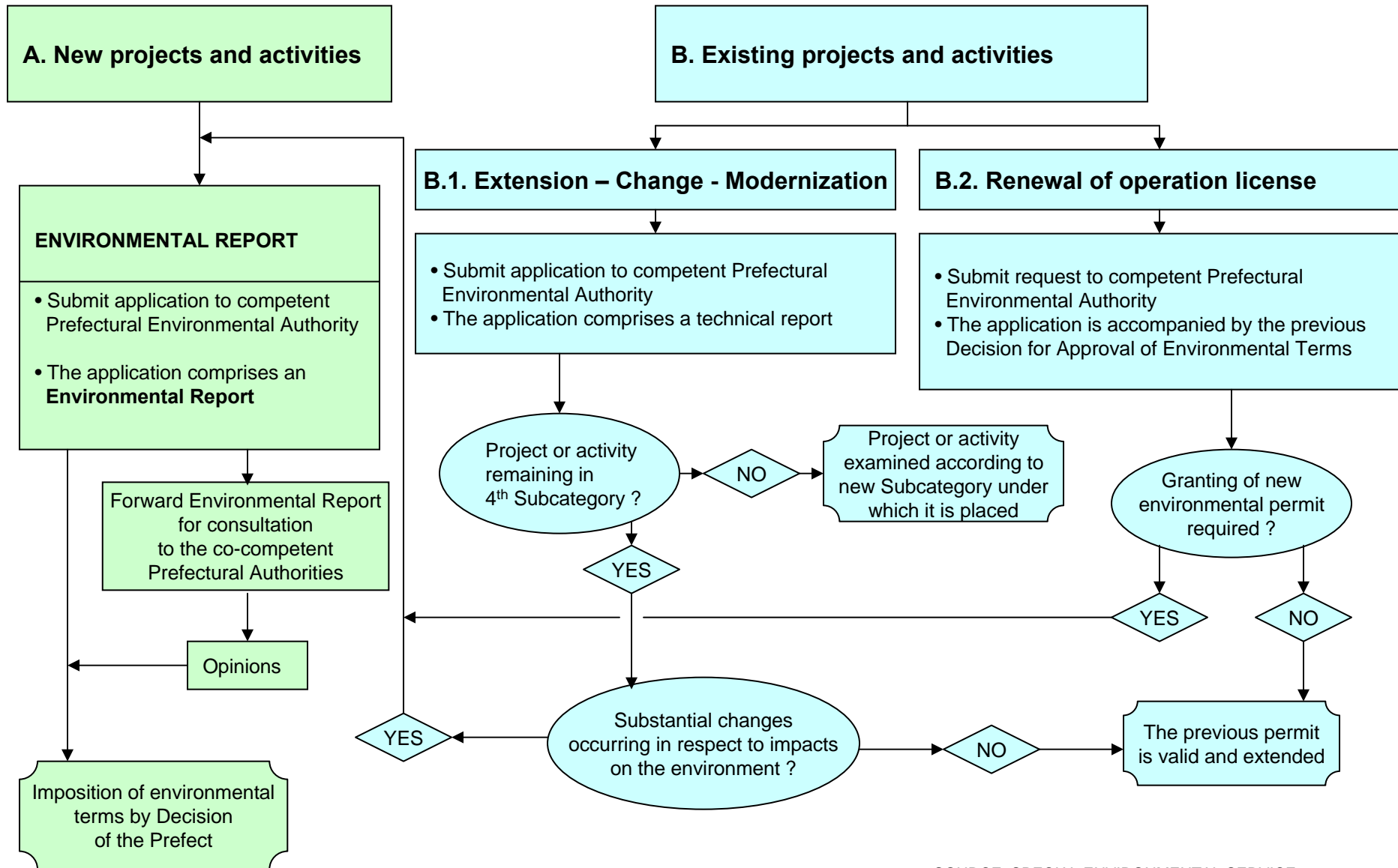
SOURCE: SPECIAL ENVIRONMENTAL SERVICE
E. TOLERIS, A.PSAILA, T. STATHA



**DIAGRAM 4: ENVIRONMENTAL PERMITTING PROCESS FOR
PROJECTS AND ACTIVITIES OF CATEGORY B OF LAW 1650/1986
3rd SUBCATEGORY**



**DIAGRAM 5: ENVIRONMENTAL PERMITTING PROCESS FOR
PROJECTS AND ACTIVITIES OF CATEGORY B OF LAW 1650/1986
4th SUBCATEGORY**



SOURCE: SPECIAL ENVIRONMENTAL SERVICE
E. TOLERIS, A.PSAILA, T. STATHA

Special Remarks

- The requirements of the article 6 of the Eur. Directive 92/43 (Natura Directive) concerning projects and activities are satisfied through the legal system for the environmental permitting of projects and activities.
- The requirements of the the Eur. Directive 96/61 (IPPC Directive) are satisfied through the legal system for the environmental permitting of projects and activities.

Potential Changes

Restructuring under study due to:

1. Maximalistic system

For total population of 11 millions people,

800 EIAs per year for the 1st subcategory

more than 2500 EIAs per year for the 1st and 2nd subcategories

more than 5.000 EIAs per year for all the 4 subcategories.

2. Major reform in the regional and prefectural administrative structure.

From 01.01.2011:

Prefectures (53) are abolished and the majority of their responsibilities are transferred to the 13 new regional administrations.

The competences of the old 13 regions are transferred to the 7 new decentralised administrations.