



Institute of Public
Health of Serbia

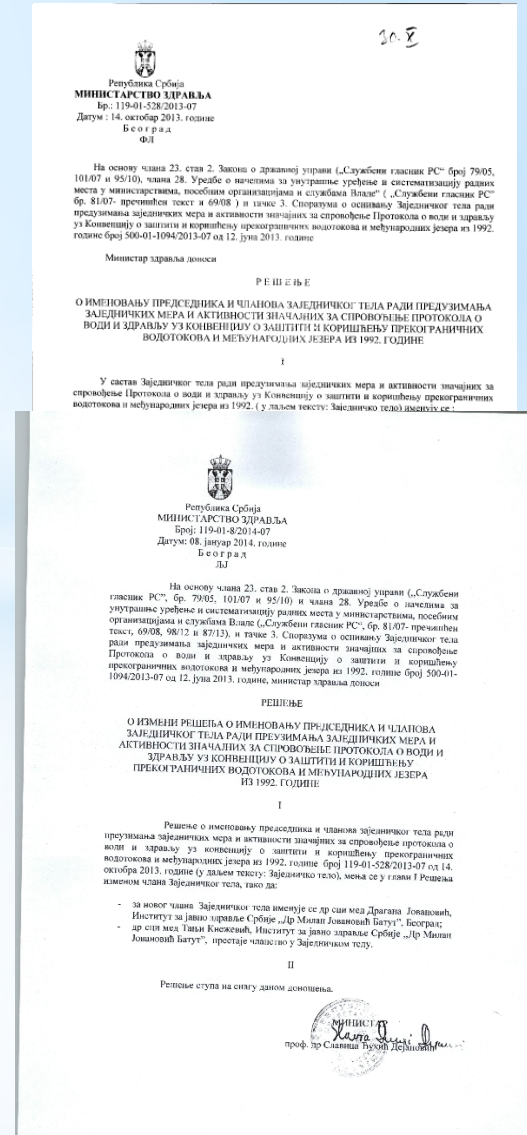
Implementation of the Protocol on Water and Health in the Republic of Serbia: impact and benefits

Dragana Jovanović, MD, PhD, hygiene specialist

*Head of the Department on Drinking and
Bathing water Quality,
Institute of Public Health of Serbia
National focal point for Protocol on water and health*

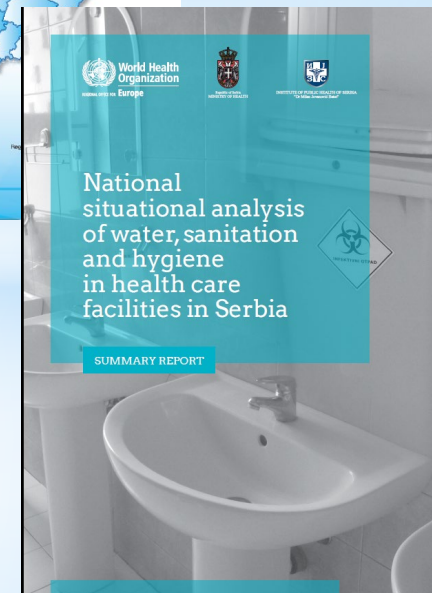
The Protocol on Water and Health as a powerful tool for effective prioritizing and setting national WASH targets in Serbia

- * Serbia ratified the Protocol on water and health in 2013
- * Established effective and functional coordination mechanism – Joint Body for the Protocol implementation
- * Set the National targets and target dates within 2 years (2015) according to the article 6 of the Protocol
- * Implementation of the Protocol in Serbia started with a systematic baseline analysis of the prevailing water, sanitation and health situation in the country
- * Identified challenges and data gaps resulted in specifically targeting the rural water supply, WASH in schools and equitable access to water and sanitation - in line with SDGs (3.3; 3.9; 4a; and 6)



Achievements

- **A national-level systematic survey of drinking water quality and sanitary conditions in small systems of rural areas** – using WHO methodology for rapid assessment (supported by UNECE/WHO and the network of IPHs)
- **District-level situation analysis of WASH situation in rural primary schools** connected to **small water systems** and the **investment needs** for the improvements (MoEP, Italian Government)
- **Self assessment of equitable access to water and sanitation** – UNECE score-card methodology (supported by MoEP and UNECE)
- **A national-level Systematic survey of WASH conditions in health care facilities** (supported by the WHO)



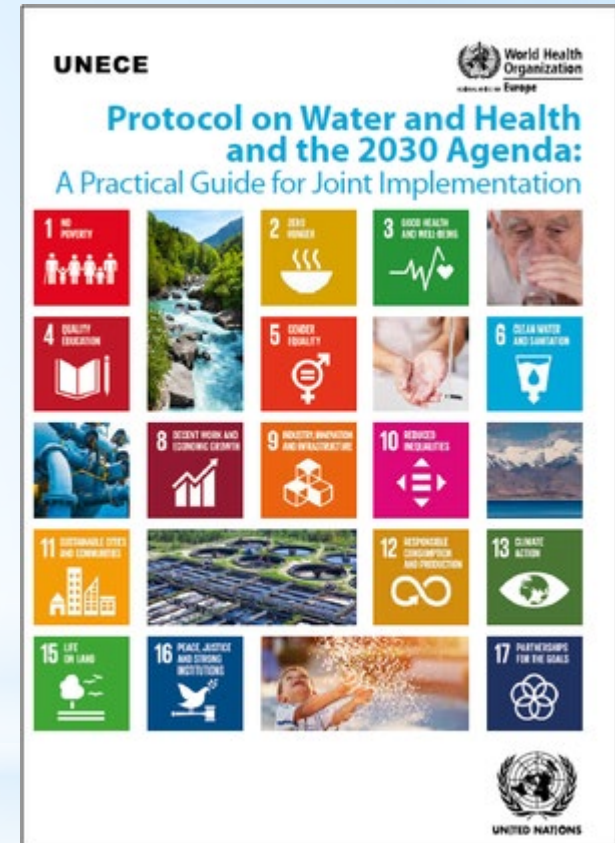
Implementation of the Protocol in Serbia as the driving force for policy actions and measures for the improvement in WASH domain

Implications and impact of conducted activities under the Protocol:

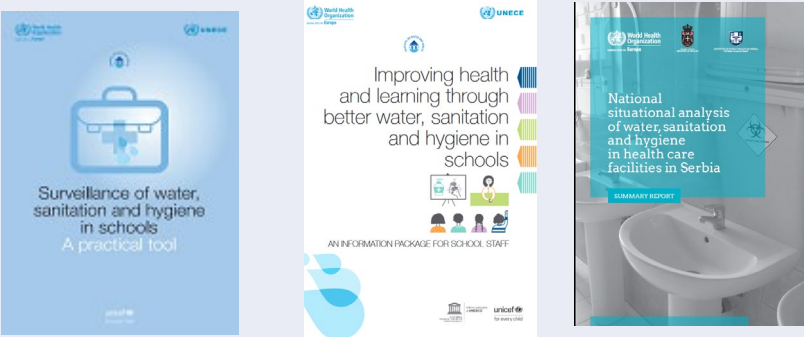
- * **Policy improvement:**
 - Introduction and implementation of **Water Safety Planning (WSP)** approach in the **draft new law** on water intended for human consumption
 - Introduction of **WASH provisions** in the **regulation on the infection control and prevention in healthcare facilities**
 - Development of the **Action plan on equitable access to water and sanitation** (supported by UNECE)
- * **Improvement of national survey methodology** for WASH in schools and healthcare facilities – an uptake of **JMP** indicators for SDG 4a and 3.8
- * **Filling the national evidence base** to inform policy making in water, sanitation and health domains (small systems, WASH in schools, WASH in HCFs. equitable access to water and sanitation);

Benefits of the Protocol implementation in Serbia

- * **Good and efficient intersectoral and multistakeholder collaboration** and networking; better data exchange;
- * **Pro-active role of various institutions at local levels** to undertake measures for the improvement in targeted areas;
- * **Identifying and prioritizing** problematic areas in **national targets**, covering whole water cycle;
- * **Advancing the national evidence base** in water, sanitation and health domains (small systems, WASH in schools, equitable access to water and sanitation);
- * **A tool for achieving** the objectives and priorities of **international commitments** (i.e. Agenda 2030, Health 2020, Ostrava Declaration, Sendai Framework for Disaster Risk Reduction, etc.)
- * **Sharing experience** at national and international level;



Work under the Protocol is relevant for combating COVID-19

| Programme area of the Protocol | Relevance for COVID19 |
|--|--|
| <p>Improving governance for water and health: support for implementing the 2030 Agenda through setting targets and implementing measures</p> | <p>Setting up of specific targets, addressing improvement of WASH in schools and HCFs, equitable access to water and sanitation and safe and efficient management of water supply and sanitation systems, thus becoming COVID19 sensitive targets</p> |
| <p>Institutional WASH</p>  | <p>Defining hygienic measures for safe reopening of schools and their communication to school managers Development of promoting material for hand hygiene in schools Defining of the indicators for self-assessment of WASH conditions in schools during pandemic and setting up monitoring mechanism for tracking the implementation of the anti-epidemic measures in schools Setting up of adequate WASH conditions in temporary COVID19 HCFs</p> |
| <p>Safe and efficient management of water supply and sanitation systems</p> | <p>Introducing water safety planning approach into regulation and preparing for building capacities for its implementation in practice</p> |