

# GLAAS highlights from the pan-European Region

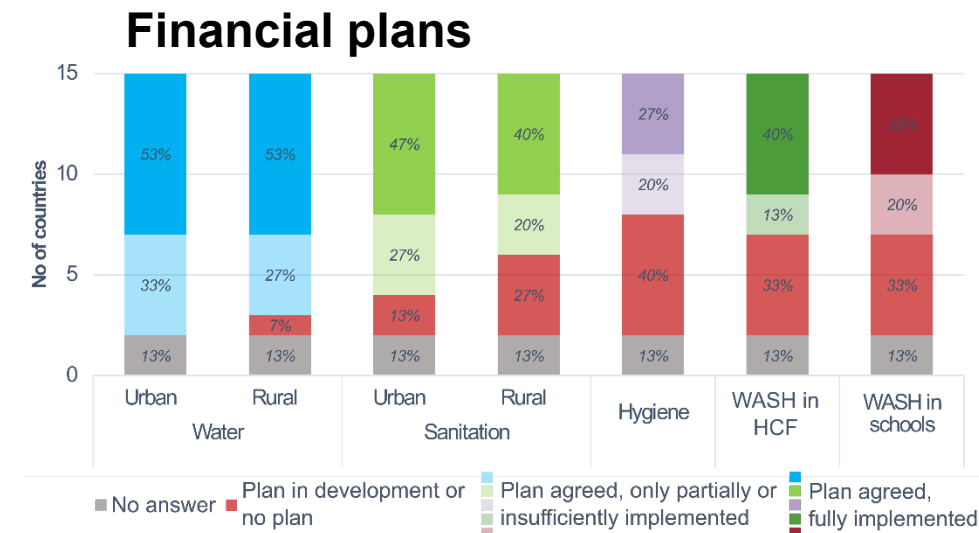
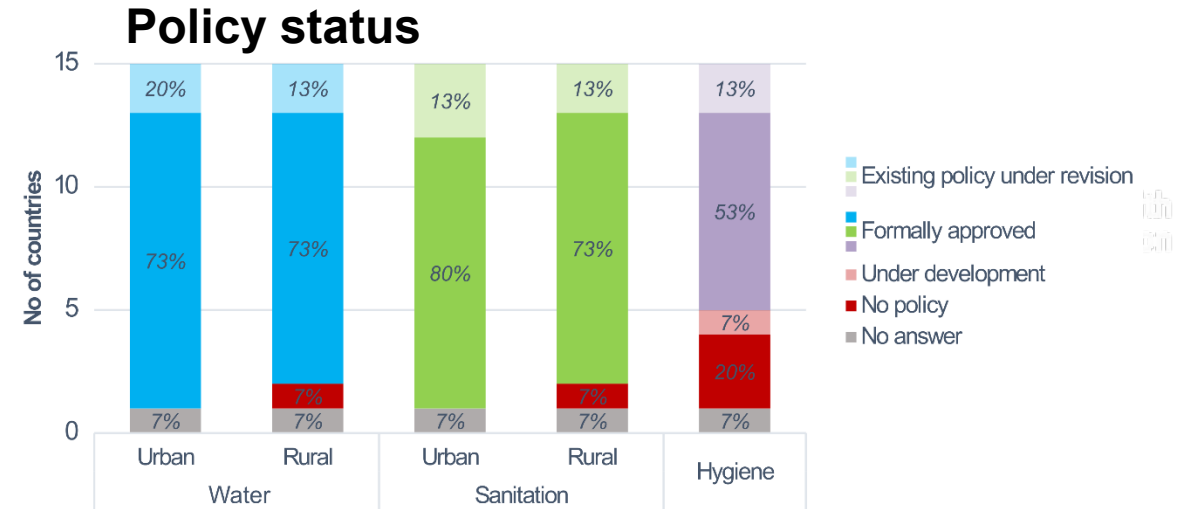
## Task Force on Target Setting and Reporting

3 November 2020

# GLAAS survey 2018-2019

## WASH policies vs. financial implementation

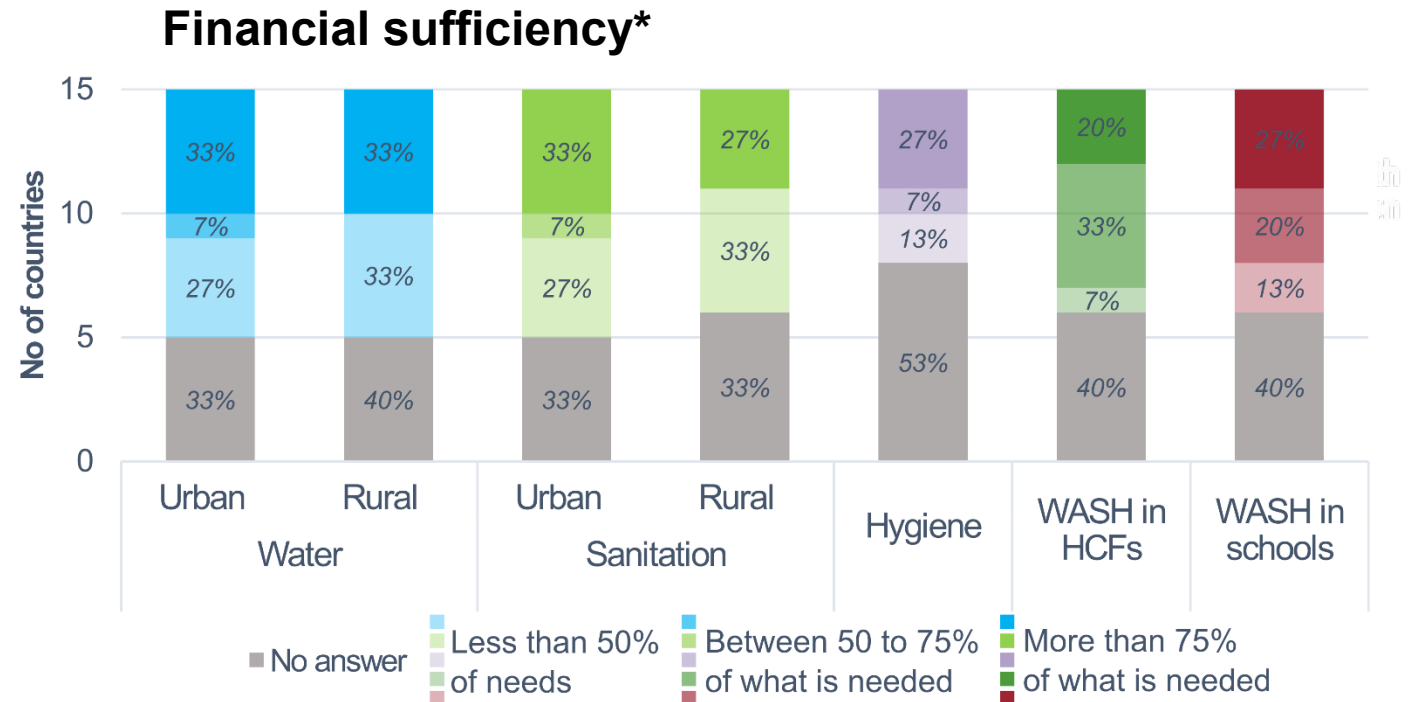
- 15 European countries participated
- Policies are in place in most countries with slightly lower coverage for rural areas
- No policies on hygiene in 1/3 of countries
- Discrepancy between policy aspirations and available financing for implementation
- Only half of countries have agreed financial plans on hygiene, and WASH in schools and HCFs



# GLAAS survey 2018-2019

## More funding needed

- Data gap on sufficiency\* of financing
- Plans are not always costed and supported by sufficient\* fund allocation
- Only 1/3 countries reported sufficient\* financial resources for WASH in communities

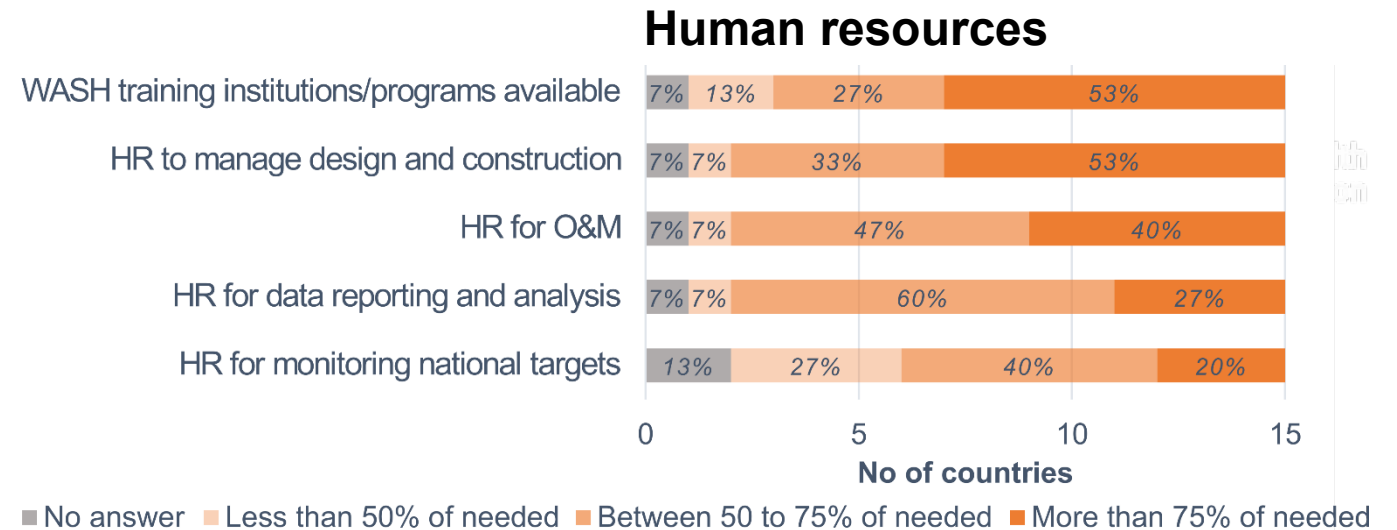


\* “Sufficient” financial resources defined as having available more than 75% of what is needed

# GLAAS survey 2018-2019

## Develop human resources (HR)

- Only 1/5 of countries reported having sufficient HR to monitor national targets
- Less than 1/3 of countries observes sufficient\* HR to manage data – may impact policy decisions and implementation
- More than half of countries report a lack of HR for O&M



\*

“Sufficient” human resources defined as having available more than 75% of what is needed

# GLAAS survey 2018-2019

## Example sanitation: Standards and risk-based mgmt.



- Insufficient testing of effluent quality, in particular for on-site facilities
- In 1/2 countries no or insufficient independent sanitary inspection
- Setting and enforcement of standards requires attention
- Need to scale up application of risk-based management approach

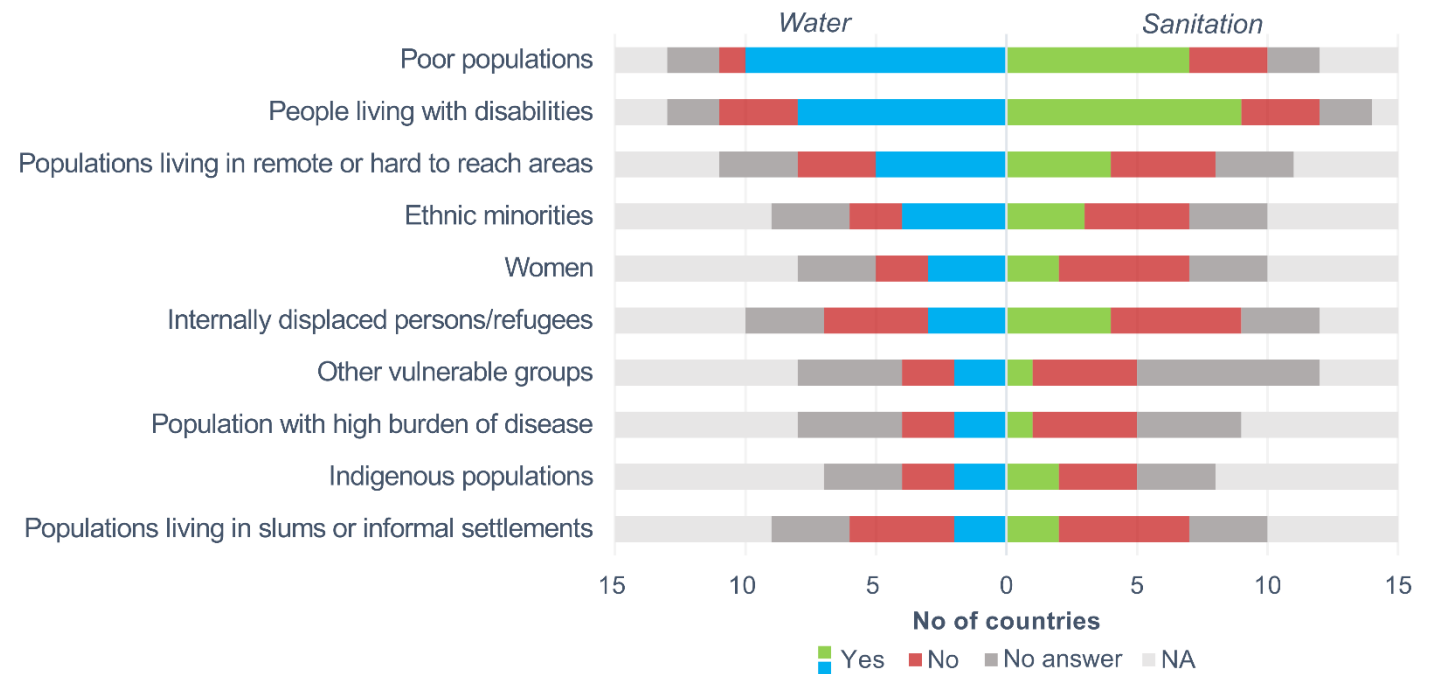
National sanitation and wastewater treatment standard in place	Countries	Proportion (%)
On-site sanitation	9/14	64
Faecal sludge	11/14	79
Wastewater	14/14	100
Safe re-use	4/14	29
<b>Uptake of risk-based management approach (sanitation safety plan, SSP)</b>		
Formal uptake of SSP	2/14	14
Under development	3/14	21
No SSP or anticipated	9/14	64

# GLAAS survey 2018-2019

## Leaving no one behind: make it a reality

- Majority of countries reported approved national WASH policies, but measures are lacking to extend services to vulnerable groups
- For some vulnerable groups (i.e. the poor and people living with disabilities), more than half of the countries have equity measures in place
- Enforcement is constrained by insufficient resources to reduce inequities

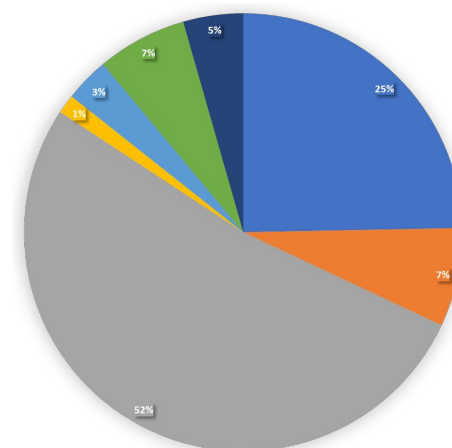
### Equity measures



# Tracking WASH financing: Case study: TrackFin in Kyrgyzstan

- GLAAS indicated major data gap on financing
- To improve understanding of current expenditures and incomes in the WASH sector, a working group:
  - Mapped stakeholders
  - Tracked financial flows and fixed assets stock
  - Developed WASH accounts report
- The working group recommended to:
  - Further develop WASH financial tracking mechanism based on TrackFin experience
  - Improve WASH funding informed by WASH account data

SECTOR FINANCING SOURCES	DATA AVAILABILITY
Tariffs for networks services (service providers)	Green
Tariffs provided by non-network service providers	Yellow
Household expenses for self-supply (hygiene)	Yellow
Household expenses for self-supply (water & sanitation)	Red
National Government transfers	Green
International government transfers	Yellow
Voluntary contributions and transfers (NGOs)	Red
Refundable financing (loans)	Green



## WASH funding sources

- Domestic tariffs for services provided
- External tariffs for services provided
- Expenditure of household users for self service
- Expenditure of non household users for self service
- International transfer
- International public transfers
- Preferential repayable funding

# Make use of GLAAS

- Improve enforcement of national WASH policies and targets by developing HR and allocating sufficient funds
- Strengthen country capacities for:
  - Assessing HR needs and developing tailored HR plans
  - Tracking WASH financial flows to inform costing and fund allocations
  - Targeting actions and resources on hygiene and WASH in institutions
- Make GLAAS a continuous and integral part of national WASH sector analysis to identify gaps, inform policy decisions and priority interventions
- Use the GLAAS methodology to undertake baseline analysis and set targets under the Protocol
- Disseminate data to improve stakeholder coordination and advocate partners for increased investment in the WASH sector





**Stay  
healthy  
and  
safe**

