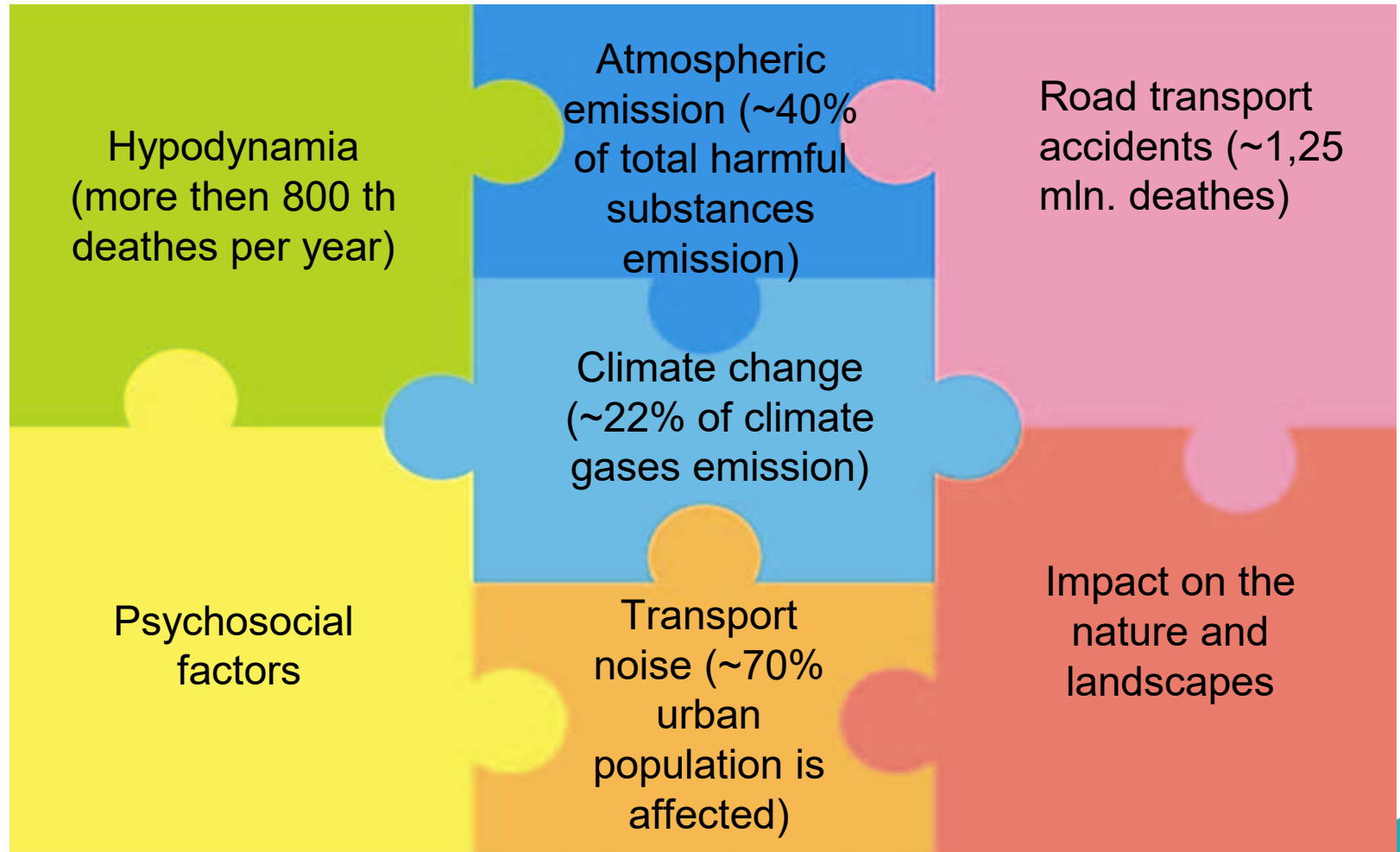


## Transport, Health and Environment Pan-European Programme (THE PEP)

*Dr. Vadim Donchenko, Vice-Chair of Steering Committee Bureau*



## Negative impact of transport on the environment and health



# MAIN PRINCIPLES OF TRANSPORT SUSTAINABILITY ENSURING

- **AVOID** – reduce transport demand by introduction of urban and transport coordinated planning policies (“new urbanizm”, ensuring of “proximity”), creation of infrastructure which gives a priority to PT and active mobility
- **SHIFT** – introduction of instruments which from one side restrict the use of private vehicles and from other promote the use of PT and active mobility, implementation of innovative information and transport technologies
- **IMPROVE** – improvement of environmental performances of vehicles and fuels

# WHY DO WE NEED ENVIRONMENT AND HEALTH SECTORS TO TAKE ON BOARD TO ENSURE OF TRANSPORT SUSTAINABILITY?

- Transport Ministries are responsible for development and realization of **transport policy** the main goal of which is “to ensure effective satisfaction of transport needs of economy and society”
- In many cases environmental and health criteria aren't included in decision-making processes in transport sector



- There is a need to:
  - ❖ ensure (at legislative level!) obligatory use of instruments of environmental appraisal of urban and transport planning projects
  - ❖ implement environmental and health requirements in in decision-making processes in transport sector



**WE NEED SOME “PRESSURE” ON TRANSPORT POLICY FORMULATION**

In many cases implementation of environmental and health criteria in transport decision-making process may lead to improvement of efficiency of transport systems` functioning and conversely



i.e. we have win-win situation (e.g. implementation of environmental payments for transport enterprisers leads to improvement of environmental performances of transport fleet, improvement of logistic and so on)

# FROM A HIGH-QUALITY URBAN SPACE FOR CARS



# TO A HIGH-QUALITY URBAN SPACE FOR HUMANS

