



EUROPEAN UNION WATER INITIATIVE PLUS FOR THE EASTERN PARTNERSHIP

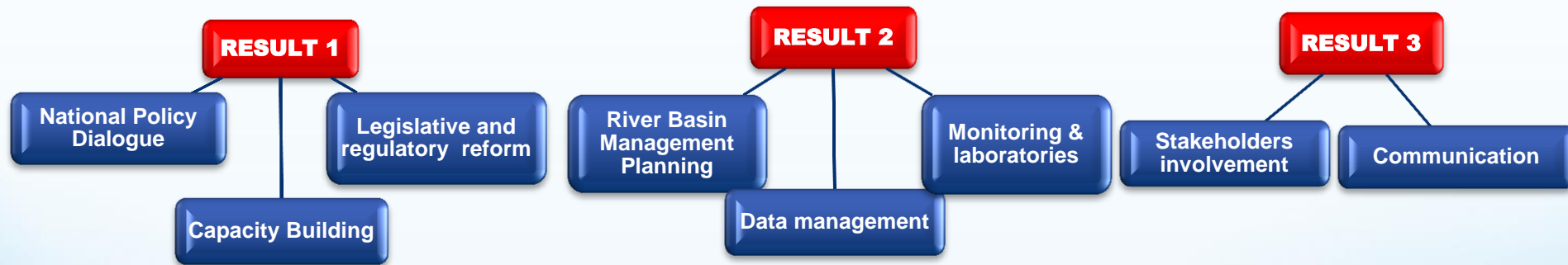
NATIONAL POLICY DIALOGUE
3rd MEETING OF THE COORDINATION COMMITTEE

11 APRIL 2017, CHIȘINĂU



Project Overview

- ❖ Overall project aim, to support the six EaP countries to approximate to EU water *acquis*



- ❖ Project structure and administration
 - National Policy Dialogue (and its Working Groups)
 - National Executive Strategic Board
 - Regional Project Steering Committee
 - Local Representatives



Progress



- ❖ Inception Phase (ongoing)
 - gathering of background information (Sep–Oct 2016)
 - kick off (as part of NPD meeting on 17 November 2016)
 - follow-up discussions and meetings with partners to clarify potential priorities (Nov 2016 – Feb 2017)
 - drafting and discussing national workplan for 4 years (Feb–April 2017)
 - presenting national workplans at regional Steering Committee in Brussels (15–16 May 2017)

- ❖ Objective of this session and this presentation is to present the overall vision of the workplan



- Facilitation of the National Policy Dialogue
- Harmonization of water legislation with EU water acquis and the AA
- Support to development of a mid-term Action Plan (for 2019-2023) for the national Water Supply and Sanitation Strategy
- Enhancing economic regulatory system for the water sector
- Enhancing the use of economic instruments for WRM and a study on establishing a dedicated Water Fund
- Implementation of MEAs, primarily the Water Convention and its Protocol on Water and Health
- Further support to transboundary cooperation and capacity development

Assistance in fulfilling country's obligations in accordance with the Association Agreement with the European Union

- ❖ **Aim::** Implementation of the relevant provisions of the EU Association Agreement (WFD, but also Floods Directive, Urban Waste Water Directive, Drinking Water Directive and Nitrates Directive).
- ❖ **Limitations:** the scope of work will be formulated after further discussions with the MoEnv and taking into account ongoing assistance projects, including the ADA-SDC project on strengthening institutional frameworks
- ❖ **Mode of work:** combination of local and international legal expertise; round table discussions, relying on existing working groups

Support to development of a mid-term Action Plan for (2019-2023) for the national Water Supply and Sanitation Strategy

- ❖ **Approach:** based on the methodology used for mid-term planning in 2010; integration of (i) new policy objectives established in the WSS Strategy, and (ii) new international commitments (AA, SDGs, Paris Pact)
- ❖ **Limitations:** Key elements need to be agreed before including them into the Action Plan. For new elements, some preliminary analysis might be required.
- ❖ **Mode of work:** coordination with other water project led by development partners; combination of local and international expertise; establishing a dedicated Working group under the NPD process

Enhancing economic regulatory system for the water sector

Finalisation of the on-going studies led by the OECD; plus any additional work they may trigger (e.g. assistance in implementing the recommendations on ERS)

Enhancing the use of economic instruments for WRM and a study on establishing a dedicated Water Fund

- ❖ **Scope:** (i) Recommendations on improving the use of priority economic instruments for water management (selected jointly with the MoENV; and (ii) a study on establishing a dedicated budgetary Water Fund
- ❖ **Approach:** based on well-elaborated OECD methodology and past work on economic instruments for water management and on state support mechanisms in several EECCA countries
- ❖ **Mode of work:** combination of local and international expertise; through the NPD, consultations with key stakeholders (MoEnv, MoEconomy, MoFinance, MoAgriculture, Parliament, key water user groups etc.)

Methodological support in establishing national indicators under SDG 6

- ❖ **Approach:** Provide methodological support on establishing indicators, data collection, monitoring and reporting under targets established under SDG 6
- ❖ **Mode of work:** rely on global experience and developments, coordinate closely with ongoing work by national agencies and UNDP on defining national SDG agenda.

Support in implementation of selected measures from the National Programme to implement national targets under the Protocol on Water and Health 2016-2025

- ❖ **Approach:** Only selected non-investment measures could be considered
- ❖ **Mode of work:** rely on existing cooperation between water and health authorities and coordinate closely with the ongoing ADA- SDC project.

Support to implementation of the Dniester Treaty

- ❖ **Approach:** Organization of bilateral exchanges with Ukraine and planning of joint activities.
- ❖ **Mode of work:** Rely on results of ENVSEC project and coordinate with GEF project

- ❖ **EU Member States experience and know-how transfer to support WFD compliant water sector management in Moldova**
- ❖ **Transition from Technical Assistance to process ownership and leadership: Key objective of developing institutional sustainability in Moldova**

Based on Moldovan country priorities

- ❖ **Review and promotion of the River Basin Management Plans (RBMPs) for the Danube-Prut and the Black Sea River Basin District (RBD)**
- ❖ **Support for WFD compliant GW and SW monitoring program in Danube-Prut and Black Sea RBD**
- ❖ **Support to laboratories analysis: quality management, training and equipment**

- ❖ **Methodological support for the establishment of Water Information System (WIS) for Moldova**
- ❖ **Support development of Prut umbrella plan (with UA and RO) in line with ICPDR practices (e.g. joint field survey / transboundary coordination)**
- ❖ **Assist to create a dashboard to monitor the implementation of the programme of measures (PoM) and methodological support on key actions related to EU water directives implementation (FD, UWWWD, NO₃D, Habitat Directive)**
- ❖ **Close co-operation with SDC and ADA.**

- ❖ **Assessment of 1) existing GW and SW monitoring situation and current strategies and 2) Laboratories.**
 - Needs identification of equipment, infrastructure and training.
- ❖ **Strengthen WFD compliant water monitoring and water analyses by:**
 - Development of tailored monitoring strategies and nationally applicable guidance.
 - Purchase / upgrade equipment, infrastructure, consumables.
 - Hands-on training on **1)** sampling and monitoring of all WFD indicators (quantity, chemistry, biology); **2)** analyses of further substances, new/upgraded equipment and quality management.
 - Biological and chemical field surveys in SW and GW to support RBMP development/implementation.
 - Assist towards enlarging the accreditation scope.

RESULT 2

PLANNING: RBM PLAN DEVELOPMENT



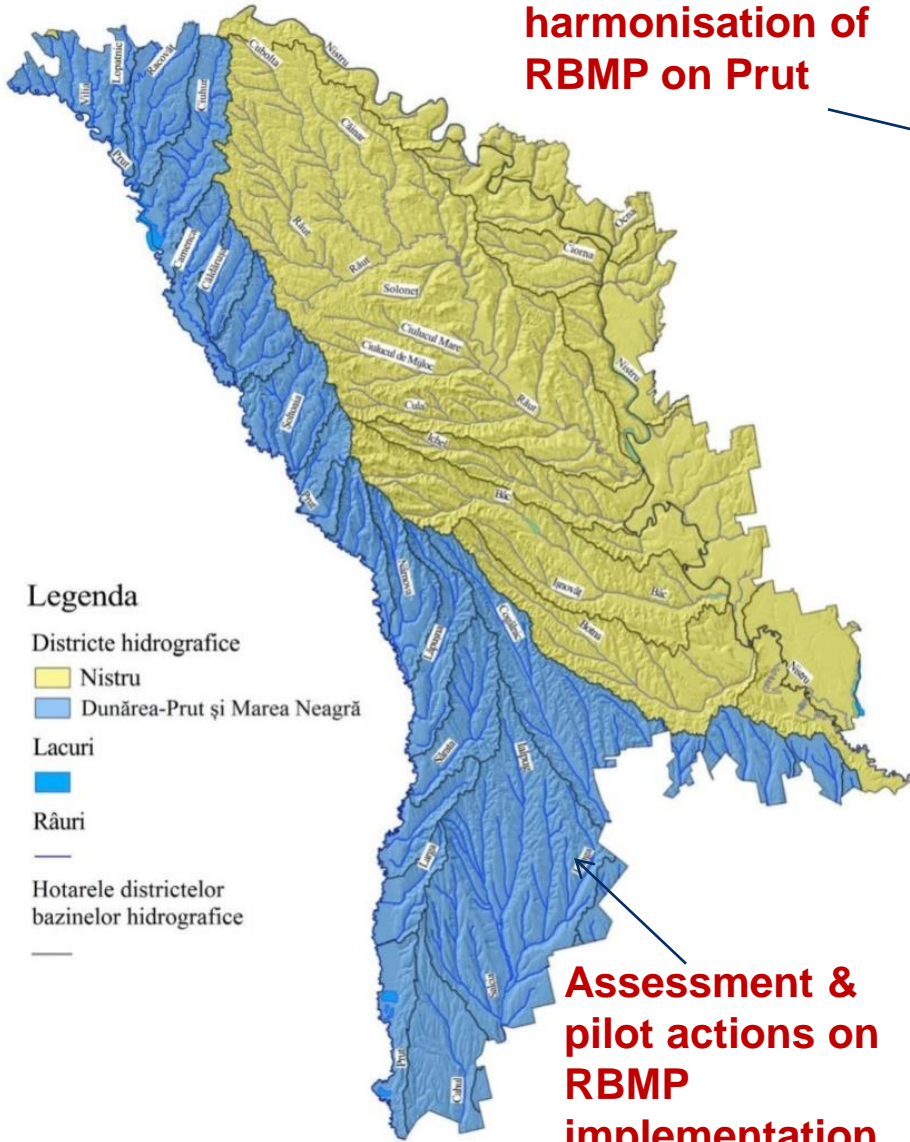
- ❖ **Support to the promotion of River Basin Management plan(s) to be adopted and fine tuning based on WFD requirements**
 - **Assessment** of the current status for WFD implementation
 - **Fine tuning of first interim RBMP based on WFD requirements**
 - Development of **national methodological guidelines** and capacity building for further appropriation of the know how on RBMP development by responsible institutions

- ❖ **Support coordination in transboundary river basins**
 - Assessment of the work done on Danube-Prut RBM Plan harmonisation
 - Support for further harmonisation including the identification of international main issues to facilitate shared vision and water bodies delineation on the Prut main river course for collaborative monitoring.
 - Strengthening the existing cross-boundary working groups
 - Support River Prut umbrella plan development with Romania and Ukraine
 - Organise exchange of practice with other European transboundary basins and better connect MD experts to ICPDR and CIS working groups

- ❖ **Establishment of a system for regular monitoring of the implementation of the action program of the existing RBMPs**
 - Introduction of the use of programme of measures implementation indicators to be linked to the basin governance;
 - study the possibility to use SDGs for providing additional information on the impact of the action program beyond the Water Res. monitoring;
 - development of dashboard with partner institutions for an interim report about the implementation of the programme of measures;
 - Assess the adapted type of measures to be monitored in the dashboard
- ❖ **Pilot test on action implementation on the Danube-Prut and the Black Sea River Basin District in synergy with other projects**
 - The selection of the pilot demonstration action to be implemented will be subject to a consultation process.
 - Methodological support and possible development with local support based on the 1M€ budget. Synergies will be sought with other projects.

River Basin Districts for the Republic of Moldova

**transboundary
harmonisation of
RBMP on Prut**



Legenda

Districte hidrografice

Nistru

Dunărea-Prut și Marea Neagră

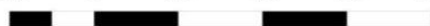
Lacuri

Râuri

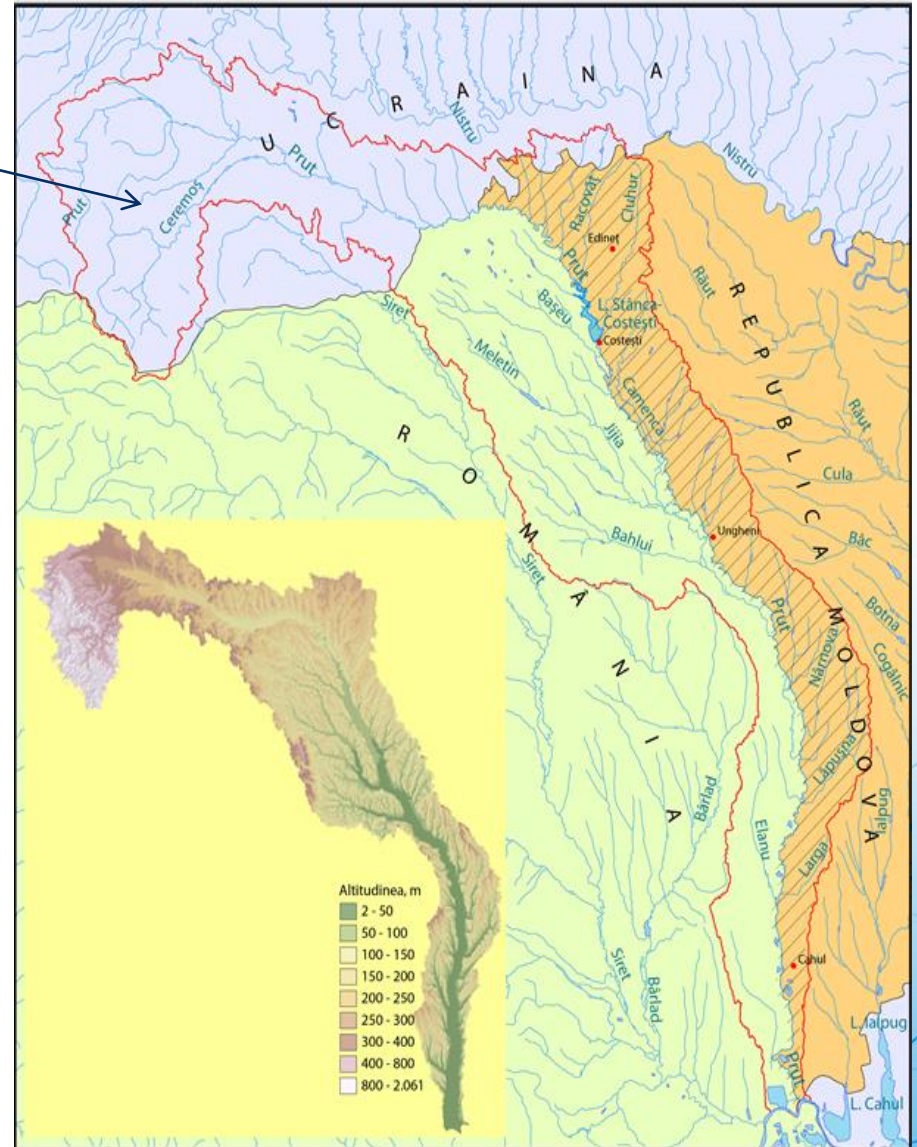
Hotarele districtelor
bazinelor hidrografice

Hotarele districtelor
bazinelor hidrografice

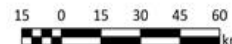
25 0 25 50 75 100 km



**Assessment &
pilot actions on
RBMP
implementation**



Scala
15 0 15 30 45 60
km



Zona de studiu

România
Ucraina
Bazinul Prutului
Republica Moldova

- ❖ **To improve the data/information management, it is proposed to work hand in hand with the SDC/ADA project in order to :**
- **Support organisational aspects for an efficient water data management** (law updating about role/ responsibilities of Water cadastre/SIRA , data management policy development, agreements for data exchanges, support to metadata production, on-line server management organisation, etc.)
 - **Support the water cadastre development** (configuration server, implementation catalogue of metadata, demo of automatized data exchanges, etc.)
 - **Support information production following needs** (RBMP, Flood plans, etc.)

❖ Strengthen stakeholder involvement mechanisms at different scales

- Assess the existing stakeholder involvement mechanism at the different scales (national, basin/district, transboundary basin)
- Develop or strengthen the mechanisms for stakeholder and water users participation in the development and implementation process of the RBMPs at national scale in connection with the NPD
- Methodological and technical support to River Basin Councils
- Organization and facilitation of meetings with stakeholders to building consensus on shared objectives of RBMPs and Programme of Measures
- Stakeholder involvement actions and users involvement on thematic issues in priority areas
- Organisation of international events to harmonise practices and share information and communication on WFD implementation, IWRM and MEAs

❖ **Development, regular update and implementation of a communication strategy for RBM Planning and for the project visibility**

- Development, updating and implementation of a Communication strategy
- Preparation and publishing Information material (Leaflets on the national components (in English and Moldovan), Action brochures, Be-annual project Newsletter, Press releases, media articles, social media, etc.)
- Implementation of communication activities for targeted stakeholders (communication campaigns, school information sessions, etc.)

TRANSBOUNDARY ASPECTS

- Support to River Prut ICPDR working group and establishment of a River Prut umbrella plan with Romania and Ukraine
- Development of harmonised monitoring programme for the River Prut and joint field survey
- Support to implementation of the Dniester River Treaty by organising bilateral exchanges and joint planning of activities (in cooperation with GEF project)



Thank you for your attention!

Open for comments and questions

Please feel free to contact the EUWI+ team:

OECD: Matthew.GRIFFITHS@oecd.org and Alexandre.MARTOUSSEVITCH@oecd.org

UNECE: Peep.Mardiste@unece.org and Alisher.Mamadzhanov@unece.org

UBA/Austria: Michael.Sutter@umweltbundesamt.at and
andreas.scheidleder@umweltbundesamt.at

IOWater, France: p.henry-de-villeneuve@oieau.fr and y.videnina@oieau.fr

