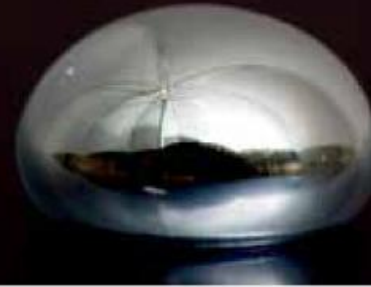




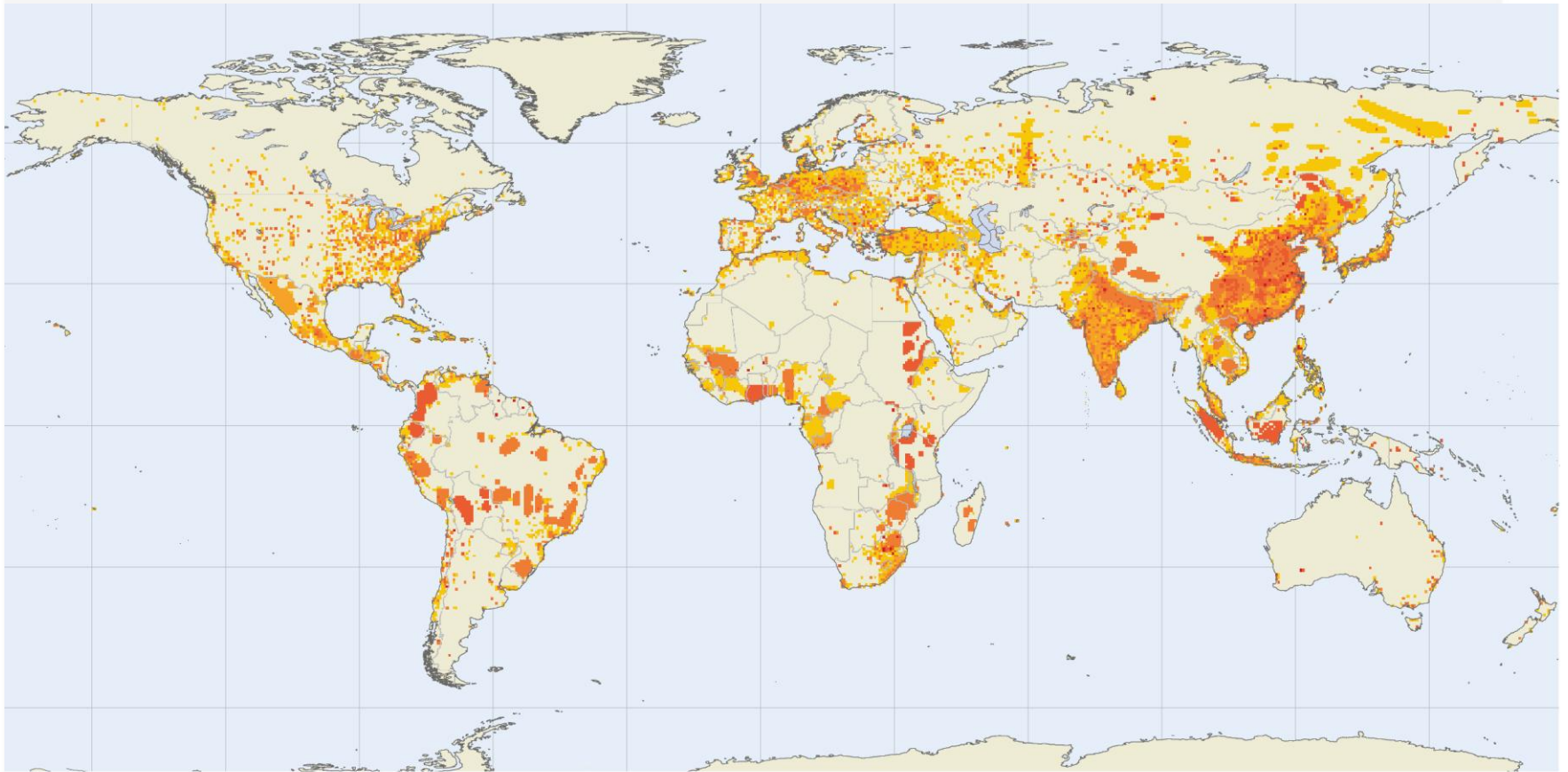
MINAMATA
CONVENTION
ON MERCURY



Minamata Convention – activities relevant to LRTAP

**Chemicals and Wastes Branch
activities on mercury monitoring**

Global distribution of mercury emissions



Mercury emission 2010, g/km²



MINAMATA
CONVENTION
ON MERCURY

Controls on mercury emissions in the Minamata Convention

- Article 5 – Manufacturing processes in which mercury or mercury compounds are used
- Article 7 – Artisanal and small-scale gold mining
- Article 8 - Emissions
- Article 10 – Environmentally sound interim storage of mercury, other than waste mercury
- Article 11 – Mercury wastes



Reporting, monitoring and evaluation

- Article 8 – Emissions - Requirement to undertake an inventory of relevant sources and report on progress in reducing emissions
- Article 9 – releases - Requirement to undertake an inventory of relevant sources and report on progress in reducing releases
- Article 21 – reporting – requirement for Parties to report in format and timing to be agreed by COP
- Article 22 – Effectiveness evaluation – track effectiveness of the Convention



Monitoring and effectiveness evaluation

- COP1 to initiate establishment of arrangements for comparable monitoring data on presence and movement of mercury in environment and trends in levels of mercury
- First evaluation of effectiveness no more than 6 years after entry into force
- Evaluation will cover data on mercury levels as well as information on technical and financial support provided under the Convention



INC7 mandate for intersessional work

- To support the COP in establishing arrangements for effectiveness, INC7 requested intersessional work by secretariat, in consultation with Governments, regional and subregional monitoring programmes and partnerships, WHO institutions, academia, industry, civil societies and others.



INC7 mandate for intersessional work

- These activities are to:
 - compile information on existing monitoring programmes
 - To develop a draft road map to develop an outline of types of data and create a draft framework for a global monitoring approach as well as to develop a draft strategy for incorporating reports and other monitoring information
 - To draft a report with recommendations on the establishment of arrangements for providing comparable monitoring data



Activities undertaken by secretariat

- Call for submissions to government and stakeholders in relation to monitoring data
 - Deadline now extended to 30 October 2016
- Consultation and discussions with Fate and Transport area of Global Mercury Partnership, including specific discussion with AMAP
- Planned participation in upcoming meetings on monitoring
- Secretariat plans to compile submitted information and circulate draft documents to stakeholders for comment.



Interactions with other organizations

- Input from all relevant groups on ongoing monitoring work and availability of information welcome
 - Secretariat may also access online reports to compile for presentation to the COP
- All stakeholders welcome to provide input when documents are circulated for comment.
 - Circulation expected by late 2016



Other activities of Chemicals and Wastes Branch

- Global Mercury Partnership – Fate and Transport Partnership Area
- GEF project on Global Monitoring of Mercury implemented by UNEP – to provide information on monitoring network by end 2017
- Global Mercury Assessment – mandated by the Governing Council to be provided no later than 2019 (planned for 2018)





MINAMATA
CONVENTION
ON MERCURY



Thank you for your attention