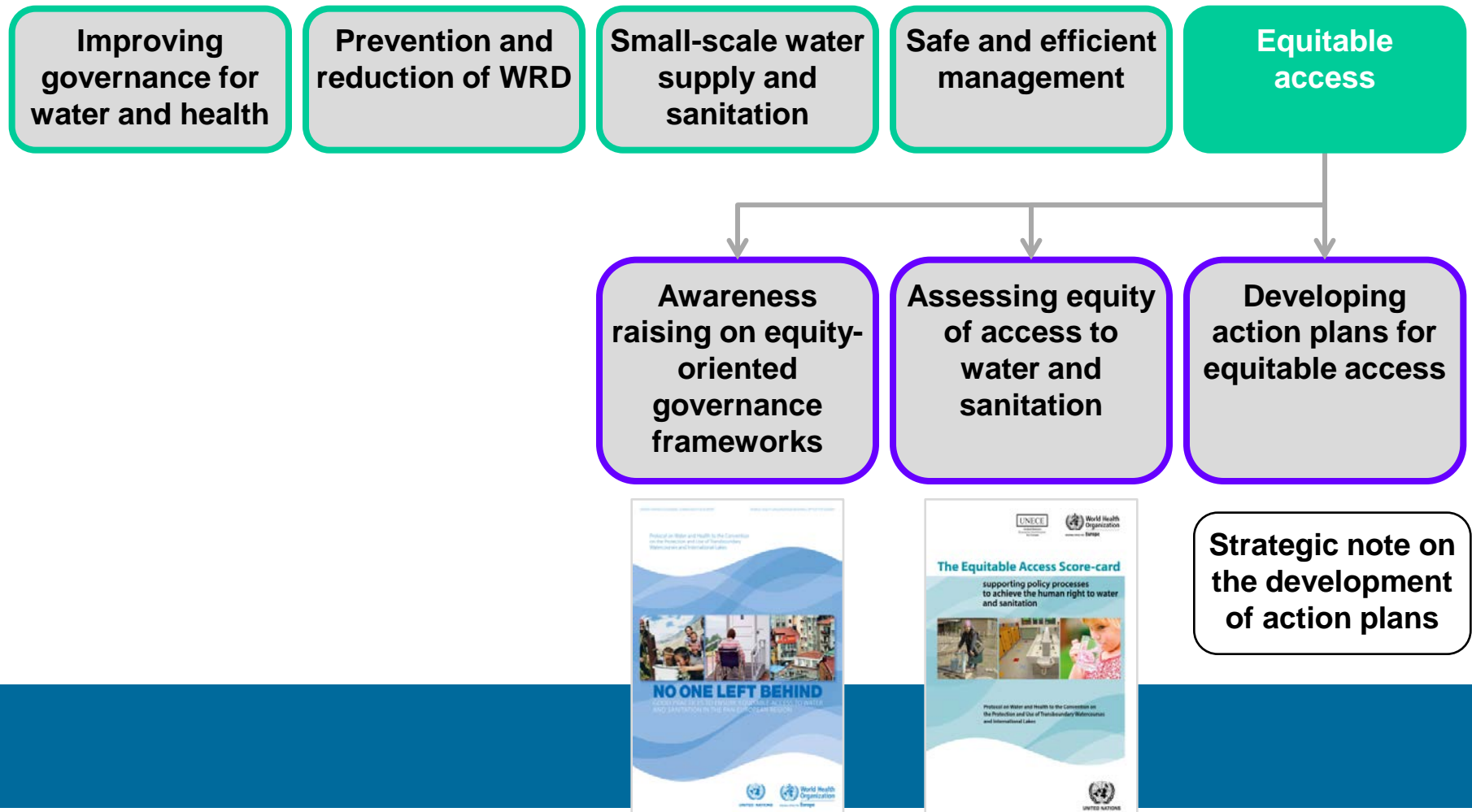


Linking the equitable access self-assessment exercise with the target setting process under the Protocol

Nataliya Nikiforova
UNECE Secretariat



Equitable access in the 2014-2016 programme of work



Possible synergies between equitable access assessment and target setting



Equitable access self-assessment exercise

→ To establish a clear baseline analysis of the situation of equitable access to water and sanitation (especially challenges related to geographical disparities, affordability issues and access for vulnerable groups)

Development of an action plans to address identified gaps

→ Set specific target(s) under the Protocol on Water and Health to progressively improve equitable access

Some targets set in other countries to improve equitable access



Country	Target
Republic of Moldova	Provide access of the population to improved water supply sources for 68% (2015) / 80% (2020) of the total population and for 35% (2015) / 45% (2020) of the rural population
Belarus	Increase level of access to the centralized water supply to 98% for the population of regional and district centers, cities of regional subordination and urban settlements and 83.5% in agro-towns
Kyrgyzstan	Provide by 2017 access for at least 40% of the population to improved sewerage facilities and sanitation, especially in Balykchy and Karakol and new buildings in Bishkek
Republic of Moldova	Increase the access of children to improved water supply sources in 95% (2015) / 100% (2020) of schools and preschool institutions
Ukraine	Improved sanitation and connection of pre-school and secondary schools to sanitation systems in cities and towns 15% (2015) / 25% (2020) and in villages 5% (2015) / 15% (2020)
Tajikistan	Develop a program for rehabilitation of water supply & sanitation in secondary schools, child care institutions & medical centers by 2015

MDG and post 2015 agenda promoting equitable access



MDGs: one target, two indicators

To halve the proportion of the population without sustainable access to safe drinking water and basic sanitation (indicator: use of improved drinking water and sanitation facilities)

Proposed SDGs: including an equity dimension

Goal 6: Ensure availability and sustainable management of water and sanitation for all

Goal 10: Reduce inequality within and among countries

Target 6.1	By 2030, achieve universal and equitable access to safe and affordable drinking water	Target 10.2	By 2030, empower and promote the social, economic and political inclusion of all, irrespective of age, sex, disability, race, ethnicity, origin, religion or economic or other status
Indicator 6.1.1	Percentage of population using safely managed drinking water services	Indicator 10.2.1	Measure the progressive reduction of inequality gaps over time, disaggregated by groups as defined above, for selected social, economic, political and environmental SDG targets (at least one target per goal where relevant should be monitored using this approach)
Target 6.2	By 2030, achieve access to adequate and equitable sanitation and hygiene for all and end open defecation, paying special attention to the needs of women and girls and those in vulnerable situations.	Indicator 10.2.2	Proportion of people living below 50% of median income
Indicator 6.2.1	Percentage of population using safely managed sanitation services		
Indicator 6.2.2	Population with a hand washing facility with soap and water in the household		