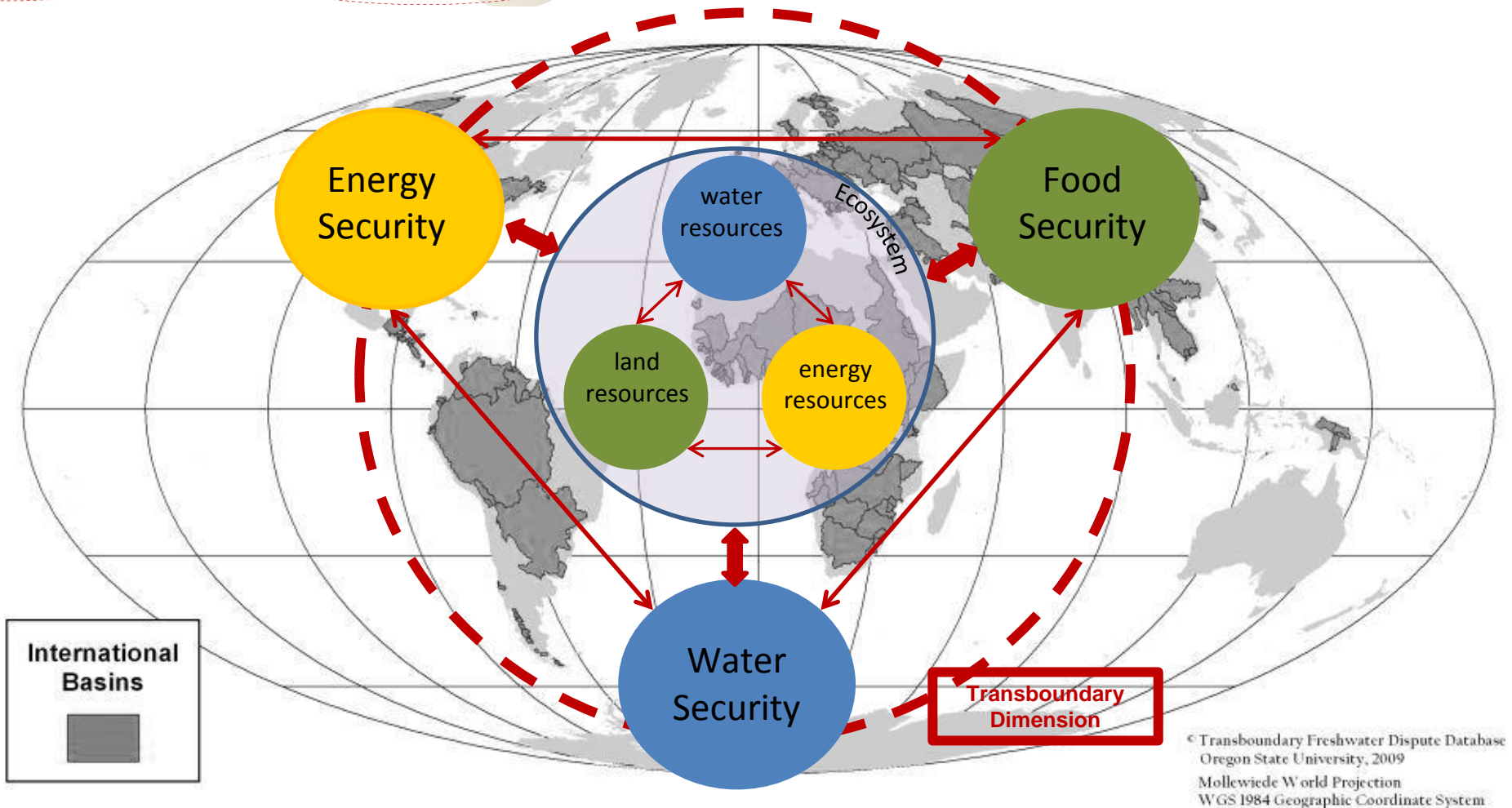


# Nexus Approaches to Transboundary Water Resources Management

## The GIZ Approach

Dr. Susanne Schmeier  
Coordinator “Transboundary Water Management”  
Deutsche Gesellschaft für Internationale Zusammenarbeit (GIZ)

# The nexus in a transboundary context



**The transboundary nature of many rivers, lakes and groundwater bodies adds an additional layer of complexity**

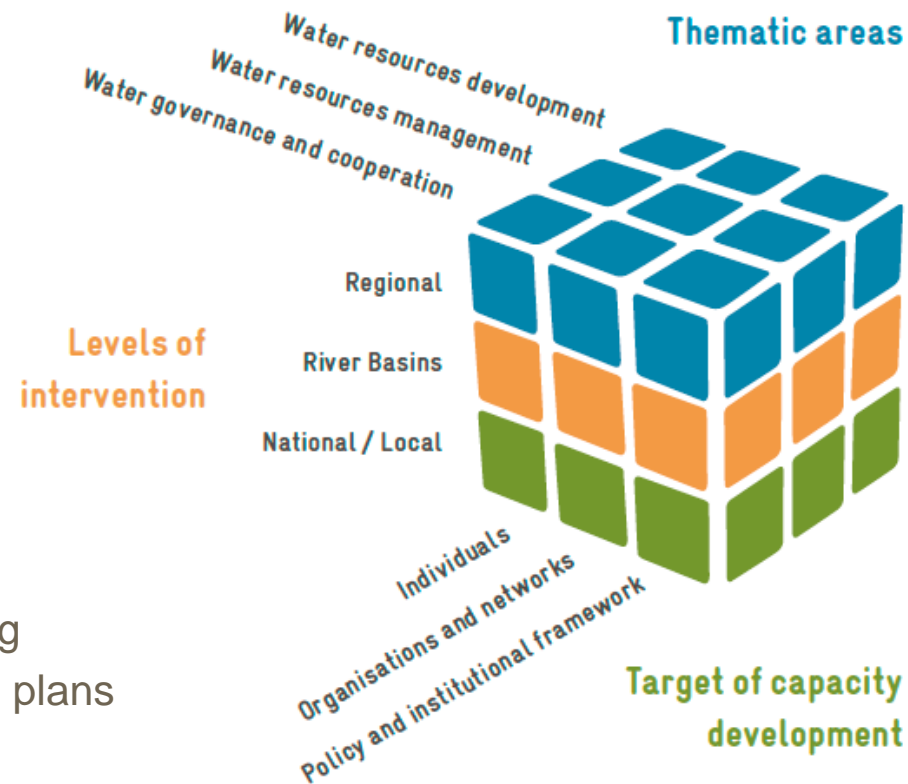
# Nexus Approaches in Transboundary Basins – the GIZ Approach

GIZ supports capacity building on

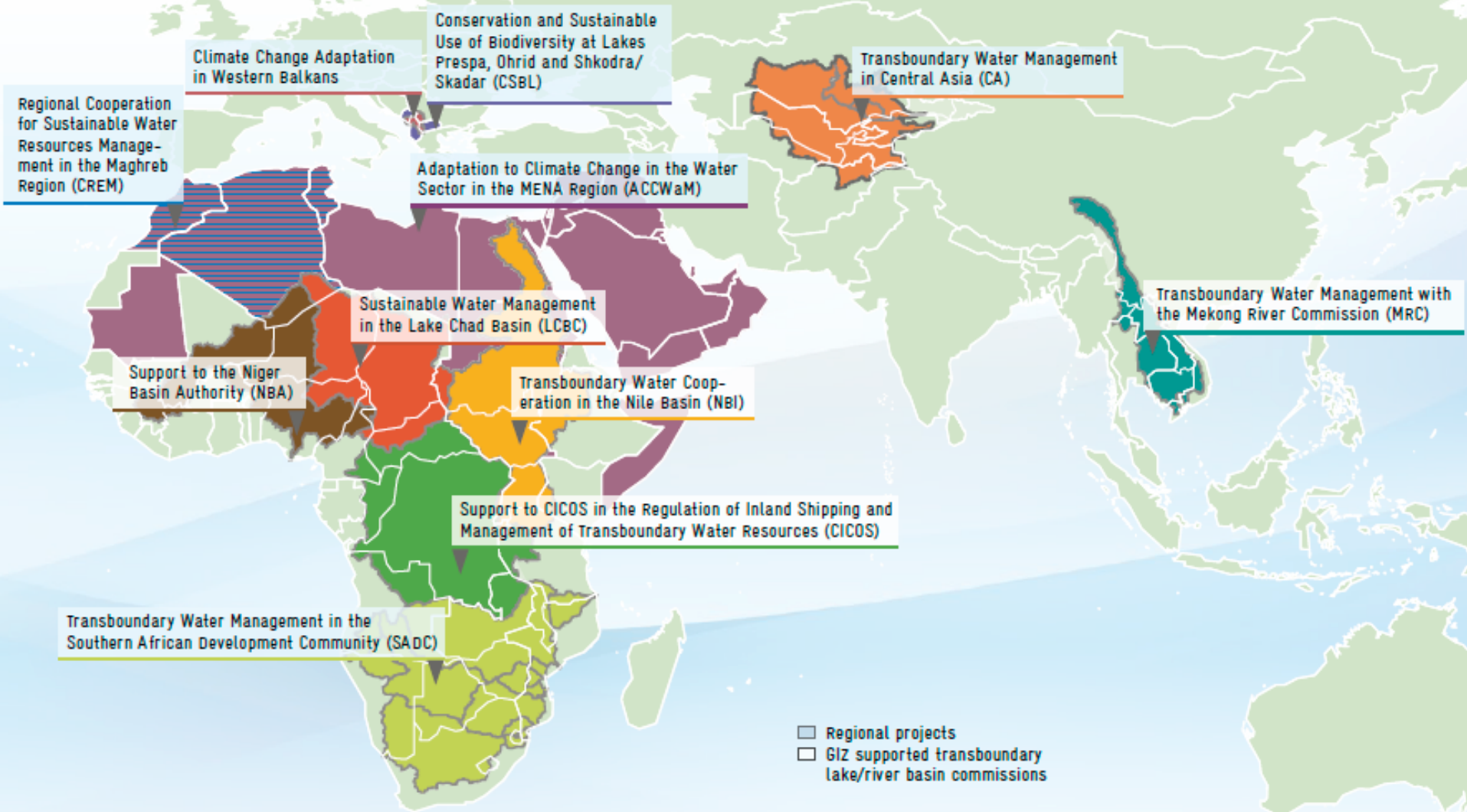
- Water cooperation, governance and diplomacy
- Institutional frameworks and effectiveness
- Water resources development
- Basin planning and management
- Planning/management of water infrastructure
- Climate change adaptation

Nexus perspective as cross-cutting effort

- Bringing together different sectors
- Engaging different stakeholders
- Including other sectors' perspectives in planning
- Developing comprehensive basin management plans
- Developing nexus assessments
- Mainstreaming nexus thinking into water management sectors



# GlZ supports basins in Africa, Asia and Europe



Support to the African Union Commission Water Directorate and the African Ministers' Council on Water (AUC/AMCOW)  
Support to the African Union in the Reform of the Institutional Architecture for Infrastructure Development in Africa (AUC/PIDA)



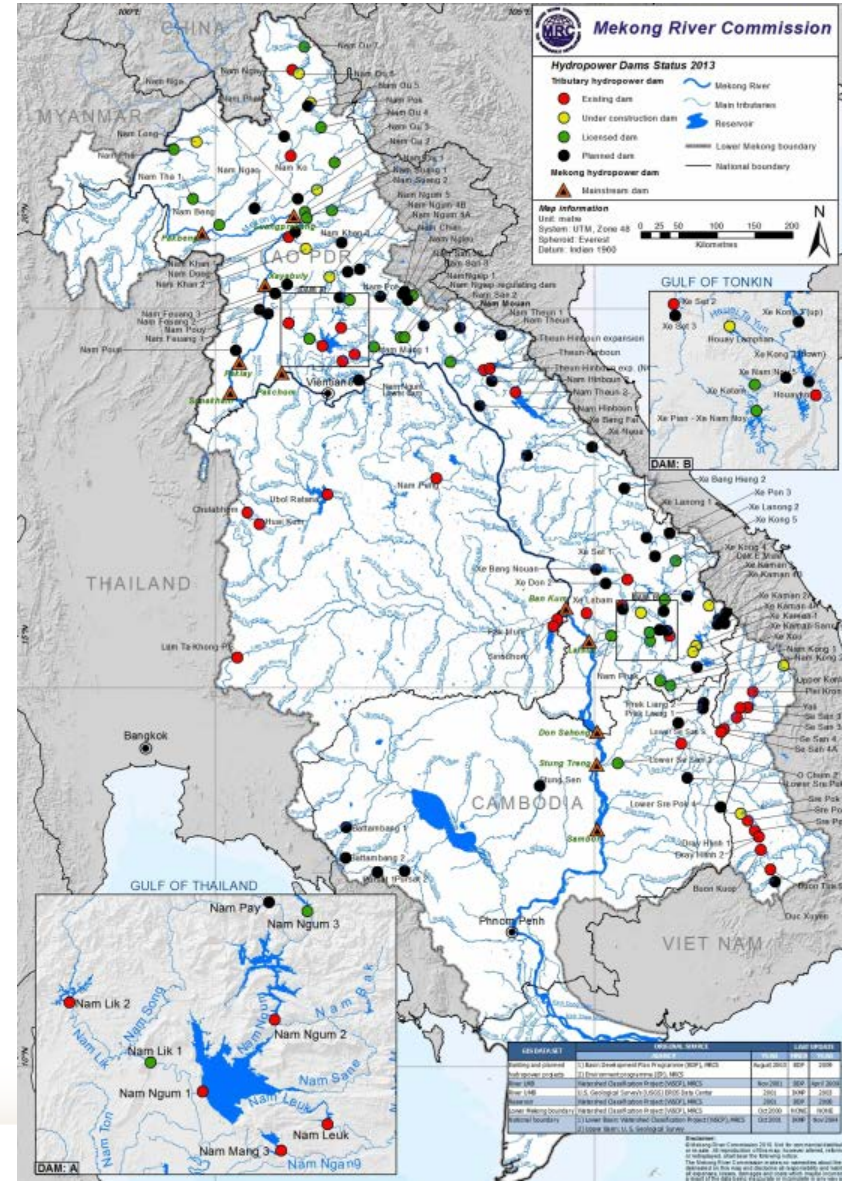
# Hydropower versus fish and food security in the Mekong Basin

**Challenge:** Hydropower development is putting regional food security at risk

**Response:** Nexus approaches that help improving development projects and distributing costs and benefits more equally

**GIZ supports the Mekong River Commission, e.g. in**

- Further improving MRC's position as one of the world's leading RBOs in nexus approaches
- Identifying baseline conditions and change across sectors
- Developing and implementing sustainability assessment tools (RSAT)
- Developing effective mitigation options for hydropower schemes (e.g. fish passage)



# Nexus approaches strengthen sustainable development in the Niger River Basin

**Challenge:** High development pressure in multiple sectors (hydropower, agriculture) in an environment of acute water scarcity and high political tension

**Response:** Nexus approaches for identifying, implementing and operating the best possible projects for the entire basin

**GIZ supports the Autorité du Bassin du Niger,**  
e.g. in

- Developing additional legal and institutional frameworks for nexus challenges – Water Charter/Annexes
- Engaging in transboundary and inter-sectoral basin planning
- Monitoring the environmental and social impacts of infrastructure schemes





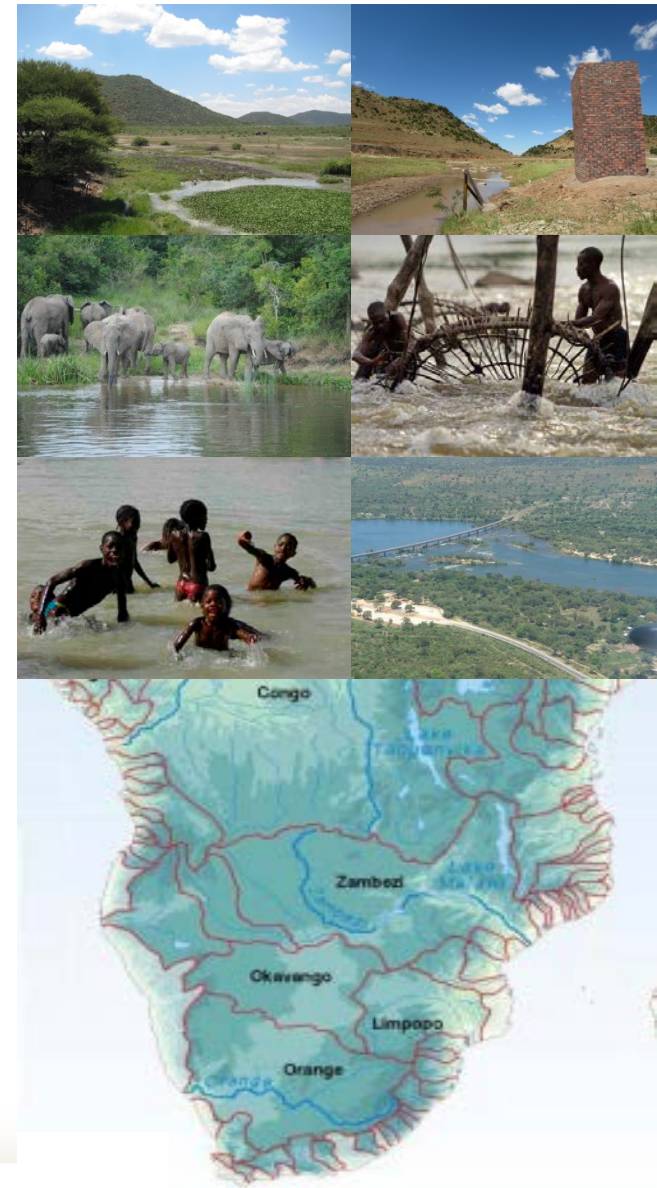
# Nexus approaches at the regional level – Cooperation in Southern Africa

**Challenge:** water scarcity and unequal distribution of water resources, high water needs by all sectors, high share of transboundary basins

**Response:** Nexus approaches for reconciling national interests and for identifying and implementing the best possible projects that provide benefits of cooperation

**GIZ supports SADC and its RBOs, e.g. in**

- Establishing RBOs and strengthening their capacity for cross-sectoral integrated river basin management plans (e.g. in Orange and Limpopo)
- Developing and assessing infrastructure project options for multi-purpose use and inter-sectoral benefits
- Developing guidelines for RBOs on environmental management across sectors
- Implementing transboundary pilot projects with nexus dimensions



# Conclusion



- Transboundary watercourses require transboundary solutions
- The nexus approach has to be implemented at the transboundary level
- RBOs are most advanced in implementing the nexus perspective
- A nexus approach can further strengthen RBOs





# Thank you very much!

