



ERCC

Coordination and Cooperation

15 February 2016

Relevant legislation

Decision 1313/2013/EU of the European Parliament and of the Council

- Based on Article 196 Lisbon Treaty (co-decision with EP and Council)
- Entry into force 1 January 2014
- Repeals Decision 2007/162/EC (Civil Protection Financial Instrument) and Decision 2007/779/EC (Mechanism Decision)

+

Commission Implementing Decision 2014/762/EU

- Sets out rules on matters covered in Article 32(1) of Decision 1313/2013
- Entry into force 17 October 2014
- Repeals all previous implementing decisions i.e. Decision 2004/277/EC, Euratom (rules for implementation, including modules and TAST) and Decision 2007/606/EC, Euratom (transport provisions)

Cornerstones of Decision No 1313/2013/EU

**Culture of
prevention
and
preparedness**

**Replacing
ad-hoc
response
with a pre-
planned
approach**

**Member
States in
control, EU
role to
support,
coordinate
and
supplement**

Why the ERCC ?

➤ **Prepare for and respond to disasters inside and outside the EU**

- Legal and operational requirements for COM in terms of early warning, coordination and support of MS' assistance (e.g. transport funding)
- Greater emphasis on planning and preparing for disasters

➤ **Organizational changes**

- Merger of civil protection and humanitarian aid
- Review of Commission coordination processes (e.g. Argus)

➤ **Institutional changes and legislative initiatives**

- Lisbon Treaty (e.g. Solidarity Clause)
- New Union Civil Protection Mechanism

What can the ERCC offer?

➤ Continuous monitoring and coordination

- 24/7 capacity with instant reactivity inside and outside EU
- Experts and relief teams worldwide, humanitarian budget. Coordination with ECHO offices/Delegations.

➤ Operations rooms and liaison offices

- Management of multiple emergencies simultaneously
- Real-time information sharing (e.g. Crisis Flash and Crisis Report) and coordination with partners (e.g. Commission and EEAS)

➤ Tools and resources

- Early warning, scientific analysis, mapping capacities, transport and logistics, videoconferencing facilities, network of Civil Protection authorities and ECHO field presence

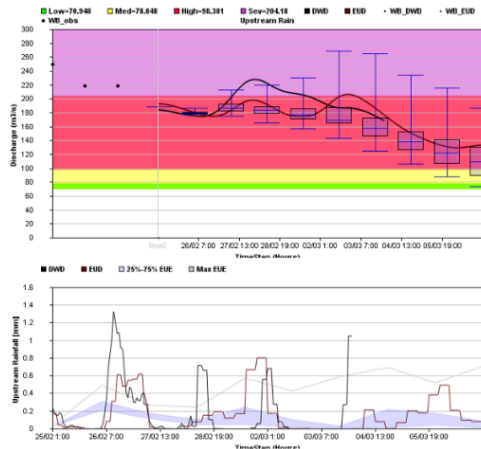
➤ Public space

- Meeting space (outreach to partners, stakeholders, scientific community)

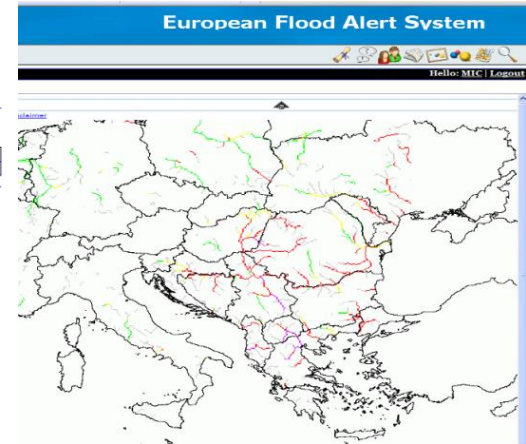
Monitoring Tools



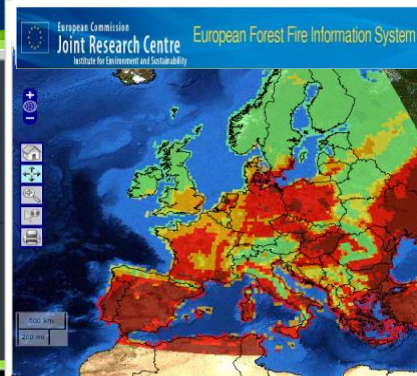
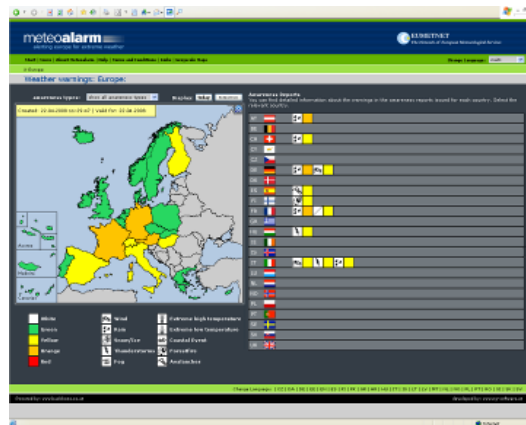
GDACS: Global Disaster Alert And Coordination System



EFAS - European Flood Awareness System: Floods forecasting and Flood alerts



Weather monitoring



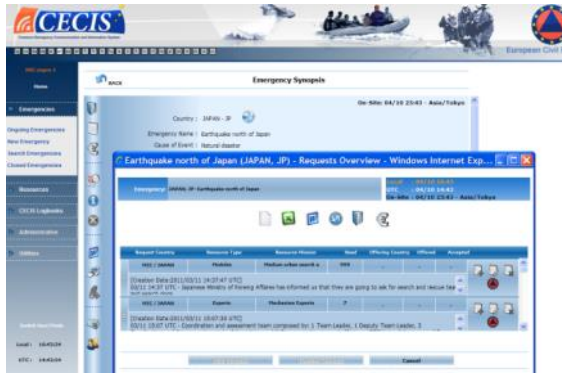
EFFIS – European Forest Fire Information System: Fires forecasting



European
Commission

Information

CECIS: Common Emergency Communication and Information System



Website:
www.europa.eu/echo



ECHO/ERCC Portal

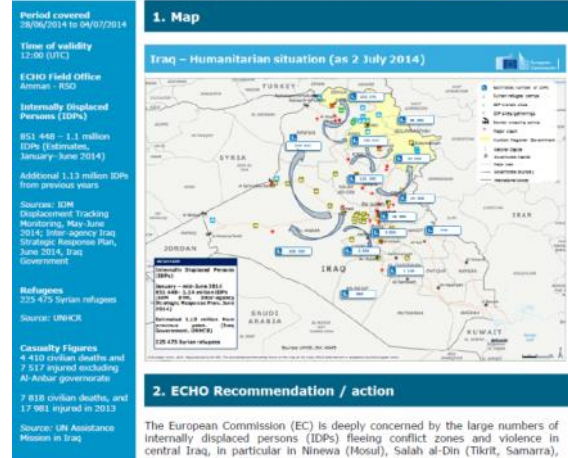


ECHO Crisis Reports



IRAQ CRISIS

ECHO CRISIS REPORT N°6

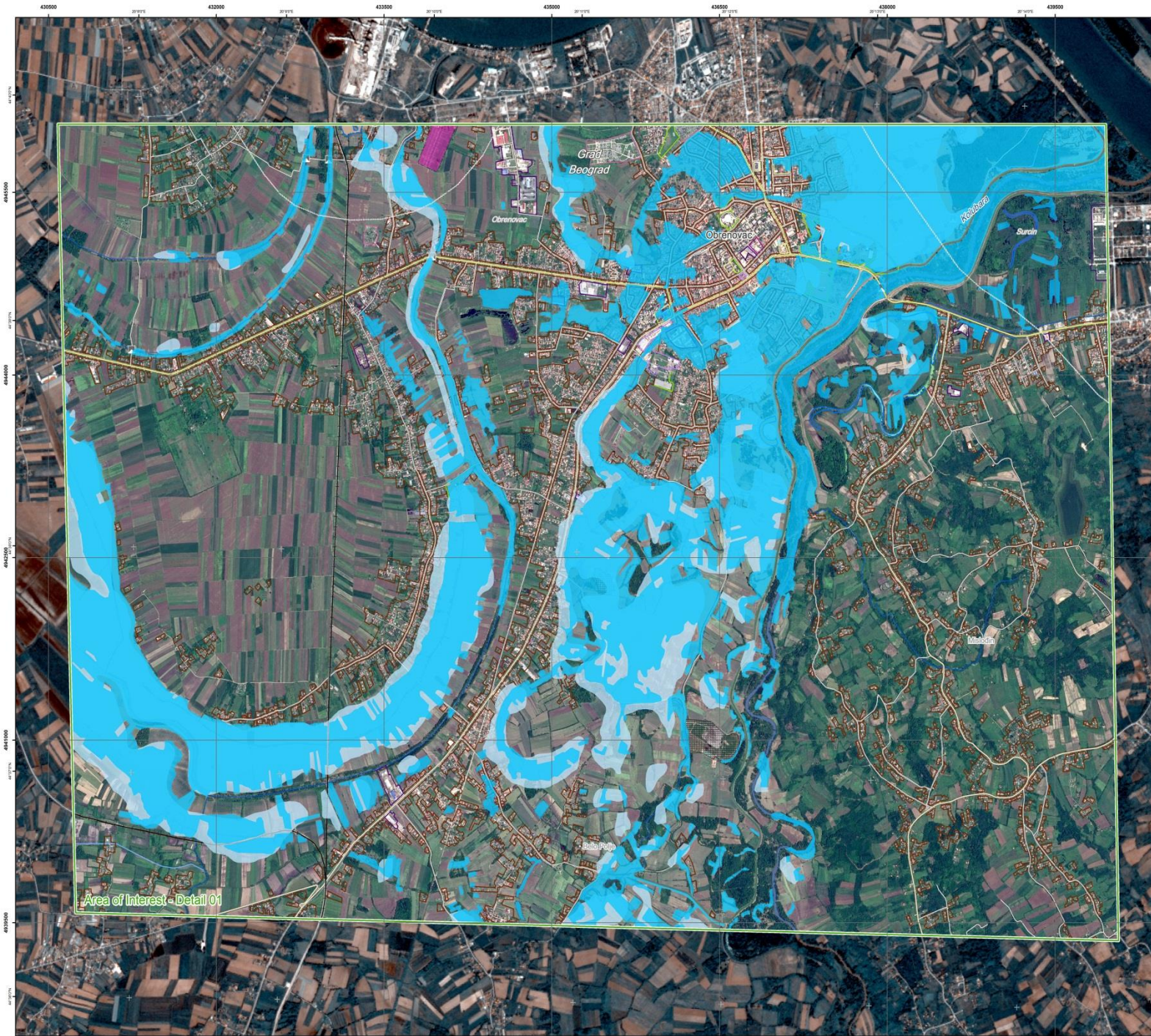


ECHO Daily Flash



ECHO Daily Map





GLIDE number: FF-2014-000059-SRB Activation ID: EMSR-086
Product N.: 02Lazarevac. v2

Lazarevac - SERBIA
Flood - 15/05/2014
Delineation Map - Detail 01 - Monit01

Production date: 24/05/2014



Cartographic Information

1:15000 Full color ISO A1, high resolution (300 dpi)



Grid: WGS 1984 UTM Zone 34N map coordinate system
Tick marks: WGS 84 geographical coordinate system

Legend

Legend

Legend

Crisis Information	Hydrology	Transportation
Flooded Area (21/05/2014 09:52 UTC)	Stream	Bridge
Area flooded area (18/05/2014 16:25 UTC)	Canal	Railway
General Information	River	Primary Road
Area of Interest	Lake	Secondary Road
Administrative boundaries	Industry / Utilities	Local Road
Municipality	Evaporation Min.	

Settlements

Settlements
Populated Place

	Consequences within the actual ACR on 21/05/2014			Total in ACR		
	Plotted area	Estimated population	incidents	2008	1998-2008	1998-2008
Residential						
Cemetery						
Commercial						
Industrial						
Institutional						
Medical						
Recreational						
Industry / Utilities						
Transportation						
Land use						

Map Information

Due to prolonged heavy rainfalls and widespread flooding that hit large parts of Serbia, the State of Emergency was declared in the whole territory of the country on 15 May 2014. The core users of the map are Civil Protection authorities involved in in-field operations. The scope of the map production is planning and support to logistics.

Data Sources

Inset maps based on: Administrative boundaries (JRC 2013, GISC0 2010, © EuroGeographics), Hydrology, Transportation (Natural Earth 2012, CCM River DB © EU-JRC 2007), Settlements (Geonames, 2013).
SPOT-6 © Airbus Defence and Space (acquired on 21/05/2014 09:02 UTC, GSD 1.5 m, 0% cloud coverage) All rights reserved provided under ESA GSC-DA DWH License.
TerraSAR-X © Infoterra GmbH (acquired on 18/05/2014 16:25 UTC, GSD 18 m). All rights reserved.

Pre-event imagery: SPOT-5 © Airbus Defence and Space (acquired on 10/05/2011 09:33 UTC, GSD 5 m, 0% cloud coverage) All rights reserved provided under ESA GSC-DA DWH license.

Base vector layers based on CORINE Land Cover © European Union, OpenStreetMap © OpenStreetMap contributors, Wikimapia.org, GeoNames (approx. 1:10,000, extracted on 16/05/2014), retrained by SRS. Source information is included in vector data.
Elevation data: EU-DEM (25m posting). Height in meters above mean sea level.

Population data: Landsat 2010 © UT BATTELLE, LLC.
All Data sources are complete and with no gaps.

Dissemination/Publication

No restrictions on the publication of the mapping apply.
Delivery formats are GeoTIFF, GeoPDF, GeoJPEG and vectors (shapefile and KML formats).

Framework

The products elaborated in the framework of current mapping in rush mode activation are realized to the best of our ability, within a very short time frame during a crisis, optimizing the available data and information. All geographic information has limitations due to scale, resolution, date and interpretation of the original data sources. The products are compliant with GIO-EMS RUSH Product Portfolio specifications.

Map Production

[illegible]

Map products available at <http://emergency.copernicus.eu/mapping/list-of-components/EMSR06>



GUIDE number: N/A
 Activation ID: E000000000
 Product ID: E000000000

Fischbeck - GERMANY **Flood - 17/06/2013** **Delineation Map - Detail**

Publication date: 21/06/2013

Cartographic Information

1:15000 Full color (30 A1, high resolution 300 dpi)

Map Coordinate System: WGS 1984 UTM Zone 32N

Gridlines: WGS 84 geographical coordinates

Legend

Crisis Information

Flooded Area (16/06/2013)

General Information

Area of Interest

Administrative boundaries

Municipality

Settlements

Prescribed Place

Residential

Commercial

Industrial

Transportation

Hydrology

Water

Stream

Canal

Lake

Flow

Point of Interest

Educational

Industrial

Institution

Religious

Transportation

Station

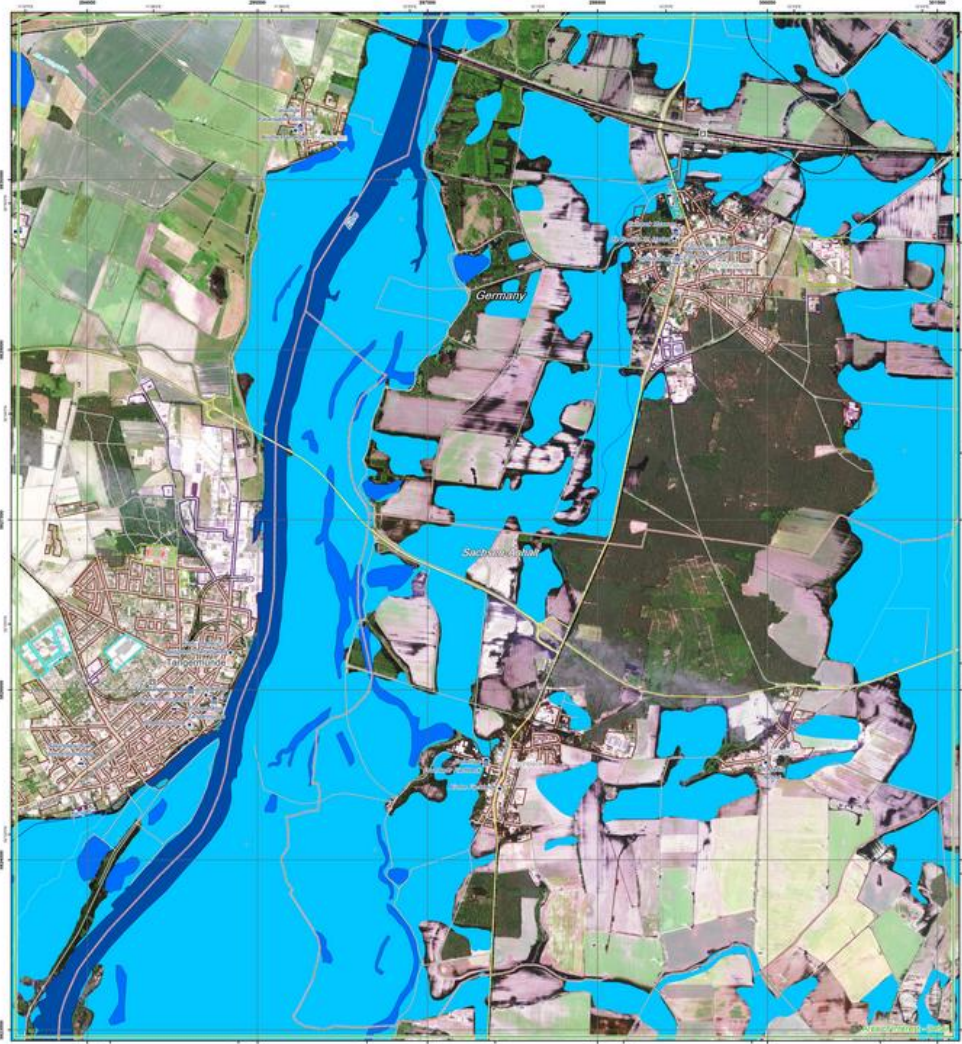
Highway

Primary Road

Boundary Road

Local Road

Population	Consequences within the Detail ACP on 16/06/2013
Transportation	Affected Roads
	20 km
	2.5 km
Land Use	Affected Agriculture
	100 km
	1.5 km
	Affected Residential
	1.5 km
	Affected Industrial
	0.5 km
	Affected Transportation
	0.5 km



Map Information

Map of Fischbeck and area will be the blue, other than existing reference damage in water and water.

Dissemination/Publication

The authors of the publication of the meeting date.

Data Sources

Data maps based on: Administrative boundaries (2011, 2012, 2013, in a European Commission).

Framework

The project is organized in the framework of a project meeting in order to coordinate the work of the project.

Map Production

The project has been funded by the European Commission, Directorate General for Regional Development.





ERCC: Three Main Functions

- 1. Coordination of disaster response** within the framework of the **new Union civil protection legislation**
- 2. Coordination platform for humanitarian aid and civil protection operations**
- 3. Enhanced coordination hub for the whole Commission and broader EU**

Types of disasters covered by UCPM

- **Natural disasters**

- Floods, earthquakes, forest fires, cyclones

- **Manmade disasters**

- Environmental disasters (HU alkali sludge accident 2010)
- Complex emergencies (Iraq, Syria, Refugee Flow – W Balkans)

- **Health emergencies**

- Ebola epidemic

- **Assistance to consular support**

- Evacuation of EU citizens from Libya, Yemen and TCN from Tunisia/Egypt



ERCC: Three Main Functions

- 1. Coordination of disaster response** within the framework of the **new Union civil protection legislation**
- 2. Coordination platform for humanitarian aid and civil protection operations**
- 3. Enhanced coordination hub for the whole Commission and broader EU**

ERCC as HA-CP coordination hub

- 1. Joint Situational Awareness – ECHO internal coordination meetings every morning*
- 2. ECHO rapid response capacity*
- 3. Coordination of in-kind (CP) and financial (HA) assistance*
- 4. Deployment of coordination and assessment teams – joint assessments by HA and CP experts*

ERCC: Three Main Functions

- 1. Coordination of disaster response within the framework of the new Union civil protection legislation**
- 2. Coordination platform for humanitarian aid and civil protection operations**
- 3. Enhanced coordination hub for the whole Commission and broader EU**

Disasters – joint EU action

- *ECHO-SANTE-DEVCO-EEAS: West Africa – Ebola Virus Outbreak*
- *ENER: Expertise and Dosimeters (Fukushima)*
- *EEAS / JUST: Libya consular assistance*



Disasters – joint EU action

- *EEAS/EUMS/ECHO: Military transport of assistance to Pakistan*
- *EEAS/ECHO: Disaster preparedness mission to Nepal 2013*

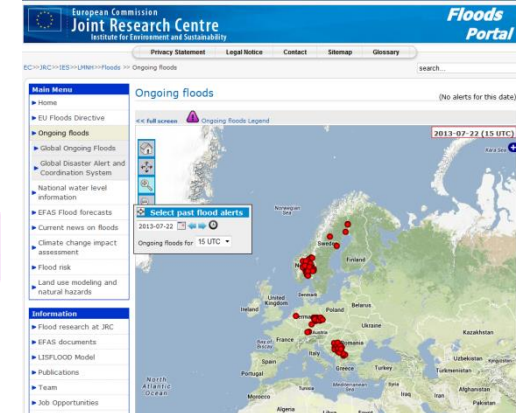
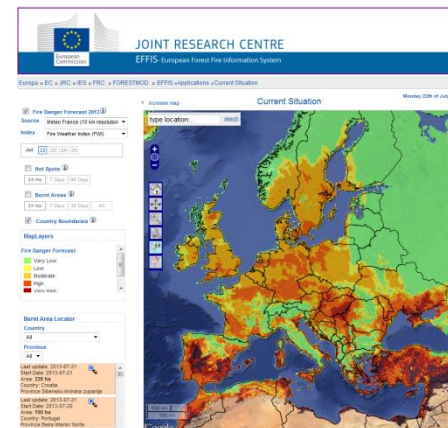


Disasters – joint EU action

- *GROW: Emergency Management Service Mapping*
- *JRC: early warning systems, mapping, analyses*



European Flood Awareness System



European Forest Fire Information System

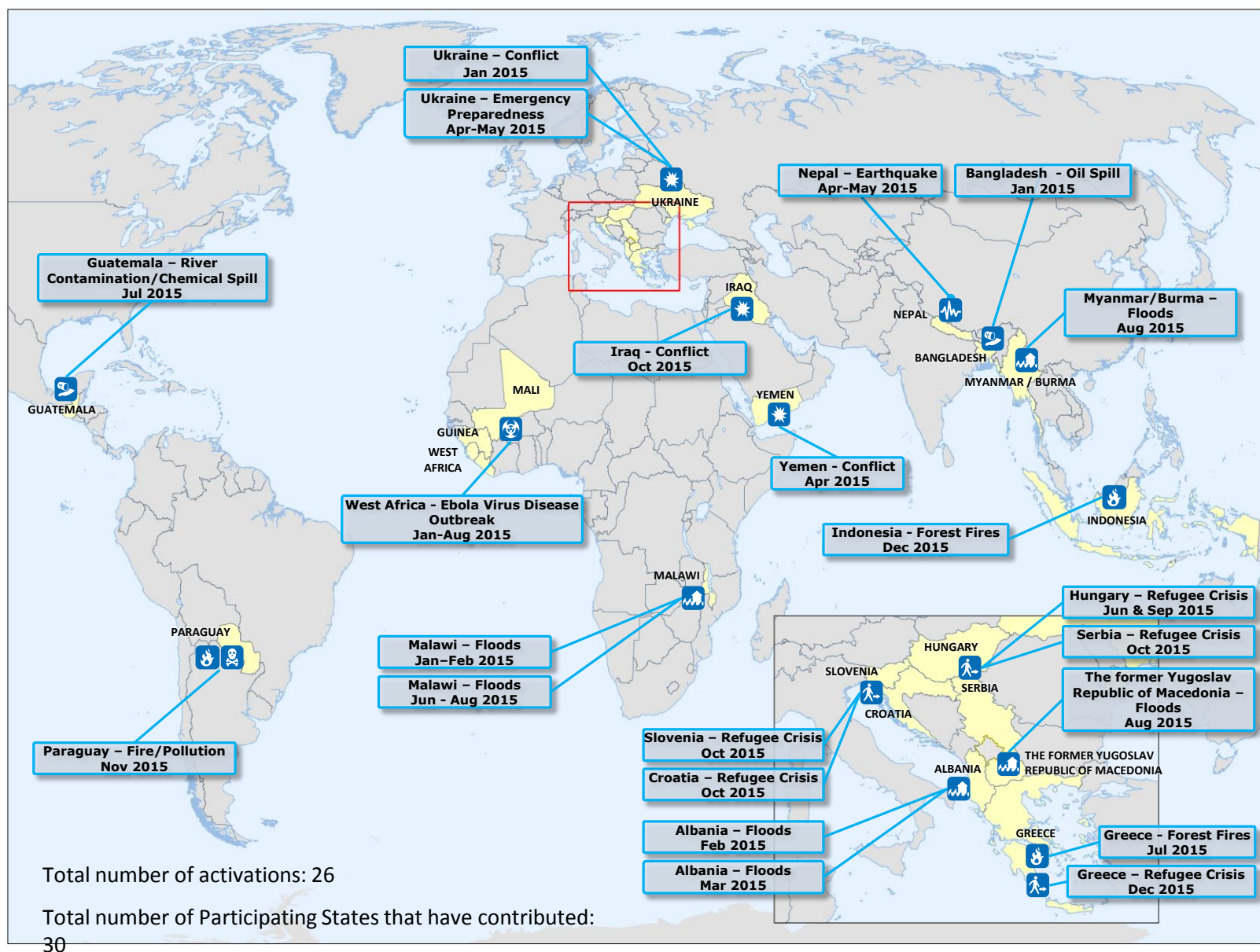
ERCC as Coordination Hub for Commission **and Broader EU**

1. Entry point for Solidarity Clause activations
2. Entry point for the activation of Integrated Political Crisis Response (IPCR) arrangements
3. Distribution of Integrated Situational Awareness and Analysis (ISAA)

EU Civil Protection Mechanism Activations in 2015

Participating States that have offered assistance

	Austria
	Belgium
	Bulgaria
	Croatia
	Cyprus
	Czech Republic
	Denmark
	Estonia
	Finland
	France
	Germany
	Greece
	Hungary
	Ireland
	Italy
	Latvia
	Lithuania
	Luxembourg
	Malta
	Montenegro
	Netherlands
	Norway
	Poland
	Portugal
	Romania
	Slovakia
	Slovenia
	Spain
	Sweden
	United Kingdom



Emergency Response Coordination Centre (ERCC)



T: +32 2 29 21112

@: echo-ercc@ec.europa.eu

Thank you for your attention

DG ECHO – Humanitarian Aid and Civil Protection

<http://ec.europa.eu/echo/>