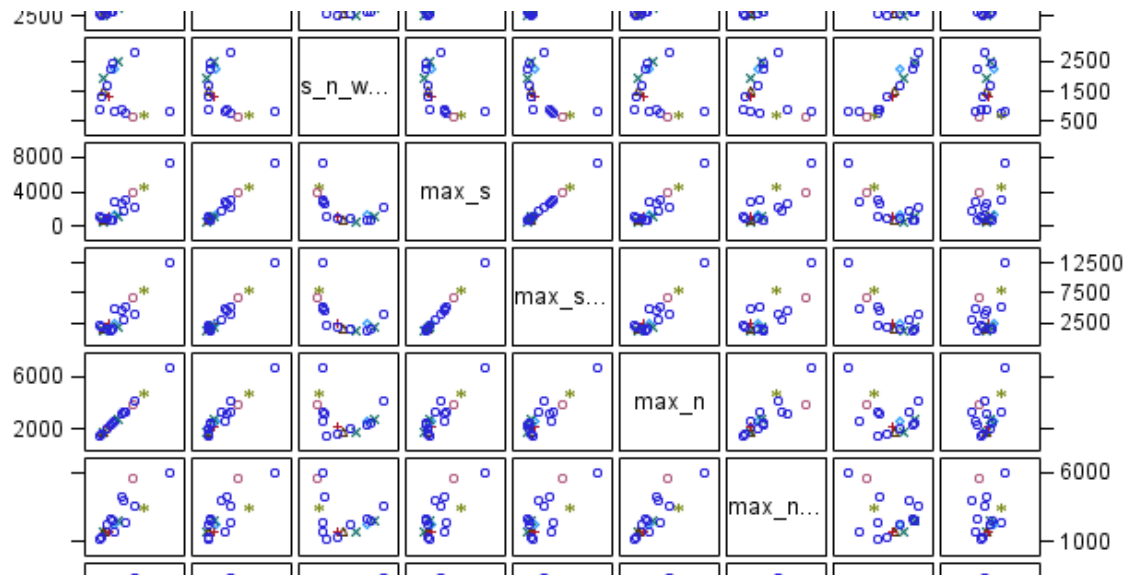


ICP Forests Report

Geneva, March 2015



March 2015

ICP Forests Reports/Tasks

Report ICP Forests

Publication of Executive Report 2013

Publication of Technical Report 2014

Drafts to WGE/EMEP Trends Report from 3 domains (crown condition, foliar, ground level ozone).

Joint Expert Panel Meeting: EP Deposition, EP Foliar, EP Crown, EP Ambient Air Quality, Soil and Soil Solution. 21 – 24 April 2015

Next Task Force Meeting: 19 – 22 May 2015 in Ljubljana/Slovenia

Back to back with Scientific Conference of ICP Forests „Long-term trend and effects of air pollution on forest ecosystems, their services, and sustainability “

Update of the ICP Forsts Strategy 2016 – 2023

Update of ICP Forests data policy

ICP Forests Reports/Tasks

ICP Forests will contribute to the report on the “State of Europe’s Forests 2016” an initiative of the Ministerial Conference on the Protection of Forest in Europe (MCPFE process located at EEA).

- **Crown Condition and N deposition (Exceedances of CL)**

Nitrogen and Crown Condition: two Papers: Ferretti et al. 2014 GCB; de Marco et al. 2014, Env. Poll.

N does have importance for CC, however it can be positive or negative; There is still need for further research

ICP Forests Reports/Tasks

- Tree increment and N deposition

We see in increased increment at poor sites, however, no decrease (toxic effects) at fertile sites.

- **Nitrogen effects on lichens and mycorrhiza** could be shown, nitrogen can well be indicated by mosses (coop. with ICP Vegetation)

- Nitrogen deposition and phytopatogens

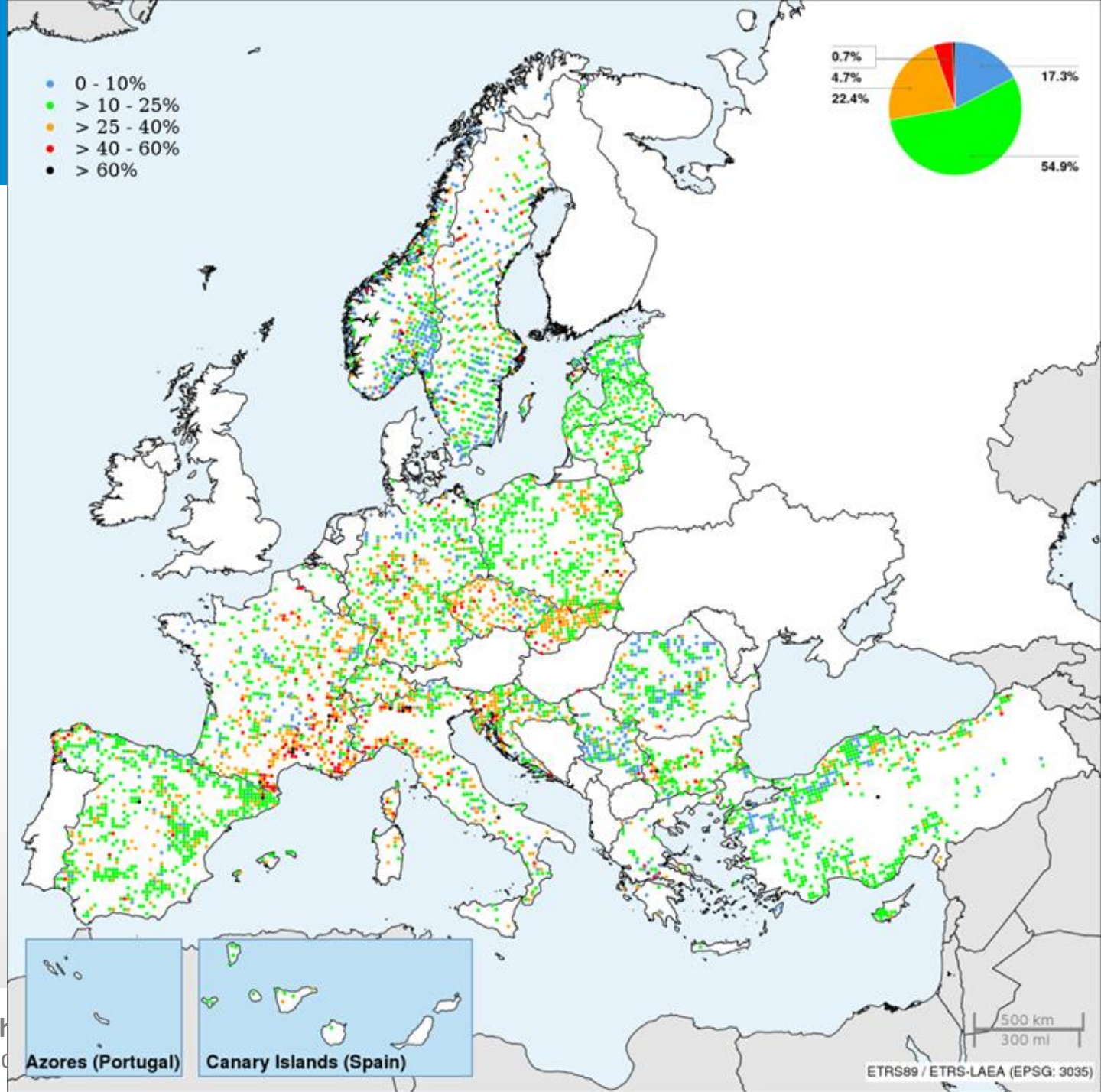
still open

ICP Forests Reports/Tasks

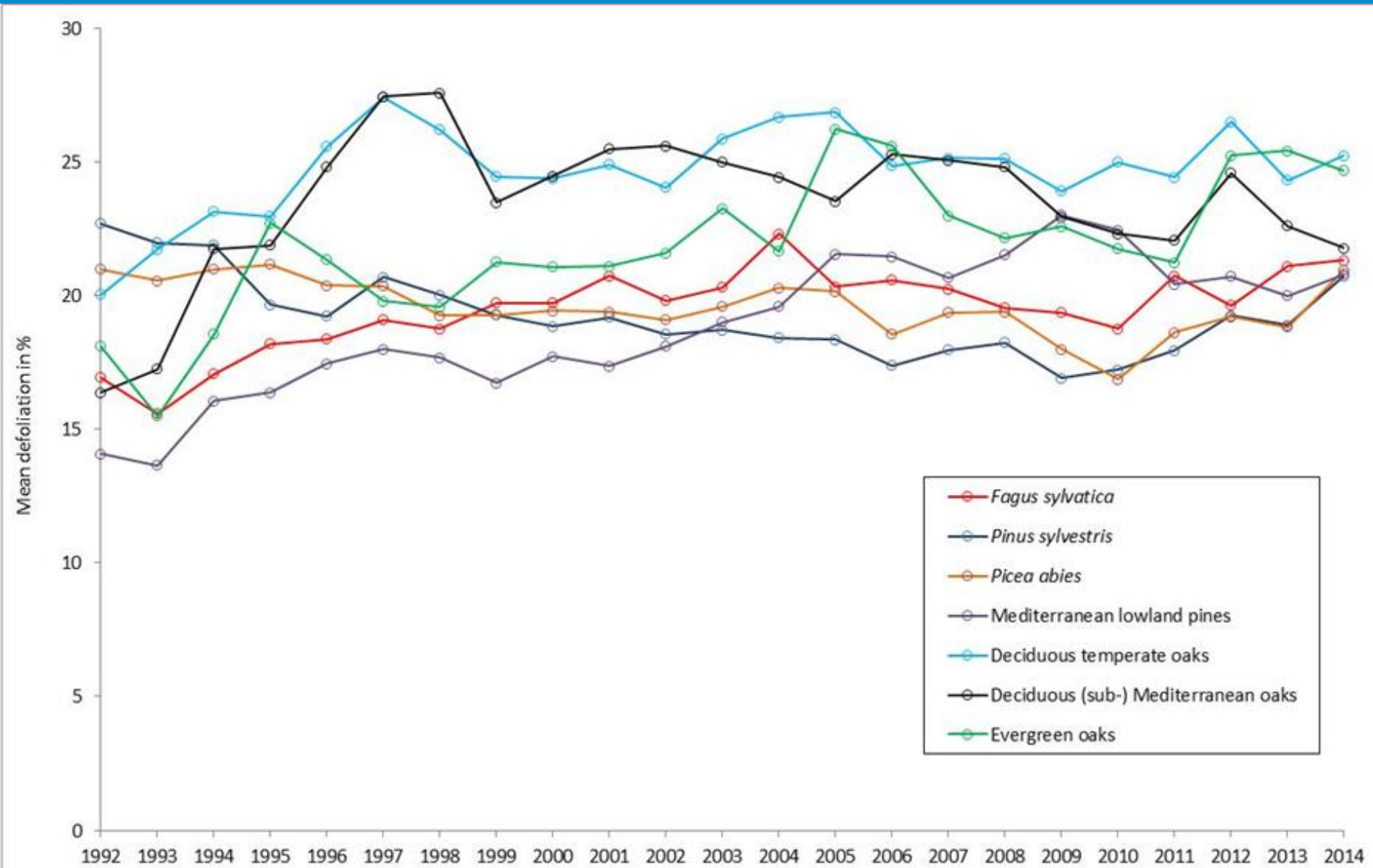
- Nitrogen and Groundwater

There is a study from the Netherlands, clearly showing reduced N outputs from the soil to the groundwater.

Mean defoliation, all species, 2014

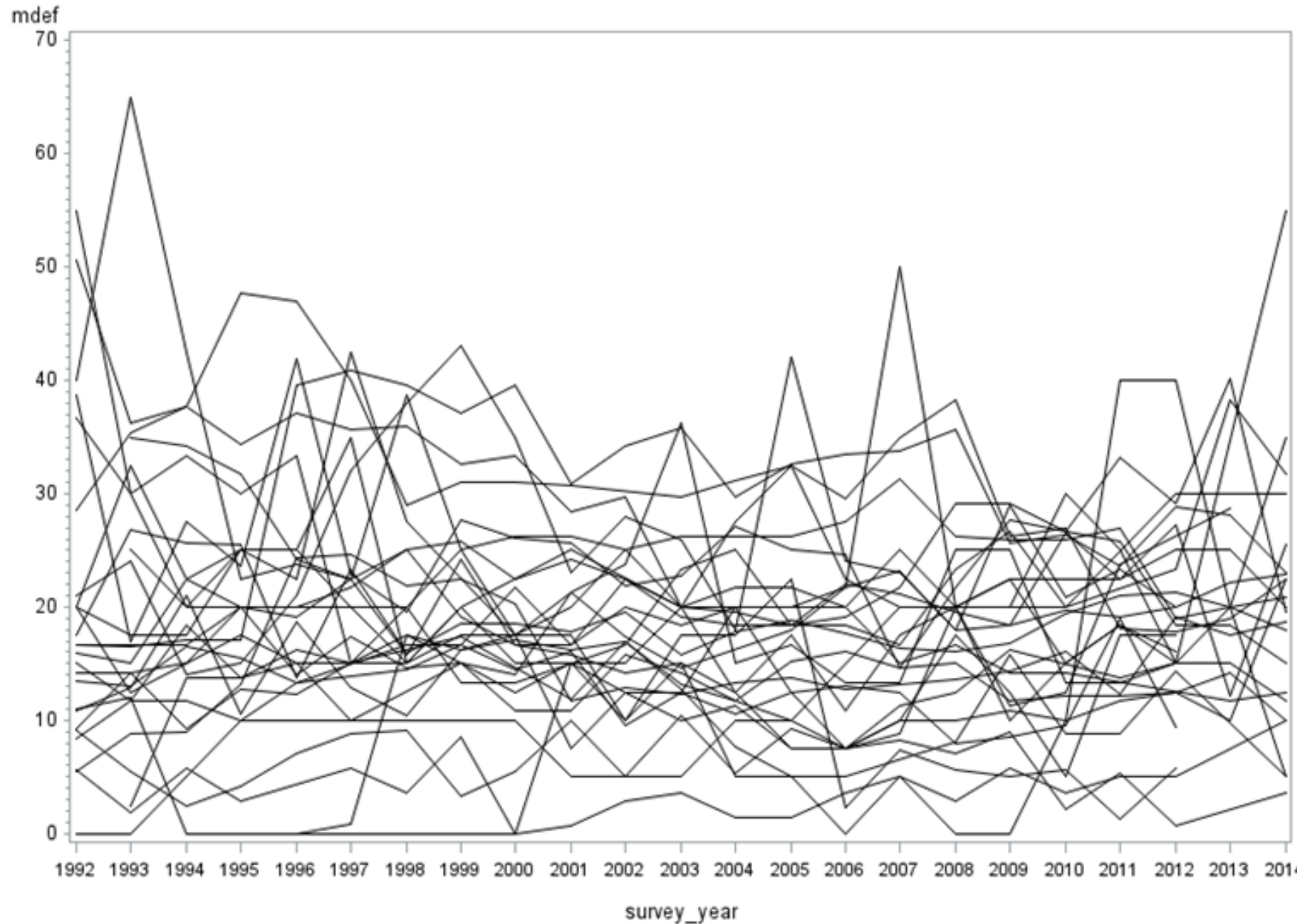


Development of species-specific means



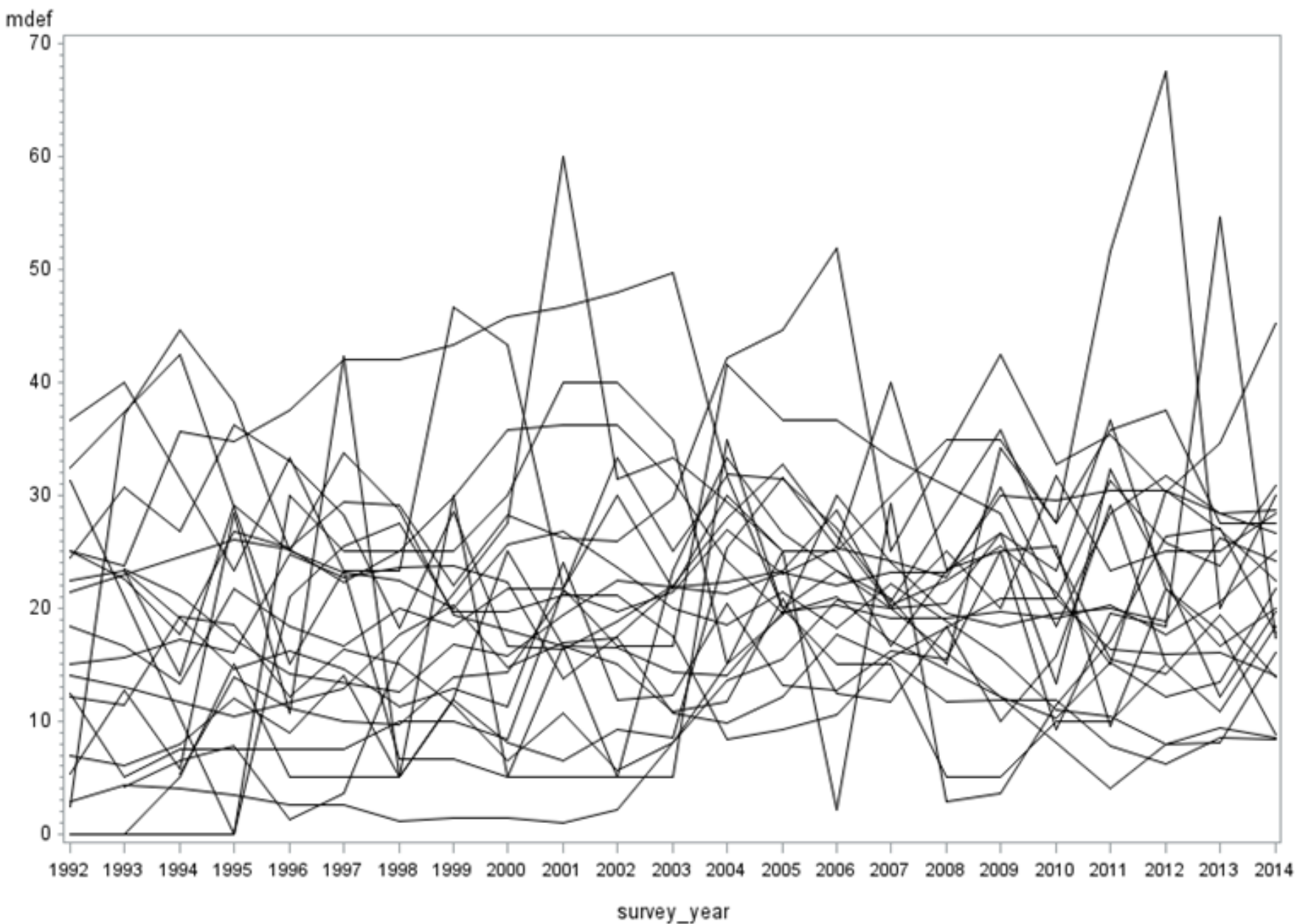
Development of randomly selected plot-specific means (1/10th from each country)

Pinus sylvestris



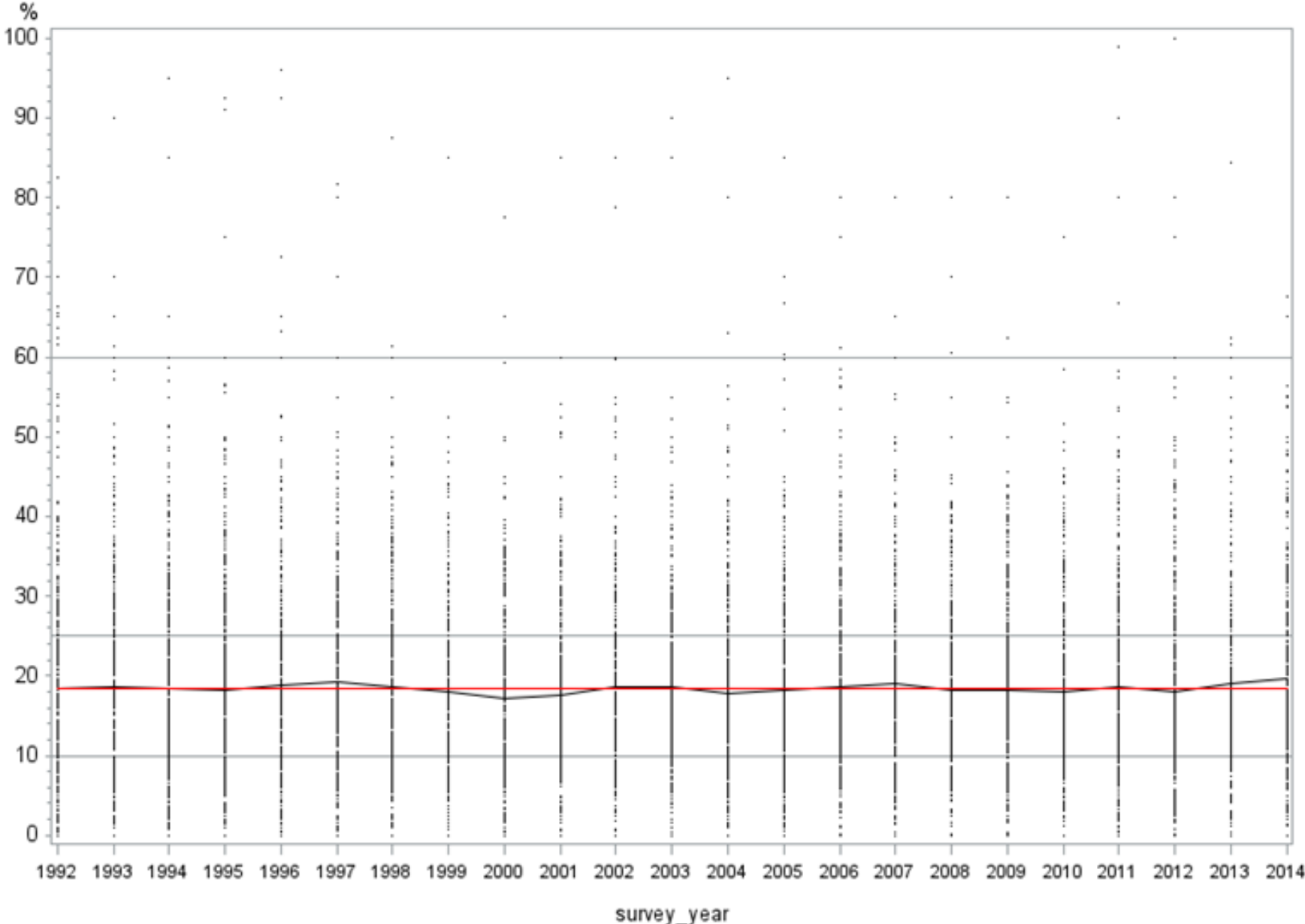
Development of randomly selected plot-specific means (1/10th from each country)

Fagus sylvatica

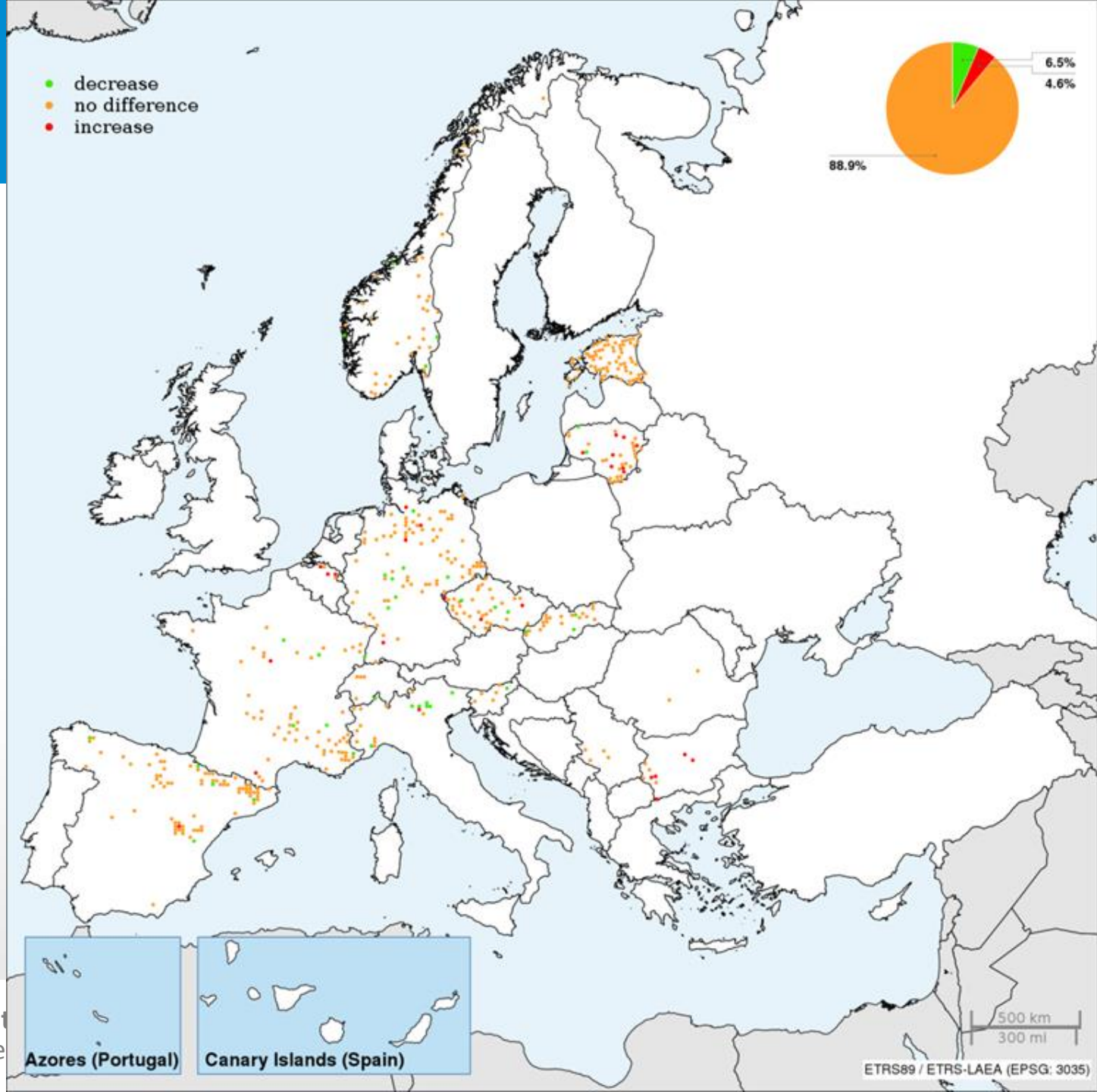


Species specific long-term trend (regional Sen's slope) of defoliation

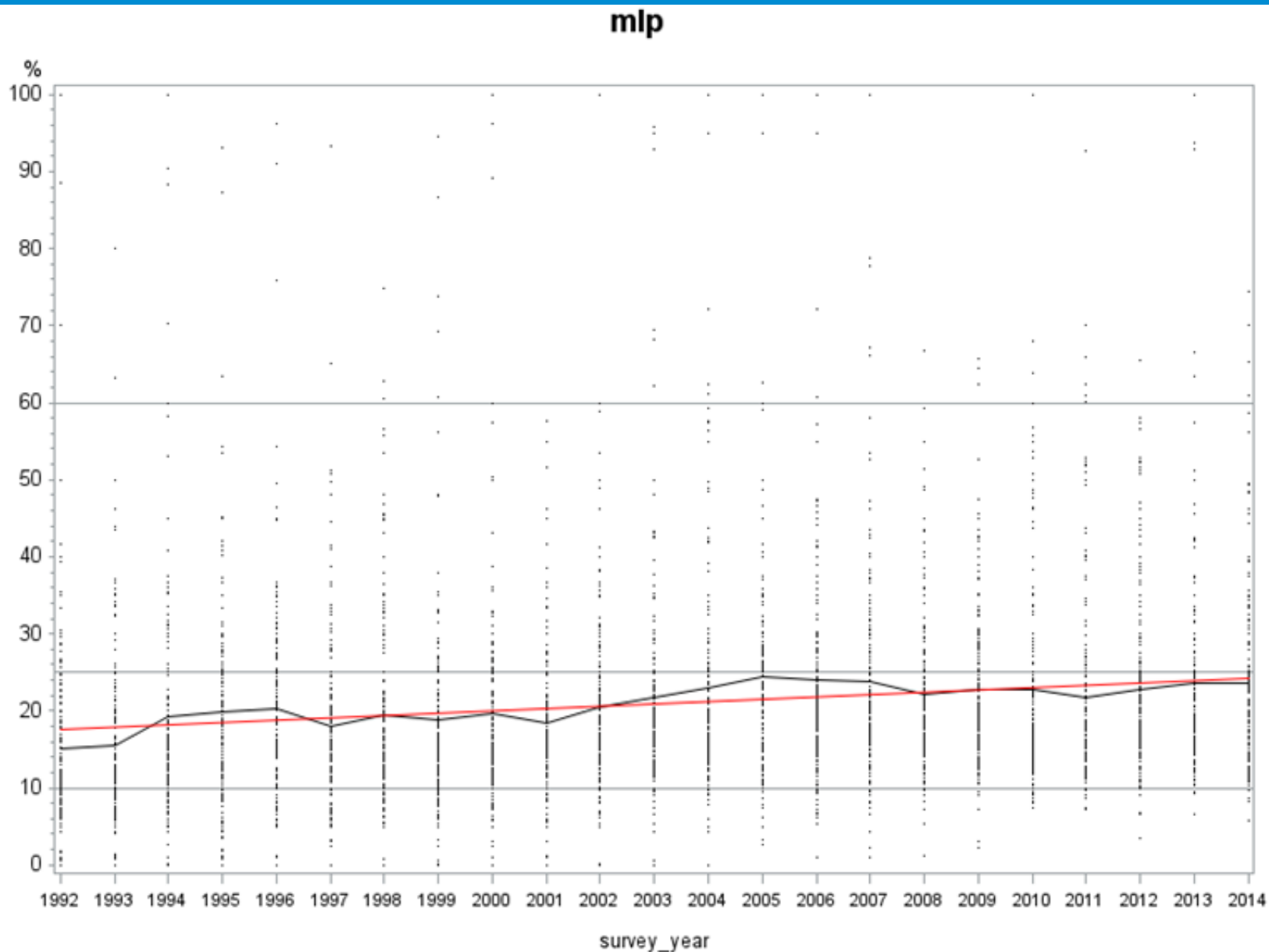
Pinus sylvestris



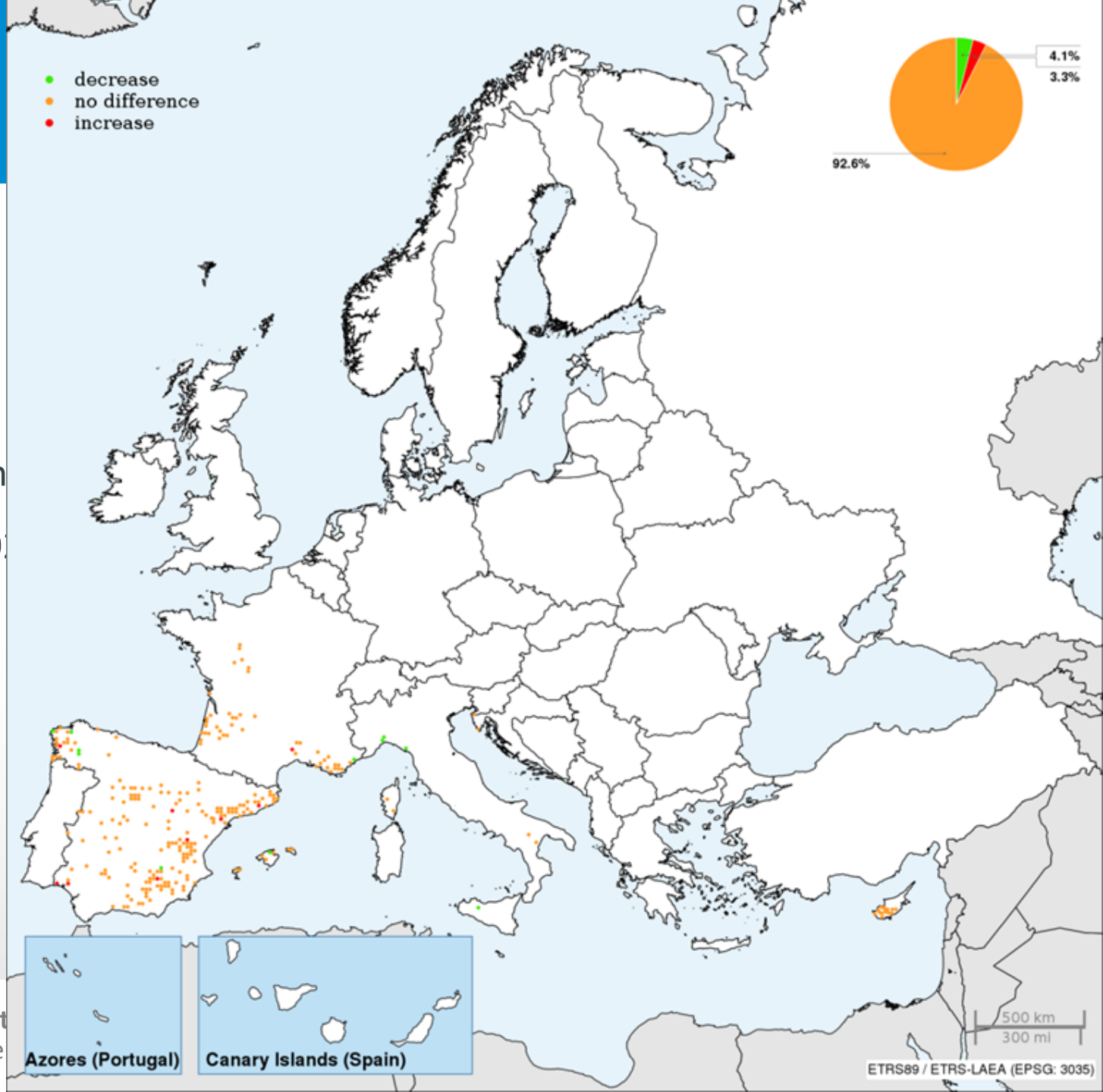
Plot related
Sen's slopes of
defoliation
for *Pinus
sylvestris* 2002 –
2014



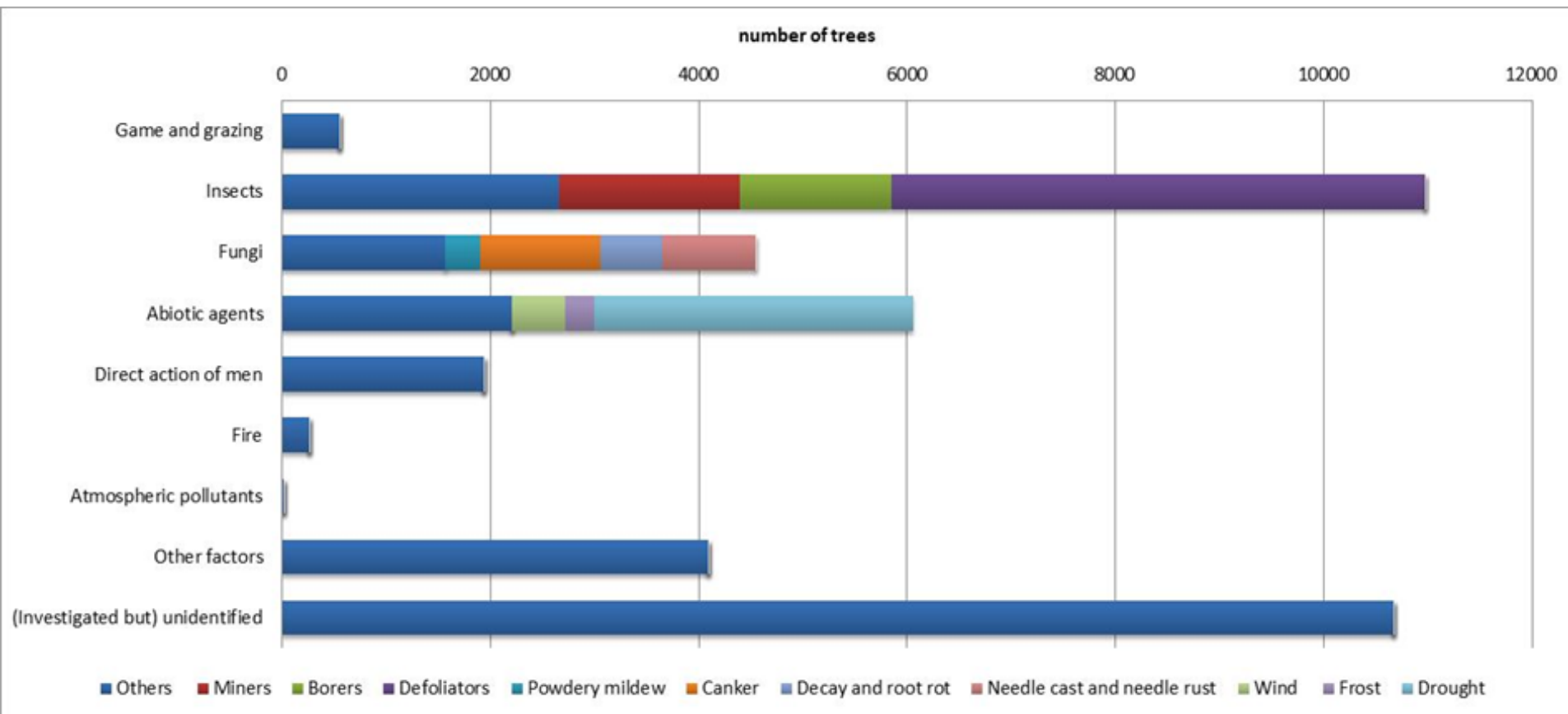
Species group specific long-term trend (regional Sen's slope) of defoliation (Mediterranean lowland pines (*Pinus brutia*, *P. halepensis*, *P. pinaster*, *P. pinea*))



Plot related
Sen's slopes of
defoliation
for Mediterranean
lowland pines 2000-
2014



Damage cause assessment in 2014



Nitrogen

NH₄-N throughfall
deposition 2013
[kg ha⁻¹ y⁻¹]

Maximum 17.6 in
Bavaria/Germany

- 0 - 4 kg/ha
- > 4 - 8 kg/ha
- > 8 kg/ha

