

# Introduction to the UNECE Workshop: A Road-Map to energy efficiency in the residential sector in Georgia

Doris Andoni

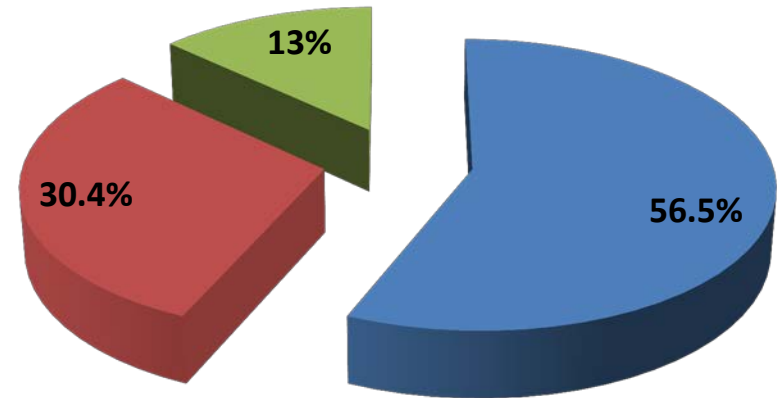
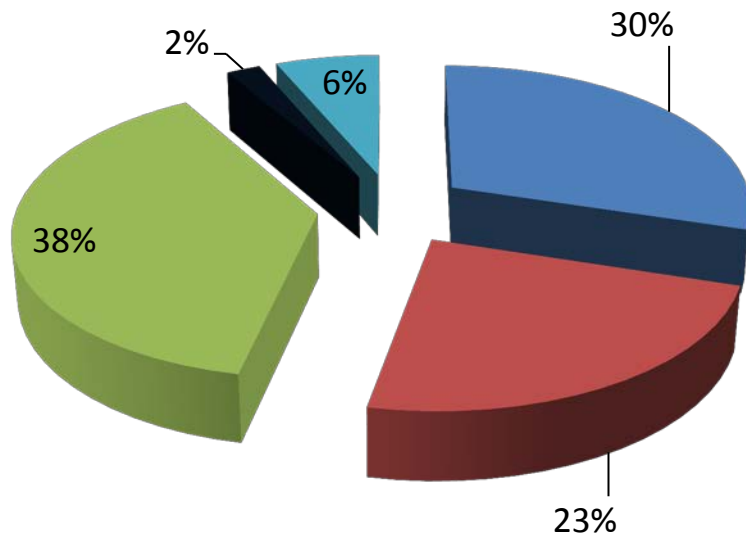
UNECE, Housing and Land Management Unit

Tbilisi, Georgia, 18 September 2013





# Regional Survey on Housing and Land Management



■ EU 15

■ EU 12

■ Russia, SEE, CCA

■ CHLM

■ WPLA

■ International experts

■ USA & Canada

■ Other





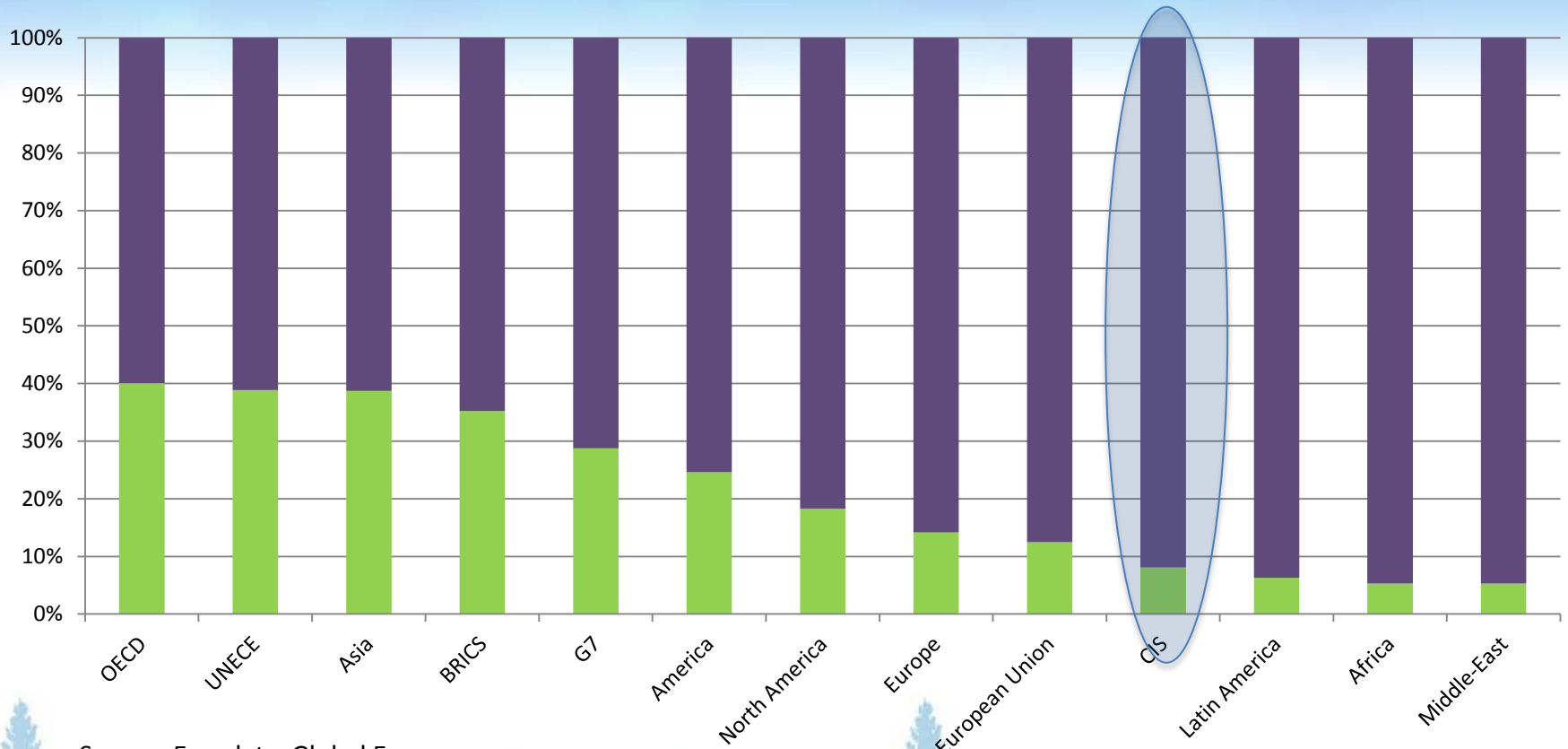
**Inefficient use of energy in the residential sector – one of the major challenges for the region**



**UNECE region is responsible for some 40% of the total energy consumption**



# CIS countries are responsible for some 20% of UNECE energy consumption



Source: Enerdata, Global Energy Statistical Yearbook, 2013





# Buildings account for:

**60% of global electricity use**

**40% of global total energy consumption**

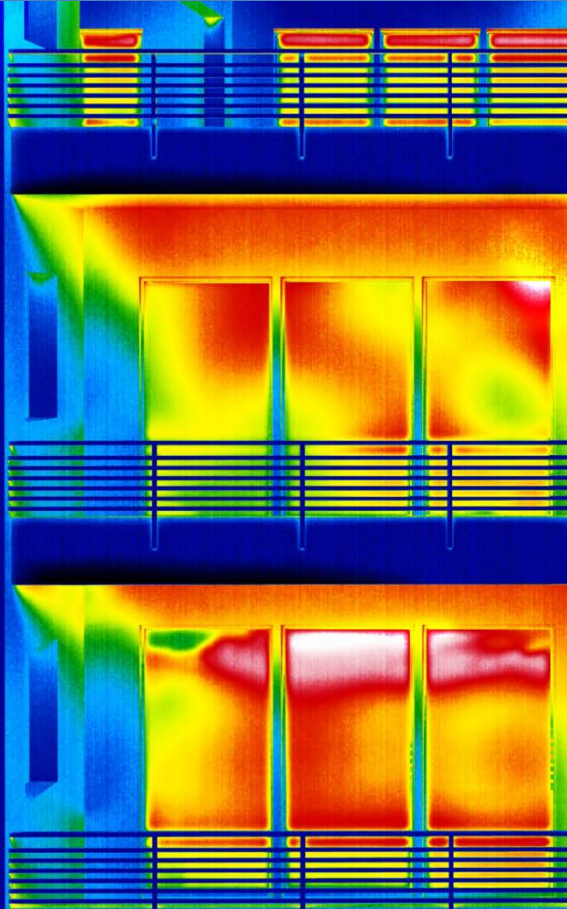
**24% of global CO<sub>2</sub> emissions**

**10% of global GDP**

**5-10% of national employment**

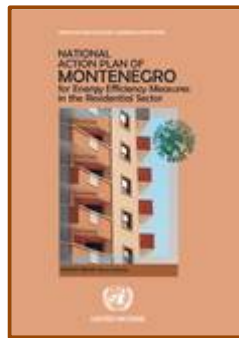


**Energy  
efficiency is  
the greatest  
energy source**





**2010,  
UNECE Action Plan  
on Energy  
Efficiency**



**2012, National Action Plan of  
Montenegro for Energy  
Efficiency Measures in the  
Residential Sector**





# Workshop's Objectives

- Exchange of best practices on energy efficiency
- Discuss different aspects of energy efficiency
- Draw up recommendations for the main steps





# Format of the workshop

## Four panel discussions:

- Legislative and regulatory framework for energy efficient housing
- Financing for energy efficient housing
- Housing Management to Promote Energy Efficient Housing
- Technical and awareness raising measures



# Expected outcomes

- Report of the outcomes of the workshop
- Identified steps for national action plans on energy efficiency in the residential sector
- Identified potential topics and activities for the next Forum
- Identified potential topics and activities for the UNECE Committee on Housing and Land Management

