

10 Years of Single Window Implementation

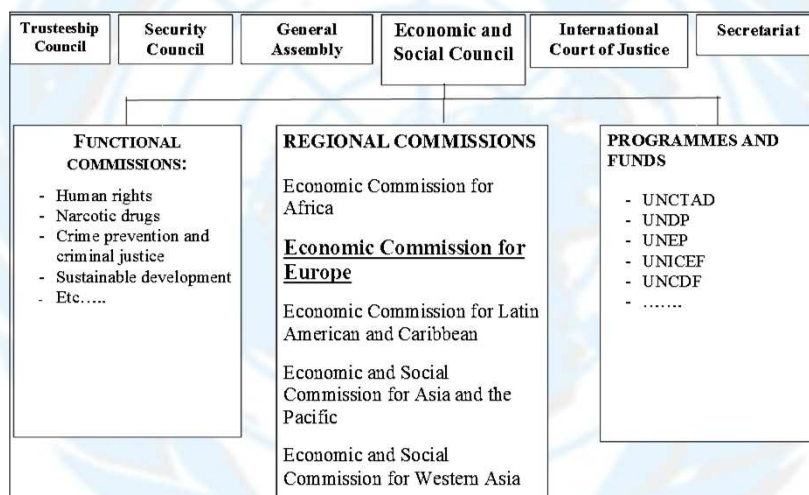
Where are we now
... and where are we going

Tom Butterly
Deputy Director, Trade Division
United Nations Economic Commission for Europe

WCO IT Conference
Dubai - May 2013

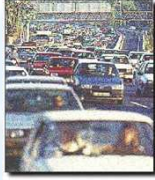
UNECE

UN Economic Commission for Europe (UNECE)



UNECE

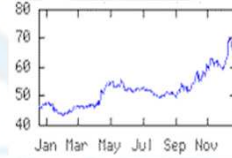
UNECE Work Areas



Transport



Economic cooperation



Statistics



**Sustainable
energy**



Housing



Trade



Environmental policy

UNECE

UN Centre for Trade Facilitation and Electronic Business (UN/CEFACT)

- ❑ Intergovernmental body for developing UN Trade Facilitation Recommendations and Standards
- ❑ Global Remit
- ❑ Over 300 Experts from all 5 Continents
- ❑ Recommendations approved by all UN member States

UNECE

Single Window History

- ❑ Development of the SW Recommendation 33 by UNECE - UN/CEFACT in 2004
- ❑ First SW Workshop 2004
- ❑ Retrospective Workshop in December 2011

UNECE

Single Window Basics: to enhance the efficient exchange of information between trade and government.

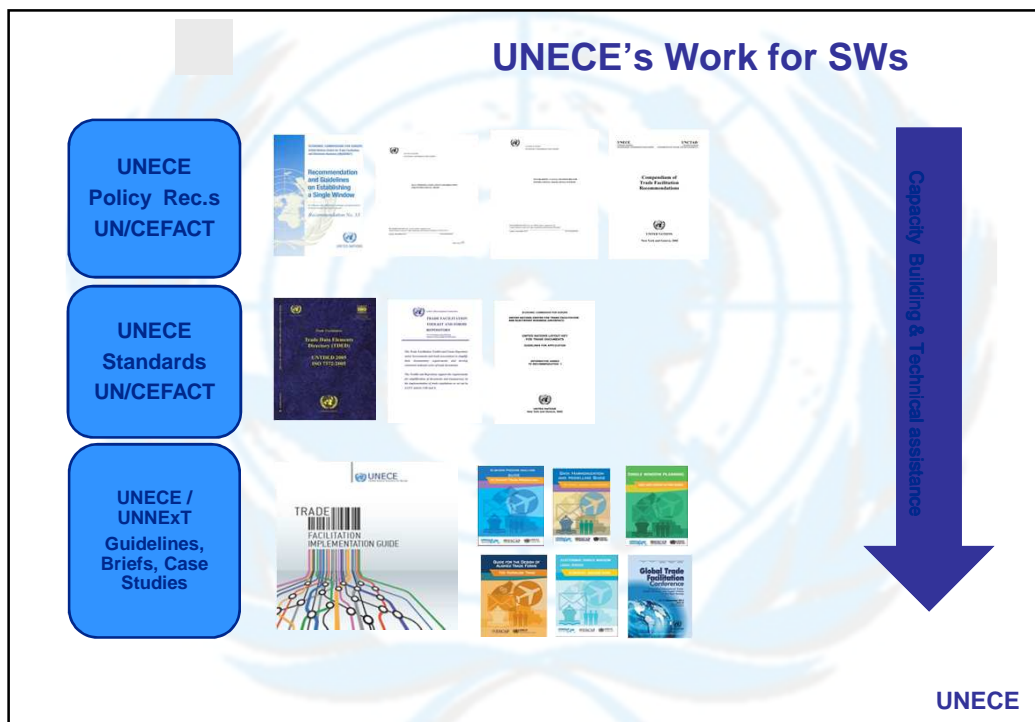
Single Window is a facility that allows parties involved in trade and transport to lodge standardized information and documents with a single entry point to fulfill all import, export, and transit-related **regulatory requirements**.

If information is electronic, then individual data elements should **only be submitted once**.

UN/CEFACT Recommendation and Guidelines
on establishing a Single Window, UNECE, 2005

http://www.unece.org/cefact/recommendations/rec33/rec33_ecetrd352_e.pdf

UNECE



After 10 years, some observations

- ❑ SW concept has seen an astonishing success – now established in over 71 countries
- ❑ SWs have become a strategic national instruments to facilitate trade, enhance collaboration between trade related government agencies, and increase export competitiveness
- ❑ More common in developing economies than developed economies
- ❑ Interoperability a major challenge

UNECE

More observations

□ One size does not fit all

- there are many different **Regulatory SW models** & approaches, e.g.
 - e-Customs, Customs-oriented Single Window
 - Trade (and Cargo) oriented regulatory Single Window - OGAs
 - Transport-oriented regulatory Single Window, e.g. EU e-Maritime or Maritime SW

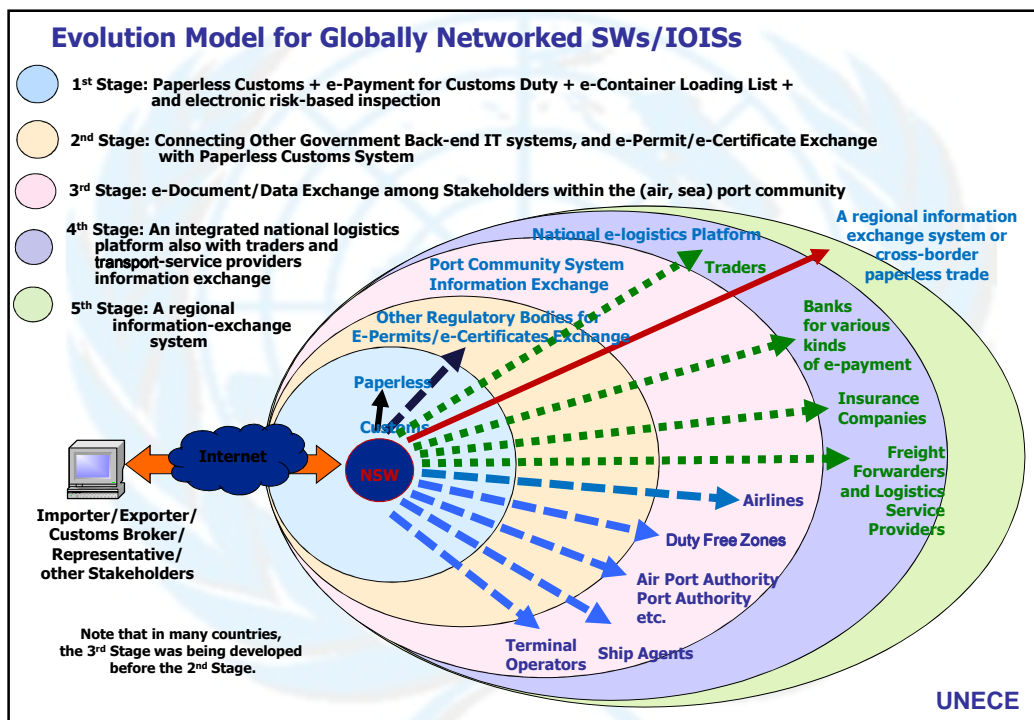
□ Different models (logistics) other than regulatory-oriented SWs

- Port Community Systems (PCSs)
- eFreight
- eCommerce/eTrade, etc.

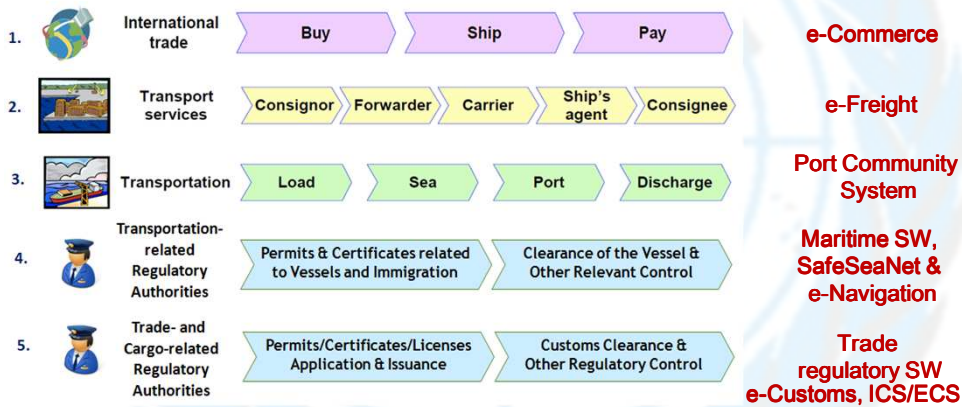
□ Possibility of many “Single” Windows in one country

Interoperability a major challenge –both within country and especially between countries

UNECE



Different Inter-Organization Information Systems (IOISs)



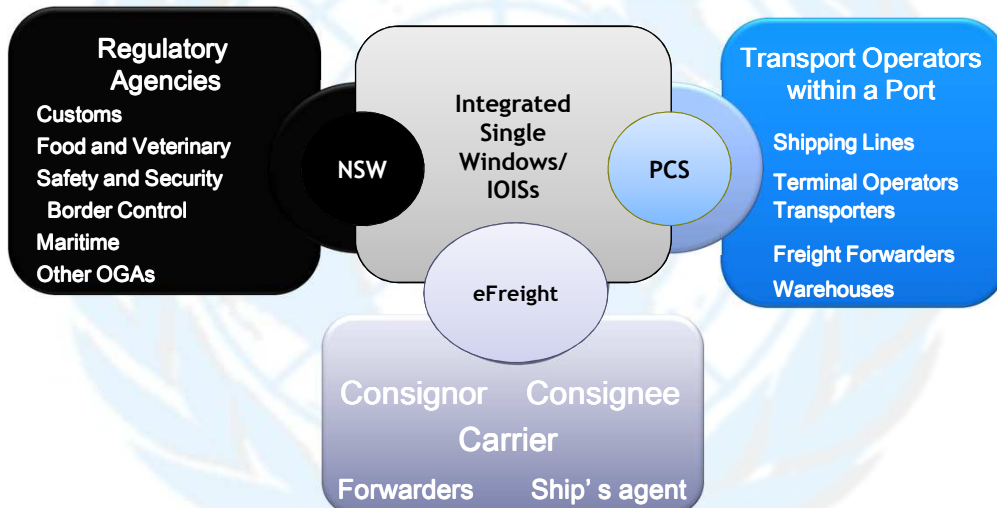
UNECE

Joining the pieces

Interoperability among those different Inter-Organization Information Systems (IOISs) has huge potential benefits, especially those involved with overlapping information among different IOISs along the international Supply Chain.

UNECE

Interoperability Scenarios between IOISs



PCS : Port Community System
NSW : National Single Windows

UNECE

Towards an Integrated SWs Strategy for the future

- ❑ **A Vision of Interoperability among “Single Windows”** - connectivity between different Inter-Organization Information Systems (IOISs) along the international Supply Chain: interdependency and synergies based on international standards and best practice
- ❑ **An information-sharing strategy** among IOISs in the supply chain to manage the challenges of the future (security, environment, sustainability)
- ❑ **Establishing a global repository** collecting & publishing information about e-services, data formats, rules, contacts, etc.
- ❑ Consideration of how the **“single entry point”** concept can be facilitated in a multi “Single Windows/IOISs” environment

UNECE

Towards an Integrated SWs Strategy for the future

- ❑ Legal framework
- ❑ service level agreements
- ❑ a framework for trust
- ❑ accessibility for SMEs and developing countries
- ❑ increased security, efficiency and environment protection through better sharing and reuse of information
- ❑ Documents/messages/data pipelines/WCO Data Model

UNECE

UNECE-UN/CEFACT on Single Window Interoperability

- ❑ UN/CEFACT currently working on UNECE Recommendation 36: Single Window Interoperability
- ❑ Also developing (in collaboration with UNCITRAL) a revision of Recommendation 14 (Authentication of Trade Documents by Means Other than Signature)
- ❑ Possible development of Rec for interoperability between data exchange systems in Domestic and CB trade ??
- ❑ UNECE Symposium on SW Interoperability in 2014 ??
- ❑ You are most welcome to participate in these initiatives

UNECE

Follow-up

All UNECE and UN/CEFACT Recommendations, codes, standards and publications are available on our website at:

- www.unece.org/
- www.unece.org/trade
- www.unece.org/cefact/
- E-mail: tom.butterly@unece.org

UNECE

Thank You !
(Questions ?)

UNECE