



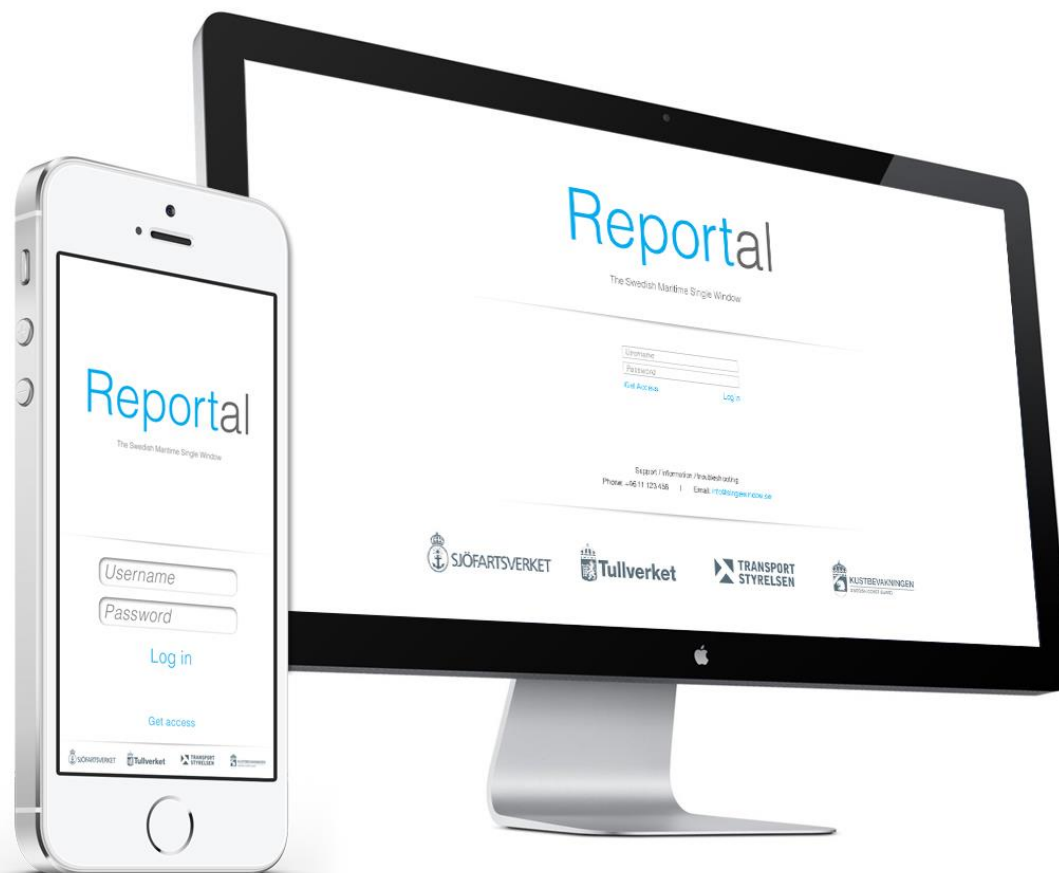
Maritime **Single** Window



Who am I

- Head of IT strategy and Architecture
- Represent Sweden in DTLF
- National expert in EMS group





Submit Discard ▶ Share ▶ Log

There are changes to submit

Ship

OSKAR

Current draught5 m Security level1 - Normal

▶ Additional Ship information

▼ Schedule

Port of call

SENRK - Norrköping

Next port

SEGOT - Göteborg

ETA

2014-04-29 12:00

ETD

2014-04-30 13:00

Will require pilotage upon

☐ Arrival ☐ Departure

▼ Crew

Crew arriving at Norrköping (0)

+ Add crew

☐ Different crew list on departure

↑ Upload list

▼ Passengers

Passengers arriving at Norrköping (0)

+ Add passenger

☐ Different passenger list on departure

↑ Upload list

▼ Health

▼ Cargo

Consignments to unload at Norrköping. This includes transit goods.

Göteborg ⇒ Norrköping

Goods

1. 12 Kg - Oil products

+ Add consignment

Consignments to load at Norrköping.

+ Add consignment

▼ Crew's effects

Crew's effects arriving at Norrköping.

1. 3 - kalle kula

+ Add crew

← Clear list

☐ Different crew's effect list on departure

▼ Store items

Store items arriving at Norrköping

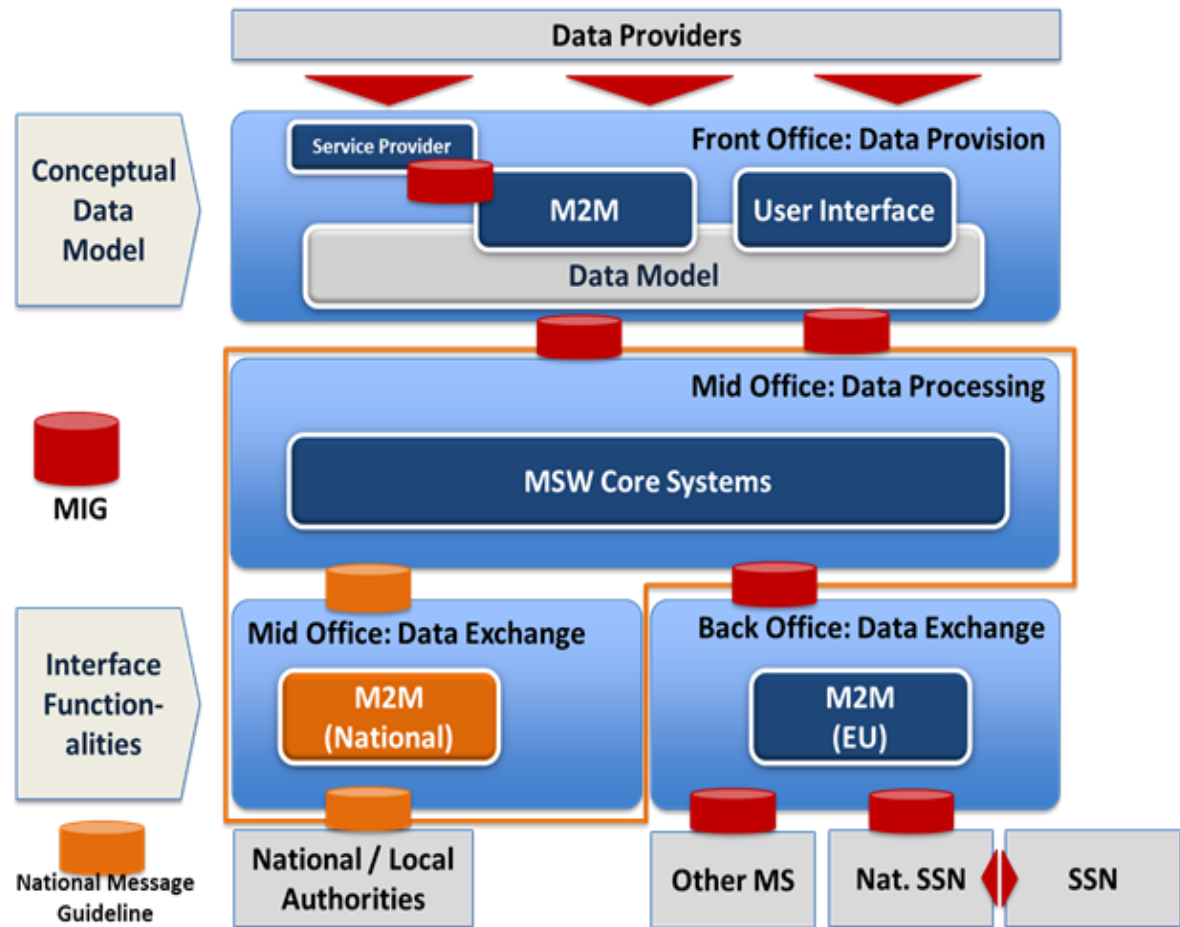
1. 12 - Cigarettes

2. 12 - Tobacco

3. 12 - Cigars

+ Add store item

Logical Architecture



The datamodel mapped to declaration types

MAI

NOA

NOD

PAX

HAZ

.....

The messages comes in 2 flavors



Current status

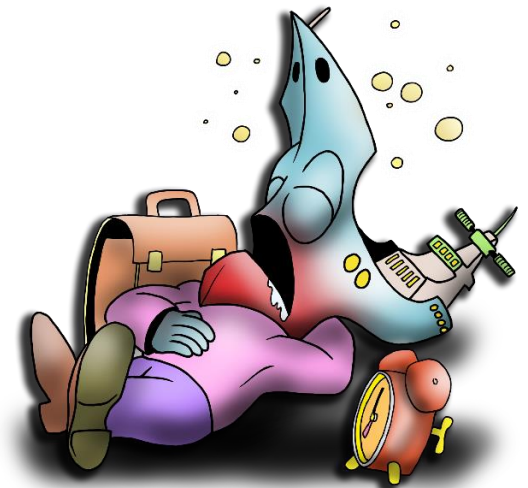
Production since 1/10 2015 (including port of gothenburg via PCS)

Coast guard joined as of March 2016

Customs join first of June 2016

Expand the MSW with Pilot ordering this autum

Expand the MSW with payment of fareway dues this autum



THANK YOU!

