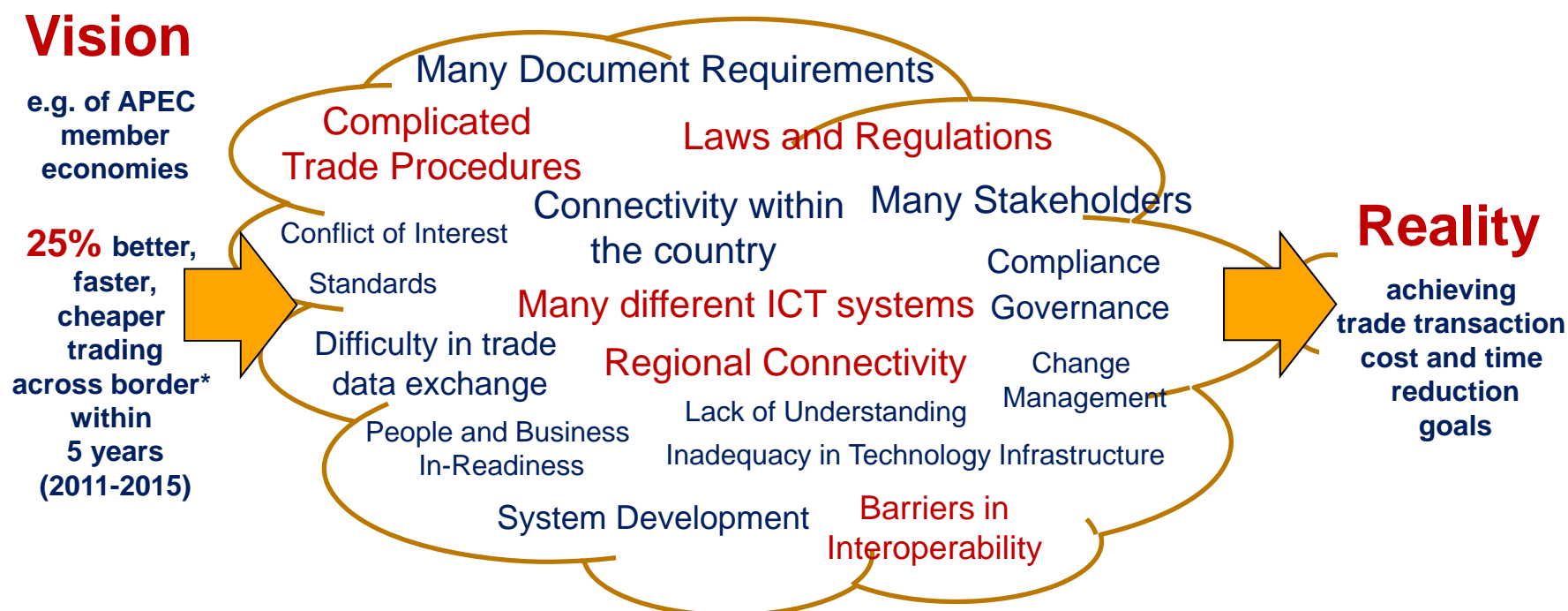


Single Window Implementation Framework (SWIF)

Why a holistic and systematic framework is needed?

**SW from the point of view of a policy maker:
There are so many challenges to be tackled**



* Referring to World Bank's Index (www.doingbusiness.org)

Learn from experience and from academia

Situation:

- Countries had considerable, systematic project planning and implementation issues (Sea-of-death, aborted takeoff,)
- Implementers had gained experience in large SW project implementation, completing 4 years of ITAIDE research

Objective:

- Guide to improve planning, increased transparency and governance, reduce projects risks and costs
- Focus on consensus building, objectives, planning, performance measurement for SW
- Interdisciplinary view: policy makers, implementers and academia
- Based on a tried managerial framework

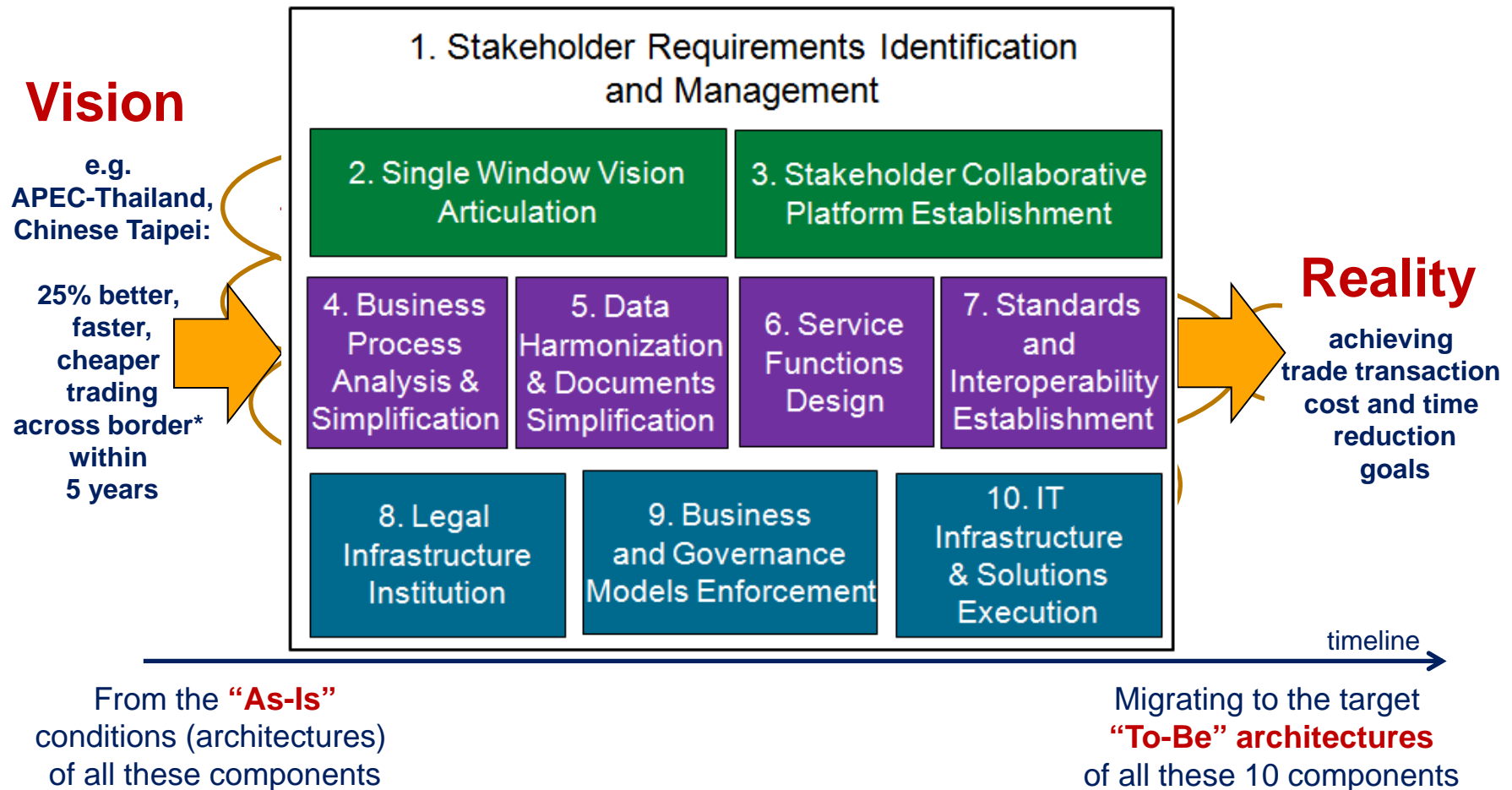
What is SWIF?

- SWIF is a **systematic architecture-based framework** to support the planning and Implementation of a Single Window
- SWIF adapts the concept of **enterprise architecture** and **development methodology*** to describe approaches on how to
 - systematically derive the **SW strategic architecture**,
 - formulate a **master plan**, and
 - guide the **implementation** of the project

* Adopted from the Open Group Architecture Framework (TOGAF), Architecture Development Method (ADM)

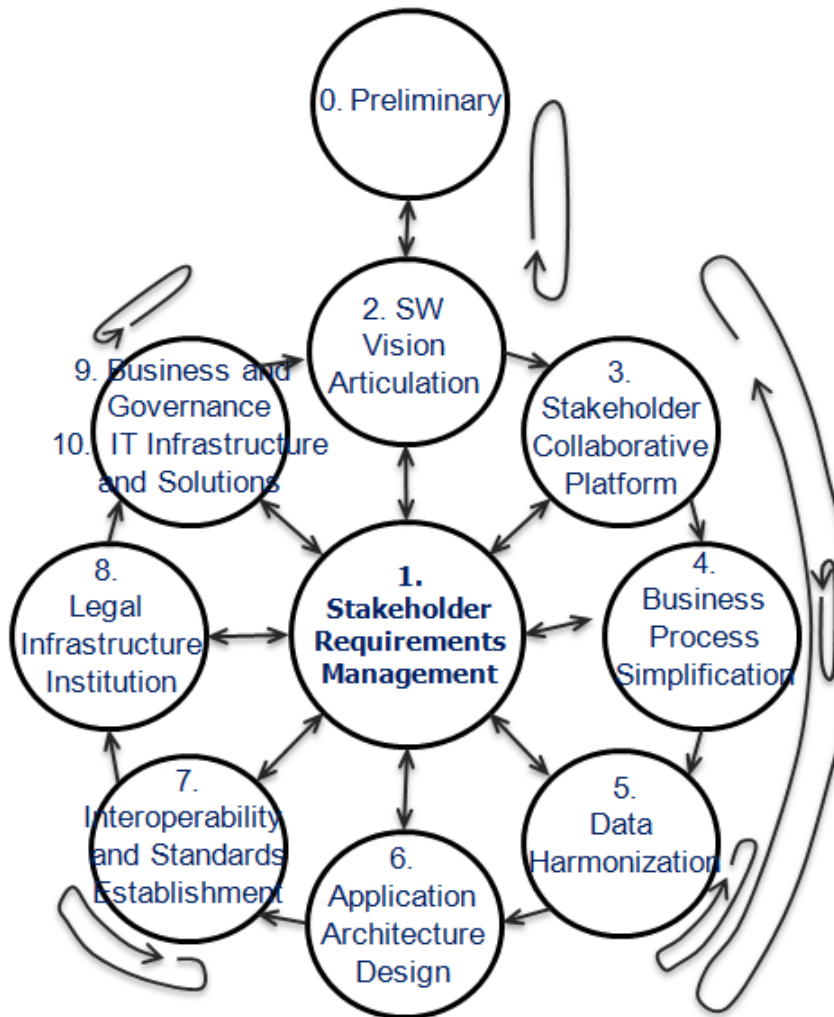
Complexity of Single Window can be handled by decomposing its challenges into smaller and more manageable sub-components.

Decomposing the SW challenges into ten key components



* Referring to World Bank's Index (www.doingbusiness.org)

SW Development Cycle





Components	Objectives	Activities	Deliverables/Expected Results
<p>2</p> <p>Single Window Vision Articulation</p>	<ul style="list-style-type: none"> • Create and articulate joint vision, goals and scope of Single Window • Secure the political will and necessary resources 	<ul style="list-style-type: none"> • Elaborate and refine broad vision, strategy, objectives, and goals of the Single Window • Define the scope of Single Window Implementation and constraints in terms of resources and competence availability • Define value proposition of the Single Window and demonstrate its relations to stakeholders priorities • Identify a set of key performance indicators that will serve as target quantitative goals to measure the success of the Single Window implementation • Develop a high level master plan that describes overarching strategies for the overall 	<ul style="list-style-type: none"> • A high-level project management group with key stakeholders established • An initial high level master plan that defines project components, activities and deliverables • Key performance indicators that measure project performance established • A high-level master plan approved • Top level mandate to develop a Single Window, for example, by a formal decision of Prime Minister, President or the Cabinet • Initial finding for funding project components secured

SWIF and use of standards

- SWIF integrates the application of standards into the project framework
 - When, where, how, for what, who?
 - Business Process Analysis
 - Data Analysis, Structure and Semantics
 - High level for project and policy managers
 - Specialised guides:



EPCSA Architecture Model

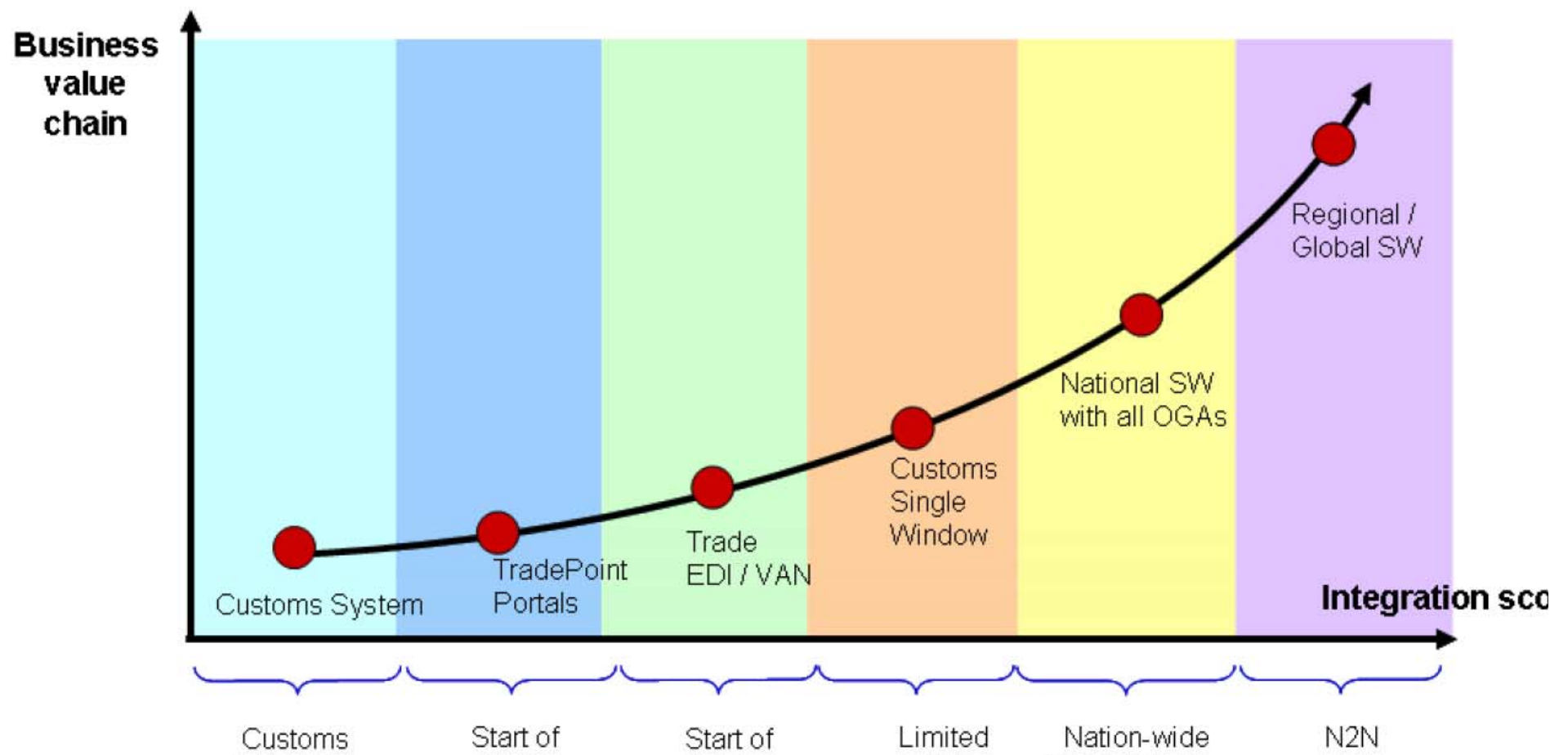


Experience made and follow up

- Managerial models for Inter-Organizational Information Systems (IOIS) were good fit to explain SW development
- A work programme is a bitter medicine (humans like to talk and dream, golden solution, ..)
- The objective is not SW but Trade Facilitation → objective driven SW development
- SW is about a process of improvement not about development of a system → Emphasis on policy aspects, change management, PKI, Trade Facilitation actions
- Evolution of SW: how do Customs systems, the different PCS, eGovernment systems, Logistics systems ,.. relate to a SW

From SWIF to SW evolution model

Figure 3 Evolution of Single Window development

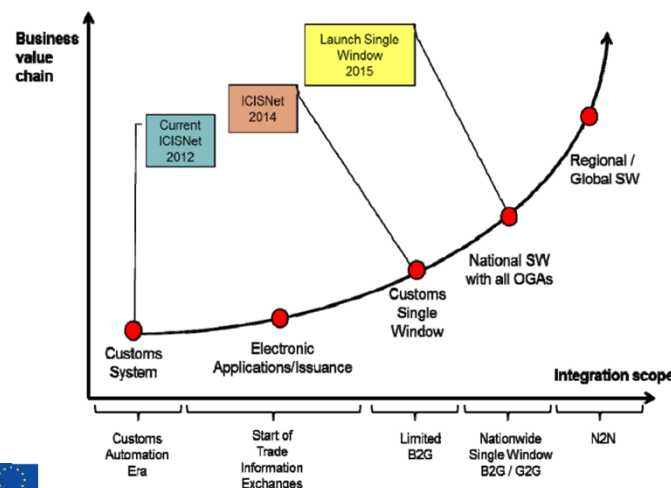
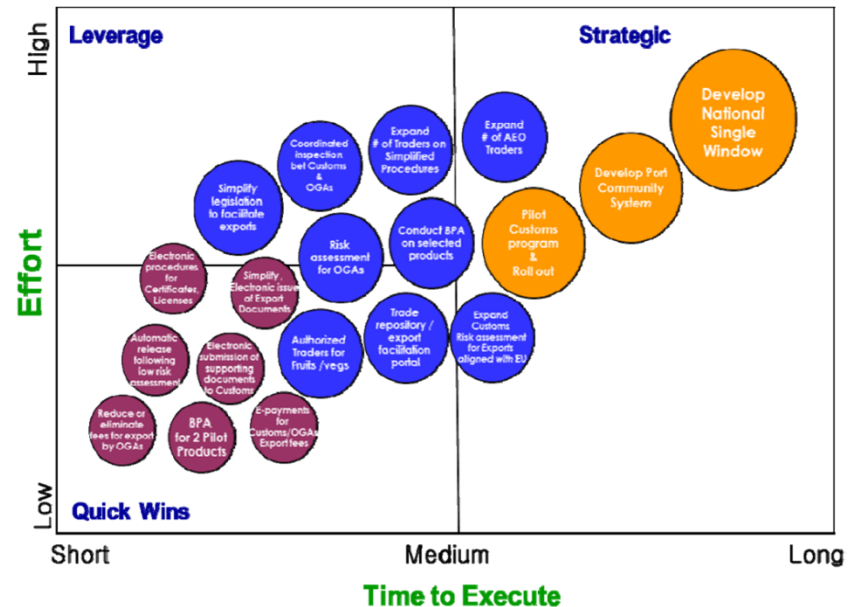




Example: Greek National Trade Facilitation Strategy (discussion paper)

Greek National Trade Facilitation Strategy: Projects and priorities

SW development:



An integrated Trade Facilitation Strategy for Greece including Single Window, 19-20 July 2012, Athens, Greece

Questions

SWIF and SW evolution model lead to a number of questions:

- What is the role of IOIS* (PCIs, eLogistics platforms, eCustoms, eGovernance, eMaritime, ..) for facilitation of global supply chains
- How do these systems relate to SW: are they linked to a SW, do they add up to a SW, is the SW the gap between these systems?
- If a country has a complex IOIS ecosystem, does it still need a SW? If so, how would that SW look like? Or is the IOIS ecosystem the SW?
- “Single Window” equal “one”. Can it be two? Can it be zero (i.e. can it be a “Single Window environment”)?
- Impact and opportunities of IOIS on SMEs capability for Cross Border Trade

What is a “Single Window” and how does it relate to the other information systems of global trade?

Thank you

Markus Pikart, United Nations

Markus.Pikart@unece.org



Credits and materials:

Somnuk Keretho, PhD

Institute for IT Innovation, Kasetsart University, Bangkok

sk@ku-inova.org

Single Window Planning and Implementation Guide

<http://www.unescap.org/tid/unnext/tools/implement-guide.asp>

