



# Rapid Alerts

previously

## Rapid Alert System for Food and Feed Safety

**28th CEFAC FORUM**  
**Bangkok**  
**September 26-30, 2016**

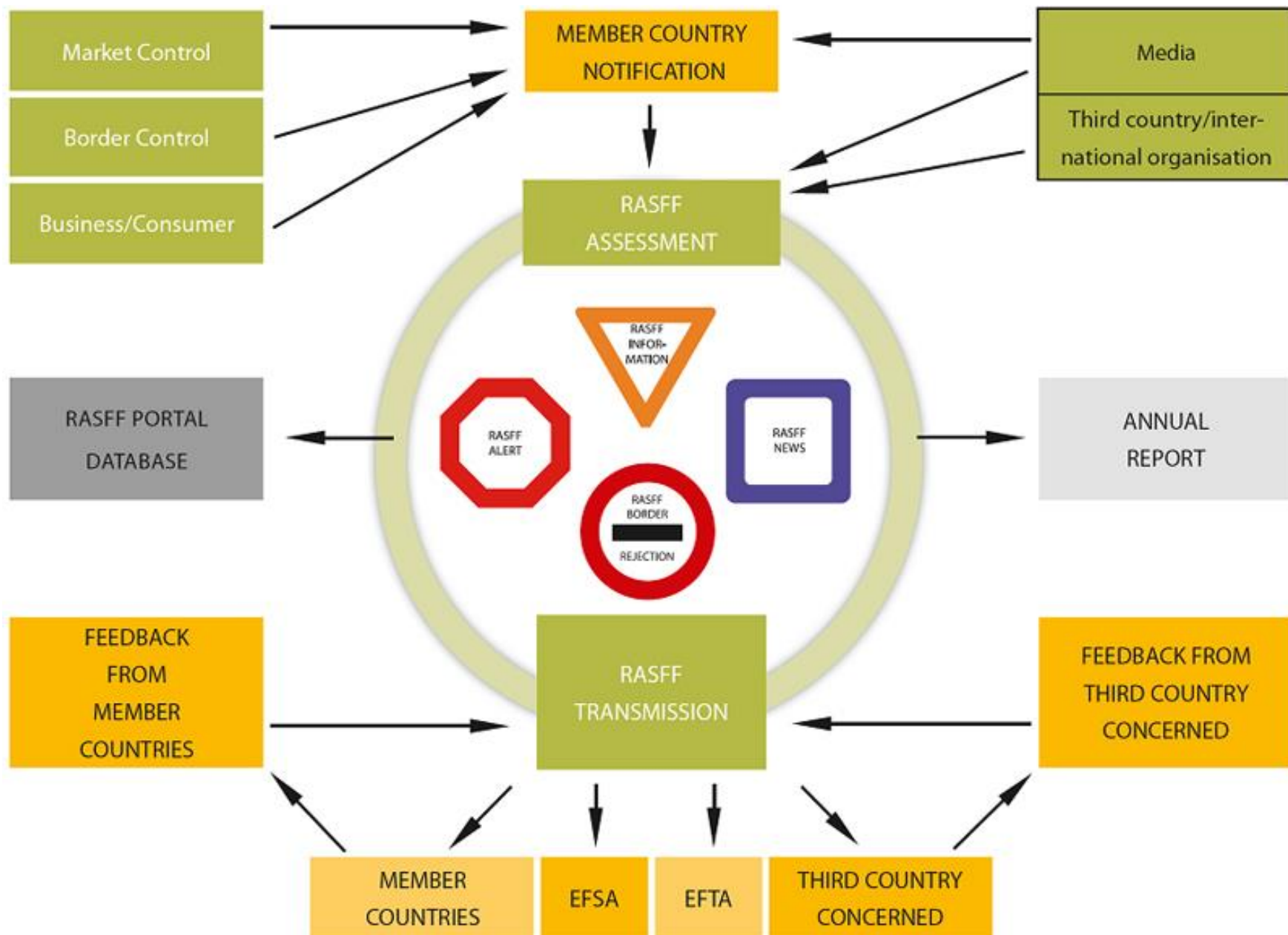
# Introduction

- *Current RASFF System*
- *CEFACT Implementation*
- *Network exchanges and collaboration proposal*
- *Other domains and synergies*
- *Planning*

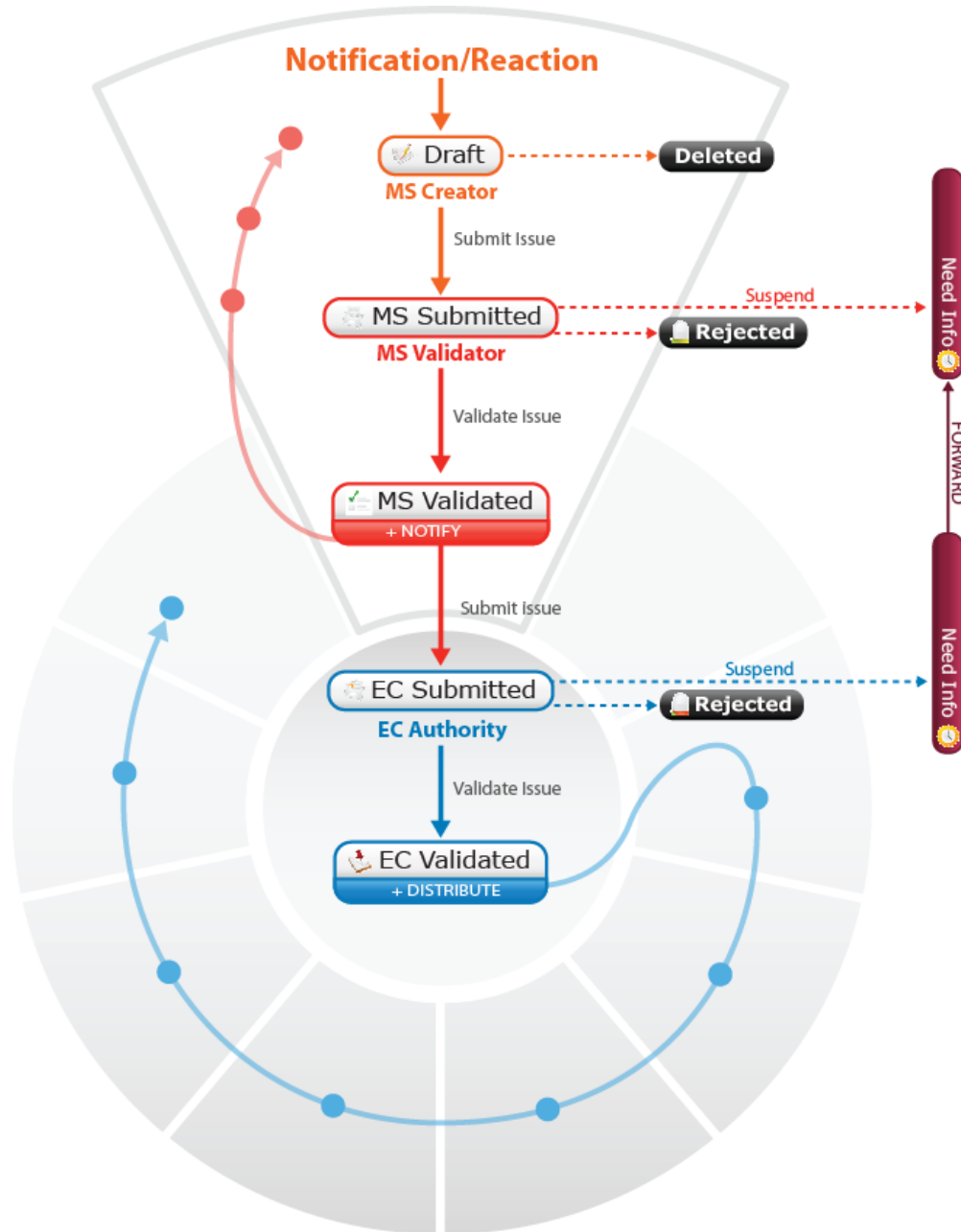
# The RASFF System

- *System:*
  - **Network (organisations)**
  - **IS (IT Tool)**
- *Participants*
  - **Food & Feed authorities**
  - **Central Authorities**
- *Exchange on*
  - **Incidents and cases**
  - **Controls**
  - **Measures taken**

# The RASFF system in practice



# The RASFF workflow – a standard case

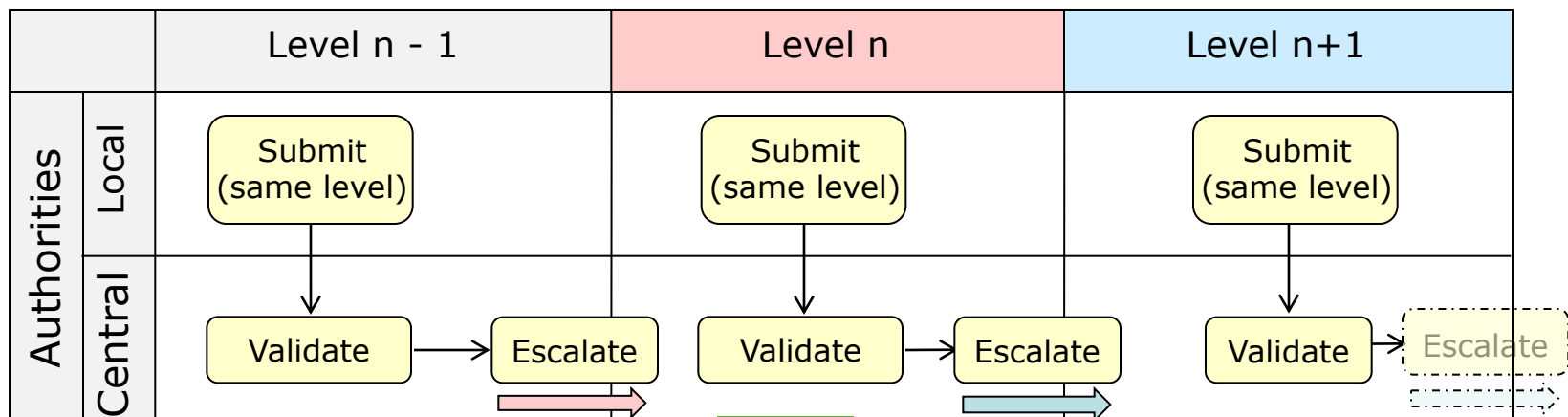




European  
Commission

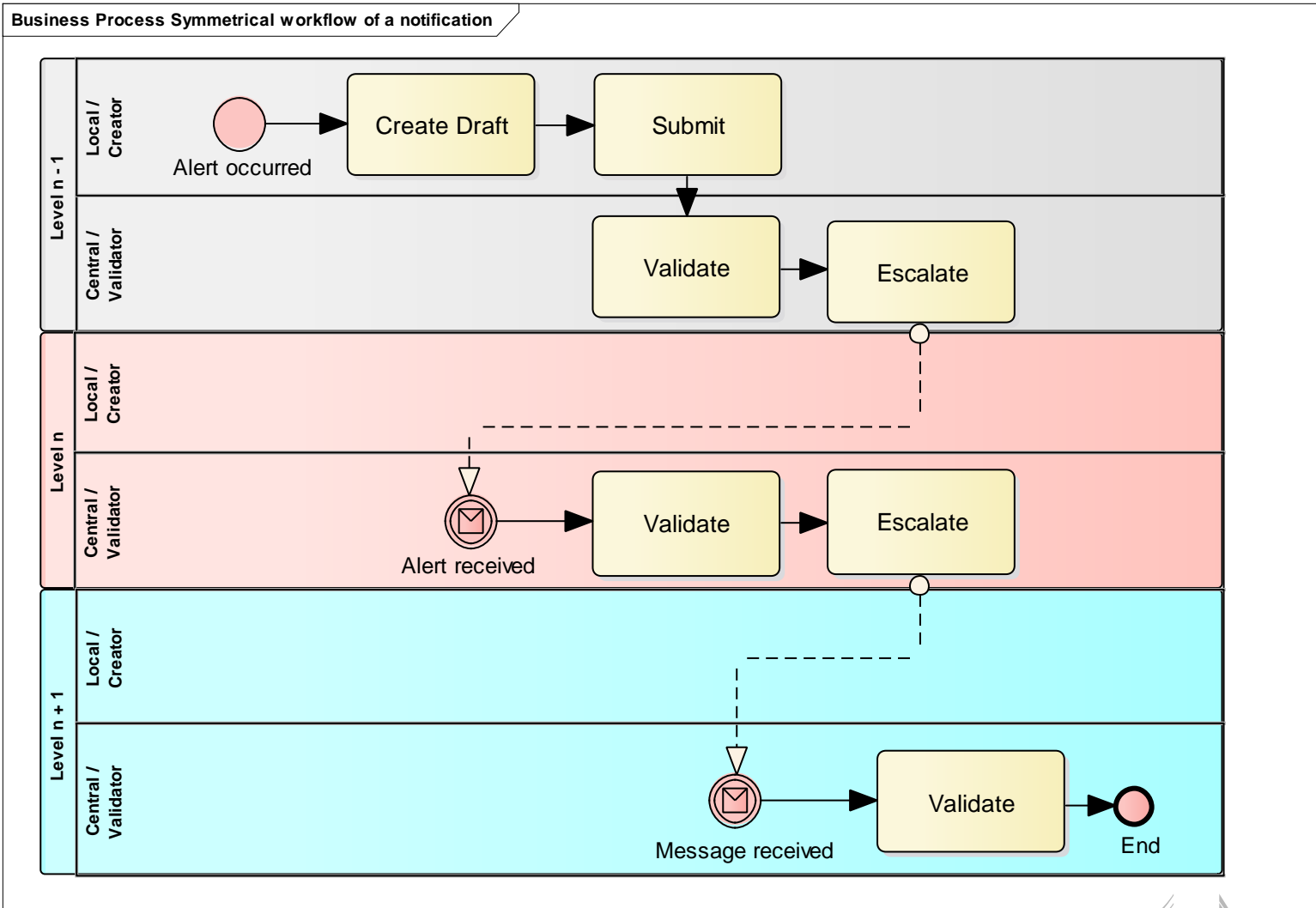
# RASFF Level and organizations

- The notification flows involve different organizations and levels.
- In typical scenarios, 3 levels are involved for the exchanges:
  - **Level n-1, level n and level n+1, but more levels could be used.**
- Key roles for each level:
  - **Local/Creator:** Authorities typically creating and submitting the notifications to their Central Authorities
  - **Central/Validator:** Authorities validating these notifications and escalating them to the Central Authorities at the next level



# RASFF Operation Across Levels

*Symmetrical model for all levels*



# Current CEFACT model

- *Specification of the workflows for the different levels*
- *Four levels are assumed, but there is no limit in the levels number*
- *Intended for use by authorities*
- *Collaboration model*



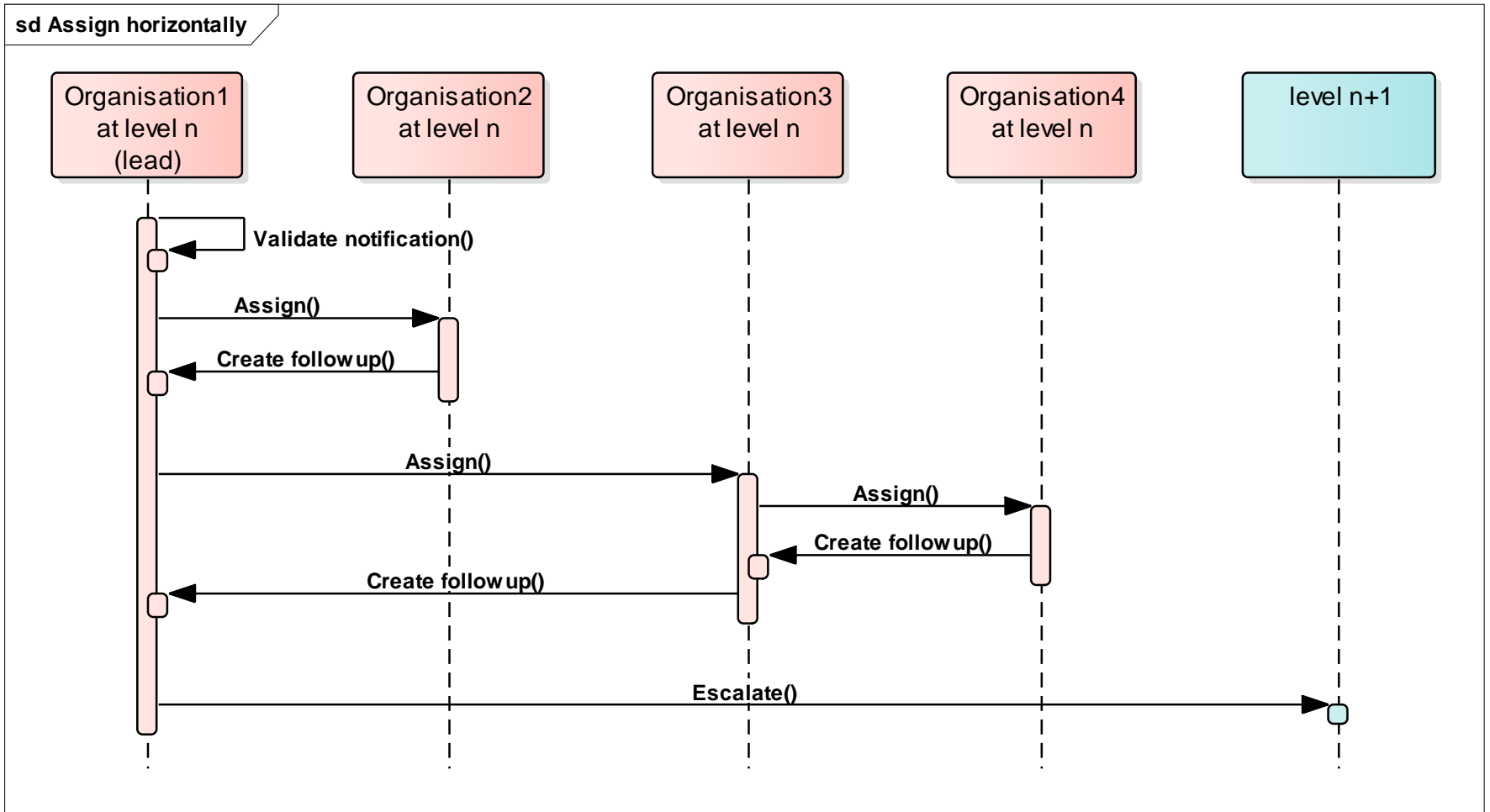
# Collaboration model

- *The collaboration currently flows hierarchically, unless the notification / alert has been validated at the top level, lower levels cannot see it*
- *Proposal of a new model is proposed allowing*
  - Collaboration within a level
  - Collaboration across levels

The alert contents remain the same, but new messages are created between the collaborating entities

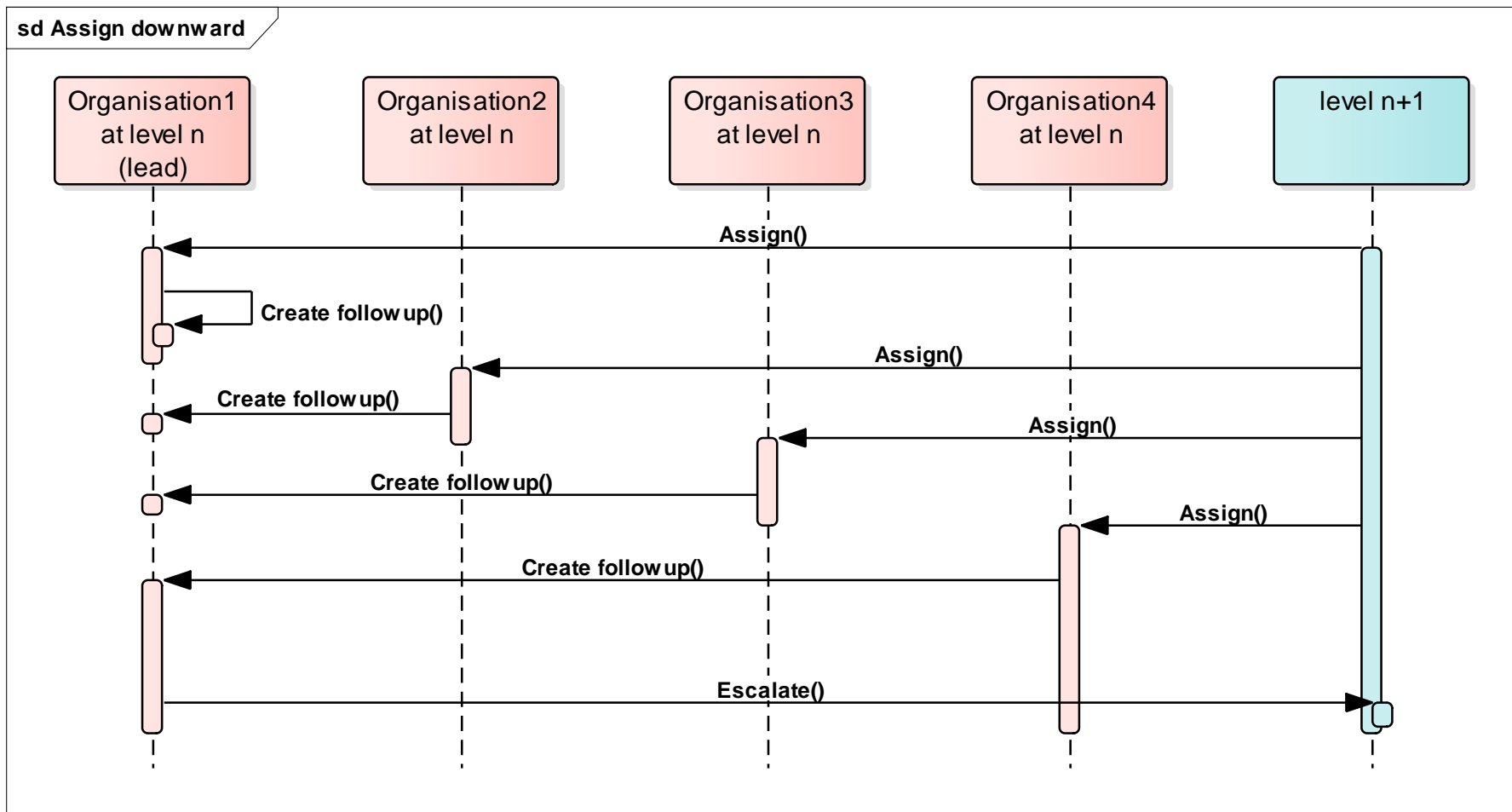
# Collaboration model

## Collaboration within a level



# Collaboration model

## Collaboration across levels



# Proposal for extension of RASFF

## *Short term*

- **Launch project to improve**
  - Data content / component model
  - Message exchanges
  - Alignment with Agriculture domain projects
  - Use case model
  - Terminology (more general terms are needed)
- **At the end of the activity we plan to propose implementation guidelines**

## *Long term*

- **Launch project for other domains**

# Component model

- *The current component model assumes that all information is sent at once*
- *Introduce independent notions of*
  - Product
  - Consignment
  - Other info
    - Risks / Hazards
    - Constraints in breach (legislation, common practices, other)
  - Decompose message to smaller messages depending on
    - Use cases / basic message exchanges
    - Contents changes / requests

## Targeted parties & exchanges

- *Currently the model only addresses Government-to-Government communication and collaboration*
- *Exchanges to be addressed in the future:*
  - Business-to-Government
  - Government-to-Business
  - Business-to-Business

# Synergies with agriculture projects

- *Track and Trace*
  - Transformations / processing and transportation
  - Key messages
- *e-Labs*
  - Laboratory analysis & results
  - Key messages
- *e-Crops*
  - Primary products, pesticides treatment
  - Key messages

# Synergies with agriculture projects

- *Develop common controlled lists*
  - **Product processing & transformation / transportation**
  - **Analysis parameters / sampling etc..**
  - **Services:** discovery, updates, sync...
  - A model for **reusing control lists** and simplifying evolution is needed
  - FLUX characteristics as an inspiration / model to follow



## New General model

- *Networks with members can be created for different domains*
- *The model does not address how a network operates, only message types and content are addressed by the new model*
- *Network members /parties can send/receive all message types*
- *Associated Parties can participate on a more limited number of exchanges*
- *All parties can provide information on request*

## New General model (cont.)

- *Alerts and collaboration on following domains:*
  - **Food safety and food chain**
  - **e-Commerce,**
  - **textiles (?),**
  - **e-Cert,**
  - **import inspections,**
  - **...**

# Planning proposal

- *29<sup>th</sup> CEFACT (Spring 2017)*
  - **Collaboration elements**
    - New collaborative model approved
    - New component model approved
    - Draft implementation guidelines
  - **Rapid Alert and Collaboration Network**
    - Explore interest and support by delegations
    - Launch collaboration with other domains
    - Initial BRS proposal
- *30<sup>th</sup> CEFACT (Autumn 2017)*
  - Approved BRS / RSM for the Rapid Alert and Collaboration Network



European  
Commission

**Thank you**

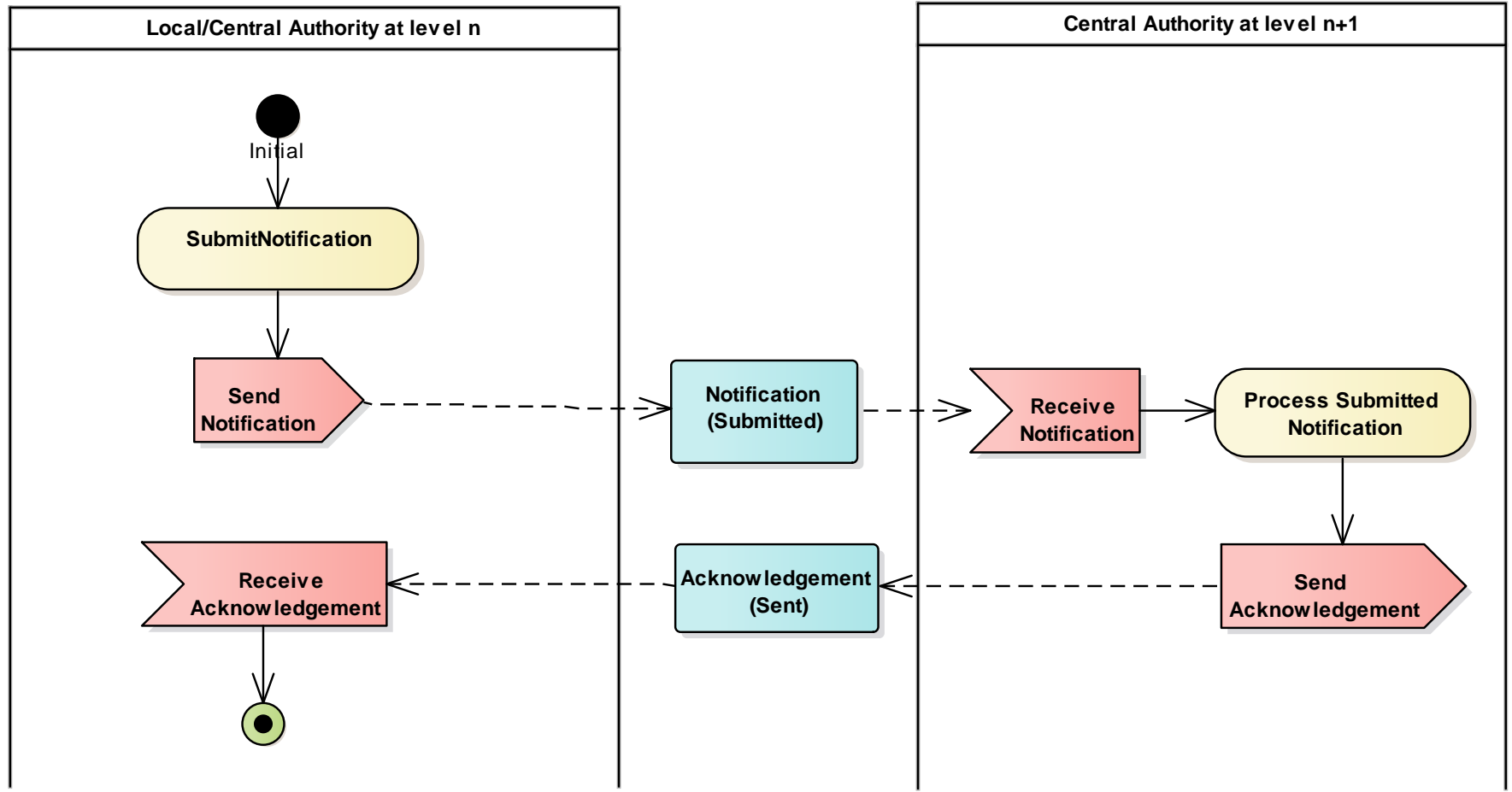


# Annex

# Business transaction (activity diagram)

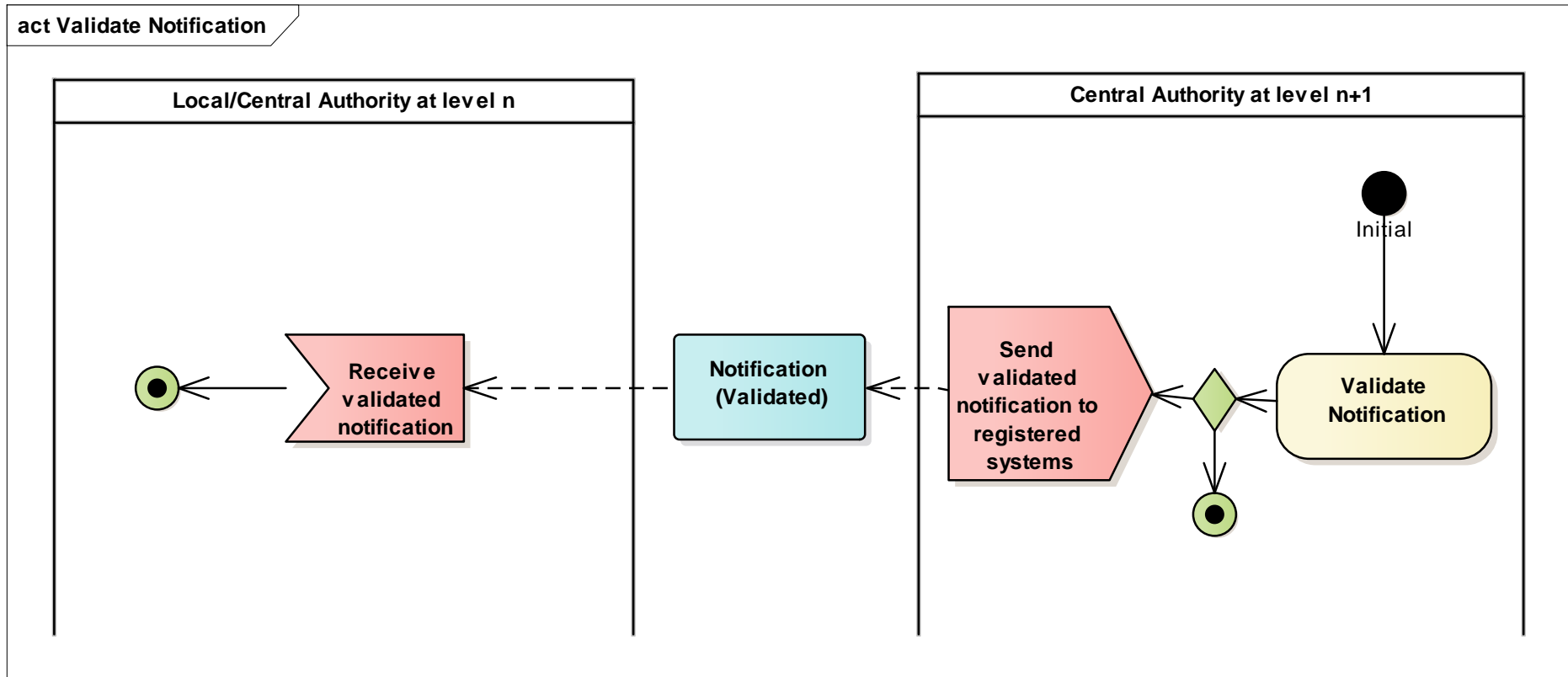
## Submit Notification

act Submit Notification



# Business transaction (activity diagram)

## Validate Submitted Notification



# Business transaction (activity diagram)

Query notification [Read]

act Query Notification

