

# Overview of Travel/Tourism Domain Activities

27<sup>th</sup> ~31<sup>st</sup> , March, 2017

T/T Domain Acting Coordinator

Akio Suzuki

# PDA Sectoral Domain 28<sup>th</sup> T/T Domain Minutes

Domain Coordinator:  
Akio Suzuki (Acting)

Project Leaders:  
SLH Process Project: Akio Suzuki  
DTI Process Project: Giljun Ko

# 28<sup>th</sup> Minutes

## Activities done during the week

1. We checked the present development status of SLH (Small scaled Lodging House) related systems for the International Pilot Project.
  - Global-hub system and SLH reservation systems of participating countries
2. Contemplating DTI (Destination Travel Information) related standard development process.
  - We talked on the role of each participating country.
3. Based on Indian and Japanese experiences, discussed what is Experience Program and how it will help regional Vitalization /Revitalization, and reached to understanding as in the following.
  - An Experience Program > Theme Programs> Activities > (define Properties)
  - Vitalization/ Revitalization of regions could be serviced by the output of T/T Domain work through SLH, DTI & 'Experience Program' projects ( the last of which will be coming out in the future).
4. We held the Mini-Conference on T/T Domain and got a number of comments from the audience.
  - We reviewed and decided to take for further contemplation what have been commented at the Conference.

# 28<sup>th</sup> Minutes

## Preparation for the coming work

### 1. Executive Guide

We decided to work for the guide to give what we have been working in SLH, DTI projects, etc.

### 2. Green Paper

We talked on the Paper and will summarize in it what we intend to work out through SLH, DTI and future 'Experience Program'.

### 3. AFACT Tokyo Meeting

As AFACT Plenary will be held in Tokyo in November, we talked on it and decided to contemplate further on SLH International Pilot Project, DTI, etc., taking the working results of UNCEFACT Forum in Bangkok.

# 29<sup>th</sup> T/T Domain Meeting Agenda

Agenda provided approval and some other topics as in the following

1) 27<sup>th</sup> March(Mon.)

Mini-Conference attendance on RDM

2) 28<sup>th</sup> March(Tue.)

Con-Call with Mr. G. Ko Scheduled

3) 29<sup>th</sup> March(Wed.)

Con-Call with Mr. N. Meetham

4) 30<sup>th</sup> March(Thu.) by noon

Closing Slides Submission

Discussion with Mr. Harm Jan van Burg, Vice Chair, and Dr. Lance Thompson, Chair

5) 31<sup>st</sup> March(Fri.)

Closing Session

# Japanese Travel/Tourism Domain Activities into the Future

Original drawing by Hotta  
2017-3-27

Starting from SLH Process Standardization

- A large number of SLHs exist globally.
- Each property is usually located in a local area and owned by a private owner.
- It is smaller in scale, but has multiple internal and local information for service to guests.

**Coordinating with local revitalization programs**

- Agriculture, fishery, forestry promotion programs
- Manufacturing promotion programs
- Healthcare promotion programs, etc.

**Integrating multiple information and travel products**

- Restaurants, Transportation, Events, etc.

**UN standardizing process (Seeds side)**

**SLH/DTI process projects**

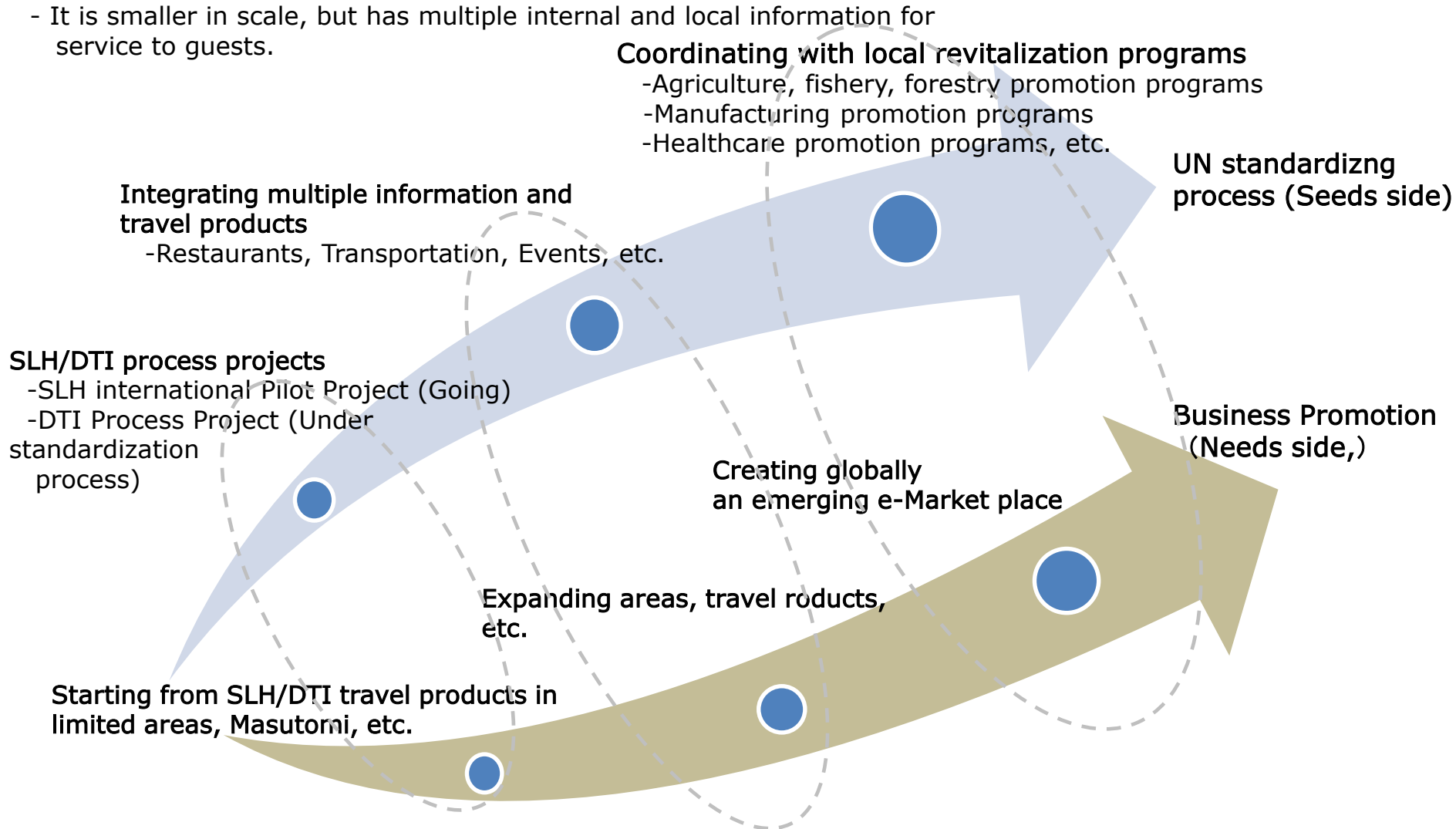
- SLH international Pilot Project (Going)
- DTI Process Project (Under standardization process)

**Creating globally an emerging e-Market place**

**Business Promotion (Needs side,)**

**Expanding areas, travel products, etc.**

**Starting from SLH/DTI travel products in limited areas, Masutomi, etc.**



# Outputs of SLH&DTI Standardization

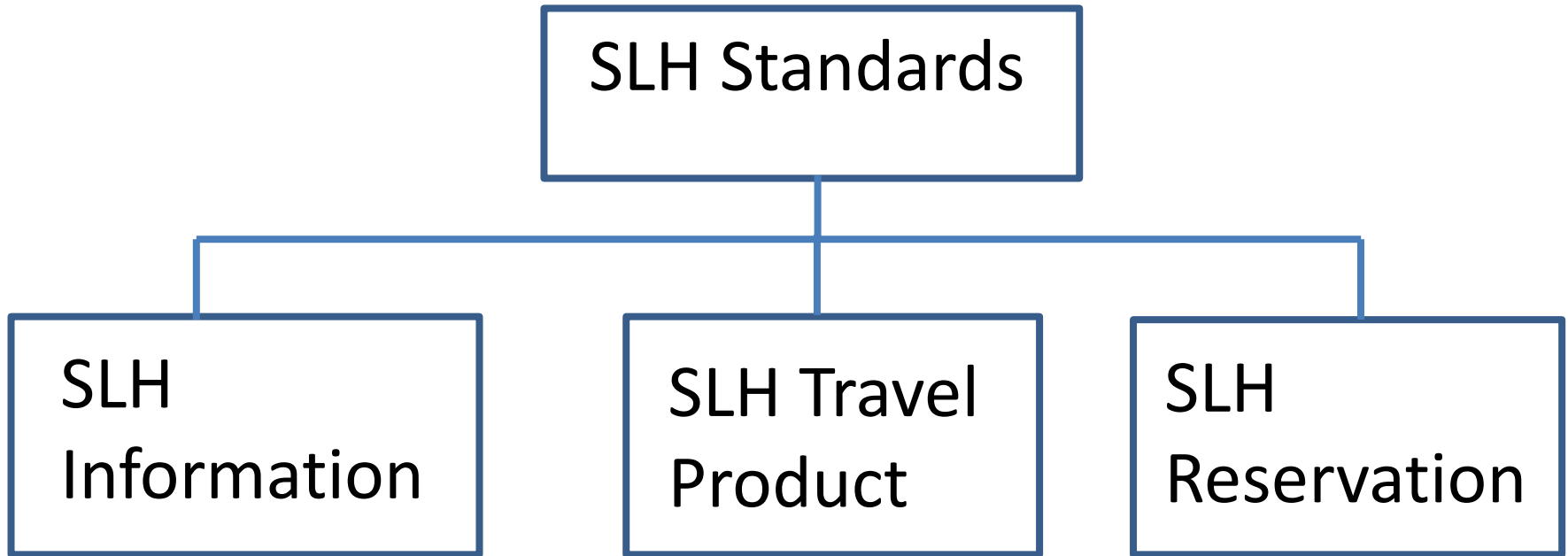
<b>Outputs</b>	<b>SLH Information Project</b>	<b>SLH Travel Product Project</b>	<b>SLH Reservation Project</b>	<b>DTI Project</b>
<b>BRS</b>	<b>Done</b>	<b>Done</b>	<b>Done</b>	<b>Done(Review needed)</b>
<b>RSM(CC,BIE)</b>	<b>Done</b>	<b>Done</b>	<b>Done</b>	<b>Not yet</b>
<b>Schema</b>	<b>Done</b>	<b>Done</b>	<b>Done</b>	<b>Not yet</b>
<b>Code List</b>	<b>Partly Done</b>	<b>Partly Done</b>	<b>Partly Done</b>	<b>Not yet</b>
<b>Publish in Forum Web Site</b>	<b>Done</b>	<b>Done</b>	<b>Done</b>	<b>Not yet</b>
<b>2<sup>nd</sup> Stage International Pilot Project</b>	<b>Going</b>	<b>Going</b>	<b>Going</b>	<b>Not yet</b>
<b>Implementation Guide</b>	<b>Not yet</b>	<b>Not yet</b>	<b>Not yet</b>	<b>Not yet</b>

# Standard Document Developed Date

	SLH Information P045	SLH Travel Product P095	SLH Reservation P106	DTI P1009
BRS	V1.0 (2006, Sep.06)	V1.0 (2009, Mar.03)	V1.0 (2012, Jun.04) V1.6 (2012 Oct.12)	V1.0 (2014 May25)
RSM	V1.0 (2007, Sep.12 V1.4 (2013, Apr.28	V1.0 (2009, May12) V1.5 (2012 Oct. 03)	V1.0 (2012 Nov.01) V1.0.2 (2013 Jan.17)	Not yet
Schema	2013, Feb.25	2013, Feb.25	done	Not yet
MSG Structure	2013, Apr.28	2012,Nov. 05)	2013 Jan 18	Not yet
Project Proposed	2004, May18 (Approved)	2004, Sep.13 2010, Feb.07 (Resubmitted)	2004, Sep. 13 2010, Feb. 07 (Resubmitted)	
Exit	2007, Sep.12	2009, May12	2012, Nov.01	
CC&BIE Library	2007B	2009A	2012B	



# SLH Standards



**Information on SLH property and its owner request and response**

**Information on SLH travel products and their sales condition request and response**

**Information on making reservation, amendment, cancellation, etc. of SLH request and response**

# Use Case Diagram

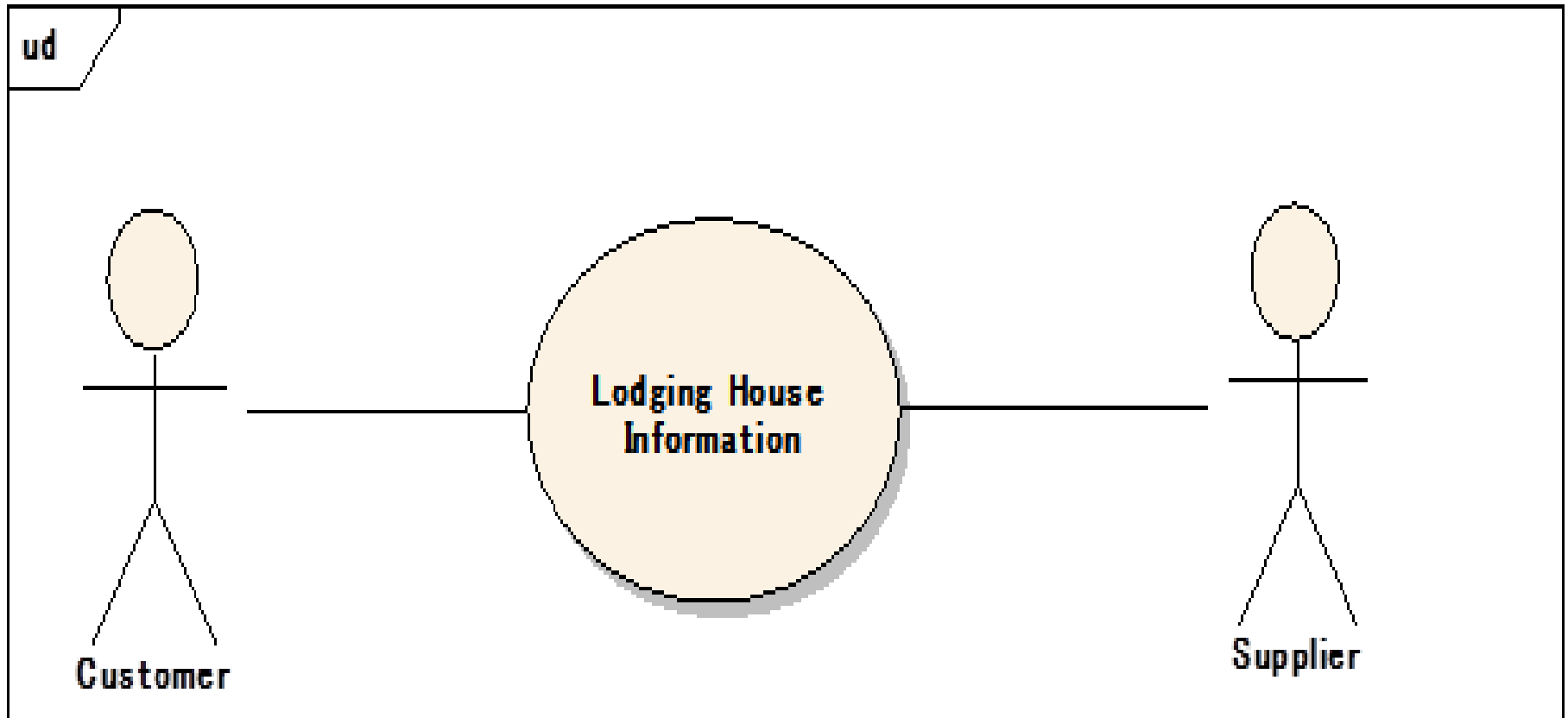


Figure 1 : Use Case Diagram : Lodging House Information

# Activity Diagram for SLH Information Request and Response

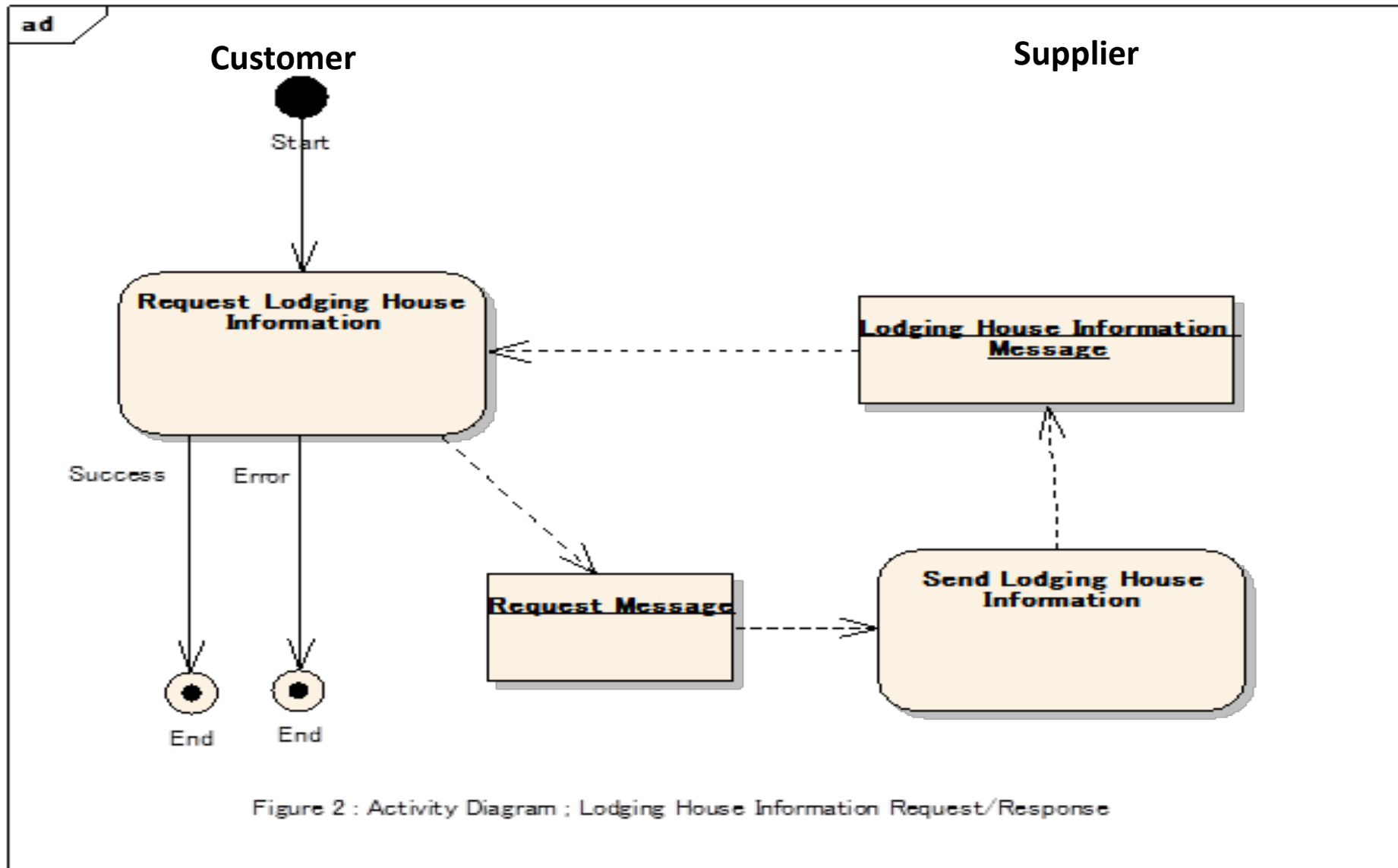
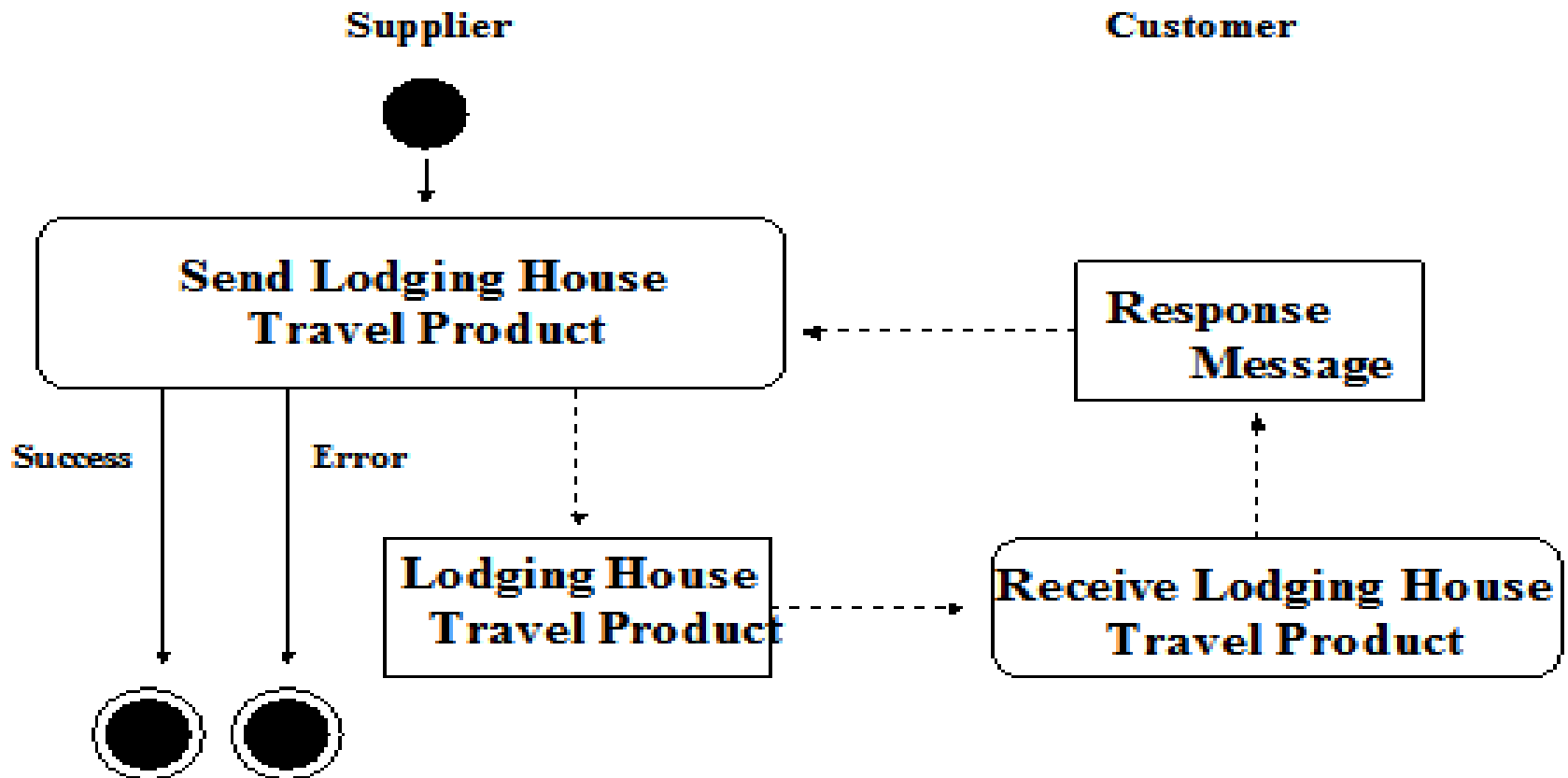


Figure 2 : Activity Diagram : Lodging House Information Request/Response

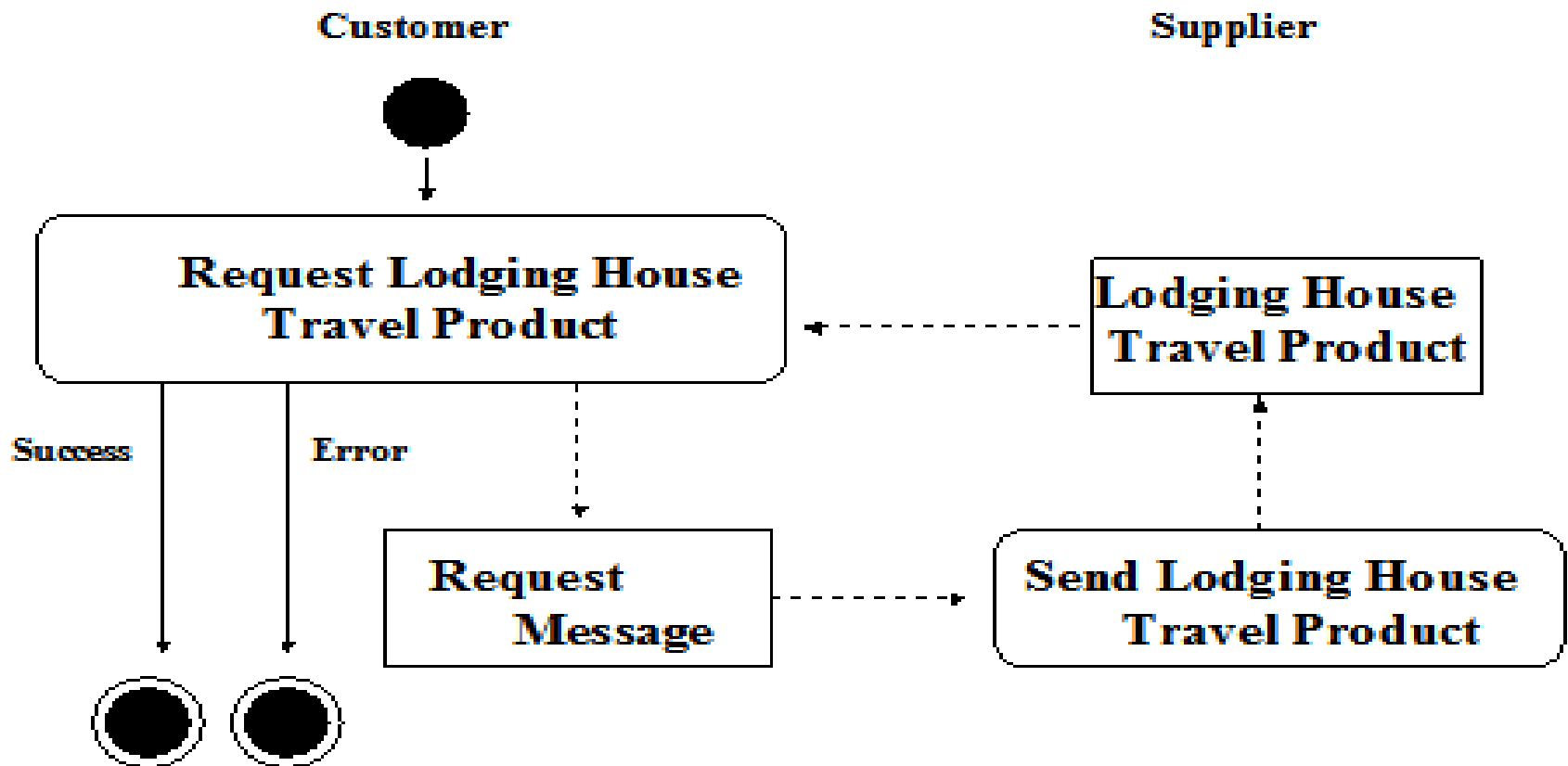
# Activity Diagram -Case1

**Activity Diagram (Lodging House Travel Product) —Case 1**



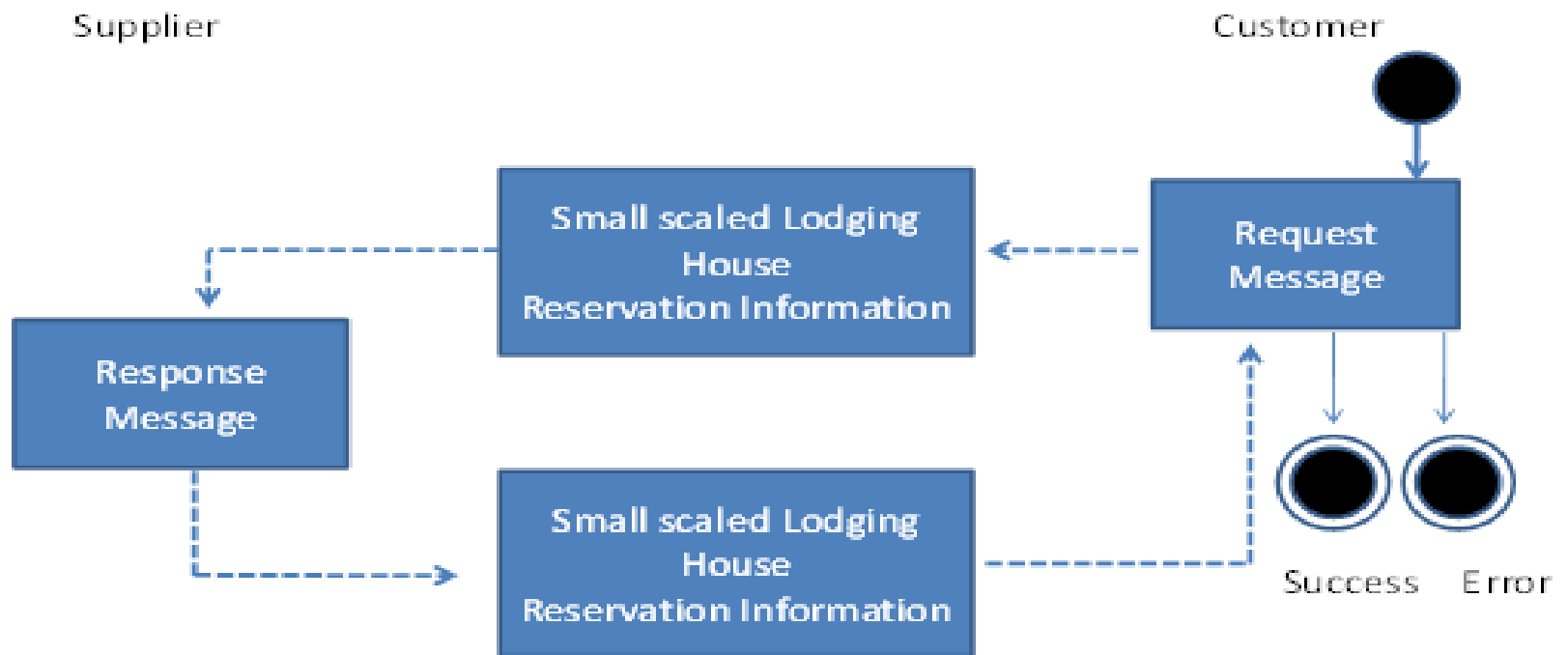
# Activity Diagram- Case2

**Activity Diagram (Lodging House Travel Product )—Case 2**



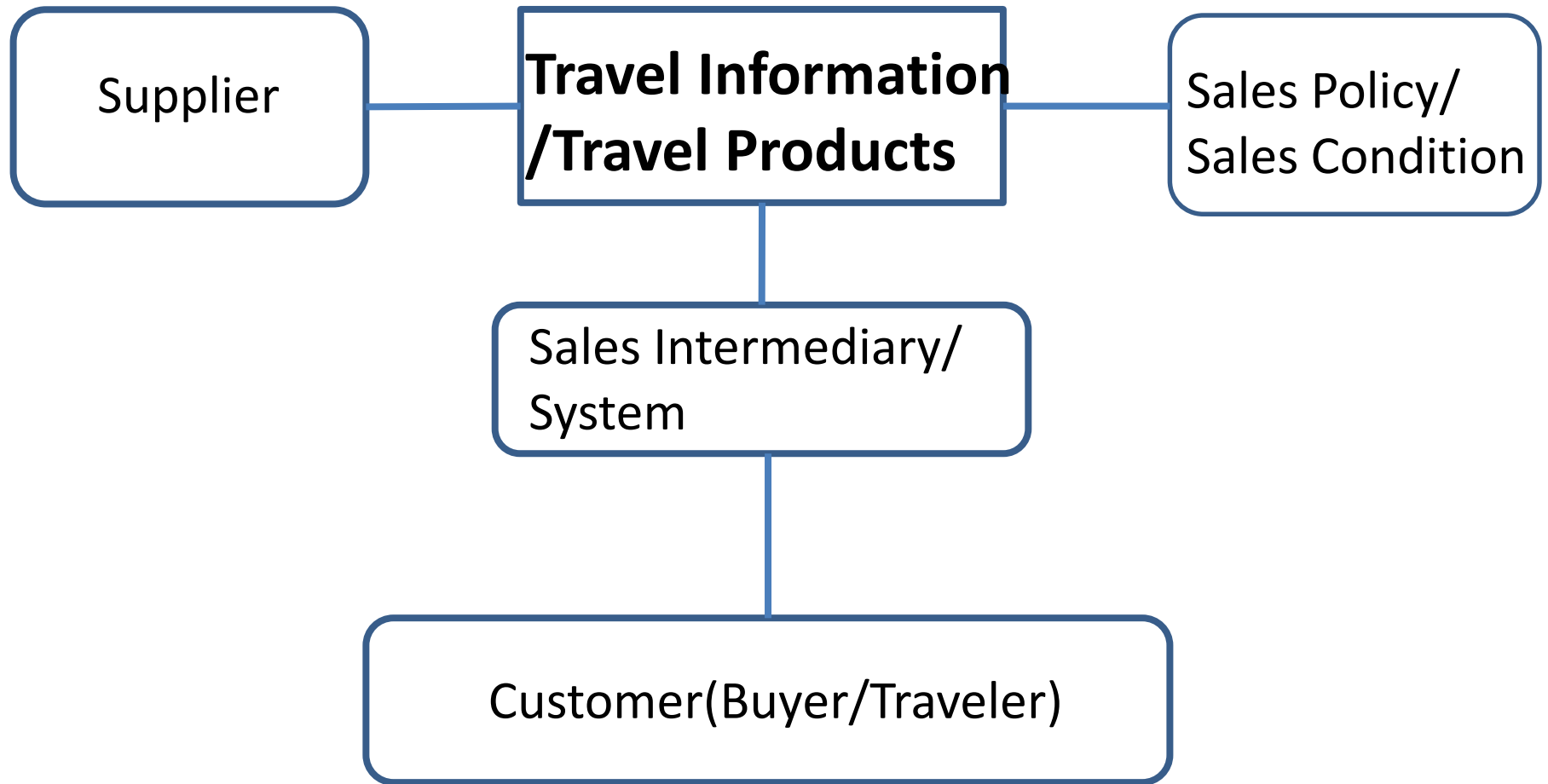
# Activity Diagram for Reservation

Activity Diagram (Small scaled Lodging House Reservation Information Process)

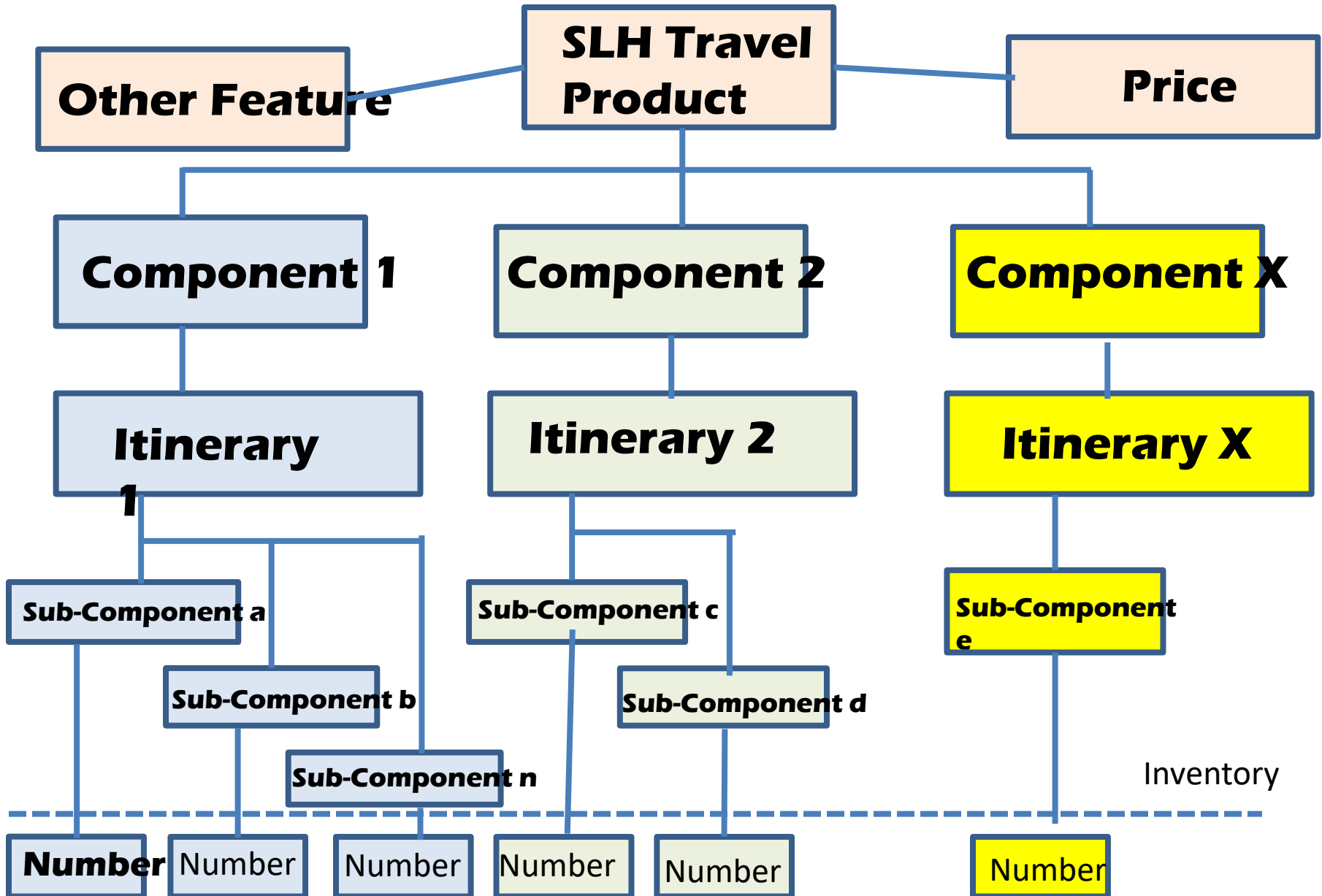


# Comprehensive Travel Information

Trade between Supplier and Customer



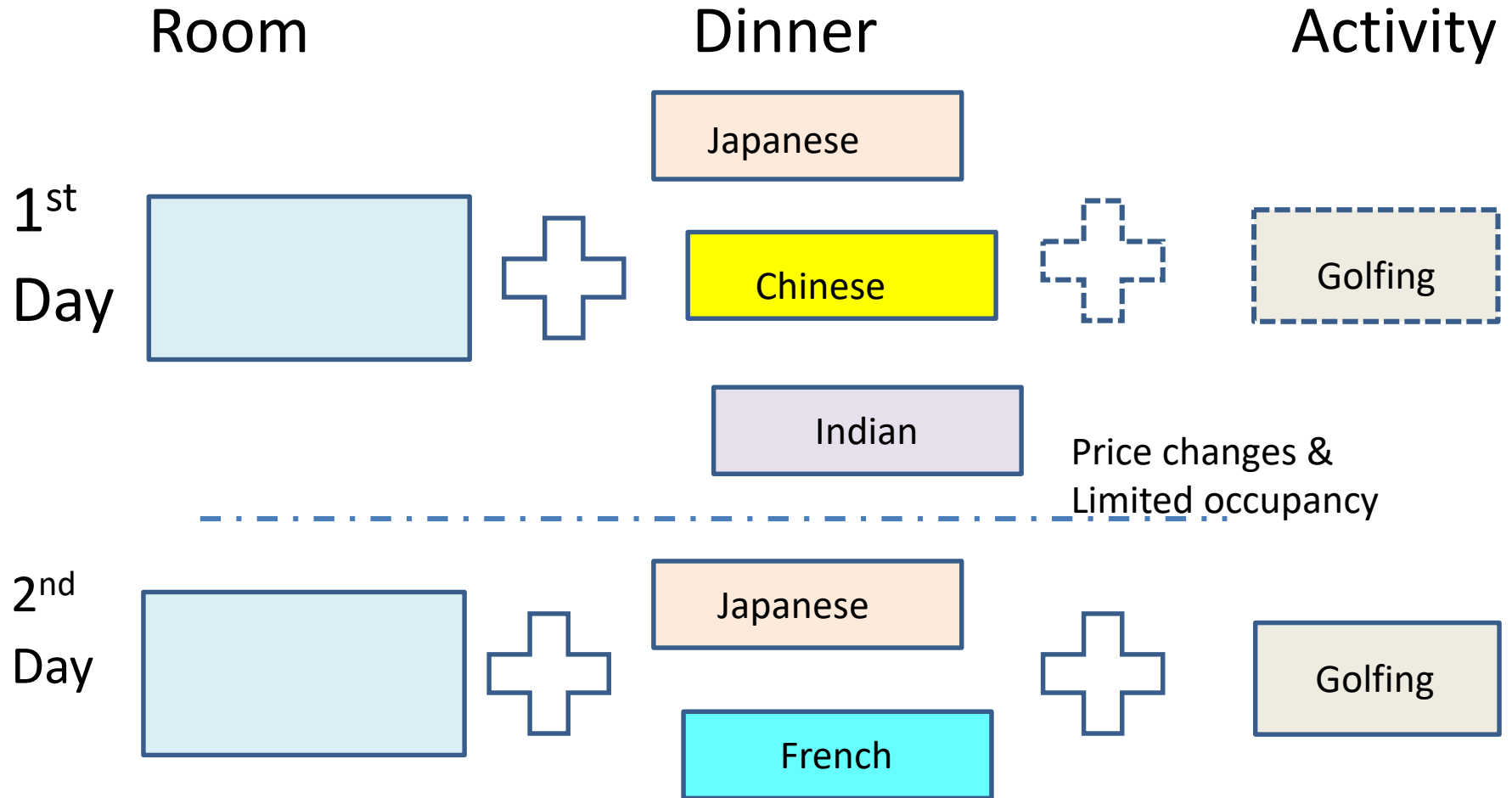
# Structure of SLH Travel Products





# An Example of SLH Travel Products

A Japanese style room with a selectable dinner and an activity



# CC and BIE of UNCEFACT

