



Netherlands Enterprise Agency

e-CROP and Track and Trace

Animals and Products,
Usages

Frans van Diepen

March 28, 2017



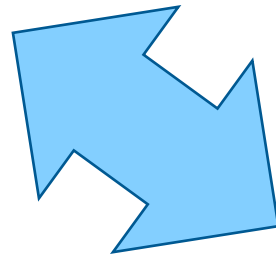
Content

- Introduction
- Concept of e-CROP and Track and Trace
- Interaction with other standards
- Usage



Developments in agro food


- Sustainability
- Food safety
- Market access



- Traceability
- Transparency
- Evidence Based production

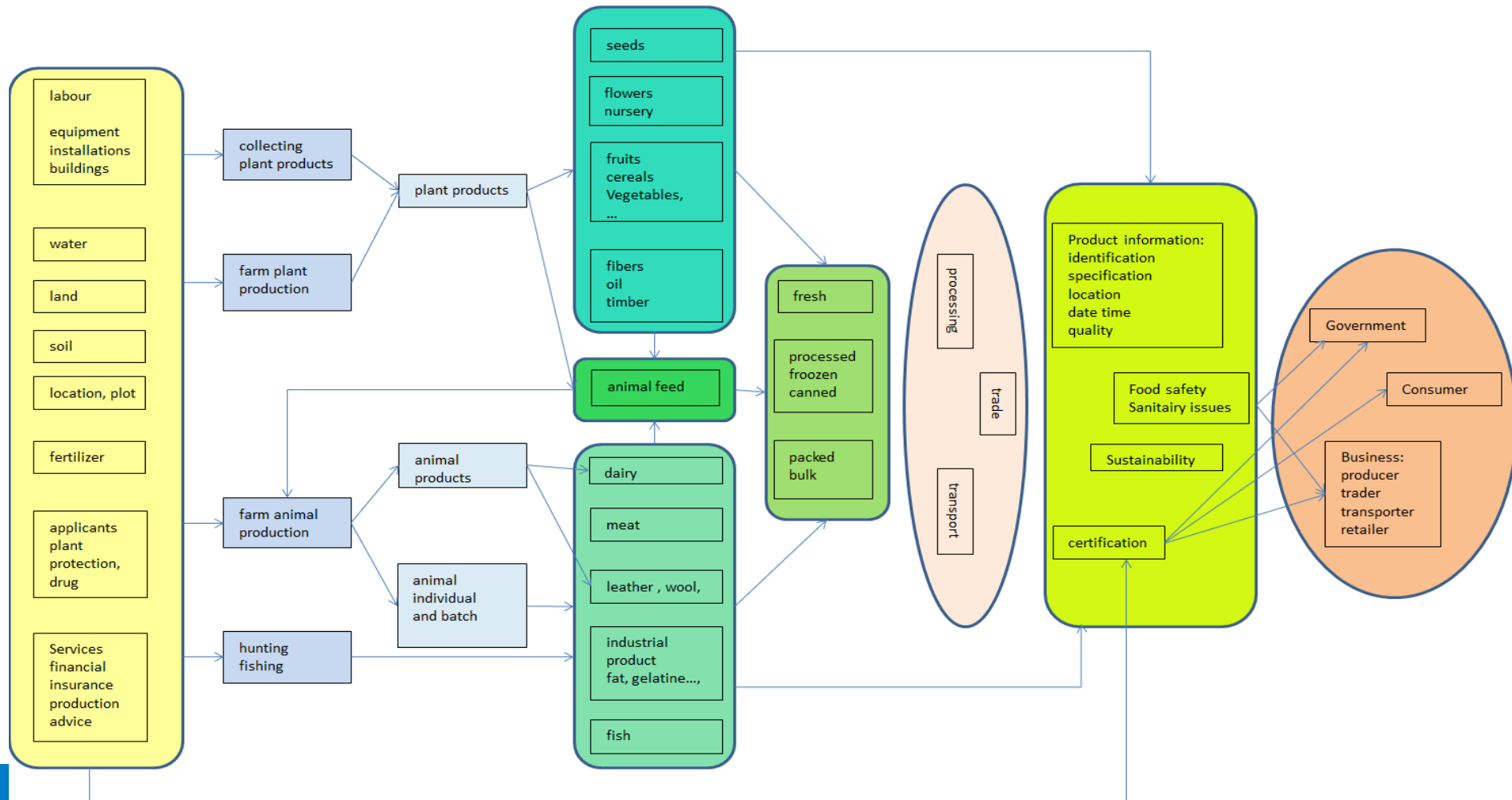


Traceability and Transparency

- Party
 - Identification
 - Information
 - Product
 - Identification
 - Description
 - Process
 - Location
 - Date/time
- 
- A large blue curly bracket on the right side of the 'Party' and 'Product' lists groups them together, pointing towards the 5W1H questions on the right.
- Who
 - What
 - Why
 - Where
 - When



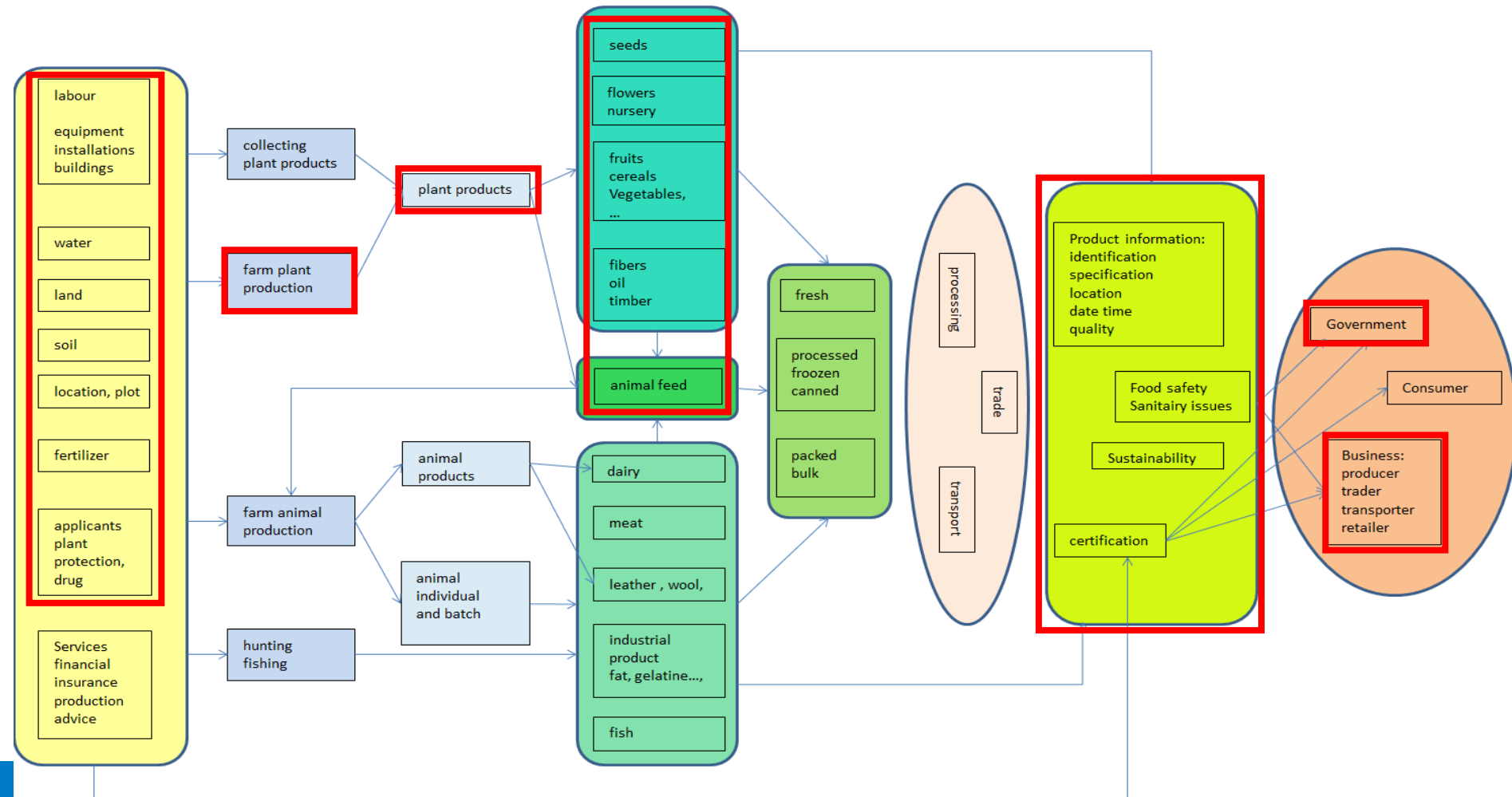
The agri food domain





The e-CROP domain

party





A very complex production and supply chain and demanding consumers.

How can a farmer, a processor, a packer or trader comply to these demands?

Track & Trace messages for the supply chain
eCROP messages for plant production at the farm



Traceability

- Traceability processes for
 - individual animals
 - groups of animals
 - Products of animal or plant origin
- Scope
 - Livestock: birth – death
 - Fish: catch – first selling
 - Product: first processing - retailer/consumer
- Within a country or trans-border
- B2B and B2G
- Using general principles EPCIS, CCL, code lists, identifiers



Traceability use case for animals

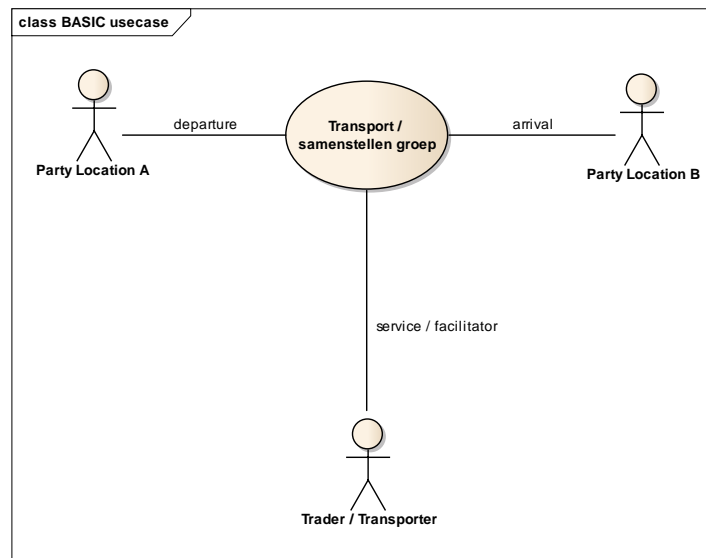
Individual identified
Batch identified

Location
legislation
regulations
business

ID farm
market
slaughterhouse

Arrival
- birth
- transport
- catch

Departure
- death
- transport



Transport type
Transport means



Track and Trace processes

- Event declaration
- Retrieve event information



Track and Trace

Live animal, Fish, Animal product,
Plant and Plant product

- Event driven
 - Event: modification of location, product, proces, transport or party
- Recording of events
- Retriving information about events.
- Based on
 - Who, What, Why, Where, When
 - generic level ISO / IEC 19987 (EPCIS)
 - detailed level for animal, plant and product details

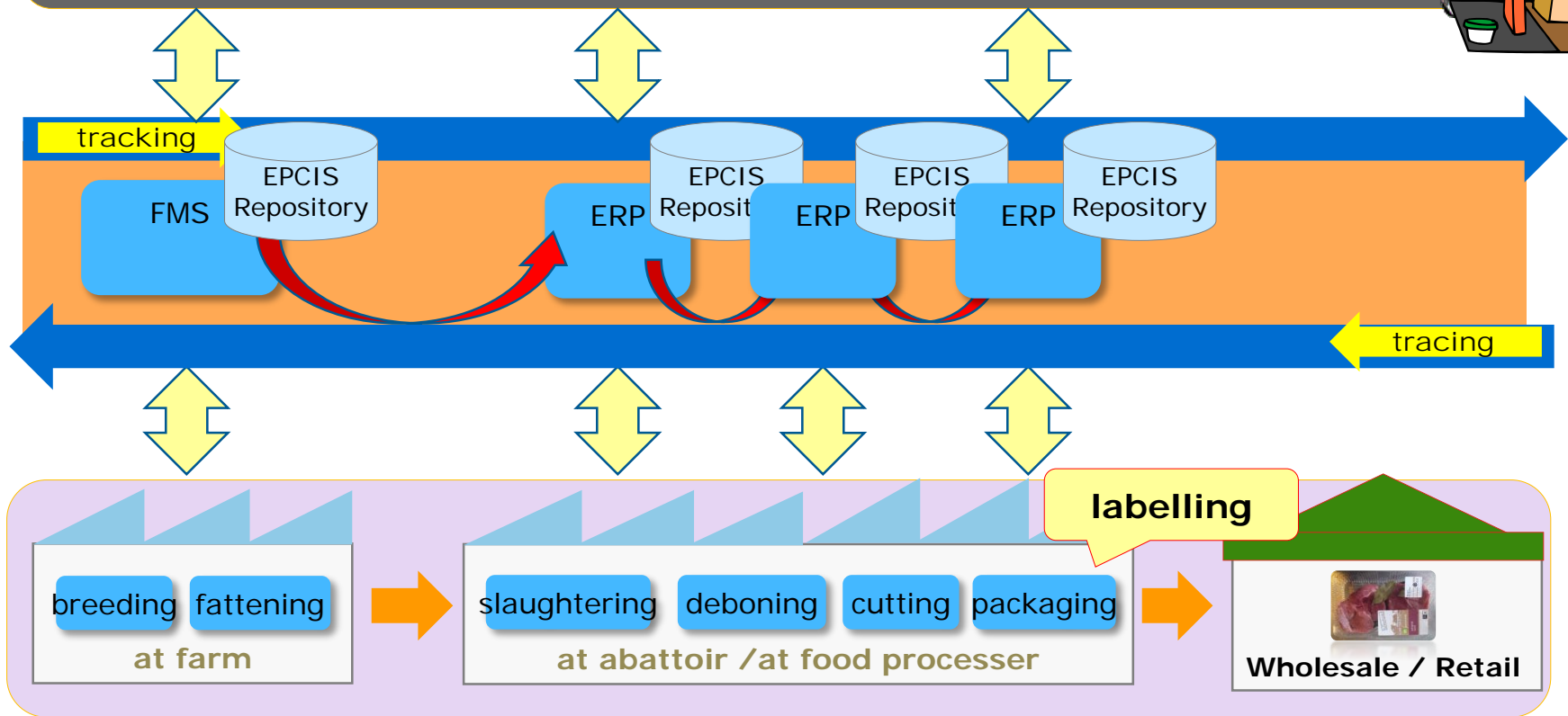


Track and Trace

- Animal / product (individual or batch)
 - Event (type)
 - Date Time
 - Location (type, characteristics, administrative, adress,)
 - Transport (movement, delivery, means)
 - Party
 - Transformation, aggregation, transaction
- Recording and registration of the event, with the relevant details



Services: discovery / search / smartphone apps





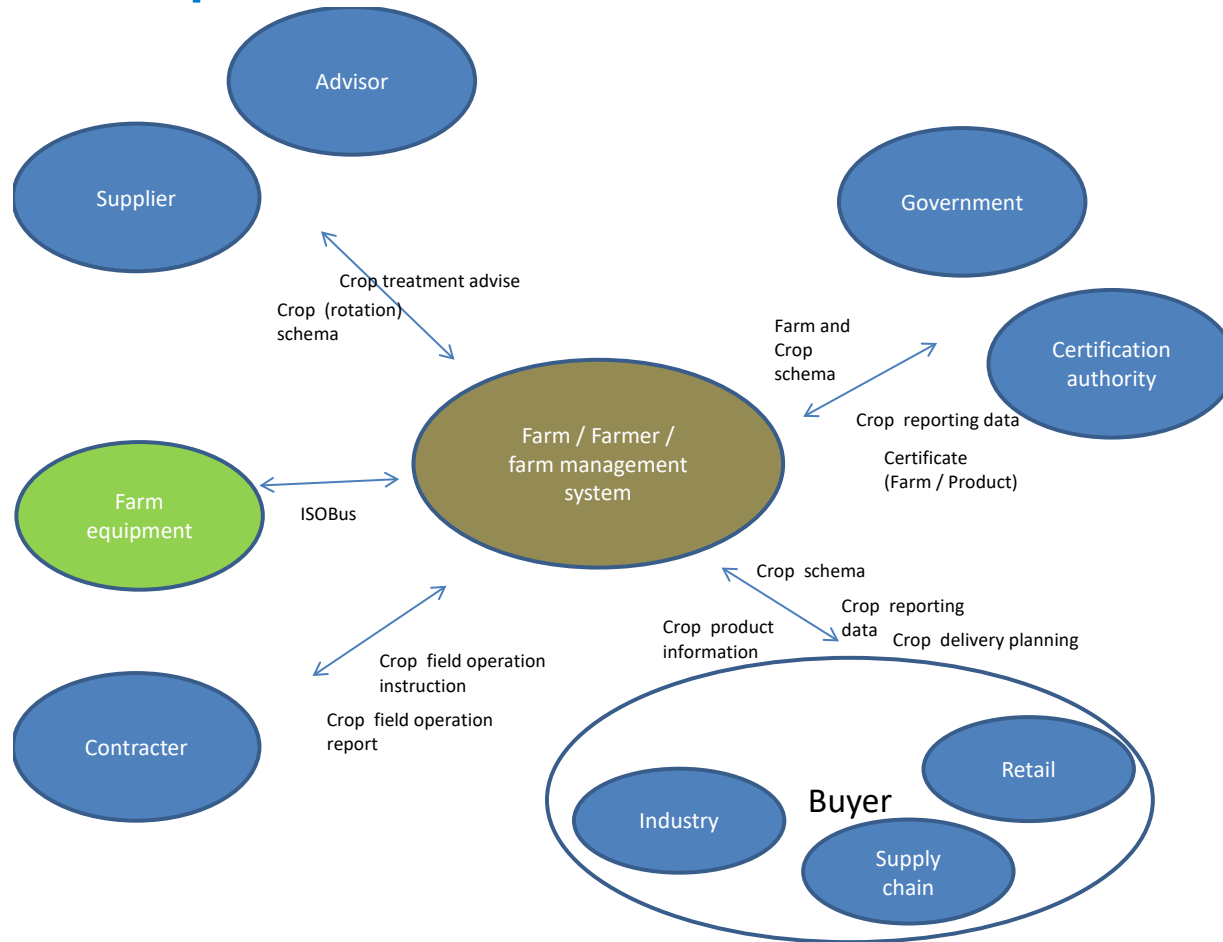
e-CROP

The Who, What, Why, Where, When
in plant production at the farm

- arable farming
- Horticulture
- animal feed (pasture, silage, etc)
- aquaculture



E-CROP scope





The usage of eCRoP and TT

who

- Supply chain
- The farmer
- Authorities

when

- Planning
- Monitoring
- Compliance
- In case of incidents

for

- Evidence based sustainable production



e-CROP

Content

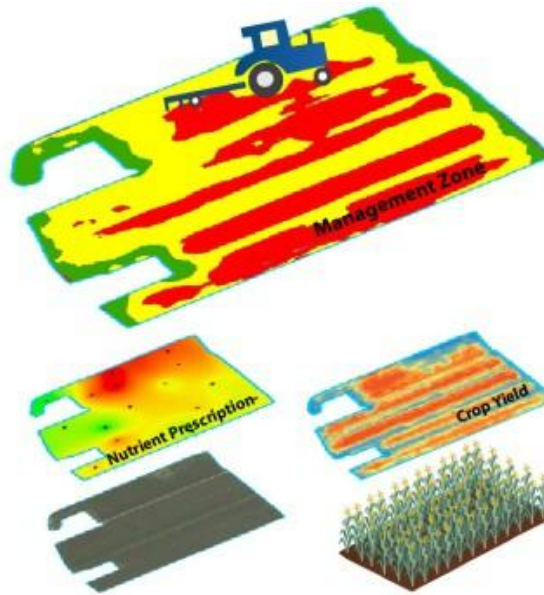
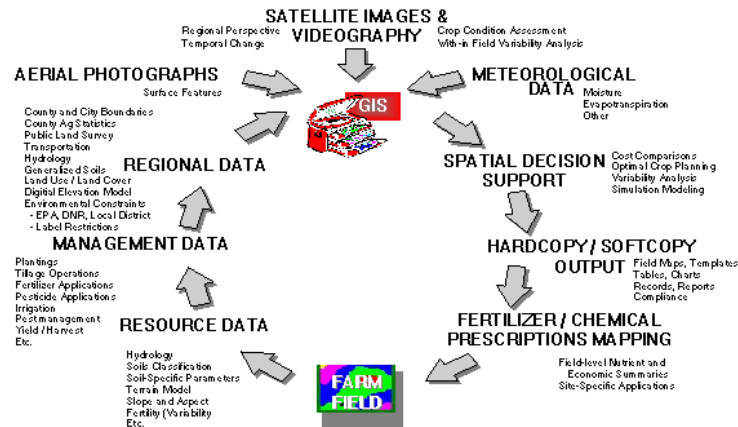
- Crop specifications
 - Start date, harvest date, variety, production location
- Data about treatments
 - Fertilizers
 - Pesticides
 - Use of energy and water
- Data about labor
- Certificates (Global GAP, SPS E-Cert, ...)

Use cases

- Advising
- farm operations:
 - planning, instruction, operation and monitoring
- product information
- certification
- regulations

Messages

- Advice support
- Cropping scheme
- Farm operations
- Crop report





Example for a field B2B and B2G

Identification

Accuracy

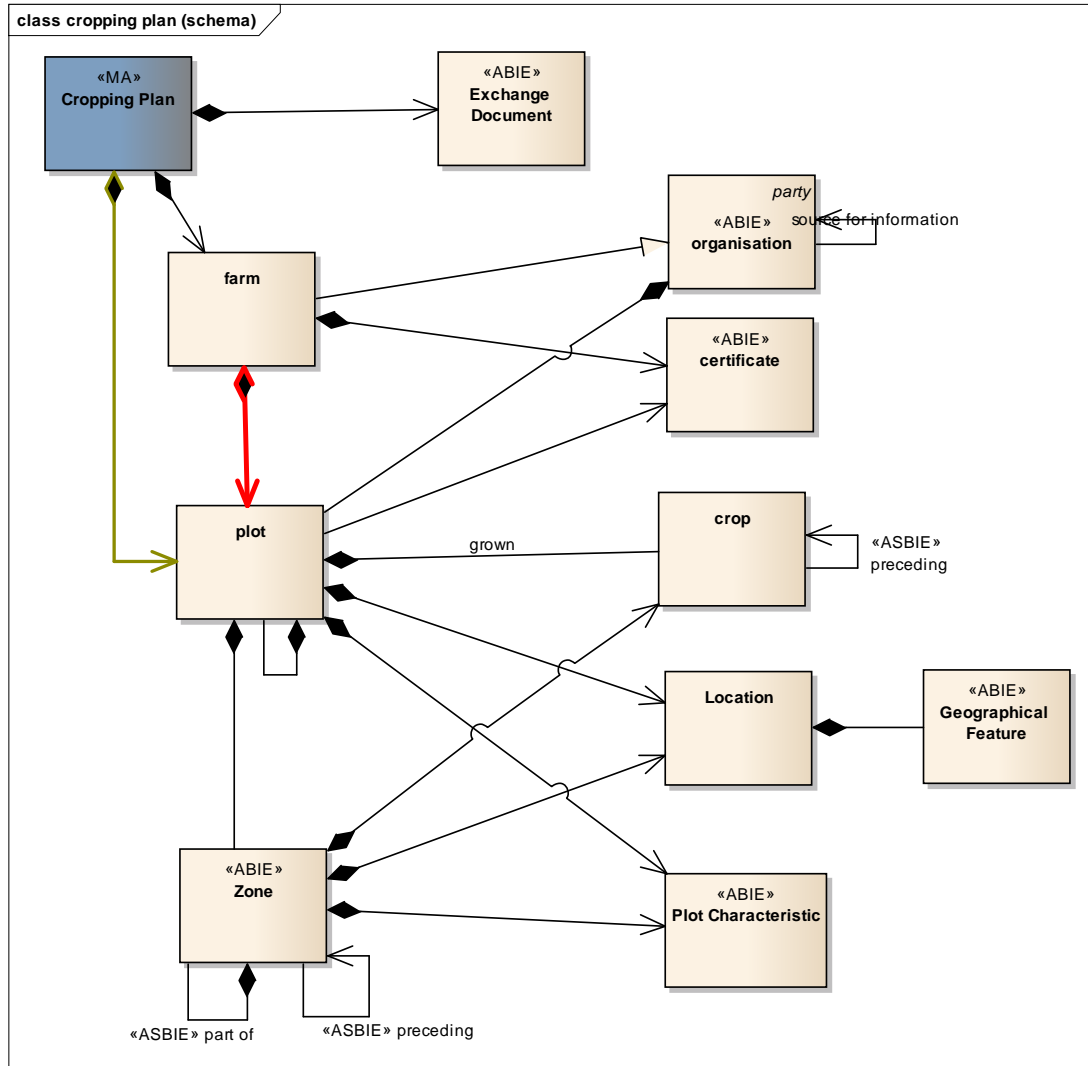




Generic structure e-CROP

Based on

- Data Reference Model CROP
- UN/CEFACT Core Component Library
- Re-use elements of
 - eLAB,
 - Track and Trace,
 - eCERT





E-CROP Geographical information

- Support for advanced features
(multi point, line, arc, multi polygon, surface, 3D, grids)
- Support for field production and greenhouse cultivation
- Harmonised to OGC specifications
- Interoperable with
 - GIS applications
 - ISObus



Code lists

- product coding (GPC)
- plant variety
- plant protection chemicals
- applicants
- packaging
- ...



Identifiers

- Party: farmer, farm, trader, cooperative
GLN, other
- Location: farmsite, storage, field,
crop field, treatment zone,
harvest zone
GLN, other
- Product: individual, batch, lot,
stored and or packed product
aggregation / deaggregation of batches
GTIN, SGTIN, other



Thank you for your attention

frans.vandiepen@rvo.nl