



**ngi** START UP MIND

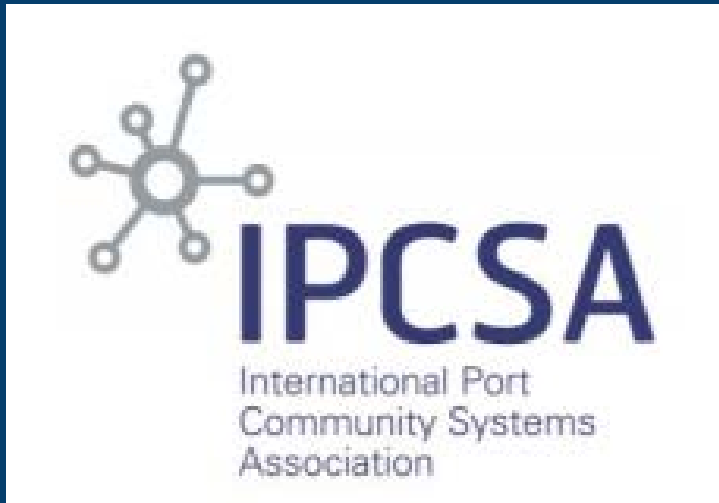
**MGI EXPERIENCE**

**Ci5** SMART SYSTEM  
FOR SMART  
SUPPLY CHAINS



The use of UN/LOCODE in Cargo Community Systems  
Geneva, March 30<sup>th</sup> 2017

# WHAT IS A PORT COMMUNITY SYSTEM?



A Port community system is:

- a **neutral** and **open** electronic platform enabling intelligent and secure exchange of information between **public** and **private** stakeholders in order to **improve the competitive** position of the sea and air ports' communities.
- optimises, manages and automates port and logistics processes through a **single submission** of data and connecting transport and logistics chains



IT  
LOGISTICS  
EXPERT

# SOLUTIONS MADE FOR PROFESSIONALS BY PROFESSIONALS

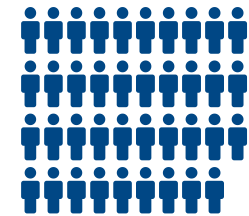


# START UP MIN D

30 YEARS  
OF EXPERIENCE

LOCATED IN  
MARSEILLE

2 0 1 5  
6,2M€  
REVENUE



39  
EMPLOYEES

# 3 GENERATIONS OF CCS MADE IN MARSEILLE

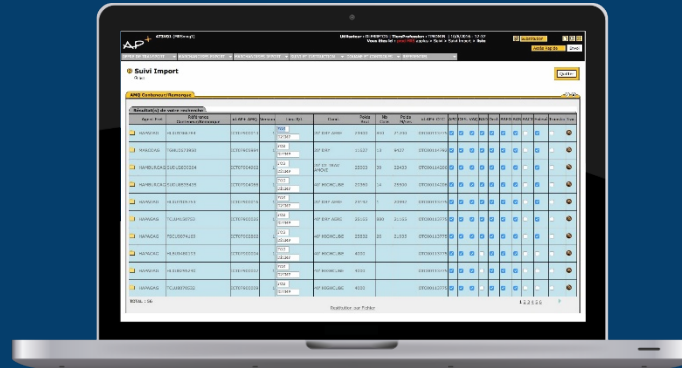
1989



SYSTÈME  
PROTIS

**1 day**  
for Customs  
clearance

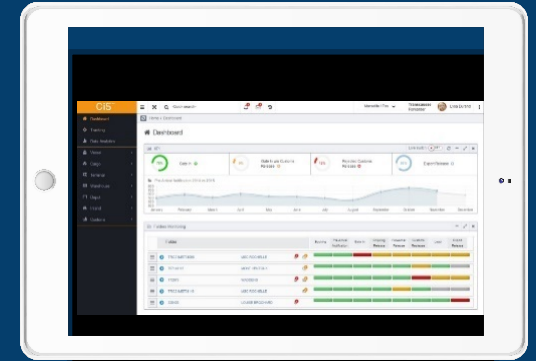
2005



AP<sup>+</sup>

**7 minutes**  
for Customs  
clearance

2017



Ci5<sup>™</sup>

**A few  
seconds**  
for Customs clearance

# 1989 A CONNECTED SHIPPING COMMUNITY



Shipping  
agents



Customs



Ship-owners



SYSTÈME  
PROTIS

Port Authorities



Freight  
forwarders



Terminal  
operators





# 2005: 1<sup>st</sup> AP+ implementation in Marseille Fos



# WORLD'S 1<sup>st</sup> TRI- MODAL CCS



# AP<sup>+</sup> : A NATIONAL IMPLEMENTATION



# 2017, AN EXPANDED ECOSYSTEM



AN INTERNATIONAL AMBITION

Ci5...





**mg!** START UP MIND

**MGI EXPERIENCE**

**Ci5** SMART SYSTEM  
FOR SMART  
SUPPLY CHAINS

# UN/LOCODE for cargo community systems



## Realize integration

UN/LOCODE core components of port/airport professional business process integration

-----

Competitive



## Manage Complexity

UN/LOCODE a generic structure to cover ports and airports multiple stakeholders responsibilities

-----

Collective



## Support multimodality

UN/LOCODE a reference framework to manage transport mode change at ports and airports

-----

Sustainable



## Ensure data quality

UN/LOCODE basic building blocks to check/control data according to business context

-----

Reliable



## Stimulate innovation

UN/LOCODE coordinates allow to integrate geographical data into critical business process data

-----

Smart



# REALIZE INTEGRATION

UN/LOCODE core components of port/airport professionals business process integration

**45** millions  
messages  
a year

80% of data entry

---

**85%**

Messages using  
UN/locodes

---

Native **EDI**  
application

**Integration**  
of all types of documents

- Customs documents,
  - Commercial documents,
  - Movement reports,
  - Status reports,
- 

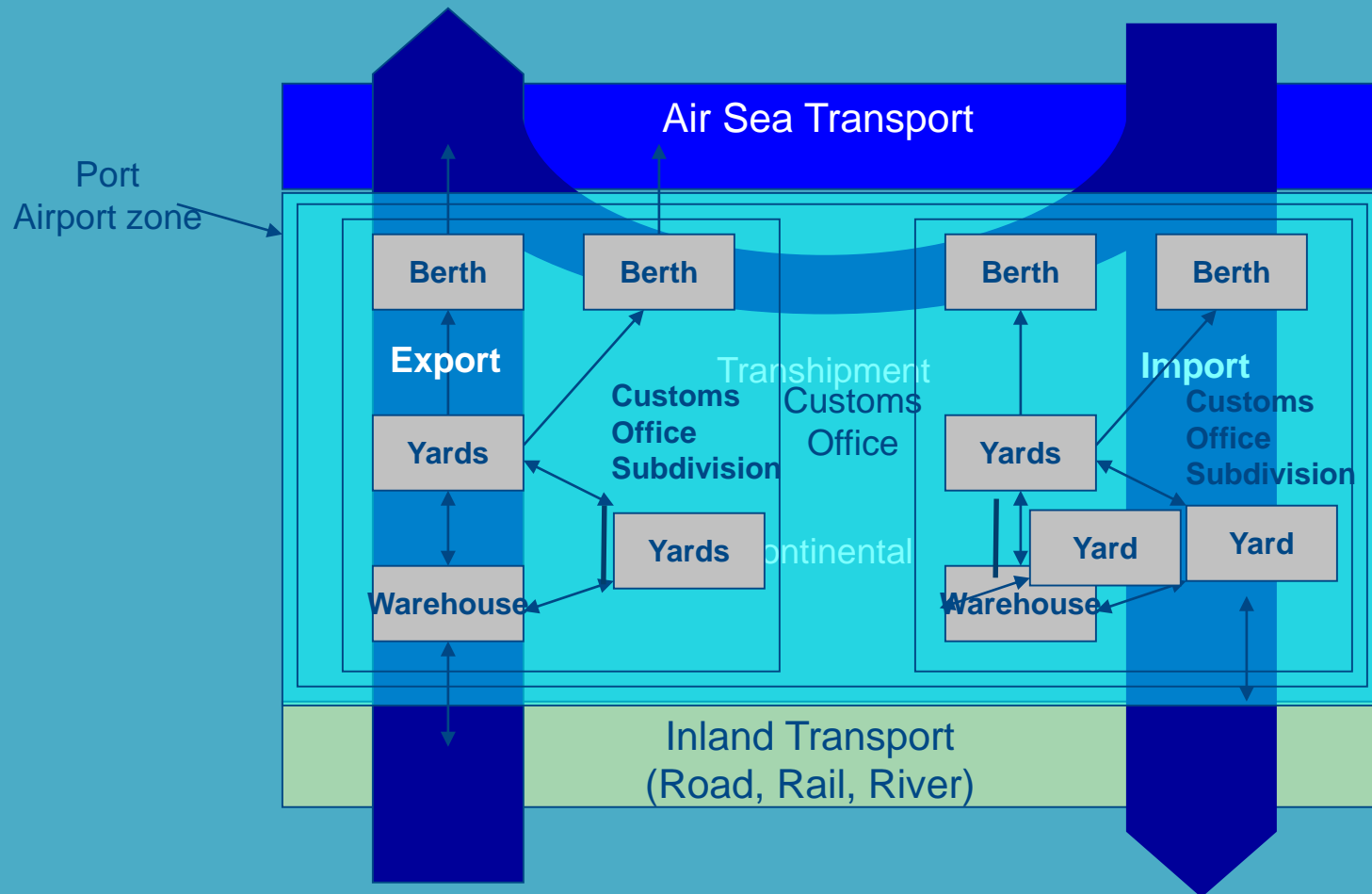
**Web application**  
with an open source architecture





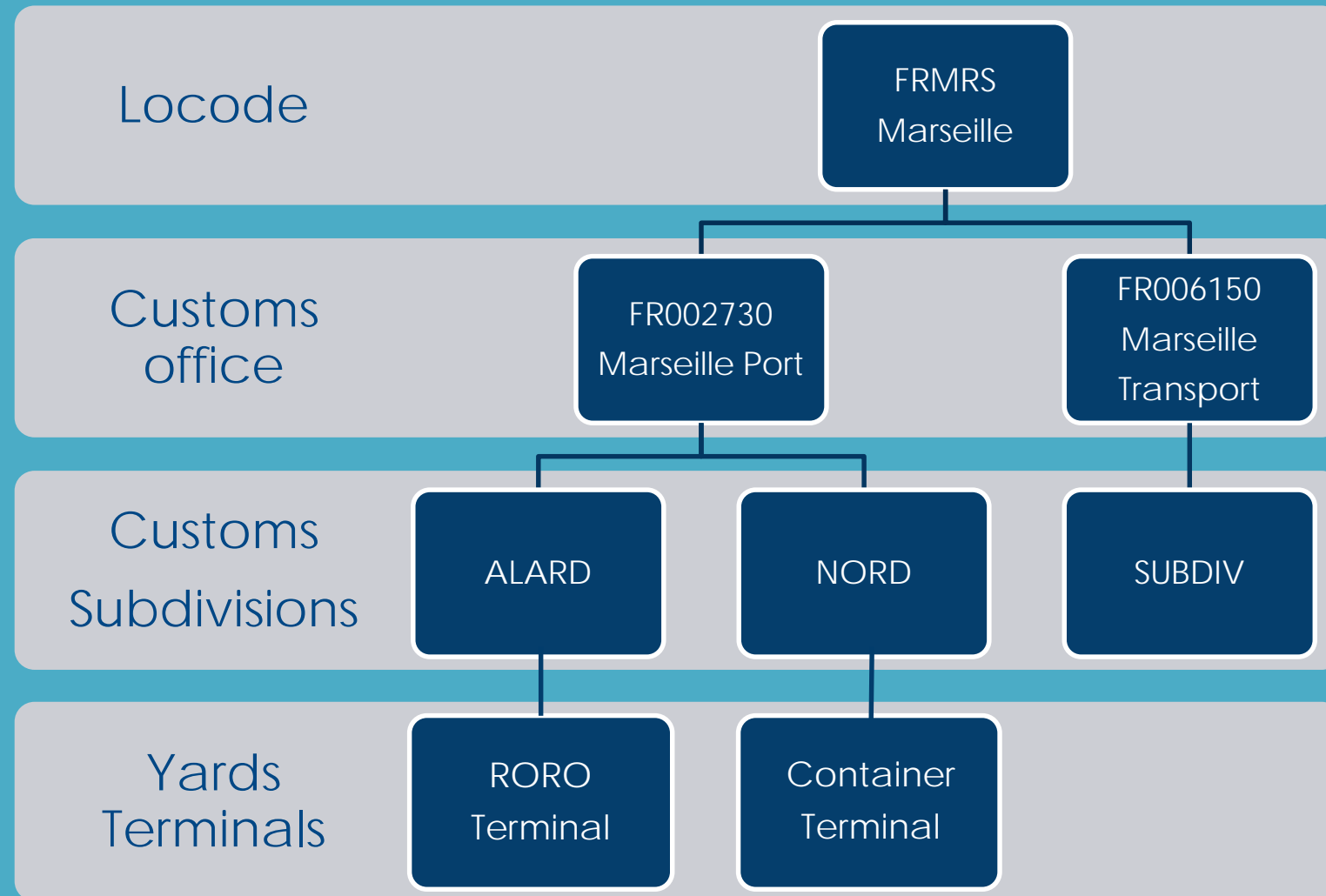
# MANAGE COMPLEXITY

UN/LOCODE a generic structure to cover ports and airports multiple stakeholders responsibilities





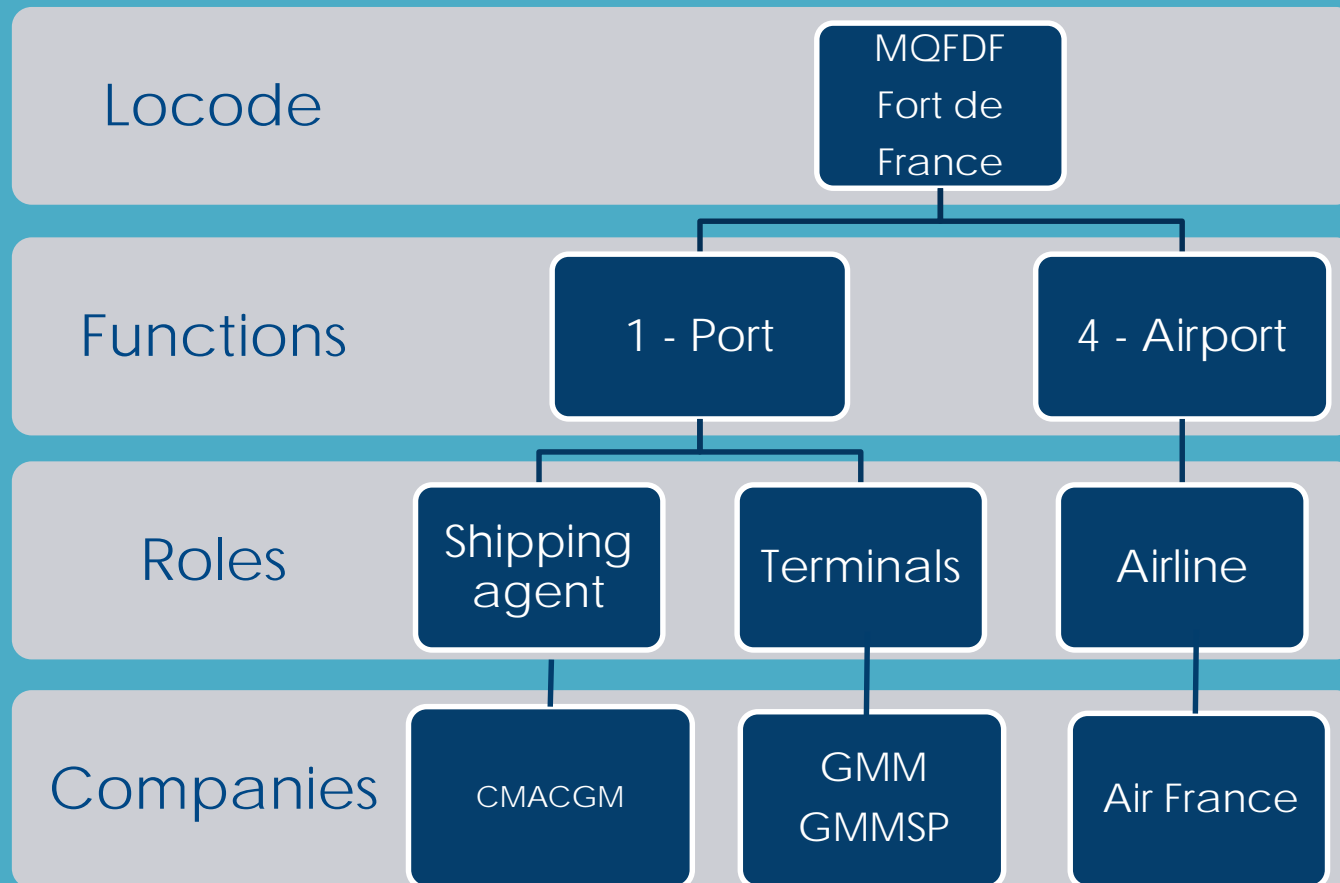
# MANAGE COMPLEXITY





# SUPPORT MULTIMODALITY

UN/LOCODE a reference framework to manage transport mode change at ports and airports



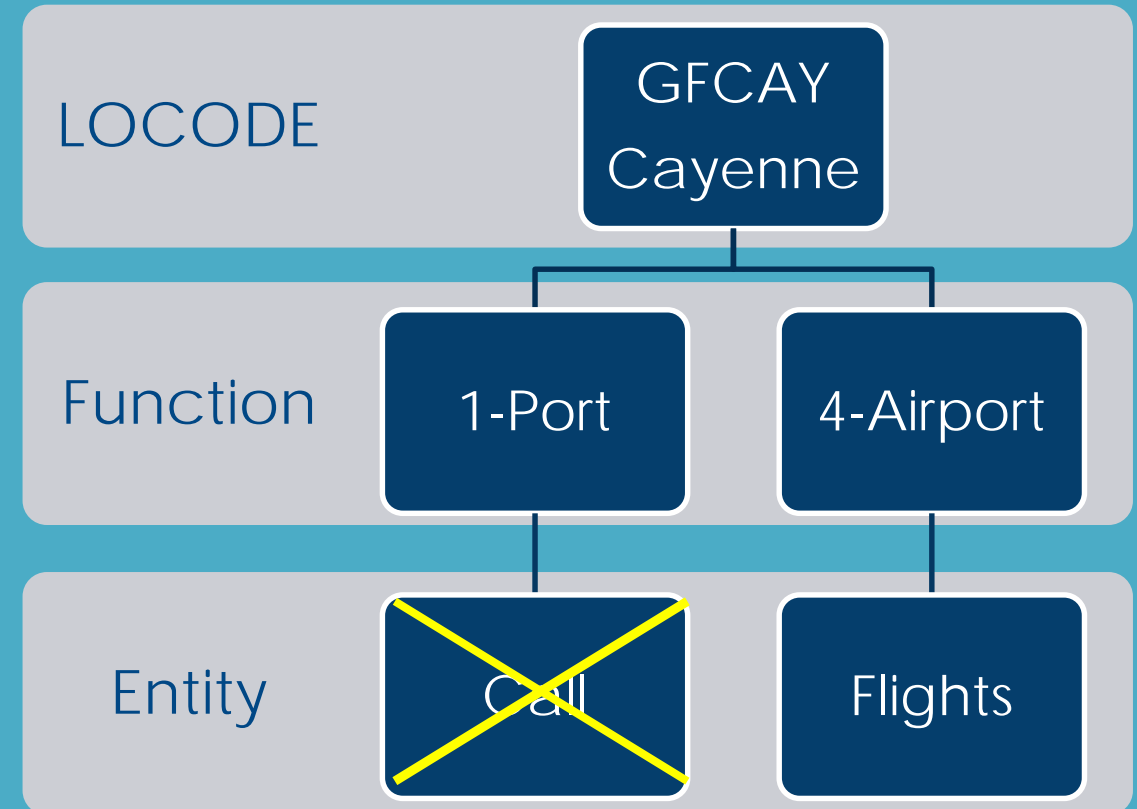
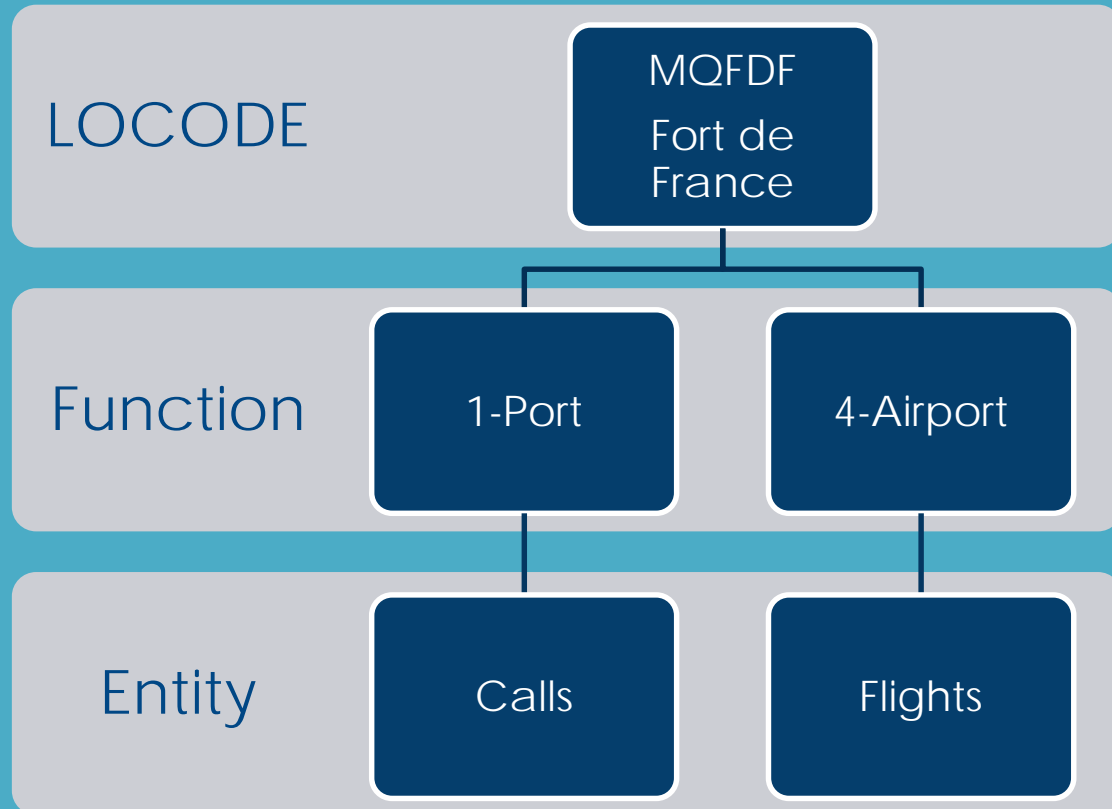
One single window





# ENSURE DATA QUALITY

UN/LOCODE basic building blocks to check/control data according to business context





# STIMULATE INNOVATION

UN/LOCODE coordinates allow to integrate geographical data into critical business process

Locode

FRMRS  
Marseille

Functions

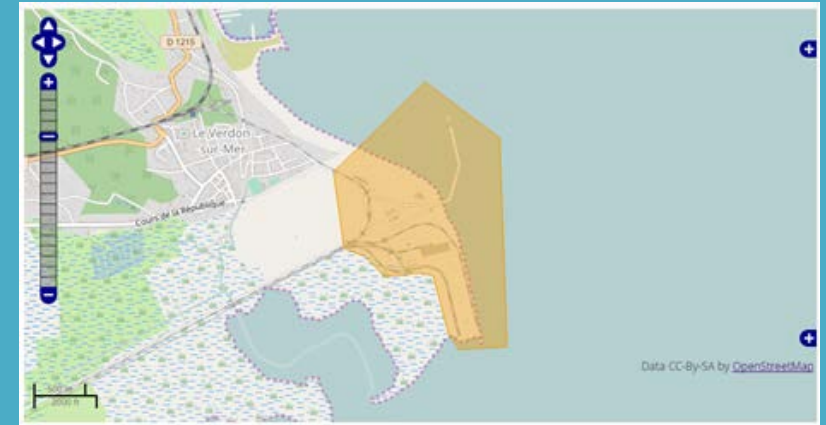
1-Port

Coordinates

4318N  
00524E

Innovations

Vessel  
ETA



The background features a dark blue gradient with white geometric patterns of interconnected circles and lines, resembling a network or molecular structure. These patterns are distributed across the top and bottom sections of the image. A horizontal white band runs through the center, containing the text.

**THANK YOU FOR YOUR ATTENTION**