

29th UN/ CEFAC Forum

Nom: **Amri Mohamed Anas**

Title : **UN LOCODE Conference**



The economic operator facing the challenges of the international trade



- Immaturity of the functions of the supply chain in SME's
- Unclear procedures and circuits to import and export
- Uncertainty about the necessary time
- Uncertainty about costs involved
- Lack of predictability



- Inventory shortage
- Inventory oversizing
- Surprises in the real cost
- Delays in customer delivery



- Weak competitiveness
- Break of production lines
- Losses in trade transactions
- Dissatisfied end customers
- Financial troubles and losses

The economic operator facing the challenges of the international trade



Businesses suffer both direct border-related costs, such as expenses related to supplying information and documents to the relevant authority, and indirect costs, such as those arising from procedural delays, lost business opportunities and lack of predictability in the regulations. **Surveys aimed at calculating these costs suggest that they may range from 2% to 15% of the value of traded goods.**

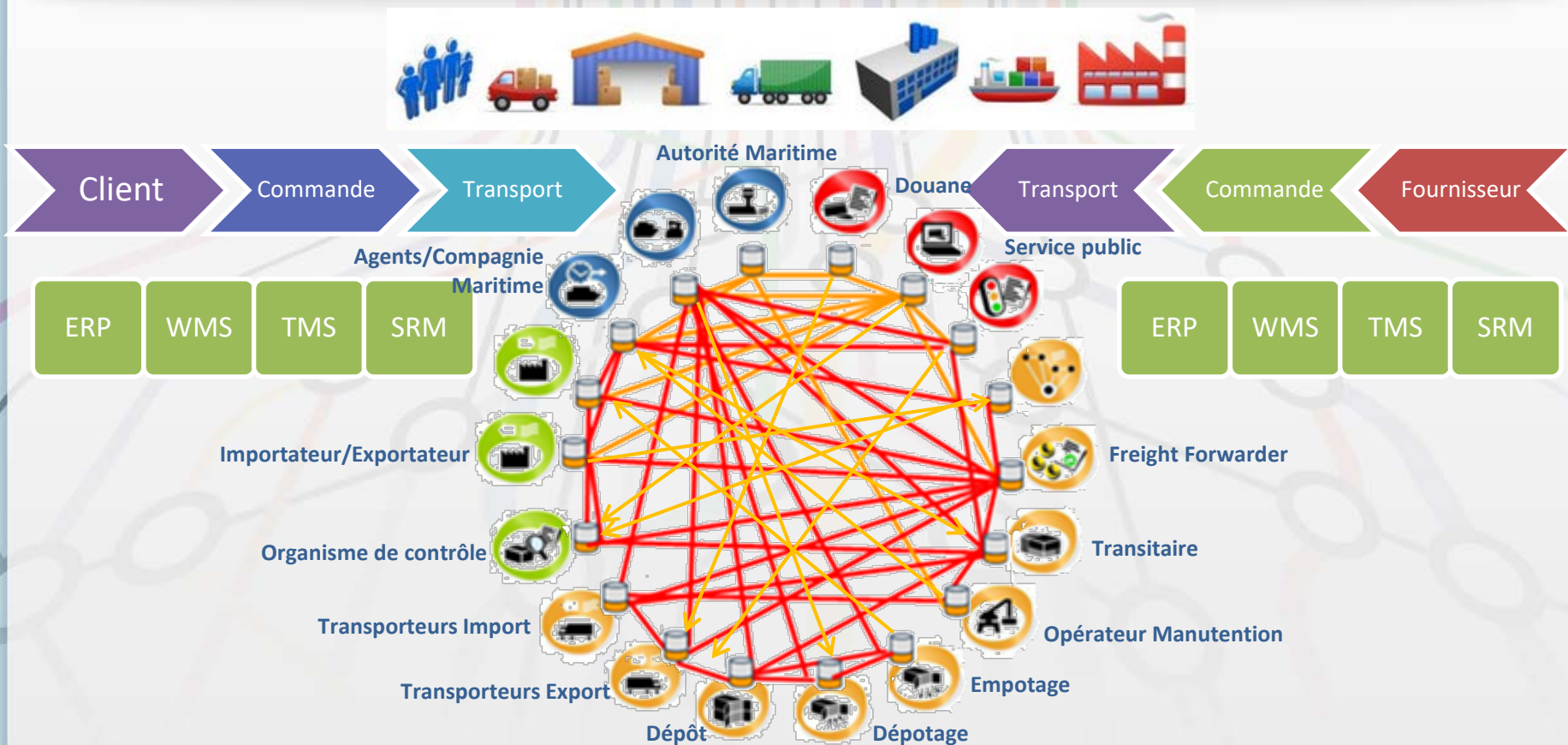
Source : OECD, October 2005, Policy Brief

UN-CEFACT Recommendation 33: Single Window (SW) definition

A Single Window is defined as a facility that allows parties involved in trade and transport to lodge standardized information and documents with a single entry point to fulfill all import, export, and transit-related regulatory requirements. If information is electronic, then individual data elements should only be submitted once.

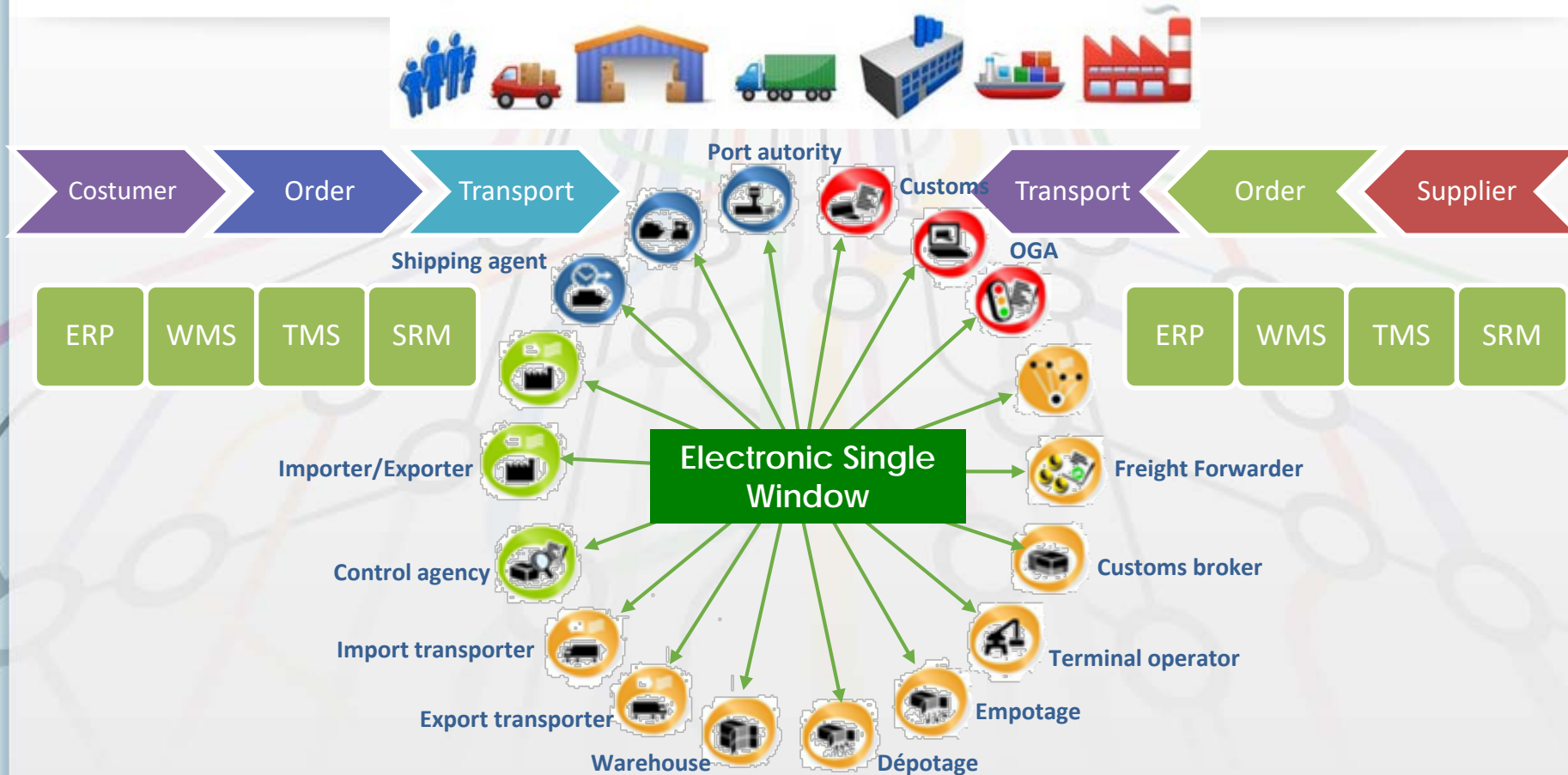


Complexity of integration of the international supply chain



Indeed, international trade exceeds the regulatory formalities to be accomplished with the administrations.

Complexity of integration of the international supply chain



An electronic Single Window is an important **coordination** tool for public and private service providers to help the economic operators to better integrate their supply chain and facilitate trade.

PortNet and UNCEFACT recommendations

Recommendation 33 Establishing a Single Window

- Key Factors for Successfully Implementing a Single window
- The most common models of a Single window
- Measures to be taken in practice to plan and implement a Single window

Recommendation 34 The simplification of information exchanged

- The organization of the simplification process
- The steps of simplifying and standardizing data
Case Study Series: USA and the Republic of Korea

Recommendation 35 The legal environment of the Single Window

- List of legal issues relating to the operation of a single window
- Guidelines for drawing up the list
- Set of references

UN / LOCODE: Referencing places internationally

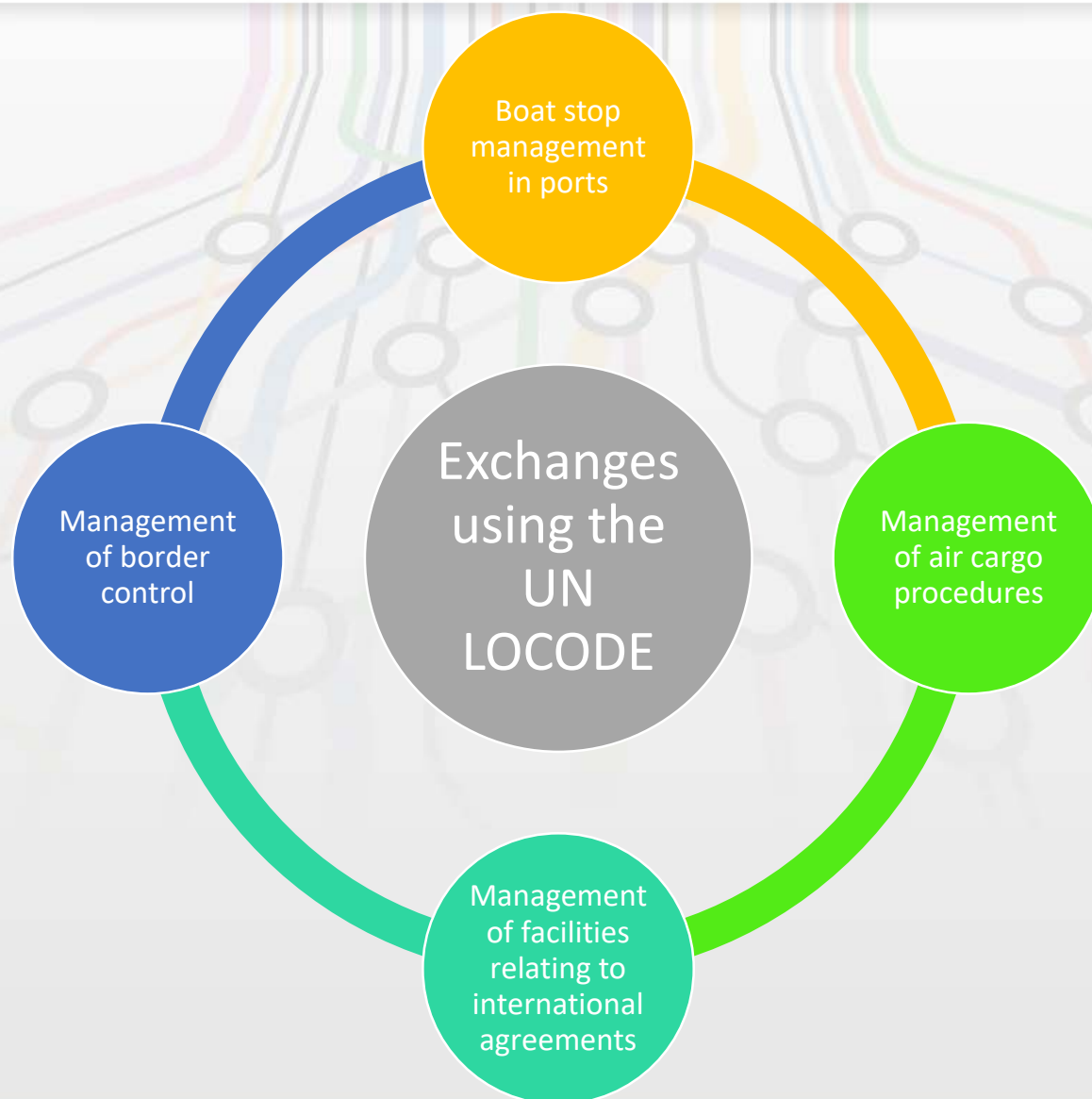
In general :

- More than 82000 codes for geographical locations
- Functions such as airports, stations, roads, postal sorting centers and ports
- A repository that is used to trade or transport worldwide

Case of PortNet :

- Références des ports
- Référencements des aéroports
- Références des zones géographiques : certificats d'origines

UN / LOCODE: Referencing places internationally





PORTNET S.A.

Enceinte Portuaire Bâtiment de la Capitainerie,
2^{ème} étage, Port de Casablanca, 20000
Casablanca, Maroc

Amri Mohamed Anas

mamri@portnet.ma