



United Nations Economic Commission for Europe
United Nations Centre for Trade Facilitation and Electronic Business
UN/CEFACT

UN Centre for Trade Facilitation and Electronic Business (UN/CEFACT)

Global Standards Setting

Maria Rosaria Ceccarelli

UNECE Economic Cooperation and Trade Division

Lance Thompson

Chair of UN/CEFACT

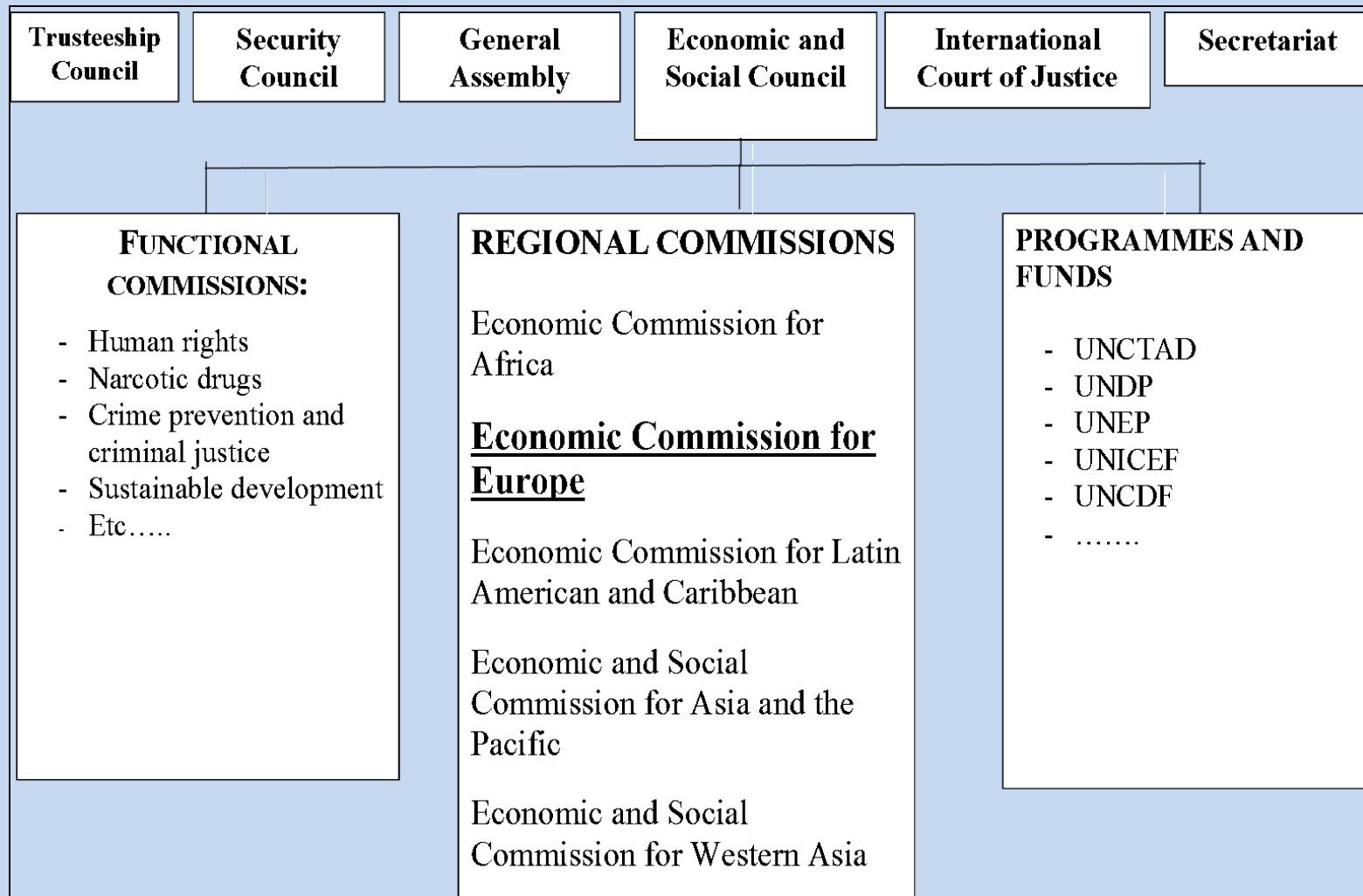


- UNECE and Trade Facilitation
- UN/CEFACT Mission
- UNECE UN/CEFACT Recommendations and Standards
- Project Development and Approval Process
- How to Participate

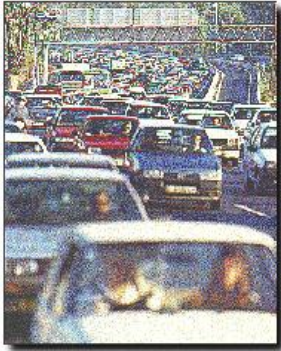
UNECE



UN Economic Commission for Europe (UNECE)



UNECE Work Areas



Transport



Economic cooperation



Statistics



Sustainable energy



Housing



Trade



Environmental policy



- One of UNECE's key objective is economic integration
- Trade Facilitation and the efficient trade data interchange are the key tools of UNECE to achieve this objective



Objectives

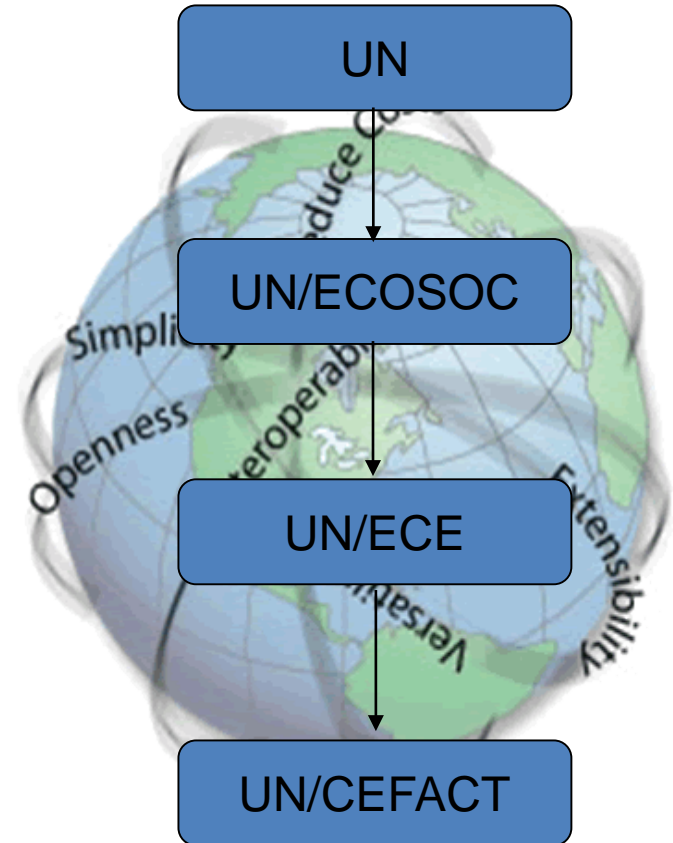
- Simple, transparent and effective processes for global business
- Efficient and automated exchange of information

Outputs

- Global Trade Facilitation and Electronic Business Recommendations and Standards

Means

- Public Private Sector Partnership – over 200 experts from government and business
- Meet virtually every week plus two Forums per year



Global Remit



Mission

- UN/CEFACT's mission is to improve the ability of business, trade and administrative organizations, from developed, developing and transitional economies, to exchange products and relevant services effectively.
- Its principal focus is on facilitating national and international transactions, through the simplification and harmonization of processes, procedures and information flows, and so contribute to the growth of global commerce

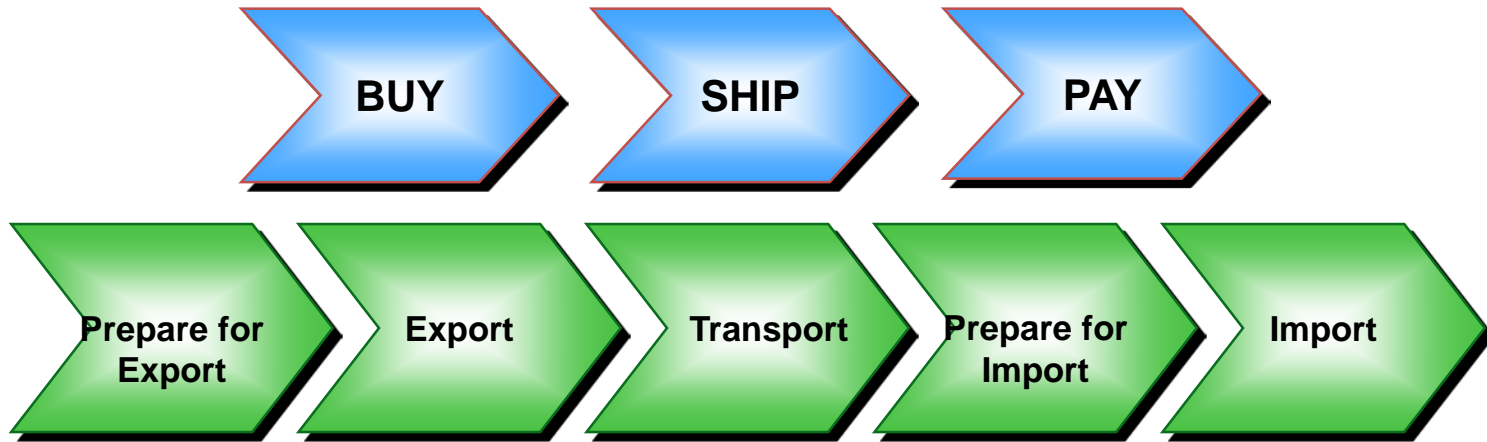


Facilitate - to make easy or easier

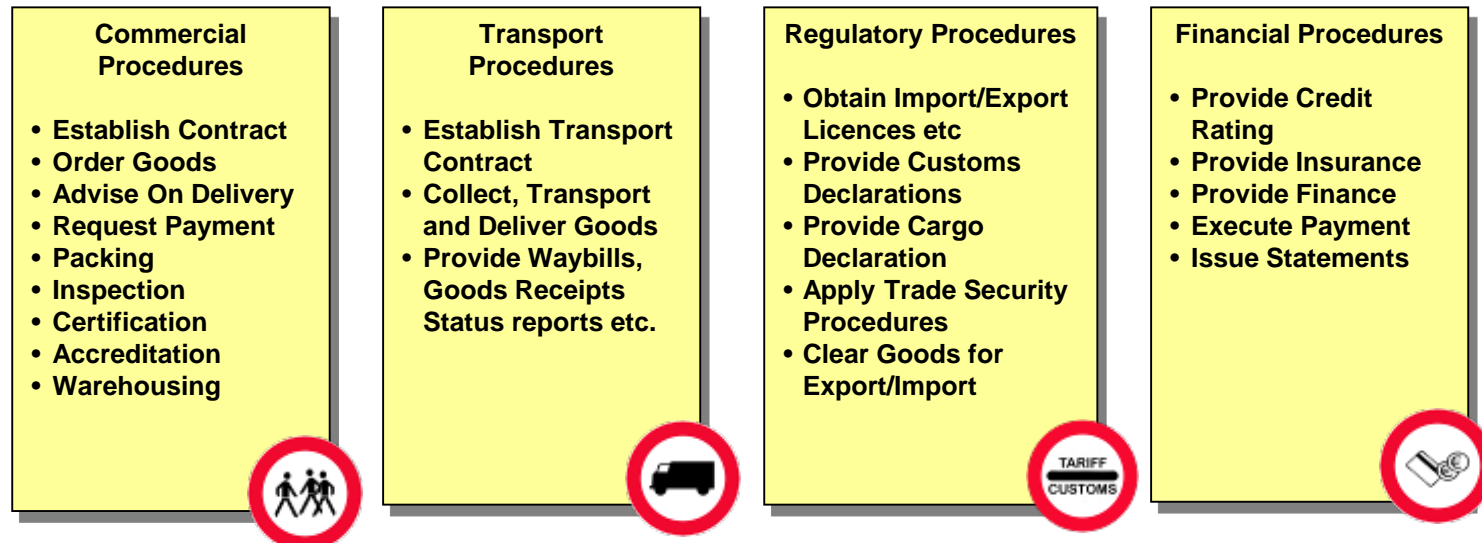
Trade Facilitation: “The simplification, standardization and harmonization of procedures and associated information flows required to move goods from seller to buyer and to make payment “



Buy-Ship-Pay



INVOLVES







TRADE FACILITATION

```
graph TD; A([TRADE FACILITATION]) --> B[Simplification]; A --> C[Harmonization]; A --> D[Standardization]; B --> E[Process of eliminating all unnecessary elements and duplications in formalities, processes and procedures]; C --> F[Alignment of national procedures, operations and documents with international conventions, standards and practices]; D --> G[Process of developing internationally agreed formats for practices and procedures, documents and information];
```

Simplification

Process of eliminating all unnecessary elements and duplications in formalities, processes and procedures

Harmonization

Alignment of national procedures, operations and documents with international conventions, standards and practices

Standardization

Process of developing internationally agreed formats for practices and procedures, documents and information



United Nations Economic Commission for Europe
United Nations Centre for Trade Facilitation and Electronic Business
UN/CEFACT

UN/CEFACT Outputs



With what?

- **Internationally agreed Recommendations and Standards**



- **Common Libraries**

- **Common Directories**



Trade Facilitation Recommendations (over 30 Recommendations)

- Recommendation 1 - UN Layout Key for Trade Documents (ISO 6422)
- Recommendation 4 - Trade Facilitation Structures
- Recommendation 18 - Trade Facilitation Measures
- Recommendation 25 - UN/EDIFACT (ISO 9735)
- Recommendation 33 - Single Window

Plus:

- Code Lists, such as Recommendation 16 - LOCODE

Many are ISO Standards and covered in the WTO Trade Facilitation Negotiations



UN Layout Key

- Specifically endorsed in the WCO Revised Kyoto Convention and the draft WTO TF Agreement
- Basis for the EU Single Administrative Document (SAD)
- Endorsed by key international organizations

The diagram illustrates the layout of the European Community Export Customs Declaration (UNECS-EX) form, which is a type of A. OFFICE OF DISPATCH REPORT. The form is divided into several sections:

- 1. DECLARATION:** This section includes fields for:
 - 1.1 Country of Export
 - 1.2 Party (1.2.1 Party, 1.2.2 Party ID)
 - 1.3 Date
 - 1.4 Trade location
 - 1.5 Reference number
 - 1.6 Country
 - 1.7 Person responsible for actual submission
 - 1.8 Country No.
 - 1.9 Trade No.
 - 1.10 CAP
 - 1.11 Country of origin
 - 1.12 Country of origin input
 - 1.13 C-Code
 - 1.14 Country Code
 - 1.15 Country of origin
 - 1.16 Country of origin
 - 1.17 Country of origin
 - 1.18 Country of origin
 - 1.19 Country of origin
 - 1.20 Country of origin
 - 1.21 Country of origin
 - 1.22 Country of origin
 - 1.23 Country of origin
 - 1.24 Country of origin
 - 1.25 Country of origin
 - 1.26 Country of origin
 - 1.27 Country of origin
 - 1.28 Country of origin
 - 1.29 Country of origin
 - 1.30 Country of origin
 - 1.31 Country of origin
 - 1.32 Country of origin
 - 1.33 Country of origin
 - 1.34 Country of origin
 - 1.35 Country of origin
 - 1.36 Country of origin
 - 1.37 Country of origin
 - 1.38 Country of origin
 - 1.39 Country of origin
 - 1.40 Country of origin
 - 1.41 Country of origin
 - 1.42 Country of origin
 - 1.43 Country of origin
 - 1.44 Country of origin
 - 1.45 Country of origin
 - 1.46 Country of origin
 - 1.47 Country of origin
 - 1.48 Country of origin
 - 1.49 Country of origin
 - 1.50 Country of origin
 - 1.51 Country of origin
 - 1.52 Country of origin
 - 1.53 Country of origin
 - 1.54 Country of origin
 - 1.55 Country of origin
 - 1.56 Country of origin
 - 1.57 Country of origin
 - 1.58 Country of origin
 - 1.59 Country of origin
 - 1.60 Country of origin
 - 1.61 Country of origin
 - 1.62 Country of origin
 - 1.63 Country of origin
 - 1.64 Country of origin
 - 1.65 Country of origin
 - 1.66 Country of origin
 - 1.67 Country of origin
 - 1.68 Country of origin
 - 1.69 Country of origin
 - 1.70 Country of origin
 - 1.71 Country of origin
 - 1.72 Country of origin
 - 1.73 Country of origin
 - 1.74 Country of origin
 - 1.75 Country of origin
 - 1.76 Country of origin
 - 1.77 Country of origin
 - 1.78 Country of origin
 - 1.79 Country of origin
 - 1.80 Country of origin
 - 1.81 Country of origin
 - 1.82 Country of origin
 - 1.83 Country of origin
 - 1.84 Country of origin
 - 1.85 Country of origin
 - 1.86 Country of origin
 - 1.87 Country of origin
 - 1.88 Country of origin
 - 1.89 Country of origin
 - 1.90 Country of origin
 - 1.91 Country of origin
 - 1.92 Country of origin
 - 1.93 Country of origin
 - 1.94 Country of origin
 - 1.95 Country of origin
 - 1.96 Country of origin
 - 1.97 Country of origin
 - 1.98 Country of origin
 - 1.99 Country of origin
 - 1.100 Country of origin
- 2. IDENTIFICATION AND CONTROL:** This section includes fields for:
 - 2.1 Office of origin
 - 2.2 Location of goods
 - 2.3 Mode of transport
 - 2.4 Mode of transport
 - 2.5 Place of origin
 - 2.6 Place of origin
 - 2.7 Place of origin
 - 2.8 Place of origin
 - 2.9 Place of origin
 - 2.10 Place of origin
 - 2.11 Place of origin
 - 2.12 Place of origin
 - 2.13 Place of origin
 - 2.14 Place of origin
 - 2.15 Place of origin
 - 2.16 Place of origin
 - 2.17 Place of origin
 - 2.18 Place of origin
 - 2.19 Place of origin
 - 2.20 Place of origin
 - 2.21 Place of origin
 - 2.22 Place of origin
 - 2.23 Place of origin
 - 2.24 Place of origin
 - 2.25 Place of origin
 - 2.26 Place of origin
 - 2.27 Place of origin
 - 2.28 Place of origin
 - 2.29 Place of origin
 - 2.30 Place of origin
 - 2.31 Place of origin
 - 2.32 Place of origin
 - 2.33 Place of origin
 - 2.34 Place of origin
 - 2.35 Place of origin
 - 2.36 Place of origin
 - 2.37 Place of origin
 - 2.38 Place of origin
 - 2.39 Place of origin
 - 2.40 Place of origin
 - 2.41 Place of origin
 - 2.42 Place of origin
 - 2.43 Place of origin
 - 2.44 Place of origin
 - 2.45 Place of origin
 - 2.46 Place of origin
 - 2.47 Place of origin
 - 2.48 Place of origin
 - 2.49 Place of origin
 - 2.50 Place of origin
 - 2.51 Place of origin
 - 2.52 Place of origin
 - 2.53 Place of origin
 - 2.54 Place of origin
 - 2.55 Place of origin
 - 2.56 Place of origin
 - 2.57 Place of origin
 - 2.58 Place of origin
 - 2.59 Place of origin
 - 2.60 Place of origin
 - 2.61 Place of origin
 - 2.62 Place of origin
 - 2.63 Place of origin
 - 2.64 Place of origin
 - 2.65 Place of origin
 - 2.66 Place of origin
 - 2.67 Place of origin
 - 2.68 Place of origin
 - 2.69 Place of origin
 - 2.70 Place of origin
 - 2.71 Place of origin
 - 2.72 Place of origin
 - 2.73 Place of origin
 - 2.74 Place of origin
 - 2.75 Place of origin
 - 2.76 Place of origin
 - 2.77 Place of origin
 - 2.78 Place of origin
 - 2.79 Place of origin
 - 2.80 Place of origin
 - 2.81 Place of origin
 - 2.82 Place of origin
 - 2.83 Place of origin
 - 2.84 Place of origin
 - 2.85 Place of origin
 - 2.86 Place of origin
 - 2.87 Place of origin
 - 2.88 Place of origin
 - 2.89 Place of origin
 - 2.90 Place of origin
 - 2.91 Place of origin
 - 2.92 Place of origin
 - 2.93 Place of origin
 - 2.94 Place of origin
 - 2.95 Place of origin
 - 2.96 Place of origin
 - 2.97 Place of origin
 - 2.98 Place of origin
 - 2.99 Place of origin
 - 2.100 Place of origin
- 3. IDENTIFICATION AND CONTROL:** This section includes fields for:
 - 3.1 Office of origin
 - 3.2 Location of goods
 - 3.3 Mode of transport
 - 3.4 Mode of transport
 - 3.5 Place of origin
 - 3.6 Place of origin
 - 3.7 Place of origin
 - 3.8 Place of origin
 - 3.9 Place of origin
 - 3.10 Place of origin
 - 3.11 Place of origin
 - 3.12 Place of origin
 - 3.13 Place of origin
 - 3.14 Place of origin
 - 3.15 Place of origin
 - 3.16 Place of origin
 - 3.17 Place of origin
 - 3.18 Place of origin
 - 3.19 Place of origin
 - 3.20 Place of origin
 - 3.21 Place of origin
 - 3.22 Place of origin
 - 3.23 Place of origin
 - 3.24 Place of origin
 - 3.25 Place of origin
 - 3.26 Place of origin
 - 3.27 Place of origin
 - 3.28 Place of origin
 - 3.29 Place of origin
 - 3.30 Place of origin
 - 3.31 Place of origin
 - 3.32 Place of origin
 - 3.33 Place of origin
 - 3.34 Place of origin
 - 3.35 Place of origin
 - 3.36 Place of origin
 - 3.37 Place of origin
 - 3.38 Place of origin
 - 3.39 Place of origin
 - 3.40 Place of origin
 - 3.41 Place of origin
 - 3.42 Place of origin
 - 3.43 Place of origin
 - 3.44 Place of origin
 - 3.45 Place of origin
 - 3.46 Place of origin
 - 3.47 Place of origin
 - 3.48 Place of origin
 - 3.49 Place of origin
 - 3.50 Place of origin
 - 3.51 Place of origin
 - 3.52 Place of origin
 - 3.53 Place of origin
 - 3.54 Place of origin
 - 3.55 Place of origin
 - 3.56 Place of origin
 - 3.57 Place of origin
 - 3.58 Place of origin
 - 3.59 Place of origin
 - 3.60 Place of origin
 - 3.61 Place of origin
 - 3.62 Place of origin
 - 3.63 Place of origin
 - 3.64 Place of origin
 - 3.65 Place of origin
 - 3.66 Place of origin
 - 3.67 Place of origin
 - 3.68 Place of origin
 - 3.69 Place of origin
 - 3.70 Place of origin
 - 3.71 Place of origin
 - 3.72 Place of origin
 - 3.73 Place of origin
 - 3.74 Place of origin
 - 3.75 Place of origin
 - 3.76 Place of origin
 - 3.77 Place of origin
 - 3.78 Place of origin
 - 3.79 Place of origin
 - 3.80 Place of origin
 - 3.81 Place of origin
 - 3.82 Place of origin
 - 3.83 Place of origin
 - 3.84 Place of origin
 - 3.85 Place of origin
 - 3.86 Place of origin
 - 3.87 Place of origin
 - 3.88 Place of origin
 - 3.89 Place of origin
 - 3.90 Place of origin
 - 3.91 Place of origin
 - 3.92 Place of origin
 - 3.93 Place of origin
 - 3.94 Place of origin
 - 3.95 Place of origin
 - 3.96 Place of origin
 - 3.97 Place of origin
 - 3.98 Place of origin
 - 3.99 Place of origin
 - 3.100 Place of origin
- 4. IDENTIFICATION AND CONTROL:** This section includes fields for:
 - 4.1 Office of origin
 - 4.2 Location of goods
 - 4.3 Mode of transport
 - 4.4 Mode of transport
 - 4.5 Place of origin
 - 4.6 Place of origin
 - 4.7 Place of origin
 - 4.8 Place of origin
 - 4.9 Place of origin
 - 4.10 Place of origin
 - 4.11 Place of origin
 - 4.12 Place of origin
 - 4.13 Place of origin
 - 4.14 Place of origin
 - 4.15 Place of origin
 - 4.16 Place of origin
 - 4.17 Place of origin
 - 4.18 Place of origin
 - 4.19 Place of origin
 - 4.20 Place of origin
 - 4.21 Place of origin
 - 4.22 Place of origin
 - 4.23 Place of origin
 - 4.24 Place of origin
 - 4.25 Place of origin
 - 4.26 Place of origin
 - 4.27 Place of origin
 - 4.28 Place of origin
 - 4.29 Place of origin
 - 4.30 Place of origin
 - 4.31 Place of origin
 - 4.32 Place of origin
 - 4.33 Place of origin
 - 4.34 Place of origin
 - 4.35 Place of origin
 - 4.36 Place of origin
 - 4.37 Place of origin
 - 4.38 Place of origin
 - 4.39 Place of origin
 - 4.40 Place of origin
 - 4.41 Place of origin
 - 4.42 Place of origin
 - 4.43 Place of origin
 - 4.44 Place of origin
 - 4.45 Place of origin
 - 4.46 Place of origin
 - 4.47 Place of origin
 - 4.48 Place of origin
 - 4.49 Place of origin
 - 4.50 Place of origin
 - 4.51 Place of origin
 - 4.52 Place of origin
 - 4.53 Place of origin
 - 4.54 Place of origin
 - 4.55 Place of origin
 - 4.56 Place of origin
 - 4.57 Place of origin
 - 4.58 Place of origin
 - 4.59 Place of origin
 - 4.60 Place of origin
 - 4.61 Place of origin
 - 4.62 Place of origin
 - 4.63 Place of origin
 - 4.64 Place of origin
 - 4.65 Place of origin
 - 4.66 Place of origin
 - 4.67 Place of origin
 - 4.68 Place of origin
 - 4.69 Place of origin
 - 4.70 Place of origin
 - 4.71 Place of origin
 - 4.72 Place of origin
 - 4.73 Place of origin
 - 4.74 Place of origin
 - 4.75 Place of origin
 - 4.76 Place of origin
 - 4.77 Place of origin
 - 4.78 Place of origin
 - 4.79 Place of origin
 - 4.80 Place of origin
 - 4.81 Place of origin
 - 4.82 Place of origin
 - 4.83 Place of origin
 - 4.84 Place of origin
 - 4.85 Place of origin
 - 4.86 Place of origin
 - 4.87 Place of origin
 - 4.88 Place of origin
 - 4.89 Place of origin
 - 4.90 Place of origin
 - 4.91 Place of origin
 - 4.92 Place of origin
 - 4.93 Place of origin
 - 4.94 Place of origin
 - 4.95 Place of origin
 - 4.96 Place of origin
 - 4.97 Place of origin
 - 4.98 Place of origin
 - 4.99 Place of origin
 - 4.100 Place of origin

Rec:19
Mode of Transport

Rec:16
UN/Locode

ISO Country
Code

Rec: 17
Payment
Terms

The image shows a screenshot of a PDF form titled "EUROPEAN COMMUNITY EXPORT CUSTOMS DECLARATION" within a PDF viewer. The form is divided into several sections with numbered fields. Blue callout boxes point to specific fields, identifying them with UN/EDIFACT codes and descriptions. The fields include:

- 1 Consignor / Exporter
- 3 Forms
- 4 Loading lists
- 5 Items
- 6 Total packages
- 7 Reference number
- 9 Person responsible for financial settlement
- 10 Country first
- 11 Trading
- 13 CAP
- 14 Agent / Representative
- 15 Country of despatch / export
- 16 Country of origin
- 17 Country of final destination
- 18 Identity and nationality of means of transport
- 19 Ctr.
- 20 Delivery terms
- 21 Identity and nationality of active means of transport crossing the border
- 22 Currency and total amount invoiced
- 25 Mode of transport
- 26 Inland mode
- 27 Place of loading
- 28 Financial and banking data
- 29 Office of exit
- 30 Location of goods
- 31 Marks and numbers - Container No(s) - Numbers and kind
- 32 Article No.
- 33 Commodity code
- 34 Country origin code
- 35 Gross mass (kg)

Rec: 28
Means of
Transport

Rec: 21
Package Codes

Rec:9
Currency Code

Commodity
Code

Rec:20 Units of
Measurement



Electronic Document Exchange XML or UN/EDIFACT

UN/EDIFACT layout key for 'EUROPEAN COMMUNITY EXPORT CUSTOMS DECLARATION'. The form is divided into several numbered sections (1-14) with corresponding data fields. Section 1 includes '1 Declaration number', '2 Country code', and '3 Person responsible for declaration'. Section 2 includes '4 Declaration number', '5 Country code', and '6 Country of origin'. Section 3 includes '7 Country of origin', '8 Country of destination', and '9 Country of transit'. Section 4 includes '10 Country of transit', '11 Place of loading', and '12 Place of unloading'. Section 5 includes '13 Place of loading', '14 Place of unloading', and '15 Place of transit'. Section 6 includes '16 Country of origin', '17 Country of destination', and '18 Country of transit'. Section 7 includes '19 Country of origin', '20 Country of destination', and '21 Country of transit'. Section 8 includes '22 Country of origin', '23 Country of destination', and '24 Country of transit'. Section 9 includes '25 Country of origin', '26 Country of destination', and '27 Country of transit'. Section 10 includes '28 Country of origin', '29 Country of destination', and '30 Country of transit'. Section 11 includes '31 Country of origin', '32 Country of destination', and '33 Country of transit'. Section 12 includes '34 Country of origin', '35 Country of destination', and '36 Country of transit'. Section 13 includes '37 Country of origin', '38 Country of destination', and '39 Country of transit'. Section 14 includes '40 Country of origin', '41 Country of destination', and '42 Country of transit'. The form also includes a table for '14. ACCIDENTAL DEFENSES' and a table for '15. OFFICE OF ORIGIN'. The footer indicates '© United Nations Electronic Trade Documents UN/EDIFACT'.

```

<?xml version="1.0" encoding="UTF-8"?>
<n:Invoice
  xmlns:n="urn:oasis:names:tc:ubl:Invoice:1.0:0.70"
  xsi:schemaLocation="urn:oasis:names:tc:ubl:Invoice:1.0:0.70
    UBL_Library_Op70_Invoice.xsd">
  <cat:ID>token</cat:ID>
  <cat:IssueDate>2003-02-14</cat:IssueDate>
  <n:TaxPointDate>2003-02-14</n:TaxPointDate>
  <cat:BuyerParty>
    <cat:PartyName>
      <cat:Name>Bills
    </cat:PartyName>
  </cat:BuyerParty>
  <cat:SellerParty>
    <cat:PartyName>
      <cat:Name>Joes Office
    </cat:PartyName>
  </cat:SellerParty>
  <cat:InvoiceLine>
    <cat:ID>1</cat:ID>
    <cat:InvoicedQuantity>
      unitCode="5"</cat:InvoicedQuantity>
    <cat:Item>
      <cat:Description>Pencils, box #2
    </cat:Description>
  </cat:InvoiceLine>
</n:Invoice>
```

FIATA Freight Forwarding Instructions (ID: version: 0.4; Form version: 0.45). The form contains the following data:

- Consignee:** LX Logistics mbH, Bismarckstrasse 19, DE-D-69115 Heidelberg, Germany, ID: 323 / 9.
- Consignor:** 88 and co, 32 Rue de stand, FR-92006 Paris, France, ID: CD-3 / 84794, Tax Ref: 333-1948, contact: Philippe Yvon M, TEL: +33450012154.
- Country of origin:** DE, Documentary credit reference: AET-10869, 2003-10-20.
- Goods ready for shipment:** Place: DEHEI Heidelberg, Date: 2004-10-29.
- Mode of transport:** Rail.
- Place of destination:** FRPAR Paris.
- Units and numbers:** 1 ADLMA Trading & Casas, NR: 1-6 Order 0-535/1.
- Description of goods:** Cylinder-Press Completely Assembled.
- Commodity code:** 91452224.
- Gross weight:** 325 KG.
- Volu:** 350 MTQ.

Electronic Edit Form

Paper Document
aligned to UN Layout Key

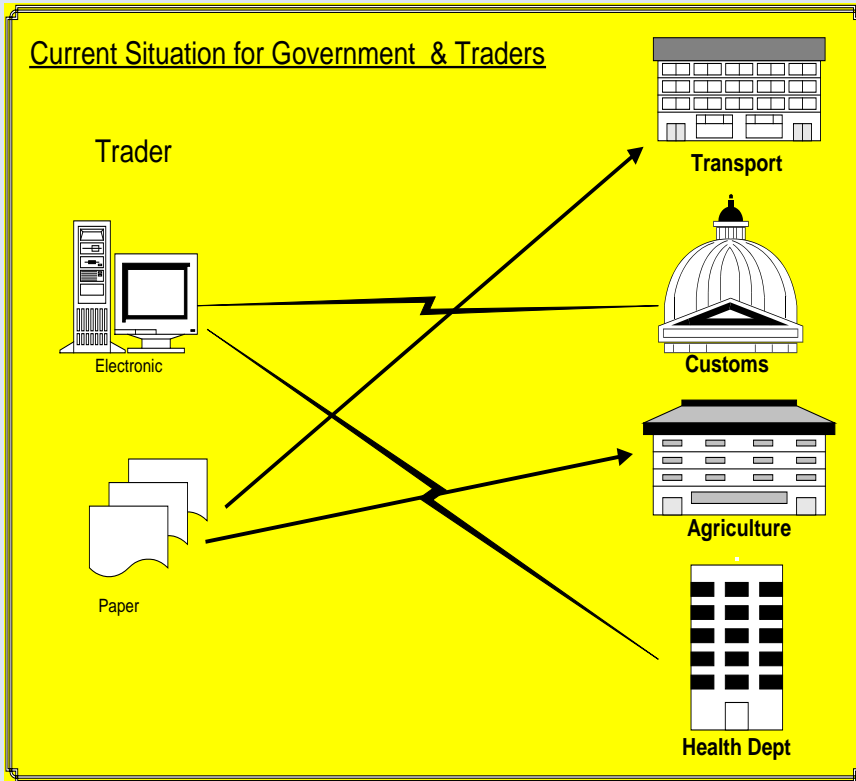


The Core Components Library of UN/CEFACT

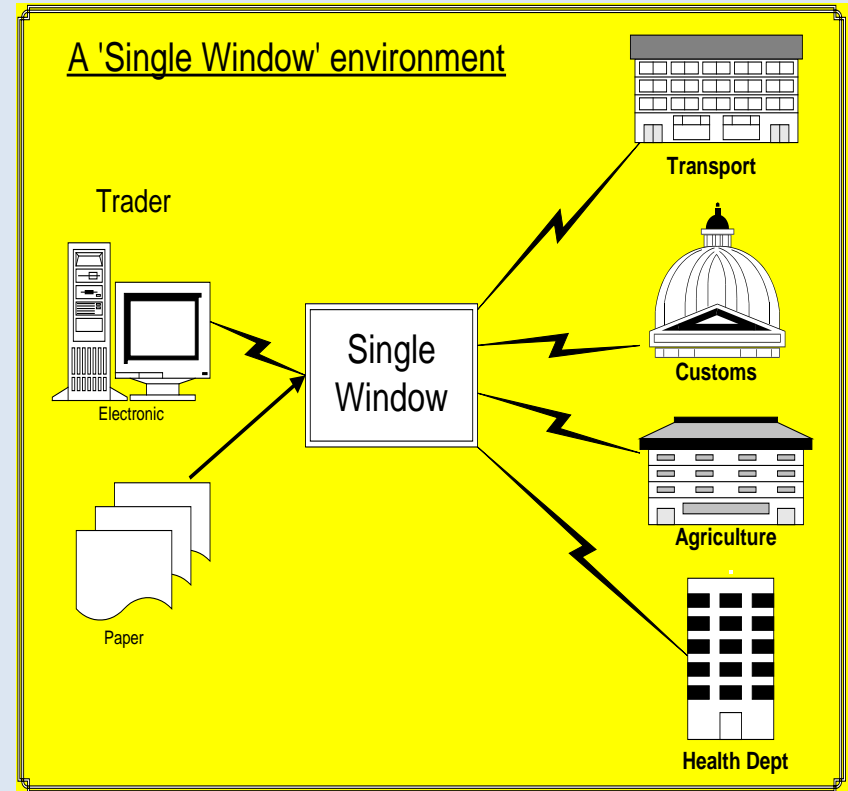
The foundation of the library is the definition of the formats and semantic content of data
Each “Core Component” captures and defines the details of a concrete concept used in business or administration (for example: address)

Single Window Concept

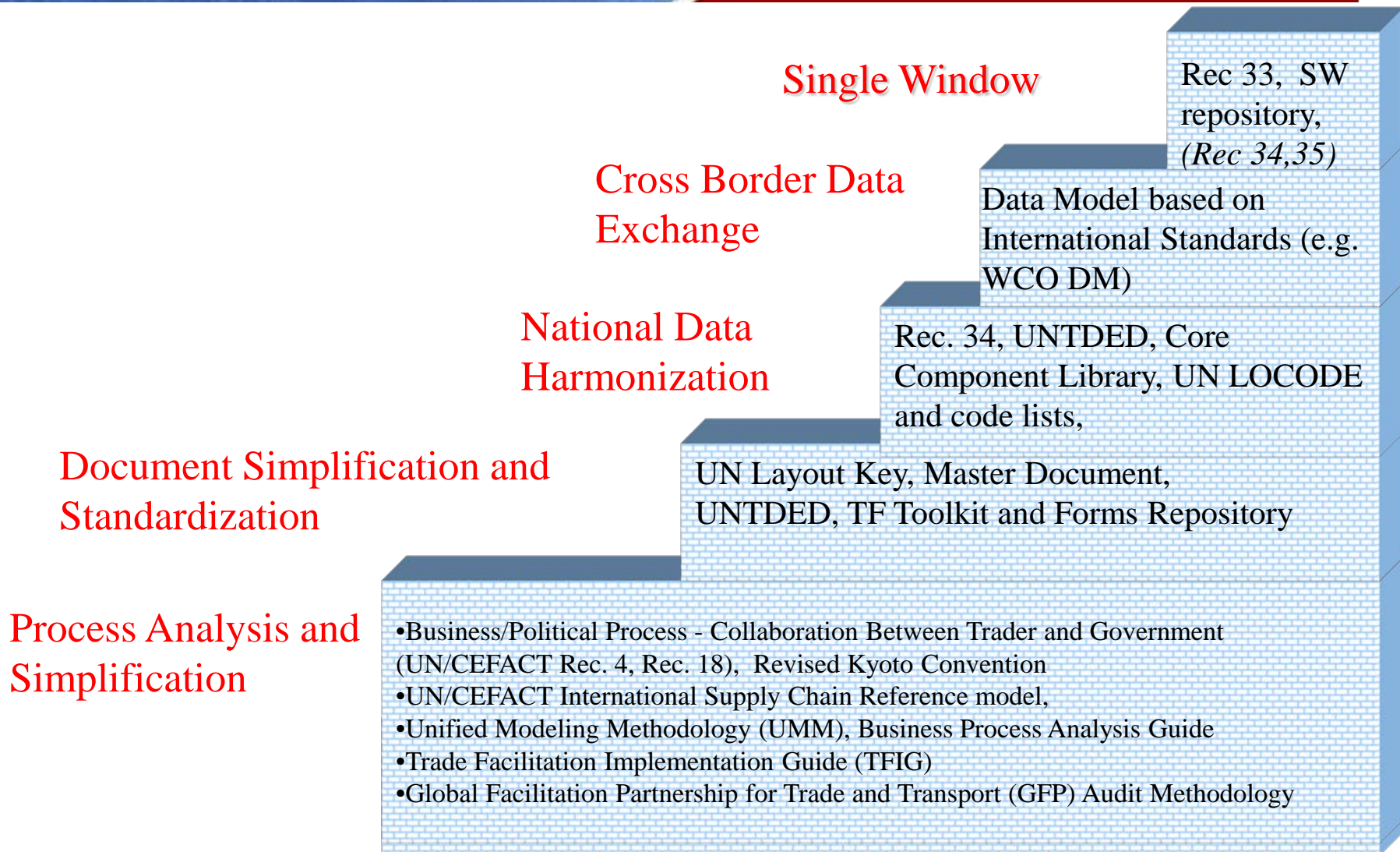
FROM



TO

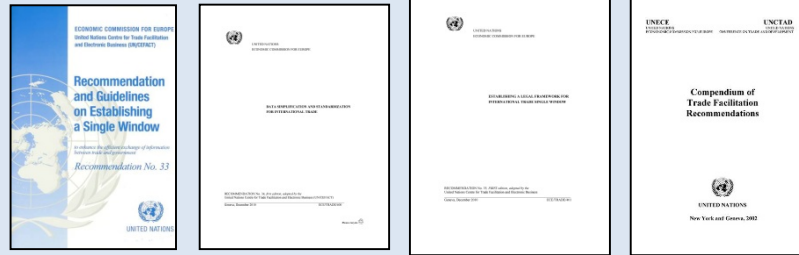


UNECE Recommendation 33

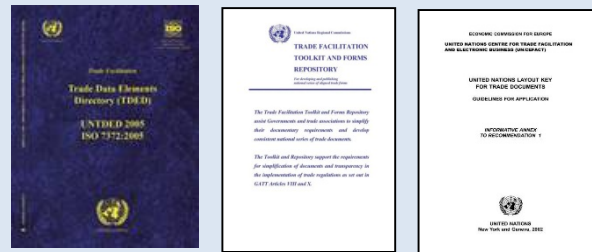


UNECE's Work for SWs

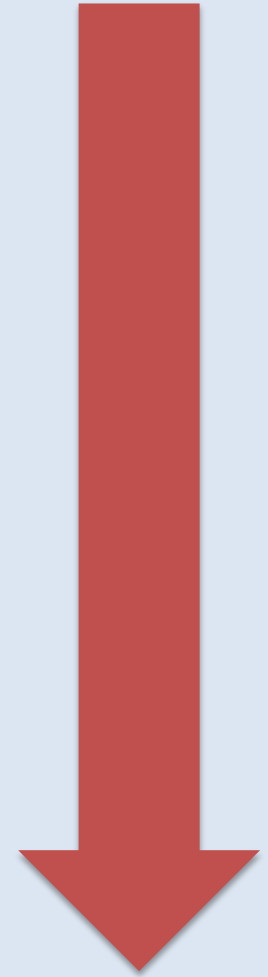
UNECE
Policy Rec.s
UN/CEFACT



UNECE
Standards
UN/CEFACT



UNECE /
UNNExT
Guidelines,
Briefs, Case
Studies

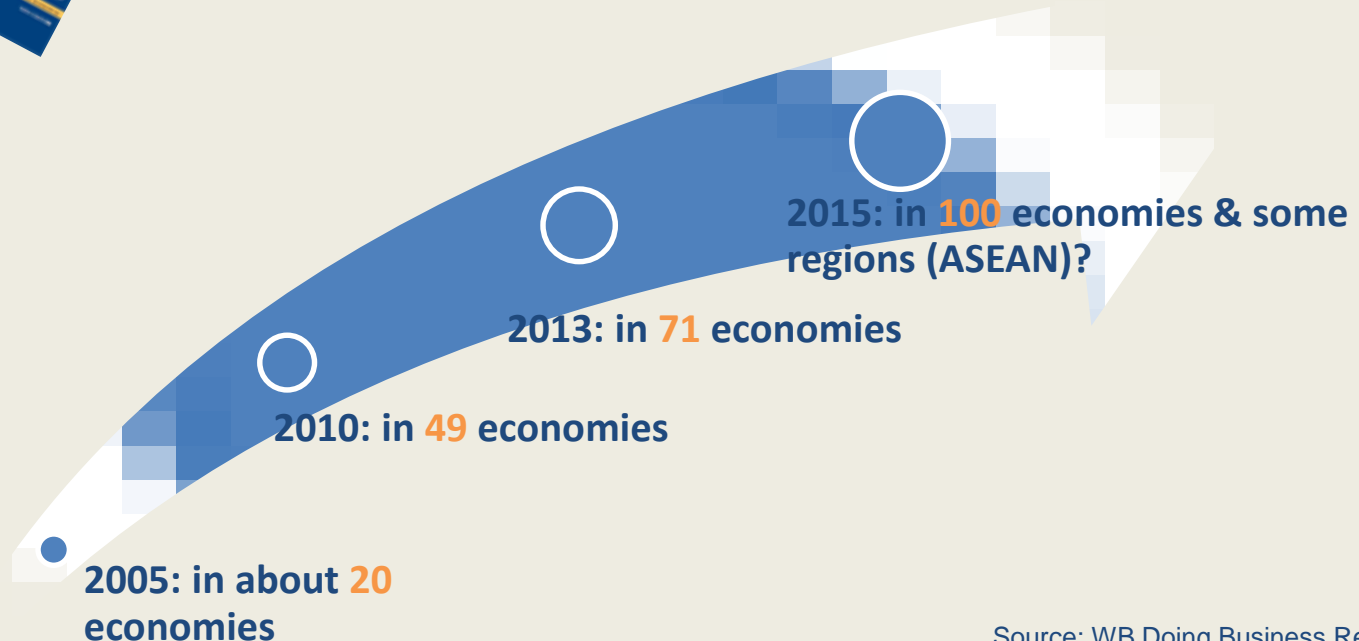


Single Window Success Story



“ Single Windows (SWs) are important **drivers** for the **simplification, harmonization and automation** of trade procedures”

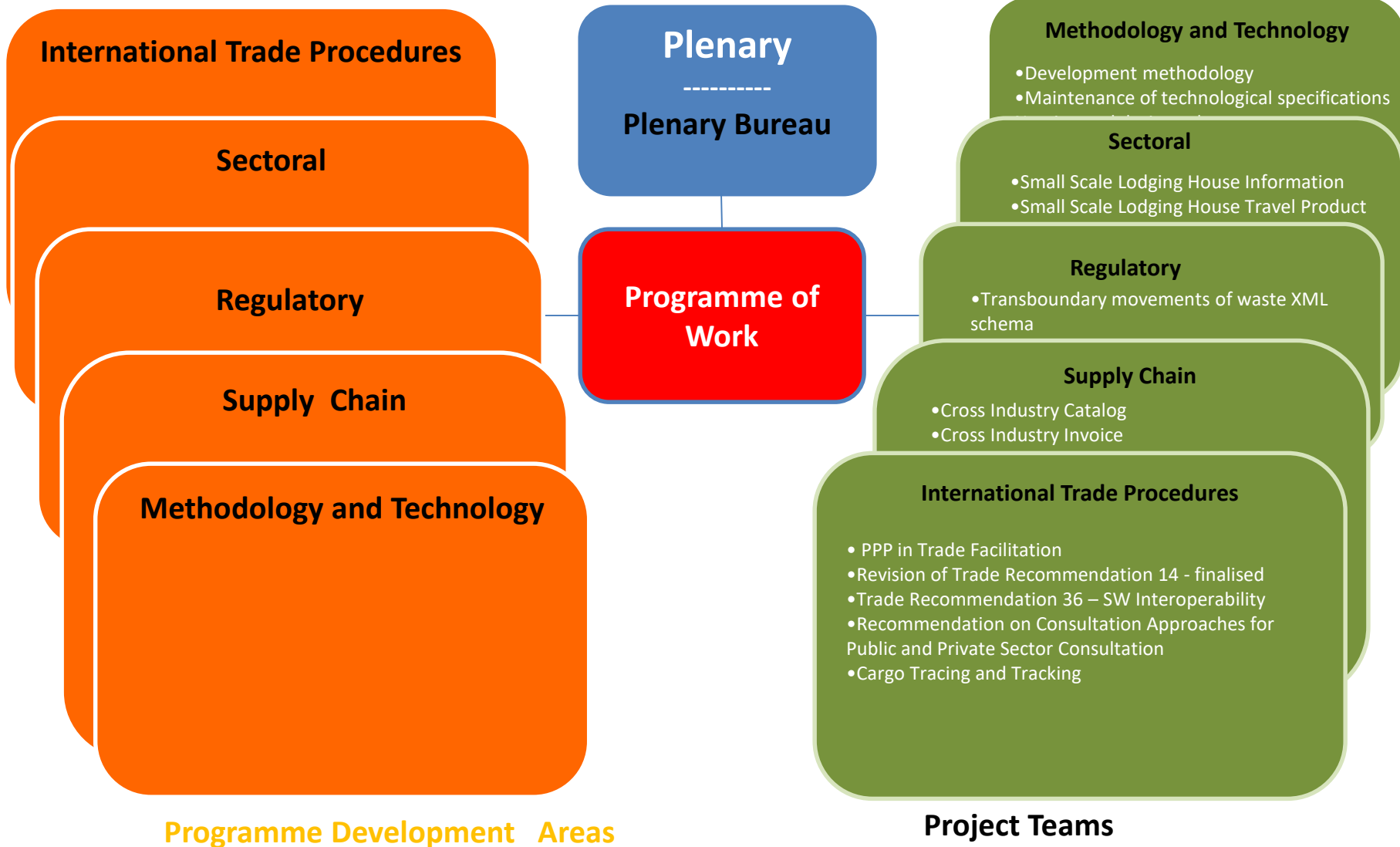
WTO Bali Agreement“ Article 10.4: Members shall endeavor to establish or maintain a single window ..”



Source: WB Doing Business Report 2012/2013, UNECE-UN/CEFACT 2005/2011



Structure





UN/CEFACT Open Development Process



- Project proposals submitted by plenary delegation, an existing project team or a member of the Bureau
- Need support of 3 Heads of Delegation
- Approval by CEFACT Bureau
- Work undertaken by CEFACT Experts (from public and private sector)



- **Inception:** After Bureau's approval, "Call for Participation" sent out by project leader
- **Requirements Gathering:** initial contribution in a comments log
- **Interim Draft:** draft-projects circulated for comments
- **Public Reviews:** minimum 60 days of publication on UN/CEFACT website
- **Project Exit:** Each project goes through a final quality assurance exercise to verify that draft has addressed all the stated requirements. The conclusion of this process is Bureau or Plenary Approval for Publication.
- **Publication:** final drafts published as UNECE documents
- **Maintenance:** changes requested by implementers may lead to new projects

All documents publicly available during the whole process!!



- Recommendations submitted to UN/CEFACT Plenary for approval by member States
- Standards are approved by the Bureau within the context of the Programme of Work
- All UN member States can participate



- Concept of Head of Delegation (HOD) to UN/CEFACT
- Experts must contact their HOD to request participation and if approved, are nominated by HOD
- Experts can participate in specific projects
- Experts must agree to the UN/CEFACT IPR Policy and Code of Conduct



- Support the overall operation of UN/CEFACT within the UN Framework
- Organise UN/CEFACT Forums and Plenary
- Support the bi-weekly conference calls of the Bureau
- Publish EDIFACT, CCL and LOCODE Directories
- Maintain UN/LOCODE
- Entry Point for EDIFACT



- Support specific projects (e.g. Revision of Rec 4, development of Rec 36, Rec 40, etc)
- Manage the UN/CEFACT Project database in Confluence –project leaders maintain the project information
- Outreach, support and promotion to UN member States
- Prepare brochures and publications
- Develop of user Guides
- Liaise with other international organizations on TF
- Etc

**UNECE -
UN/CEFACT**

**UNECE in
partnership with
other organizations**

**UNCTAD,WB,
UNIDO, etc**

**Development of
Recommendation
/ Standards
Development and
Maintenance**

Outreach / Support
(Helping countries
implement our
instruments and
elaborate a national
TF strategy)

**Long-term Technical
Assistance**
(Donors decide what
is to be done) -
UNECE does not
provide long term TA



UNECE's role is to create the standards through participation of UN member States and the business community in UN/CEFACT Working Groups. We engage in an active Capacity Building programme to help countries understand how best to implement these standards, given their unique needs, priorities and resources while other organizations assist in long-term technical assistance (UNCTAD, WB etc). The WTO sets the rules

Welcome to the **Trade Facilitation Implementation Guide**



Domains



Itineraries



Instruments



Organizations





United Nations Economic Commission for Europe
United Nations Centre for Trade Facilitation and Electronic Business





All UNECE and UN/CEFACT
Recommendations, codes, standards and
publications are available for free on our
website at:

- www.unece.org/
- www.unece.org/trade
- www.unece.org/cefact/
- Tfig.unece.org

E-mail: maria.ceccarelli@unece.org