



United Nations Economic Commission for Europe
United Nations Centre for Trade Facilitation and Electronic Business
UN/CEFACT

Centre des Nations Unies pour la Facilitation du Commerce et les transactions électroniques (CEFACT-ONU)

Un cadre pour les normes mondiales

Maria Rosaria Ceccarelli

Division de la Coopération économique

et du Commerce (UNECE)



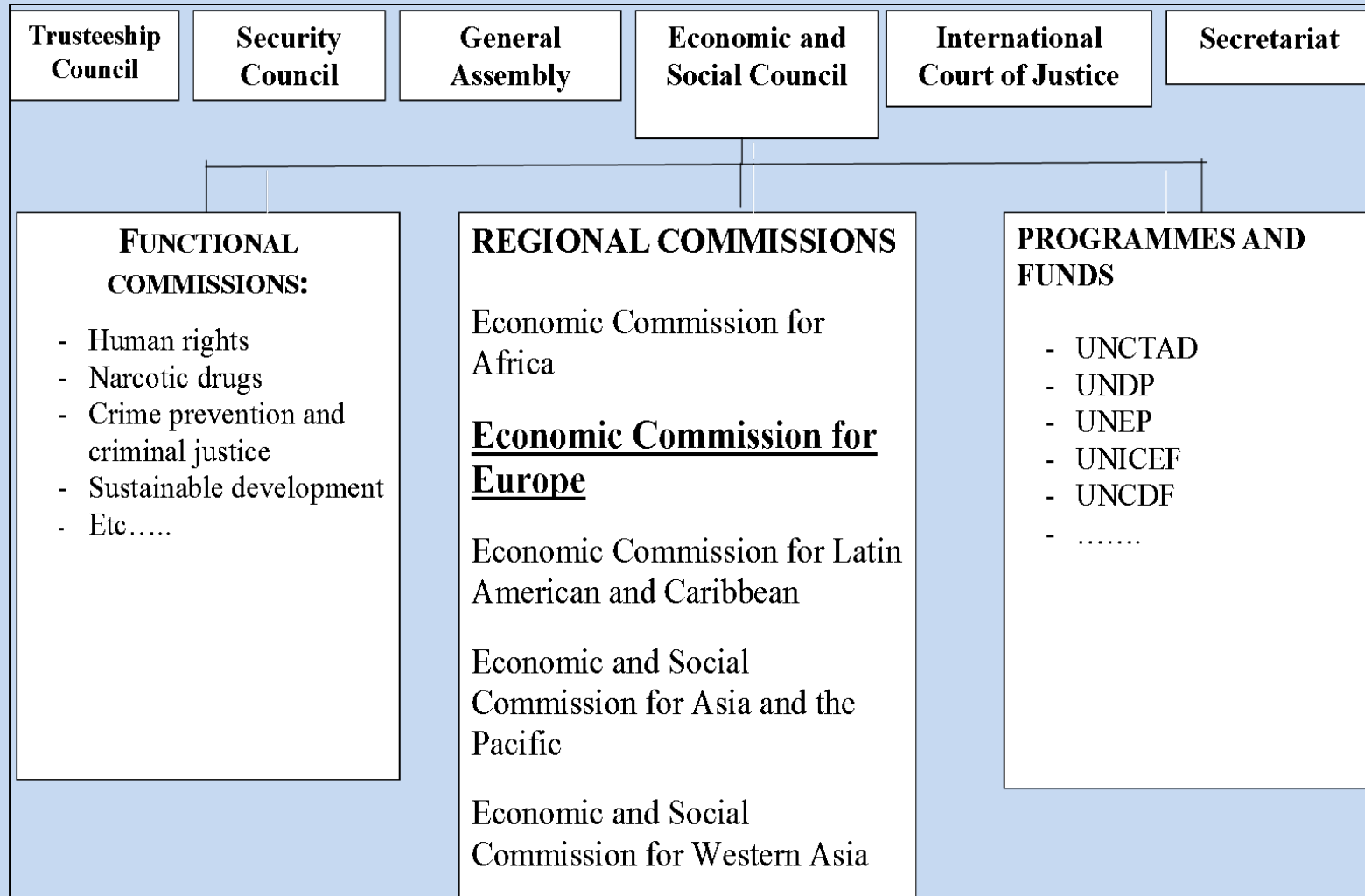
- UNECE et facilitation du commerce
- Mission du CEFACT-ONU
- Recommandations de la UNECE et les normes du CEFACT-ONU
- Développement de projet et processus d'abrogation
- Comment participer



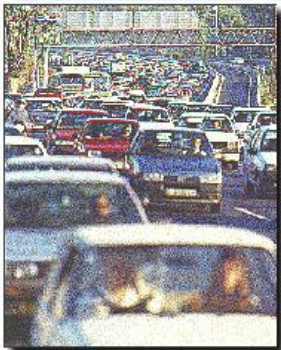
UNECE



Commission économique pour l' Europe des Nations Unies (UNECE)



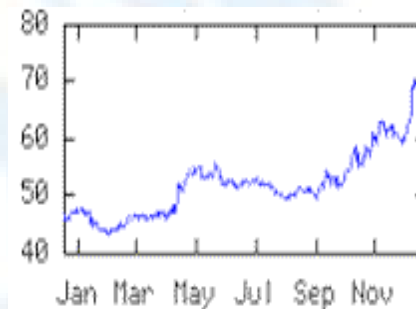
UNECE et ses domaines de travail



Transport



Economic cooperation



Statistics



Sustainable energy



Housing



Trade



Environmental policy



- L'un des objectifs majeurs de la UNECE est l'intégration économique
- La facilitation du commerce et le transfert électronique de données à usage commercial sont les instruments principaux de la UNECE pour répondre à son objectif clé



Objectifs

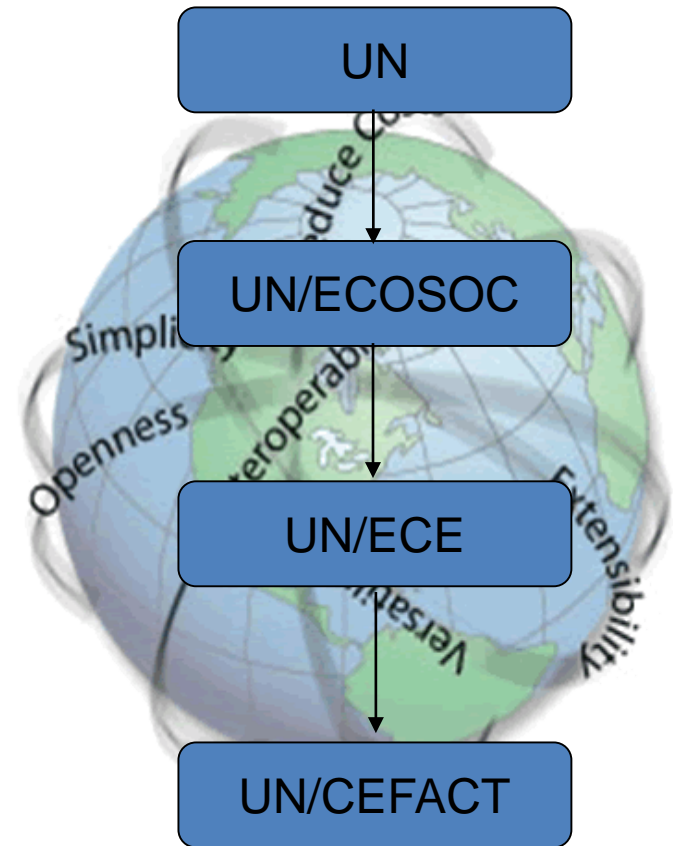
- Simples, transparents et efficaces pour les échanges mondiaux.
- Echanges d'information efficaces et automatisés

Résultats

- Facilitation du commerce mondial et transactions électroniques des recommandations et normes

Moyens

- Partenariat privé-public – plus de 200 experts gouvernementaux et commerciaux
- TeleConference chaque semaine et deux Forums par années



Global Remit



- La simplification, la normalisation et l'harmonisation des procédures et des flux d'informations y afférents, qui participent au mouvement des marchandises entre le vendeur et l'acheteur et au paiement de celles-ci
- Cette mission sous-entend que non seulement le mouvement physique des marchandises, mais également la circulation des informations y afférentes, ont leur importance dans la chaîne d'approvisionnement. Elle englobe également toutes les organisations gouvernementales qui interviennent dans le transit des marchandises, ainsi que les différents partenaires commerciaux qui participent aux transactions et au mouvement des marchandises.



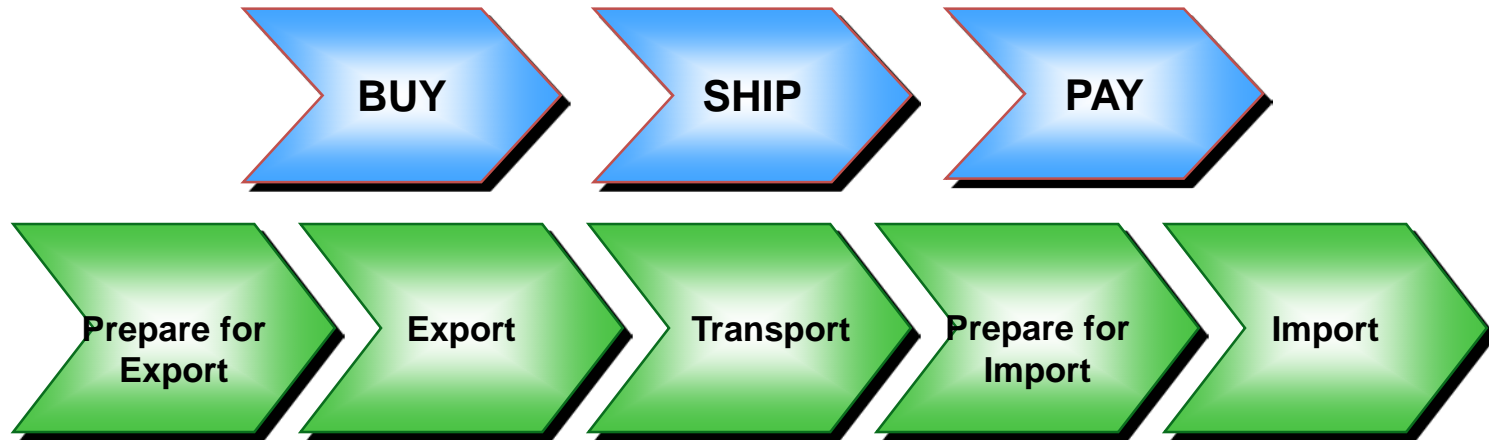
United Nations Economic Commission for Europe
United Nations Centre for Trade Facilitation and Electronic Business

UN/CEFACT

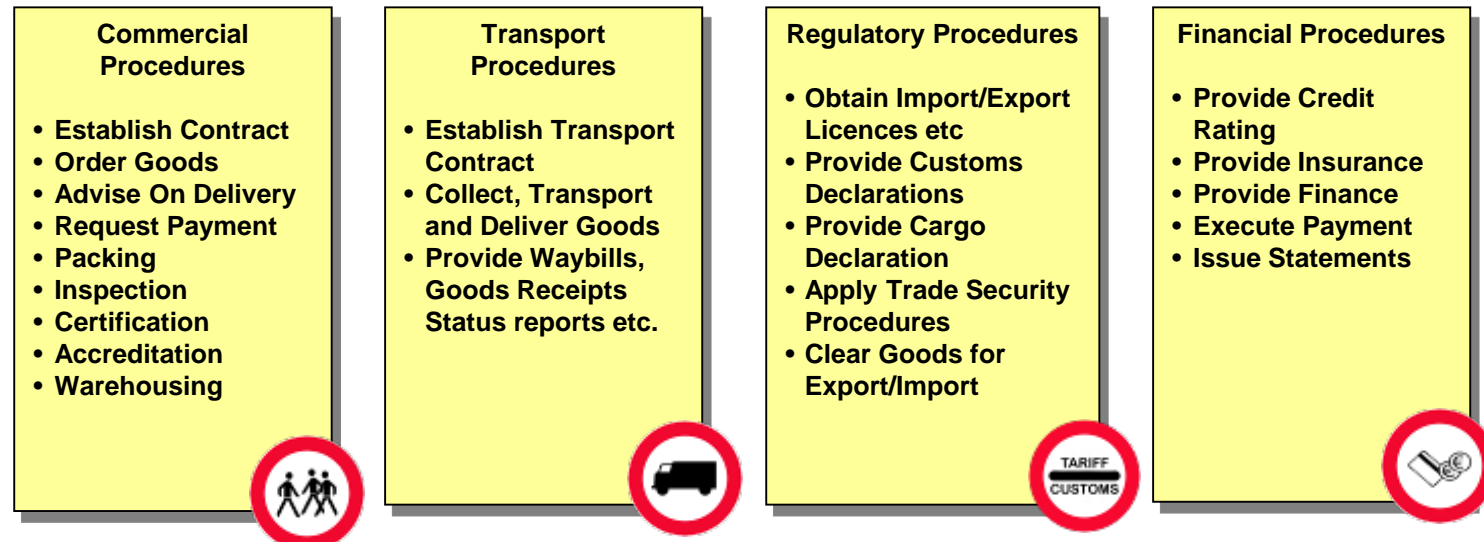
Facilitation du commerce

Faciliter – pour rendre plus facile, plus rapide

Les principes fondamentaux de la facilitation des échanges sont la transparence, la simplification, l'harmonisation et la normalisation.



INVOLVES







FACILITATION DU COMMERCE

Simplification

Processus d'élimination de tous les éléments superflus et de toutes les redondances en matière de formalités, procédures et processus commerciaux

Harmonisation

Alignement des procédures, des opérations et des documents nationaux au moyen de conventions, de normes et de pratiques internationales

Normalisation

Processus qui consiste à élaborer des formats de pratiques et de procédures, de documents et de renseignements



Résultats du CEFACT-ONU



Avec quoi?

- **Recommandations et normes adoptées au niveau mondial**
- **Bibliothèques communes**
- **Répertoires communs**





Recommandations sur la facilitation commerce (plus de 30 Recommandations)

- Recommandation 1 - Directives concernant l'application de la Formule-cadre des Nations Unies pour les documents commerciaux (UN Layout Key) (ISO 6422)
- Recommandation 4 – Structures de la facilitation du commerce
- Recommandation 18 – Mesures de la facilitation du commerce
- Recommandation 25 - UN/EDIFACT (ISO 9735)
- Recommandation 33 - Guichet Unique

Plus:

- Listes de codes, telle que la Recommandation 16 - LOCODE

Nombreuses normes de l'ISO sont converties dans les négociations de l'OMC sur la facilitation du commerce



UN Layout Key

- Les dispositions de la Convention révisée de Kyoto, l'Accord de l'OMC sur la facilitation des échanges
- Base de la Commission européenne et le document administratif unique (DAU)
- Adoptée par une grande majorité des Organisations internationales

The diagram illustrates the layout of a European Community Export Customs Declaration form, titled 'UNE Docs EUROPEAN COMMUNITY EXPORT CUSTOMS DECLARATION A. OFFICE OF ORIGIN REPORT'. The form is divided into several sections:

- 1. DECLARATION:** Includes fields for 1. Declaration No., 2. Party, 3. Issuing Office, 4. Date, 5. Trade partner, and 6. Reference number.
- 2. Consignor:** Includes 7. Person responsible for actual submission, 8. Consignor No., 9. Country No., 10. Trade No., 11. Trade No. (containing 'Country', 'Trade', and 'Party' sub-fields), and 12. CIP.
- 3. Consignee:** Includes 13. Consignee Representative No., 14. Country of dispatch input, 15. C. Incoterms Code, 16. Country of origin Code, 17. Country of final destination, and 18. Country of origin.
- 4. Consignee and authority of means of transport of dispatch:** Includes 19. Consignee No., 20. Consignee No. (containing 'Country' and 'Party' sub-fields), 21. Consignee and authority of means of transport of dispatch, 22. Consignee and authority of means of transport of dispatch, 23. Consignee and authority of means of transport of dispatch, 24. Consignee and authority of means of transport of dispatch, 25. Consignee and authority of means of transport of dispatch, 26. Consignee and authority of means of transport of dispatch, 27. Consignee and authority of means of transport of dispatch, 28. Consignee and authority of means of transport of dispatch, 29. Consignee and authority of means of transport of dispatch, 30. Consignee and authority of means of transport of dispatch, 31. Consignee and authority of means of transport of dispatch, 32. Consignee and authority of means of transport of dispatch, 33. Consignee and authority of means of transport of dispatch, 34. Consignee and authority of means of transport of dispatch, 35. Consignee and authority of means of transport of dispatch, 36. Consignee and authority of means of transport of dispatch, 37. Consignee and authority of means of transport of dispatch, 38. Consignee and authority of means of transport of dispatch, 39. Consignee and authority of means of transport of dispatch, 40. Consignee and authority of means of transport of dispatch, 41. Consignee and authority of means of transport of dispatch, 42. Consignee and authority of means of transport of dispatch, 43. Consignee and authority of means of transport of dispatch, 44. Consignee and authority of means of transport of dispatch, 45. Consignee and authority of means of transport of dispatch, 46. Consignee and authority of means of transport of dispatch, 47. Consignee and authority of means of transport of dispatch, 48. Consignee and authority of means of transport of dispatch, 49. Consignee and authority of means of transport of dispatch, 50. Consignee and authority of means of transport of dispatch, 51. Consignee and authority of means of transport of dispatch, 52. Consignee and authority of means of transport of dispatch, 53. Consignee and authority of means of transport of dispatch, 54. Consignee and authority of means of transport of dispatch, 55. Consignee and authority of means of transport of dispatch, 56. Consignee and authority of means of transport of dispatch, 57. Consignee and authority of means of transport of dispatch, 58. Consignee and authority of means of transport of dispatch, 59. Consignee and authority of means of transport of dispatch, 60. Consignee and authority of means of transport of dispatch, 61. Consignee and authority of means of transport of dispatch, 62. Consignee and authority of means of transport of dispatch, 63. Consignee and authority of means of transport of dispatch, 64. Consignee and authority of means of transport of dispatch, 65. Consignee and authority of means of transport of dispatch, 66. Consignee and authority of means of transport of dispatch, 67. Consignee and authority of means of transport of dispatch, 68. Consignee and authority of means of transport of dispatch, 69. Consignee and authority of means of transport of dispatch, 70. Consignee and authority of means of transport of dispatch, 71. Consignee and authority of means of transport of dispatch, 72. Consignee and authority of means of transport of dispatch, 73. Consignee and authority of means of transport of dispatch, 74. Consignee and authority of means of transport of dispatch, 75. Consignee and authority of means of transport of dispatch, 76. Consignee and authority of means of transport of dispatch, 77. Consignee and authority of means of transport of dispatch, 78. Consignee and authority of means of transport of dispatch, 79. Consignee and authority of means of transport of dispatch, 80. Consignee and authority of means of transport of dispatch, 81. Consignee and authority of means of transport of dispatch, 82. Consignee and authority of means of transport of dispatch, 83. Consignee and authority of means of transport of dispatch, 84. Consignee and authority of means of transport of dispatch, 85. Consignee and authority of means of transport of dispatch, 86. Consignee and authority of means of transport of dispatch, 87. Consignee and authority of means of transport of dispatch, 88. Consignee and authority of means of transport of dispatch, 89. Consignee and authority of means of transport of dispatch, 90. Consignee and authority of means of transport of dispatch, 91. Consignee and authority of means of transport of dispatch, 92. Consignee and authority of means of transport of dispatch, 93. Consignee and authority of means of transport of dispatch, 94. Consignee and authority of means of transport of dispatch, 95. Consignee and authority of means of transport of dispatch, 96. Consignee and authority of means of transport of dispatch, 97. Consignee and authority of means of transport of dispatch, 98. Consignee and authority of means of transport of dispatch, 99. Consignee and authority of means of transport of dispatch, 100. Consignee and authority of means of transport of dispatch.

Rec:19
Mode de transport

Rec:16
UN/LOCODE

Code de pays ISO

Rec: 17
Moyens de paiements

The image shows a PDF form titled "EUROPEAN COMMUNITY EXPORT CUSTOMS DECLARATION" displayed in a software application. The form is divided into several sections with numbered fields. Blue callout boxes point to specific fields, identifying them with Rec numbers and descriptions. The fields include:

- 1 Consignor / Exporter
- 3 Forms
- 4 Loading lists
- 5 Items
- 6 Total packages
- 7 Reference number
- 9 Person responsible for financial settlement
- 10 Country first
- 11 Trading
- 13 CAP
- 14 Agent / Representative
- 15 Country of despatch / export
- 16 Country of origin
- 17 Country of final destination
- 18 Identity and nationality of means of transport at departure
- 19 Ctr.
- 20 Delivery terms
- 21 Identity and nationality of active means of transport crossing the border
- 22 Currency and total amount invoiced
- 23 Ex
- 25 Mode of transport
- 26 Inland mode
- 27 Place of loading
- 28 Financial and banking data
- 29 Office of exit
- 30 Location of goods
- 31 Marks and numbers - Container No(s) - Numbers and kind
- 32 Article No.
- 33 Commodity code
- 34 Country origin code
- 35 Gross mass (kg)

Rec:9
Code de la devise

Code de
marchandise

Rec: 28
Moyens de
transport

Rec: 21
Codes d'emballage

Rec:20 Unité de
mesure



échange
 de documents électroniques.
 XML ou UN/EDIFACT

```
<?xml version="1.0" encoding="UTF-8"?>
<n:Invoice
  xmlns:n="urn:oasis:names:tc:ubl:Invoice:1.0:0.70"
  xsi:schemaLocation="urn:oasis:names:tc:ubl:Invoice:1.0:0.70
  UBL_Library_0p70_Invoice.xsd">
  <cat:ID>token</cat:ID>
  <cat:IssueDate>2003-02-14</cat:IssueDate>
  <n:TaxPointDate>2003-02-14</n:TaxPointDate>
  <cat:BuyerParty>
    <cat:PartyName>
      <cat:Name>Bills
    </cat:PartyName>
  </cat:BuyerParty>
  <cat:SellerParty>
    <cat:ID>
      <cat:PartyName>
        <cat:Name>Joes Office
      </cat:PartyName>
    </cat:ID>
  </cat:SellerParty>
  <cat:InvoiceLine>
    <cat:ID>1</cat:ID>
    <cat:InvoicedQuantity>
      <n:unitCode>token</n:unitCode>5</cat:InvoicedQuantity>
    </cat:Item>
    <cat:Description>Pencils, box #2
  </cat:Description>
  </cat:Item>
  </cat:InvoiceLine>
</n:Invoice>
```

Formulaire éditable
 électronique

Formule-cadre des
 Nations Unies pour les
 documents commerciaux

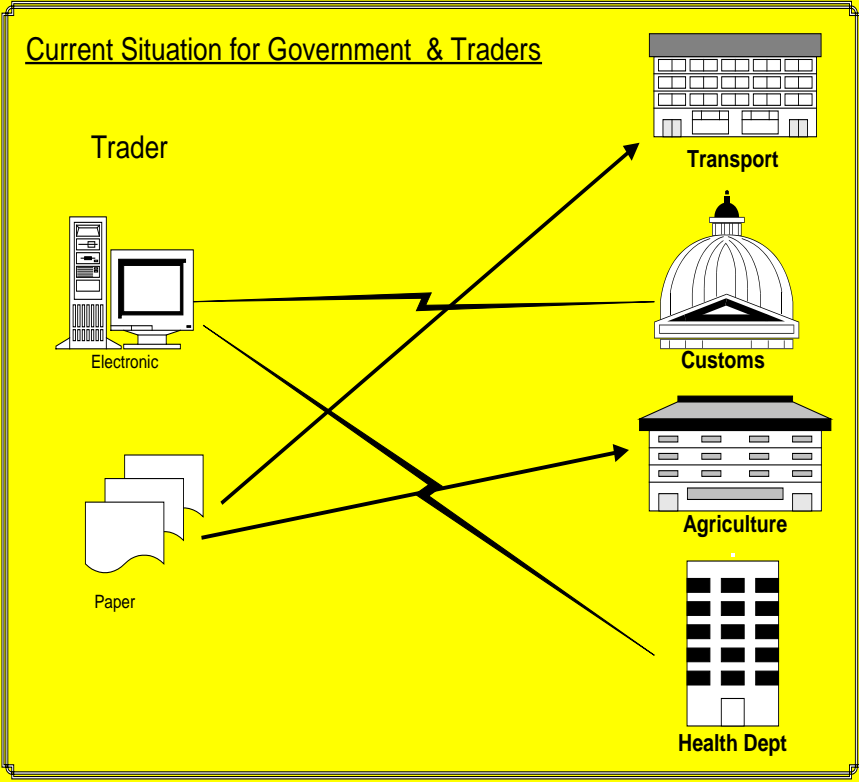


Bibliothèque des composants communs (CCL) du CEFACT-ONU

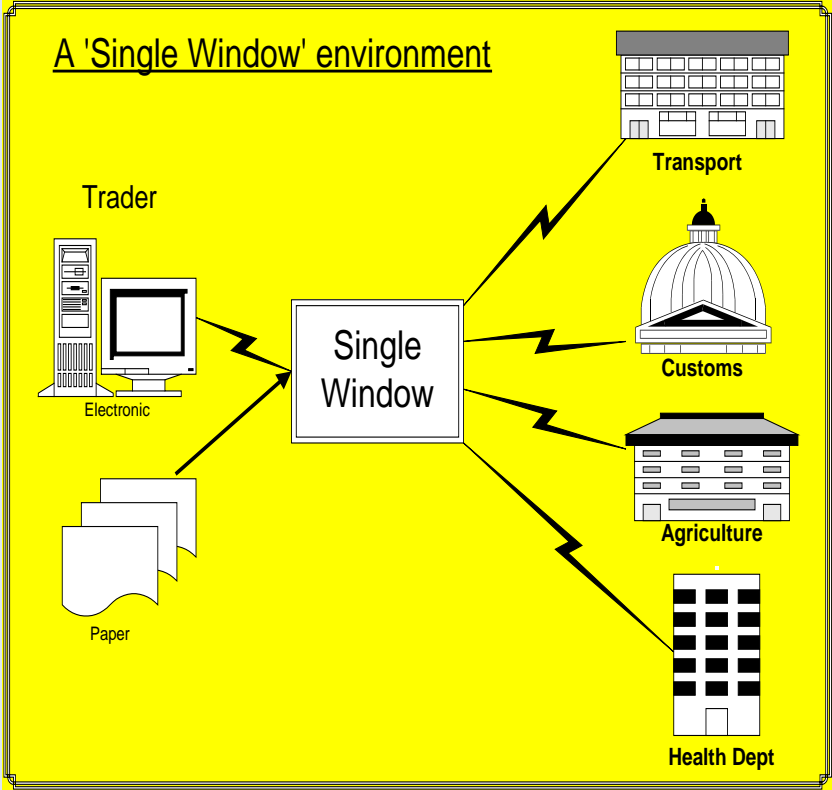
La bibliothèque est essentiellement une collection de composants transversaux, fondée sur des éléments de base qui peuvent être réutilisés dans de nombreux scénarios. Les composants transversaux sont la base de documents qui sont limités par le contexte à un domaine spécifique. Par conséquent, la définition du contexte est essentielle, car c'est la base de l'utilisation restreinte de chaque élément. Par exemple, il existe un élément de base appelé 'Partie' dans la bibliothèque, qui possède de nombreux attributs et qui peut être réutilisé pour définir plusieurs parties dans une transaction commerciale.

Concept du Guichet Unique

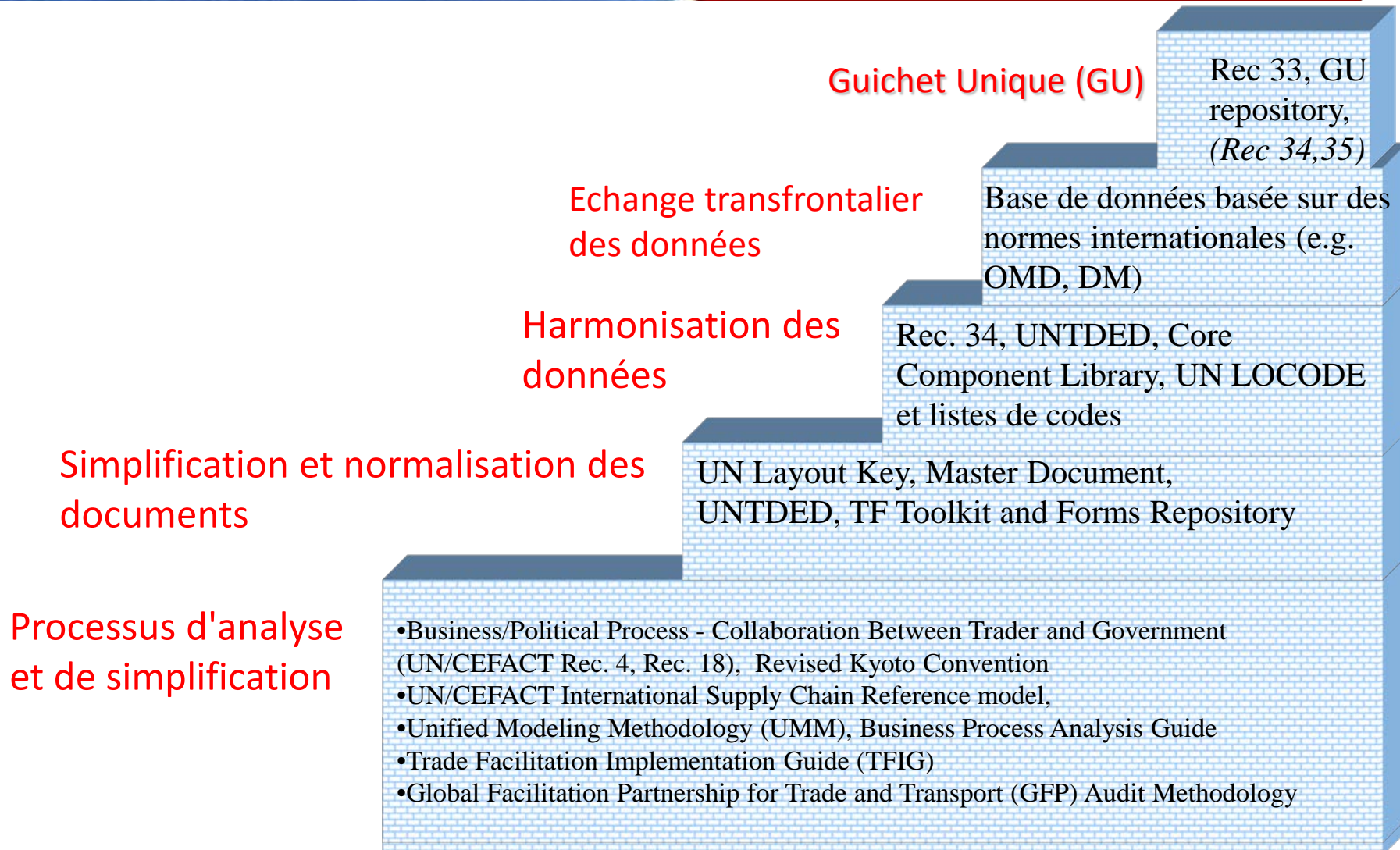
DE



À

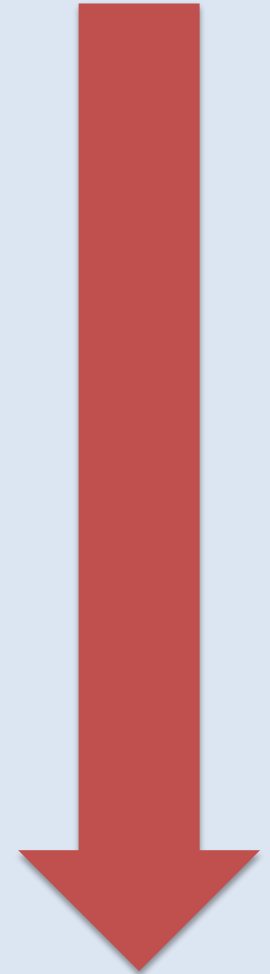
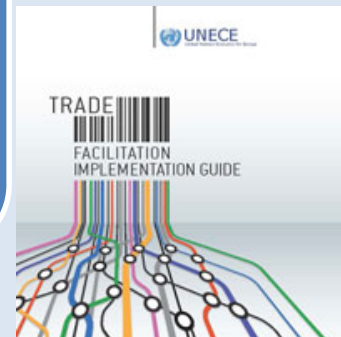
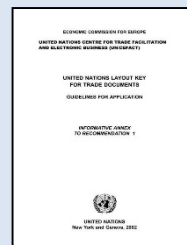
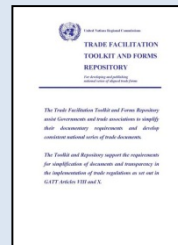
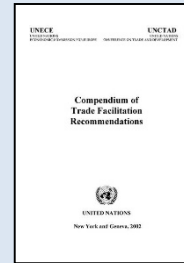
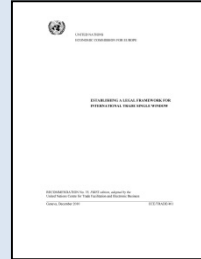
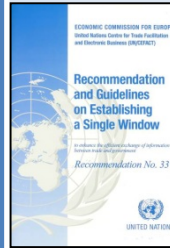


UNECE Recommendation 33



Le travail de la UNECE pour les Guichets Uniques

UNECE
Policy Rec.s
UN/CEFACT

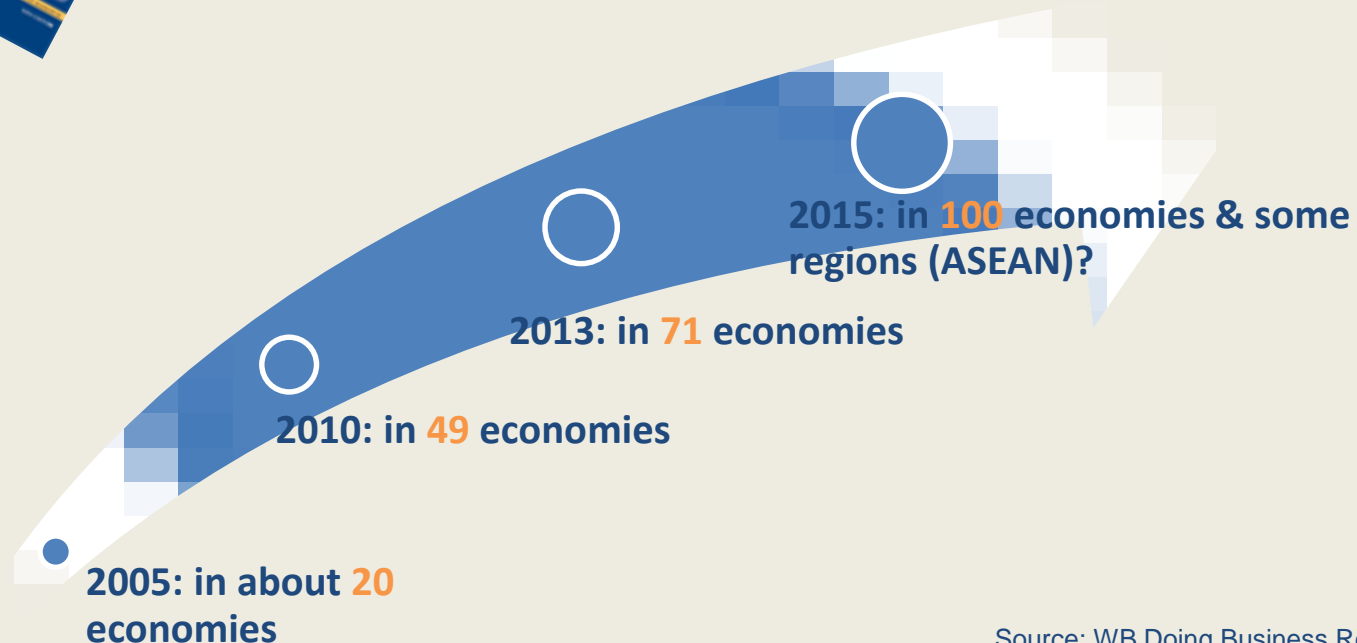


Exemple de réussite: Guichet Unique



“ Les Guichets uniques (GUs) sont d'important **conducteurs** pour la **simplification, harmonisation et automatisation** des procédures commerciales”

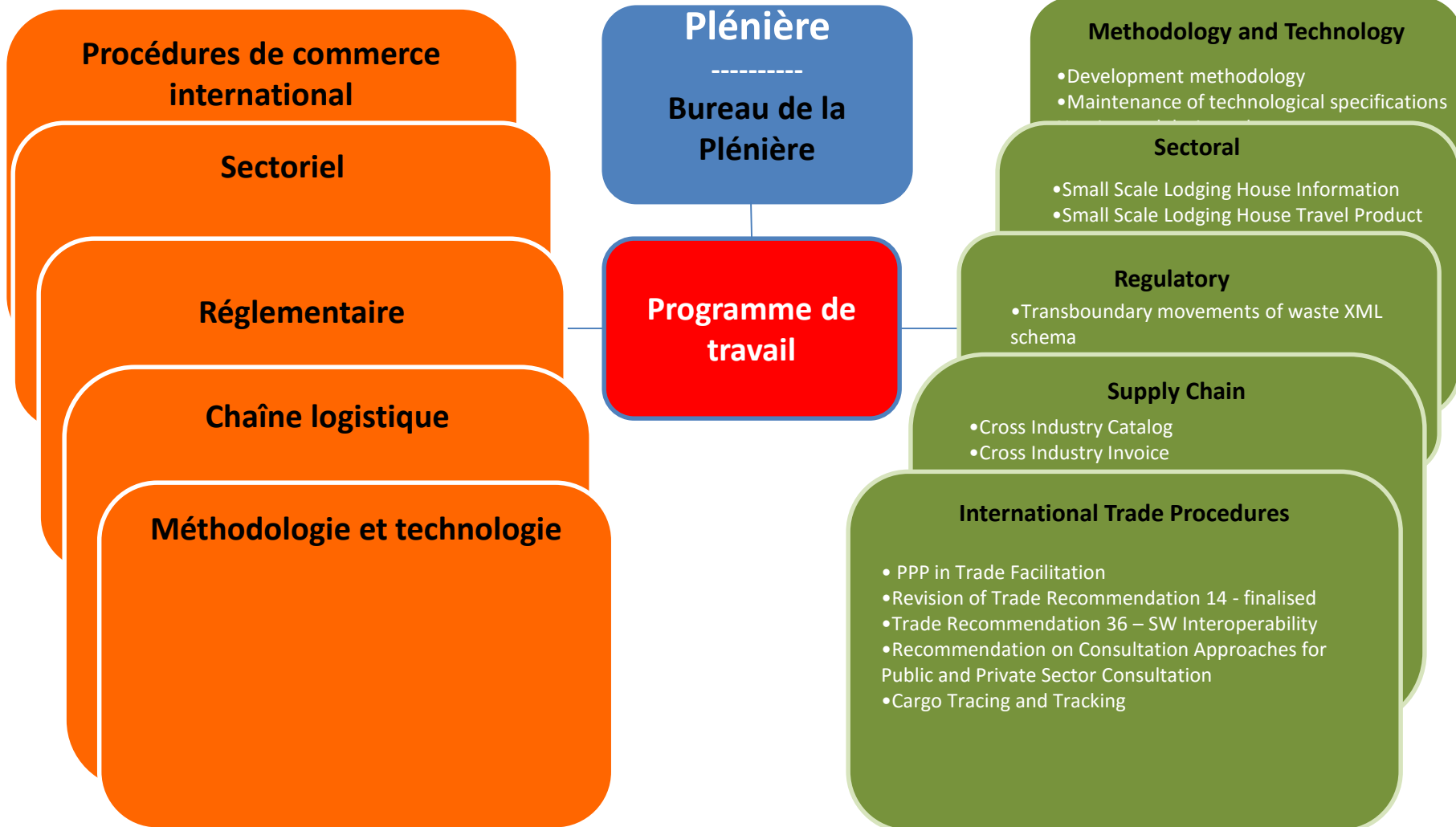
Bali Accord de Bali de l'OMC “ Article 10.4: Les Membres devront s'efforcer d'établir ou maintenir un guichet unique ..”



Source: WB Doing Business Report
2012/2013, UNECE-UN/CEFACT
2005/2011



Structure



Programme Development Areas

Project Teams

**UNECE -
UN/CEFACT**

**UNECE in
partnership with
other organizations**

**UNCTAD,WB,
UNIDO, etc**

Élaboration de
recommandations
élaboration de
normes et
d'entretien

Résultats / Support

Aider les pays à
mettre en œuvre nos
instruments et
élaborer une
stratégie de
facilitation du
commerce nationale

**Assistance
technique à long
terme**

(Les donateurs
décident ce qui doit
être fait) - la UNECE ne
fournit pas à long
terme TA



WTO

Le rôle de la CEE-ONU est de créer les normes grâce à la participation des États membres de l'ONU et de la communauté des affaires dans les groupes de travail / CEFACT. Nous nous engageons dans un programme de renforcement des capacités actif pour aider les pays à comprendre la meilleure façon de mettre en œuvre ces normes, compte tenu de leurs besoins uniques, des priorités et des ressources alors que d'autres organisations aident à longue -terme l'assistance technique (CNUCED, Banque mondiale, etc.). L'OMC fixe les règles



Welcome to the
Trade Facilitation Implementation Guide



Domains

Itineraries

Instruments

Organizations





United Nations Economic Commission for Europe
United Nations Centre for Trade Facilitation and Electronic Business

UN/CEFACT





Toutes les recommandation, les codes, les normes et publications sont disponibles gratuitement sur notre site Web à:

- www.unece.org/
- www.unece.org/trade
- www.unece.org/cefact/
- Tfig.unece.org

Courriel: maria.ceccarelli@unece.org