



Review of the transport situation and emerging trends in the UNECE region



**Seventy-second session
Inland Transport Committee
Geneva, 23 February 2010**

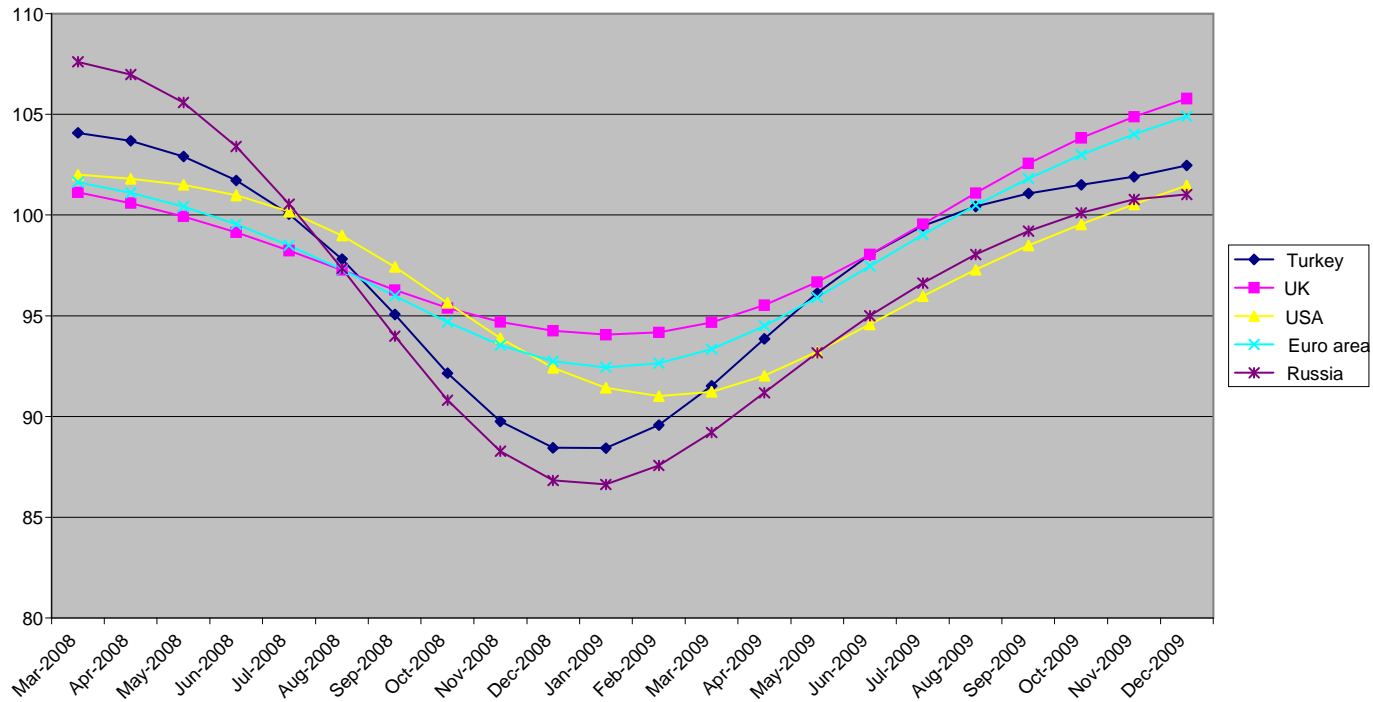
**Presentation by the secretariat
Transport Division, UNECE**

The context

- Strong impact of the financial crisis on economic activity
- Weak recovery under way or expected soon in most UNECE economies
- Slow revival of transport activity
- Major restructuring of auto industry

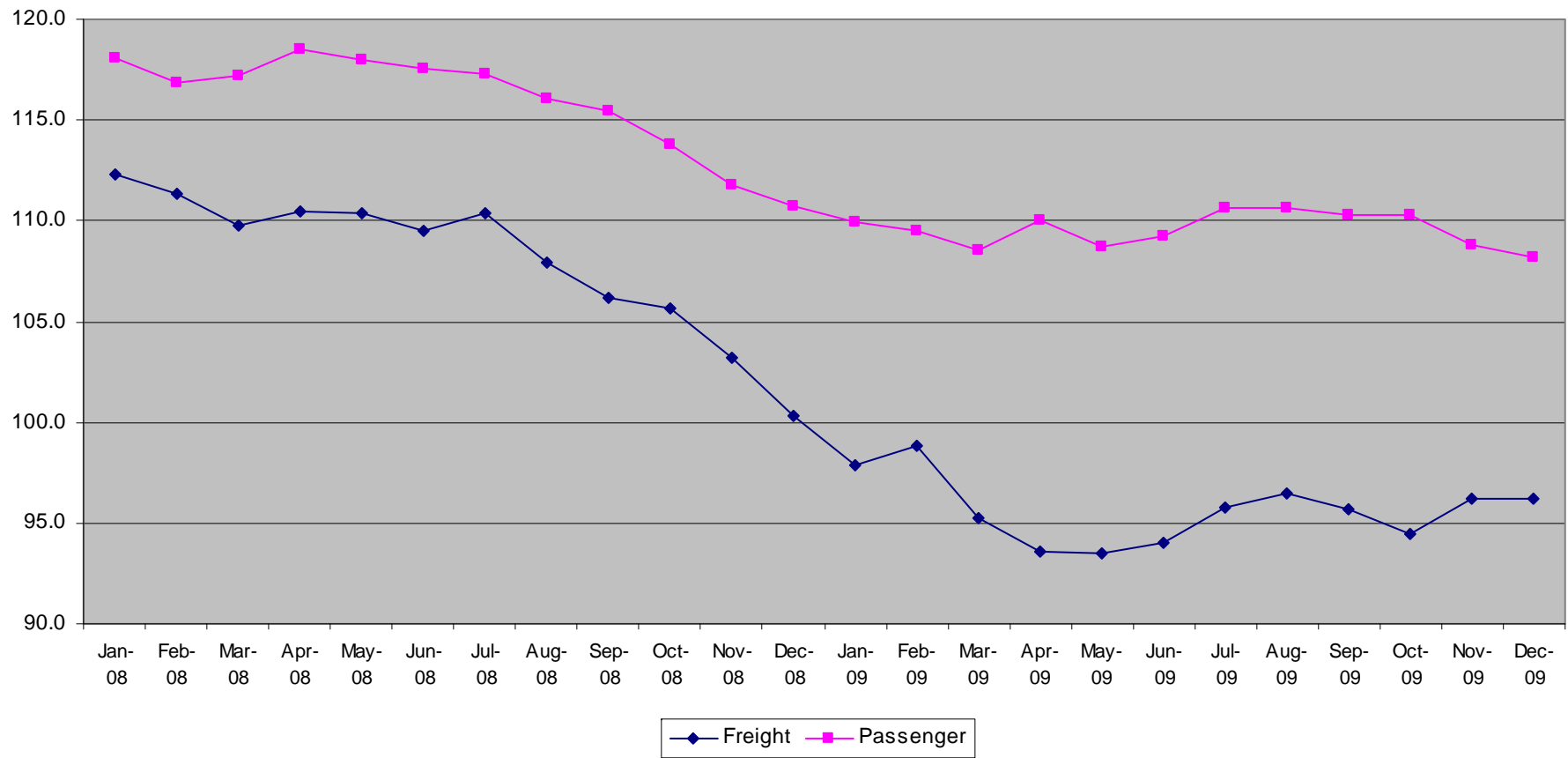
Leading indicators

OECD composite leading indicators
March 2008 - December 2009



Leading indicators, cont'd

Transportation Services Index, United States
January 2008 - December 2009 (seasonally adjusted)



UNECE questionnaire

- Questionnaire on transport situation in 2009
- Sent to UNECE governments in October
- Responses from 11 countries (AM, BE, CA, CH, DE, MK, NL, LT, PL, NO, TR)
- Posted at <http://www.unece.org/trans/main/wp5/wp5.html?expandable=99>

National transport trends

- Declining freight & passenger traffic volumes in H1/2009
- All transport modes affected
- Slow improvement in H2/2009
- Unforeseen benefits (decline in road traffic accidents, lower CO2 emissions)

Policy responses

- Expansionary monetary and fiscal policies in major UNECE economies
- Accelerated public investment in transport infrastructure projects in some countries
- Massive state aid for car manufacturers
- Little support for transport operators

Outlook for 2010

- Slow output recovery
- Unemployment to peak
- Transport activity to remain subdued
- Infrastructure investment uneven