

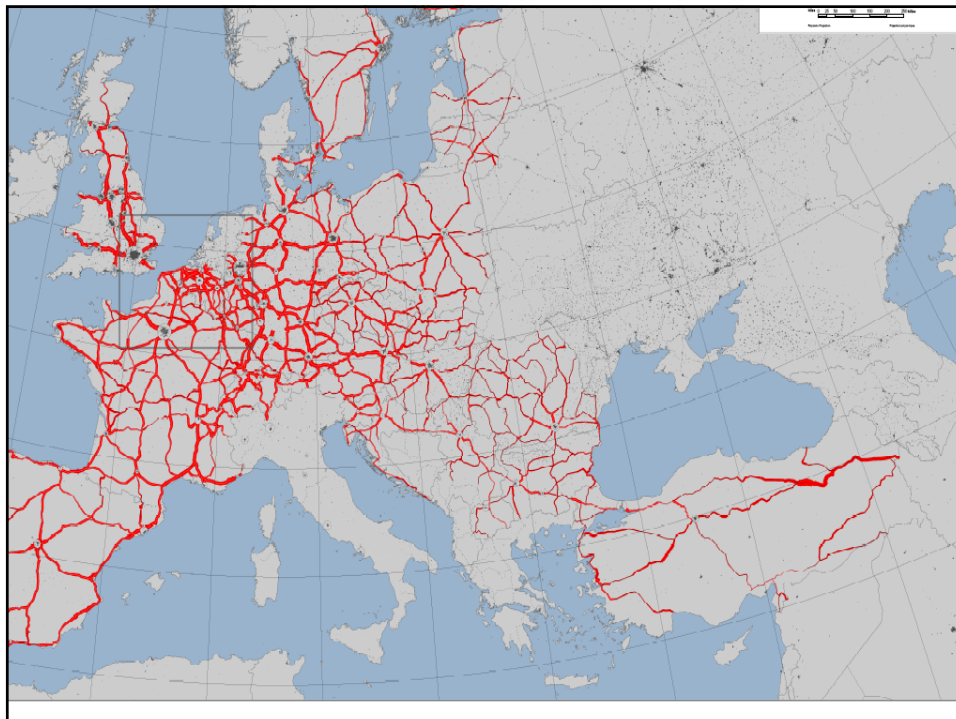


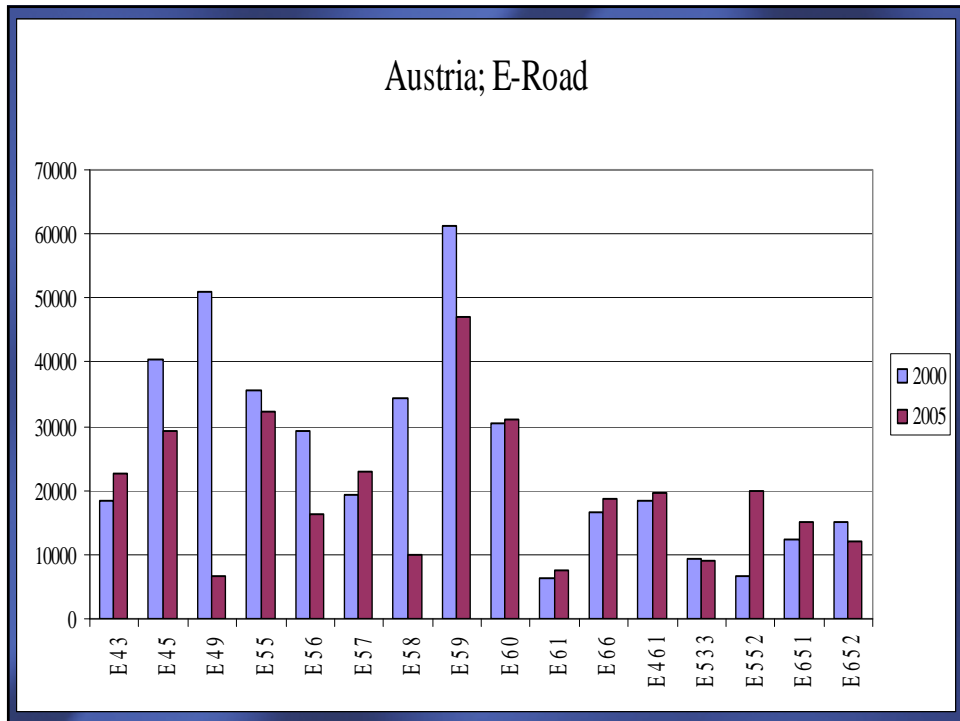
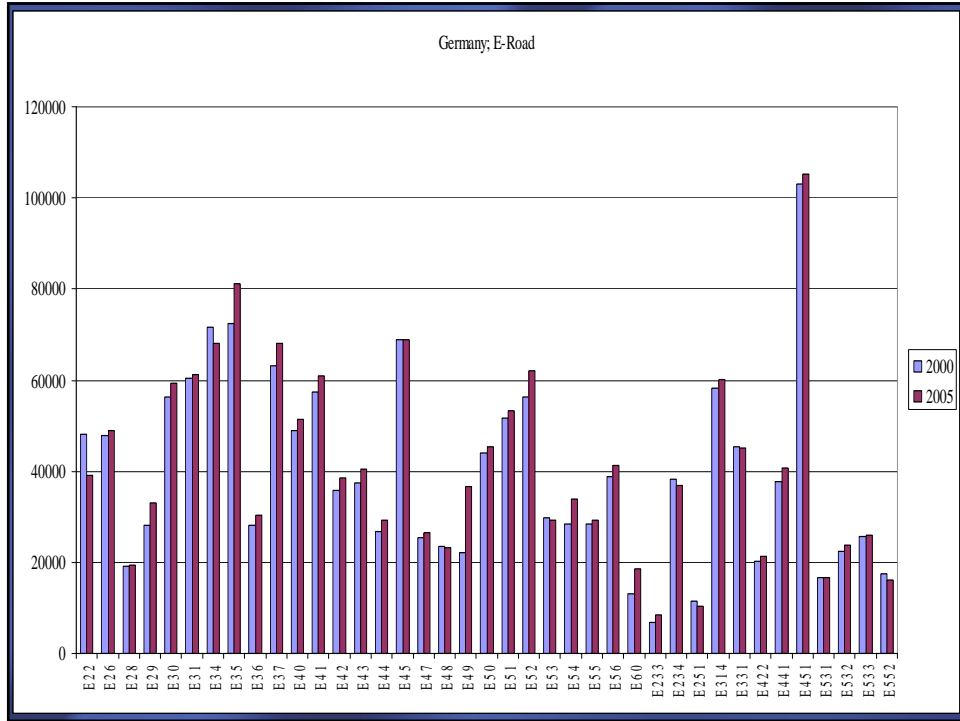
# E-Road & E-Rail Censuses

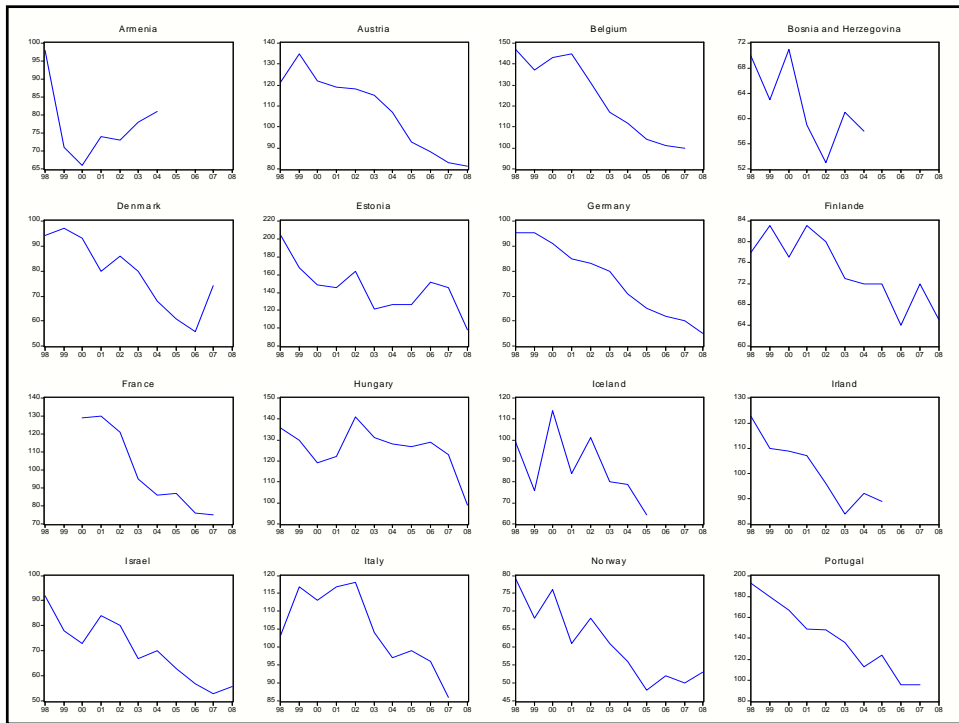
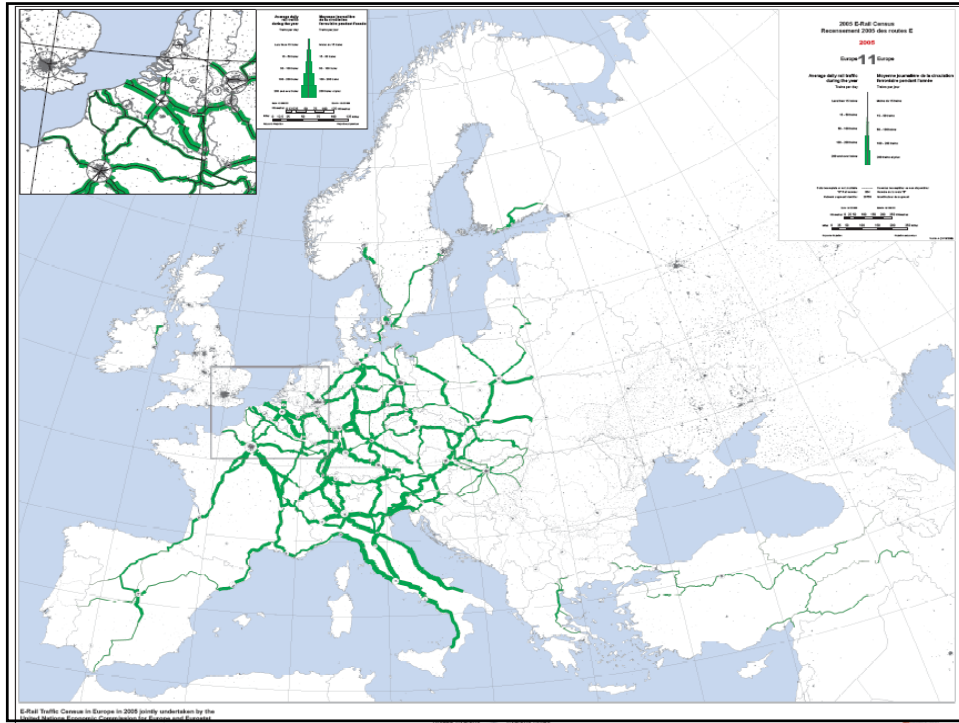
Inland Transport Committee, 72<sup>nd</sup> session,  
23-25 February 2010

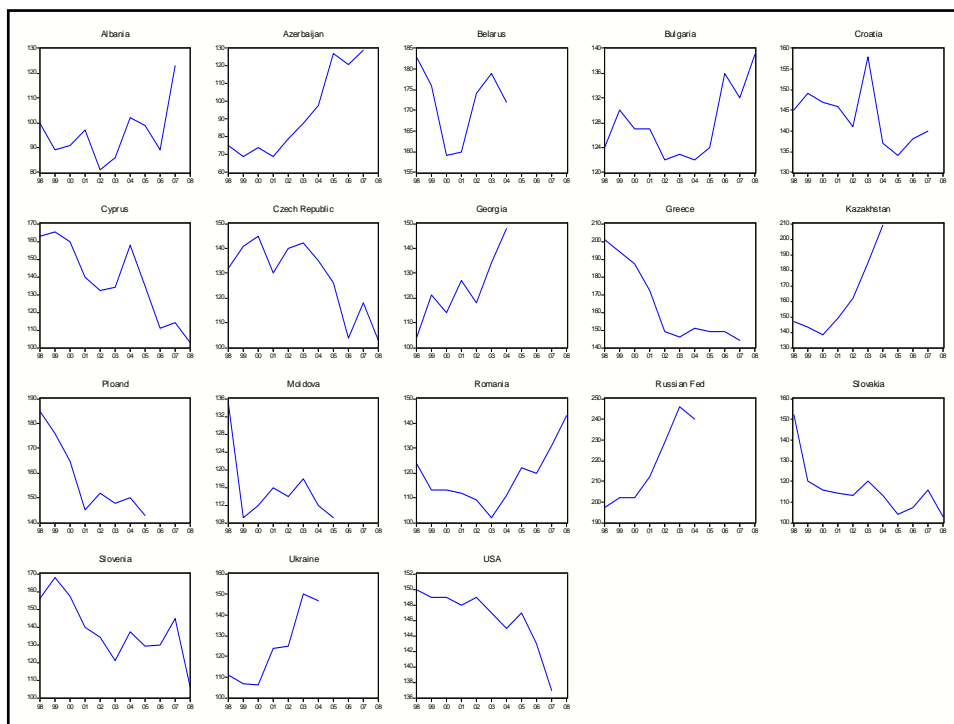
Ould Khou SID'AHMED

Economic Affairs Officer  
Transport Division, UNECE, Geneva









**THANK YOU!**

**UNECE Transport Division  
Sustainable Transport Section  
Working Party on Transport  
Statistics (WP.6)**

<http://www.unece.org/trans/main/wp6/wp6.html>

**Ould Khou SID'AHMED  
stat.trans@unece.org**