

## **TRANSPORT SITUATION IN BELGIUM IN 2009**

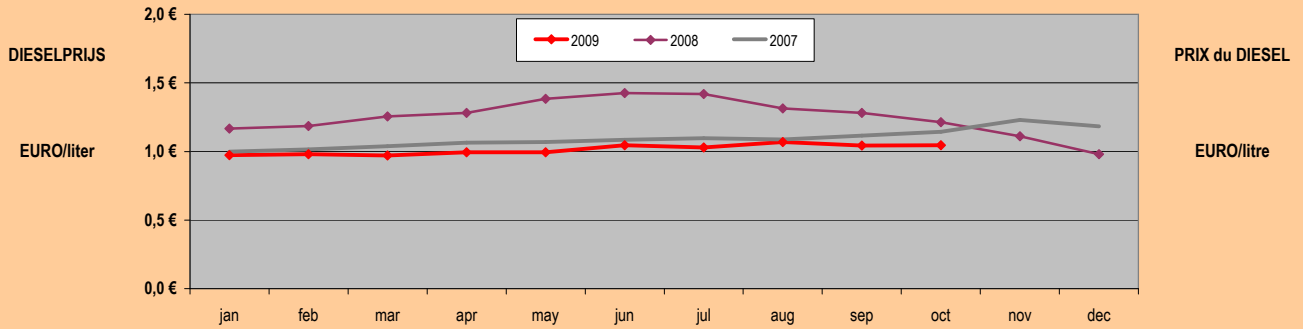
BRANDSTOF en WEGVERKEER

CARBURANT et TRAFIC ROUTIER

COMMENTAAR:

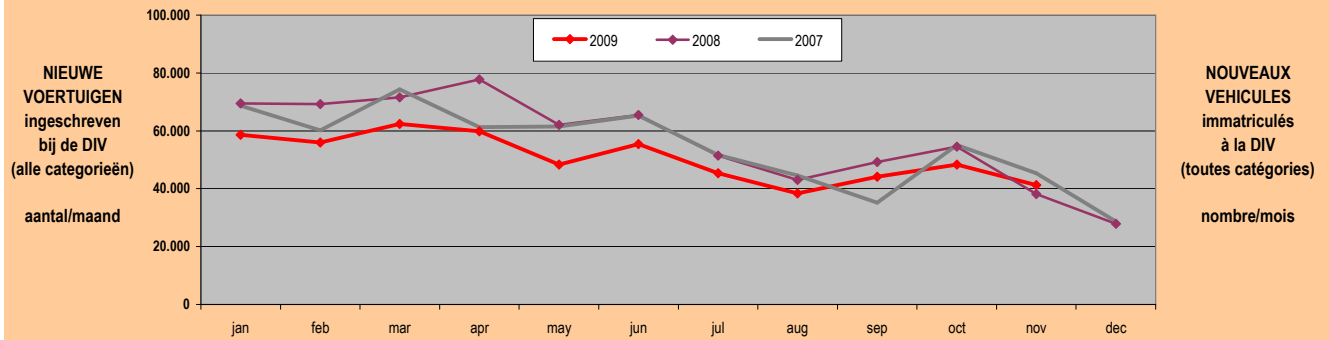
FUEL AND ROAD TRAFFIC - The price of fuel remained markedly under the 2008 level, encouraging road haulage over alternatives, Overall the number of new vehicles registered (all categories confounded) remains below the 2008 level, except for november 2009, which seems an indication that the worst of the economic crisis is over, The sales of second hand vehicles (all categories confounded) follow a more erratic pattern, but were generally higher than in 2007 and 2008, equally pointing to low economic expectations during 2009, The evolution of road traffic in 2009 compared to 2008 reflects not only the crisis but also the price of the barrel, giving an most remarkable graph,

: COMMENTAIRES



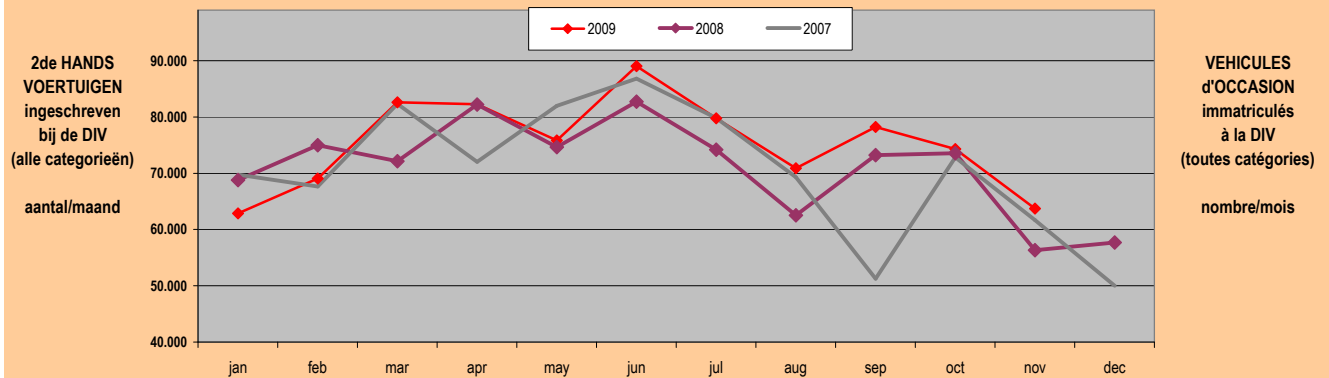
Bron: max. maandelijkse prijs BTW incl. vlgs Petroleumfederatie

Source: prix mensuel max. TVA incl. svt Fédération pétrolière



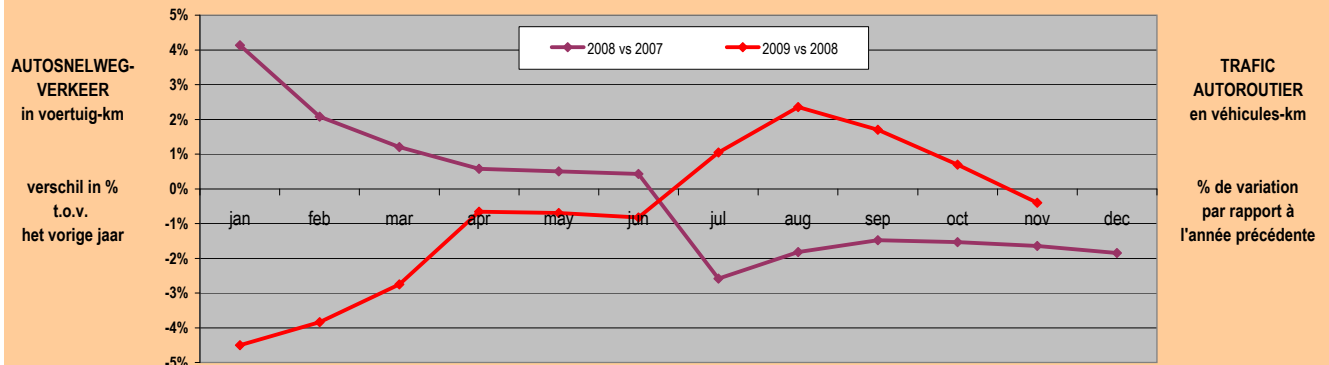
Bron: FODMV DIV

Source: SPFMt DIV



Bron: FODMV DIV

Source: SPFMt DIV



Bron: FODMV Dir. Mobiliteit Start-Sitter

Source: SPFMt Dir. Mobiliteit Start-Sitter

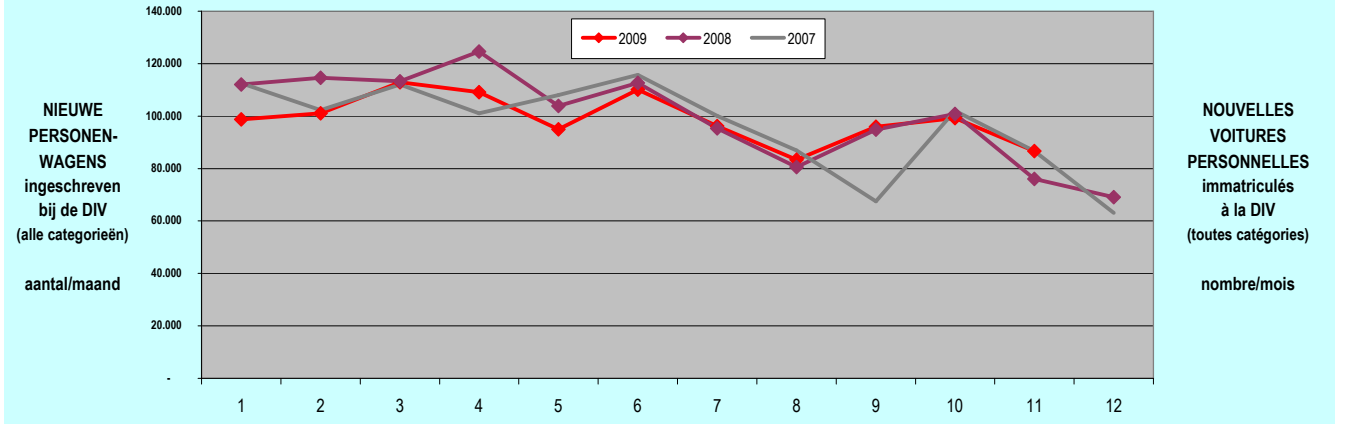
PERSONENVERVOER (nat. & internat.)

TRANSPORT DE PERSONNES (nat. & internat.)

COMMENTAAR:

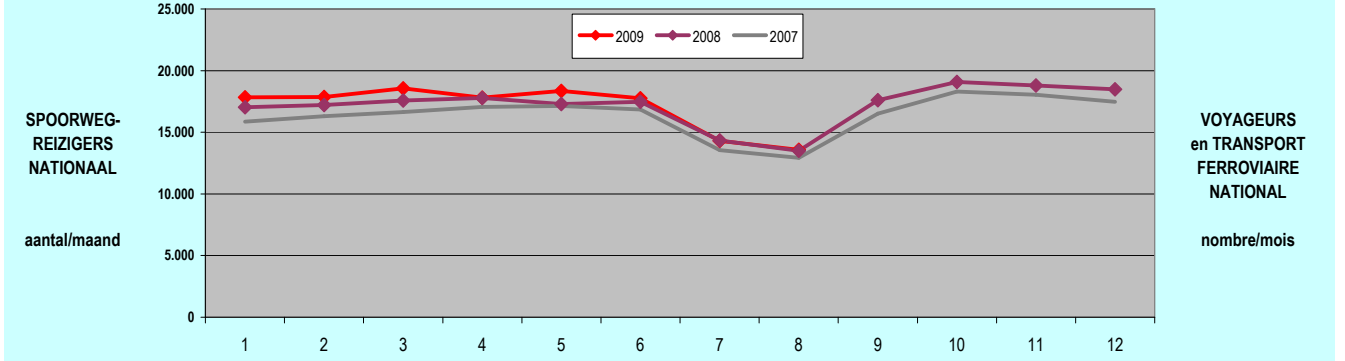
TRANSPORT AND MOBILITY OF PERSONS - The number of registered cars returned to its 2007 level, even though the average distance travelled shows a 6% drop (all roads confounded). The number of train passengers was stable, but somewhat lower than in 2008; possible due to the lower fuel prices and/or the growth of unemployment. There is a marked drop in international passenger traffic, still standing by the end of 2009 at minus 3 to 5% for rail transport and minus 10% for air passengers.

: COMMENTAIRES



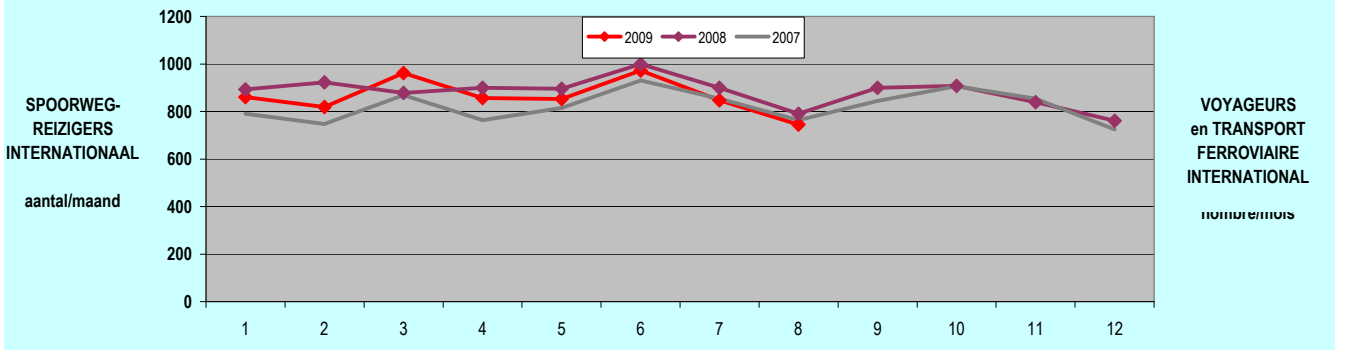
Bron: FODMV DIV

Source: SPFMT DIV



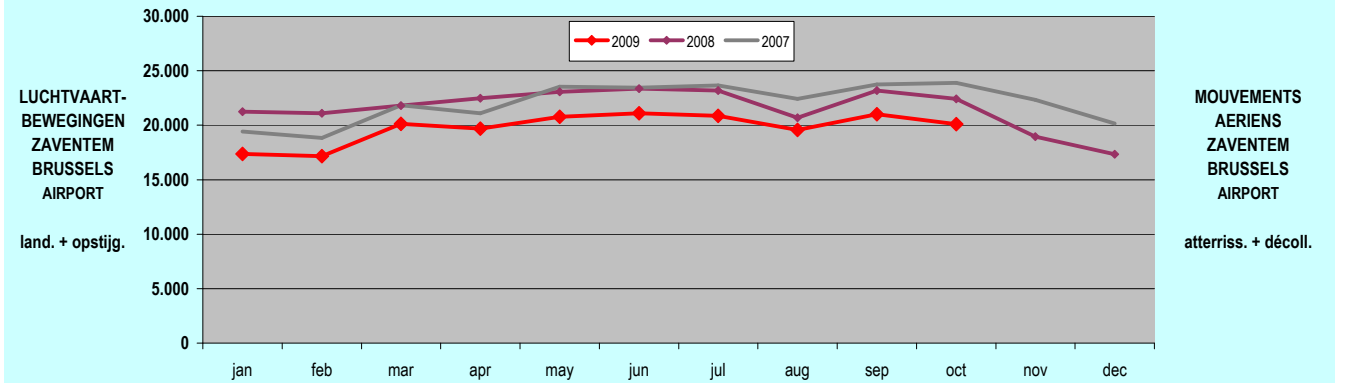
Bron: NMBS

Source: SNCB



Bron: NMBS

Source: SNCB



Bron: Belgocontrol

Source: Belgocontrol

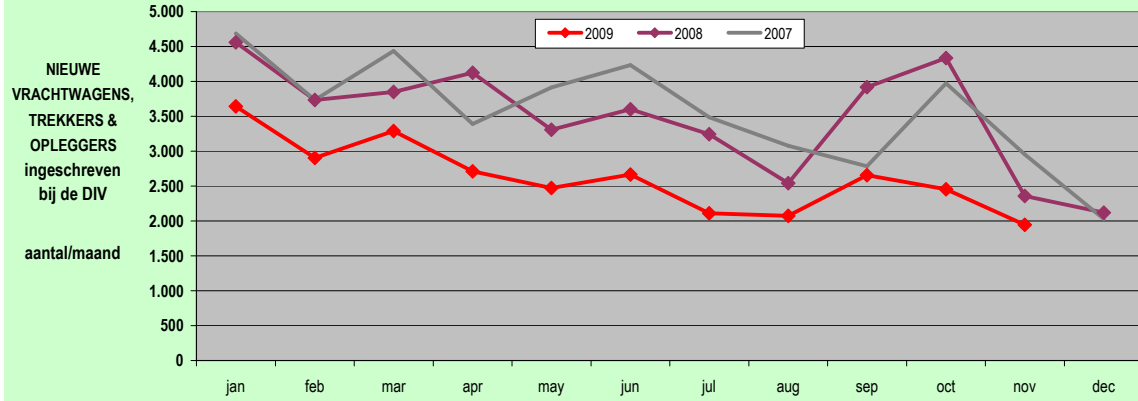
GOEDERENVERVOER (nat. & maritiem)

TRANSPORT DE MARCHANDISES (nat. & maritime)

COMMENTAAR:

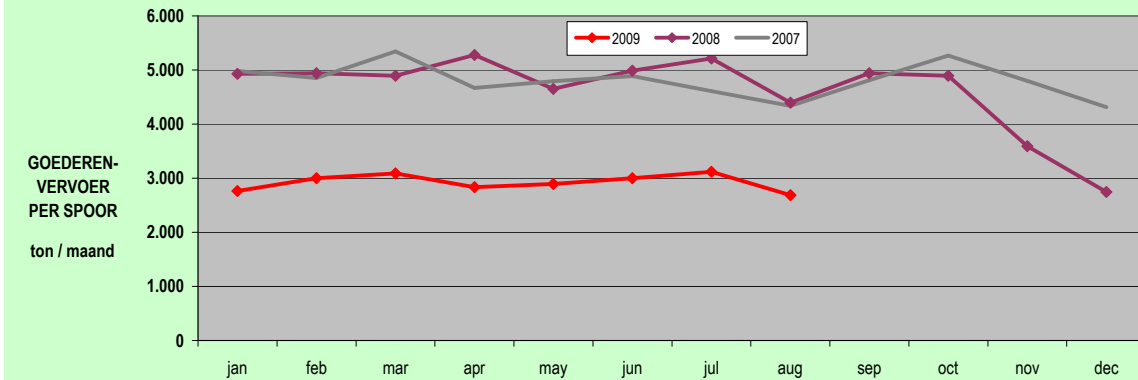
TRANSPORT OF GOODS - The number of utility vehicles (trucks, etc) registered in 2009 remained very low, that is at about 61% of the average for the first quarter 2008.,  
The same drop can be seen in the turnover of rail transport of goods (in tonnes) that remained around 60% of the 2008 figure,  
The same goes for inland navigation, even though few reliable figures are available there.  
Activity in the Belgian sea ports is improving since the summer, after a major drop at the beginning of 2009 (-20%) ; however, in september 2009 maritime activity was still 11% below the level of the same month of 2008. Like other ports in the Hamburg-le Havre range, Antwerp suffers, The deep sea port of Zeebrugge is the only Belgian port that seems to maintain its position thanks to important

: COMMENTAIRES



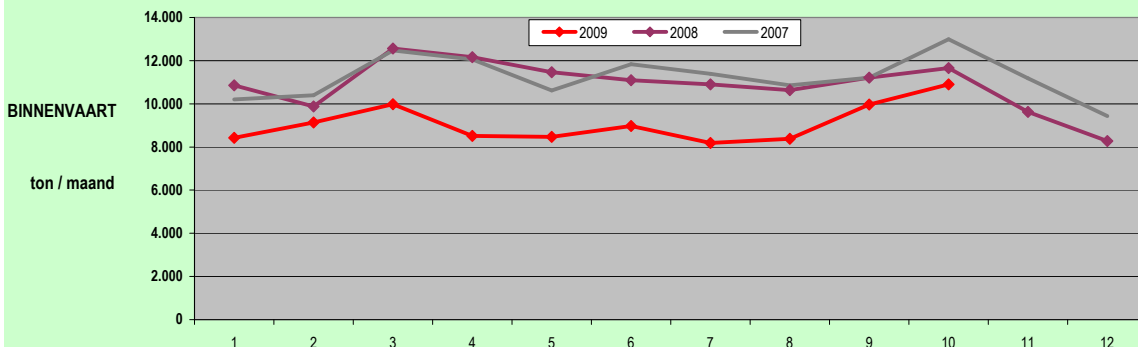
Bron: FODMV DIV

Source: SPFMT DIV



Bron: NMBS

Source: SNCB

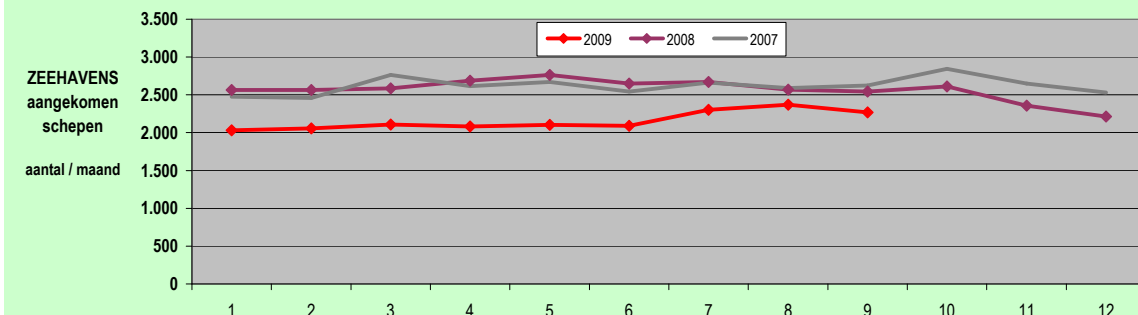


Bron: FOD Economie DGEIS (NIS)

raming 2009 naar Dienst Scheepvaart en Zeekanaal

estimation 2009 sur base Scheepvaart et Zeekanaal

Source: SPF Economie DGIES (INS)



Bron: FOD Economie DGEIS (NIS)

raming april-sept. 09 naar kwartaalcijfers Antwerpen

estimation sur base Anvers pour avril-sept. 09

Source: SPF Economie DGIES (INS)

NOUVEAUX CAMIONS, TRACTEURS ROUTIERS & SEMI-REMORQUES immatriculés à la DIV  
nombre/mois

TRANSPORT FERROVIAIRE de MARCHANDISES  
tonnes / mois

NAVIGATION INTERIEURE  
tonnes / mois

PORTS MARITIMES navires entrés  
nombre / mois