

Regional road safety approach in Puducherry, India

Status report and first results

Erik Donkers



SOFTWARE



IMPLEMENTATION



INITIATIVES



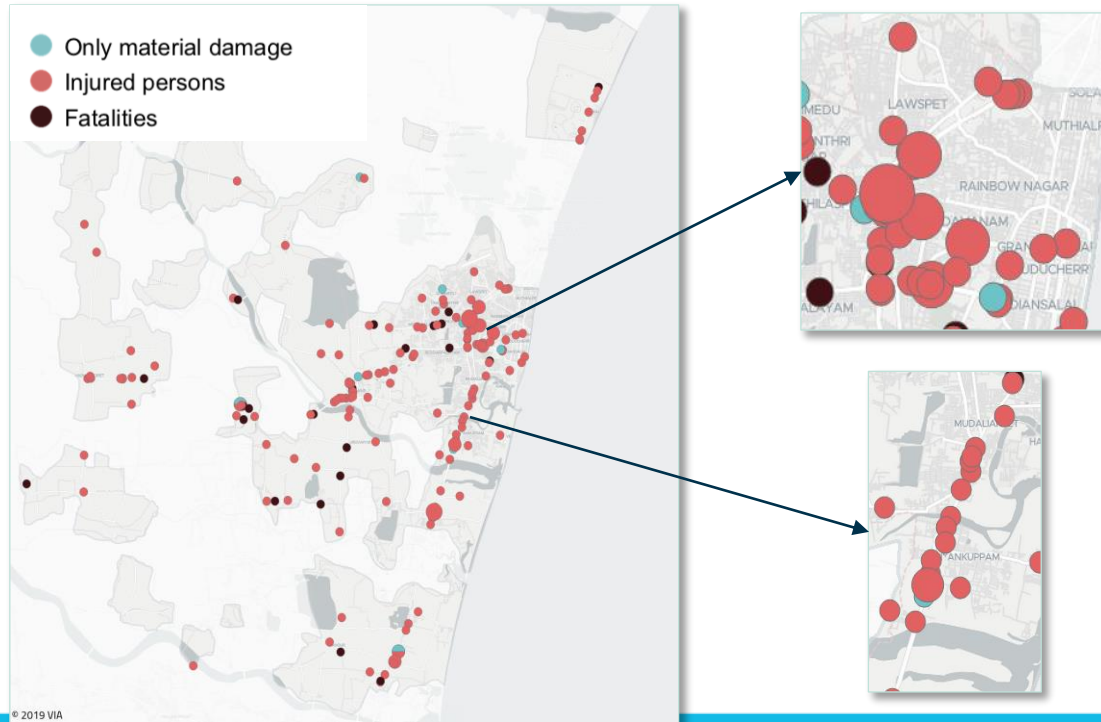
September 17, 2019 ▪ UNECE ▪ Geneva

VIA Software

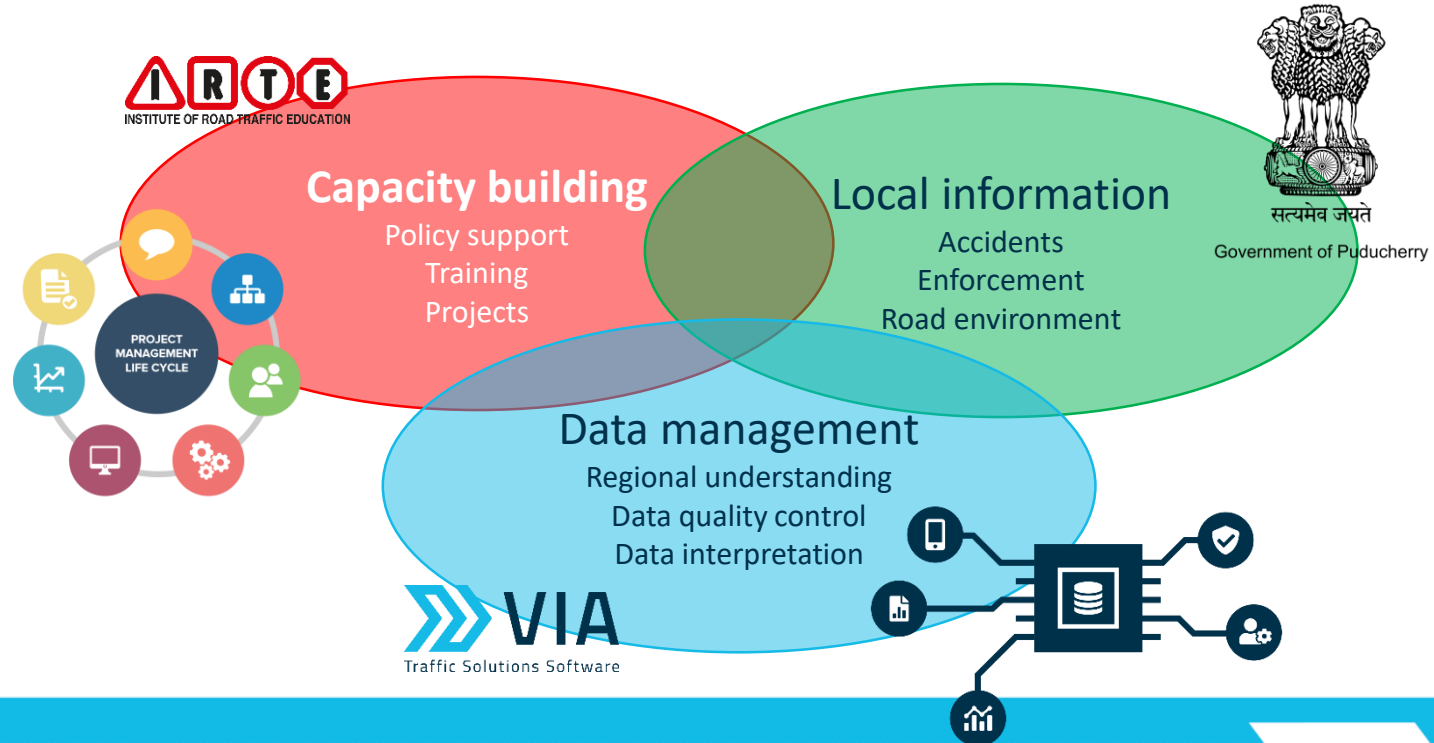
- Consultancy in road safety for more than 35 years in the Netherlands
- Last 10 years focused on sharing their knowledge by developing software
- Mission: to create the **Digital Partner** in road safety
 - Standardised software, easy to use and to implement
 - Road safety policy based on current data and risk management
 - One software package for all tasks
 - Registration, analysis & reporting
 - Data management & quality controls
 - Implementation & capacity building



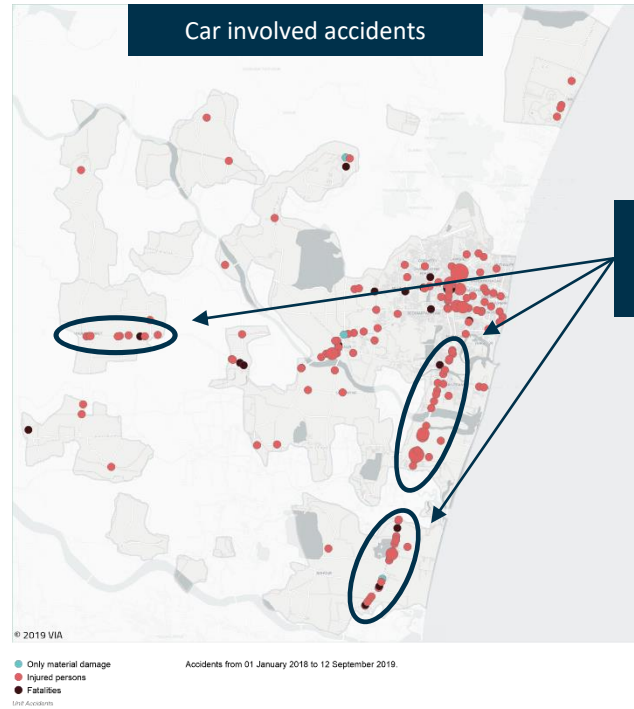
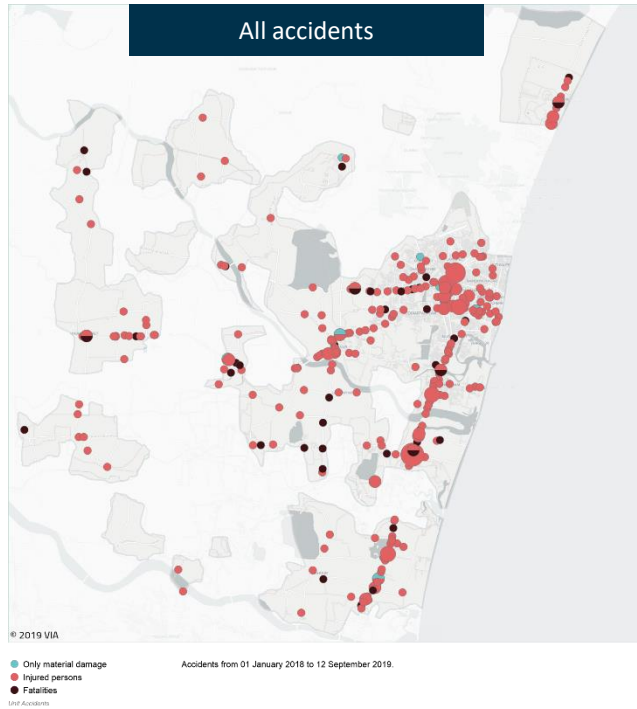
Accident map based on 6 months



Regional road safety approach in Puducherry

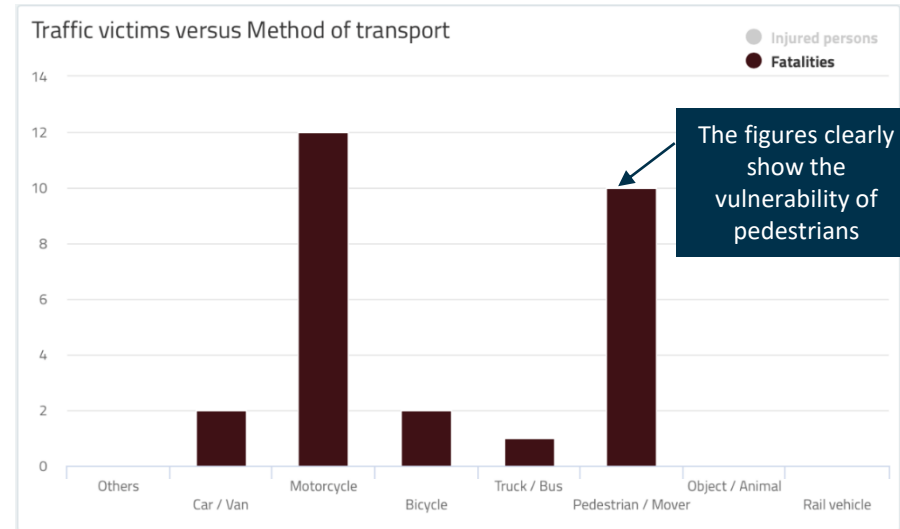
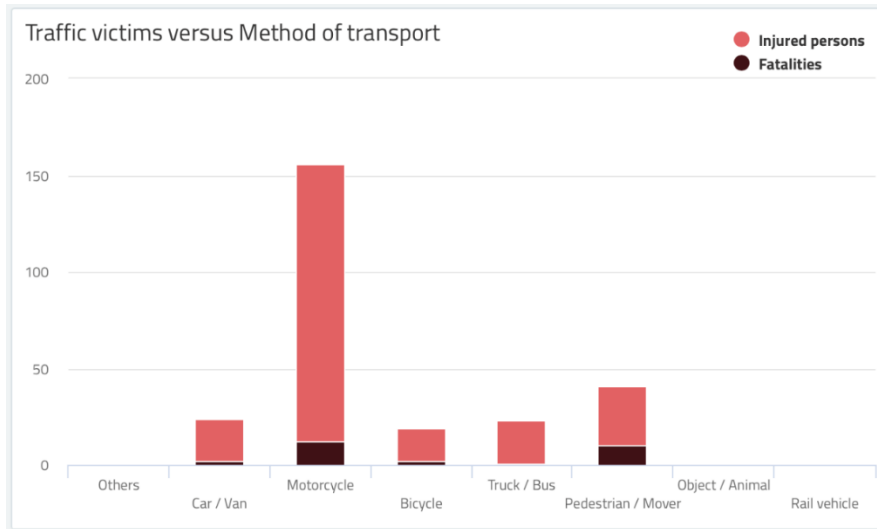


Red routes

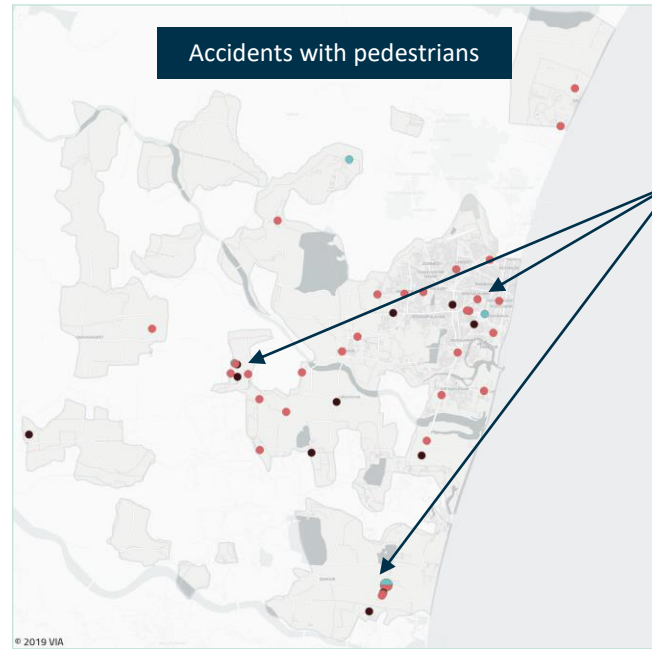
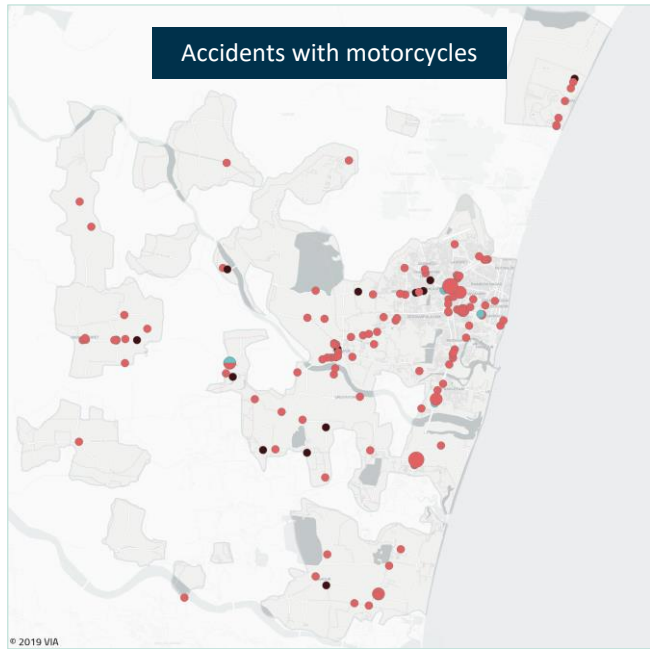


Search for 'red routes' based on accidents with cars, vans and trucks

Victims & Fatalities per method of transport



Selection of method of transport

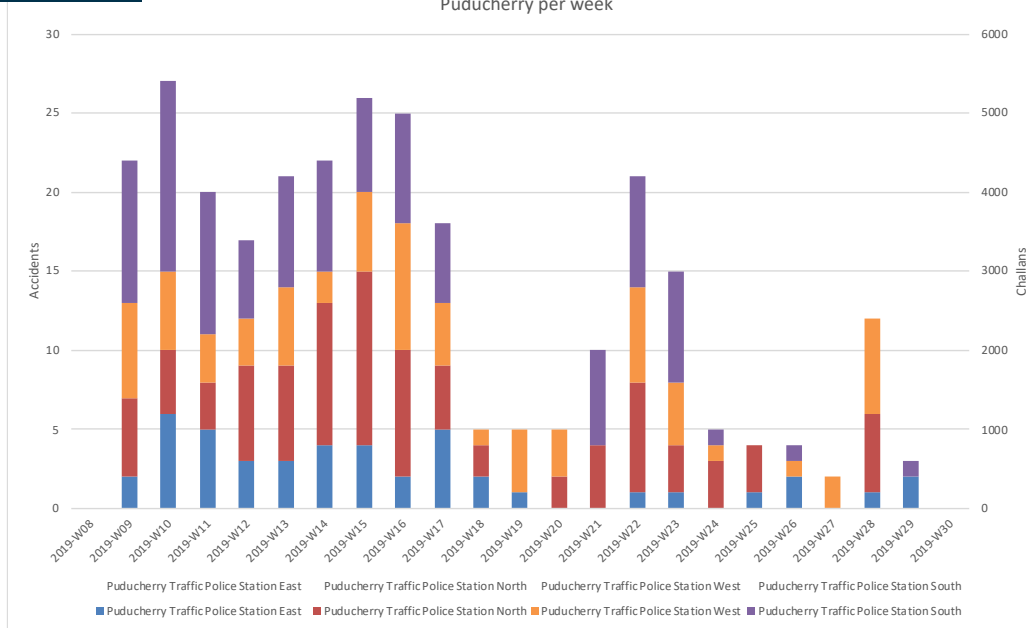


Pedestrians are most involved in accidents in the built up area

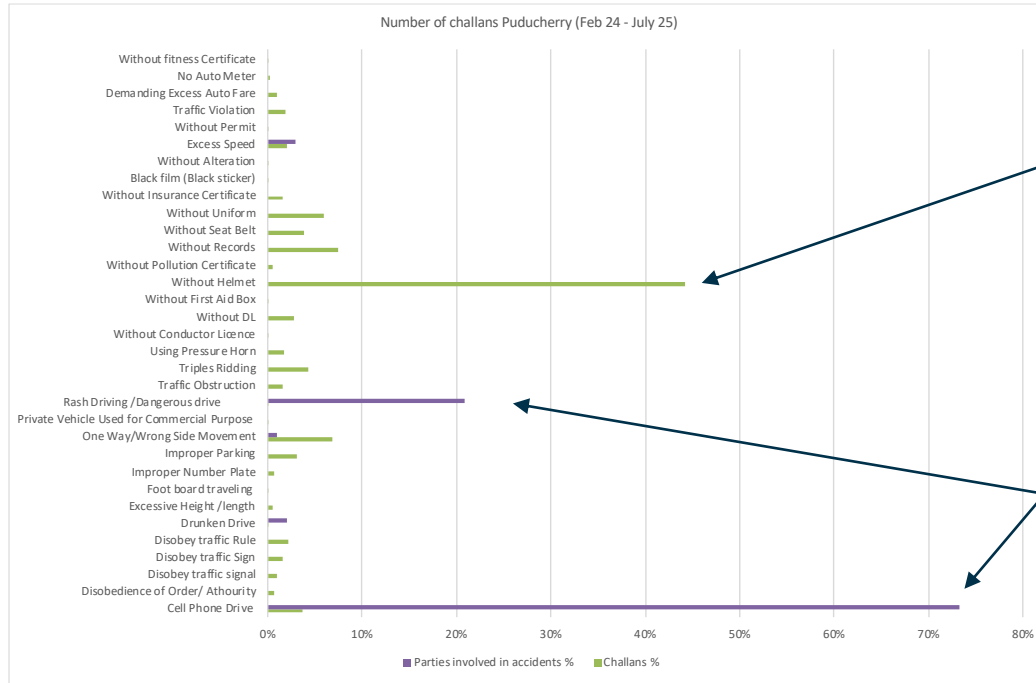
Monitoring accidents & fines

Optimize the enforcement

Number of accident versus number challans per police station
Puducherry per week



Fines versus accidents

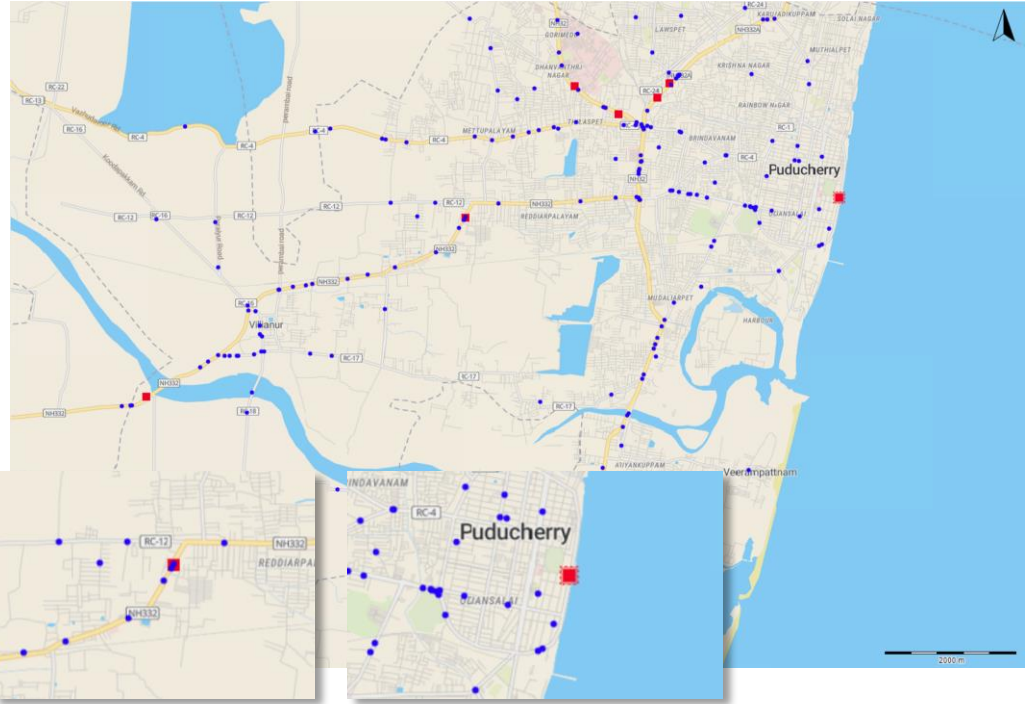


Most fines for not wearing a helmet (44%)

Most accidents caused by
 - using cell phone during driving (73%)
 - rash driving / dangerous drive (21%)

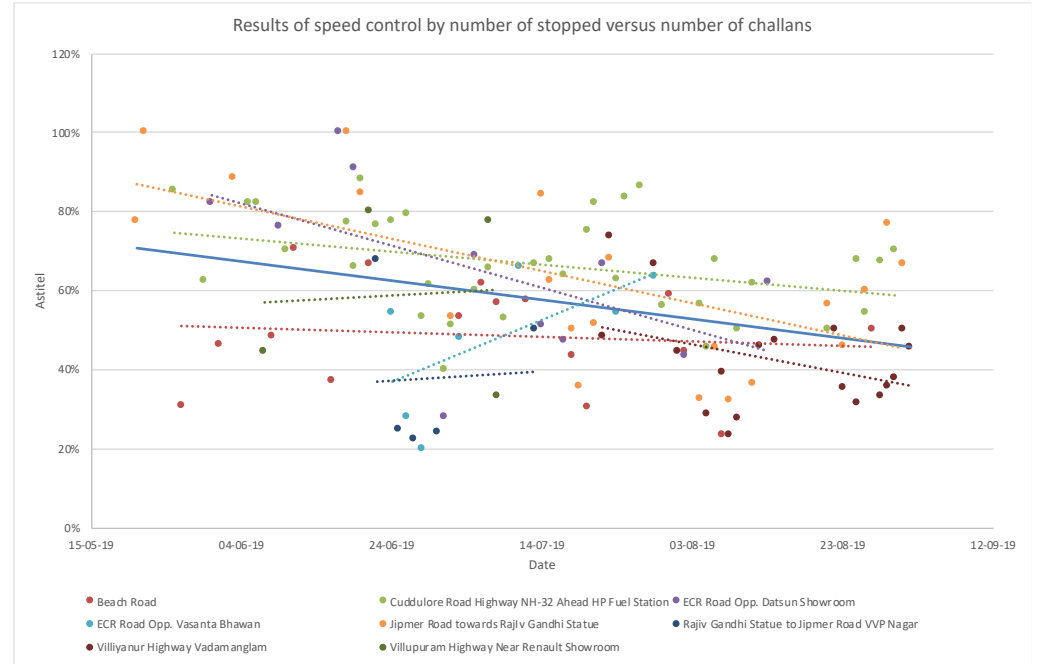
Speed control locations versus accidents

- 5 speed control locations
- Not all locations have a lot of accidents



Effectiveness of speed controls

- The number of fines per stopped car went down on most locations
- But only when is it done for a longer period of time



Always a step ahead. via.software

E.J.P. (Erik) Donkers

Director

M. +31 6 53 300 740

E. erik.donkers@via.nl

Rembrandterf 1 • 5261 XS Vught • The Netherlands • T. +31 (0) 73 657 91 15

E. info@via.nl • I. www.via.nl • TAX NL 8016.97.438.B01 • CoC 160 68 457

