



United Nations Economic Commission for Europe
Transport Division

Road Transport Statistics

Ould Khou SID'AHMED

SPECA Workshop on Road Transport and Road
Safety Statistics

Ashgabat, Turkmenistan

8-9 September 2016





TWO DIRECTIONS

- **Collection and dissemination of transport statistics, including data on motor traffic, road traffic accidents and rail traffic**
- **Common methodologies to facilitate and improve the collection of information on road, rail and IWW traffic flows and infrastructure parameters through surveys and censuses**





Main activities

- Glossary of transport statistics
- Development and maintenance of the on-line UNECE Transport Statistics Database
- Common questionnaire
- Questionnaire on Road Traffic Accidents
- Recommendations to Governments on motor traffic and rail traffic censuses





Road Transport

- Infrastructure
- Transport equipment
- Enterprise-Economic performance
- Traffic
- Transport measurement
- Accidents



Illustrated Glossary for Transport Statistics

4th EDITION





GLOSSARY

- I INFRASTRUCTURE**
- II TRANSPORT EQUIPMENT**
- III ENTERPRISES, ECONOMIC
PERFORMANCE AND EMPLOYMENT**
- IV TRAFFIC**
- V TRANSPORT MEASUREMENT**
- VI ENERGY CONSUMPTION**
- VII ACCIDENTS**





Passenger cars

- **By age**
- **By type of motor energy and engine size**
- **By unladen weight**





Mopeds

- Two, three or four-wheeled road motor vehicle, which is fitted with an engine having a cylinder capacity of less than 50cc
- Total is collected



O. Sid'Ahmed





Motorcycles

- Two-, three- or four-wheeled road motor vehicle not exceeding 400 kg (900 lb) of unladen weight. All such vehicles with a cylinder capacity of 50 cc or over are included, as are those under 50 cc which do not meet the definition of moped.
- Collected by size of engine:
 - $\leq 125\text{cc}$
 - $<125\text{ cc}$





Passenger cars

- For passengers (max 9 including the driver):

Also:

- Vans for passengers
- Taxis
- Hire cars
- Ambulances
- Motor homes





Passenger cars by age

- ≤ 2 years
- $2 \geq 5$ years
- $5 \geq 10$ years
- >10 years





Passenger cars by type of motor energy and engine size

- **Petrol** (≤ 1399 cc, 1400 cc - 1999 cc, ≥ 2000 cc)
- **Diesel** (≤ 1399 cc, 1400 cc - 1999 cc, ≥ 2000 cc)
- **Alternative**
 - Electricity
 - GPL/LPG
 - Natural gas
 - Others





Passenger cars by unladen weight

- up to 999 kg
- 1000 kg - 1249 kg
- 1250 kg - 1499 kg
- more then 1500 kg





Motor coaches, buses and trolley buses

- By age
- By type of motor energy





Lorries/Trucks

- By age
- By type of motor energy
- By load capacity
- By load capacity and type of motor energy
- By kind of transport





Lorries by load capacity

- up to 999 kg
- 999 kg - 1 499 kg
- 1 500 kg - 2 999 kg
- 3 000 kg - 4 999 kg
- 5 000 kg - 6 999 kg
- 7 000 kg - 9 999 kg
- 10 000 kg - 14 999 kg
- 15 000 kg and over





Lorries by load capacity and type of motor energy

- **up to 1499 kg**
 - Petrol
 - Diesel
 - Alternative
- **1500 kg and over**
 - Petrol
 - Diesel
 - Alternative





Road tractors

- Exclusively or primarily, to haul other road vehicles which are not power-driven

Data collected:

- By age
- By type of motor energy
- By kind of transport





Trailers/Semi trailers

- **By load capacity**
 - up to 4999 kg
 - 5 000 kg - 9 999 kg
 - 10 000 kg - 14 999 kg
 - 15 000 kg and over
- **By kind of transport**





Special purpose road vehicles

- Fire brigade vehicles
- Mobile cranes
- Self-propelled rollers
- Bulldozers with metallic wheels or track
- Vehicles for recording film, radio and TV broadcasting
- Mobile library vehicles
- Towing vehicles for vehicles in need of repair
- Other special purpose road motor vehicles





Data availability

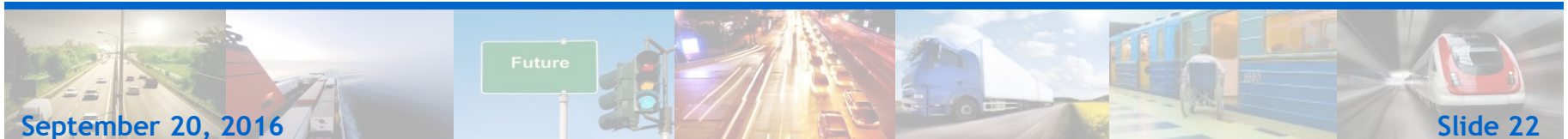
- **Very low for North America and EECCA countries**
- **Improvement through the use of the WebCoQ**





2010 E-ROAD CENSUS

- Ad Hoc Group of Experts (10 Nov 2008)
- Draft Resolution + Recommendationst adopted by ITC (24-26 Feb 2009)
- Deadline for acceptation of the Resolution:
30 September 2009
- Census in 2010
- Data to be provided before 1 November 2011







New directions

Pilot questionnaires:

- Road traffic performance (vehicle kilometres)
- Buses and coaches by fuel type
- Transport of dangerous goods





Dissemination of Transport Statistics

- Publications
- Annual Bulletin of Transport Statistics (ABTS)
- Statistics of Road Traffic Accidents in Europe and North America
- Maps and data on E Road/E Rail Traffic Censuses
- Online database



