



77<sup>th</sup> Session

INLAND TRANSPORT COMMITTEE

# Working Party on Intermodal Transport and Logistics (WP.24)

Intermodal transport and logistics  
Item 5 (f)





# AGTC Agreement

## European Agreement on Important International Combined Transport Lines and Related Installations (AGTC Agreement)

- Network infrastructure standards
- Performance parameters and benchmarks for trains and terminals
- Currently 32 contracting parties

United Nations Economic Commission for Europe

European Agreement on Important International Combined Transport Lines and Related Installations (AGTC)

1 February 1991



Photo Source: UIC



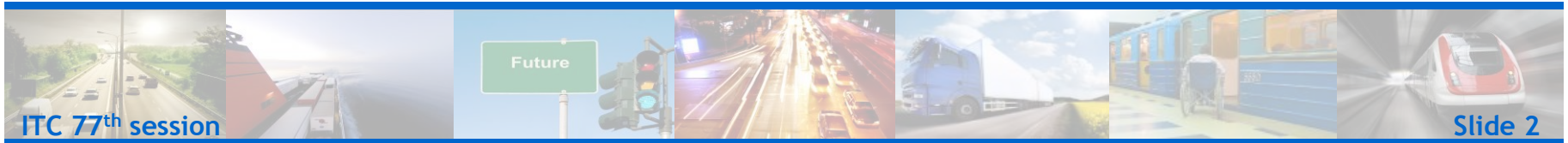
INFRASTRUCTURE PARAMETERS FOR THE NETWORK OF IMPORTANT INTERNATIONAL COMBINED TRANSPORT LINES

	A		B
	Existing lines which meet the infrastructure requirements and lines to be improved or reconstructed		New lines
	at present	target values	
1. Number of tracks	(not specified)	(not specified)	2
2. Vehicle loading gauge		UIC B <sup>2/</sup>	UIC C <sup>2/</sup>
3. Minimum distance between track centres <sup>1/</sup>		4.0 m	4.2 m
4. Nominal minimum speed	100 km/h <sup>3/</sup>	120 km/h <sup>3/</sup>	120 km/h <sup>3/</sup>
5. Authorized mass per axle:			
Wagons ≤ 100 km/h	20 t	22,5 t	22,5 t
≤ 120 km/h	20 t	20 t	20 t
6. Maximum gradient <sup>1/</sup>	(not specified)	(not specified)	12.5 mm/m
7. Minimum useful siding length	600 m	750 m	750 m

<sup>1/</sup> Not of immediate relevance for combined transport, but recommended for efficient international combined transport.

<sup>2/</sup> UIC: International Union of Railways.

<sup>3/</sup> Minimum standards for combined transport trains (see annex IV).





# Protocol to AGTC Agreement

## Protocol on Combined Transport on Inland Waterways to the AGTC Agreement

### 9 Contracting Parties:

Bulgaria, Czech Republic, Denmark, Hungary, Luxembourg, Netherlands, Romania, Serbia, Switzerland

United Nations Economic Commission for Europe

Protocol on  
Combined Transport on Inland Waterways  
to the European Agreement on  
Important International Combined Transport Lines  
and Related Installations (AGTC) of 1991  
17 January 1997



Photo Source: Short Sea Shipping Inland Waterway Promotion Center (Germany)



UNITED NATIONS



# CTU Code

## IMO/ILO/UNECE Code of Practice for Packing of Containers (CTU Code)

- Non mandatory – but could be used as basis for contracts or national laws
- Adopted by UNECE, IMO and ILO in 2014
- Website hosted by UNECE
- Available in multiple languages



[www.unece.org/trans/wp24/guidelinespackingctus/intro.html](http://www.unece.org/trans/wp24/guidelinespackingctus/intro.html)





# Brussels Workshop

## Role of freight forwarders and logistics in intermodal transport chains - 2014 theme

- Workshop hosted by the Government of Belgium (Brussels, 12 and 13 June 2014)
- Participation from member States and industry
- Four segments
  - (a) Terms and Statutes
  - (b) Actors of multimodality
  - (c) Actors in the supply chain
  - (d) Relevance of an international statute
- Secretariat to prepare questionnaire to address the status of freight forwarders in different countries for approval at next WP.24 session





# Other topics for discussion in 2015

- **Climate change and intermodal transport**
  - 2015 theme - *Intermodality leads to Sustainability*
- **Intermodal transport terminals**
  - Update AGTC based on new study?
    - a) *Types of terminals (categorization and mapping)*
    - b) *Opening and operating hours of terminals*
- **Preparing National Master Plans on freight transport and logistics**
  - Further analysis on guidelines needed?
    - a) *Framework of guidelines based on national experiences + expert advice*
    - b) *Tool-box of policy measures and mechanisms*



