

DEVELOPMENT OF GREATER GENEVA REGION

FUTURE RAILWAY EXPRESS NETWORK

UNECE INLAND TRANSPORTATION COMMITTEE – 24 02 2014

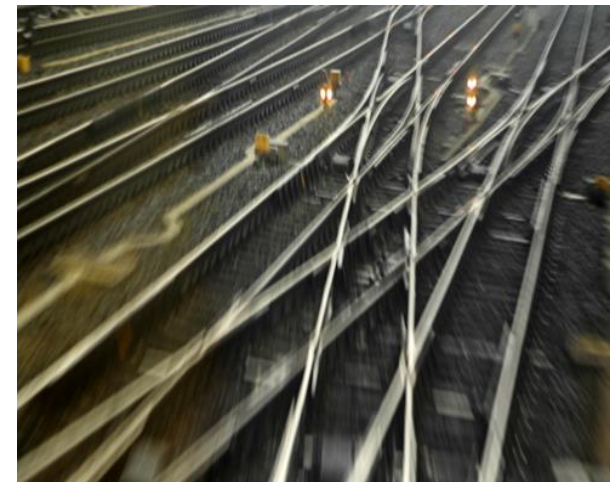
PRESENTATION – TWO CHAPTERS

- **GREATER GENEVA AREA 2014 - 2030**
IMPORTANT ISSUES OF DEVELOPMENT
- **MOBILITY 2030**
MULTIMODAL STRATEGY FOR GENEVA



My choices, Our mobility towards a plural mobility

- **THE ADVANTAGES OF THE FUTURE EXPRESS RAILWAY**



GENEVA DISTRICTS CHARACTERISTICS



> SWITZERLAND

41'300 km²

8'037'000 inhabitants

> CANTON OF GENEVA ○

282 km²

470'000 inhabitants

103 km of mutual border
with France

4,5 km of mutual border
with Switzerland



GROWING MOBILITY IN GENEVA



- > 550'000 journeys / 350'000 vehicles cross Geneva borders every day
- > 800'000 journeys/ day in the city center
- > Average of 3,5 journeys / day and inhabitant, using various transports means
- > Travel modes in the center of Geneva:
 - Pedestrian : 47%
 - Individual car : 26%
 - Public transport : 16%
 - Bike : 7 %
 - Motorcycle: 4 %



+5%

L'évolution du nombre de voitures immatriculées entre 1990 et 2010. En 2010, 214 000 voitures, soit 461 voitures pour 1000 habitants (en 1990, 530 voitures pour 1000 habitants).



+30%

Les comptages montrent une augmentation de 30% du nombre de vélos à Genève entre 2009 et 2011.



A PUBLIC TRANSPORT BOOM



Public transports market share is growing on all cross-border shifts :

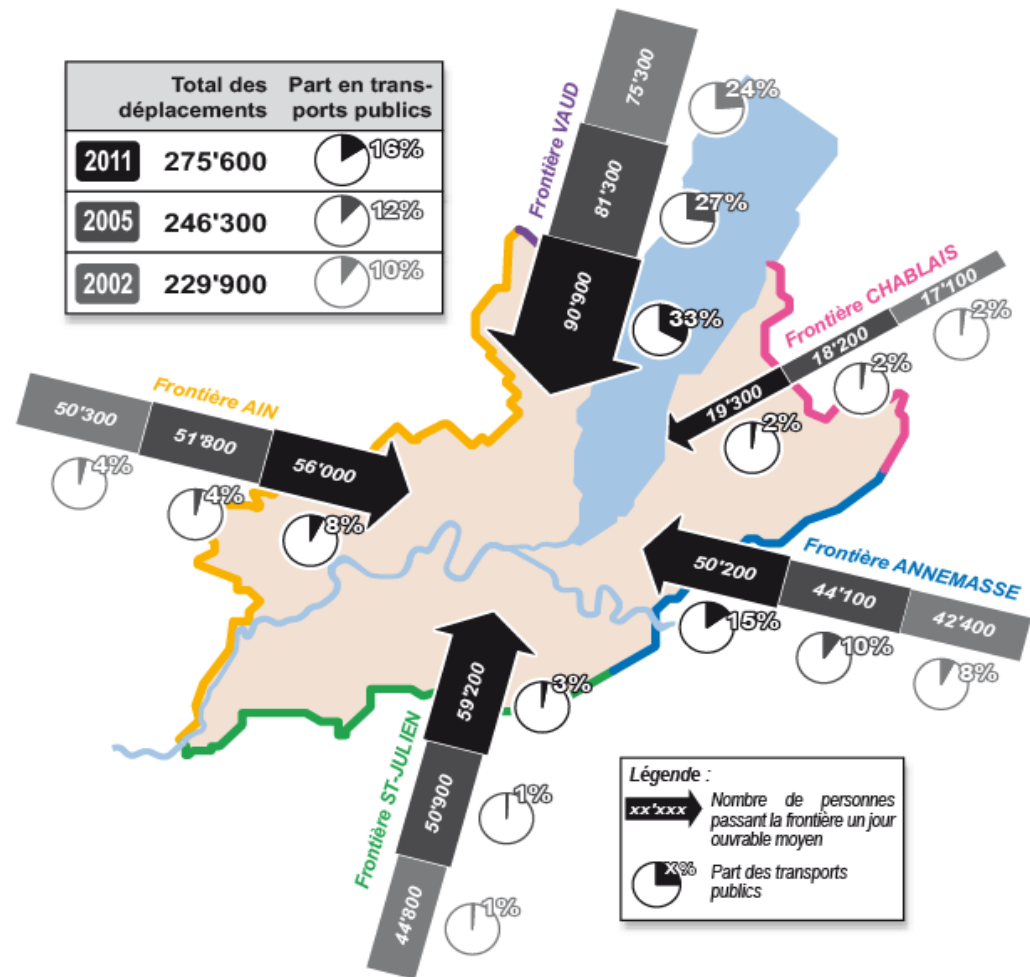
+ 48 % of passengers on cross-border trains since 2005

Public transport market share increasing from 12% in 2005 to 16% in 2011

Important growth forecast for 2030

+ 200 000 inhabitants

+ 100 000 employments



GENEVA - LAUSANNE IN 2030 : DRAMATIC GROWTH



2000 - 25'000 passengers/day between Lausanne and Geneva



1 = 2'000 voyageurs/jour

2010 - 50'000 passengers/day between Lausanne and Geneva



2030 - 100'000 passengers/day between Lausanne and Geneva



CFF

2010-2030: + 100%

2000 - 80'000 cars/day



2000 - 100'000 cars/day



2030 - 130'000 cars/day



OFRU

2010-2030: + 30%



- **STRONG ISSUES OF REGIONAL DEVELOPMENT**
- **A 3-STEPS STRATEGY**
- **MULTIMODAL STRATEGY OF GENEVA**
- **USE OF THE MOST EFFICIENT TRANSPORT MODE** *GENEVA : 2ND CITY BY DENSITY IN EUROPE*



MOBILITÉS 2030

STRATÉGIE MULTIMODALE
POUR GENEVE

DIRECTION GÉNÉRALE DE LA MOBILITÉ

DOCUMENT DÉFINITIF ADOPTÉ PAR LE
CONSEIL D'ÉTAT LE 15 MAI 2013

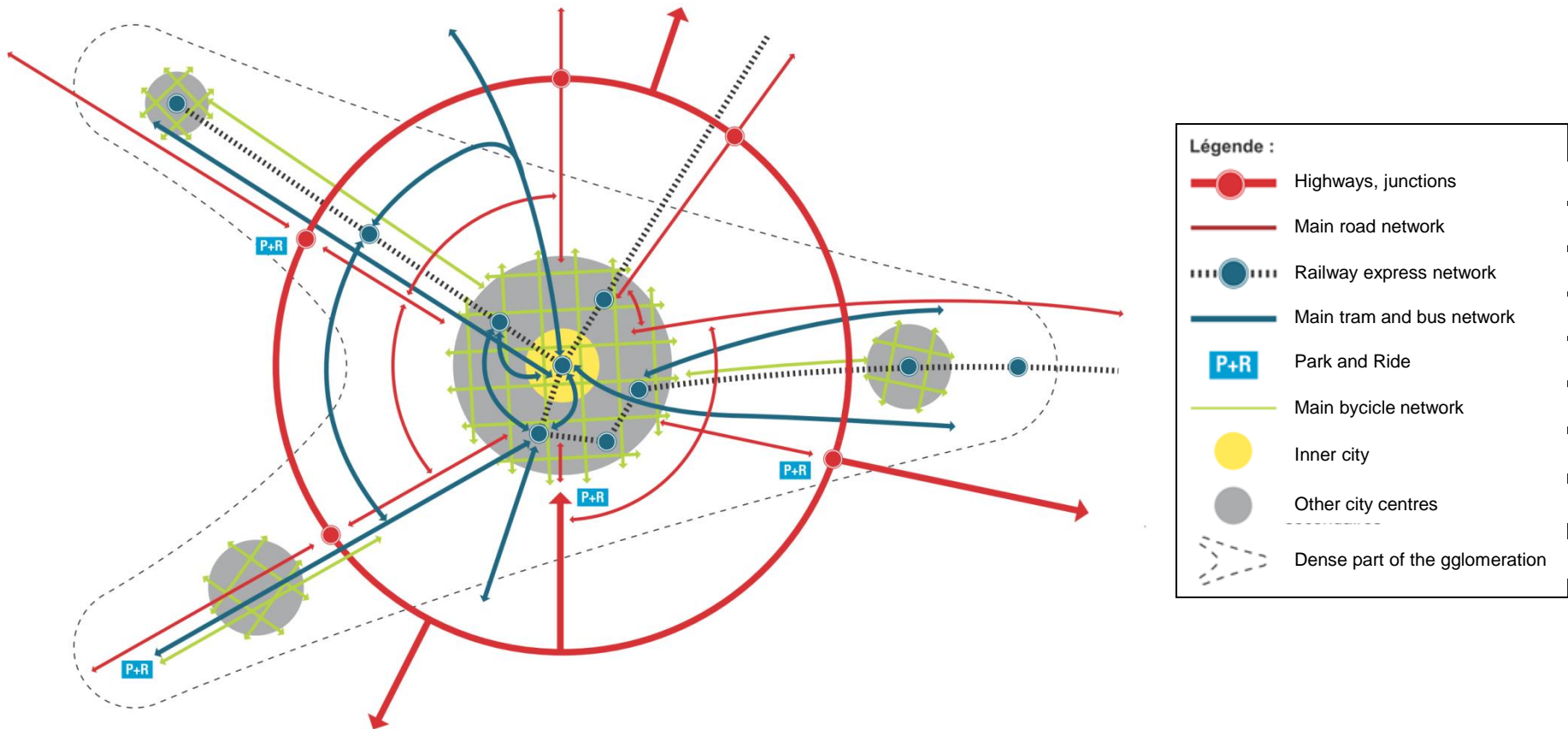


*Adopted by Geneva State
Council on May 15th 2013*

CONCEPT FOR TRANSPORTATION NETWORK



> HORIZON 2030





MAIN PROJECTS



- A1 Motorway increased capacity – 1st stage
- New junctions or junction adaptations
- Road network hierarchy : inner city capacity reduction



- Regional express network



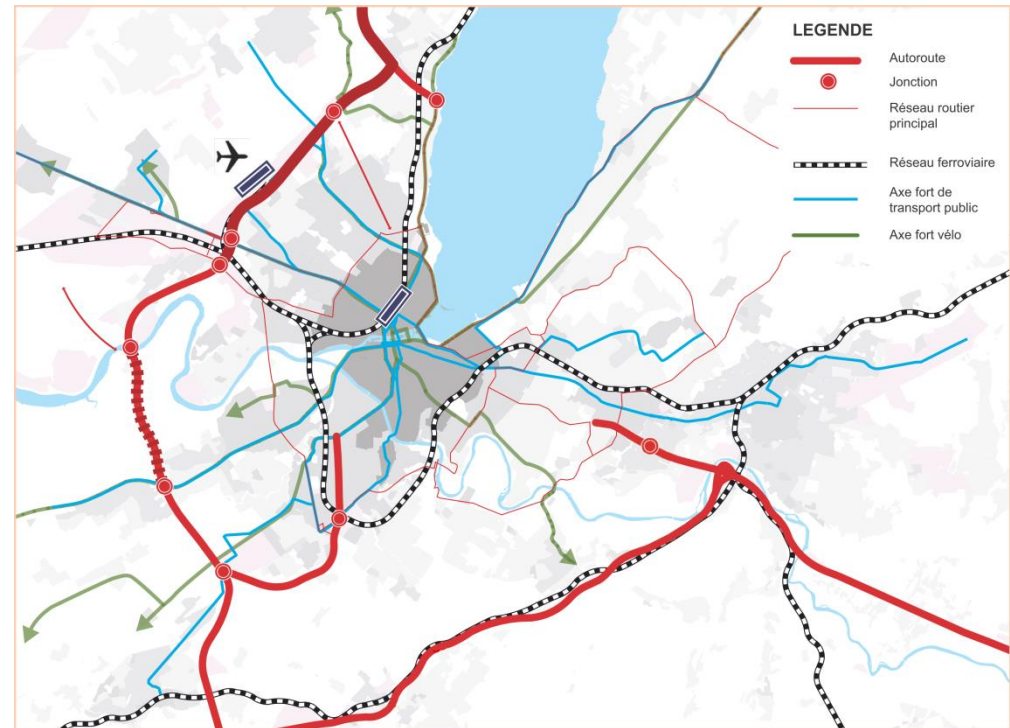
- Tram and bus lines extensions



- Bicycle sharing scheme
- Major bike lines : 1st stage
- Velostations development



- Initiate inner city pedestrianization





MAIN PROJECTS



- Motorway crossing Lake of Geneva
- Reinforced road capacity reductions in inner city



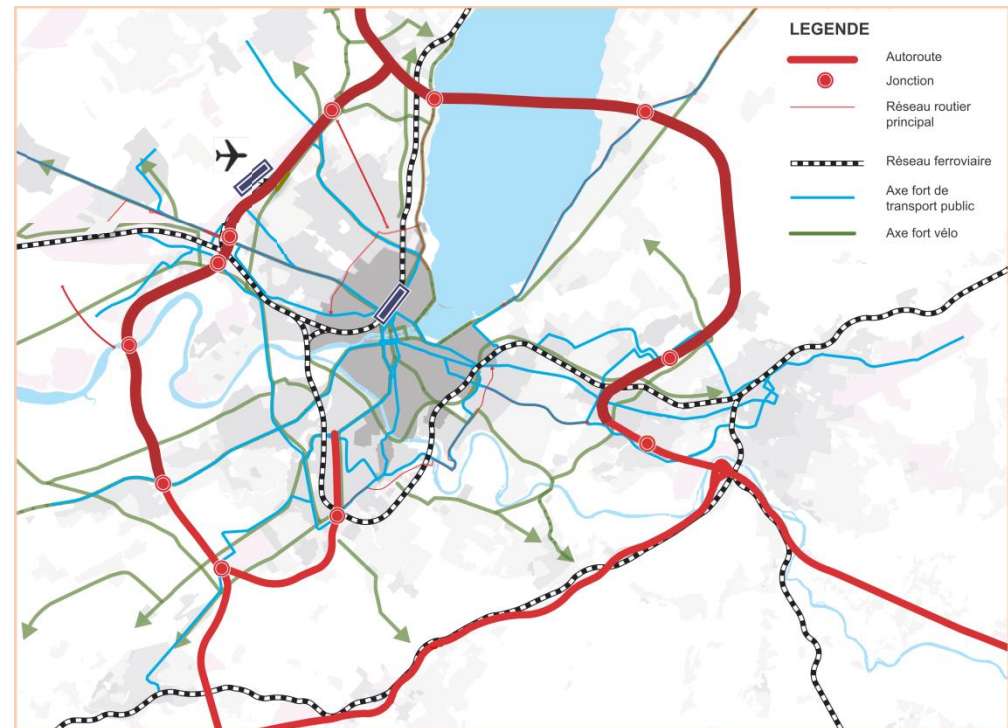
- Complementary tram network in city centre
- Complémentary public transport lines



- Major bike lines : 3rd stage



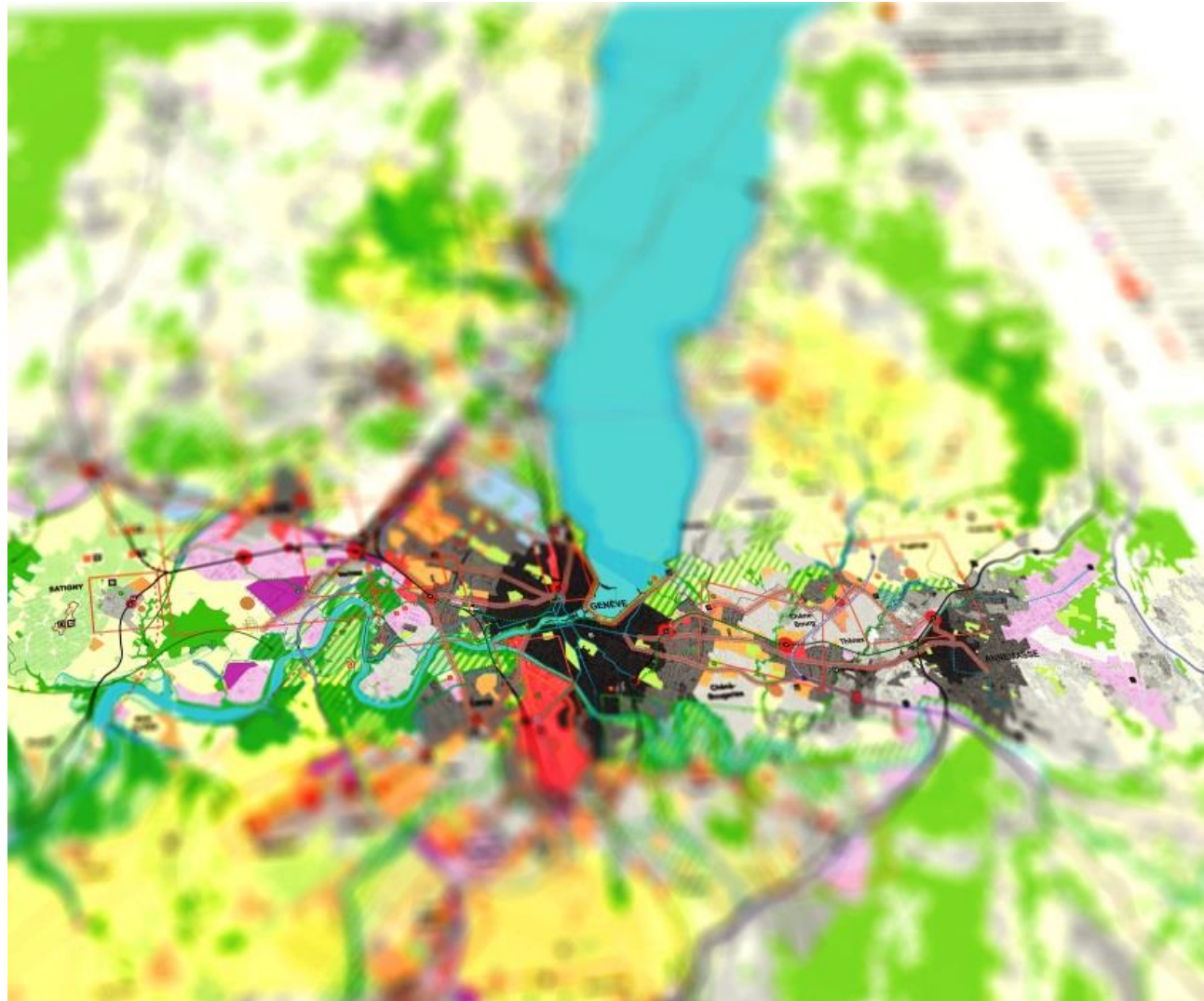
- Pedestrianization reinforcement in inner city



RER - RESEAU EXPRESS REGIONAL *



* Railway express network



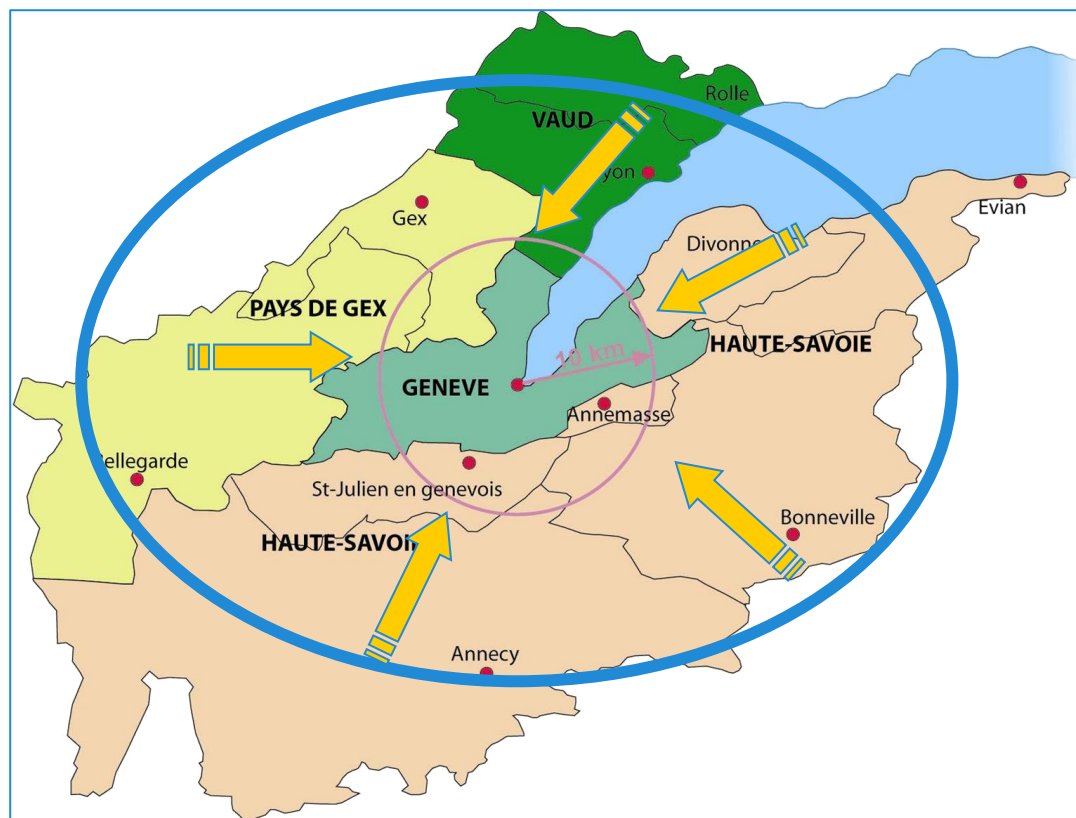
SCOPE OF THE EXPRESS RAIL NETWORK



- 2 COUNTRIES
- 2 SWISS CANTONS,
- 2 FRENCH DEPARTMENTS,
ONE REGION

- 2'000 KM²
210 TOWNS AND VILLAGES
900'000 INHABITANTS

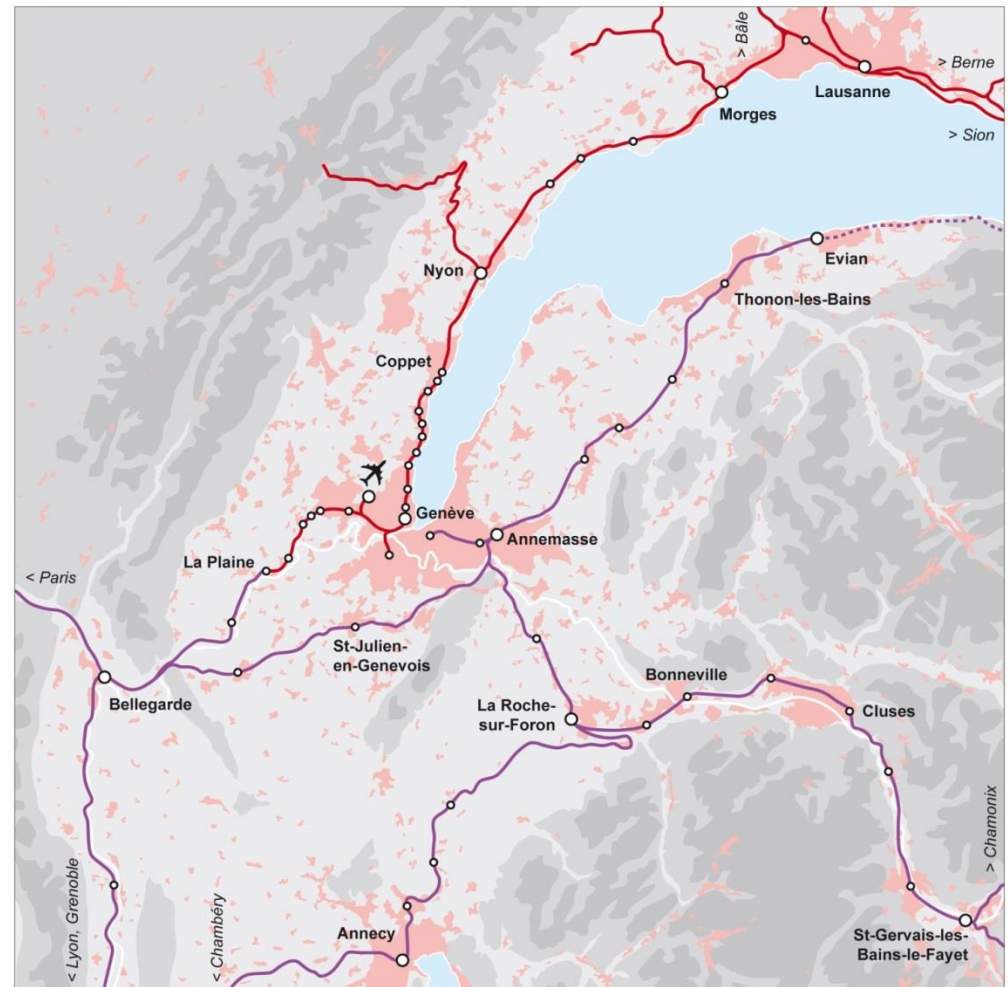
- JOB ATTRACTIVENESS IN
GENEVA FOR VAUD, AIN,
HAUTE-SAVOIE



RAILWAYS IN GENEVA AREA - 2013



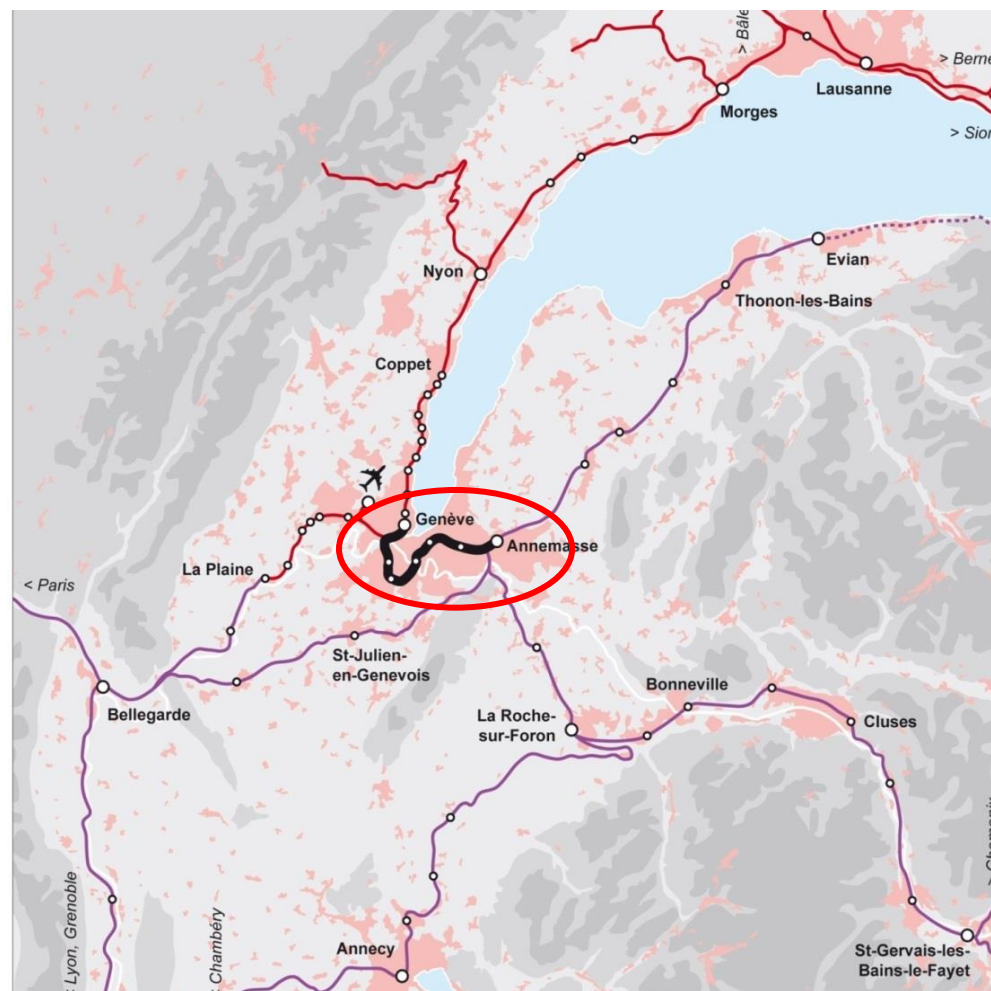
- Genève – Coppet in single line
- Genève – La Plaine, partly single line and close to saturation
- French rail network, aging and completely single line
- Two terminal stations in Geneva.



CEVA : A RAILWAY UNION FOR THE REGION IN 2019



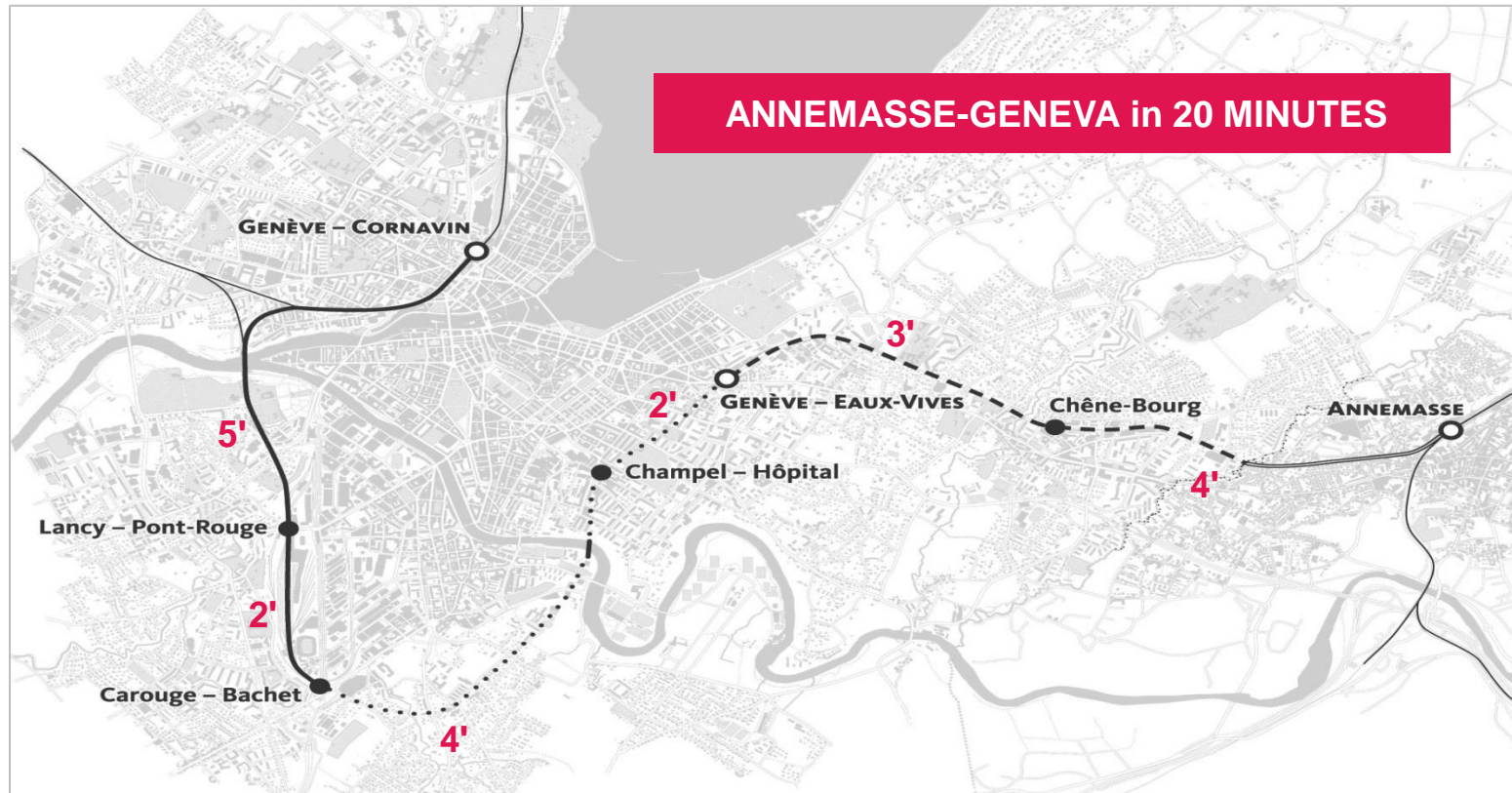
- 230 km lines
- 45 stations in France and Switzerland
- An unique new railway network for the whole cross-border region



CEVA, THE MISSING LINK IN THE HEART OF THE CITY



- Connecting Geneva with... Geneva
- 16 km of tunnel and cut and cover, integral double line
- 5 new stations in the heart of Geneva



A CROSS-BORDER COOPERATION



- Cooperation and cross-border partnership between 4 organization authorities, 2 operators and 2 infrastructure companies



Rhône-Alpes Région



Schweizerische Eidgenossenschaft
Confédération suisse
Confederazione Svizzera
Confederaziun svizra



➤ Investments:

- Switzerland infrastructure works financed by the Confederation and Geneva: 1.25 billion €
- Infrastructure projects financed in France by the State, Rhône-Alpes Region, départements and municipalities : 244 Million €

THE ADVANTAGES OF THE NEW RAIL LINK



More Offer

- +50% on F, +160% CH, up to 400% on Annemasse - Cornavin

More Speed

- Unmatched commercial speed: 50km / h (tram: 16km/h)
- Gain 15 to 30 minutes on average / fewer change

More consistency

- 6 trains / h - 7/7

More density :

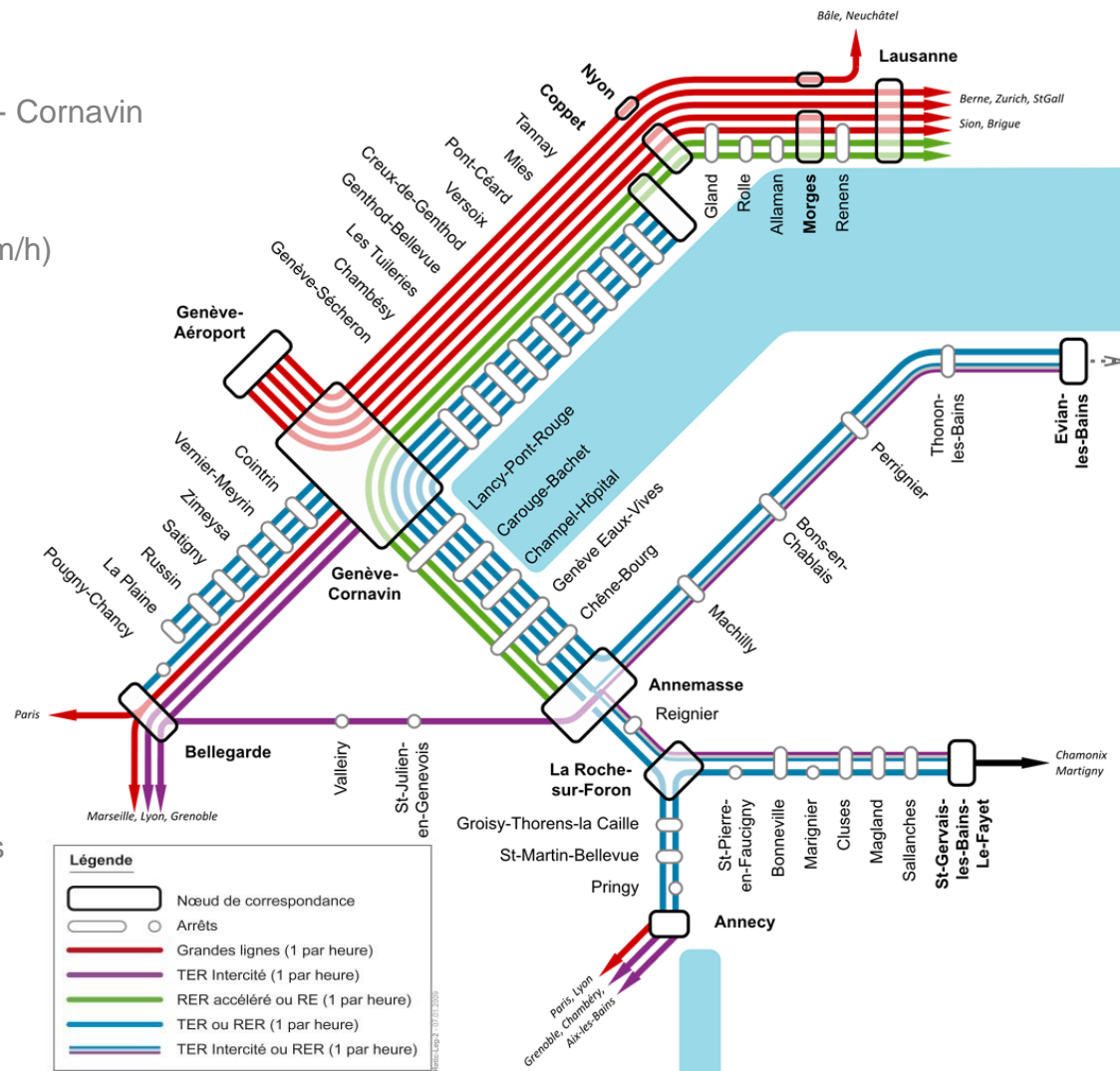
- Coppet - Annemasse: every 10 minutes
- La Plaine - Geneva every 30 minutes
- Bellegarde - Geneva: hourly
- Minimum 2 trains/h in each station during rush hour

More Continuity

- Coppet - Annecy and - Evian without changing trains

More Connections :

- Effective connections with TGV, Airport ...



03-07-2012

NEW STATIONS



Lancy - Pont Rouge



Eaux-Vives



Chêne - Bourg

CONCLUSION – THE NEW EXPRESS NETWORK BRINGS



MORE MOBILITY : NEW LINKS , NEW CONNECTIONS, NEW TRAVEL POSSIBILITIES



MORE FREEDOM : TRAVEL IN THE METROPOLITAN AREA WITH A SINGLE TICKET



MORE HOUSING AROUND TRAIN STATIONS



MORE PUBLIC SPACES AROUND STATIONS



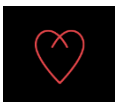
MORE GREENWAYS TO SIMPLIFY PEDESTRIANS AND CYCLISTS TRAVEL



MORE CULTURE - THE NEW THEATRE OF GENEVA ON THE SITE OF EAUX-VIVES



LESS POLLUTION : MORE THAN 240'000 PEOPLE LIVING OR WORKING WITHIN 500 METERS OF A FUTURE STOP. EASIER ACCESS TO PUBLIC TRANSPORT



MORE LINKS : CEVA AND ALL HIS ACCOMPLISHMENTS CREATE MORE LINKS, HUMAN, ECONOMIC , SOCIAL, CULTURAL , IN AN AREA THAT SHARES MORE THAN 2'000 YEARS OF COMMON HISTORY

THANK YOU



**MES CHOIX,
NOTRE MOBILITÉ**
VERS UNE MOBILITÉ PLURIELLE

www.ge.ch/mobilites2030