

Side illuminating lamp

72 GRE 20-22 October 2014

Accident risk at night
2 times higher

Fatalities:

Each 13-th accident during daytime
Each 4-th accident during night time

Many night time accidents are with
pedestrians and animals

American research result:

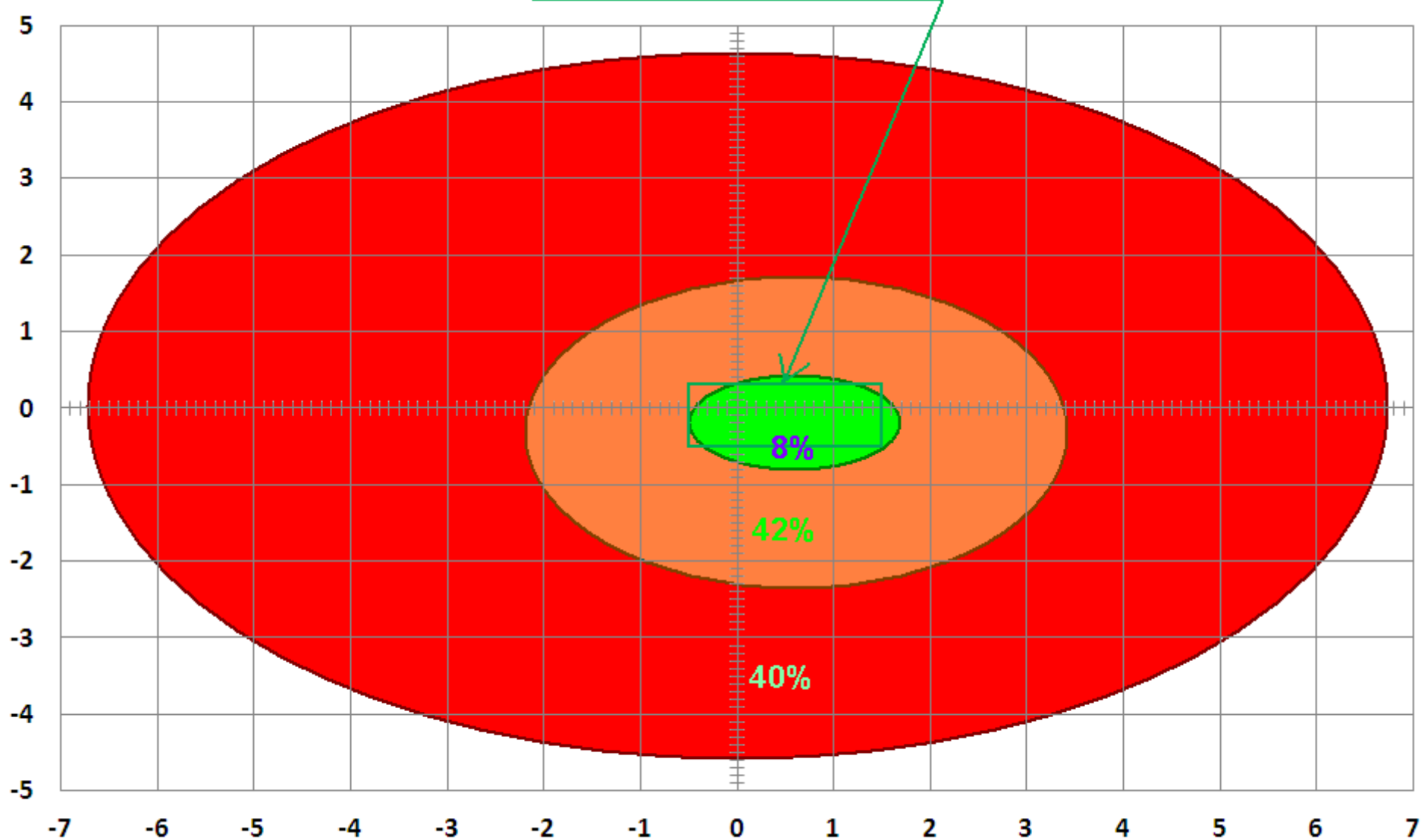
Significant percentage of nighttime traffic time takes place with speed higher than relative visibility distance

Polish research result:

- Most vehicles are driven with incorrectly aimed headlamps
- Manual levelling device is not used or is used incorrectly
- Awareness of driver is insufficient
- Quality of beam pattern in use is often insufficient

Headlights aim on the road

LEGAL REQUIREMENTS



RESULTS

Insufficient visibility

Glare

RESULTS

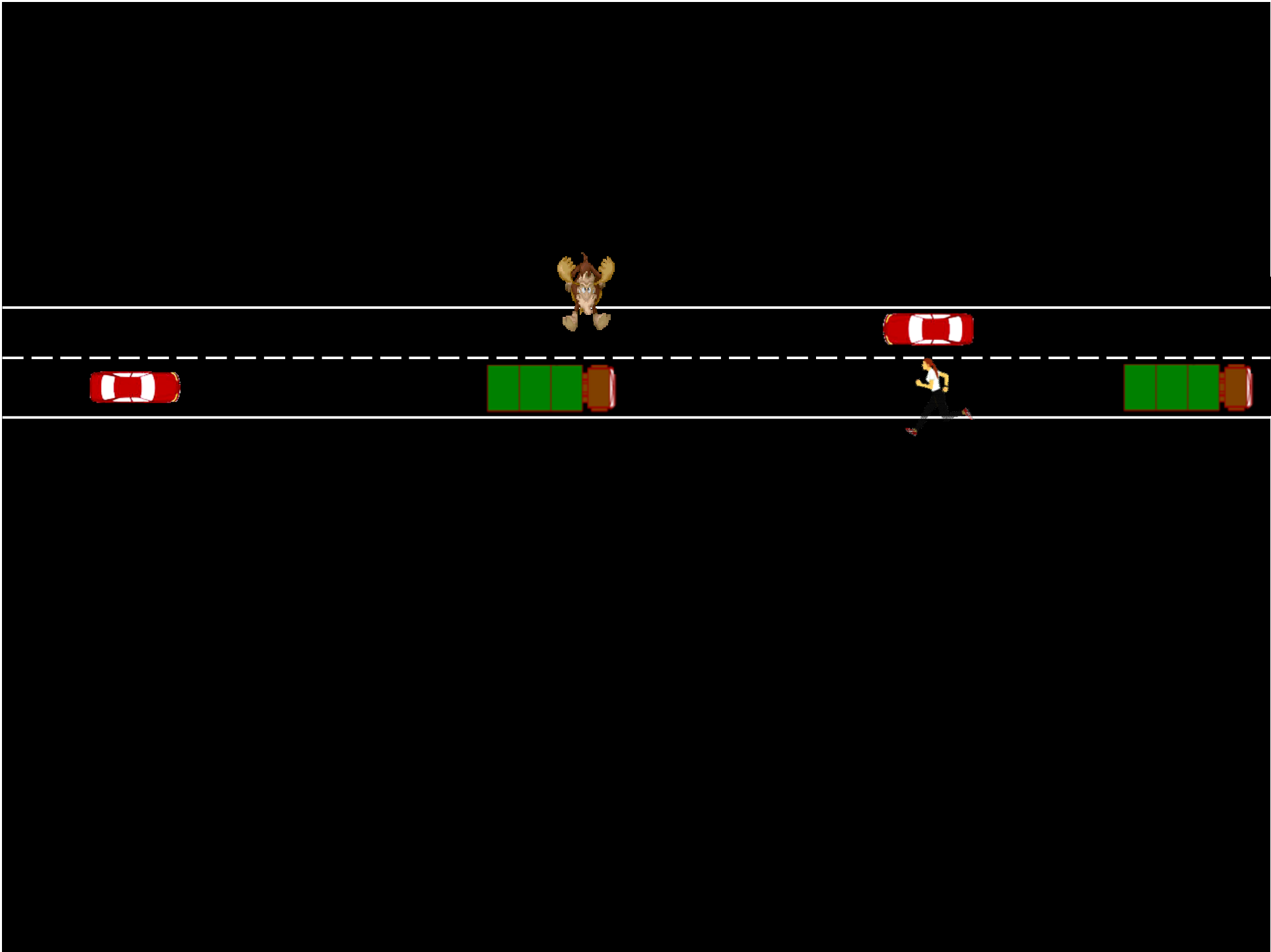


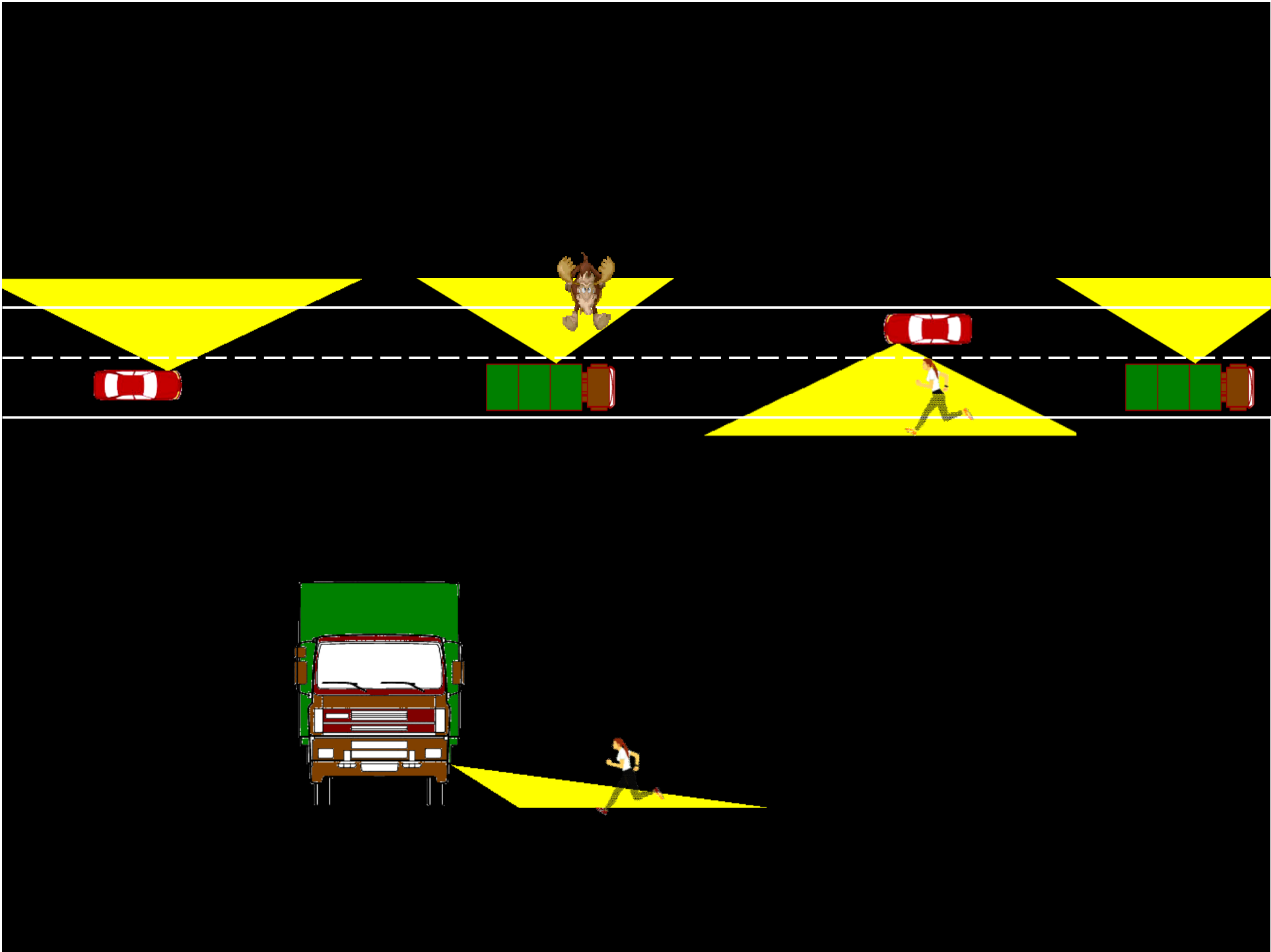
source: <http://wedlinydomowe.pl/>

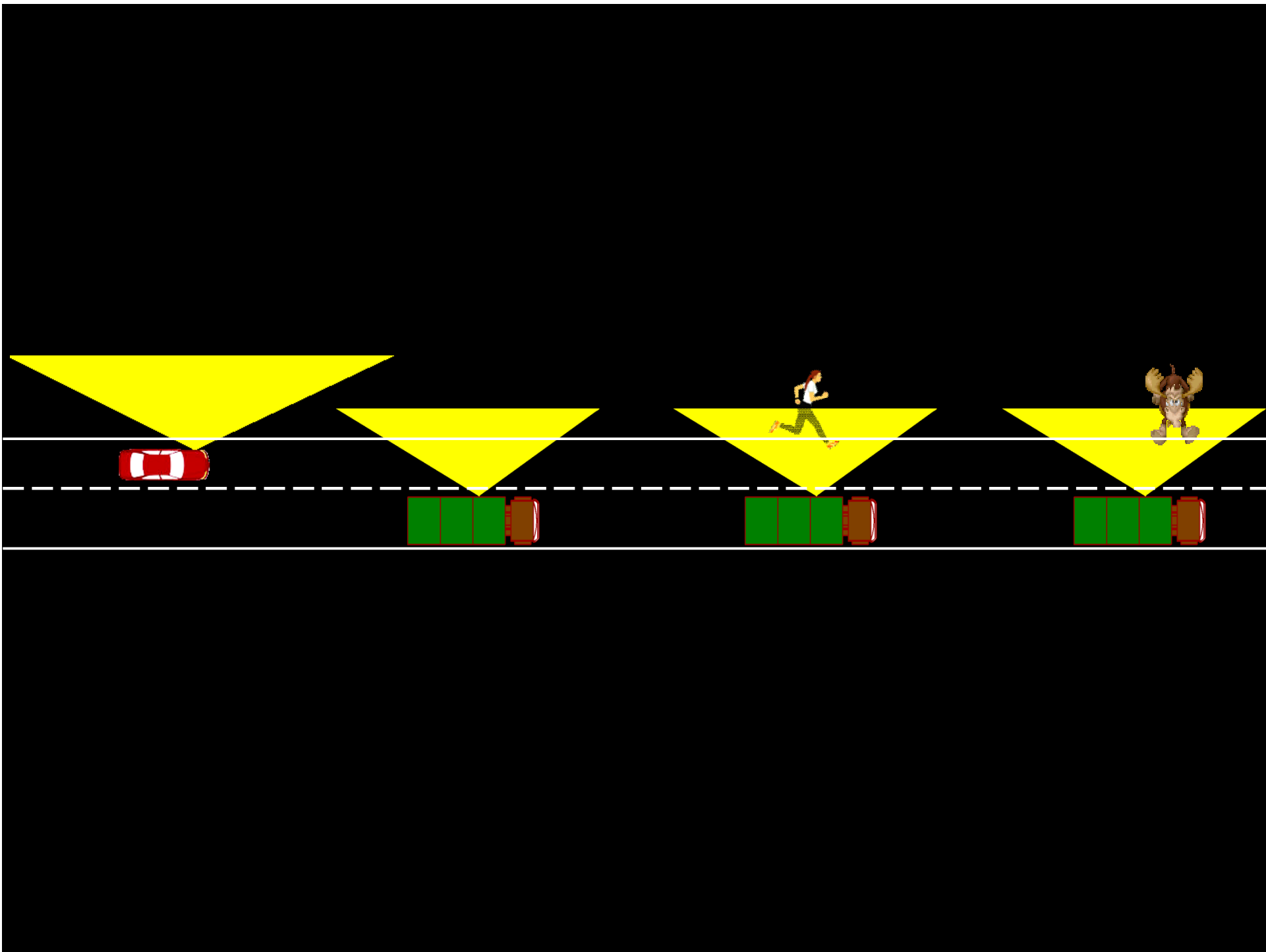
PROPOSAL

Side illuminating lamp

(similar to cornering lamp)

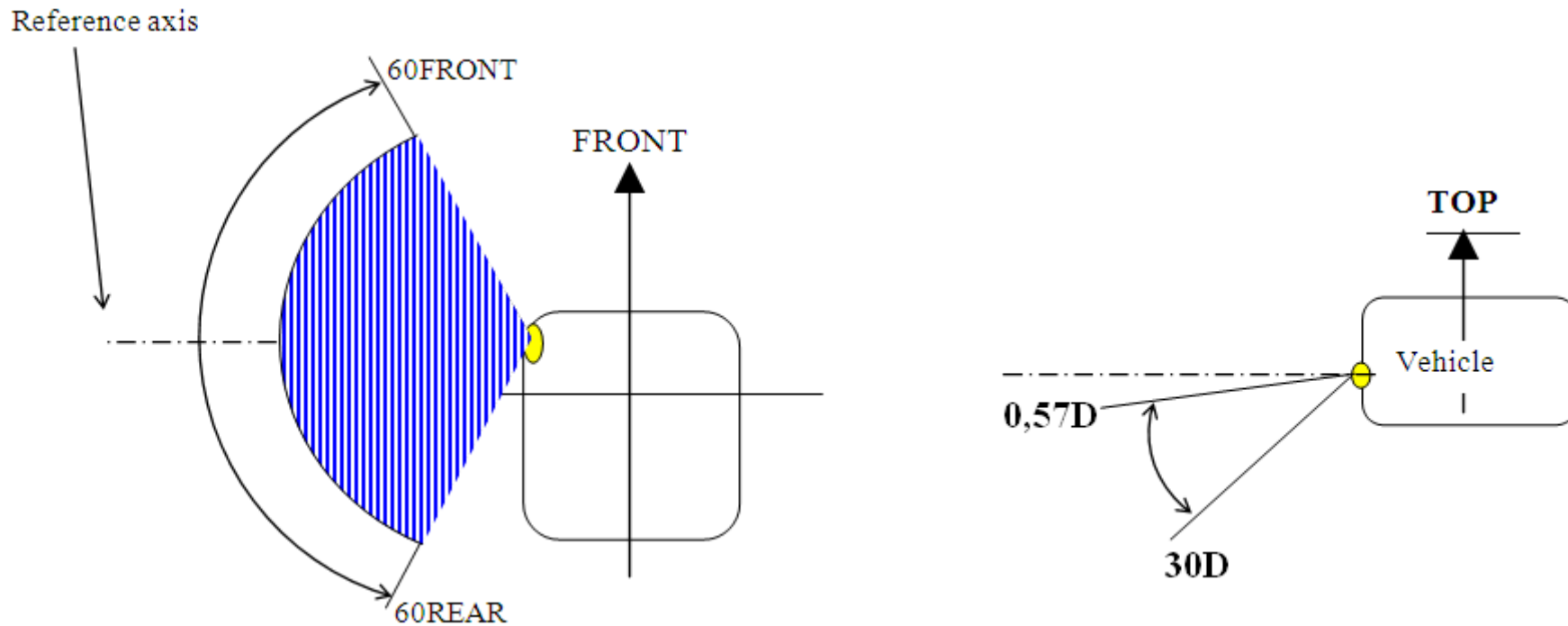




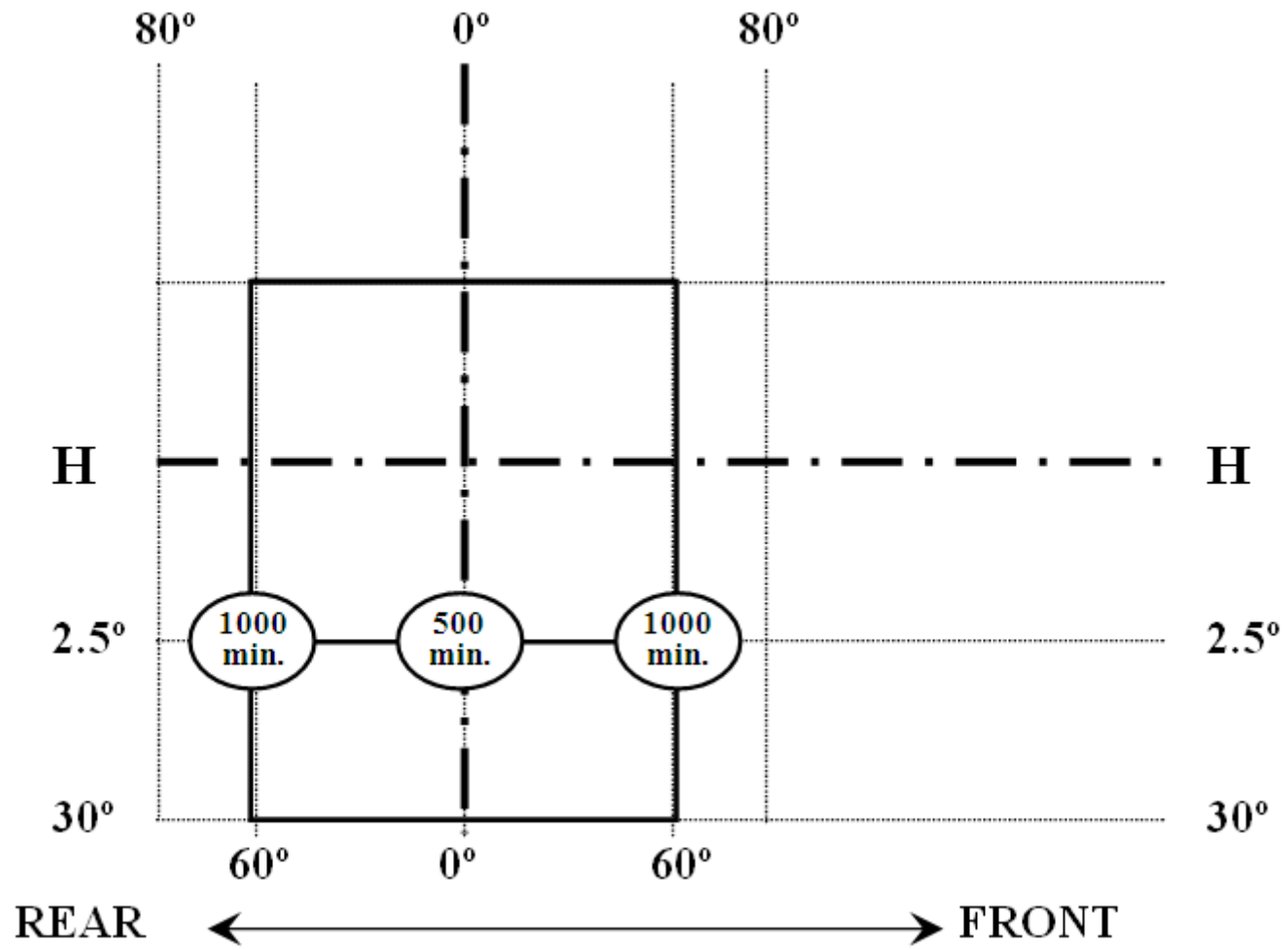


Field of geometric visibility

Lamp should be basically invisible for road users



Photometry



USE:

- With passing beam
- During nighttime
- Outside built-up areas

To be checked:

Need of cut-off and aiming ?

(2.5°; 4,5% down ?)

Your reactions, comments, suggestions,
will be appreciated



**THANK YOU FOR YOUR
ATTENTION**