

ID	Task Name	Start	Finish	8			2009				2010				2011				2012				2013			
				tr	tr	tr	tr	tr	tr	tr	tr	tr	tr	tr	tr	tr	tr	tr	tr	tr	tr	tr	tr	tr		
1																										
2	15. Test Procedure Development	Mon 1/4/10	Mon 3/5/12																							
3	Terminology	Mon 1/4/10	Wed 6/30/10																							
4	Units	Mon 1/4/10	Wed 6/30/10																							
5	15.a Test Procedure	Mon 7/5/10	Thu 6/30/11																							
6	Output Test Metrics	Mon 7/5/10	Fri 12/31/10																							
7	Emissions Constituents	Mon 7/5/10	Fri 12/31/10																							
8	Fuel Consumption	Mon 7/5/10	Fri 12/31/10																							
9	Testing	Mon 7/5/10	Thu 6/30/11																							
10	Liquid Fuel	Mon 7/5/10	Fri 12/31/10																							
11	Vehicle Pre-conditioning	Mon 7/5/10	Fri 12/31/10																							
12	Test Procedure	Mon 7/5/10	Fri 12/31/10																							
13	Gaseous Fuel	Mon 7/5/10	Fri 12/31/10																							
14	Vehicle Pre-conditioning	Mon 7/5/10	Fri 12/31/10																							
15	Test Procedure	Mon 7/5/10	Fri 12/31/10																							
16	HEV	Mon 7/5/10	Fri 12/31/10																							
17	Vehicle Pre-conditioning	Mon 7/5/10	Fri 12/31/10																							
18	Test Procedure	Mon 7/5/10	Fri 12/31/10																							
19	PHEV	Mon 7/5/10	Fri 12/31/10																							
20	Vehicle Pre-conditioning	Mon 7/5/10	Fri 12/31/10																							
21	Test Procedure	Mon 7/5/10	Fri 12/31/10																							
22	EV	Mon 7/5/10	Fri 12/31/10																							
23	Vehicle Pre-conditioning	Mon 7/5/10	Fri 12/31/10																							
24	Test Procedure	Mon 7/5/10	Fri 12/31/10																							
25	FCV	Mon 7/5/10	Fri 12/31/10																							
26	Vehicle Pre-conditioning	Mon 7/5/10	Fri 12/31/10																							
27	Test Procedure	Mon 7/5/10	Fri 12/31/10																							
28	Inertia Weight Class	Wed 9/1/10	Tue 3/8/11																							
29	Calculation Formulae	Mon 7/5/10	Fri 12/31/10																							
30	Road Load Measurement	Mon 1/3/11	Thu 6/30/11																							
31	Coast down	Mon 1/3/11	Thu 6/30/11																							
32	Dyno simulation	Mon 1/3/11	Thu 6/30/11																							
33	Gear shift points	Mon 1/3/11	Thu 6/30/11																							
34	15.b Test Equipment	Mon 1/3/11	Thu 6/30/11																							
35	General Test Equipment (Dynamometer, video driver's aid, cooling fans, voltage and amperage measurement)	Mon 1/3/11	Thu 6/30/11																							
36	Sampling Systems	Mon 1/3/11	Thu 6/30/11																							
37	Measurement of ambient conditions	Mon 1/3/11	Thu 6/30/11																							
38	Flow-related measurements	Mon 1/3/11	Thu 6/30/11																							
39	CO and CO2 Measurements	Mon 1/3/11	Thu 6/30/11																							
40	Methane and NMHC Measurement	Mon 1/3/11	Thu 6/30/11																							
41	NOx and N2O Measurements	Mon 1/3/11	Thu 6/30/11																							
42	PM Measurement	Mon 1/3/11	Thu 6/30/11																							
43	Sampling System	Mon 1/3/11	Thu 6/30/11																							

Start of Validation
Test 2
- TP required.


Start of Validation
Test 2
- TP required.

Project: Test Procedure Rev D
Date: Mon 12/21/09

Task 

Split 

Progress 


Milestone 

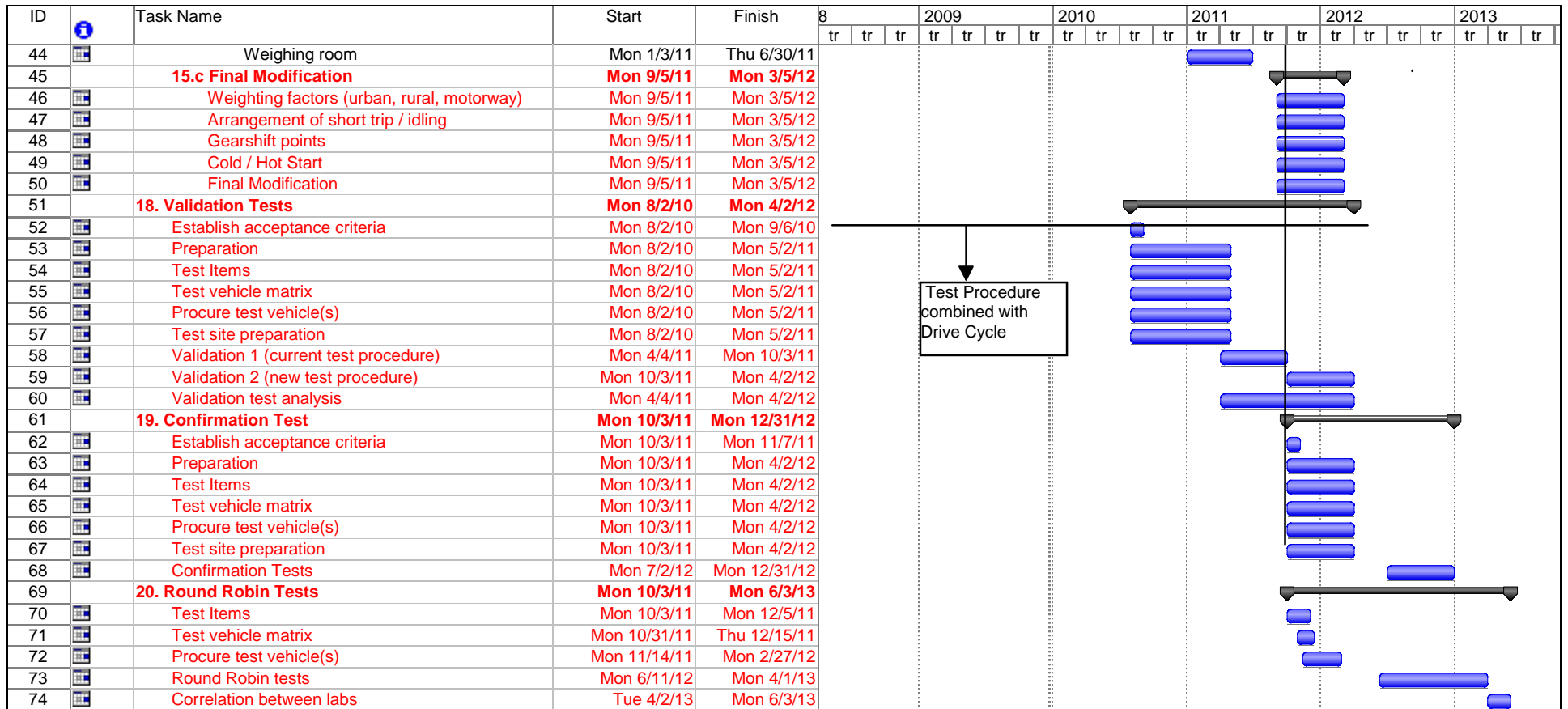
Summary 

Project Summary 




External Tasks 

External Milestone 

Deadline 



Project: Test Procedure Rev D
Date: Mon 12/21/09

Task 
Split 
Progress 

Milestone 
Summary 
Project Summary 

External Tasks 
External Milestone 
Deadline 