



Secretariat

Distr.
GENERAL

ST/SG/AC.10/36/Add.2/Corr.1
2 September 2009

ENGLISH
Original: ENGLISH AND FRENCH

**COMMITTEE OF EXPERTS ON THE
TRANSPORT OF DANGEROUS GOODS AND ON THE
GLOBALLY HARMONIZED SYSTEM OF CLASSIFICATION
AND LABELLING OF CHEMICALS**

**REPORT OF THE COMMITTEE OF EXPERTS ON THE TRANSPORT OF
DANGEROUS GOODS AND ON THE GLOBALLY HARMONIZED SYSTEM OF
CLASSIFICATION AND LABELLING OF CHEMICALS ON ITS FOURTH SESSION
(Geneva, 12 December 2008)**

Addendum

Annex II

Amendments to the fourth revised edition of the Recommendations on the Transport of
Dangerous Goods, Manual of Tests and Criteria (ST/SG/AC.10/11/Rev.4)

Corrigendum

1. Page 7, 16.6.1.4.6
Not applicable to English
2. Page 8, 16.7.1.4 (b)
For $80 \pm 3 \text{ g/m}^2$ read $80 \pm 10 \text{ g/m}^2$
3. Page 10, 32.4.1, under National standards
The four ASTM standards should read

ASTM D3828-07a, Standard Test Methods for Flash Point by Small Scale Closed Cup Tester

ASTM D56-05, Standard Test Method for Flash Point by Tag Closed Cup Tester

ASTM D3278-96(2004)e1, Standard Test Methods for Flash Point of Liquids by Small Scale Closed-Cup Apparatus

ASTM D93-08, Standard Test Methods for Flash Point by Pensky-Martens Closed Cup Tester

4. Page 11, footnote 2

Insert of the European Parliament and of the Council after No 1907/2006

5. Page 16, paragraph 2.6, first sentence

For substance contained within the cone read top of the cone

6. Page 16, paragraph 3.1

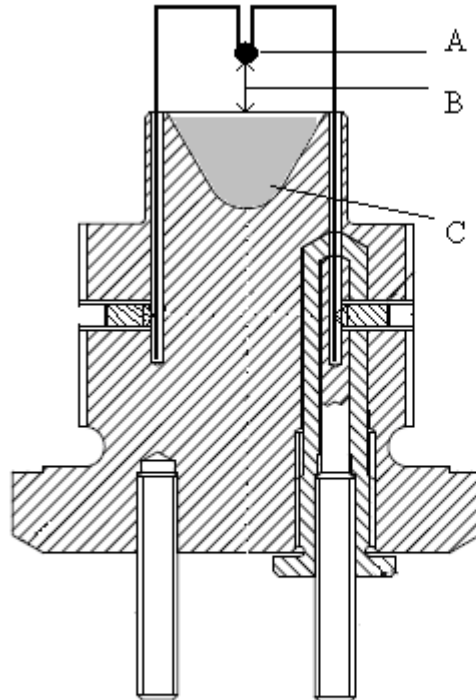
Delete the third sentence.

7. Page 16, paragraph 3.1, fifth sentence

For aluminium bursting disc read brass or aluminium bursting disc

8. Page 17, Figure A7.1

Replace Figure A7.1 with the figure below.



-
- (A) Fusehead
(B) 10 mm gap
(C) Substance under test
-

9. Page 18, Figure A7.2

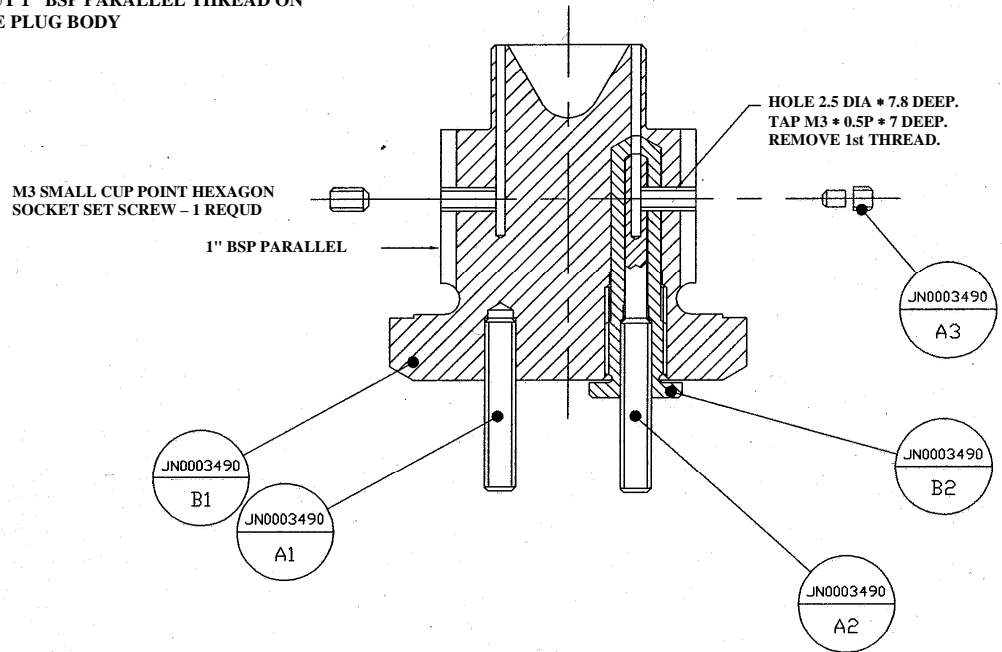
Replace Figure A7.2 with the figure below.

10. Page 19, Figure A7.3

Replace Figure A7.3 with the figure below.

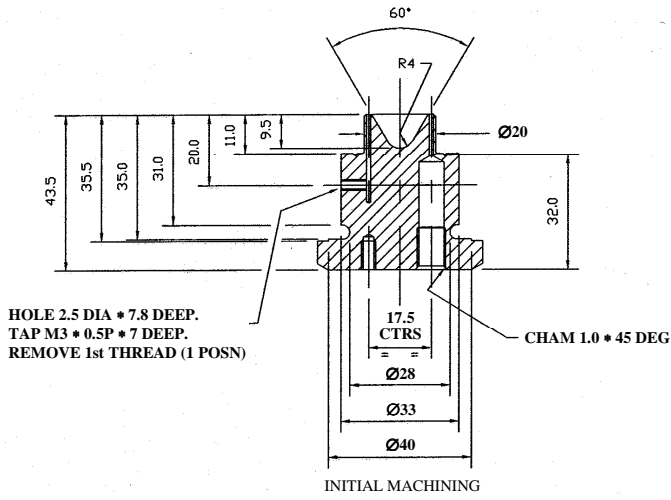
MACHINING/ASSEMBLY SEQUENCE

1. SCREW JN0003490:B2 INTO PRESSURE PLUG BODY
2. SCREW JN0003490:A2 INTO JN0003490:B2
3. DRILL & TAP M3 * 0.5P * 7 DEEP HOLE
4. SCREWCUT 1" BSP PARALLEL THREAD ON PRESSURE PLUG BODY

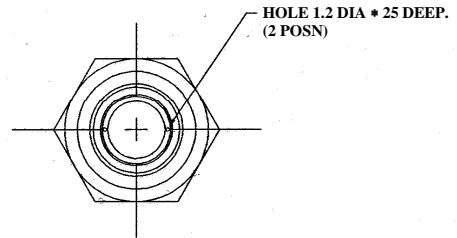


11. Page 20, Figure A7.4

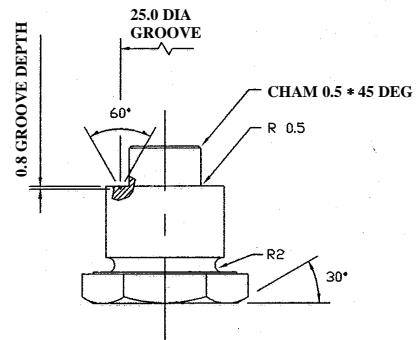
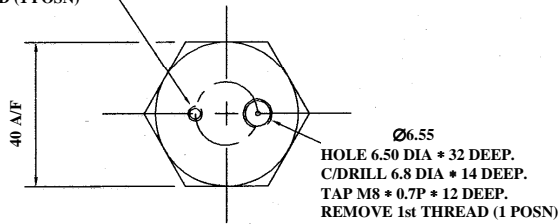
Replace Figure A7.4 with the figure below.



HOLE 2.5 DIA * 7.8 DEEP.
TAP M3 * 0.5P * 7 DEEP.
REMOVE 1st THREAD (1 POSN)

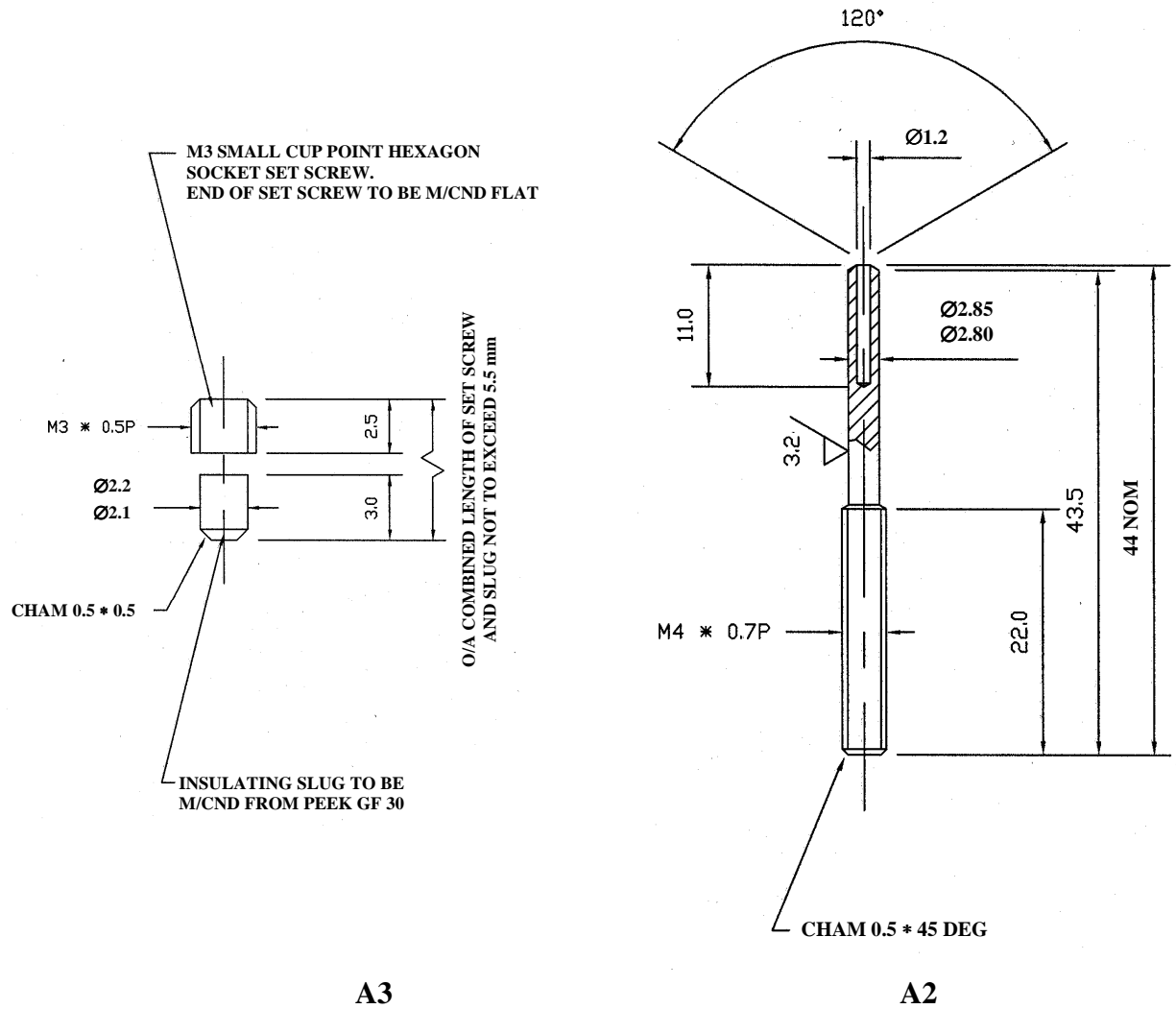


HOLE 3.3 DIA * 10 DEEP.
TAP M4 * 0.7P * 8 DEEP.
REMOVE 1st THREAD (1 POSN)



12. Page 21, Figure A7.5

Replace Figure A7.5 with the figure below.

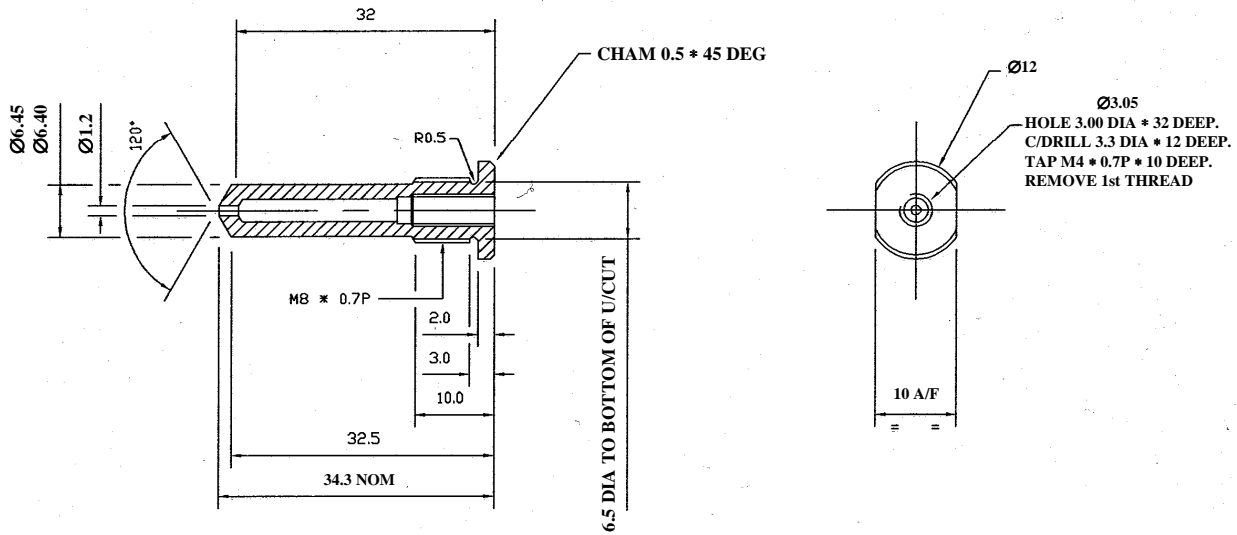


A3

A2

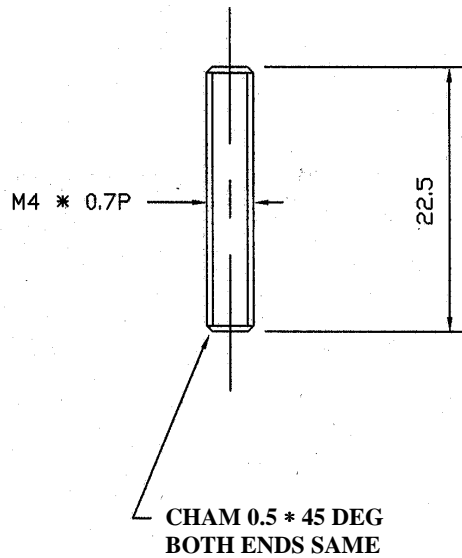
13. Page 22, Figure A7.6

Replace Figure A7.6 with the figure below.



14. Page 22, Figure A7.7

Replace Figure A7.7 with the figure below.



15. Page 23, before existing Figure A7.8

Insert a new Figure A7.8 reading

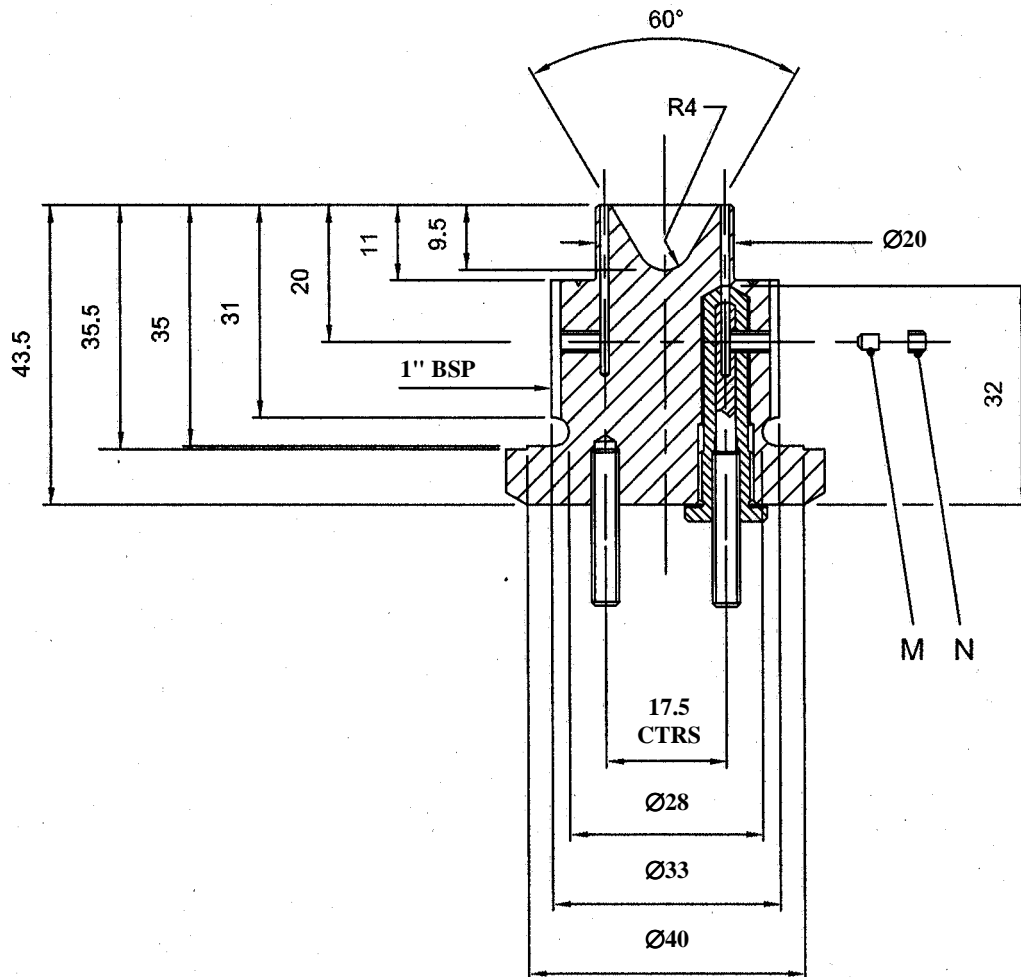


Figure A7.8: ASSEMBLED CONE IN PLUG

16. Page 23, existing Figure A7.8

Renumber as Figure A7.9.
