



**Economic and Social
Council**

Distr.
GENERAL

ECE/TRANS/WP.15/AC.2/2008/3/Add.1
13 November 2007

ENGLISH
Original: FRENCH

ECONOMIC COMMISSION FOR EUROPE

INLAND TRANSPORT COMMITTEE

Working Party on the Transport of Dangerous Goods

Joint Meeting of Experts on the Regulations annexed to the
European Agreement concerning the International Carriage
of Dangerous Goods by Inland Waterways (ADN)*

Twelfth session
Geneva, 21-25 January 2008
Item 4 (b) of the provisional agenda

**PROPOSALS FOR AMENDMENTS TO THE REGULATIONS
ANNEXED TO ADN****

Protection of the aquatic environment

Note by the secretariat

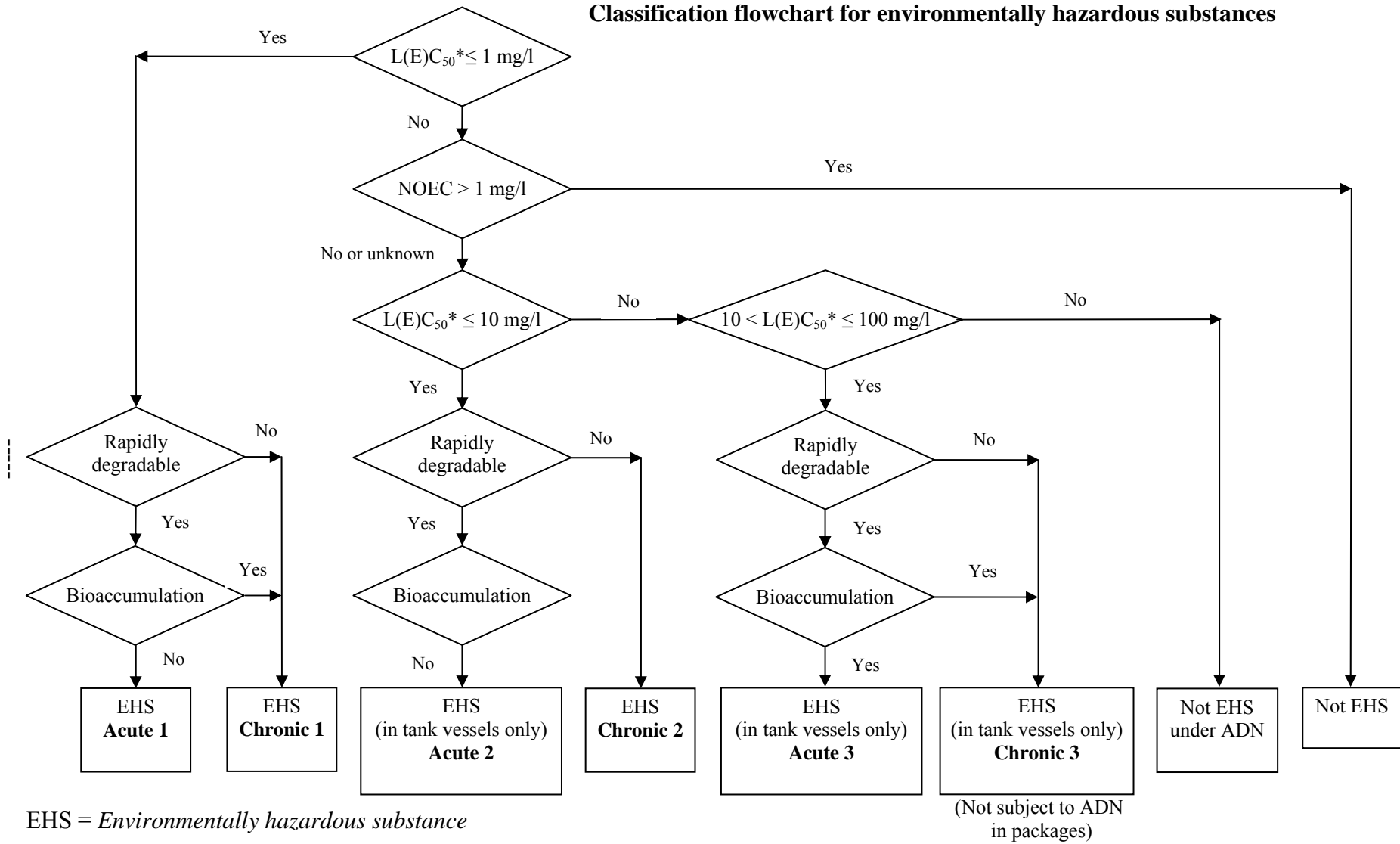
Addendum

* This meeting is organized jointly by the Economic Commission for Europe and the Central Commission for the Navigation of the Rhine.

** Distributed in German by the Central Commission for the Navigation of the Rhine under the symbol CCNR/ZKR/ADN/WP.15/AC.2/2008/3/Add.1.

1. The secretariat's attention has been drawn to the fact that the 2009 draft amendments to RID/ADR provide for a classification flowchart (taken from the UN Model Regulations, para. 2.9.3.3) in 2.2.9.1.10 of RID/ADR (see ECE/TRANS/WP.15/AC.1/2007/51, annex 2).
2. This flowchart was not reproduced in the secretariat's proposal because it applies only to carriage in packages and could create confusion where transport in tank vessels is concerned. However, should the Joint Meeting of Experts consider such a flowchart useful, the secretariat has prepared a more complete one, reproduced below, which may be applied to both carriage in packages and transport in tank vessels, for example as 2.2.9.1.10.4 or 2.4.3.2.

Classification flowchart for environmentally hazardous substances



EHS = *Environmentally hazardous substance*

(Not subject to ADN in packages)