



Informal document No. GRRF-62-02
(62nd GRRF, 25-28 September 2007,
agenda item 9.(e))

ASP- Additional Sidewall Protection

Presentation for GRRF
62nd session
25–28 September 2007



Definition ASP

- *"Additional Sidewall Protection (ASP)" is an additional protective rubber layer applied to one sidewall only of the casing for improving resistance against sidewall abrasion."*
- Purpose of ASP:

... "enhancing safety and durability of tyres in urban use" "to provide additional abrasion protection of the sidewall in aggressive urban usage"



How does it work?

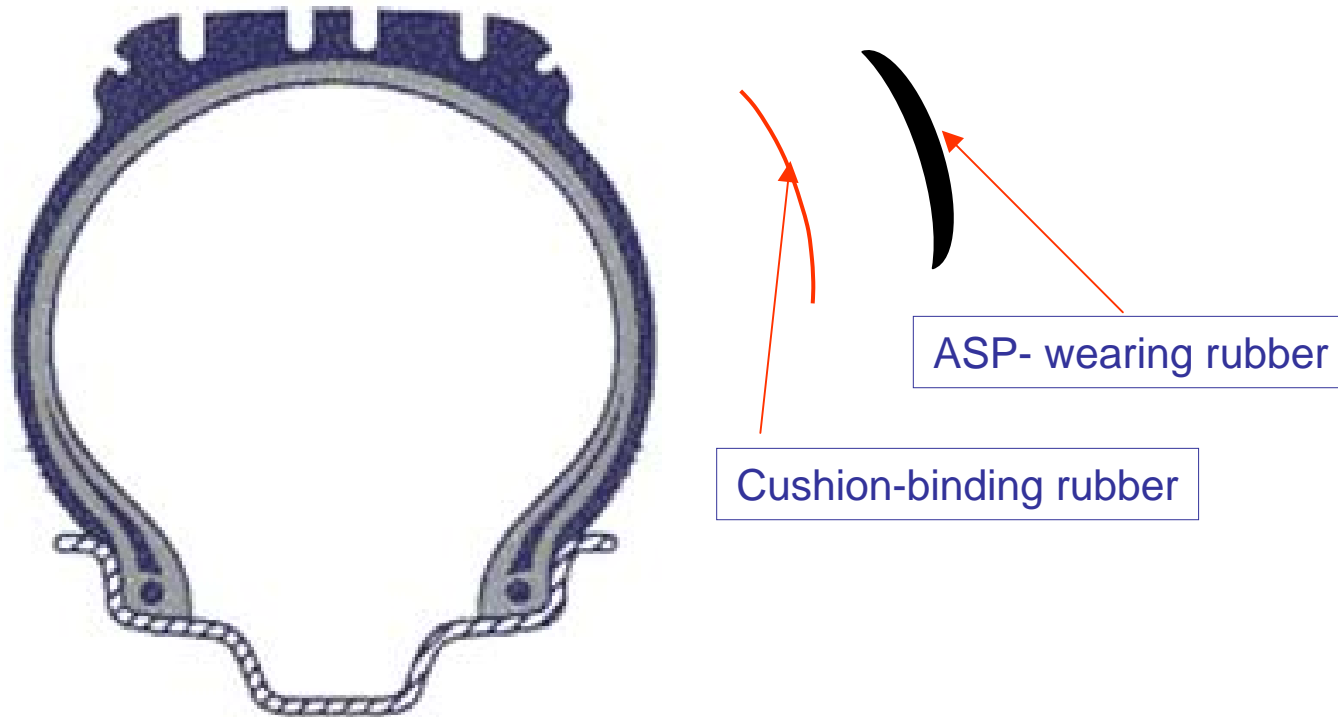
- Casing sidewall is inspected and buffed

PRECURE:

- Cushion is applied
- Pre-cured ASP is applied

MOLDCURE:

- Un-vulcanized wear rubber applied





Application cushion





Application of ASP





ASP ready for vulcanization





The “issue”

- For tyres with overall max section width limited to +2% the application of ASP might exceed max overall section width of ECE 109 :

315/80R22.5

315/70R22.5

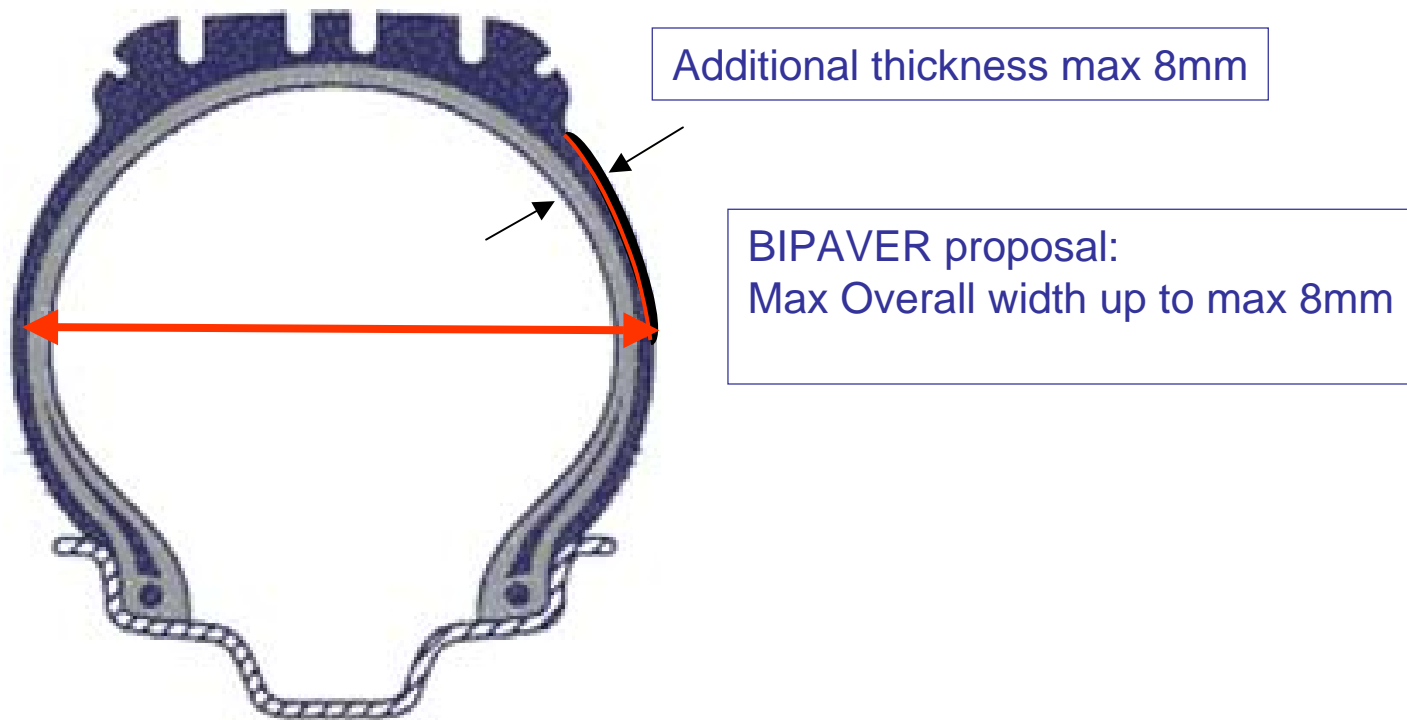
13R22.5

- The BIPAVER proposal only deal with tyres exceeding max ECE-R109 Overall section width and **with a section width exceeding 305mm** .



Final Product

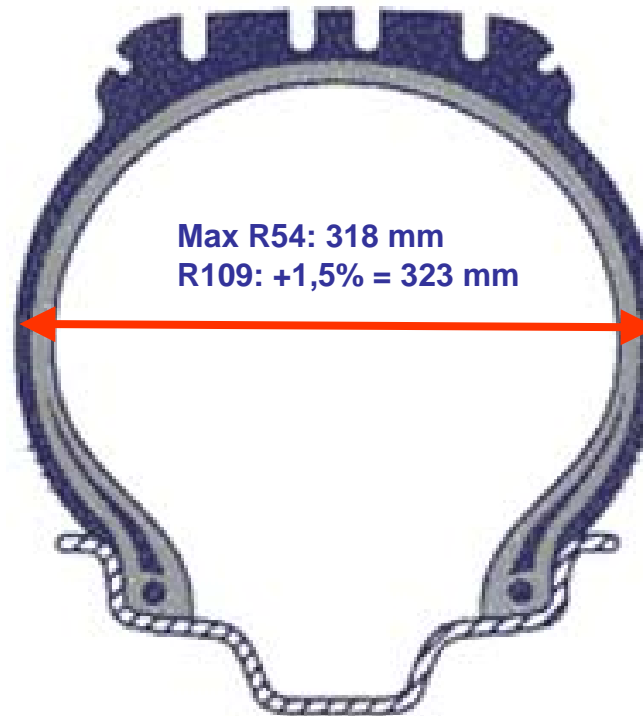
- Total section width is Max 8 mm wider than max section width of a new original tire permitted by Reg. 54.





Example: 315/80R22.5

Amended ECE 109: Max R54 + 1,5 % = 323 mm





Example: 315/80R22.5

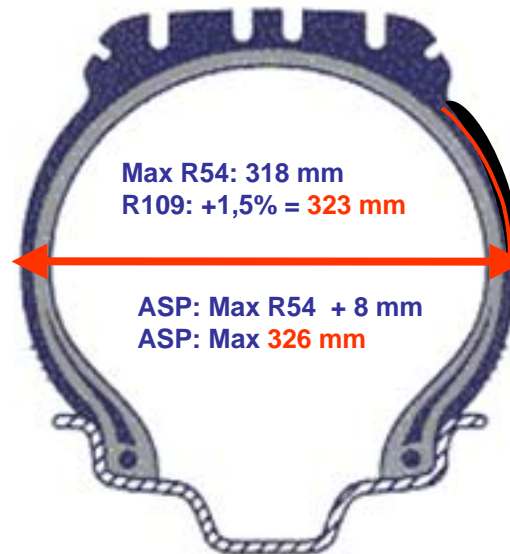
Amended ECE 109: Max R54 + 1,5 % = 323 mm

ASP only on **one side** permissible, when tyre is exceeding 323 mm !

Facing inwards:

The word **ASP**

No additional reduction
of dual spacing
vs. amended ECE 109



Facing outwards:

The word **ASP**

Marking **OUTSIDE**