



# Activities of the European Commission - Eurostat in inland transport statistics

Agenda item N° 9.b  
7- 9 June 2006 - Geneva

Yves MAHIEU  
European Commission  
Eurostat/G5



# Summary

- Where ?
- Why ?
- For whom ?
- What (in general)
- What (in 2006 – of particular interest for inland transport) ?
- When (next ESS meetings) ?



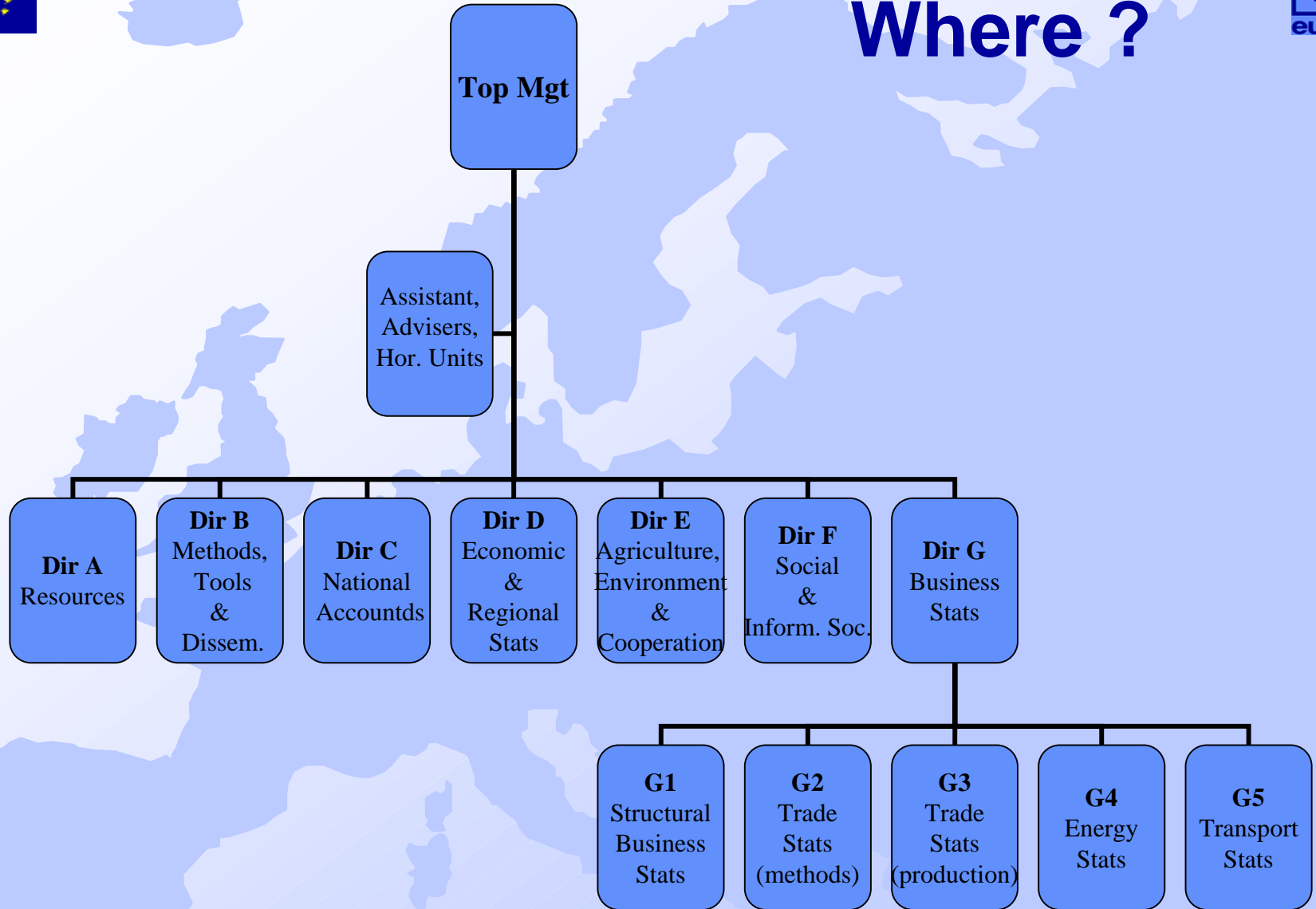
# Where ?

- The EUROPEAN COMMISSION**

|                                  |                       |
|----------------------------------|-----------------------|
| DG TREN « Transport and Energy » | Brussels & Luxembourg |
| DG ENV « Environment »           | Brussels              |
| DG REGIO « Regional Policies »   | Brussels              |
| ...                              |                       |
| DG ESTAT « Eurostat »            | Luxembourg            |
| ...                              |                       |



# Where ?





# Why ?



“Community transport statistics are required to support the **Community transport policy**, including the transport Trans-European Network (**TEN-T**). Transport is also an important part of Community **regional and environmental policies**. The White Paper "European transport policy for 2010: time to decide" sets out the Commission's action programme on transport. Community transport statistics should constitute a comprehensive transport information system, including data on **flows of passengers and goods**, as well as on **infrastructure, equipment, traffic, mobility, safety, and environmental impact**, as well as data on transport enterprises. A key objective will be to monitor the wished shift of the balance between modes of transport, and following the share of rail and short-sea shipping in comparison to road transport. It will be necessary to increase the coverage of statistics on **intermodal transport and passenger mobility** – in particular by car - and to provide better structural, modal split and environmental impact indicators covering passengers as well as freight and taking account of all **modes of transport**. The high level of cost of European transport infrastructure will increase needs for statistics on transport infrastructure. Community regional policy will increase demands for more spatially broken-down data on transport networks and flows. “



# For whom ?

- **Confirmed user DGs:**
  - DG TREN (Transport and Energy)
  - DG ENV (Environment)
  - DG REGIO (Regional Policies)
- **Possible user DGs:**
  - DG COMP (Competition)*
  - DG FISH (Fisheries and Maritime affairs)*
  - DG JLS (Justice, Freedom and Security)*
- **Community agencies: EEA, ERA...**
- **Member States <sup>(1)</sup>, International institutions**
- **Industry, the research community**
- **The media, the public opinion**



# What ? (in general)

## PROCESSES

|                           | Rail transport | Road transport | Inland waterways transport | (Oil) Pipelines transport | Maritime transport | Air transport |
|---------------------------|----------------|----------------|----------------------------|---------------------------|--------------------|---------------|
| Transport infrastructure  | V              | V              | V                          | V                         |                    |               |
| Transport equipment       | V              | V              | V                          | V                         |                    |               |
| Enterprises, & employment | V              | V              | V                          | V                         |                    |               |
| Traffic (of vehicles)     | L - V          | L - V          | Coming legal act           | -                         | L                  | L             |
| Transport measurement     | L - V          | L - V          | L                          | V                         | L                  | L             |
| Accidents                 | L              | L              |                            |                           |                    |               |

L: legal basis - V: voluntary basis



# What ? (in general)

- **Processes**

- Road freight (L)
- Road safety (L)
- Rail (L)
- IWW (L)
- Maritime (L)
- Aviation (L)
- Common Q (V)
- Regional (V)

- **Projects**

- Intermodal (V)
- Passengers' Mob. (V)
- Cost of infrastr. (V)
- Indicators (-)
  - Structural ind.
  - Modal Split ind.
  - TERM ind.





# What ? (Work Programme in 2006)

- Objective N°1

- Implementation of the Community « acquis »  
> data for year 2005 available by December 2006

- Objective N°2

- (preparation of) Legal procedures for the use of NST 2000 as new standard classification for goods, in all concerned modes - but inland waterways <sup>(1)</sup>, by January 2008

- Objective N°3

- Production of transport infrastructure, equipment, enterprises, safety indicators... through the use of the Common Questionnaire to be accessed via Internet



# What ? (Work Programme in 2006)

- Objective N°4

- Systematic updating and quality improvement of regional transport indicators based both on the annual survey and on the legal data collections

- Objective N°5

- Consolidation and further development of methodology and production for structural indicators, modal split indicators and TERM indicators

- Objective N°6

- Consolidation of the valorisation of non-harmonised statistical information on passengers' mobility
- *Further analysis of users' needs and methodological developments in view of producing high quality data on VKm and PKm in the future*



# What ? (Work Programme in 2006)

- Objective N°7

- Consolidation and further development of methodology and production for statistics on intermodal transport based essentially on legal data collections and on data provided by industry

- Objective N°8

- Dissemination: free Web site, +/-10 SiFs, new editions of the « Panorama of Transport » publication and of the « Energy, transport and environment » pocketbook



# What ? (Work Programme in 2006)

- Objective N°9

- Modernisation of the legal basis for inland waterways transport statistics

- Objective N°10

- (analysis of) Modernisation of the legal basis for maritime transport statistics

- Objective N°11

- Adaptation of implementation of existing legislation



# Next ESS meetings

## related to inland transport statistics

| Meeting  | Date           |
|--|----------------|
| Coordination Committee for Statistics on Transport     | 11-12 Dec 2006 |
| Working Group on Inland WaterWays Transport Statistics | Feb 2007       |
| Working Group on Road Freight Transport Statistics     | Apr 2007       |
| Working Group on Rail Transport Statistics             | Oct 2007       |



Thanks for your attention

**Any questions ?**