

DAIMLERCHRYSLER

Engine noise

EP/SNA, 2006-10-30
Dirk Volkenborn

Introduction

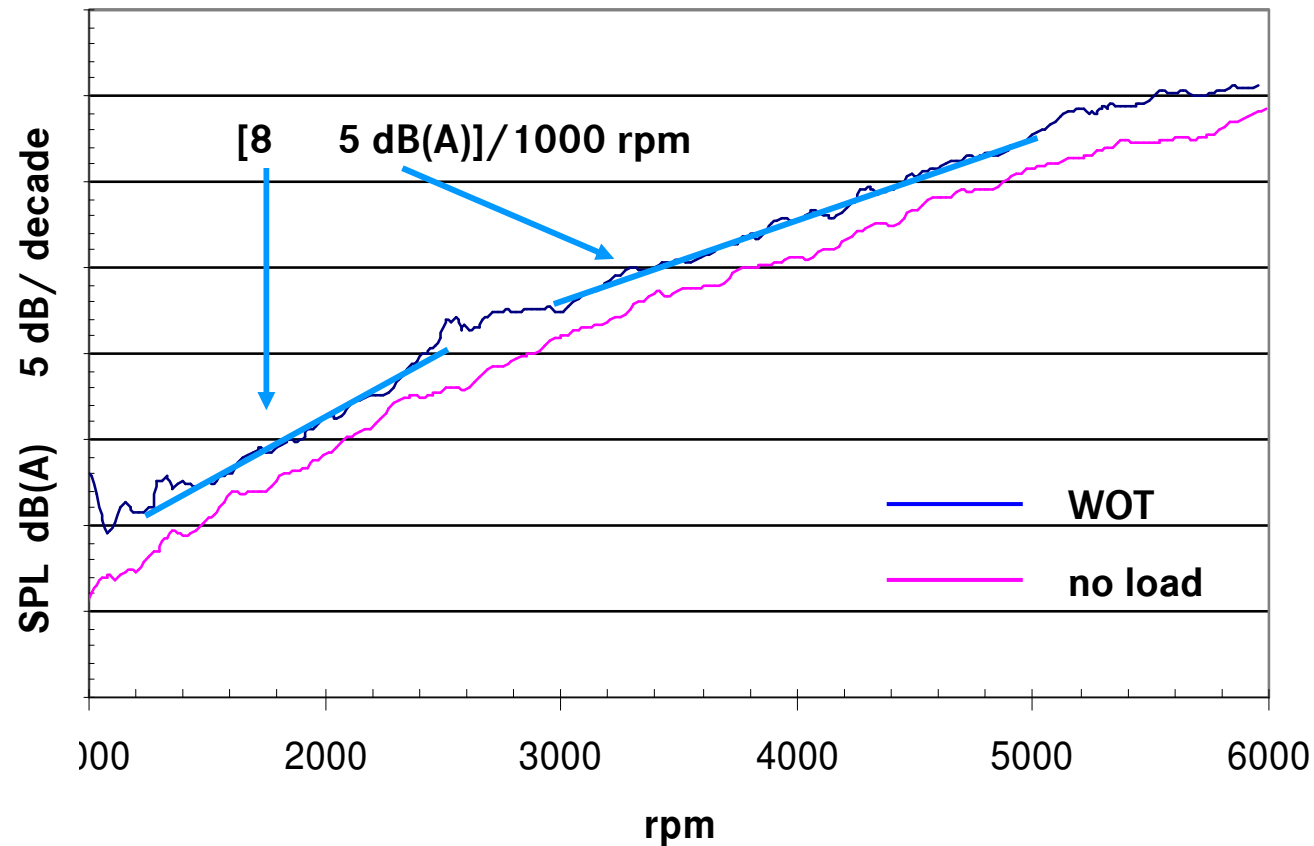


- Measurements are made in an non reflecting acoustic chamber [lowest frequency 100 Hz]
- Diagramms show different enginetypes made by different manufactures
- Diagramms show the SPL in 1 m distance averaged over five directions (left, right, up, down, front)
- The intake- and exhaustpipe noise is damped

4 cyl. gasoline



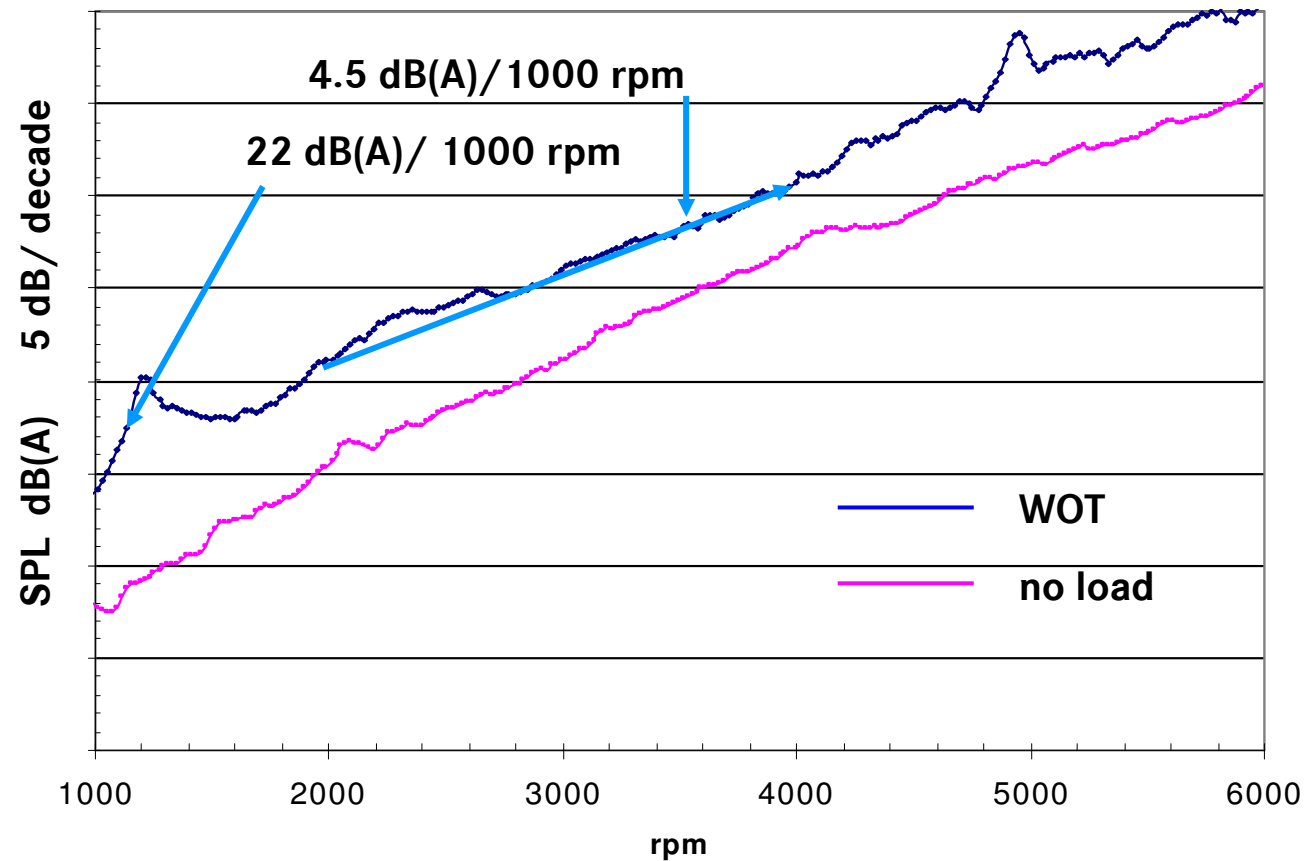
company A 4 cyl. ~ 80 KW



+/- 130 KW engine



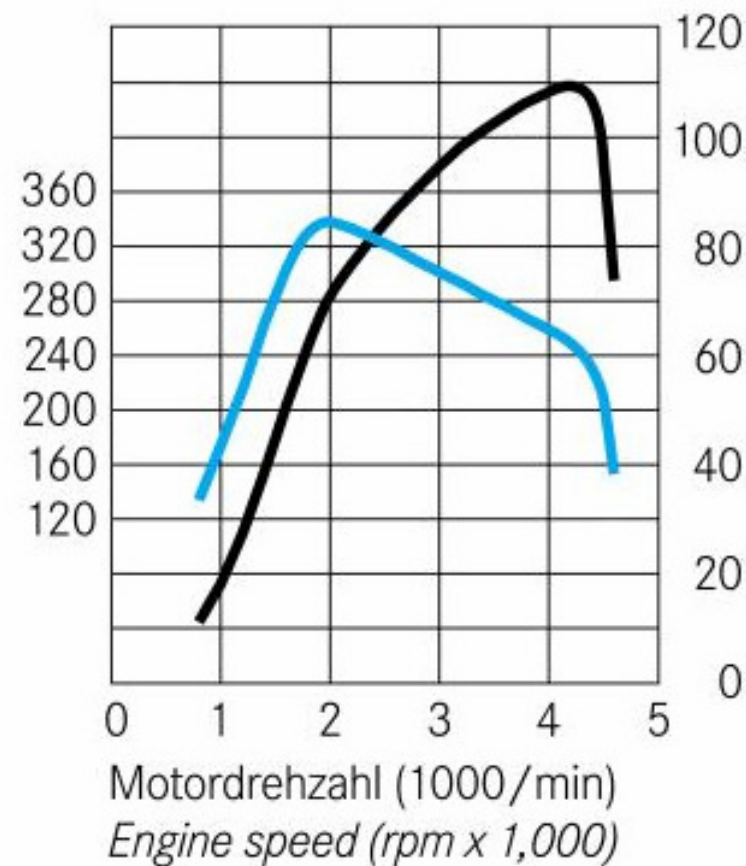
Company c engine no.3





Drehmoment
Torque
(Nm/Nm) —

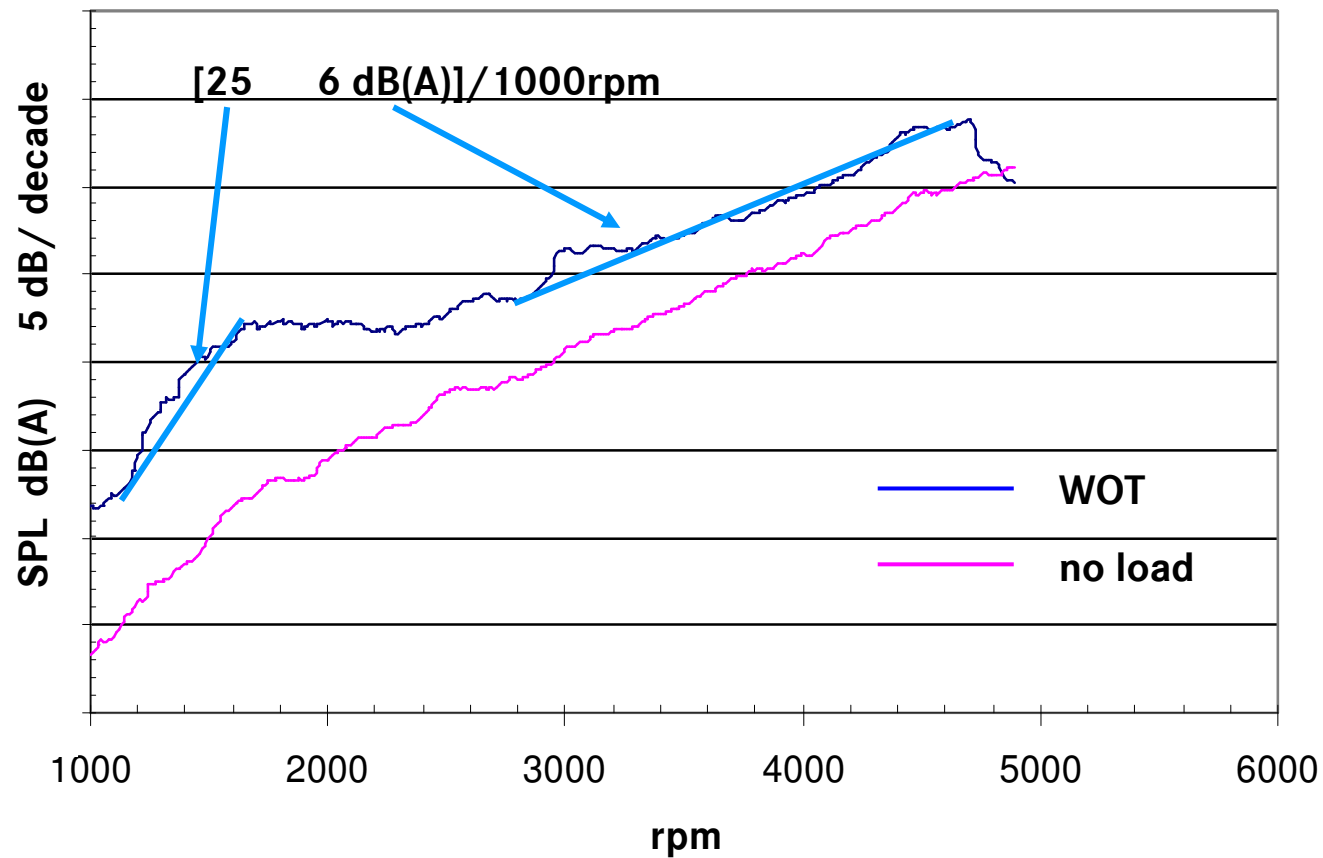
Leistung
Performance
(kW/kW) —



high powered diesel



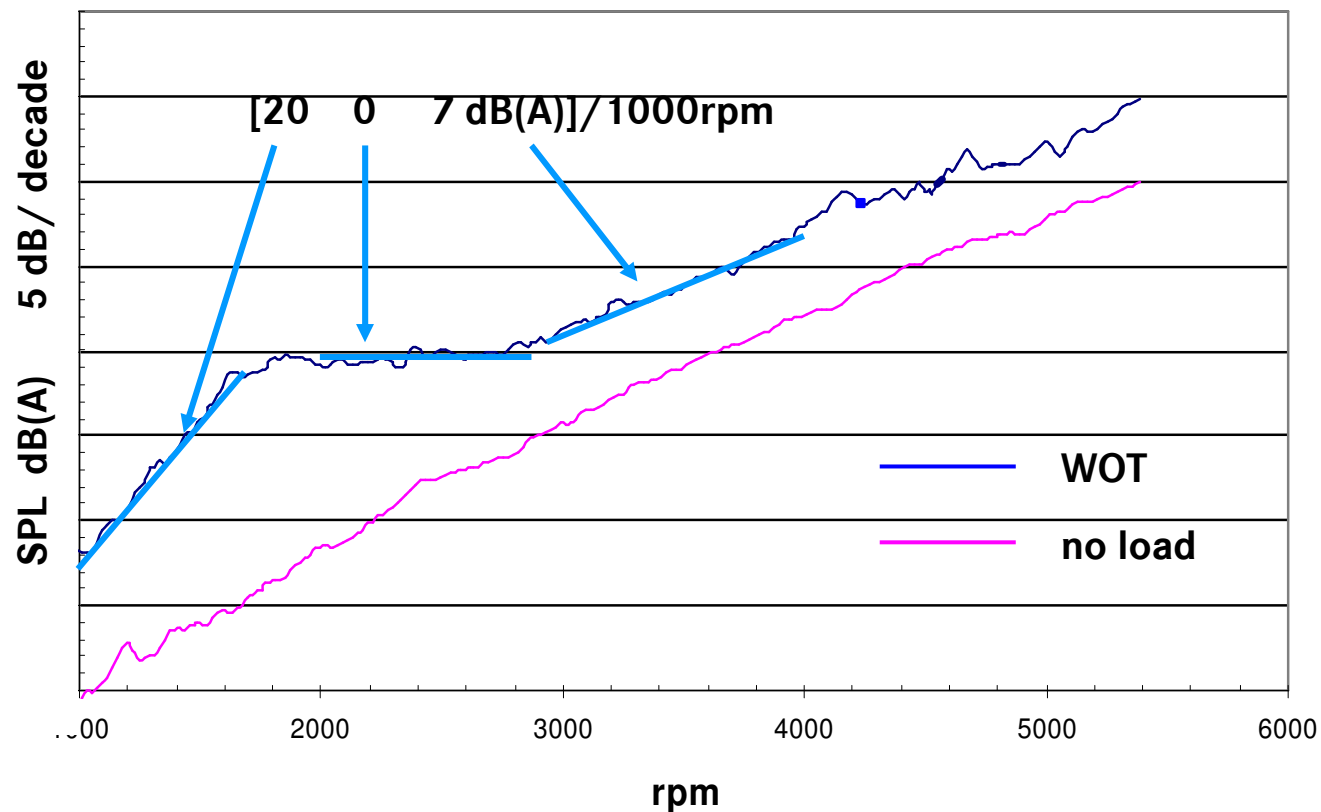
company A engine no.8



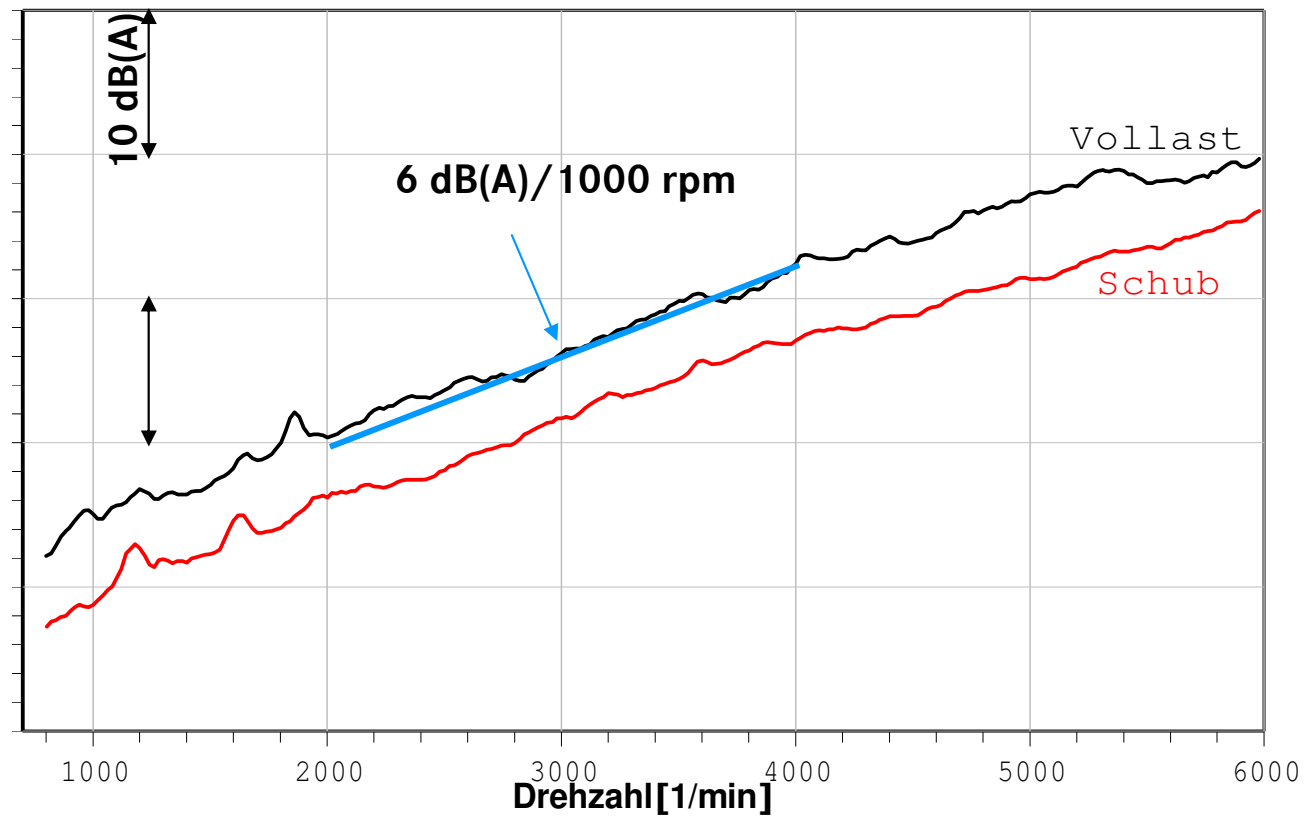
Turbo charged gasoline



turbo charged engine ~ 150 KW
company B engine 44



8 cylinder engine



conclusion



- for the whole rpm range an averaged slope of 5-6 dB(A) / 1000 rpm can be observed
- for smaller rpm areas the slope can be very different and can have a variety between 0 to 25 dB(A) / 1000 rpm

outlook for the whole vehicle

- depending on the source distribution of a vehicle [f(enginespeed, vehicle speed, load)] the increase of dB/rpm is different and is individuell for each vehicle