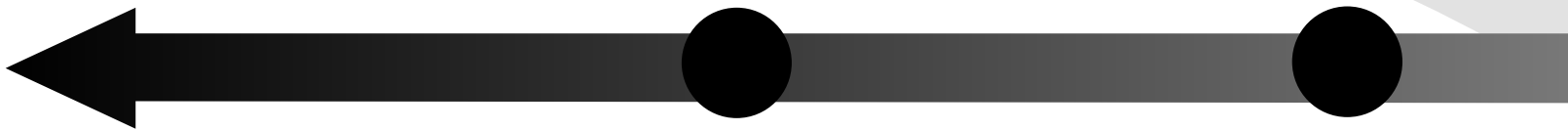
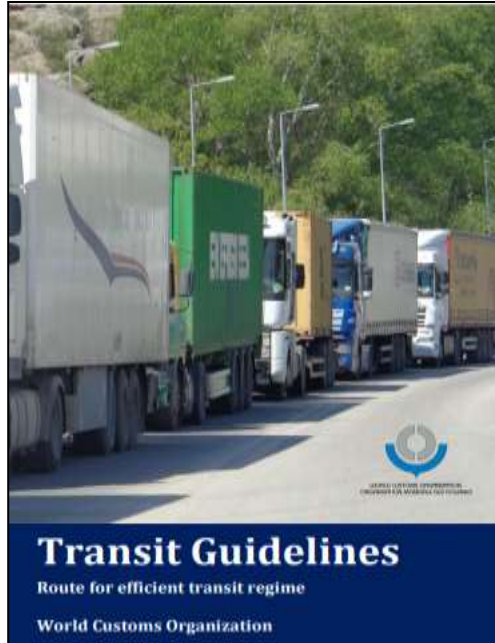


WCO's initiatives on Transit and eATA



UNECE GE.1, 27th session
Geneva, 4 December 2017

WCO Transit Guidelines



- Launched at the Global Transit Conference, 10-11 July 2017, WCO Headquarters in Brussels
 - Conference attended by over 200 delegates from more than 80 countries
- Supplement the Transit Handbook released by the WCO in 2014
- The Transit Guidelines contain 150 guiding principles
- Organized in 13 sections

- Available in four languages - English, French, Spanish and Russian at <http://www.wcoomd.org/en/topics/facilitation/instrument-and-tools/tools/transit-guidelines.aspx>

WCO Transit Guidelines

Through a number of regional workshops, more than 100 transit experts from Customs administrations and international and regional organisations (WTO, UNECE, IRU, UNCTAD, UN-OHRLLS, WB, JICA, ADB, AfDB) contributed to the development of the Guidelines



27 June to 1 July 2016,
Abidjan, Cote d'Ivoire



31 October to 4 November 2016,
Lusaka, Zambia



23 to 27 January 2017,
La Paz, Bolivia



24 to 27 April 2017,
Tbilisi, Georgia

Structure of the Transit Guidelines

- I. Introduction - including definitions
- II. Transit Guidelines - in 13 sections
- III. The List of Guidelines
- IV. International Legal Framework - GATT
Article V, TFA, RKC (Chapter 5 of the GA and SA E1),
TIR Convention (Body), Harmonisation Convention
(Body), Container Convention (Body), Vienna
Programme of Action for LLDCs

Scope of the Transit Guidelines



Exchange of information

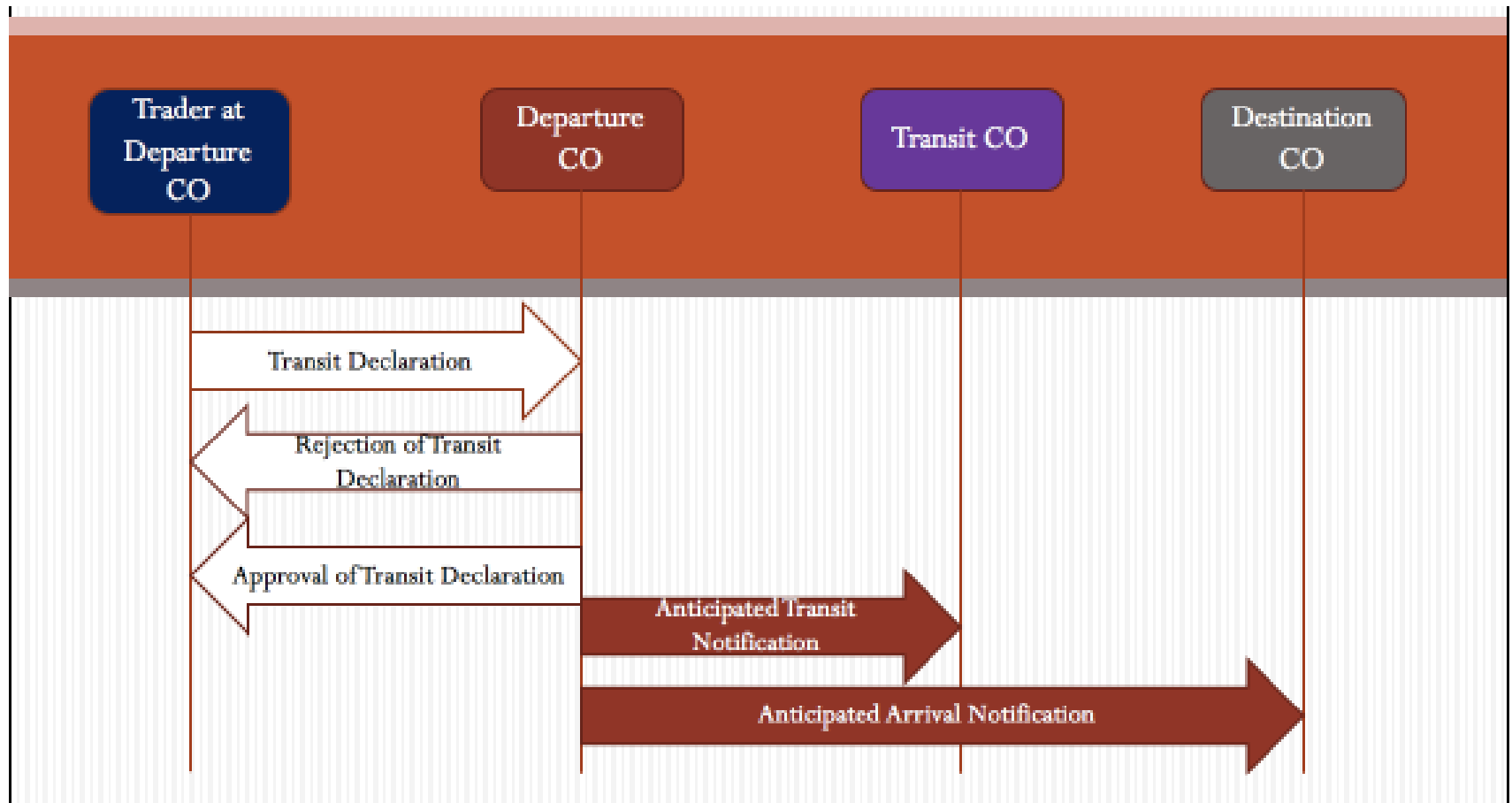
➤ Guideline 7

- should consider provisions for effective information exchange,
- provide for harmonization of information requirements in line with international standards (i.e. WCO Data Model).

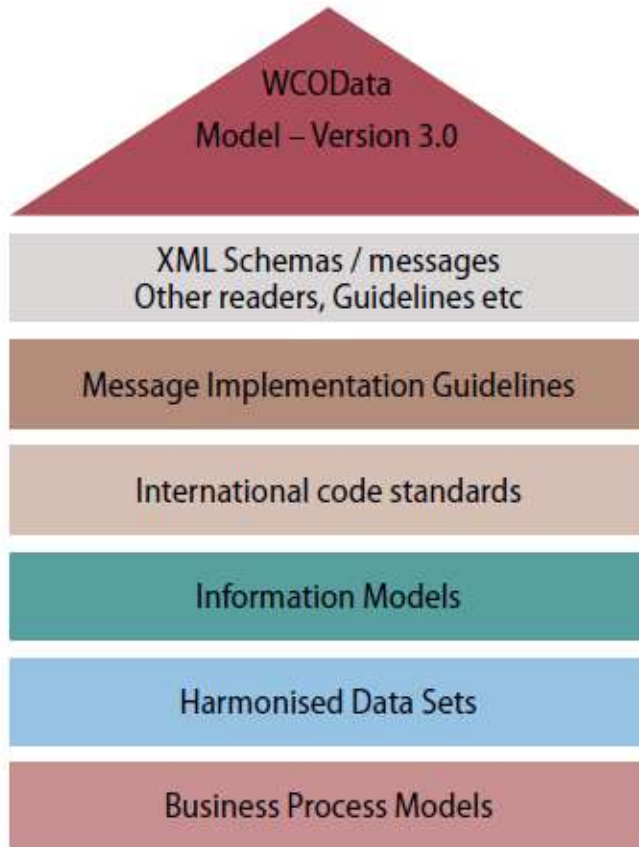
➤ Guideline 9

- an explicit request from the Customs office to obtain the information should not be required.

Exchange of information



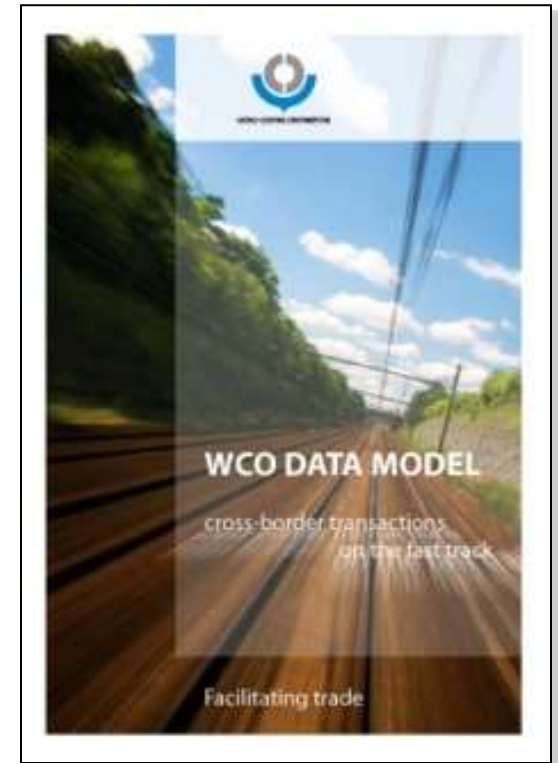
WCO Data Model



- The WCO Data model is a compilation of clearly structured, harmonized, standardized and reusable sets of **data definitions** and **electronic messages** to meet operational and legal requirements of cross-border regulatory agencies, including Customs, which are responsible for border management.

WCO Data Model Information Package

- Contains Information Package for Transit
 - Transit Declaration (B2G)
 - Response (G2B)
 - Intergovernmental exchange of information (G2G)



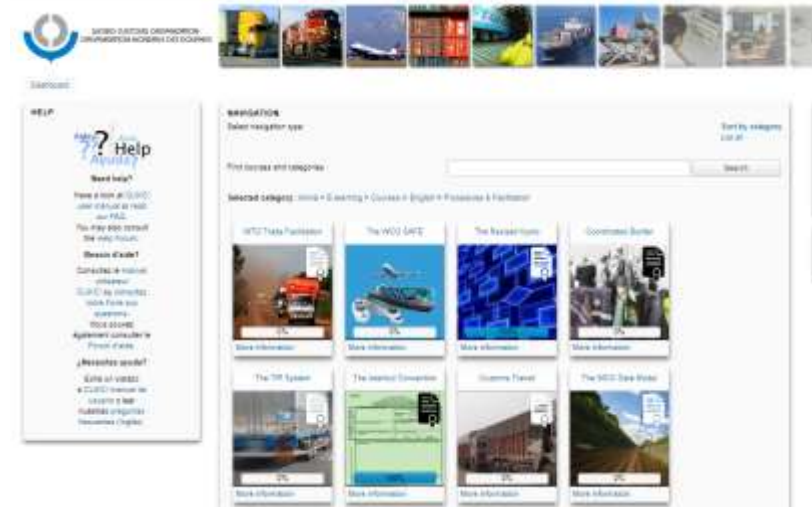
Recent project implementing the WCO Transit DM

Transit interconnectivity in West and Central Africa

- Develop common dataset for transit processes
- Exchange of information using XML message
- Based on the WCO Data Model
- Involved Togo, Ghana, Burkina Faso, Cote D'Ivoire, Mali, and Senegal
- Suitable for different technological platforms:
 - Some of the countries use ASYCUDA, others have developed their own Customs system
- Ready for re-use for transit interconnectivity in other regions / sub-regions

Capacity Building portfolio

- Transit Handbook and Transit Guidelines
- Pool of accredited experts from Member Customs administrations – Technical and Operational Advisors on Transit
- E-learning courses

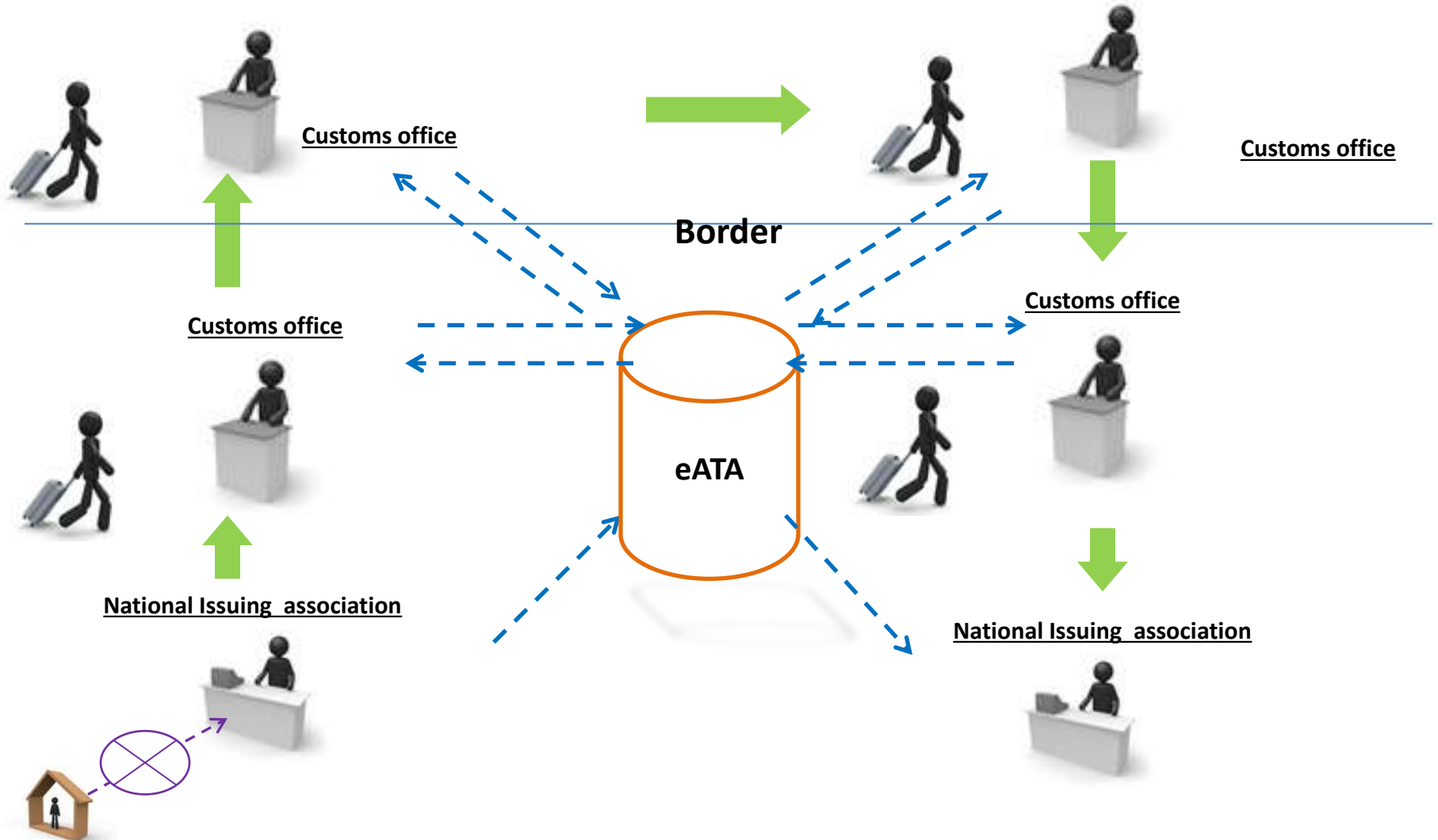


WCO future plans

- Regional workshops to promote the implementation of the Transit Guidelines
- Publication of best practices
- Second Global Conference on Transit in 2020



eATA Carnet Project



eATA Carnet Project

De-centralized system

Legal basis (amendment to Conventions)

Development of business cases – (GNC UB)

Pilot project

Centralized system

Legal basis (amendment to Conventions)

Development of business cases

Pilot project

Thank you for your kind attention!

Vyara Filipova
Technical Attaché
Compliance and Facilitation Directorate
Tel.: +32 2 209 9338
E-mail: Vyara.Filipova@wcoomd.org

Copyright © 2017 World Customs Organization. All rights reserved.
Requests and inquiries concerning translation, reproduction and
adaptation rights should be addressed to copyright@wcoomd.org