



**Economic and Social  
Council**

Distr.  
GENERAL

TRADE/WP.7/GE.11/2002/13/Add.3  
12 July 2002

ORIGINAL : ENGLISH

---

ECONOMIC COMMISSION FOR EUROPE

COMMITTEE FOR TRADE, INDUSTRY AND  
ENTERPRISE DEVELOPMENT

Working Party on Standardization of  
Perishable Produce and Quality Development

Specialized Section on Standardization of Meat  
11<sup>th</sup> session, 9 - 10 April 2002, Geneva

REPORT OF THE ELEVENTH SESSION

Addendum 3

**UNECE STANDARD FOR CHICKEN**

The Specialized Section decided that the text of the chicken production pages had advanced far enough to annex it to the report in order to have a translated version for the next meeting of rapporteurs. The product images are for technical reasons not included in this document. A version containing these photographs is available on the homepage of the Agricultural Standards Unit (see [www.unece.org/trade/agr](http://www.unece.org/trade/agr) following the menu STANDARDS and then MEAT).

## UNECE STANDARD FOR CHICKEN

### SECTION 7B

#### CHICKEN PRODUCT CARCASSES AND PARTS PRODUCT DESCRIPTIONS

#### Foreword

#### Purpose

#### Chicken Skeletal Diagram Explanation

<b>Product Description</b>	<b>Item No.</b>
Whole Bird	0101
Whole Bird w/out Giblets (W.O.G.)	0102
Boneless Whole Bird w/out Wings & Giblets	0103
W.O.G. w/ Long-Cut Drumsticks	0104
W.O.G. w/ Half Neck	0105
W.O.G. w/ Whole Neck	0106
W.O.G. w/ Head	0107
W.O.G. w/ Head & Feet	0108
2-Piece Cut-Up (Split Bird)	0201
4-Piece Cut-Up (Quartered Bird)	0202
6-Piece Cut-Up	0203
8-Piece Cut-Up, Traditional	0204
8-Piece Cut-Up, Non-Traditional	0205
9-Piece Cut-Up, Traditional	0206
9-Piece Cut-Up, Country-Cut	0207
10-Piece Cut-Up	0208
Front Half	0301
Front Half w/out Wings (Whole Breast with Back)	0302
Back Half	0401
Back Half w/out Tail	0402
Breast Quarter	0501
Split Breast w/Back Portion	0502
Whole Breast w/Ribs & Tenderloins	0601
Bone-in Whole Breast w/ Ribs and Wings	0602
Boneless Whole Breast w/ Rib Meat, w/out Tenderloins	0603
Boneless Whole Breast w/ Tenderloins	0604
Boneless Whole Breast w/out Tenderloins	0605
Bone-in Split Breast w/ Ribs	0701
Bone-in Split Breast w/ Ribs & Wing	0702
Boneless Split Breast w/out Rib Meat	0704

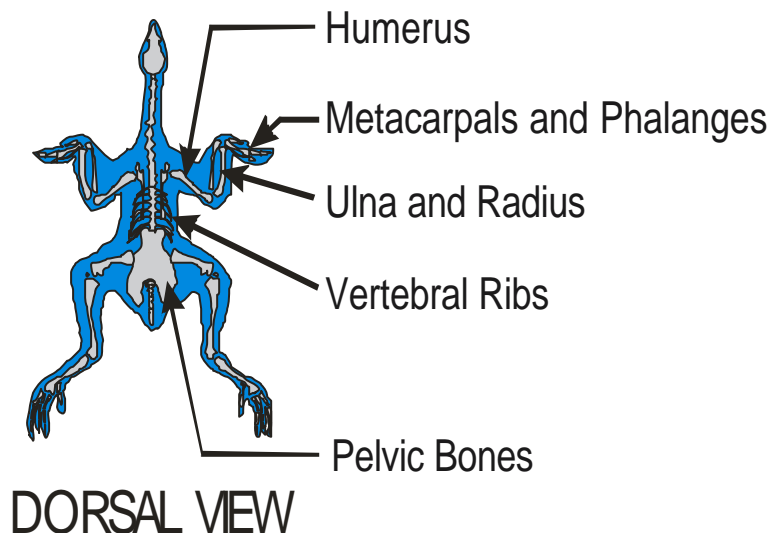
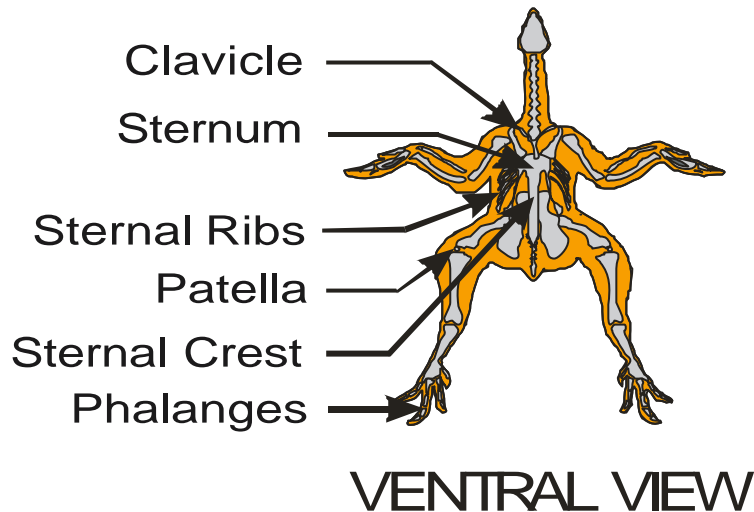
Partially Boneless Split Breast w/ Rib Meat & 1 <sup>st</sup> Wing Segment	0705
Inner Fillet (Tender, Small Fillet)	0801
Inner Filler w/Tendon Tip Off	0802
Leg w/ Back Portion (Leg Quarter)	0901
Leg w/ Back Portion w/out Tail (Leg Quarter w/out Tail)	0902
Leg w/ Back Portion w/out Tail or Abdominal Fat	0903
Long-Cut Drumstick & Thigh Portion w/Back	0904
Whole Leg (Short-Cut Leg)	1001
Whole Leg w/ Abdominal Fat	1002
Whole Leg, Long-Cut	1003
Whole Leg, w/ Thigh/Drumstick Incision (Short-Cut Sujiire)	1004
Whole Leg, Long-Cut, w/ Thigh/Drumstick Incision (Long-Cut Sujiire)	1005

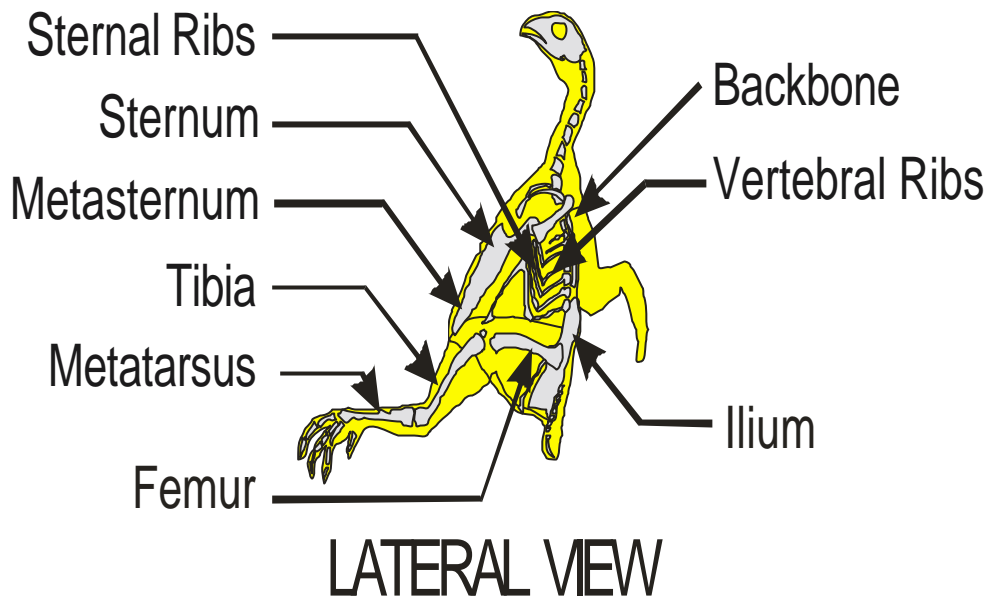
**CHICKEN PRODUCT CARCASSES AND PARTS PRODUCT DESCRIPTIONS**

Thigh	1101
Bone-in Thigh w/ Back Portion (Thigh Quarter)	1102
Boneless Thigh, Trimmed	1103
Boneless Thigh, Squared	1104
Boneless Thigh, Trimmed & Squared	1105
Drumstick	1201
Slant-Cut Drumstick	1202
Whole Wing	1301
1 <sup>st</sup> & 2 <sup>nd</sup> Segment Wing (V-Wing)	1302
2 <sup>nd</sup> & 3 <sup>rd</sup> Segment Wing (2-Joint Wing)	1303
1 <sup>st</sup> Segment Wing (Wing Drummette)	1304
2 <sup>nd</sup> Segment Wing (Wing Flat)	1305
3 <sup>rd</sup> Segment Wing (Wing Tip)	1306
1 <sup>st</sup> Segment & 2 <sup>nd</sup> Segment Wings	1307
Wings w/ Back Attached	1308
Stripped Lower Back	1401
Lower Back	1402
Upper Back	1403
Whole Back	1404
Tail	1501
Neck	1601
Head	1701
Processed Paws	1801
Processed Feet	1802
Unprocessed Paws	1803
Unprocessed Feet	1804
Gizzards, Mechanically Cut	1901
Gizzards, Butterfly-Cut	1902
Gizzards, V-Style Cut	1903
Livers	2001
Hearts, Cap Off	2101
Hearts, Cap On	2102
Testes (Fries, Testicles)	2201
Breast Skin	2301
Thigh/Leg Skin	2302
Body Skin	2303
Abdominal Fat (Leaf Fat)	2401
2-Product Combinations	4001
3-Product Combinations	4002
4-Product Combinations	4003

## CHICKEN SKELETAL DIAGRAM EXPLANATION

Two of the three skeletal diagrams of a whole chicken shown below are used to illustrate the composition of each poultry product. These three diagrams show the major bones of the chicken in dorsal or back view (in blue), ventral or breast view (in orange), and lateral or side view (in yellow). The shaded areas of views for the particular product represents the portion and muscles of the chicken included in that product.





## **CHICKEN – WHOLE BIRD**

A “whole bird” consists of an intact carcass with all parts, including the breast, thighs, drumsticks, wings, back, and abdominal fat. The head and feet are removed, and the oil gland and tail may or may not be present. The gizzard, heart, liver, and neck with or without skin (giblet pack) are included as separate parts.

**70101-11 Bone-in, Skin-on, Color not specified**

**70101-12 Bone-in, Skinless**

**70101-21 Boneless, Skin-On, Color not specified**

**70101-22 Boneless, Skinless**

## **CHICKEN – WHOLE BIRD WITHOUT GIBLETS (W.O.G.)**

A “whole bird without giblets” consists of an intact carcass with all parts, including the breast, thighs, drumsticks, wings, back, and abdominal fat. The head and feet are removed, and the oil gland and tail may or may not be present.

**70102-11 Bone-in, Skin-on, Color not specified**

**70102-12 Bone-in, Skinless**

**70102-21 Boneless, Skin-On, Color not specified**

**70102-22 Boneless, Skinless**

## **CHICKEN – BONELESS WHOLE BIRD WITHOUT GIBLETS (W.O.G.) OR WINGS**

A “boneless whole bird without giblets or wings” consists of an intact carcass with the breast, thigh, and drumstick meat. The head, wings, feet, and oil gland and tail are removed.

**70103-21 Boneless, Skin-On, Color not specified**

**70103-22 Boneless, Skinless**

## **CHICKEN – WHOLE BIRD WITHOUT GIBLETS (W.O.G.), WITH LONG-CUT DRUMSTICKS (SHANK)**

A “whole bird without giblets, with long-cut drumstick” consists of an intact carcass with all parts, including the breast, thighs, drumsticks, wings, back, and abdominal fat. The head and paws are removed, and the tail may or may not be present.

**70104-11 Bone-in, Skin-on, Color not specified**

**70104-12 Bone-in, Skinless**

**70104-21 Boneless, Skin-On, Color not specified**

**70104-22 Boneless, Skinless**

### **CHICKEN – WHOLE BIRD WITHOUT GIBLETS (W.O.G.) WITH HALF NECK**

A “whole bird without giblets with half neck” consists of an intact carcass with one-half of the neck attached with all parts, including the breast, thighs, drumsticks, wings, back, and abdominal fat. The head, one-half of the neck, and the feet are removed, and the oil gland and tail may or may not be present.

**70105-11 Bone-in, Skin-on, Color not specified**

### **CHICKEN – WHOLE BIRD WITHOUT GIBLETS (W.O.G.) WITH WHOLE NECK**

A “whole bird without giblets with whole neck” consists of an intact carcass with the neck attached with all parts, including the breast, thighs, drumsticks, wings, back, and abdominal fat. The head and feet are removed, and the oil gland and tail may or may not be present.

**70106-11 Bone-in, Skin-on, Color not specified**

### **CHICKEN – WHOLE BIRD WITHOUT GIBLETS (W.O.G.) WITH HEAD**

A “whole bird without giblets with head” consists of an intact carcass with the head attached with all parts, including the breast, thighs, drumsticks, wings, back, and abdominal fat. The feet are removed and the oil gland and tail may or may not be present.

**70107-11 Bone-in, Skin-on, Color not specified**

### **CHICKEN – WHOLE BIRD WITHOUT GIBLETS (W.O.G.) WITH HEAD AND FEET**

A “whole bird without giblets with head and feet” consists of an intact carcass with the head and feet attached. All parts, including the breast, thighs, drumsticks, wings, back, and abdominal fat are also attached. The oil gland and tail may or may not be present.

**70108-11 Bone-in, Skin-on, Color not specified**

### **CHICKEN – TWO-PIECE CUT-UP (SPLIT BIRD)**

A “2-piece cut-up chicken” is produced by splitting a whole bird without giblets (70102) end to end through the back and breast to produce approximately equal left and right carcass halves. The oil gland, tail, and abdominal fat may or may not be present. Individual parts may or may not come from the same bird.

**70201-11 Bone-in, Skin-on, Color not specified**



## **CHICKEN – FOUR-PIECE CUT-UP (QUARTERED BIRD)**

A “4-piece cut-up chicken” is produced by cutting a whole bird without giblets (70102) into 2 breast quarters with wings attached and 2 leg quarters. The oil gland, tail, and abdominal fat may or may not be present. Individual parts may or may not come from the same bird.

**70202-11 Bone-in, Skin-on, Color not specified**

## **CHICKEN – SIX-PIECE CUT-UP**

A “6-piece cut-up chicken” is produced by cutting a whole bird without giblets (70102) into 2 split breasts with back and rib portions, 2 drumsticks, 2 thighs with back portion. The wings are removed. The oil gland, tail, and abdominal fat may or may not be present. Individual parts may or may not come from the same bird.

**70203-11 Bone-in, Skin-on, Color not specified**

## **CHICKEN – EIGHT-PIECE CUT-UP, TRADITIONAL**

A “8-piece traditional cut-up chicken” is produced by cutting a whole bird without giblets (70102) into 2 split breasts with back and rib portions, 2 drumsticks, 2 thighs with back portion, and 2 wings. The oil gland, tail, and abdominal fat may or may not be present. Individual parts may or may not come from the same bird.

**70204-11 Bone-in, Skin-on, Color not specified**

## **CHICKEN – EIGHT-PIECE CUT-UP, NON-TRADITIONAL**

A “8-piece non-traditional cut-up chicken” is produced by cutting a whole bird without giblets (70102) into eight pieces specified by the buyer or seller. The old gland, tail, and abdominal fat may or may not be present. Individual parts may or may not come from the same bird.

**70205-11 Bone-in, Skin-on, Color not specified**

## **CHICKEN – NINE-PIECE CUT-UP, TRADITIONAL**

A “9-piece traditional cut-up chicken” is produced by cutting a whole bird without giblets (70102) into 1 breast portion containing the clavicle, 2 split breasts with back and rib portions, 2 drumsticks, 2 thighs with back portion, and 2 wings. The oil gland, tail, and abdominal fat may or may not be present. Individual parts may or may not come from the same bird.

**70206-11 Bone-in, Skin-on, Color not specified**

## **CHICKEN – NINE-PIECE CUT-UP, COUNTRY-CUT**

A “9-piece country-cut cut-up chicken” is produced by cutting a whole bird without giblets (70102) into 1 lower breast portion, 2 upper split breasts portions (with back and rib portions), 2 drumsticks, 2 thighs with back portion, and 2 wings. The oil gland, tail, and abdominal fat may or may not be present. Individual parts may or may not come from the same bird.

**70207-11 Bone-in, Skin-on, Color not specified**

## **CHICKEN – TEN-PIECE CUT-UP**

A “10-piece cut-up chicken” is produced by cutting a whole bird without giblets (70102) into 4 equal breast portions with back and ribs, 2 thighs with back portion, 2 drumsticks, and 2 wings. The oil gland, tail, and abdominal fat may or may not be present. Individual parts may or may not come from the same bird.

**70208-11 Bone-in, Skin-on, Color not specified**

## **CHICKEN – FRONT HALF**

A “front half” is produced by cutting a whole bird without giblets (70102) perpendicular to the backbone at the ilium just above the femur and downward to the tip of the metasternum. The front half consists of a full breast with the adjacent back portion and both wings attached.

**70301-11 Bone-in, Skin-on, Color not specified**

## **CHICKEN – FRONT HALF WITHOUT WINGS (WHOLE BREAST WITH BACK)**

A “front half without wings” is produced by cutting a whole bird without giblets (70102) perpendicular to the backbone at the ilium just above the femur and downward to the tip of the metasternum, and removing the wings. The front half without wings consists of a full breast with the adjacent back portion.

**70302-11 Bone-in, Skin-on, Color not specified**

## **CHICKEN – BACK HALF (SADDLE)**

A “back half” is produced by cutting a whole bird without giblets (70102) perpendicular to the backbone at the ilium just above the femur and downward to the tip of the metasternum. The back half consists of both legs with the adjoining portion of the back, adjacent abdominal fat, and tail. The oil gland may or may not be removed.

**70401-11 Bone-in, Skin-on, Color not specified**

## **CHICKEN – BACK HALF WITHOUT TAIL (SADDLE)**

A “back half without tail” is produced by cutting a whole bird without giblets (70102) perpendicular to the backbone at the ilium just above the femur and downward to the tip of the metasternum. The back half without tail consists of both legs with the adjoining portion of the back and adjacent abdominal fat.

**70402-11 Bone-in, Skin-on, Color not specified**

## **CHICKEN – BREAST QUARTER**

A “breast quarter” is produced by cutting a front half (70301) along the sternum and back into two approximately equal portions. The breast quarter consists of half of a breast with the attached wing and a portion of the back.

**70501-11 Bone-in, Skin-on, Color not specified**

## **CHICKEN – SPLIT BREAST WITH BACK PORTION**

A “split breast with back portion” is produced by cutting a front half without wings (70302) along the sternum and back into two approximately equal portions. The split breast with back portion consists of half of a breast with a portion of the back attached.

**70502-11 Bone-in, Skin-on, Color not specified**

## **CHICKEN – WHOLE BREAST WITH RIBS AND TENDERLOINS**

A “whole breast with ribs and tenderloins” is produced from a front half without wings (70302) by separating the entire breast from the back by cutting along the junction of the vertebral and sternal ribs. The neck skin and back are removed. The whole breast with ribs and tenderloins consists of the entire breast with rib meat and tenderloins.

**70601-11 Bone-in, Skin-on, Color not specified**

**70601-12 Bone-in, Skinless**

**70601-21 Boneless, Skin-on, Color not specified**

**70601-22 Boneless, Skinless**

## **CHICKEN – BONE-IN WHOLE BREAST WITH RIBS AND WINGS**

A “bone-in whole breast with ribs and wings” is produced from a front half (70301) by separating the entire breast from the back by cutting along the junction of the vertebral and sternal ribs. The neck skin and back are removed. The whole breast with ribs and wings consists of the entire breast with ribs, tenderloins, and wings.

**70602-11 Bone-in, Skin-on, Color not specified**

## **CHICKEN – BONELESS WHOLE BREAST WITH RIB MEAT, WITHOUT TENDERLOINS**

A “boneless whole breast with rib meat, without tenderloins” is produced from a front half without wings (70302) by separating the entire breast from the back by cutting along the junction of the vertebral and sternal ribs. The back, tenderloins, neck skin, and bones are removed. The boneless whole breast with rib meat, without tenderloins consists of an entire boneless breast with rib meat.

**70603-21 Boneless, Skin-on, Color not specified**

**70603-22 Boneless, Skinless**

## **CHICKEN – BONELESS WHOLE BREAST WITH TENDERLOINS**

A “boneless whole breast with tenderloins” is produced from a front half without wings (70302) by separating the entire breast from the back by cutting along the junction of the vertebral and sternal ribs. The back, rib meat, neck skin, and bones are removed. The boneless whole breast with tenderloins consists of an entire boneless breast with tenderloins.

**70604-21 Boneless, Skin-on, Color not specified**

**70604-22 Boneless, Skinless**

## **CHICKEN – BONELESS WHOLE BREAST WITHOUT TENDERLOINS**

A "boneless whole breast without tenderloins" is produced from a front half without wings (70302) by separating the entire breast from the back by cutting along the junction of the vertebral and sternal ribs. The back, rib meat, tenderloins, neck skin, and bones are removed. The boneless whole breast without tenderloins consists of an entire boneless breast without the tenderloins.

**70605-21 Boneless, Skin-on, Color not specified**

**70605-22 Boneless, Skinless**

## **CHICKEN – BONE-IN SPLIT BREAST WITH RIBS**

A "bone-in split breast with ribs" is produced by cutting a bone-in whole breast with ribs and tenderloins (70601) into two approximately equal portions along the center of the sternum. A bone-in split breast with ribs consists of one-half of a whole breast with the attached rib meat, tenderloin, and bones.

**70701-11 Bone-in, Skin-on, Color not specified**

**70701-12 Bone-in, Skinless**

## **CHICKEN – BONE-IN SPLIT BREAST WITH RIBS AND WING**

A "bone-in split breast with ribs and wing" is produced by cutting a bone-in whole breast with ribs and wings (70602) into two approximately equal portions along the center of the sternum. A split breast with ribs and wing consists of one-half of a whole breast with the attached rib meat, wing, tenderloin, and bones.

**70702-11 Bone-in, Skin-on, Color not specified**

## **CHICKEN – BONELESS SPLIT BREAST WITHOUT RIB MEAT**

A "boneless split breast without rib meat" is produced by cutting a bone-in whole breast with ribs and tenderloins (70601) into two approximately equal portions along the center of the sternum. The rib meat and bones are removed. A boneless split breast without rib meat consists of one-half of a whole breast. The tenderloin may or may not be present.

**70704-21 Boneless, Skin-on, Color not specified**

**70704-22 Boneless, Skinless**

## **CHICKEN – PARTIALLY BONELESS SPLIT BREAST WITH RIB MEAT AND FIRST WING SEGMENT (AIRLINE BREAST OR FRENCH CUT)**

"partially boneless split breast with rib meat and first segment wing" is produced cutting a bone-in whole breast with ribs and wings (70602) into two approximately equal portions along the center of the sternum, and removing the second and third wing segments and the breast bones. A partially boneless split breast with rib meat and first segment wing consists of one-half of a whole breast with rib meat and the first segment of the wing (with humerus bone). The tenderloin may or may not be present.

**70705-31 Partially Boneless, Skin-on, Color not specified**

**CHICKEN – INNER FILLET (TENDER, SMALL FILLET)**

An “inner fillet” is produced by separating the inner pectoral muscle from the breast and the sternum. The inner fillet consists of a single intact muscle with the embedded tendon.

**70801-22 Boneless, Skinless**

**CHICKEN – INNER FILLET WITH TENDON TIP OFF  
(TENDER WITH TENDER TIP OFF, SMALL FILLET WITH TENDER TIP  
OFF)**

An “inner fillet with tendon tip off” is produced by separating the inner pectoral muscle from the breast and the sternum. The protruding portion of the tendon is removed. The inner fillet with tendon tip off consists of a single intact muscle.

**70802-22 Boneless, Skinless**

**CHICKEN – LEG WITH BACK PORTION (LEG QUARTER)**

A “leg with back portion” is produced by cutting a back half (70401) along the center of the backbone into two approximately equal parts. The leg with back portion consists of an intact part that includes the drumstick, thigh with adjoining portion of the back, abdominal fat, and tail.

**70901-11 Bone-in, Skin-on, Color not specified**

**CHICKEN – LEG WITH BACK PORTION, WITHOUT TAIL (LEG QUARTER  
WITHOUT TAIL)**

A “leg with back portion, without tail” is produced by cutting a back half without tail (70402) along the center of the backbone into two approximately equal parts. The leg with back portion, without tail consists of an intact part that includes the drumstick, thigh with adjoining portion of the back, and abdominal fat.

**70902-11 Bone-in, Skin-on, Color not specified**

**CHICKEN – LEG WITH BACK PORTION, WITHOUT TAIL OF ABDOMINAL  
FAT  
(LEG QUARTER WITHOUT TAIL OR ABDOMINAL FAT)**

A “leg quarter without tail or abdominal fat” is produced by cutting a back half without tail (70402) along the center of the backbone into two approximately equal parts and removing the abdominal fat. The leg quarter without tail or abdominal fat consists of an intact part that includes the drumstick and thigh with adjoining portion of the back.

**70903-11 Bone -in, Skin-on, Color not specified**

## **CHICKEN – LONG-CUT DRUMSTICK AND THIGH PORTION WITH BACK (LONG-CUT DRUM AND THIGH PORTION)**

A “long-cut drumstick and thigh portion with back” is produced by cutting a leg quarter without tail (70902) through the thigh nearly parallel with the plane of the backbone just above the condyle. The long-cut drumstick and thigh portion with back consists of two parts: a drumstick with a portion of the thigh attached and the remaining thigh with the back portion and abdominal fat attached.

**70904-11 Bone-in, Skin-on, Color not specified**

## **CHICKEN – WHOLE LEG (SHORT-CUT LEG)**

A “whole leg” is produced by separating a leg from a back half (70401) between the junction of the femur and pelvic bone. The abdominal fat and back are removed. Skin may or may not be trimmed. The whole leg consists of the thigh and drumstick.

**71001-11 Bone-in, Skin-on, Color not specified**

**71001-12 Bone-in, Skinless**

**71001-21 Boneless, Skin-on, Color not specified**

**71001-22 Boneless, Skinless**

## **CHICKEN – WHOLE LEG WITH ABDOMINAL FAT (HALF SADDLE WITHOUT BACK)**

A “whole leg with abdominal fat” is produced by separating a leg from a back half (70401) between the junction of the femur and pelvic bone and removing the back. The whole leg with abdominal fat consists of the drumstick and thigh with associated skin and abdominal fat.

**71002-11 Bone-in, Skin-on, Color not specified**

## **CHICKEN – WHOLE LEG, LONG-CUT (LONG-CUT LEG)**

A “whole long-cut leg” is produced by cutting a whole bird without giblets, with long-cut drumsticks (70104) perpendicular to the backbone at the ilium just above the femur and downward to the tip of the metasternum, and then separating a leg between the junction of the femur and pelvic bone. The back and a portion of the foot just below the spur are removed. The long-cut leg consists of thigh, drumstick, and a portion of the shank.

**71003-11 Bone-in, Skin-on, Color not specified**

**71003-12 Bone-in, Skinless**

## **CHICKEN – WHOLE LEG, WITH THIGH/DRUMSTICK INCISION (SHORT-CUT SUJIIRE)**

A “whole leg with thigh/drumstick incision” is produced by separating a leg from a back half (70401) between the junction of the femur and pelvic bone and removing the back. The skin is trimmed. An incision is made through the muscle along the thigh and drumstick bones. The whole leg with thigh/drumstick incision consists of the thigh and drumstick.

**71004-11 Bone-in, Skin-on, Color not specified**

**71004-12 Bone-in, Skinless**

## **CHICKEN – WHOLE LEG, LONG-CUT WITH THIGH/DRUMSTICK INCISION (LONG-CUT SUJIIRE)**

A “whole long-cut leg with thigh/drumstick incision” is produced by separating a leg from a back half (70401) between the junction of the femur and pelvic bone. The back and a portion of the foot just below the spur are removed and an incision is made through the muscle along the thigh and drumstick bones. The long-cut leg with thigh/drumstick incision consists of thigh, drumstick, and a portion of the shank.

**71005-11 Bone-in, Skin-on, Color not specified**

**71005-12 Bone-in, Skinless**

## **CHICKEN – THIGH**

A “thigh” is produced by cutting a whole leg (71001) at the joint between the tibia and the femur. The drumstick and patella are removed. The thigh consists of the thigh and associated fat. Meat adjacent to the ilium (oyster meat) may or may not be present.

**71101-11 Bone-in, Skin-on, Color not specified**

**71101-12 Bone-in, Skinless**

**71101-21 Boneless, Skin-on, Color not specified**

**71101-22 Boneless, Skinless**

## **CHICKEN – BONE-IN THIGH WITH BACK PORTION (THIGH QUARTER)**

A “thigh with back portion” is produced by cutting a leg quarter (70901) at the joint between the tibia and the femur. The drumstick, patella, and abdominal fat are removed. The thigh with back portion consists of the thigh, attached back portion, and associated fat. The oil gland, tail, and meat adjacent to the ilium (oyster meat) may or may not be present.

**71102-11 Bone-in, Skin-on, Color not specified**

**71102-12 Bone-in, Skinless**

### **CHICKEN – BONELESS THIGH, TRIMMED**

A “boneless trimmed thigh” is produced by cutting a whole leg (71001) at the joint between the tibia and the femur. The drumstick, patella, femur bone, and nearly all visible fat are removed. The boneless trimmed thigh consists of the thigh meat. The meat adjacent to the ilium (oyster meat) may or may not be present.

**71103-21 Boneless, Skin-on, Color not specified**

**71103-22 Boneless, Skinless**

### **CHICKEN – BONELESS THIGH, SQUARED**

A “boneless squared thigh” is produced by cutting a whole leg (71001) at the joint between the tibia and the femur. The drumstick, patella, femur bone, and meat adjacent to the ilium (oyster meat) are removed. The boneless squared thigh consists of the thigh meat cut to a squared appearance.

**71104-21 Boneless, Skin-on, Color not specified**

**71104-22 Boneless, Skinless**

### **CHICKEN – BONELESS THIGH, TRIMMED AND SQUARED**

A “boneless trimmed and squared thigh” is produced by cutting a whole leg (71001) at the joint between the tibia and the femur. The drumstick, patella, femur bone, nearly all visible fat, and the meat adjacent to the ilium (oyster meat) are removed. The boneless trimmed and squared thigh consists of the thigh meat cut to a squared appearance.

**71105-21 Boneless, Skin-on, Color not specified**

**71105-22 Boneless, Skinless**

### **CHICKEN – DRUMSTICK (DRUM)**

A “drumstick” is produced by cutting a whole leg (71001) through the joint between the tibia and femur. The thigh is removed. The drumstick consists of the tibia, fibula, patella and associated muscles.

**71201-11 Bone-in, Skin-on, Color not specified**

**71201-12 Bone-in, Skinless**

**71201-21 Boneless, Skin-on, Color not specified**

**71201-22 Boneless, Skinless**

### **CHICKEN – SLANT-CUT DRUMSTICK (DRUM PORTION)**

A “slant-cut drumstick” is produced by cutting a whole leg (71001) along the tibia of the drumstick and through the joint between the tibia and femur. The thigh and a portion of the meat on one side of the drumstick are removed. The slant-cut drumstick consists of a portion of the tibia, fibula, patella and associated muscles..

**71202-11 Bone-in, Skin-on, Color not specified**



## **CHICKEN – WING, WHOLE**

A “whole wing” is produced by cutting the wing from a whole bird without giblets (70102) at the joint between the humerus and the backbone. The wing consists of: the first segment (drummette) containing the humerus that attaches the wing to the body, second segment (flat) containing the ulna and radius, and the third segment (tip) containing the metacarpals and phalanges.

**71301-11 Bone-in, Skin-on, Color not specified**

## **CHICKEN – FIRST AND SECOND SEGMENT WING (V-WING)**

A “first and second segment wing” is produced by cutting a whole wing (71301) between the second and third wing segment. The third segment (tip) is removed. The first and second segment wing consists of: the segment containing the humerus that attaches the wing to the body (drummette), and the segment containing the ulna and radius (flat).

**71302-11 Bone-in, Skin-on, Color not specified**

## **CHICKEN – SECOND AND THIRD SEGMENT WING (2-JOINT WING, WING PORTION)**

A “second and third segment wing” is produced by cutting a whole wing (71301) between the first and second wing segment. The first segment (drummette) is removed. The second and third segment wing consists of: the segment containing the ulna and radius (flat), and the segment containing the metacarpals and phalanges (tip).

**71303-11 Bone-in, Skin- on, Color not specified**

## **CHICKEN – FIRST SEGMENT WING (WING DRUMMETTE)**

A “first segment wing” is produced by cutting a whole wing (71301) between the first and second segments. The second and third segments (flat and tip) are removed. The first segment wing consists of the first segment containing the humerus that attaches the wing to the body.

**71304-11 Bone-in, Skin-on, Color not specified**

## **CHICKEN – SECOND SEGMENT WING (WING FLAT, MID-JOINT)**

A “second segment wing” is produced by cutting a whole wing (71301) between the first and second segments and the second and third segments. The first and third segments (drummette and tip) are removed. The second segment wing consists of the second segment containing the ulna and radius.

**71305-11 Bone-in, Skin-on, Color not specified**

## **CHICKEN – THIRD SEGMENT WING (WING TIP, FLIPPER)**

A “third segment wing” is produced by cutting a whole wing (71301) between the second and third segments. The first and second segments (drummette and flat) are removed. The third segment wing consists of the third segment containing the metacarpals and phalanges.

**71306-11 Bone-in, Skin-on, Color not specified**

## **CHICKEN – FIRST SEGMENT AND SECOND SEGMENT WINGS (DISJOINTED WINGS)**

“First segment and second segment wings” are produced by cutting a whole wing (71301) between the second and third segments. The third segment (tip) is removed. The joint between the first and second segments is then cut to separate the first and second segments (drummette and flat). First segment and second segment wings consists of approximate equal numbers of first and second segments packaged together.

**71307-11 Bone-in, Skin-on, Color not specified**

## **CHICKEN – WINGS WITH BACK ATTACHED, WHOLE (PIPISTRELLI-CUT)**

A “whole wings with back attached” is produced by separating the whole wings with back from the breast and back half of a whole bird without giblets (70102) and the mid backbone region. The whole wings with back attached consists of: 2 wings consisting of the humerus (drummette), ulna and radius (flat), and the metacarpals and phalanges (tip), and a portion of the upper backbone attached.

**71308-11 Bone-in, Skin-on, Color not specified**

## **CHICKEN – STRIPPED LOWER BACK**

A “stripped lower back” is produced by cutting along the pelvic bones to separate the legs from the back half (70401). The stripped lower back consists of the lower backbone, ilium, and pelvic bones with most, if not all, of the meat and skin removed. The tail, abdominal fat, and portions of the kidneys and testes may or may not be present.

**71401-11 Bone-in, Skin-on, Color not specified**

## **CHICKEN – LOWER BACK**

A “lower back” is produced by cutting a back half (70401) through the joint between the femur the pelvic bone to remove each of the legs. The lower back consists of the lower backbone, ilium, and pelvic bones with attached meat and skin. The tail, abdominal fat, and portions of the kidneys and testes may or may not be present.

**71402-11 Bone-in, Skin-on, Color not specified**

## **CHICKEN – UPPER BACK**

An “upper back” is produced by cutting a front half without wings (70302) along each side of the backbone to remove the breast and vertebral ribs. The upper back consists of the upper backbone (approximately 1.6 cm (5/8 inch) in width) with attached meat and skin.

**71403-11 Bone-in, Skin-on, Color not specified**

## **CHICKEN – WHOLE BACK**

A “whole back” is produced by cutting a whole bird without giblets (70102) perpendicular to the backbone at the junction of the neck. A cut is then made parallel along each side of the backbone through the vertebral ribs down to the base of the ilium, and along the outer edge of the pelvic bones. The whole back consists of the entire backbone, ilium, and pelvic bones with attached meat and skin. The tail, abdominal fat, and portions of the kidneys and testes may or may not be present.

**71404-11 Bone-in, Skin-on, Color not specified**

## **CHICKEN – TAIL**

The “tail” is produced by cutting the carcass through the backbones and the base of the ilium, and removing the carcass. The tail consists of the tailbones with attached meat and skin.

**71501-11 Bone-in, Skin-on, Color not specified**

## **CHICKEN – NECK**

The “neck” is produced by cutting the neck from the carcass at the shoulder joint and removing the head. The neck consists of the neck bones with attached meat and skin.

**71601-11 Bone-in, Skin-on, Color not specified**

**71601-12 Bone-in, Skinless**

## **CHICKEN – HEAD**

The “head” is produced by cutting the carcass at the upper neck and removing the carcass. The head consists of the skull bones and contents with attached beak, meat, and skin.

**71701-11 Bone-in, Skin-on**

## **CHICKEN – PAWS, PROCESSED**

A “processed paw” is produced by cutting a carcass leg through the metatarsus approximately at the metatarsal spur. The nail sheaths, thin yellow epidermal skin covering the paw, and carcass are removed. A processed paw consists of a portion of the metatarsus and four digits (phalanges) with attached meat and skin.

**71801-11 Bone-in, Skin-on**

## **CHICKEN – FEET, PROCESSED**

A “processed foot” is produced by cutting a carcass leg at the joints between the metatarsus and the tibia. The carcass is removed. The nail sheaths and thin yellow epidermal skin covering the foot are removed. A processed foot consists of the metatarsus and four digits (phalanges) with attached meat and skin.

**71802-11 Bone-in, Skin-on**

## **CHICKEN – PAWS, UNPROCESSED**

An “unprocessed paw” is produced by cutting a carcass leg at the joint between the metatarsus approximately at the metatarsal spur. The carcass is removed. A paw consists of a portion of the metatarsus and four digits (phalanges), with attached meat and skin. The nail sheaths and thin yellow epidermal skin covering the foot are not removed.

**71803-11 Bone-in, Skin-on**

## **CHICKEN – FEET, UNPROCESSED**

An “unprocessed foot” is produced by cutting a carcass leg at the joint between the metatarsus and the tibia. The carcass is removed. A foot consists of the metatarsus and four digits (phalanges) with attached meat and skin. The nail sheaths and thin yellow epidermal skin covering the foot are not removed.

**71804-11 Bone-in, Skin-on**

## **CHICKEN – GIZZARDS, PROCESSED**

The “gizzard” is removed from a carcass body cavity. Gizzards are mechanically cut and processed by removing the inner lining and contents. Fat and other adhering organs are removed. The gizzard consists of one or more irregularly shaped pieces of the enlarged muscular portion of the digestive canal.

**71901-00 Bone/skin (not applicable)**

## **CHICKEN – GIZZARDS, BUTTERFLY-CUT**

The “butterfly-cut gizzard” is removed from a carcass body cavity. Gizzards are mechanically cut open horizontally and processed by removing the inner lining and contents. Fat and other adhering organs are removed. The butterfly-cut gizzard consists of one slightly irregularly shaped, muscular portion of the digestive canal.

**71902-00 Bone/skin (not applicable)**

## **CHICKEN – GIZZARDS, V-STYLE CUT (V-STYLE GIZZARDS)**

The “v-style gizzard” is removed from a carcass body cavity. Gizzards are mechanically cut open vertically and processed by removing the inner lining and contents. Fat and other adhering organs are removed. The gizzard consists of one slightly irregularly shaped, muscular portion of the digestive canal.

**71903-00 Bone/skin (not applicable)**

## **CHICKEN – LIVERS**

The “liver” is removed from a carcass body cavity. The bile sac (gall bladder) is removed. The liver consists of a smooth brownish to reddish colored organ with one or more lobes that is irregular in shape and size.

**72001-00 Bone/skin (not applicable)**

## **CHICKEN – HEARTS, CAP-OFF**

The “cap-off heart” is removed from a carcass body cavity. Fat attached to the heart, the pericardial sac, and the aortal cap are removed. The cap-off heart consists of a muscular organ that circulates blood.

**72101-00 Bone/skin (not applicable)**

## **CHICKEN – HEARTS, CAP-ON**

The “cap-on heart” is removed from a carcass body cavity. Fat attached to the heart, the pericardial sac, and the aortal cap are not removed. The cap-on heart consists of a single muscular piece that circulates blood with associated heart tissue.

**72102-00 Bone/skin (not applicable)**

## **CHICKEN – TESTES (FRIES, TESTICLES)**

“Testes” are removed from a carcass body cavity. Testes consist of membrane-covered, bean-shaped bodies that are the male chicken reproductive organs.

**72201-00 Bone/skin (not applicable)**

## **CHICKEN – BREAST SKIN**

“Breast skin” consists of the exterior layer of tissue that encloses the breast area from a carcass, whole breast, or split breast. The neck skin is not present.

**72301-21 Boneless, Skin, Color not specified**

## **CHICKEN – THIGH/LEG SKIN**

“Thigh/leg skin” consists of the exterior layer of tissue that encloses the thigh or leg area of a carcass, back half, or leg.

**72302-21 Boneless, Skin, Color not specified**

## **CHICKEN – BODY SKIN**

“Body skin” consists of the exterior layer of tissue that encloses the entire carcass, excluding the neck area.

**72303-21 Boneless, Skin, Color not specified**

## **CHICKEN – ABDOMINAL FAT (LEAF FAT)**

Chicken “abdominal fat” consists of a mass of adipose tissue located in the abdominal cavity adjacent to the pelvic bones.

**72401-22 Boneless, Skinless**

## **CHICKEN – TWO-PRODUCT COMBINATIONS (2-PRODUCT COMBO)**

A “two-product combination” consists of two chicken parts (e.g., drumsticks and thighs) or products (e.g., gizzards and livers) that are packaged together or packed in the same package or shipping container.

Specify “1” in the additional product/packaging option sections. Indicate the product trade description code for each product to be delivered. Also, include the product ratio (e.g., 2 drumsticks per 1 thigh, or equal proportions (1:1) of gizzards and livers). See example trade description in Section 71.130.

## **CHICKEN – THREE-PRODUCT COMBINATIONS (3-PRODUCT COMBO)**

A “three-product combination” consists of three chicken parts (e.g., drumsticks, thighs, and wings) or products (e.g., necks, gizzards, and livers) that are packaged together or packed in the same package or shipping container.

Specify “1” in the additional product/packaging option sections. Indicate the product trade description code for each product to be delivered. Also, include the product ratio (e.g., 2 drumsticks and 2 wings per 1 thigh, or equal proportions (1:1:1) of necks, gizzards, and livers). See example trade description in Section 71.130.

## **CHICKEN – FOUR-PRODUCT COMBINATIONS (4-PRODUCT COMBO)**

A “four-product combination” consists of four chicken parts (e.g., breast, drumsticks, thighs, and wings) or products (e.g., necks, gizzards, livers, and hearts) that are packaged together or packed in the same package or shipping container.

Specify “1” in the additional product/packaging